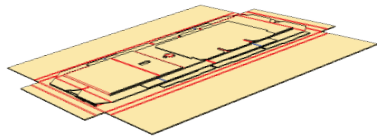


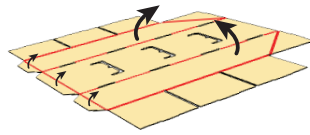


BEARDED BUTCHER BLEND SEASONINGS

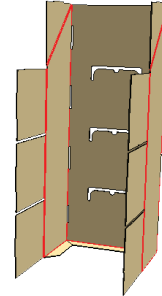
DISPLAY SET-UP INSTRUCTIONS



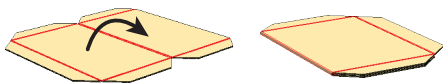
1. Open carton.



2. Fold in flaps on sides and bottom of body.



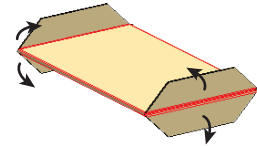
3. Stand up body.



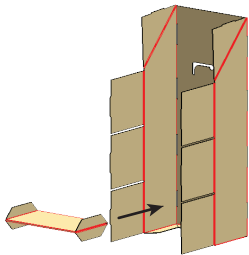
4. Fold over shelf. Repeat for each shelf (x3).



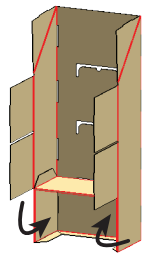
5. Fold down end flap. Repeat for each shelf (x3).



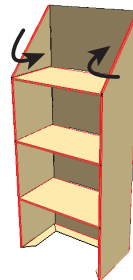
6. Fold side flaps up/down on each side Repeat for each shelf (x3).



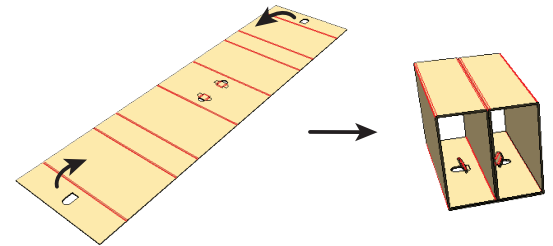
7. Insert shelf, insert long edge flap into slot on back wall of body.



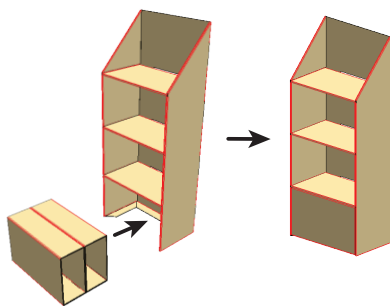
8. Fold in side flaps under shelf on each side.



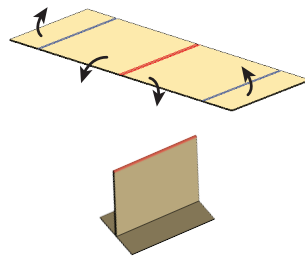
9. Repeat steps #7 and #8 for each shelf. Fold top, angled flap in and insert tab in slot of back wall.



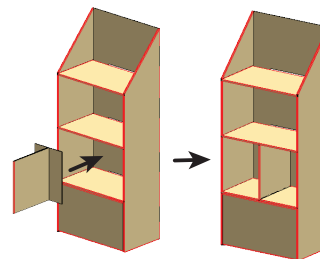
10. Fold/Roll up bottom support from each end and insert tab(s) to secure.



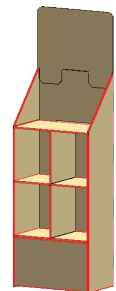
11. Insert bottom support under bottom shelf.



12. Fold shelf support down at middle crease. Fold each outside flap up to form a "T"



13. Insert shelf support under shelf. Repeat for other shelf.



14. Attach Header at top of back wall of body. Display is complete.