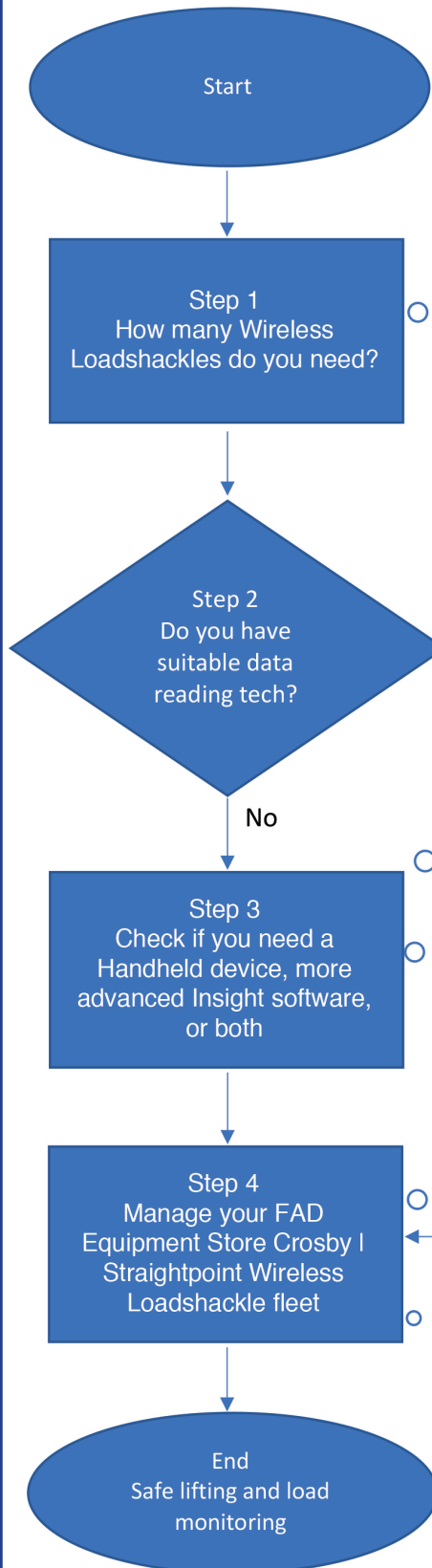


## Here's our step-by-step guide to buying a Wireless Loadshackle

Having used the FAD Equipment Store to source your Crosby | Straightpoint Wireless Loadshackle/s, you need to make sure you also buy the right data reading technology. A Loadshackle alone is of no use if you can't read the data it records.



- Load monitoring a fixed point when headroom or rigging length is restricted.



A Loadshackle is rigged at a pick point where data is required about the load. You might need one, two, three or many more. The number of Loadshackles you use will influence the type of data reading technology required.

A Handheld device might be adequate if measurements need to be taken from up to 4 Loadshackles. For more comprehensive load monitoring (datalogging, load alarms, center of gravity, etc.) or if 5+ Loadshackles are used, Insight is required.

Insight allows users to monitor up to 126 load cells from up to 2,300 ft. away, before and during a lift. You might even require both a Handheld and Insight software if there are multiple and varied requirements to gather data.

You might need additional Loadshackles, Handhelds or Insight software in future. All Crosby | Straightpoint equipment emits the same signal; you can connect new Loadshackles to your data reading technologies.

Your Crosby | Straightpoint equipment will tell you when it is approaching renewal of its 12-month calibration certificate.

