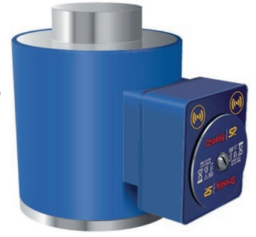
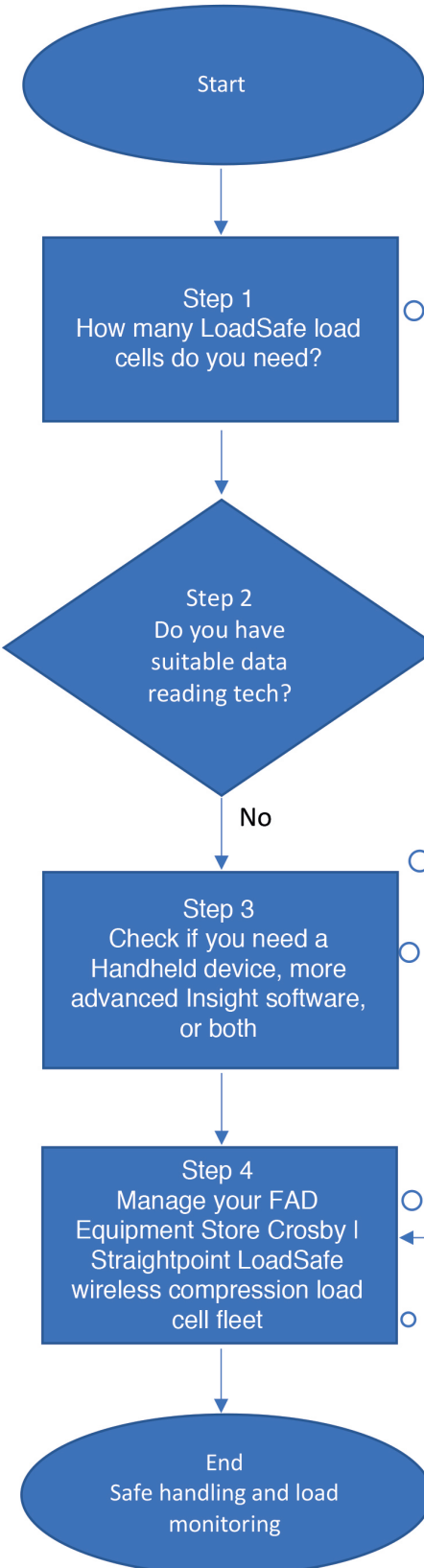


## Here's our step-by-step guide to buying a LoadSafe wireless compression load cell

Having used the FAD Equipment Store to source your Crosby | Straightpoint LoadSafe wireless compression load cell, you need to make sure you also buy the right data reading technology. A LoadSafe alone is of no use if you can't read the measurement data it transmits.



- Used to ascertain load or center of gravity.



A LoadSafe is positioned at a point where load data is required about the object being weighed. You might need one, two, three or more. The number of LoadSafes you use will influence the type of data reading technology required.



A Handheld device might be adequate if measurements need to be taken from up to 4 LoadSafe wireless load cells and only weight is required. If center of gravity or more comprehensive load monitoring (datalogging, load alarms, etc.) or if 5+ LoadSafes are used, Insight is

Insight allows users to monitor up to 126 load cells from up to 2,300 ft. away, before and during a weighing. You might even require both a Handheld and Insight software if there are multiple and varied requirements to gather data.

You might need additional LoadSafe load cells, Handhelds or Insight software in future. All Crosby | Straightpoint equipment emits the same signal; you can connect new LoadSafes to your data reading technologies.

Your Crosby | Straightpoint equipment will tell you when it is approaching renewal of its 12-month calibration certificate.

