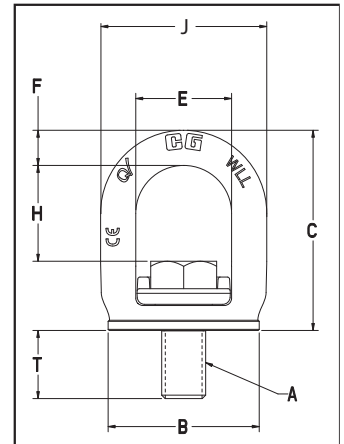


Lifting Points



SL-150
Slide-Loc
Lifting Point

- Available in capacities from .5 to 3.2 metric tons.
- Bail is Forged Alloy Steel – Quenched and Tempered.
- Bail swivels 360° degrees.
- Rated at 100% for 90 degree angle.
- Fatigue rated to 20,000 cycles at 1-1/2 times the Working Load Limit.
- Meets the Machinery Directive 2006/42/EC guidelines and is marked with CE accordingly.
- Bolt specification for metric bolt is Grade 10.9 alloy cap screw to SO 898-1.
- Unique locking mechanism makes the lifting point well suited for quick attachment to load surface. No need for tools.
- Features **QUIC-CHECK®** markings on bail to assist in knowing when device is ready for lifting.



Load Rated™

Fatigue Rated™

QUIC-CHECK®



SEE APPLICATION AND WARNING INFORMATION
On Page 215 -216
Para Español: www.thecrosbygroup.com

Rigging Accessories

SL-150 UNC SLIDE-LOC™ LIFT POINT

Weight Each (lb)	SL-150 Stock No.	Working Load Limit (t)*	Dimensions (in)							Effective Thread Projection Length
			Bolt Size A	B	C	E	F	H	J	T
0.30	1068407	0.50	3/8 - 16 x 1	1.40	2.09	1.10	0.33	1.11	1.77	0.60
0.53	1068416	0.75	1/2 - 13 x 1 - 1/4	1.67	2.47	1.30	0.41	1.30	2.13	0.79
1.10	1068425	1.50	5/8 - 11 x 1 - 5/8	2.17	2.98	1.46	0.52	1.46	2.50	1.01
2.05	1068434	2.30	3/4 - 10 x 2	2.71	3.59	1.72	0.63	1.72	2.98	1.26
2.16	1068443	2.30	7/8 - 9 x 2	2.71	3.61	1.72	0.63	1.72	2.98	1.23
3.73	1068452	3.20	1 - 8 x 2 - 1/2	3.25	4.33	2.08	0.76	1.93	3.59	1.59

*Ultimate load is 4 times the Working Load Limit.

SL-150 METRIC SLIDE-LOC™ LIFT POINT

Weight Each (kg)	SL-150M Stock No.	Working Load Limit (t)*	Dimensions (mm)							Effective Thread Projection Length
			Bolt Size A	B	C	E	F	H	J	T
.14	1068515	0.50	M10X1.5 X 25	35.5	53.0	28.0	8.5	27.8	45.0	14.6
.23	1068524	0.75	M12x1.75x30	42.5	62.6	33.0	10.5	32.9	54.0	18.3
.50	1068533	1.50	M16x2x40	55.0	75.7	37.0	13.2	37.0	63.4	24.5
.94	1068542	2.30	M20x2.5x50	68.8	91.1	43.9	16.0	43.6	75.6	31.0
1.60	1068551	3.20	M24x3x60	82.5	110.0	52.8	19.2	52.8	91.2	37.0

*Ultimate load is 4 times the Working Load Limit.

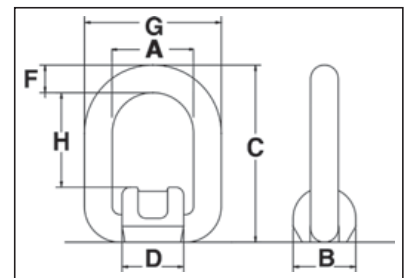


S-265
Weld-On Pivot Link

- Forged Steel — Quenched and Tempered.
- Excellent welding qualities.
- Widely used on farm machinery, trucks, steel hulled marine vessels and material handling equipment.
- Reference American Welding Society specifications for proper welding procedures.



SEE APPLICATION AND WARNING INFORMATION
On Pages 208 -209
Para Español: www.thecrosbygroup.com



S-265 Weld-On Pivot Link

Working Load Limit (t)		S-265 Stock No	Weight Each (lb)	Dimensions (in)							Minimum Fillet Weld Size (in)
Design Factor 5:1	Design Factor 4:1			A	B	C	D	F	G	H	
1	1.2	1290740	.88	1.57	1.42	3.27	1.38	.51	2.60	1.65	3/32
2.5	3.2	1290768	1.32	1.77	1.73	3.90	1.65	.71	3.19	1.89	3/32
4.2	5.3	1290786	2.65	2.17	2.38	4.84	1.93	.87	3.90	2.24	1/4
6.4	8	1290802	5.29	2.76	2.52	5.67	2.52	1.02	4.80	2.64	1/4
12	15	1290820	13.01	3.82	3.54	7.60	3.39	1.34	6.50	3.70	5/16