

COMPOZITE DAVIT CRANE

Individually tested and certified at 125%



Boom Weight
43lbs.

OZ1200DAV
[PATENTED]

Mast Weight
30lbs.

1200 lbs. Capacity

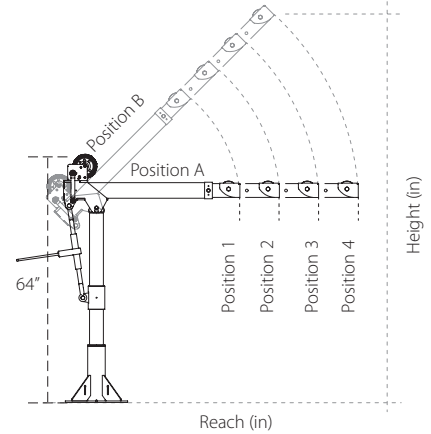
Features

- **Boom/Extension and Mast made of Advanced Composite Material**
- Light weight, about 40% lighter than steel
- Corrosion resistant
- Metal components mil-spec zinc plated
- External handle helps rotate crane under load
- 4 position boom
- Ratchet screw jack adjusts boom under load giving you infinite range of lift
- 360 degree rotation of crane on sleeve bearing
- No tools required for installation
- DIN-Rated hand winch equipped standard with a load holding weatherproof Weston brake (Cable assembly sold separately)
- Hand winch accepts two different cable termination points: swaged ball fitting or bare end cable
- Quick connect winch handle with power drill adapter included
- Smart Latch technology at boom/mast connection
- Headache Ball (OZHB10) available and sold separately
- Carrying case (OZRB1) available and sold separately

OZPED1 base shown
Bases and cable assemblies sold separately

Crane weighs only 83 lbs.

One person set up.
No tools required for installation.
Portable ultra lightweight.



Pedestal Base Boom Position A:

Boom Position 1:	Height 50	Reach 36
Boom Position 2:	Height 50	Reach 46
Boom Position 3:	Height 50	Reach 56
Boom Position 4:	Height 50	Reach 66

Pedestal Base Boom Position B:

Boom Position 1:	Height 74	Reach 22
Boom Position 2:	Height 81	Reach 29
Boom Position 3:	Height 88	Reach 36
Boom Position 4:	Height 95	Reach 43

*Dimensions are for reference only and subject to change without notice.

Steel Wire Rope (For manual winch)

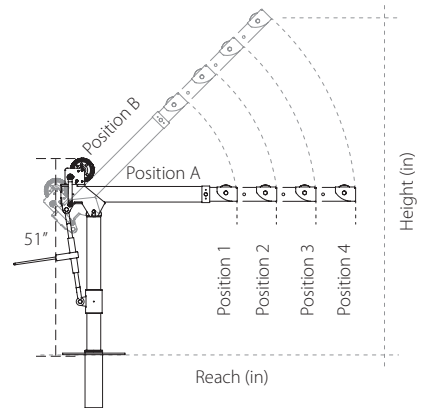
OZGAL.19-80B	3/16" x 80'	Galvanized cable assembly
OZSS.19-80B	3/16" x 80'	Stainless steel cable assembly
OZGAL.25-55B	1/4" x 55'	Galvanized cable assembly
OZSS.25-55B	1/4" x 55'	Stainless steel cable assembly

All cable assemblies come with swaged ball and swivel hook with latch. **Custom cable length available.**
3/16" - 80 ft max. length • 1/4" - 55ft max. length

Steel Wire Rope (For manual and power winch)

OZGAL.19-90	3/16" x 90'	Galvanized cable assembly
OZSS.19-90	3/16" x 90'	Stainless Steel cable assembly
OZGAL.25-45	1/4" x 45'	Galvanized cable assembly
OZSS.25-45	1/4" x 45'	Stainless Steel cable assembly

All cable assemblies come with swaged ball and swivel hook with latch. **Custom cable length available.**
3/16" - 90 ft max. length • 1/4" - 45ft max. length



Socket Base Boom Position A:

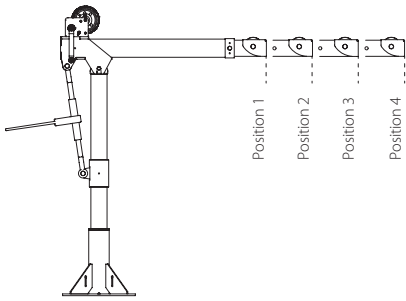
Boom Position 1:	Height 37	Reach 36
Boom Position 2:	Height 37	Reach 46
Boom Position 3:	Height 37	Reach 56
Boom Position 4:	Height 37	Reach 66

Socket Base Boom Position B:

Boom Position 1:	Height 61	Reach 22
Boom Position 2:	Height 68	Reach 29
Boom Position 3:	Height 75	Reach 36
Boom Position 4:	Height 82	Reach 43

*Dimensions are for reference only and subject to change without notice.





Load Ratings OZ1200DAV

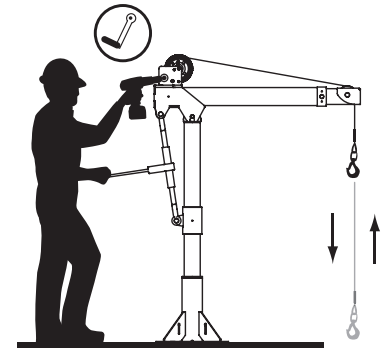
*Table based on 1/4 inch wire rope. 3/16" cable will be lower.

Load Ratings	1st. Layer	Mid. Drum	Full Drum
Position 1 (lbs)	1200	875	550
Position 2 (lbs)	900	875	550
Position 3 (lbs)	700	700	550
Position 4 (lbs)	400	400	400

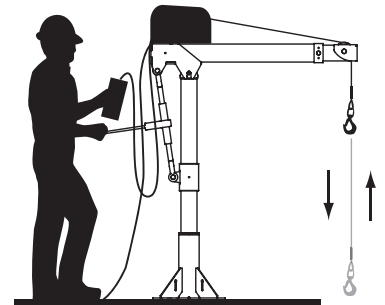
3/16" Cable (ft)	Boom Position 1 (lbs)	Boom Position 2 (lbs)	Boom Position 3 (lbs)	Boom Position 4 (lbs)
6	800	800	700	400
14	800	800	700	400
22	800	800	700	400
31	800	800	700	400
41	775	775	700	400
52	725	725	700	400
64	650	650	650	400
77	625	625	625	400
90	550	550	550	400

1/4" Cable (ft)	Boom Position 1 (lbs)	Boom Position 2 (lbs)	Boom Position 3 (lbs)	Boom Position 4 (lbs)
4	1200	900	700	400
9	1025	900	700	400
14	875	875	700	400
20	775	775	700	400
27	700	700	700	400
35	625	625	625	400
43	575	575	575	400
50	550	550	550	400

Options for faster lowering and raising



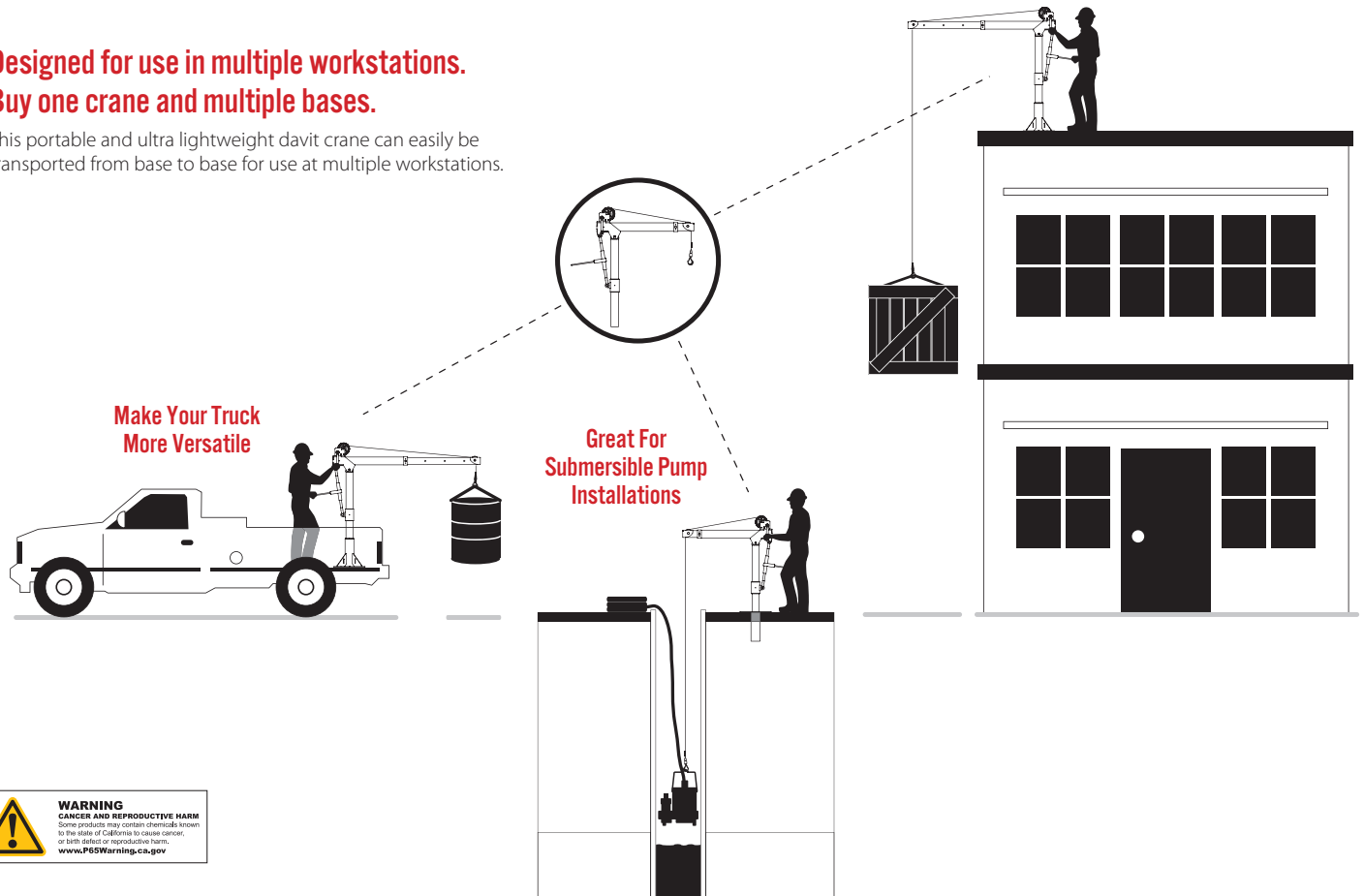
Detach winch handle for drill option.



AC and DC power winches available. See page 21.

Designed for use in multiple workstations. Buy one crane and multiple bases.

This portable and ultra lightweight davit crane can easily be transported from base to base for use at multiple workstations.



Make Your Truck More Versatile

Great For Submersible Pump Installations



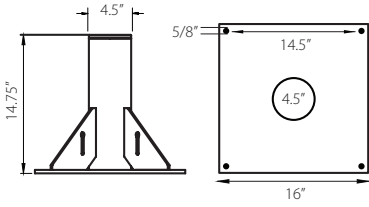
DAVIT CRANE MOUNTING BASES (Sold Separately)

*Includes mounting template

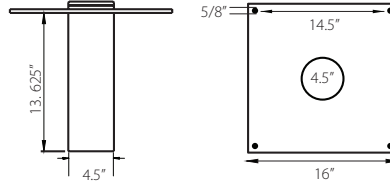


COMPOSITE DAVIT CRANE - OZ1200DAV

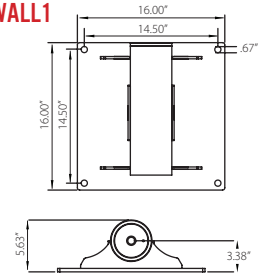
OZPED1



OZSOC1



OZWALL1



*Bases inside diameter 3.6"





APPLICATION DATA SHEET | DAVIT CRANES

Date: _____

P.O. Box 845 Winona, MN 55987 • Tf: (800) 749-1064 • Ph: (507) 474-6250 • Fax: (507) 452-5217 • sales@ozliftingproducts.com

Company Name: _____ Contact Name: _____

Email Address: _____

Phone: _____ Fax: _____

Address: _____ City: _____ State: _____ Zip Code: _____

1. JOB DESCRIPTION:

2. WEIGHT OF LOAD:

3. HOW FAR IS THE LOAD MOVING?

4. REACH REQUIREMENTS:

5. WHAT CAPACITY DO YOU NEED AND WHAT REACH?

6. HEIGHT REQUIREMENTS:

7. WINCH REQUIREMENTS:

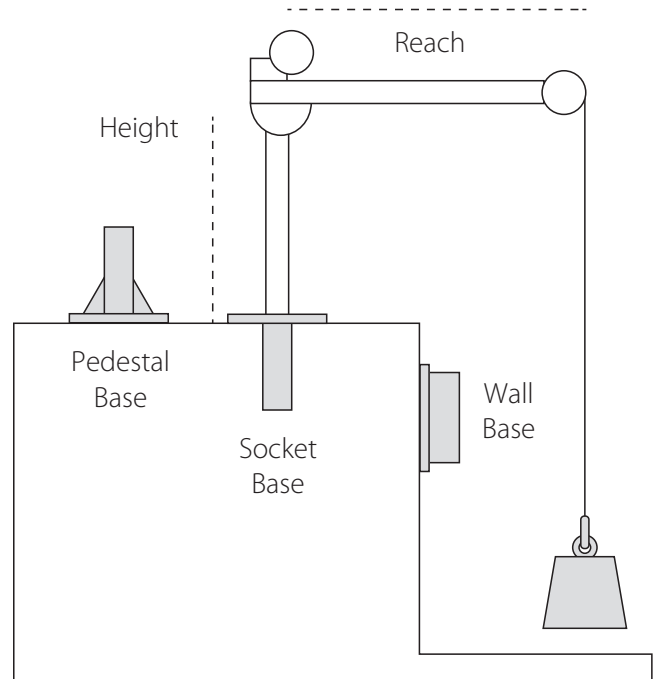
Hand 115 Volt AC 12 Volt DC

8. BASE REQUIREMENTS:

Pedestal Socket Wall Mount
 Base Extension

9. WHERE IS THE DAVIT CRANE BEING USED?

10. HOW DID YOU HEAR OF US?



Purchaser is responsible for proper base installation. Consulting with a civil engineer or qualified professional is highly recommended.

Each crane is tested at 125%.
Test cert included. Cable and base sold separately.

OZ Lifting products are not for lifting up people or objects over people.

Load ratings may vary depending on position of boom, wire rope length and winch used.

