

# ALUMI-LITE® DAVIT CRANE

Individually tested and certified at 125% W.L.L

OZA500DAV, OZA1000DAV



Ultra lightweight & portable

500 lbs. and 1,000 lbs. Capacity

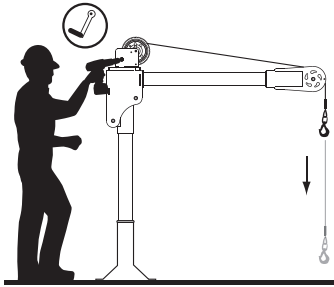
## Features

- Lightweight aerospace grade aluminum construction
- 360 degree rotation
- 3 different boom height adjustments
- Durable powder coat finish
- Truly Portable Design
- One-Person Assembly (No Tools Needed)
- Manual Din rated CE winch with brake (Includes power drill adaptor)
- AC & DC winch options

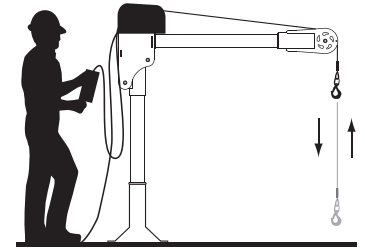
OZA5000DAV shown with optional OZPED3 Pedestal base and OZGAL.19-50B galvanized wire rope assembly and OZHB10 headache ball

Bases, cable assemblies and headache ball sold separately

## Options for faster lowering and raising



Manual winch w/drill drive adaptor



AC and DC power winches available

## Weight

Weight (excluding winch)	Boom	Mast	Net
OZA500DAV (lbs)	12	12	24
OZA1000DAV (lbs)	25	22	47

## WIRE/SYNTHETIC ROPE ASSEMBLIES

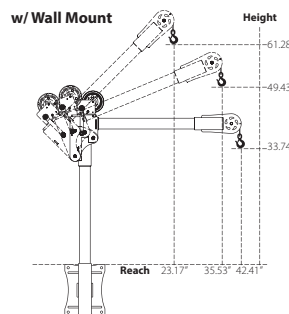
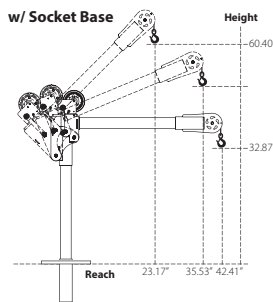
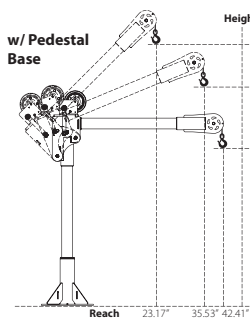
(sold separately) Custom length available.

Manual winch: 3/16" - 80 ft max. lift length

AC/DC Electric Winch: 3/16" - 90 ft max. lift length

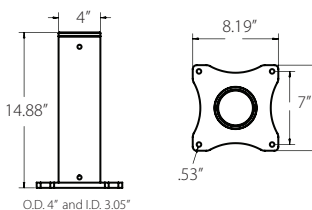
See wire & synthetic rope assembly options on page 3

## OZA500DAV DIMENSIONS

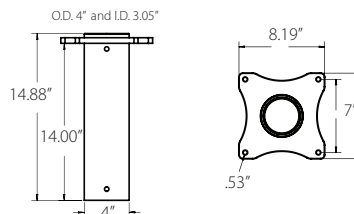


## OZA500DAV BASES (sold separately) Comes with mounting template.

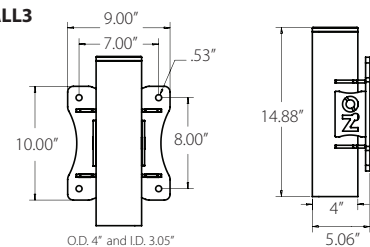
### OZPED3



### OZSOC3



### OZWALL3

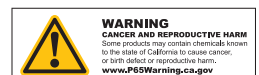


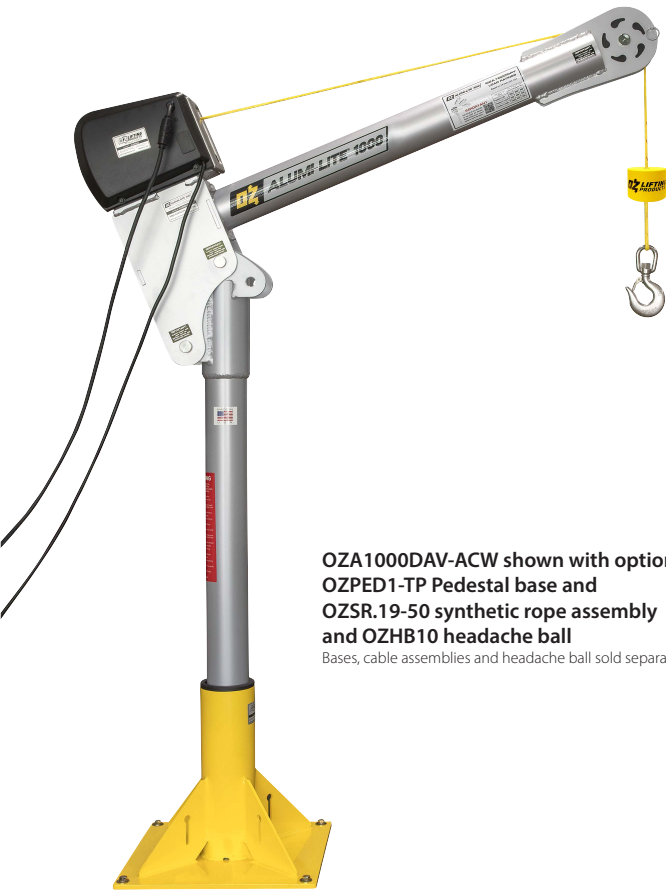
Dimensions and illustrations are for reference only and subject to change without notice.

## OZA500DAV Load Ratings (lbs.)

Based on 3/16" wire rope

	1st. Layer	Mid. Drum	Full Drum
Position 1 (0°)	275	275	275
Position 2 (+22.5°)	330	330	330
Position 3 (+45°)	500	500	500





**OZA1000DAV-ACW shown with optional OZPED1-TP Pedestal base and OZSR.19-50 synthetic rope assembly and OZHB10 headache ball**  
Bases, cable assemblies and headache ball sold separately

**WIRE/SYNTHETIC ROPE ASSEMBLIES**

(sold separately) Custom length available.

Manual winch: 1/4" - 55ft max. lift length

AC/DC Electric Winch: 1/4" - 45ft max. lift length

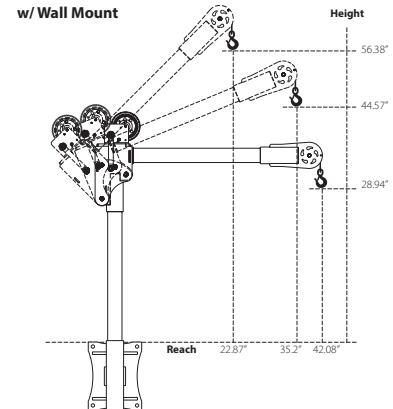
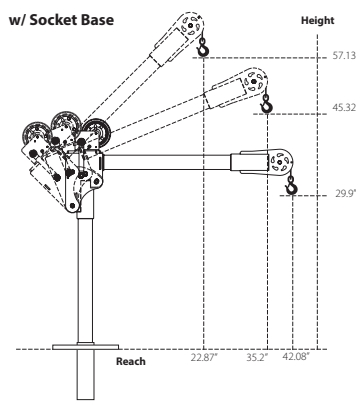
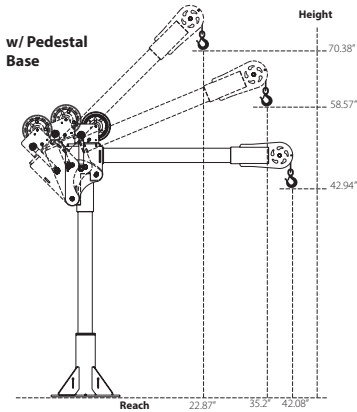
See wire & synthetic rope assembly options on page 3

**OZA1000DAV Load Ratings (lbs.)**

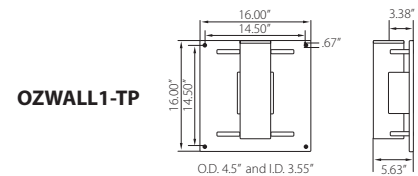
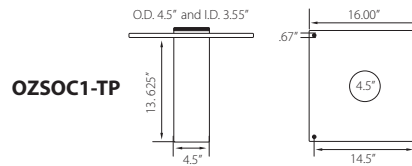
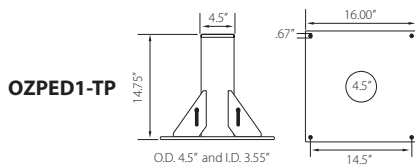
Based on 1/4" wire or 3/16" Ultrtex synthetic rope

	1st. Layer	Mid. Drum	Full Drum
Position 1 (0°)	550	550	550
Position 2 (+22.5°)	650	650	550
Position 3 (+45°)	1000	875	550

**OZA1000DAV DIMENSIONS**



**OZA1000DAV BASES** (sold separately) Comes with mounting template.



Dimensions and illustrations are for reference only and subject to change without notice.



# WIRE/SYNTHETIC ROPE ASSEMBLIES

## Steel Wire Rope (For manual winch)

OZGAL.19-80B	3/16" x 80'	Galvanized cable assembly
OZSS.19-80B	3/16" x 80'	Stainless steel cable assembly
OZGAL.25-55B	1/4" x 55'	Galvanized cable assembly
OZSS.25-55B	1/4" x 55'	Stainless steel cable assembly

Above cable assemblies come with swaged ball and swivel hook with latch.

**Custom cable length available.**

3/16" - 80 ft max. length • 1/4" - 55ft max. length

## Steel Wire Rope (For manual and power winch)

OZGAL.19-90	3/16" x 90'	Galvanized cable assembly
OZSS.19-90	3/16" x 90'	Stainless Steel cable assembly
OZGAL.25-45	1/4" x 45'	Galvanized cable assembly
OZSS.25-45	1/4" x 45'	Stainless Steel cable assembly

All cable assemblies come with a swivel hook with latch.

**Custom cable length available.**

3/16" - 90 ft max. length • 1/4" - 45ft max. length

## Synthetic Rope

OZSR.19-15	3/16" x 15'	Ultrax Synthetic Rope
OZSR.19-50	3/16" x 50'	Ultrax Synthetic Rope
OZSR.19-90	3/16" x 90'	Ultrax Synthetic Rope
OZSR.25-50	1/4" x 50'	Ultrax Synthetic Rope
OZSR.25-75	1/4" x 75'	Ultrax Synthetic Rope
OZSR.31-55	5/16" x 55'	Ultrax Synthetic Rope
OZSR.38-45	3/8" x 45'	Ultrax Synthetic Rope

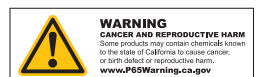
All synthetic rope assemblies come with looped ends and pre-installed swivel hook with latch



## HEADACHE BALL

OZHB10

Keeps your wire rope tensioned even when lowering the hook with no load. Compatible with 3/16" and 1/4" wire rope assemblies. Headache balls sold separately from all davit cranes and wire rope assemblies.





## DAVIT CRANE COVER

OZDAV-C1

Protect your davit crane from the elements with this waterproof cover. Compatible with all OZ Lifting Products davit cranes 1200 lbs. capacity or less excluding the XR series.



**COMING SOON**



## WHEEL BASE

For all OZ Lifting davit cranes up to 1200 lbs capacity

- Optional floor anchoring system allows the davit to rotate while under load (when base is not anchored the davit must remain in a forward position when lifting)
- Oversized casters make rolling the base and moving loads easy
- Compatible with all OZ lifting davit cranes up to 1200 lbs capacity
- Durable steel construction with powder coat finish
- Davit crane sold separately
- Patent pending

