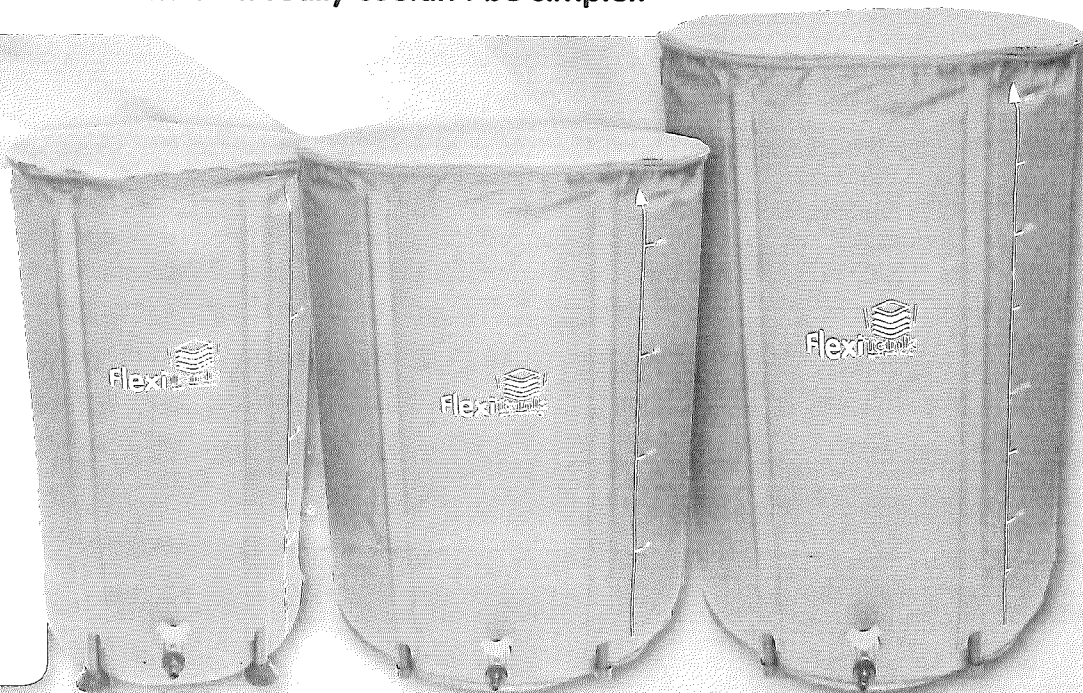


The all new FlexiTank revolutionises water storage, it is everything you need in one compact box. It requires no tools for assembly, reduces storage and shipping costs and takes minutes to assemble. **It really couldn't be simpler.**

### Contents

- ✓ 1x 16mm click fit male connector
- ✓ 5x Support Poles (100ltr)
- 6x Support Poles (225 & 400 ltr)
- ✓ 1x Water Tank
- ✓ 1x 16mm Tap



**Capacity:** 100 ltr

**Box size and weight:**  
73.5 x 18 x 12.5cm/1.8kg

**When full of water:**  
43cm Diameter x 75cm High

**Capacity:** 225 ltr

**Box size and weight:**  
78.5 x 18 x 12.5cm/2.7kg

**When full of water:**  
63.5cm Diameter x 81cm High

**Capacity:** 400 ltr

**Box size and weight:**  
112 x 18.5 x 12.5cm/4.8kg

**When full of water:**  
68cm Diameter x 111cm High

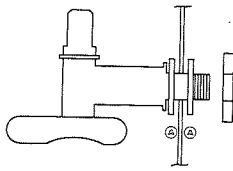
## Assembly Instructions

- 1 Unpack the contents of the box and ensure all parts are correct.
- 2 Unfold and open your blue FlexiTank.
- 3 Attach the tap to the bottom of the FlexiTank by pushing it through the hole, keeping the tap at a 90 degree angle anticlockwise (until the tank is full - see 6), ensuring there is a rubber on the outside and the inside of the tank and tighten the nut as tight as possible.
- 4 Insert all support poles into the side sleeves of the FlexiTank.
- 5 The Flexitank is now ready to be turned upright and moved into place. Ensure that the Flexitank is placed on a flat and smooth surface to prevent damage to the plastic.
- 6 Fill the Flexitank. Once full with water, twist the tap 90 degrees clockwise to the correct position.
- 7 The FlexiTank comes with a 1 year guarantee, covering manufacturing defects. Any misuse of the product is not covered by the guarantee.



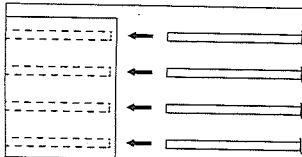
## Important – Please read

1



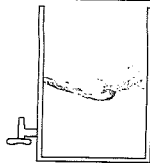
Push the tap through the FlexiTank, fitting the rubber washers as shown (A). Fit the tap upside down tightening as tight as you can by hand.

2



Insert the poles.

3



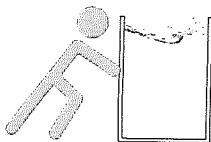
Position on a smooth, flat surface.  
Half fill with water.

4



Twist the tap clockwise to the upright position.

5



Never drag or move the FlexiTank when full of water. The FlexiTank should be completely drained before it is moved.

## Important – Please read

[www.autopot.co.uk](http://www.autopot.co.uk)