

The Chemist's Corner Key Points of Difference with FloraMax

by Andrew M Taylor

FloraMax
Your harvest is our priority

VegaFlora A+B & Veg-1 (liquid or powder) *Base Nutrients for Hydro/Coco/Soil/DWC*

USE SEED TO HARVEST



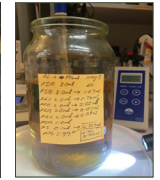
1. Single formula for veg and bloom that performs flawlessly from seed through to harvest.
2. No "cal-mag" required, even with coco, RO or soft water.
3. Industry-leading pH-buffering*. For example, in coco and soil, pH adjustment is rarely required.
*FloraMax's buffering neutralizes 80ppm of alkalinity below pH 6.5. This is over 20% better than brands that are regarded as "highly-pH-buffered".
4. Manages hard or high pH waters - runs cleaner with fewer blockages and provides exceptionally long reservoir stability (*several months if conditions are correct*).
5. Powdered versions are fully soluble, homogenous, and their performance matches the liquid versions.



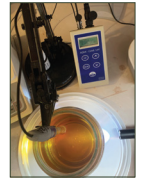
FloraMax: Rapid veg growth without a cal-mag or nitrogen supplements.
@hydropacific, California



Thick stems with **FloraMax**. No cal-mag.
@55hydro, California



Aug 19 FloraMax test batch with all additives (EC 2.3mS). Original pH 5.99 and now 6.47 after 19-months. There's minimal deposit on bottom of jar and nil slimes.
@floramaxlab



Root-XS *Root Accelerant*

USE SEED TO HARVEST @ 2ml/L (7.5 ml/Gal) | NPK 0.3-0-1



1. 90% organic - use of refined organic extracts results in faster root development than other industry benchmarks.
2. Explosive root and foliage growth throughout veg helps reduce overall cropping time and minimizes transplant stress. Plants can often be "flipped" sooner.
3. Unlike competing products, Root-XS will not cause foaming, foul odors or biofilms in the reservoir. It is also pH-neutral and fully soluble.

CAUTION: Organic additive - NEVER use in conjunction with chlorines or peroxides.



FloraMax Root-XS: Root growth over 8-days
@h2hydroponics, Michigan

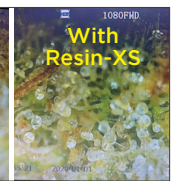
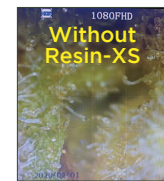
Resin-XS *Resin & Oil Enhancer*

USE FROM BLOOM WEEK 3 @ 2ml/L (7.5 ml/Gal) | NPK 0-1-4



1. Compared to other oil-enhancers, Resin-XS' unique extracted organics plus "PK" blend helps promote 30% more trichomes and 7-10% higher total oil content.
2. Runs extremely clean with no odors, foaming or biofilms/sludges - these problems are common with competing brands. PGR free.
3. PK-additive component is ideal for use with any nutrient regime as it is "pH-neutral" and carefully balanced for universal application.

CAUTION: Organic additive - NEVER use in conjunction with chlorines or peroxides.



Resin-XS enhances trichome size

Flowering Enhancer *PK & Cal-Mag-Iron additive plus pH stabilizer* USE THROUGH BLOOM @ 2ml/L (7.5 ml/Gal) | NPK 0-5-3



This is the ultimate flowering additive for making growing easier - REGARDLESS of what brand of base nutrient is being used. It serves 3 functions:

- i. Flowering Enhancer contains a full dose of "cal-mag" and iron DTPA to prevent common deficiencies and create a stronger plant structure.
- ii. Provides "PK" that establishes the ideal baseline PK levels from the onset of flowering.
- iii. "Locks" nutrient pH below 6.5, which is achieved by supplying pH buffers that are 5-times stronger than normal. In recirculating systems, many growers find pH is stable for 7-10 days...or longer! In coco and soil, pH adjustment is rarely required.

This product will solve many of the deficiency issues associated with powdered base products.



FloraMax Flowering Enhancer replaces PK and Cal-Mag-Iron additives and stabilizes pH below 6.5. @essence.farm.1

OrganaBud *Purified kelp extracts*

USE SEED TO HARVEST @ 1-2ml/L (4-7.5 ml/Gal) | NPK 0-0-2



Contains purified "extracted" organics from Ascophyllum Nodosum kelp. This methodology optimizes the concentration and stability of organics to provide consistent and unparalleled performance:

- i. Produces a wider terpene profile, increased mass, more colorful pistils, tightens internodal distance and creates a "bushier" plant - ideal for indoor environments.
- ii. This is one of the cleanest organic additives on the market - no foaming, odors or blockages - the ideal organic additive for large hydroponic operations, including aeroponics and DWC.
- iii. 5+ year shelf life to ensure reliability.

CAUTION: Organic additive - NEVER use in conjunction with chlorines or peroxides.



FloraMax's organics run extremely clean (R).

Growth-XS *Veg accelerant*

USE IN WEEK-2 OF VEG @ 0.5-1ml/L (2-4 ml/Gal) | NPK 0-1-1



Helps reduce veg phase by 1-3 weeks so that plants can be "flipped" sooner. This provides valuable savings in running costs and permits more crop cycles per annum.

1. Helps prevent transplant and transition shock.
2. Helps revive stalled vegetative growth.
3. Will not cause internodal stretch when used as directed.
4. pH neutral formulation. Will not cause foaming, odors or blockages.

CAUTION: Organic additive - NEVER use in conjunction with chlorines or peroxides.



Impact of **Growth-XS** on new growth after 7-days use.
Suncoast Hydroponics & Garden Centre



Analytical Chemists and Horticultural Consultants Since 1966

www.floramax.com @floramaxnutrients

The Chemist's Corner

Key Points of Difference with FloraMax

by Andrew M Taylor

FloraMax
Your harvest is our priority

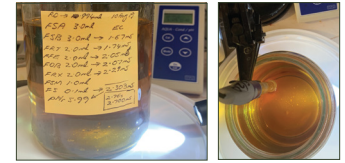
System Maintenance *System Hygiene*

USE SEED TO HARVEST @ 1ml/L (3.5 ml/Gal)



1. Prevents the growth of biofilms and slimes, even when carbohydrates or sugary additives are used. These can block dripper systems (and pipes) and are time-consuming to remove.
2. 100% organic formulation that enables growers to grow 'organically' without the usual drawbacks - NOTE: System Maintenance will NOT harm valuable organic additives such as resin/root enhancers, enzymes, myco's and beneficial bacteria. Chlorines and peroxides found in competing products will destroy these types of additives and render them useless.
3. Helps improve the color of flowers as a response to the promotion of a balanced root zone environment.

CAUTION: Organic additive - NEVER use in conjunction with chlorines or peroxides.



FloraMax batch sample with all additives and SYSTEM MAINTENANCE. After 19-months there is no white, stringy muck.

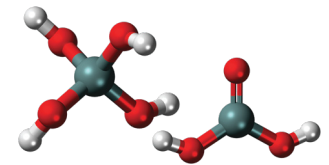
Silica *Monosilicic Acid*

USE THROUGH VEG & BLOOM @ 0.1-0.25ml/L (0.25-1 ml/Gal) | NPK 0-0-8



1. For maximum absorption*, Silica contains 16% silica as Mono-silicic Acid ("MSA") and Meta-silicic Acid ("MTSA").
2. Completely soluble in nutrient solutions and therefore 100% bio-available*.
3. Unlike many other brands, Silica is extremely stable - shelf-life exceeds 20 years.
4. Optimizes the known benefits of silica - improved plant rigidity, strength, and fruit weight, prevents leaf wilt in hot weather, helps prevent powdery mildew under optimized environmental conditions.

*Bioavailability of FloraMax Silica is confirmed via "silica-demand" analysis of NFT nutrient reservoirs using AWWA's "Molybdosilicate" Method: 80ppm silica dose 100% consumed within 7-10 days; approx 10L working nutrient per plant (1998).



FloraMax Silica: Silica as Monosilicic Acid (left) and Metasilicic Acid (right) is easily absorbed by plants

Clone Spray *Foliar Spray*

SPRAY FOR CLONES & SEEDLINGS, VEG & EARLY BLOOM @ 25ml/L (25 mL/Qrt) | NPK 0.3-0.04-0.02



1. Reduces overall cropping time by promoting root development, typically within 4-7 days, followed by explosive root and foliage growth through veg and early bloom. Helps prevent transplant stress and wilting of stems and leaves.
2. Contains 90% organic "stimulants" that are customized for stomatal absorption.
3. Absorption through the stomatal pathway is enhanced via application specific pH conditioners and a NON-TOXIC plant-specific wetting agent.

CAUTION: Organic additive - NEVER use in conjunction with chlorines or peroxides.



FloraMax Clone Spray produces explosive root growth. P.B., Detroit MI

Cloner *Clone Gel*

USE FOR CUTTINGS PRIOR TO PLANTING



1. 100% organic formulation that promotes faster root eruption in fresh cuttings.
2. Cloner's gel formula is much thinner than competing brands which facilitates improved absorption into the cut and faster rooting speeds.
3. Contains specific compounds that help "seal" the cut and prevent cross-contamination.
4. Unlike most competing brands, Cloner is extremely stable with a greater than 10-year shelf life.

CAUTION: Organic additive - NEVER use in conjunction with chlorines or peroxides.



FloraMax Cloner: 8 day-old Vampire Fangs @thehoneybadger007

Ca-Mg-Fe *Cal-Mag (Fe-Cu-Mn-Zn-Mo-B) Additive*

USE THROUGH VEG & BLOOM @ 0.5-2ml/L (2-7.5 ml/Gal) | NPK 2-0-0

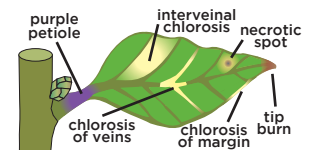


Unlike other cal-mags, Ca-Mg-Fe also contains the full spectrum* of trace elements:

- i. Many base nutrient formulations are deficient in trace elements.
- ii. Most nutrient deficiencies are in fact due to trace elements.
- iii. Many trace element species destabilize when subjected to hard or "high-pH" water however, Ca-Mg-Fe contains alkaline-resistant compounds that cope with pH levels up to 10.

NOTE: Ca-Mg-Fe is 100% compatible with all liquid or powdered base nutrients.

*Iron, copper, manganese, zinc, molybdenum and boron.



FloraMax Ca-Mg-Fe fights common nutrient deficiency symptoms

Pythoff PLUS *Prevents build-up in hydroponic systems*

USE SEED TO HARVEST @ 0.5ml/L (2 ml/Gal)



The formulation of Pythoff Plus is a result of our extensive experience as water treatment consultants since 1966:

1. Pythoff PLUS maximizes the effective working life of nutrient solutions.
2. Helps prevent root rot, blocked drippers and build-up in hydroponic systems.
3. Safe to use from seed to harvest.
4. Also used for maintaining stored water and for cleaning system hardware during post-harvest system clean-up.

CAUTION: Not compatible with hydrogen peroxide, beneficial bacteria, or "live" systems.



Pythoff PLUS helps prevent root browning



Analytical Chemists and Horticultural Consultants Since 1966

www.floramax.com @floramaxnutrients