



## WORX RACING YAMAHA 1.8 Free Flow Exhaust

PART # - WR04028

**MODELS: YAMAHA 1.8 MODELS**

---

### **INSTALLATION INSTRUCTIONS**

**IMPORTANT: READ ALL INSTRUCTIONS BEFORE PROCEEDING WITH INSTALLATION**

**Instruction pictures may vary slightly depending on model ski exhaust is being installed on.**

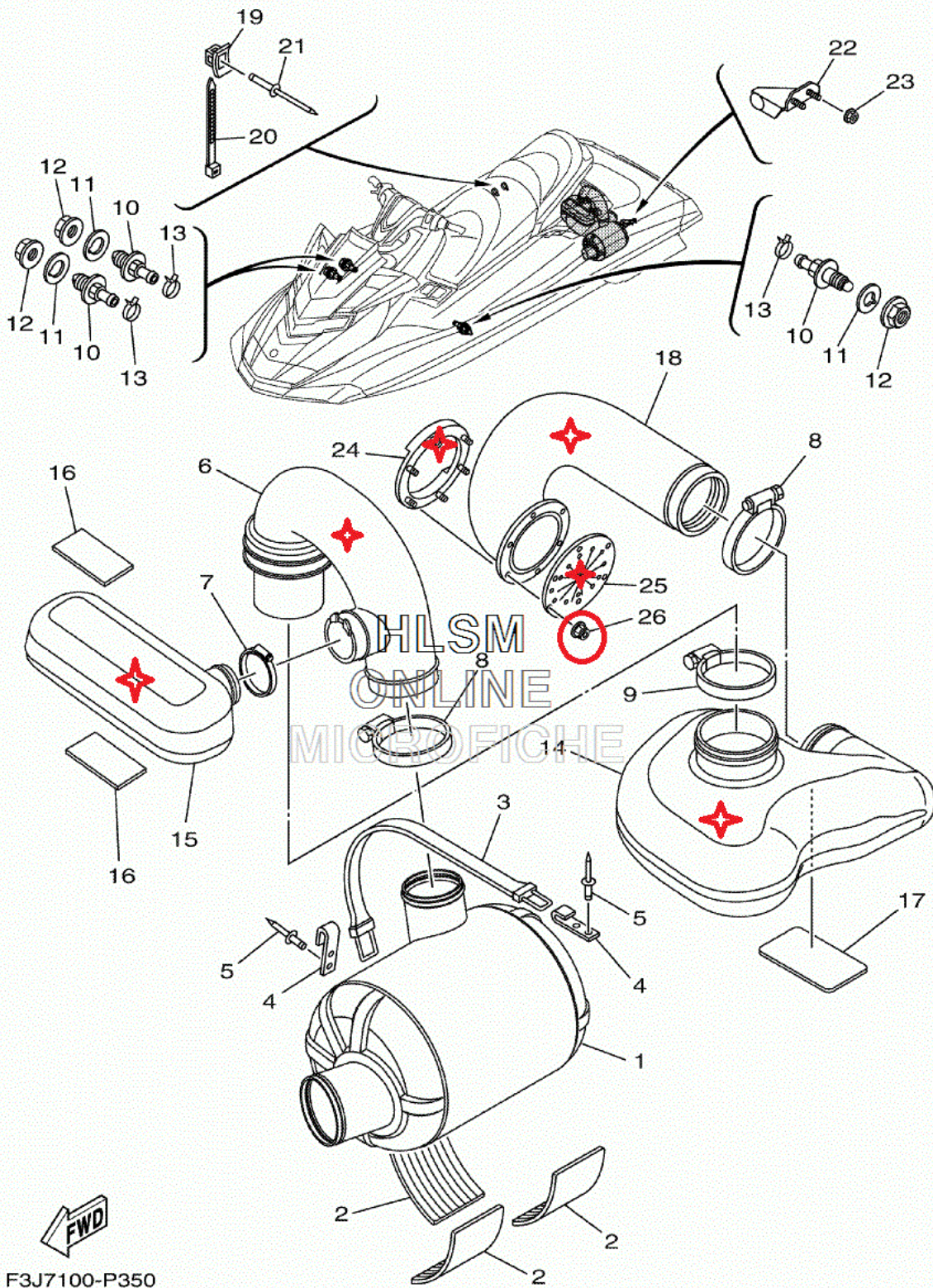
- 1- Make sure ski is secure and on a flat surface. Remove lanyard and disconnect battery.
- 2- Remove Seats and rear storage bucket from ski.
- 3- Remove rear seat bridge from ski to access exhaust.
- 4- Remove Small resonator from exhaust hose. Remove top exhaust hose elbow from water box and baffle. (Remove items #6, #14, #15, #18, #24, #25 and discard) **Pic 1 & Red crosses**
- 5- Remove rubber plates surrounding pump. (6 bolts). **Pic 2**
- 6- Remove reduction nozzle from pump unit to access exhaust outlet. Unclip reverse and trim ball joints. Remove siphon bilge hose from nozzle. **Pic 3** Remove steering cable from nozzle.
- 7- Remove 4 main pump bolts and remove reduction nozzle to access OEM outlet. **Pic 4**
- 8- Remove 6 brass nuts securing outlet. **#26 on parts diagram**
- 9- Remove large baffle and exhaust elbow and outlet seals remaining in ski.
- 10- Fit rubber seal onto billet outlet (Note this will be on the inside of the ski). **Pic 5 & 6** Fit billet outlet to stock outlet (hole) location to inside of hull and secure with bolts supplied. Wipe away excess silicone. **Pic 7 & 8**
- 11- Fit supplied Silicone exhaust hose to new billet outlet and water box and secure with hose clamps. **Pic 9 & 10**
- 12- Refit exit nozzle and reattach all cables and hoses. Refit rubber plates surrounding pump.
- 13- Check all clamps and bolts are secure. Run ski on flusher and check for any exhaust leaks.
- 14- Refit seat bridge and secure.
- 15- Water test ski and check after first few minutes.

Thank you for purchasing **Worx Racing components** products. We firmly believe that **Worx Racing Components** products are among the finest watercraft parts available. A great deal of time and effort has gone into the design and development of this product to ensure that it will perform to the highest standard and that installation is a relatively straight forward and simple procedure. If you have any questions or comments on the performance and/or installation of our products please contact us at the numbers listed on page one or through your local **Worx** dealer.

8B 354 Brisbane Rd Arundel QLD 4214 Phone: +61 7 5563 1031

[www.worx.com.au](http://www.worx.com.au) / [info@worx.com.au](mailto:info@worx.com.au)

---



F3J7100-P350



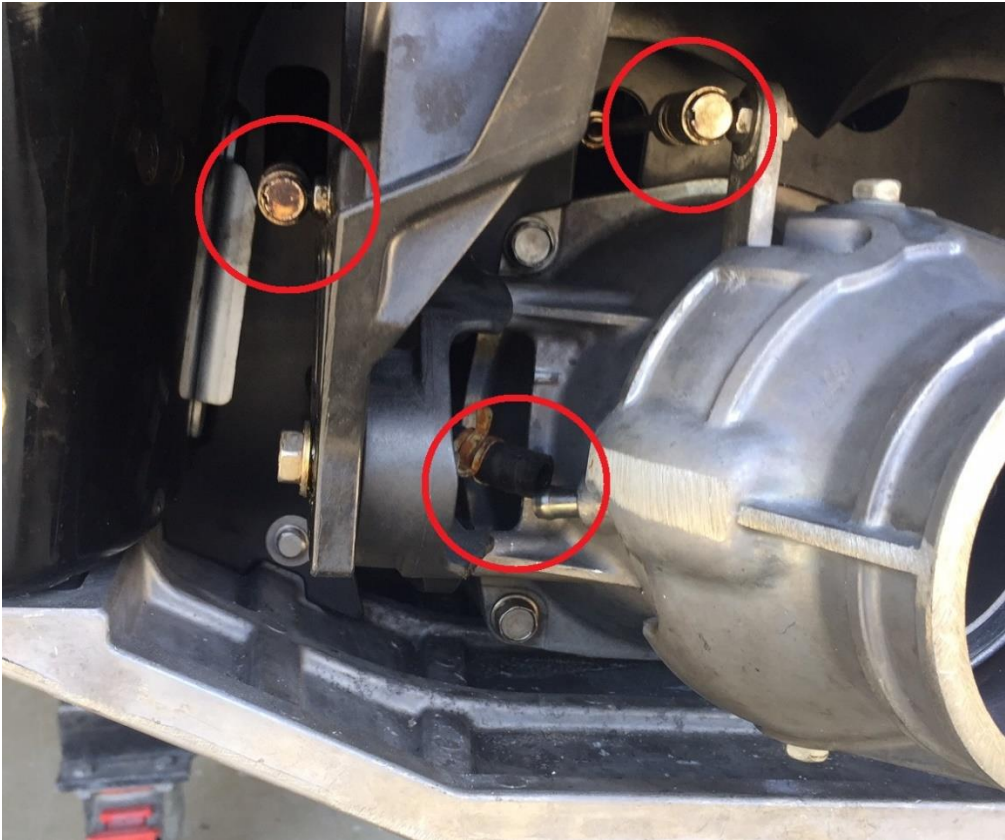
1



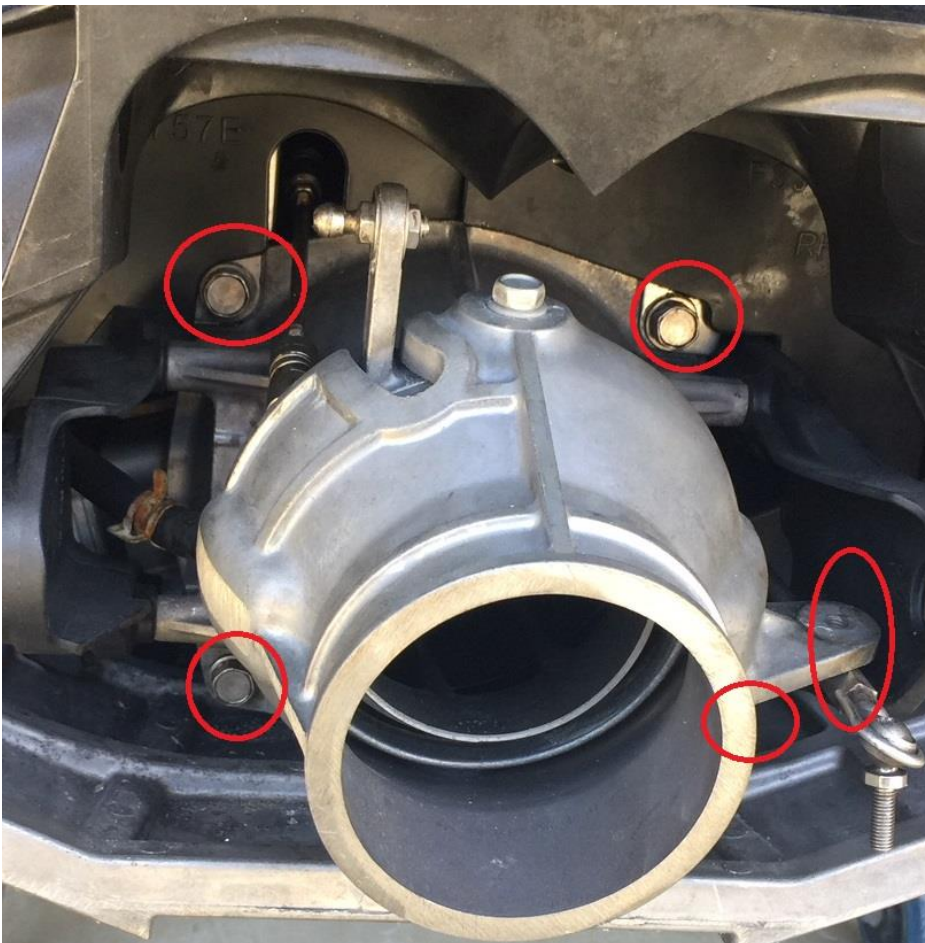
2



3



4





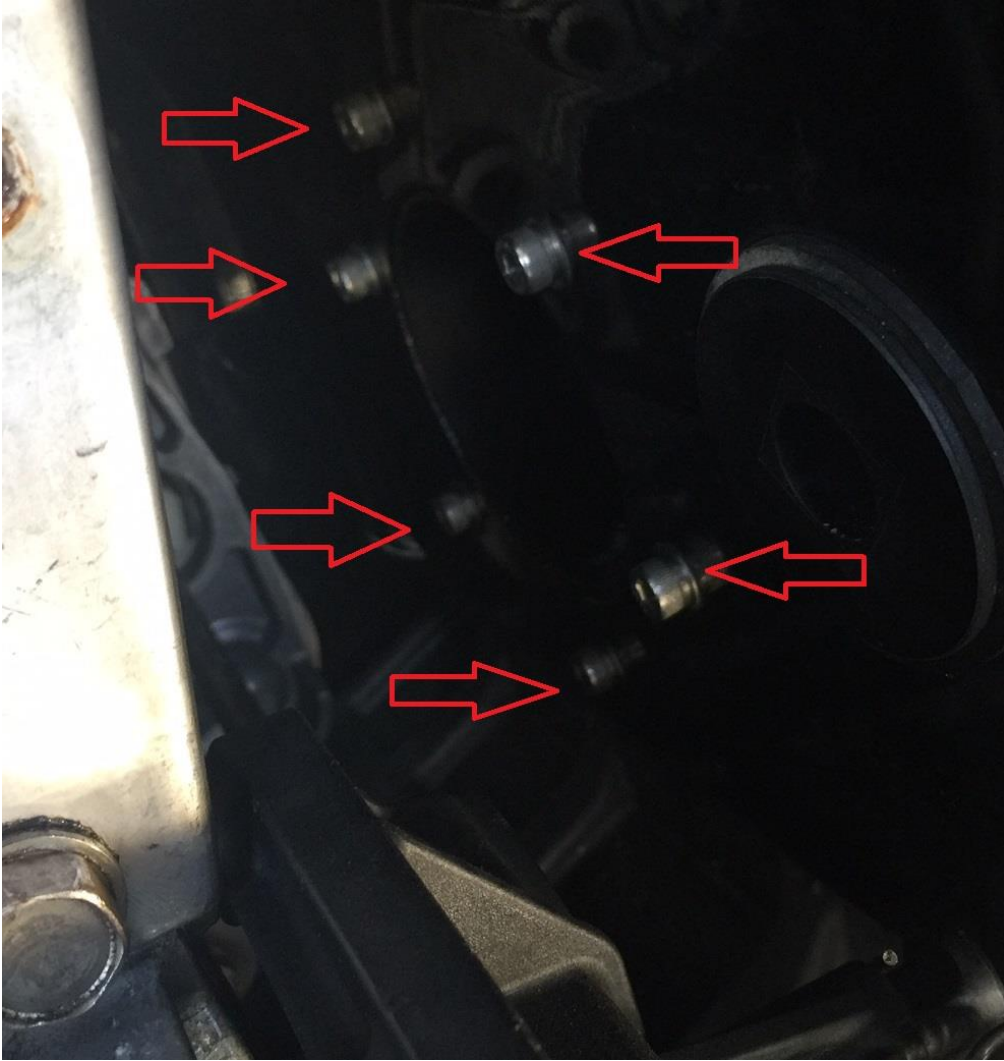
5



6



7

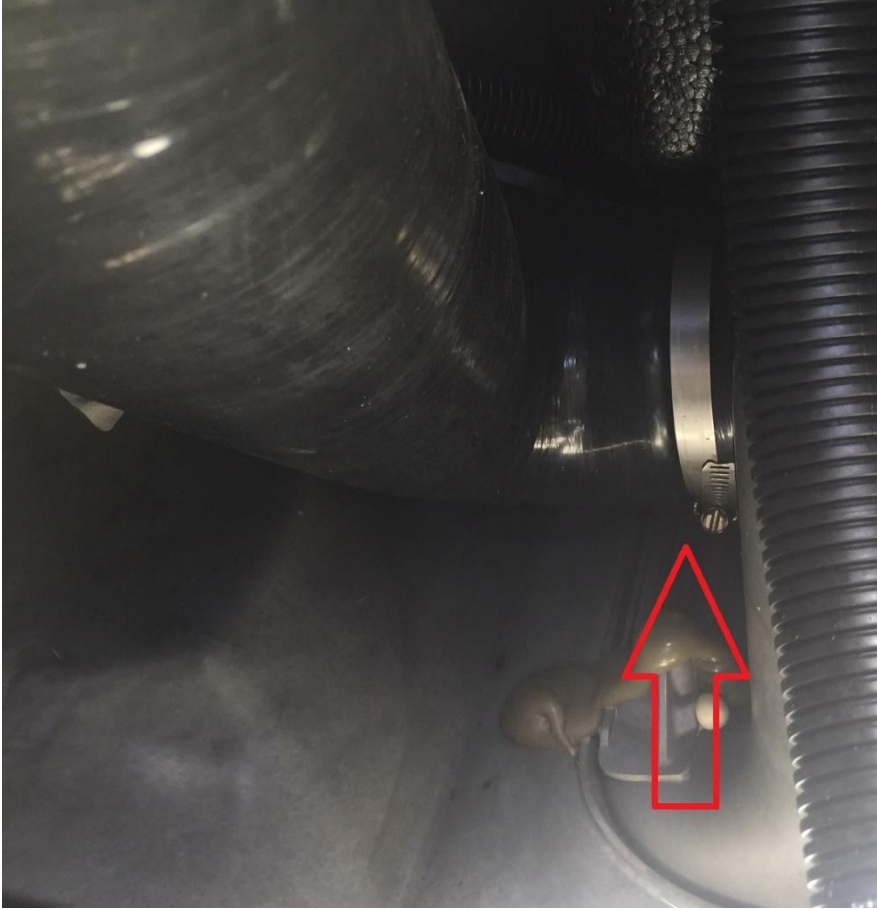


8





9



10

