

LIFE SIZE FIGURES

Part 3

mm

|| muckle | mannequins |



STAR WARS REBELS

MARVEL GUARDIANS OF THE GALAXY

MARVEL GUARDIANS OF THE GALAXY

© & TM Lucasfilm Ltd. Disney

© MARVEL



# INQUISITOR STAR WARS REBELS 204.5 CM



## INQUISITOR | STAR WARS REBELS

Material: Fiberglass

### Measurements

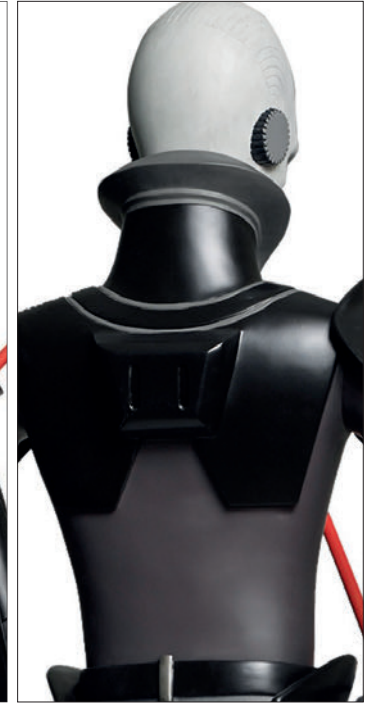
#### Rebels INQUISITOR:

Height 198 cm,  
Total Height with Base 204.5 cm

ARTICLE-NO: INQ-1

EAN CODE: 4313042492327

THIS FIGURE IS NOT LONGER AVAILABLE



MUCKLE MANNEQUINS GmbH  
Langlachweg 11  
D-68229 Mannheim

Fon 0049 (0) 621/8281395  
Fax 0049 (0) 621/8281840

[www.mucklefiguren.de](http://www.mucklefiguren.de)  
[www.mucklemannequins.de](http://www.mucklemannequins.de)  
[www.muckleinternational.com](http://www.muckleinternational.com)  
[www.mucklevision.com](http://www.mucklevision.com)  
e-mail: [info@mucklefiguren.de](mailto:info@mucklefiguren.de)

# STORMTROOPER I STAR WARS REBELS 192.5 CM



## STORMTROOPER I | STAR WARS REBELS

Material: Fiberglass

### Measurements

#### Rebels STORMTROOPER 1

Height 186 cm,  
Total Height with Base 192.5 cm

ARTICLE-NO: STO-1

EAN CODE: 4313042492334

THIS FIGURE IS NOT LONGER AVAILABLE



MUCKLE MANNEQUINS GmbH  
Langlachweg 11  
D-68229 Mannheim  
Fon 0049 (0) 621/8281395  
Fax 0049 (0) 621/8281840  
[www.mucklefiguren.de](http://www.mucklefiguren.de)  
[www.mucklemannequins.de](http://www.mucklemannequins.de)  
[www.muckleinternational.com](http://www.muckleinternational.com)  
[www.mucklelevision.com](http://www.mucklelevision.com)  
e-mail: [info@mucklefiguren.de](mailto:info@mucklefiguren.de)



# STORMTROOPER II STAR WARS REBELS 192.5 CM



## STORMTROOPER 2 | STAR WARS REBELS

Material: Fiberglass

### Measurements

Rebels STORMTROOPER 2

Height 186 cm,

Total Height with Base 192.5 cm

ARTICLE-NO: STO-2

EAN CODE: 4313042492341

THIS FIGURE IS NOT LONGER AVAILABLE



MUCKLE MANNEQUINS GmbH  
Langlachweg 11  
D-68229 Mannheim

Fon 0049 (0) 621/8281395  
Fax 0049 (0) 621/8281840

[www.mucklefiguren.de](http://www.mucklefiguren.de)  
[www.mucklemannequins.de](http://www.mucklemannequins.de)  
[www.muckleinternational.com](http://www.muckleinternational.com)  
[www.mucklevision.com](http://www.mucklevision.com)  
e-mail: [info@mucklefiguren.de](mailto:info@mucklefiguren.de)



# CHOPPER STAR WARS REBELS 99 CM



## CHOPPER | STAR WARS REBELS

Material: Fiberglass

### Measurements

#### Rebels CHOPPER

Height 99 cm

ARTICLE-NO: CHO-1

EAN CODE: 4313042492310

THIS FIGURE IS NOT LONGER AVAILABLE



MUCKLE MANNEQUINS GmbH  
Langlachweg 11  
D-68229 Mannheim

Fon 0049 (0) 621/8281395  
Fax 0049 (0) 621/8281840

[www.mucklefiguren.de](http://www.mucklefiguren.de)  
[www.mucklemannequins.de](http://www.mucklemannequins.de)  
[www.muckleinternational.com](http://www.muckleinternational.com)  
[www.mucklevision.com](http://www.mucklevision.com)  
e-mail: [info@mucklefiguren.de](mailto:info@mucklefiguren.de)



# SUPERMAN MAN OF STEEL 214 CM



## MAN OF STEEL.

**SUPERMAN | MAN OF STEEL**  
Material: Fiberglass

**Measurements**  
Height 190 cm, Weight approx. 20 kg  
Total Height with Base 214 cm  
Total Weight with Base approx. 32 kg  
Width 98 cm

**SUPERMAN BASE**  
Height 24 cm, Width 59 cm, Depth 83 cm  
Weight approx. 12 kg

**CARTON SIZES**  
**A:** 70 x 40 x 88 cm  
Content: Upper body, Weight: 13 kg  
**B:** 73 x 40 x 123 cm  
Content: Lowerbody, head, hands and cape (real cloth)  
Weight: 19 kg  
**C:** 66 x 37 x 105 cm  
Content: Base, Weight: 17 kg

ARTICLE-NO: SU-MOS  
EAN CODE: 0717228242111  
THIS FIGURE IS NOT LONGER AVAILABLE



MUCKLE MANNEQUINS GmbH  
Langlachweg 11  
D-68229 Mannheim  
Fon 0049 (0) 621/8281395  
Fax 0049 (0) 621/8281840  
www.mucklefiguren.de  
www.mucklemannequins.de  
www.muckleinternational.com  
www.mucklelevision.com  
e-mail: info@mucklefiguren.de



TM & © DC Comics.  
NB SHIELD: TM & © Warner  
s13)



# ROCKET GUARDIANS OF THE GALAXY 197 cm



## ROCKET | GUARDIANS OF THE GALAXY

Material Fiberglass

### Measurements

**Figure:** Height 101 cm, Total Height with Base 197 cm,  
Depth Figure 39 cm, Weight 15 kg

**Base:** Height 55 cm, Depth 46 cm, Weight 26 kg

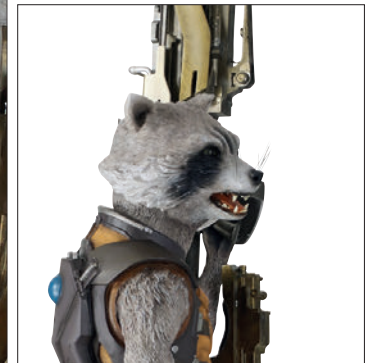
### CARTON SIZES

**A:** 107 x 72 x 45 cm, Weight: 15 kg  
Content: Weapon

**B:** 87 x 60 x 80 cm, Weight: 29 kg  
Content: Base

**C:** 105 x 36 x 28 cm, Weight: 10 kg  
Content: Body

ARTICLE-NO: ROR-1-GF  
EAN CODE: 0717228242074



MUCKLE MANNEQUINS GmbH  
Langlachweg 11  
D-68229 Mannheim  
Fon 0049 (0) 621/8281395  
Fax 0049 (0) 621/8281840  
[www.mucklefiguren.de](http://www.mucklefiguren.de)  
[www.mucklemannequins.de](http://www.mucklemannequins.de)  
[www.muckleinternational.com](http://www.muckleinternational.com)  
[www.mucklevision.com](http://www.mucklevision.com)  
e-mail: [info@mucklefiguren.de](mailto:info@mucklefiguren.de)



# IRON MAN IRON MAN 2 CLEAN VERSION 218 CM



## IRON MAN 2 CLEAN VERSION

Material: Fiberglass

### Measurements

Height 200 cm, Total Height with Base 218 cm  
Total Weight with Base approx. 60 kg  
Width 135 cm

### IRON MAN 2 BASE

Height 28 cm, Width 120 cm, Depth 83 cm

### CARTON SIZES

**A:** 94 x 89 x 47 cm  
Content: Upper body, Weight: 44 kg

**B:** 94 x 89 x 47 cm  
Content: Two legs, two arms  
Weight: 44 kg

**C:** 131 x 88 x 37 cm  
Content: Base, head, Weight: 43 kg

### LED light up functions:

Eyes, Hands, Breast, Base, Input Voltage: 110V-220V

ARTICLE-NO: IR-2 Clean  
EAN CODE: 4313042492433



MUCKLE MANNEQUINS GmbH  
Langlachweg 11  
D-68229 Mannheim  
Fon 00 49 (0) 621/8281395  
Fax 00 49 (0) 621/8281840  
www.mucklefiguren.de  
www.mucklemannequins.de  
www.muckleinternational.com  
www.mucklevision.com  
e-mail: info@mucklefiguren.de

# IRON MAN IRON MAN 2 BATTLEFIELD 218 CM



MARVEL STUDIOS  
**IRON MAN 2**

### IRON MAN 2 BATTLEFIELD

Material: Fiberglass

#### Measurements

Height 200 cm, Total Height with Base 218 cm

Total Weight with Base approx. 60 kg

Width 135 cm

#### IRON MAN 2 BASE

Height 28 cm, Width 120 cm, Depth 83 cm

#### CARTON SIZES

**A:** 145 x 47 x 56 cm

Content: Upper body, Weight: 18 kg

**B:** 94 x 89 x 47 cm

Content: Pant, hand and head

Weight: 42 kg

**C:** 131 x 88 x 37 cm

Content: Base, Weight: 43 kg

#### LED light up functions:

Eyes, Hands, Breast, Base, Input Voltage: 110V-220V

ARTICLE-NO: IR-2 BATTLE

EAN CODE: 4313042492181



MUCKLE MANNEQUINS GmbH  
Langlachweg 11  
D-68229 Mannheim  
Fon 0049 (0) 621/8281395  
Fax 0049 (0) 621/8281840  
www.mucklefiguren.de  
www.mucklemannequins.de  
www.muckleinternational.com  
www.mucklevision.com  
e-mail: info@mucklefiguren.de



# IRON MAN THE AVENGERS 208 CM



## IRON MAN | THE AVENGERS

Material: Fiberglass

### Measurements

Total Height with Base 208 cm

### CARTON SIZES

A: 94 x 89 x 47 cm

Content: Upper body, Weight: 13 kg

B: 145 x 47 x 56 cm

Content: 2 legs, 2 arms, head

Weight: 42 kg

C: 125 x 54 x 22 cm

Content: Base, Weight: 25 kg

### LED light up functions:

Eyes, Hands, Breast, Base, Input Voltage: 110V-220V

ARTICLE-NO: IR-AVENGERS

EAN CODE: 0717228242142



MUCKLE MANNEQUINS GmbH  
Langlachweg 11  
D-68229 Mannheim  
Fon 00 49 (0) 621/8281395  
Fax 00 49 (0) 621/8281840  
www.mucklefiguren.de  
www.mucklemannequins.de  
www.muckleinternational.com  
www.mucklevision.com  
e-mail: info@mucklefiguren.de

# THOR THE AVENGERS 240 CM



## THOR | THE AVENGERS

Material: Fiberglass

### Measurements

Total Height with Base 240 cm

### CARTON SIZES

**A:** 119 x 92 x 50 cm

Content: Upper body with head, left half arm  
right hand with hammer, Weight: 25 kg

**B:** 133 x 67 x 40 cm

Content: Main lower body, separate right leg  
Weight: 19 kg

**C:** 129 x 57 x 24 cm

Content: Base, Weight: 20 kg

ARTICLE-NO: THO-AVENGERS

EAN CODE: 0717228242128

THIS FIGURE IS NOT LONGER AVAILABLE



MUCKLE MANNEQUINS GmbH  
Langlachweg 11  
D-68229 Mannheim  
Fon 0049 (0) 621/8281395  
Fax 0049 (0) 621/8281840  
www.mucklefiguren.de  
www.mucklemannequins.de  
www.muckleinternational.com  
www.mucklevision.com  
e-mail: info@mucklefiguren.de



# CAPTAIN AMERICA THE AVENGERS 195 CM



## CAPTAIN AMERICA | THE AVENGERS

Material: Fiberglass

### Measurements

Total Height with Base 195 cm

### CARTON SIZES

**A:** 91 x 68 x 38 cm

Content: Upper body, right arm

Weight: 12 kg

**B:** 131 x 68 x 38 cm

Content: Lower body, right boot, head

Weight: 20 kg

**C:** 69 x 69 x 23 cm

Content: Shield, left arm

Weight: 20 kg

**D:** 125 x 54 x 22 cm

Content: Base, Weight: 8 kg

ARTICLE-NO: CAP-AM-AVENGERS

EAN CODE: 0717228242135



MUCKLE MANNEQUINS GmbH

Langlachweg 11

D-68229 Mannheim

Fon 0049 (0) 621/8281395

Fax 0049 (0) 621/8281840

[www.mucklefiguren.de](http://www.mucklefiguren.de)

[www.mucklemannequins.de](http://www.mucklemannequins.de)

[www.muckleinternational.com](http://www.muckleinternational.com)

[www.mucklevision.com](http://www.mucklevision.com)

e-mail: [info@mucklefiguren.de](mailto:info@mucklefiguren.de)

# HULK THE AVENGERS 280 CM



## HULK | THE AVENGERS

Material: Fiberglass

### Measurements

Total Height with Base 280 cm  
Depth 170 cm, Width 200 cm

### MDF-BOXES

Box A: 129 x 81 x 135 cm  
Content: Upper body, head, left arm, metal base  
Weight: 168 kg

Box B: 111 x 82 x 205 cm  
Content: Lower body, right arm  
Weight: 170 kg

ARTICLE-NO: HULK AVENGERS 1

EAN CODE: 0609465846606



MUCKLE MANNEQUINS GmbH  
Langlachweg 11  
D-68229 Mannheim  
Fon 00 49 (0) 621/8281395  
Fax 00 49 (0) 621/8281840  
[www.mucklefiguren.de](http://www.mucklefiguren.de)  
[www.mucklemannequins.de](http://www.mucklemannequins.de)  
[www.muckleinternational.com](http://www.muckleinternational.com)  
[www.mucklevision.com](http://www.mucklevision.com)  
e-mail: [info@mucklefiguren.de](mailto:info@mucklefiguren.de)



# HULK AVENGERS – AGE OF ULTRON 285 CM



## HULK | AVENGERS – AGE OF ULTRON

Material: Fiberglass

### Measurements

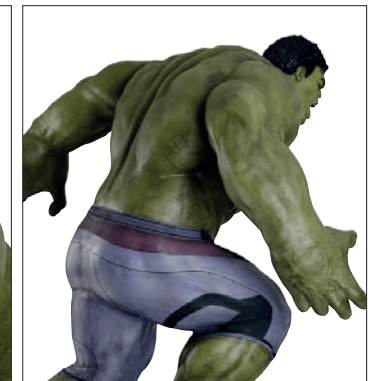
**Figure:** Total Height with Base 285 cm,  
Depth Figure 175 cm, Width 165 cm, Weight 285 kg  
**Base:** Height 96 cm

### MDF BOX SIZES

129 x 146 x 224 cm, 317 kg, standing  
129 x 89 x 160 cm, 152 kg, standing  
MDF Boxes

216 x 146 x 129 cm, 317 kg, reclining  
129 x 89 x 160 cm, 152 kg, reclining  
MDF Boxes

ARTICLE-NO: HU-AVENGERS 2  
EAN CODE: 4313042492297



MUCKLE MANNEQUINS GmbH  
Langlachweg 11  
D-68229 Mannheim  
Fon 00 49 (0) 621/8281395  
Fax 00 49 (0) 621/8281840  
[www.mucklefiguren.de](http://www.mucklefiguren.de)  
[www.mucklemannequins.de](http://www.mucklemannequins.de)  
[www.muckleinternational.com](http://www.muckleinternational.com)  
[www.mucklelevision.com](http://www.mucklelevision.com)  
e-mail: [info@mucklefiguren.de](mailto:info@mucklefiguren.de)

# HULK THE INCREDIBLE HULK 240 CM



## THE INCREDIBLE HULK

**HULK | THE INCREDIBLE HULK**  
Material: Fiberglass

**Measurements**  
**Figure:** Total Height with Base 240 cm

**CARTON SIZES**  
**A:** 112 x 95 x 66 cm, Weight 47 kg  
**B:** 112 x 53 x 43 cm, Weight 32 kg  
**C:** 176 x 85 x 69 cm, Weight 65 kg  
**D:** 129 x 68 x 54 cm, Weight 21 kg  
**E:** 150 x 82 x 3 cm, Weight 40 kg

ARTICLE-NO: HU-1  
EAN CODE: 0609465846583  
THIS FIGURE IS NOT LONGER AVAILABLE



MUCKLE MANNEQUINS GmbH  
Langlachweg 11  
D-68229 Mannheim  
Fon 0049 (0) 621/8281395  
Fax 0049 (0) 621/8281840  
[www.mucklefiguren.de](http://www.mucklefiguren.de)  
[www.mucklemannequins.de](http://www.mucklemannequins.de)  
[www.muckleinternational.com](http://www.muckleinternational.com)  
[www.mucklevision.com](http://www.mucklevision.com)  
e-mail: [info@mucklefiguren.de](mailto:info@mucklefiguren.de)



# HULK BUSTER AVENGERS – AGE OF ULTRON 335 CM



**HULK BUSTER | AVENGERS – AGE OF ULTRON**  
Material: Fiberglass

**Measurements**

**Figure:** Total Height with Base 335 cm,  
Depth Figure 186 cm, Width 309 cm, Weight 665 kg  
**Base:** Height 27 cm

**MDF BOX SIZES**

Box A: 183 x 125 x 170 cm  
Box B: 183 x 101 x 170 cm  
Box C: 183 x 138 x 137 cm  
Box D: 163 x 138 x 114 cm

Total volume: 13.05 cbm  
Total weight with MDF-boxes: approx. 1.500 kg

**ARTICLE-NO: HU-BUSTER AV2**  
EAN CODE: 4313042492280



MUCKLE MANNEQUINS GmbH  
Langlachweg 11  
D-68229 Mannheim  
Fon 00 49 (0) 621/8281395  
Fax 00 49 (0) 621/8281840  
[www.mucklefiguren.de](http://www.mucklefiguren.de)  
[www.mucklemannequins.de](http://www.mucklemannequins.de)  
[www.muckleinternational.com](http://www.muckleinternational.com)  
[www.mucklevision.com](http://www.mucklevision.com)  
e-mail: [info@mucklefiguren.de](mailto:info@mucklefiguren.de)



# CAPTAIN AMERICA THE WINTERSOLDIER 192 CM



**CAPTAIN AMERICA | THE WINTERSOLDIER**  
Material Fiberglass

**Measurements**

**Figure:** Total Height with Base 192 cm,  
Width 125 cm, Depth 87 cm, Weight 49 kg

**CARTON SIZES**

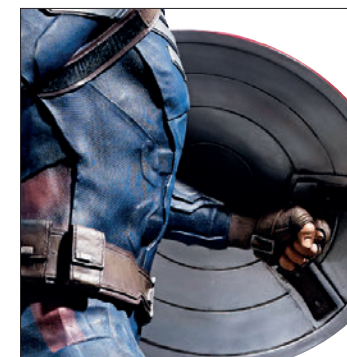
Total weight 74.5 kg

**A:** 86 x 78 x 44 cm, Weight: 18.5 kg  
Content: Upper body, head, right hand

**B:** 120 x 118 x 63 cm, Weight: 48 kg  
Content: Lower body, base

**C:** 70 x 70 x 28 cm, Weight: 8 kg  
Content: Shield with left arm

**ARTICLE-NO:** CAP-WS/1:1  
**EAN CODE:** 0609465846613



MUCKLE MANNEQUINS GmbH  
Langlachweg 11  
D-68229 Mannheim  
Fon 0049 (0) 621/8281395  
Fax 0049 (0) 621/8281840  
[www.mucklefiguren.de](http://www.mucklefiguren.de)  
[www.mucklemannequins.de](http://www.mucklemannequins.de)  
[www.muckleinternational.com](http://www.muckleinternational.com)  
[www.mucklelevision.com](http://www.mucklelevision.com)  
e-mail: [info@mucklefiguren.de](mailto:info@mucklefiguren.de)





# SPIDER-MAN THE AMAZING SPIDER-MAN 2 243 CM



## THE AMAZING SPIDER-MAN 2

**SPIDER-MAN | THE AMAZING SPIDER-MAN 2**  
Material: Fiberglass

**Measurements**

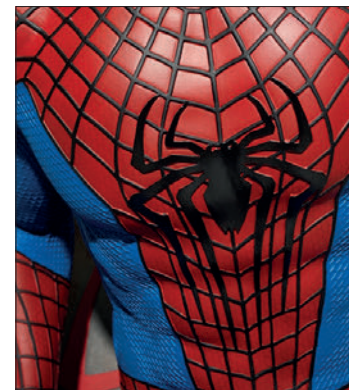
**Figure with Base:** Height 161 cm,  
Total Height with Base 243 cm,  
Width 90 cm, Depth Figur with Base 135 cm,  
Weight 100 kg

**CARTON SIZES**

**A:** 105 x 90 x 50 cm, Weight: 26 kg  
Content: Upper body, 2 arms, logo box

**B+C:** 145 x 89 x 48 cm, Weight: 88 kg  
Content: Base

ARTICLE-NO: SP-ASM-2/1:1  
EAN CODE: 0609465846675  
THIS FIGURE IS NOT LONGER AVAILABLE



MUCKLE MANNEQUINS GmbH  
Langlachweg 11  
D-68229 Mannheim  
Fon 00 49 (0) 621/8281395  
Fax 00 49 (0) 621/8281840  
[www.mucklefiguren.de](http://www.mucklefiguren.de)  
[www.mucklemannequins.de](http://www.mucklemannequins.de)  
[www.muckleinternational.com](http://www.muckleinternational.com)  
[www.mucklevision.com](http://www.mucklevision.com)  
e-mail: [info@mucklefiguren.de](mailto:info@mucklefiguren.de)

# BATMAN BATMAN ARKHAM CITY 204 CM



**BATMAN | BATMAN ARKHAM CITY**  
Material: Fiberglass

**Measurements**  
Total Height with Base 204 cm

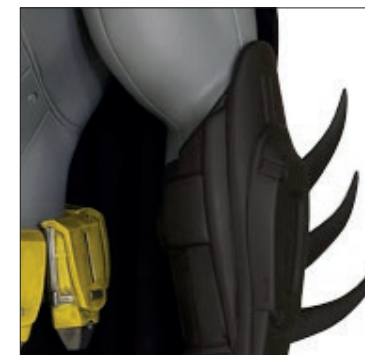
**CARTON SIZES**  
**A:** 74 x 71 x 53 cm  
Content: Head, two lower arms, small jacks, fabric cape,  
Weight: 12 kg

**B:** 80 x 60 x 45 cm  
Content: Upper body, knee armor parts  
Weight: 19 kg

**C:** 115 x 62 x 43 cm  
Content: Two legs, two boots, buckle and bags,  
Weight: 27 kg

**D:** 91 x 61 x 2 cm  
Content: Base  
Weight: 17 kg

ARTICLE-NO: BT-ARKHAM  
THIS FIGURE IS NOT LONGER AVAILABLE



MUCKLE MANNEQUINS GmbH  
Langlachweg 11  
D-68229 Mannheim  
Fon 00 49 (0) 621/8281395  
Fax 00 49 (0) 621/8281840  
[www.mucklefiguren.de](http://www.mucklefiguren.de)  
[www.mucklemannequins.de](http://www.mucklemannequins.de)  
[www.muckleinternational.com](http://www.muckleinternational.com)  
[www.mucklevision.com](http://www.mucklevision.com)  
e-mail: [info@mucklefiguren.de](mailto:info@mucklefiguren.de)



# BATMAN THE DARK KNIGHT RISES 190 CM



## BATMAN | THE DARK KNIGHT RISES

Material: Fiberglass

**Figure with Base:** Total Height with Base 190 cm,  
Dimensions Base 107 x 52 x 6 cm

### CARTON SIZES

**A:** 97 x 79 x 41 cm

Content: Upper body, two arms, head  
Weight: 20 kg

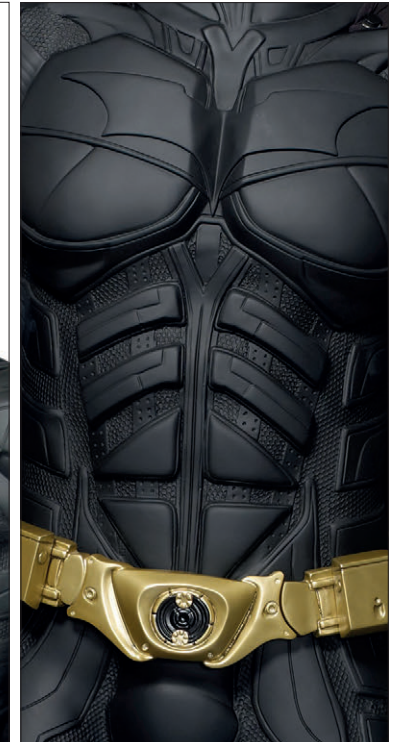
**B:** 128 x 43 x 52 cm

Content: Lowerbody, waist fitting, belts, arm jacks  
Weight: 25 kg

**C:** 114 x 60 x 20 cm

Content: Base  
Weight: 28 kg

**ARTICLE-NO: BTDK-RISES**  
EAN CODE: 0609465846521



MUCKLE MANNEQUINS GmbH  
Langlachweg 11  
D-68229 Mannheim  
Fon 0049 (0) 621/8281395  
Fax 0049 (0) 621/8281840  
[www.mucklefiguren.de](http://www.mucklefiguren.de)  
[www.mucklemannequins.de](http://www.mucklemannequins.de)  
[www.muckleinternational.com](http://www.muckleinternational.com)  
[www.mucklelevision.com](http://www.mucklelevision.com)  
e-mail: [info@mucklefiguren.de](mailto:info@mucklefiguren.de)



TM & © DC COMICS.  
WB SHIELD: TM & © WARNER BROS. ENTERT. INC.  
[S13]

# CATWOMAN THE DARK KNIGHT RISES 185 CM



## CATWOMAN | THE DARK KNIGHT RISES

Material: Fiberglass

Figure with Base: Total Height with Base 185 cm

### CARTON SIZES

A: 88 x 62 x 38 cm, Body, Weight 14 kg

B: 128 x 30 x 49 cm, Legs, Weight 17 kg

C: 114 x 60 x 20 cm, Base, Weight 28 kg

ARTICLE-NO: CTW

EAN CODE: 0609465846538



MUCKLE MANNEQUINS GmbH  
Langlachweg 11  
D-68229 Mannheim

Fon 00 49 (0) 621/8281395

Fax 00 49 (0) 621/8281840

[www.mucklefiguren.de](http://www.mucklefiguren.de)

[www.mucklemannequins.de](http://www.mucklemannequins.de)

[www.muckleinternational.com](http://www.muckleinternational.com)

[www.mucklelevision.com](http://www.mucklelevision.com)

e-mail: [info@mucklefiguren.de](mailto:info@mucklefiguren.de)



TM & © DC COMICS.  
WB SHIELD: TM & © WARNER BROS. ENTERT. INC.  
[S13]



# SPIDER-MAN THE AMAZING SPIDER-MAN 203 CM



## THE AMAZING SPIDER-MAN

**SPIDER-MAN | THE AMAZING SPIDER-MAN**  
Material: Fiberglass

**Figure:** Total Height with small Base 134 cm,  
Total Height with DVD-Base 203 cm,  
Dimensions small base 58 x 58 x 10 cm,  
Dimensions DVD base 58 x 58 x 110 cm

**CARTON SIZES**

**A:** 77 x 50 x 63 cm  
Content: Upper body, Weight: 10 kg

**B:** 77 x 68 x 60 cm  
Content: ower body, 2 arms, Weight: 19 kg

**C:** 65 x 64 x 29 cm  
Content: Small Base, Weight: 13 kg

**A+B:**  
Content: DVD-Base for approx. 148 DVDs,  
A: 90 x 60 x 60cm, 29 kg – middle part DVD rack  
B: 65 x 66 x 46cm, 19 kg – bottom part DVD rack

ARTICLE-NO: SP-4 AMAZING  
THIS FIGURE IS NOT LONGER AVAILABLE



MUCKLE MANNEQUINS GmbH  
Langlachweg 11  
D-68229 Mannheim  
Fon 0049 (0) 621/8281395  
Fax 0049 (0) 621/8281840  
www.mucklefiguren.de  
www.mucklemannequins.de  
www.muckleinternational.com  
www.mucklelevision.com  
e-mail: info@mucklefiguren.de

# CAT ALICE MC GEE 80 CM



**CAT | ALICE MC GEE**  
Material: Fiberglass

**Figure:** Height 80 cm, Height Base 30 cm

**CARTON SIZES**  
A: 103 x 87 x 41 cm  
Weight: 20 kg

**ARTICLE-NO: CAT-1**  
EAN CODE: 4313042492433



MUCKLE MANNEQUINS GmbH  
Langlachweg 11  
D-68229 Mannheim  
Fon 0049 (0) 621/8281395  
Fax 0049 (0) 621/8281840  
[www.mucklefiguren.de](http://www.mucklefiguren.de)  
[www.mucklemannequins.de](http://www.mucklemannequins.de)  
[www.muckleinternational.com](http://www.muckleinternational.com)  
[www.mucklelevision.com](http://www.mucklelevision.com)  
e-mail: [info@mucklefiguren.de](mailto:info@mucklefiguren.de)





# SUPERMAN CLASSIC 194 CM



**SUPERMAN CLASSIC**  
Material: Fiberglass

**Measurements**

**Figure:** Total Height 194 cm,  
Height Base 6 cm, Weight 38 kg

**CARTON SIZES**

**A:** 100 x 74 x 54 cm, Weight: 24 kg  
Content: Upper body, head, right hand

**B:** 164 x 45 x 58 cm, Weight: 17 kg  
Content: Lower body, base

**C:** 102 x 99 x 43 cm, Weight: 29 kg  
Content: Shield with left arm

**ARTICLE-NO: SU-1**  
EAN CODE: 4313042492167



MUCKLE MANNEQUINS GmbH  
Langlachweg 11  
D-68229 Mannheim  
Fon 0049 (0) 621/8281395  
Fax 0049 (0) 621/8281840  
[www.mucklefiguren.de](http://www.mucklefiguren.de)  
[www.mucklemannequins.de](http://www.mucklemannequins.de)  
[www.muckleinternational.com](http://www.muckleinternational.com)  
[www.mucklelevision.com](http://www.mucklelevision.com)  
e-mail: [info@mucklefiguren.de](mailto:info@mucklefiguren.de)



™ & © DC Comics.  
WB SHIELD: TM & © Warner  
1513)

# BATMAN BATMAN BEGINS 180 CM



## BATMAN | BATMAN BEGINS

Material: Fiberglass

**Figure:** Height 180.5 cm, Height Base 54 cm

### CARTON SIZES

**A:** 114 x 58 x 43 cm, Weight 16 kg

**B:** 98 x 57 x 33 cm, Weight 14 kg

**C:** 63 x 63 x 58 cm, Weight 18 kg

**D:** 65 x 65 x 56 cm, Weight 16 kg

**ARTICLE-NO: BB-1**

EAN CODE: 4313042492440



MUCKLE MANNEQUINS GmbH  
Langlachweg 11  
D-68229 Mannheim  
Fon 0049 (0) 621/8281395  
Fax 0049 (0) 621/8281840  
[www.mucklefiguren.de](http://www.mucklefiguren.de)  
[www.mucklemannequins.de](http://www.mucklemannequins.de)  
[www.muckleinternational.com](http://www.muckleinternational.com)  
[www.mucklelevision.com](http://www.mucklelevision.com)  
e-mail: [info@mucklefiguren.de](mailto:info@mucklefiguren.de)



# TERMINATOR T600 TERMINATOR SALVATION 220 CM

## TERMINATOR SALVATION

### TERMINATOR T600 | TERMINATOR SALVATION

Material Fiberglass

#### Measurements

**Figure:** Total Height 195 cm,  
Height Base 25 cm

#### CARTON SIZES

Total weight 95 kg

**A:** 84 x 104 x 49 cm, Weight: 33.5 kg  
Content: Upper body, left arm, head, back pack

**B:** 83 x 148 x 55 cm, Weight: 45 kg  
Content: Lower body, right arm with gun,  
frontpart of the base, small parts

**C:** 83 x 83 x 31 cm, Weight: 17.5 kg  
Content: Round base

ARTICLE-NO: T-600

EAN CODE: 0717228241879

THIS FIGURE IS NO LONGER AVAILABLE



MUCKLE MANNEQUINS GmbH  
Langlachweg 11  
D-68229 Mannheim  
Fon 0049 (0) 621/8281395  
Fax 0049 (0) 621/8281840  
[www.mucklefiguren.de](http://www.mucklefiguren.de)  
[www.mucklemannequins.de](http://www.mucklemannequins.de)  
[www.muckleinternational.com](http://www.muckleinternational.com)  
[www.mucklelevision.com](http://www.mucklelevision.com)  
e-mail: [info@mucklefiguren.de](mailto:info@mucklefiguren.de)

# BATMAN CLASSIC BT-2 190 CM



**BATMAN | BATMAN CLASSIC BT-2**  
Material: Fiberglass

**Figure with Base:** Total Height with Base 190 cm,  
Dimensions Base 107 x 52 x 6 cm

**CARTON SIZES**

**A:** 89 x 70 x 62 cm

Content: Upper body, two arms, head  
Weight: 23 kg

**B:** 137 x 112 x 67 cm

Content: Lowerbody, waist fitting, belts, arm jacks  
Weight: 45 kg

**C:** 122 x 60 x 12 cm

Content: Base  
Weight: 18 kg

**ARTICLE-NO: BT-2**  
EAN CODE: 0609465846521



MUCKLE MANNEQUINS GmbH  
Langlachweg 11  
D-68229 Mannheim  
Fon 0049 (0) 621/8281395  
Fax 0049 (0) 621/8281840  
[www.mucklefiguren.de](http://www.mucklefiguren.de)  
[www.mucklemannequins.de](http://www.mucklemannequins.de)  
[www.muckleinternational.com](http://www.muckleinternational.com)  
[www.mucklelevision.com](http://www.mucklelevision.com)  
e-mail: [info@mucklefiguren.de](mailto:info@mucklefiguren.de)



TM & © DC COMICS.  
WB SHIELD: TM & © WARNER BROS. ENTERT. INC.  
(S13)



# BATMAN CLASSIC BT-1 190 CM



## BATMAN | BATMAN CLASSIC BT-1

Material: Fiberglass

**Figure with Base:** Total Height with Base 190 cm,  
Dimensions Base 107 x 52 x 6 cm

### CARTON SIZES

**A:** 89 x 70 x 62 cm

Content: Upper body, two arms, head  
Weight: 23 kg

**B:** 137 x 112 x 67 cm

Content: Lowerbody, waist fitting, belts, arm jacks  
Weight: 25 kg

**C:** 122 x 60 x 12 cm

Content: Base  
Weight: 28 kg

ARTICLE-NO: BT-1  
EAN CODE: 0609465846521



MUCKLE MANNEQUINS GmbH  
Langlachweg 11  
D-68229 Mannheim  
Fon 0049 (0) 621/8281395  
Fax 0049 (0) 621/8281840  
[www.mucklefiguren.de](http://www.mucklefiguren.de)  
[www.mucklemannequins.de](http://www.mucklemannequins.de)  
[www.muckleinternational.com](http://www.muckleinternational.com)  
[www.mucklelevision.com](http://www.mucklelevision.com)  
e-mail: [info@mucklefiguren.de](mailto:info@mucklefiguren.de)



# SPIDER-MAN SPIDER-MAN COMIC 182 CM



## SPIDER-MAN | SPIDER-MAN COMIC

Material: Fiberglass

**Figure:** Height with Base 182 cm

### CARTON SIZES

SPIDERMAN COMIC Metal plate

**A:** 84 x 54 x 36 cm, Weight 22 kg

**B:** 114 x 53 x 46 cm, Weight 19 kg

ARTICLE-NO: SP-1-ME

METAL PLATE EAN CODE: 4313042492198



MUCKLE MANNEQUINS GmbH  
Langlachweg 11  
D-68229 Mannheim  
Fon 0049 (0) 621/8281395  
Fax 0049 (0) 621/8281840  
[www.mucklefiguren.de](http://www.mucklefiguren.de)  
[www.mucklemannequins.de](http://www.mucklemannequins.de)  
[www.muckleinternational.com](http://www.muckleinternational.com)  
[www.mucklelevision.com](http://www.mucklelevision.com)  
e-mail: [info@mucklefiguren.de](mailto:info@mucklefiguren.de)



# SPIDER-MAN SPIDER-MAN COMIC 207 CM



## SPIDER-MAN | SPIDER-MAN COMIC

Material: Fiberglass

**Figure:** Height 182 cm, Height Stone Base 25 cm  
Total height 207 cm

### CARTON SIZES

SPIDERMAN COMIC Stone Base

**A:** 84 x 54 x 36 cm, Weight 11 kg

**B:** 114 x 53 x 46 cm, Weight 19 kg

**C:** 142 x 44 x 33 cm, Weight 24 kg

**ARTICLE-NO: SP-1-ST**

STONE BASE EAN CODE: 4313042492204



MUCKLE MANNEQUINS GmbH  
Langlachweg 11  
D-68229 Mannheim  
Fon 0049 (0) 621/8281395  
Fax 0049 (0) 621/8281840  
[www.mucklefiguren.de](http://www.mucklefiguren.de)  
[www.mucklemannequins.de](http://www.mucklemannequins.de)  
[www.muckleinternational.com](http://www.muckleinternational.com)  
[www.mucklelevision.com](http://www.mucklelevision.com)  
e-mail: [info@mucklefiguren.de](mailto:info@mucklefiguren.de)

# DOBBY HARRY POTTER 90 CM



## Harry Potter

### DOBBY | HARRY POTTER

Material: Fiberglass

**Figure:** Total Height with small Base 95 cm

### CARTON SIZES

A: 108 x 47 x 49 cm, Weight 17 kg

ARTICLE-NO: DO-1  
EAN CODE: 4313042492211



MUCKLE MANNEQUINS GmbH  
Langlachweg 11  
D-68229 Mannheim  
Fon 0049 (0) 621/8281395  
Fax 0049 (0) 621/8281840  
[www.mucklefiguren.de](http://www.mucklefiguren.de)  
[www.mucklemannequins.de](http://www.mucklemannequins.de)  
[www.muckleinternational.com](http://www.muckleinternational.com)  
[www.mucklelevision.com](http://www.mucklelevision.com)  
e-mail: [info@mucklefiguren.de](mailto:info@mucklefiguren.de)



TM & © DC COMICS.  
WB SHIELD: TM & ©WARNER BROS. ENTERT. INC.  
[S13]



# JOKER THE DARK KNIGHT 213 CM



**JOKER | THE DARK KNIGHT**  
Material Fiberglass

**Measurements**  
**Figure:** Total Height 178 cm,  
Height Base 35 cm

**CARTON SIZES**  
**A:** 77 x 58 x 49 cm, Weight 12.3 kg  
**B:** 136 x 72 x 53 cm, Weight 27 kg  
**C:** 84 x 58 x 33 cm, Weight 15.1 kg

**ARTICLE-NO: JOK-1**  
EAN CODE: 0609465846576



MUCKLE MANNEQUINS GmbH  
Langlachweg 11  
D-68229 Mannheim  
Fon 0049 (0) 621/8281395  
Fax 0049 (0) 621/8281840  
[www.mucklefiguren.de](http://www.mucklefiguren.de)  
[www.mucklemannequins.de](http://www.mucklemannequins.de)  
[www.muckleinternational.com](http://www.muckleinternational.com)  
[www.mucklevision.com](http://www.mucklevision.com)  
e-mail: [info@mucklefiguren.de](mailto:info@mucklefiguren.de)



TM & © DC COMICS.  
WB SHIELD: TM & © WARNER BROS. ENTERT. INC.  
[S13]

# BATMAN THE DARK KNIGHT 224 CM



## BATMAN | THE DARK KNIGHT

Material Fiberglass

### Measurements

**Figure:** Total Height Figure without Base 189 cm,  
Height Base 35 cm

### CARTON SIZES

**A:** 94 x 72 x 44 cm, Weight 21 kg  
**B:** 119 x 94 x 45 cm, Weight 39 kg  
**C:** 106 x 65 x 33 cm, Weight 27 kg

ARTICLE-NO: BTDK-1  
EAN CODE: 0609465846569



MUCKLE MANNEQUINS GmbH  
Langlachweg 11  
D-68229 Mannheim  
Fon 0049 (0) 621/8281395  
Fax 0049 (0) 621/8281840  
[www.mucklefiguren.de](http://www.mucklefiguren.de)  
[www.mucklemannequins.de](http://www.mucklemannequins.de)  
[www.muckleinternational.com](http://www.muckleinternational.com)  
[www.mucklevision.com](http://www.mucklevision.com)  
e-mail: [info@mucklefiguren.de](mailto:info@mucklefiguren.de)



TM & © DC COMICS.  
WB SHIELD: TM & © WARNER BROS. ENTERT. INC.  
(S13)



# BATMAN DAWN OF JUSTICE 212 CM



**BATMAN | DAWN OF JUSTICE**  
Material Fiberglass

**Measurements**

**Figure:** Total Height Figure without Base 212 cm,  
Width 85 cm, Depth 110 cm

**CARTON SIZES**

**A:** 92 x 73 x 47 cm, Net weight 17 kg  
**B:** 139 x 64 x 51 cm, Net weight 27 kg  
**C:** 98 x 71 x 63 cm, Net weight 29 kg

**ARTICLE-NO: BT-BVSS-1**  
EAN CODE: 4313042492389



MUCKLE MANNEQUINS GmbH  
Langlachweg 11  
D-68229 Mannheim  
Fon 0049 (0) 621/8281395  
Fax 0049 (0) 621/8281840  
[www.mucklefiguren.de](http://www.mucklefiguren.de)  
[www.mucklemannequins.de](http://www.mucklemannequins.de)  
[www.muckleinternational.com](http://www.muckleinternational.com)  
[www.mucklevision.com](http://www.mucklevision.com)  
e-mail: [info@mucklefiguren.de](mailto:info@mucklefiguren.de)



BATMAN VS SUPERMAN: DAWN OF JUSTICE and all related characters and elements © & TM DC Comics and Warner Bros. Entertainment Inc. WB SHIELD: TM & © WBEL. (s16)

# SUPERMAN DAWN OF JUSTICE 235 CM



## SUPERMAN | DAWN OF JUSTICE

Material Fiberglass

### Measurements

**Figure:** Total Height Figure without Base 235 cm,  
Width 85 cm, Depth 80 cm

### CARTON SIZES

**A:** 85 x 75 x 43 cm, Weight: 16 kg

**B:** 135 x 63 x 54 cm Weight: 33 kg

**C:** 88 x 81 x 49 cm, Weight: 32 kg

ARTICLE-NO: SU-BVSS-1  
EAN CODE: 4313042492396



MUCKLE MANNEQUINS GmbH  
Langlachweg 11  
D-68229 Mannheim  
Fon 0049 (0) 621/8281395  
Fax 0049 (0) 621/8281840  
[www.mucklefiguren.de](http://www.mucklefiguren.de)  
[www.mucklemannequins.de](http://www.mucklemannequins.de)  
[www.muckleinternational.com](http://www.muckleinternational.com)  
[www.mucklevision.com](http://www.mucklevision.com)  
e-mail: [info@mucklefiguren.de](mailto:info@mucklefiguren.de)



# IRON MAN CIVIL WAR – CAPTAIN AMERICA 194 CM



**IRON MAN**  
Material: Fiberglass

**Measurements**  
**Figure:** Height 178 cm, Total Height with Base 194 cm,  
Width Figure 105 cm, Weight 73 kg  
**Base:** Height 16 cm, Width 76 cm, Depth 136 cm

**CARTON SIZES**  
**A:** 90 x 55 x 48 cm, Weight: 16 kg  
Content: Upper body  
**B:** 97 x 37 x 40 cm, Weight: 14 kg  
Content: Two arms  
**C:** 136 x 58 x 50 cm, Weight: 25 kg  
Content: Lower body, head  
**D:** 150 x 88 x 27 cm, Weight: 37 kg  
Content: Base

**LED light up functions:**  
Eyes, Hands, Breast, Input Voltage: 110V-220V

ARTICLE-NO: IR-AV-CW  
EAN CODE: 4313042492419



MUCKLE MANNEQUINS GmbH  
Langlachweg 11  
D-68229 Mannheim  
Fon 0049 (0) 621/8281395  
Fax 0049 (0) 621/8281840  
www.mucklefiguren.de  
www.mucklemannequins.de  
www.muckleinternational.com  
www.mucklevision.com  
e-mail: info@mucklefiguren.de

# WAR MACHINE CIVIL WAR – CAPTAIN AMERICA 214 CM



**WAR MACHINE**  
Material: Fiberglass

**Measurements**

**Figure:** Height 198 cm, Total Height with Base 214 cm,  
Depth Figure 80 cm, Weight 66.6 kg  
**Base:** Height 16 cm, Width 85 cm, Depth diagonal 108 cm

**CARTON SIZES**

**A:** 99 x 58 x 60 cm, Weight: 20 kg  
Content: Upper body, weapon A, weapon B

**B:** 96 x 41 x 45 cm, Weight: 16 kg  
Content: Two arms

**C:** 128 x 54 x 54 cm, Weight: 27 kg  
Content: Lower body, head

**D:** 97 x 98 x 27 cm, Weight: 24 kg  
Content: Base

**LED light up functions:**

Eyes, Hands, Breast, Input Voltage: 110V-220V

ARTICLE-NO: WM-AV-CW  
EAN CODE: 4313042492426



MUCKLE MANNEQUINS GmbH  
Langlachweg 11  
D-68229 Mannheim  
Fon 0049 (0) 621/8281395  
Fax 0049 (0) 621/8281840  
[www.mucklefiguren.de](http://www.mucklefiguren.de)  
[www.mucklemannequins.de](http://www.mucklemannequins.de)  
[www.muckleinternational.com](http://www.muckleinternational.com)  
[www.mucklevision.com](http://www.mucklevision.com)  
e-mail: [info@mucklefiguren.de](mailto:info@mucklefiguren.de)



# DOOM SPACE MARINE 205 CM



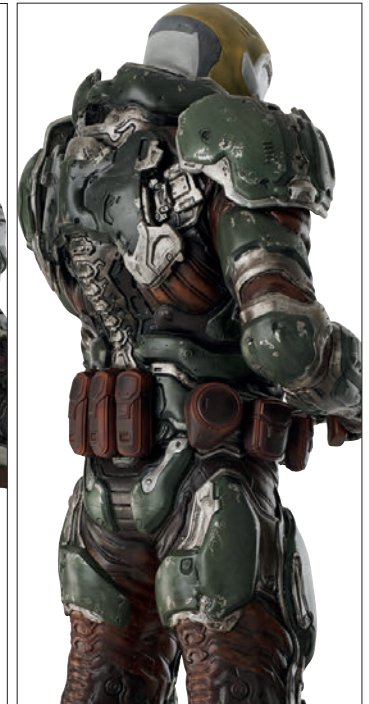
# DOOM

**SPACE MARINE**  
Material: Fiberglass

**Measurements**  
**Figure:** Total Height with Base 205 cm,  
Depth Figure 82 cm, Width 59 cm  
**Base:** Height 16 cm  
**Total weight:** 93 kg with cartons

**CARTON SIZES**  
**A:** 105 x 93 x 60 cm  
Upper body, two arms  
**B:** 130 x 84 x 50 cm  
Lower body, head, bags  
**C:** 104 x 71 x 30 cm  
Base

ARTICLE-NO: D00-1  
EAN CODE: 0717228241886  
THIS FIGURE IS NOT LONGER AVAILABLE



MUCKLE MANNEQUINS GmbH  
Langlachweg 11  
D-68229 Mannheim  
Fon 0049 (0) 621/8281395  
Fax 0049 (0) 621/8281840  
[www.mucklefiguren.de](http://www.mucklefiguren.de)  
[www.mucklemannequins.de](http://www.mucklemannequins.de)  
[www.muckleinternational.com](http://www.muckleinternational.com)  
[www.mucklevision.com](http://www.mucklevision.com)  
e-mail: [info@mucklefiguren.de](mailto:info@mucklefiguren.de)



# IRON MAN 3 MARK XLII LIMITED EDITION 444 52 cm



## MARVEL IRON MAN 3

### IRONMAN 3 (LIMITED 444)

With Robert Downey-head and helmet-version  
Material: Polystone

#### Measurements

Height 52 cm, Width 51 cm, Depth 26 cm, Weight 7 kg net

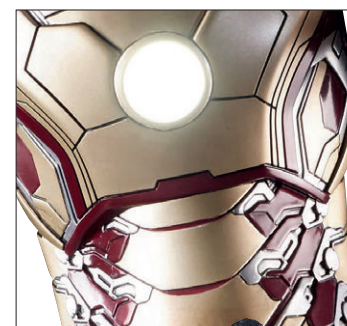
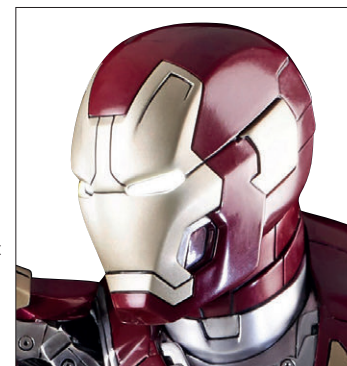
#### LED light up functions:

Eyes, Hands, Breast, Input Voltage: 110V-220V or  
Battery use

ARTICLE-NO: IR-3-KF

EAN CODE: 0609465846668

THIS FIGURE IS NOT LONGER AVAILABLE



MUCKLE MANNEQUINS GmbH  
Langlachweg 11  
D-68229 Mannheim  
Fon 0049 (0) 621/8281395  
Fax 0049 (0) 621/8281840  
www.mucklefiguren.de  
www.mucklemannequins.de  
www.muckleinternational.com  
www.mucklevision.com  
e-mail: info@mucklefiguren.de



# CAPTAIN AMERICA THE WINTERSOLDIER LIMITED EDITION 444 61 CM



**CAPTAIN AMERICA | THE WINTERSOLDIER (LIMITED 444)**  
Material: Polystone

**Measurements**  
Height 61 cm, Width 38.5 cm, Depth 20.5 cm, Weight 7 kg net

ARTICLE-NO: TWS - CAP-WS-KF  
EAN CODE: 0609465846637  
THIS FIGURE IS NOT LONGER AVAILABLE



MUCKLE MANNEQUINS GmbH  
Langlachweg 11  
D-68229 Mannheim  
Fon 0049 (0) 621/8281395  
Fax 0049 (0) 621/8281840  
www.mucklefiguren.de  
www.mucklemannequins.de  
www.muckleinternational.com  
www.mucklelevision.com  
e-mail: info@mucklefiguren.de



# SPIDER-MAN THE AMAZING SPIDER-MAN 2 LIMITED EDITION 444 81 CM



THE AMAZING  
SPIDER-MAN 2

SPIDER-MAN | THE AMAZING SPIDER-MAN 2  
(LIMITED 444)

Material: Polystone

**Measurements**

Height 81 cm, Width 30 cm, Depth 30 cm, Weight 11 kg net

ARTICLE-NO: SP-ASM-2-KF

EAN CODE: 0609465846699

THIS FIGURE IS NOT LONGER AVAILABLE



MUCKLE MANNEQUINS GmbH  
Langlachweg 11  
D-68229 Mannheim  
Fon 0049 (0) 621/8281395  
Fax 0049 (0) 621/8281840  
[www.mucklefiguren.de](http://www.mucklefiguren.de)  
[www.mucklemannequins.de](http://www.mucklemannequins.de)  
[www.muckleinternational.com](http://www.muckleinternational.com)  
[www.mucklevision.com](http://www.mucklevision.com)  
e-mail: [info@mucklefiguren.de](mailto:info@mucklefiguren.de)



# DEINONYCHUS RAPTOR RA-2 164 CM



**DEINONYCHUS | RAPTOR RA-2**  
Material: Fiberglass | Eyes: Glass

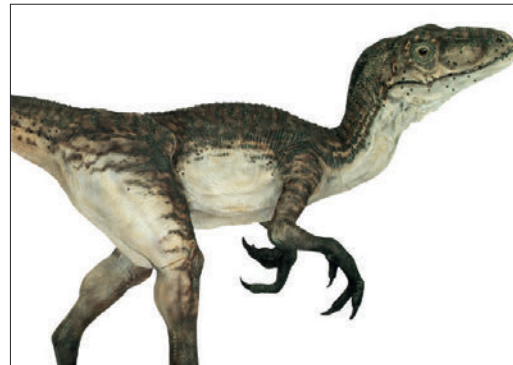
**Measurements**

**Figure:** Body length 325 cm, Body height 164 cm  
Body width approx. 53 cm  
Weight figure with base: approx. 58 kg

**CARTON SIZES**

A: 102 x 72 x 48 cm, Weight: approx. 23 kg  
B: 116 x 70 x 53 cm, Weight: approx. 34 kg  
C: 129 x 75 x 35 cm, Weight: approx. 21 kg

**ARTICLE-NO: RA-2**  
EAN CODE: 4313042492242



MUCKLE MANNEQUINS GmbH  
Langlachweg 11  
D-68229 Mannheim  
Fon 0049 (0) 621/8281395  
Fax 0049 (0) 621/8281840  
[www.mucklefiguren.de](http://www.mucklefiguren.de)  
[www.mucklemannequins.de](http://www.mucklemannequins.de)  
[www.muckleinternational.com](http://www.muckleinternational.com)  
[www.mucklevision.com](http://www.mucklevision.com)  
e-mail: [info@mucklefiguren.de](mailto:info@mucklefiguren.de)

# DEINONYCHUS RAPTOR RA-1 175 CM



**DEINONYCHUS | RAPTOR RA-1**  
Material: Fiberglass | Eyes: Glass

**Measurements**

**Figure:** Body length 310 cm, Body height 175 cm  
Body width approx. 85 cm  
Weight figure with base: approx. 60 kg

**CARTON SIZES**

A: 100 x 90 x 47 cm, Weight: approx. 28 kg  
B: 117 x 54 x 71 cm, Weight: approx. 21 kg  
C: 104 x 88 x 46 cm, Weight: approx. 27 kg

**ARTICLE-NO: RA-1**  
EAN CODE: 4313042492235



MUCKLE MANNEQUINS GmbH  
Langlachweg 11  
D-68229 Mannheim  
Fon 0049 (0) 621/8281395  
Fax 0049 (0) 621/8281840  
[www.mucklefiguren.de](http://www.mucklefiguren.de)  
[www.mucklemannequins.de](http://www.mucklemannequins.de)  
[www.muckleinternational.com](http://www.muckleinternational.com)  
[www.mucklevision.com](http://www.mucklevision.com)  
e-mail: [info@mucklefiguren.de](mailto:info@mucklefiguren.de)



# TYRANNOSAURUS REX T-REX 1 206 CM



#### T-REX 1

Material: Fiberglass | Eyes: Glass

#### Measurements

Body length 207 cm, Body height 121 cm  
High head with base 206 cm  
Body width: approx. 81 cm  
Metallbase 120 x 60x 0.4 cm  
Weight head: approx. 67.5 kg  
Weight head with base: approx. 105 kg

#### WOODENBOX SIZES

133 x 91 x 219 cm,  
Weight nett: 150 kg  
Gross weight: approx. 288 kg

ARTICLE-NO: TR-1

EAN CODE: 0717228242395



MUCKLE MANNEQUINS GmbH  
Langlachweg 11  
D-68229 Mannheim

Fon 0049 (0) 621/8281395  
Fax 0049 (0) 621/8281840

[www.mucklefiguren.de](http://www.mucklefiguren.de)  
[www.mucklemannequins.de](http://www.mucklemannequins.de)  
[www.muckleinternational.com](http://www.muckleinternational.com)  
[www.mucklevision.com](http://www.mucklevision.com)  
e-mail: [info@mucklefiguren.de](mailto:info@mucklefiguren.de)



# TYRANNOSAURUS REX T-REX 2 206 CM



## T-REX 2

Material: Fiberglass | Eyes: Glass

### Measurements

Body length 203 cm, Body height 118 cm  
Height head with base 206 cm  
Body width: approx. 81 cm  
Metallbase 120 x 60x 0.4 cm  
Weight head: approx. 48 kg  
Weight head with base: approx. 87.5 kg

### WOODENBOX SIZES

133 x 91 x 219 cm,  
Weight nett: 150 kg  
Gross weight: approx. 269 kg

ARTICLE-NO: TR-2

EAN CODE: 0717228242401



MUCKLE MANNEQUINS GmbH  
Langlachweg 11  
D-68229 Mannheim

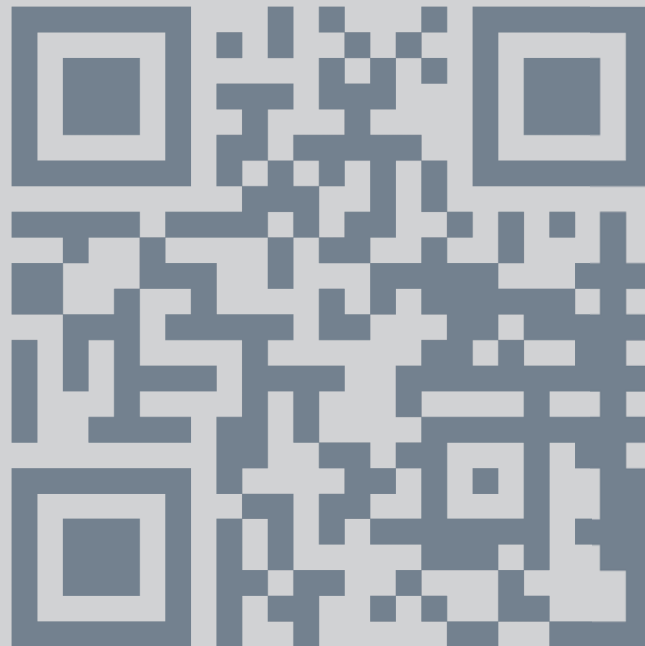
Fon 0049 (0) 621/8281395  
Fax 0049 (0) 621/8281840

[www.mucklefiguren.de](http://www.mucklefiguren.de)  
[www.mucklemannequins.de](http://www.mucklemannequins.de)  
[www.muckleinternational.com](http://www.muckleinternational.com)  
[www.mucklevision.com](http://www.mucklevision.com)  
e-mail: [info@mucklefiguren.de](mailto:info@mucklefiguren.de)





MUCKLE MANNEQUINS GmbH  
Langlachweg 11  
D-68229 Mannheim  
Fon 0049 (0) 621/8281395  
Fax 0049 (0) 621/8281840  
[www.mucklefiguren.de](http://www.mucklefiguren.de)  
[www.mucklemannequins.de](http://www.mucklemannequins.de)  
[www.muckleinternational.com](http://www.muckleinternational.com)  
[www.mucklevision.com](http://www.mucklevision.com)  
e-mail: [info@mucklefiguren.de](mailto:info@mucklefiguren.de)



Kontaktdaten Händler | Retailer field