

LIFE SIZE FIGURES

mm

|| muckle | mannequins |



THE
BATMAN DC

Harry Potter

Harry Potter



THE BATMAN and all related characters and elements © & ™ DC Comics and Warner Bros. Entertainment Inc. (s22)



WIZARDING WORLD characters, names and related indicia are © & ™ Warner Bros. Entertainment Inc. WB SHIELD, © & ™ WBEL Publishing Rights, JKR. (s21)

MUCKLE MANNEQUINS GMBH HAS SPECIALIZED IN THE MANUFACTURING OF 1:1 REPLICAS SINCE 1993, BUT THEY ALSO CREATE AND PRODUCE SMALL FIGURINES AND ACCESSORIES OF CHARACTERS IN THE FIELD OF MOVIES, TV AND GAMES.

THE REPLICAS ARE PRODUCED AS LICENSED FIGURES OR SPECIAL EDITIONS FOR ALL THE BIG BRANDS. MUCKLE MANNEQUINS' EXPERIENCE AND CLOSE COOPERATION WITH LEADING DESIGNERS AND DEVELOPERS HAS MADE THEIR PRODUCTS WELL-KNOWN ALL OVER THE WORLD.

THE RANGE OF PRODUCTS CONTAINS MUCH SOUGHT-AFTER COLLECTORS FIGURES AND FIGURINES, AS WELL AS 1:1 REPLICAS OF CHARACTERS OF BLOCKBUSTER MOVIES, MONSTERS FROM MOVIES OR GAMES, BAD GUYS, HEROES, CREATURES FROM THE FANTASY GENRE OF TV OR PC GAMES, AND SPECIAL EDITIONS FROM THE SAME FIELD OF PRODUCTS.

MUCKLE MANNEQUINS' CREATIVE TEAM INCLUDES KNOWN SCULPTORS, MODELLERS PAINTERS AND COSTUME DESIGNERS THAT ALTOGETHER TRUE TO DETAIL AND VERY AUTHENTICALLY CREATE HIGH-QUALITY AND UNIQUE REPLICAS.

MUCKLE MANNEQUINS HAS MADE IT THEIR BUSINESS TO ALWAYS PROVIDE HIGH-QUALITY PRODUCTS AND ALSO OFFER THEIR PARTNERS, CLIENTS AND CUSTOMERS A VERY GOOD PRICE-PERFORMANCE RATIO. THEY HAVE MADE A NAME FOR THEMSELVES WITH EXACTLY THIS COMPANY PHILOSOPHY.

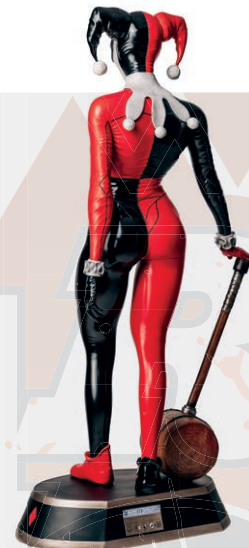


INDEX

HARLEY QUINN	CORE HQ-1	4
AQUAMAN	THE LOST KINGDOM AQ-AQ2-1	5
SEVERUS SNAPE	THE CHAMBER OF SECRETS SN-HPCS-1	6
HAGRID	THE CHAMBER OF SECRETS HA-HPCS-1	7
DONATELLO	TEENAGE MUTANT NINJA TURTLES DO-NTMM-1	8
LEONARDO	TEENAGE MUTANT NINJA TURTLES LE-NTMM-1	9
MICHELANGELO	TEENAGE MUTANT NINJA TURTLES MI-NTMM-1	10
RAPHAEL	TEENAGE MUTANT NINJA TURTLES RA-NTMM-1	11
HARRY POTTER	THE CHAMBER OF SECRETS HP-HPCS-1	12
RON WEASLEY	THE CHAMBER OF SECRETS RO-HPCS-1	13
HERMIONE GRANGER	THE CHAMBER OF SECRETS HE-HPCS-1	14
HARRY POTTER	VERSION FIRMA SCHLEICH HP-HPCS-2	15
THE FLASH	THE FLASH TF-FL-1	16
BATMAN KEATON	THE FLASH TF-BT-1	17
CHASE	PAW PATROL CH-PAPW-1	18
SKYE	PAW PATROL SK-PAPW-1	19

HARLEY QUINN CORE 193 CM

mm
|| muckle | mannequins |



**HARLEY
Quinn**

HARLEY QUINN | CORE

Material: Fiberglass, Polyresin

MEASUREMENTS

Figure: Height 176 cm,

Figure with base 193 cm

Width figure with base 100 cm

Base: Height 17 cm,
width 85 cm, depth 54 cm

CARTON SIZES

A: 85 x 52 x 50 cm, 14 kg

B: 109 x 52 x 32 cm, 11 kg

C: 112 x 52 x 26 cm, 10 kg

D: Base 100 x 72 x 32 cm, 17 kg

ARTICLE-NO: HQ-1

EAN CODE: 0096224882935



AQUAMAN THE LOST KINGDOM 230 CM



AQUAMAN | THE LOST KINGDOM

Material: Fiberglass, Polyresin

MEASUREMENTS

Figure: Height 195 cm,

Figure with base 230 cm

Width 80 cm, depth 65 cm

Base:

Height 35 cm, width 98 cm,

depth 80 cm



CARTON SIZES

A: 98 x 55 x 54 cm, 17 kg

B: 135 x 73 x 55 cm, 29 kg

C: 87 x 90 x 65 cm, 25 kg

D: 80 x 87 x 54 cm, 22 kg

ARTICLE-NO: AQ-AQ2-1

EAN CODE: 0096224883291



SEVERUS SNAPE THE CHAMBER OF SECRETS 206 CM



**SEVERUS SNAPE
THE CHAMBER OF SECRETS**
Material: Fiberglass, Polyresin
Material Coat: Fiberglass

MEASUREMENTS
Figure: Height 184 cm,
Figure with base 206 cm
Figure: Width 65 cm, Depth 44 cm
Base: Width 63 cm, Depth 60 cm,
Height 22 cm

CARTON SIZES
A: 83 x 57 x 42 cm, 13 kg
B: 105 x 47 x 49 cm, 20 kg
C: 83 x 57 x 54 cm, 17 kg
D: Base 75 x 75 x 35 cm, 17 kg

ARTICLE-NO: SN-HPCS-1
EAN CODE: 0096224883383



WIZARDING WORLD characters, names and related indicia are © & ™ Warner Bros. Entertainment Inc. WB SHIELD: © & ™ WBEL. Publishing Rights © JKR. (s23)

HAGRID THE CHAMBER OF SECRETS 283 CM



HAGRID THE CHAMBER OF SECRETS

Material: Fiberglass, Polyresin
Material Coat: Fiberglass

MEASUREMENTS

Figure: Height 260 cm,
Figure with base 283 cm
Figure: Width 117 cm
Base: Height 23 cm, Width 100 cm
Depth 90 cm
Weight with base 185 kg

Packaging sizes

PLY wood box: 120 x 80 x 200 cm, 137 kg
MDF box: 110 x 103 x 161 cm, 211 kg



WIZARDING WORLD characters, names and related indicia are © & ™ Warner Bros. Entertainment Inc. WB SHIELD: © & ™ WBEL. Publishing Rights © JKR. (s23)

ARTICLE-NO: HA-HPCS-1

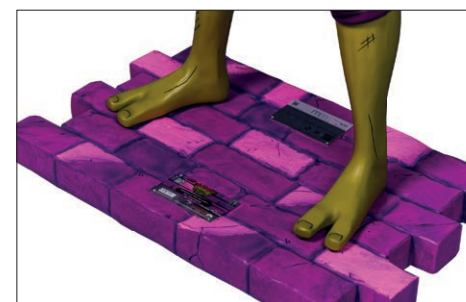
EAN CODE: 0096224883406

DONATELLO

TEENAGE MUTANT NINJA TURTLES

170 CM

mm
|| muckle | mannequins |



DONATELLO TEENAGE MUTANT NINJA TURTLES

Material Figure: Fiberglass

Measurements

Figure: Height 162 cm, figure with base 170 cm

Base: Width 94 cm, depth 56 cm, height 8 cm

CARTON SIZES

A: 112 x 60 x 62 cm

B: 111 x 48 x 40 cm

C: 105 x 67 x 23 cm

Weight net 44 kg, gross 69 kg

ARTICLE-NO: DO-NTMM-1
EAN CODE: 0096224883505

nickelodeon™
MOVIES



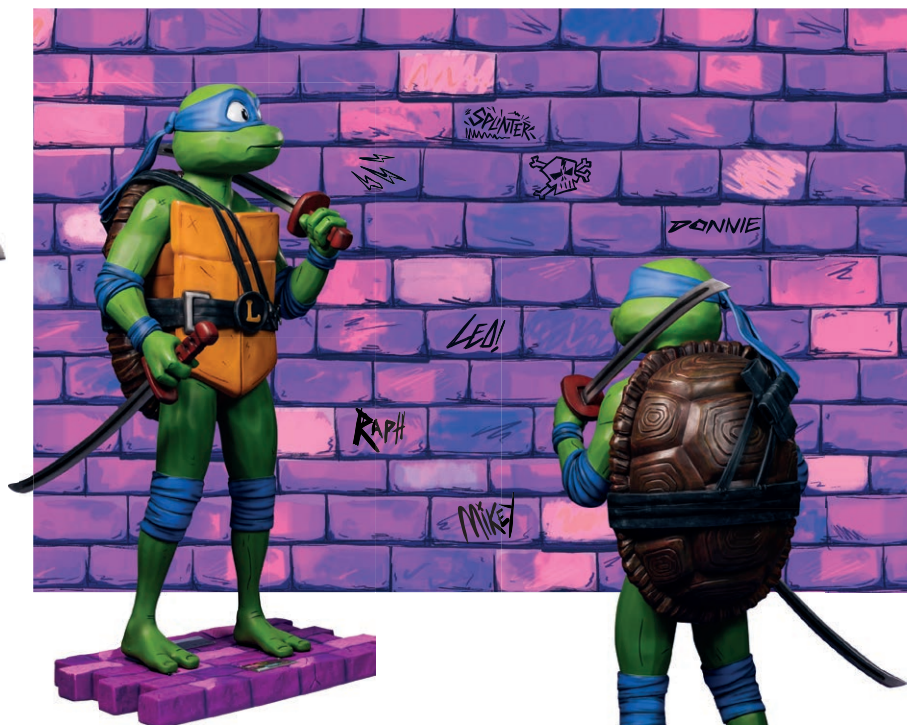
©2023 Paramount Pictures. All Rights Reserved.
Teenage Mutant Ninja Turtles and all related titles, logos and characters are trademarks of Viacom Overseas Holdings C.V

LEONARDO

TEENAGE MUTANT NINJA TURTLES

172 CM

mm
|| muckle | mannequins |



LEONARDO TEENAGE MUTANT NINJA TURTLES

Material Figure: Fiberglass

Measurements

Figure: Height 164 cm, figure with base 172 cm

Base: Width 94 cm, depth 56 cm, height 8 cm

CARTON SIZES

A: 110 x 65 x 62 cm

B: 103 x 46 x 38 cm

C: 105 x 67 x 23 cm

Weight net 38 kg, gross 55 kg

ARTICLE-NO: LE-NTMM-1

EAN CODE: 0096224883536

nickelodeon
MOVIES



©2023 Paramount Pictures. All Rights Reserved.
Teenage Mutant Ninja Turtles and all related titles, logos and characters are trademarks of Viacom Overseas Holdings C.V

MICHELANGELO

TEENAGE MUTANT NINJA TURTLES

162 CM

mm
|| muckle | mannequins |



MICHELANGELO TEENAGE MUTANT NINJA TURTLES

Material Figure: Fiberglass

Measurements

Figure: Height 154 cm, figure with base 162 cm

Base: Width 94 cm, depth 56 cm, height 8 cm

CARTON SIZES

A: 100 x 72 x 68 cm

B: 93 x 46 x 42 cm

C: 105 x 67 x 23 cm

Weight net 45 kg, gross 65 kg

ARTICLE-NO: MI-NTMM-1
EAN CODE: 0096224883512

nickelodeon
MOVIES



©2023 Paramount Pictures. All Rights Reserved.
Teenage Mutant Ninja Turtles and all related titles, logos and characters are trademarks of Viacom Overseas Holdings C.V.

RAPHAEL

TEENAGE MUTANT NINJA TURTLES

178 CM

mm
|| muckle | monnequins |



RAPHAEL
TEENAGE MUTANT NINJA TURTLES
Material Figure: Fiberglass

Measurements
Figure: Height 170 cm, figure with base 178 cm
Base: Width 94 cm, depth 56 cm, height 8 cm

CARTON SIZES
A: 111 x 79 x 75 cm
B: 98 x 61 x 41 cm
C: 105 x 67 x 23 cm
Weight net 43 kg, gross 65 kg

ARTICLE-NO: RA-NTMM-1
EAN CODE: 0096224883529

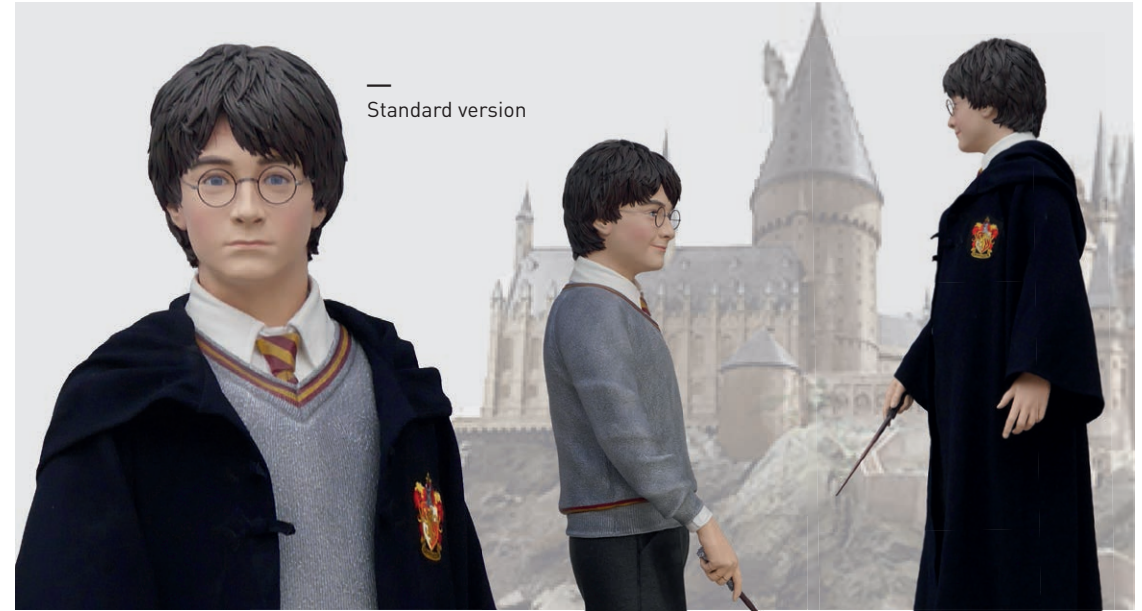
nickelodeon
MOVIES



©2023 Paramount Pictures. All Rights Reserved.
Teenage Mutant Ninja Turtles and all related titles, logos and characters are trademarks of Viacom Overseas Holdings C.V

HARRY POTTER THE CHAMBER OF SECRETS 174 CM

The Harry Potter figure includes two different heads



**HARRY POTTER
THE CHAMBER OF SECRETS**
Material Figure: Fiberglass, Polyresin
Material Coat: Fabric
Measurements
Figure:
Height 152 cm, figure with base 174 cm
Base: Width 61 cm, depth 59 cm, height 22 cm

CARTON SIZES
A: 64 x 41 x 55 cm, 14 kg
B: 94 x 60 x 38 cm, 14 kg
C: Base 85 x 69 x 33 cm, 17 kg
Weight net 33 kg, gross 45 kg

ARTICLE-NO: HP-HPCS-1
EAN CODE: 0096224883222

RON WEASLEY THE CHAMBER OF SECRETS 179 CM



RON WEASLEY
THE CHAMBER OF SECRETS
Material: Fiberglass, Polyresin
Material Coat: Fabric

Measurements

Figure:

Height 157 cm, figure with base 179 cm

Base: Width 61 cm, depth 59 cm, height 22 cm

CARTON SIZES

A: 66 x 44 x 39 cm, 8,5 kg

B: 98 x 48 x 44 cm, 15,5 kg

C: Base 85 x 69 x 33 cm, 17 kg

Weight net 30,5 kg, gross 41 kg



ARTICLE-NO: RO-HPCS-1
EAN CODE: 0096224883239



WIZARDING WORLD characters, names and related indicia are © & ™ Warner Bros. Entertainment Inc. WB SHIELD: © & ™ WBEL. Publishing Rights © JKR. (s23)

HERMIONE GRANGER THE CHAMBER OF SECRETS 169 CM



HERMIONE GRANGER THE CHAMBER OF SECRETS

Material: Fiberglass, Polyresin
Material Coat: Fabric

Measurements
Figure: Height 147 cm,
figure with base 169 cm
Base: Width 61 cm,
depth 59 cm, height 22 cm

CARTON SIZES
A: 43 x 56 x 39 cm, 10 kg
B: 76 x 47 x 46 cm, 15 kg
C: Base 85 x 69 x 33 cm, 17 kg
Weight net 31 kg, gross 42 kg

ARTICLE-NO: HE-HPCS-1
EAN CODE: 0096224883246



WIZARDING WORLD characters, names and related
indicia are © & ™ Warner Bros. Entertainment Inc.
WB SHIELD: © & ™ WBEL Publishing Rights © JKR. (s23)

HARRY POTTER THE CHAMBER OF SECRETS 152 CM



Diese Figur ist
nur über SCHLEICH
erhältlich
—
This figure is
only via SCHLEICH
available



SCHLEICH HARRY POTTER WITH OWL THE CHAMBER OF SECRETS

Material: Fiberglass, Polyresin
Material Coat: Fiberglass

Measurements

Height figure 152 cm
Width figure 86 cm
Depth figure 75 cm
Metal base 55 x 50 cm, thickness 4 mm

CARTON SIZES

A: 41 x 39 x 30 cm, 24.55 kg
B: 148 x 59 x 45 cm, 17 kg
C: 96 x 43 x 40 cm, 11.5 kg
Weight net 40 kg, gross 53.05 kg

ARTICLE-NO: HP-HPCS-2
EAN CODE: 0096224883390

schleich

where stories begin



WIZARDING WORLD characters, names and related indicia are © & ™ Warner Bros. Entertainment Inc. WB SHIELD: © & ™ WBEI. Publishing Rights © JKR. (s23)

THE FLASH THE FLASH 210 CM



THE FLASH | THE FLASH

Material: Fiberglass, Polyresin

MEASUREMENTS

Figure: Height 165 cm,
figure with base 210 cm
depth of figure 161 cm
width of figure 134 cm

Rock Stone Base:

Width 93 cm, depth 143 cm, height 45 cm

CARTON SIZES

A: 82 x 77 x 42 cm, 19 kg
B: 146 x 58 x 42 cm, 22 kg
C: Top Base 142 x 100 x 31 cm, 31 kg
D: Bottom Base 102 x 102 x 46 cm, 38 kg
Weight net 75.5 kg, gross 110 kg

ARTICLE-NO: TF-FL-1

EAN CODE: 0096224883178

BATMAN KEATON THE FLASH 228 CM



BATMAN KEATON | THE FLASH

Material: Fiberglass, Polyresin

MEASUREMENTS

Figure: Height 183 cm,
figure with base 228 cm
width figure with base 109 cm

Rock Stone Base:

Diameter 91 cm, height 45 cm

CARTON SIZES

A: 51 x 49 x 37 cm, 7.5 kg
B: 64 x 55 x 42 cm, 15 kg
C: 134 x 74 x 49 cm, 22 kg
D: Top Base 100 x 100 x 27 cm, 28.5 kg
E: Bottom Base 102 x 102 x 46 cm, 37 kg
Weight net 75.2 kg, gross 110 kg



ARTICLE-NO: TF-BT-1

EAN CODE: 0096224883185



THE FLASH and all related characters and elements © & ™ DC and Warner Bros. Entertainment Inc. WB SHIELD: © & ™ WBEI.(s23)

CHASE PAW PATROL 82 CM

mm
|| muckle | mannequins |



optional
with
Tower Pedest



CHASE | PAW PATROL

Material: Fiberglass, Polyresin

MEASUREMENTS

Figure: Height 82 cm,
width figure 46 cm, depth figure 70 cm

CARTON SIZES

A: 43 x 43 x 52 cm, 7 kg
B: 76 x 47 x 42 cm, 12 kg
Weight net 13 kg, gross 19 kg

OPTIONAL TOWER PODEST

Diameter 56 cm, height 85 cm

CARTON SIZE

77 x 70 x 64 cm, 26 kg

ARTICLE-NO: TOWER-PAWP-1

EAN CODE: 0096224883338

ARTICLE-NO: CH-PAWP-1

EAN CODE: 0096224883314

SKYE PAW PATROL 72 CM

mm
|| muckle | mannequins |



—
optional
with
Tower Pedest



SKYE | PAW PATROL

Material: Fiberglass, Polyresin

MEASUREMENTS

Figure: Height 72 cm,
width figure 46 cm, depth figure 61 cm

CARTON SIZES

A: 55 x 50 x 51 cm, 9.5 kg
B: 63 x 38 x 38 cm, 8 kg
Weight net 11 kg, gross 17.5 kg

OPTIONAL TOWER PODEST

Diameter 56 cm, height 85 cm

CARTON SIZE

77 x 70 x 64 cm, 26 kg

ARTICLE-NO: TOWER-PAWP-1

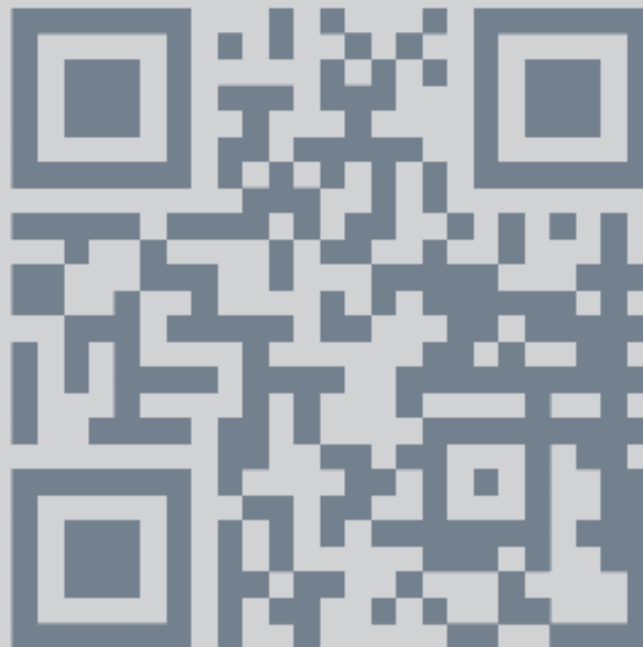
EAN CODE: 0096224883338

ARTICLE-NO: SK-PAWP-1

EAN CODE: 0096224883321



MUCKLE MANNEQUINS GmbH
Langlachweg 11
D-68229 Mannheim
Fon 0049 (0) 621/8281395
Fax 0049 (0) 621/8281840
www.mucklefiguren.de
www.mucklemannequins.de
www.muckleinternational.com
www.mucklevision.com
e-mail: info@mucklefiguren.de



Kontaktdaten Händler | Retailer field