



# THE THUNDER

I N S T A L L   I N S T R U C T I O N S

# HARDWARE CHECKLIST

Exact hardware counts may vary based on the options selected at checkout.

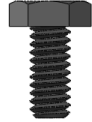
**12**  
M5 Hex  
(40mm)



**32**  
Socket button  
(1/4"-20 x 1")



**12**  
Hex bolt  
(1/4"-20 x 9/16")



**6**  
1/4"-20  
(1/2")



**18**  
1/4"-20"  
T-nut



**12**  
M5 Bonded  
washer



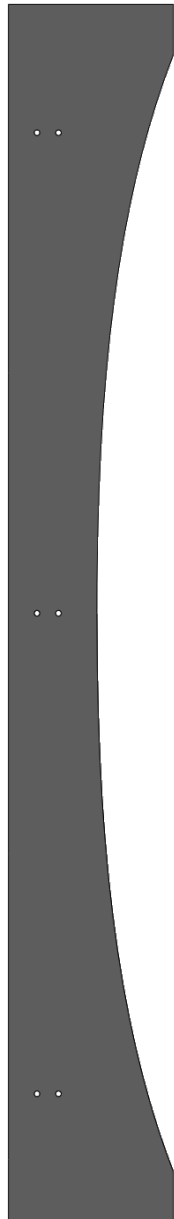
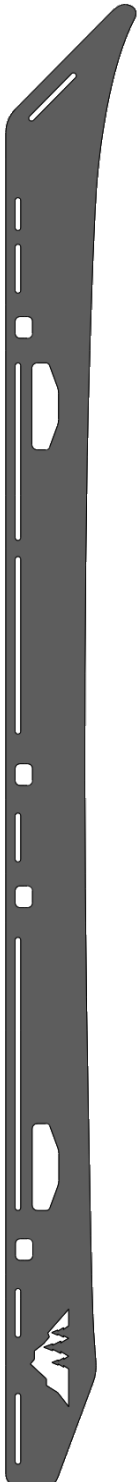
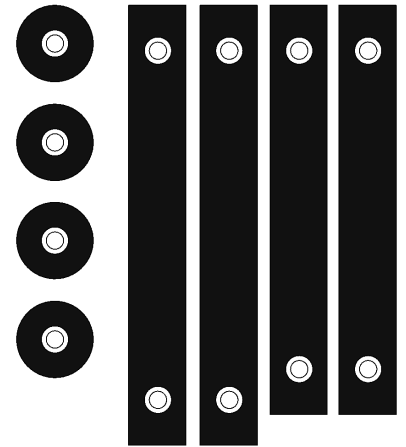
**50**  
1/4" Flat  
washer



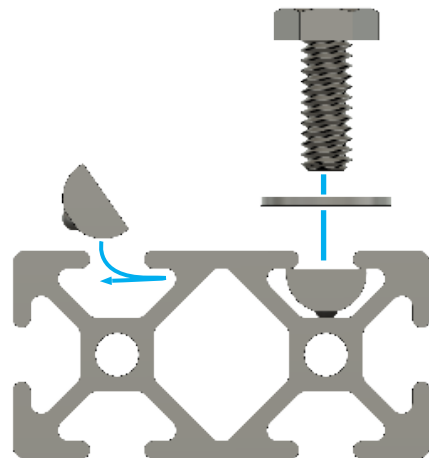
**6**  
Mounting  
Brackets



Rubber  
Mounting  
Spacers



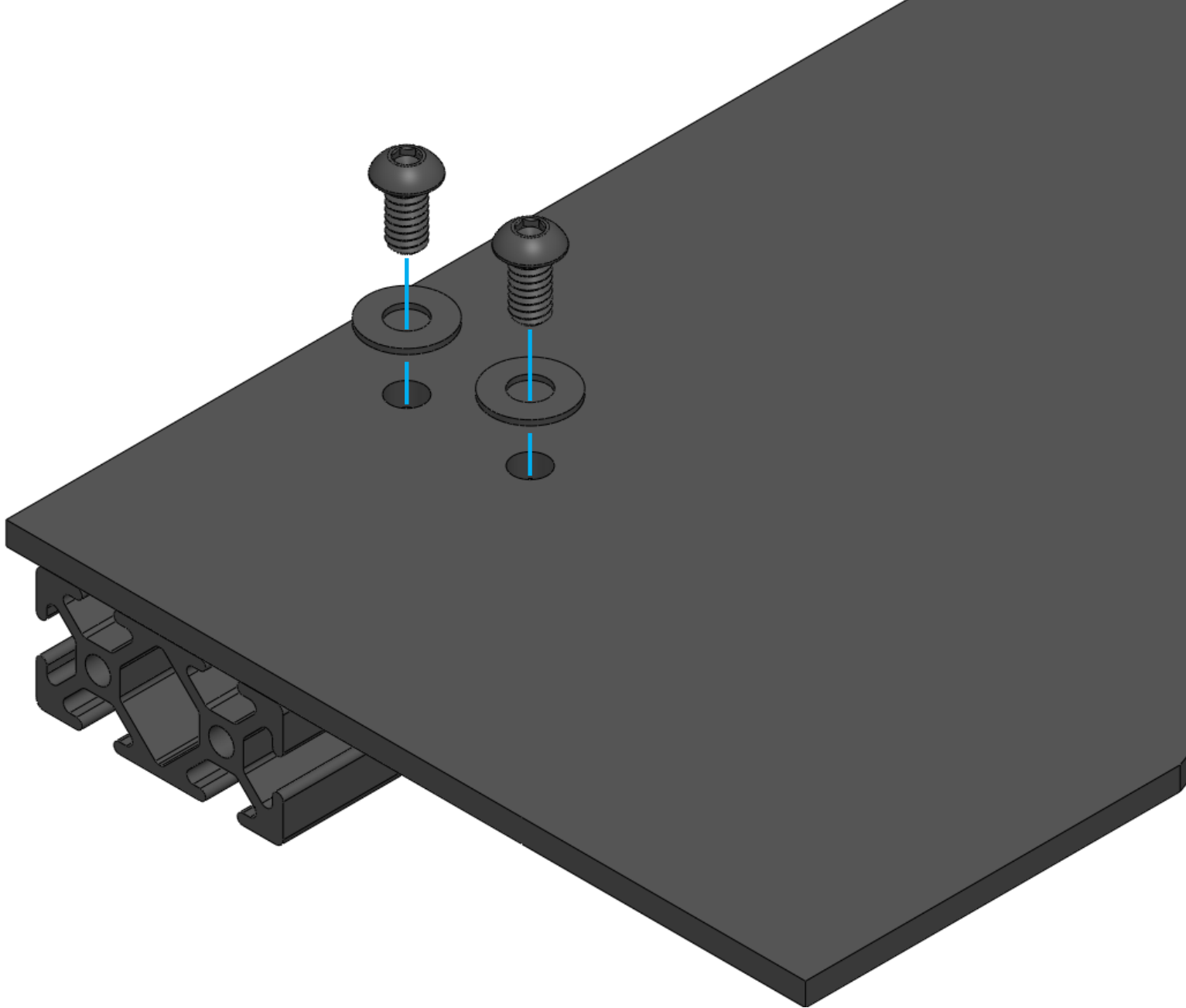
## USING TNUTS



Sideplates  
and mounts

Extrusion  
Crossbars

Wind Fairing  
w/ Edge Trim



## FAIRING ASSEMBLY

Required Components:

**6x** 1/4"-20 x 1/2"

**6x** 1/4" Flat Washers

**6x** Tnuts

Drop 6 tnuts into the slots on the cross member and line them up with the holes in the fairing. Secure with six 1/4"-20 x 1/2" socket button bolts and washers.

## ROOF DIAGRAM

Remove the plastic trim in the gutters of the roof by prying upwards with fingers or a non-marring tool. The Ford F250/F350/F450 Super Crew has several bolts and studs underneath this trim, some of which will be used for the installation of the rack. It is important not to remove any bolts that are not utilized by the rack to prevent leakage. The bolts that should be removed are marked by the **blue dots** in the diagram.

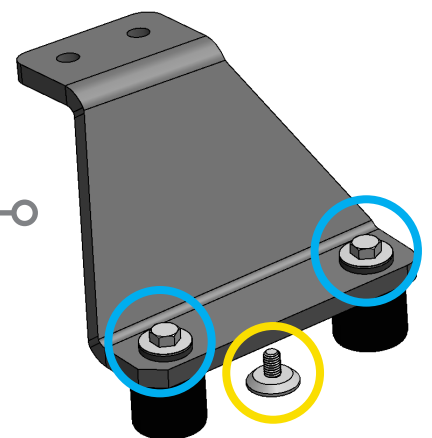
Locations marked in yellow are studs in the roof that should be ignored. The **red dots** are bolts that should not be removed.

 **MOUNTING BOLT**

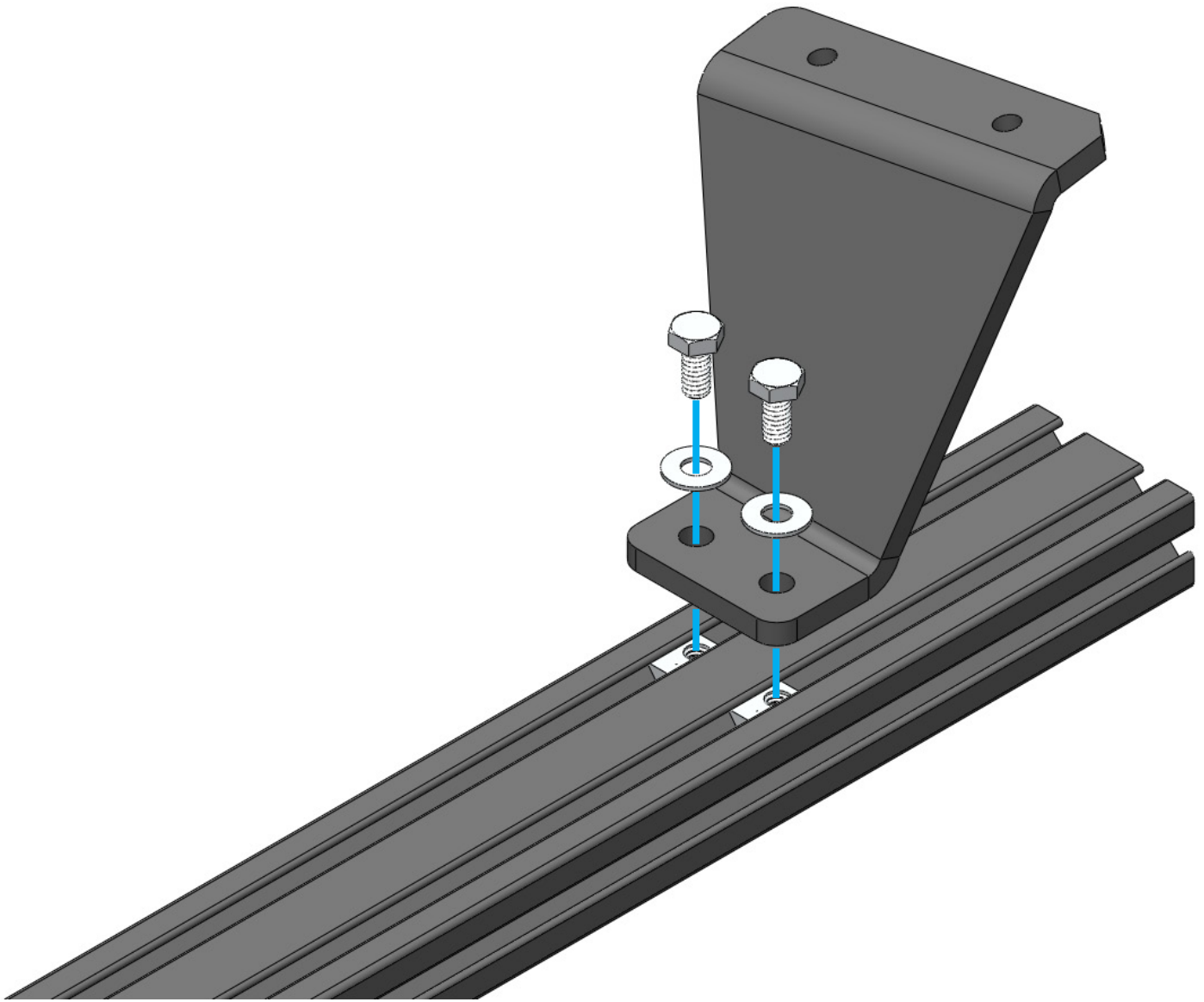
 **STUD**

 **FACTORY BOLT**

Notice that the front mounting location includes a stud. The hardware kit contains 4x round, single-bolt rubber spacers that allow the front mounting bracket to bridge over this stud.



The following steps will outline the proper installation of the mounting brackets.



## MOUNT ASSEMBLY 01

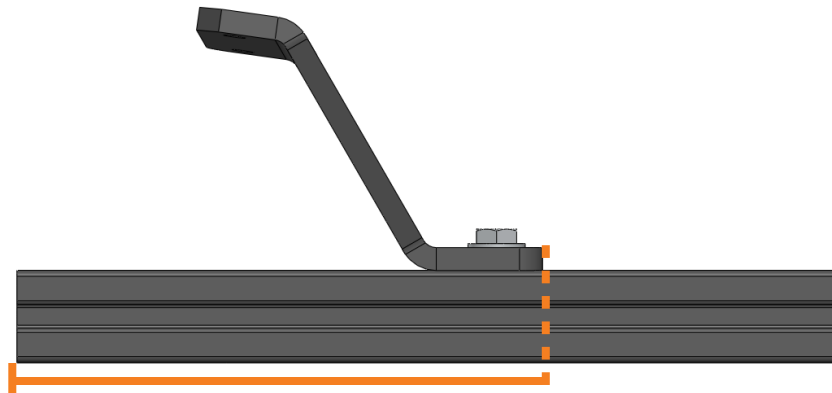
Required Components:

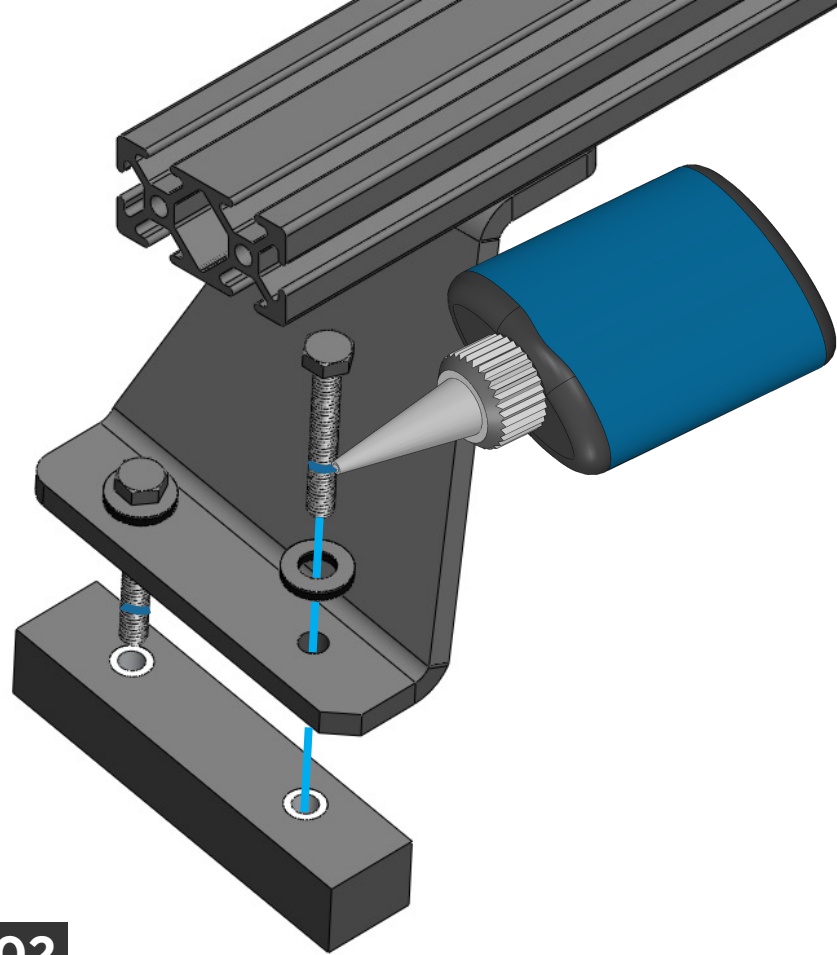
- 12x** 1/4"-20 x 9/16"
- 12x** 1/4" Flat Washers
- 12x** 1/4" Tnuts

Secure the tops of the mounting brackets to the wide faces of the cross members using the supplied T-nuts, 9/16" hex bolts, and flat washers.

Leave the hardware that attaches the mount to the crossbar loose. This will make it easier when placing the rack on the truck.

Later, the rack can be centered on the roof by measuring the **distance from the ends of the cross member to the inside-edge of the mounting brackets** on either side of the vehicle.





## MOUNT ASSEMBLY 02

### Required Components:

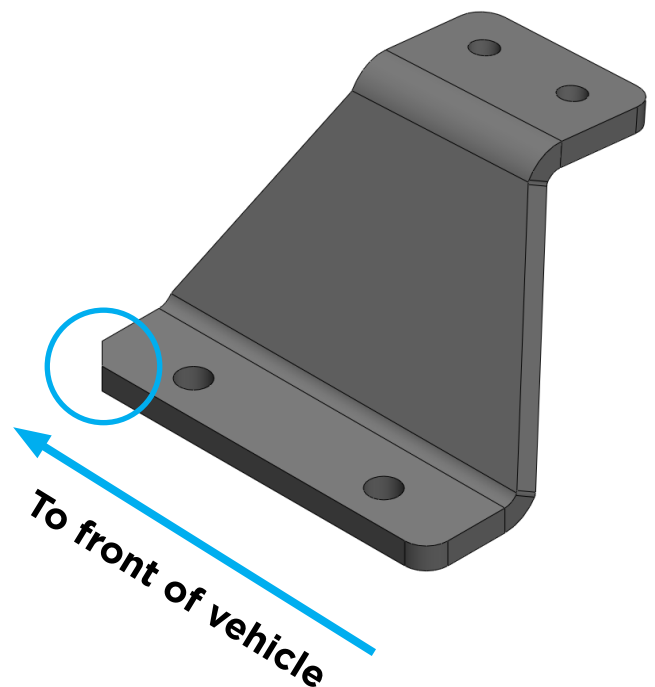
- 12x M5 X 40 Hex bolts
- 12x M5 Bonded washer
- 1x Bottle of threadlocker

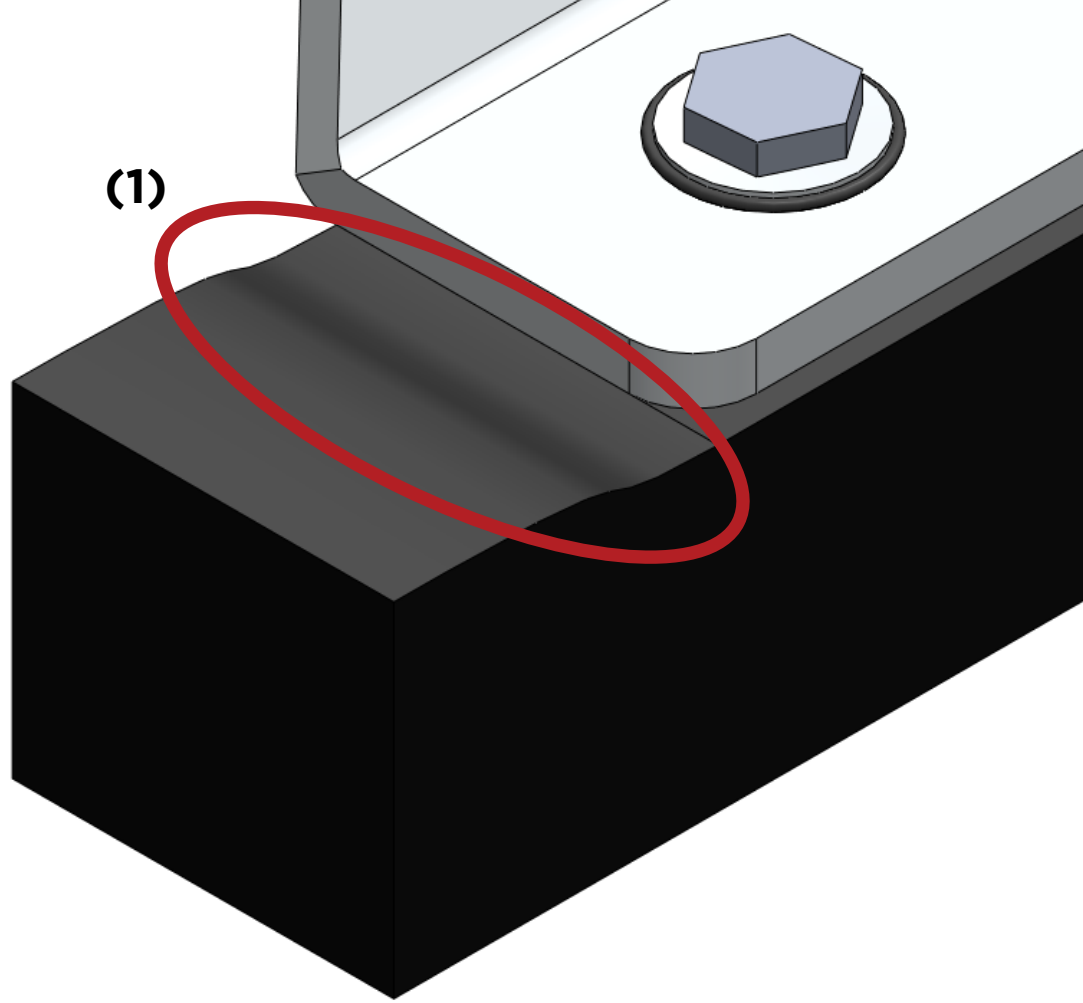
Slide the rubber spacers over the front, middle, and rear sets of factory holes in the roof - see diagram for specifics.

The sealant that Ford applies to the roof gutters can sometimes interfere with the fitment of the mounts. If the rubber portion of the mount assembly is unable to sit flat against the roof surface, **it will not create a proper seal**. Gently remove excess sealant with a hand tool.

Place the mounting brackets on top of the rubbers.

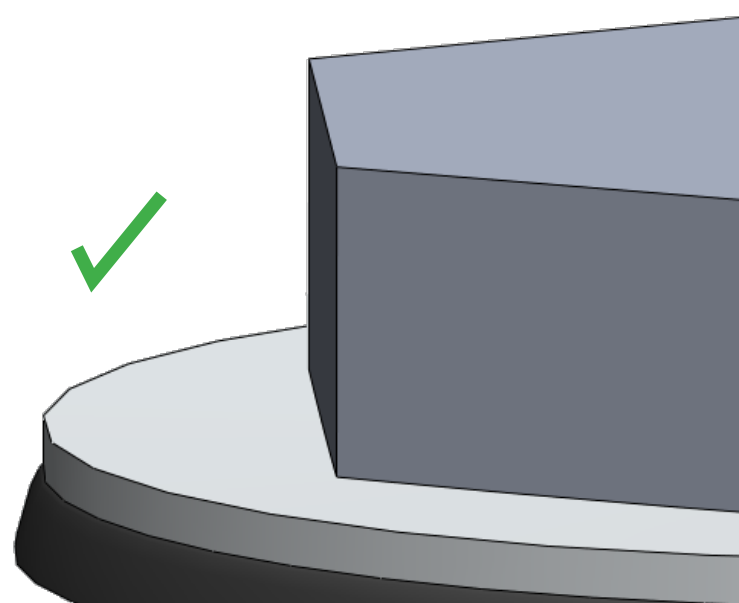
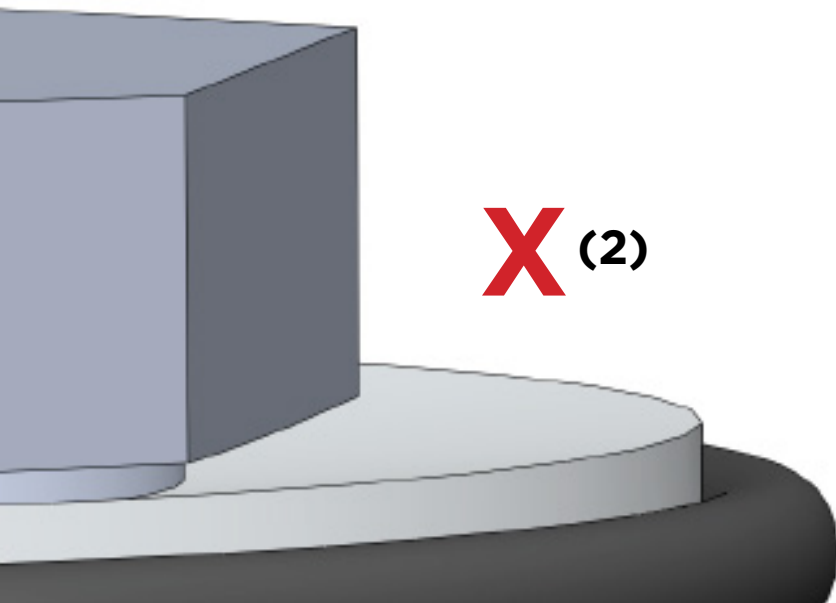
Slide the M5 bonded washers on to the M5x40 hex bolts. Apply a small drop of the supplied threadlocker to the threads of the M5x40 hex bolts before sliding them down through the holes in the mounting brackets, and into the factory threads in the roof.

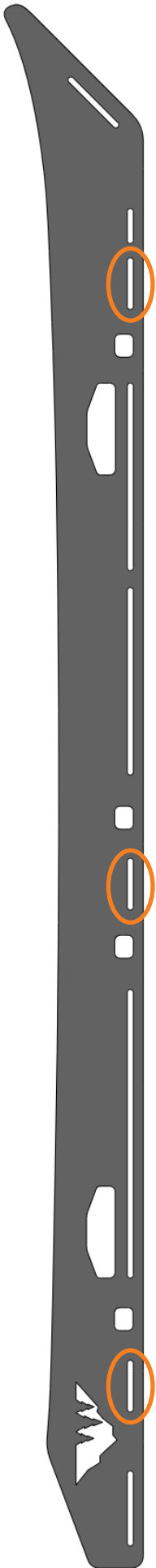




### MOUNT ASSEMBLY 03

Be careful not to overtighten the mounting brackets to the roof. A properly tightened mount will be rigid if pulled on, but the rubber spacer will not be visibly compressed (1). Likewise, the rubber portion of the bonded washer will not show excessive 'mushroom'-ing out from underneath the metal portion (2).





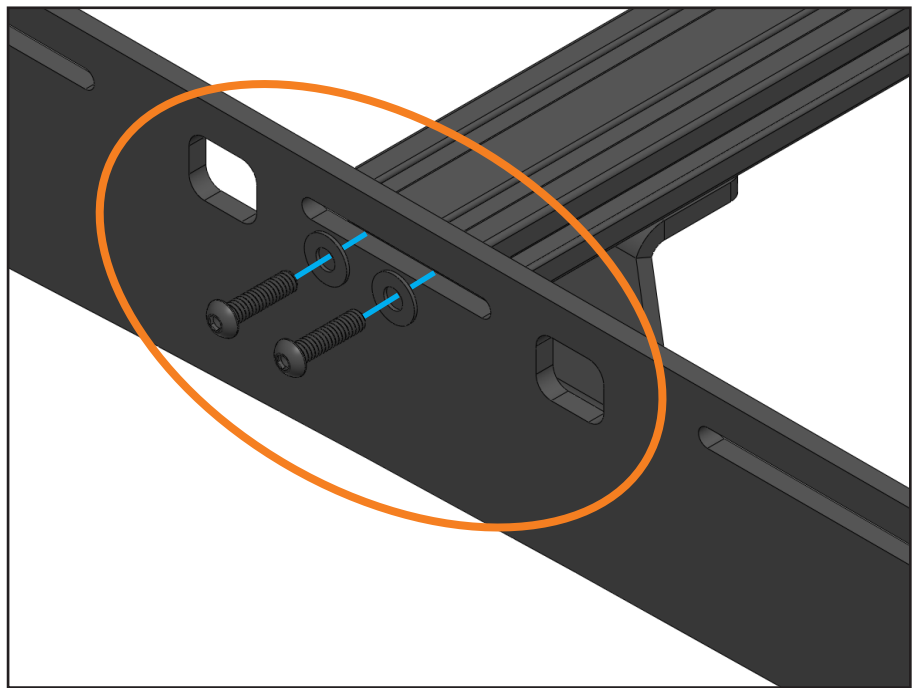
## SIDEPLATES

Required Components:

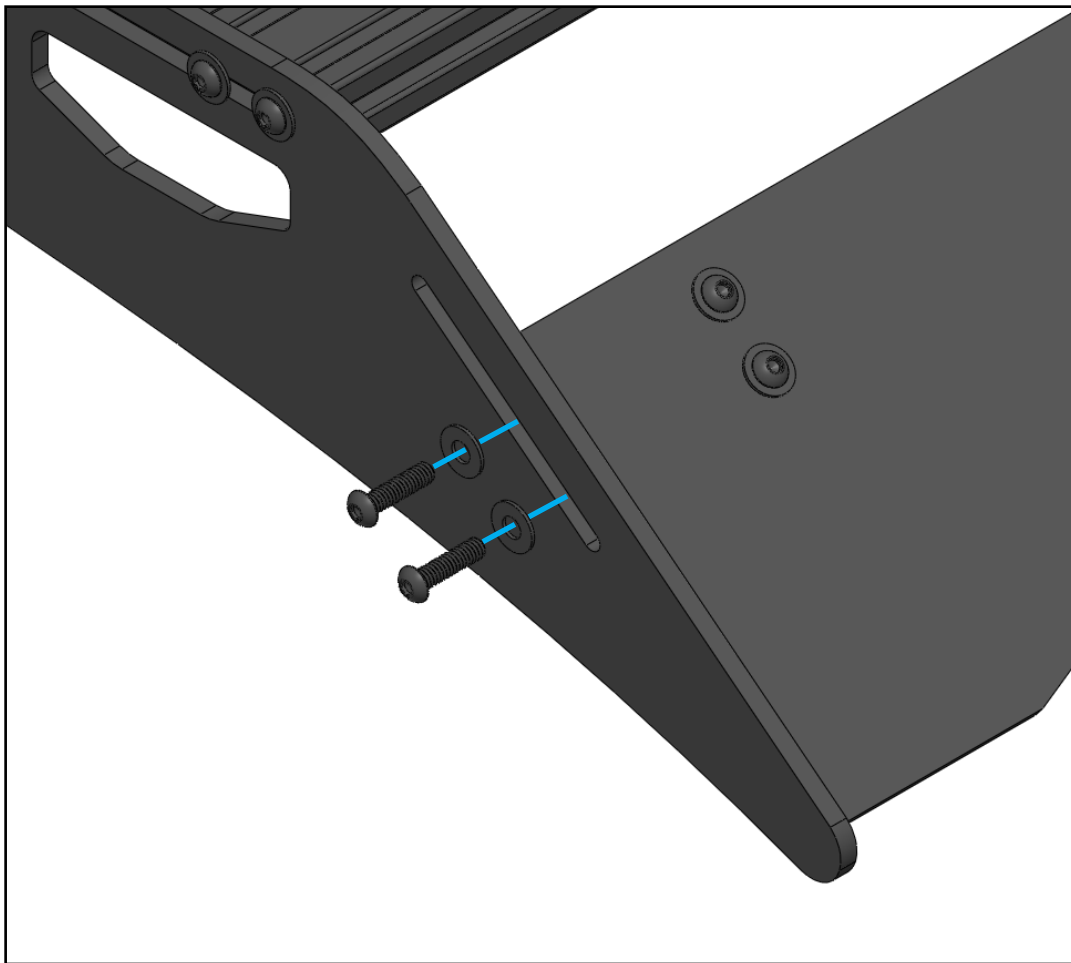
**12x** 1/4"-20 x 1" Socket Button

**12x** 1/4" Flat washer

Fasten the sideplates to the ends of the three mounting-foot cross members using the supplied 1" socket buttons and flat washers in the **designated mounting slots**. Refer to the next page for more details on which slots to use.







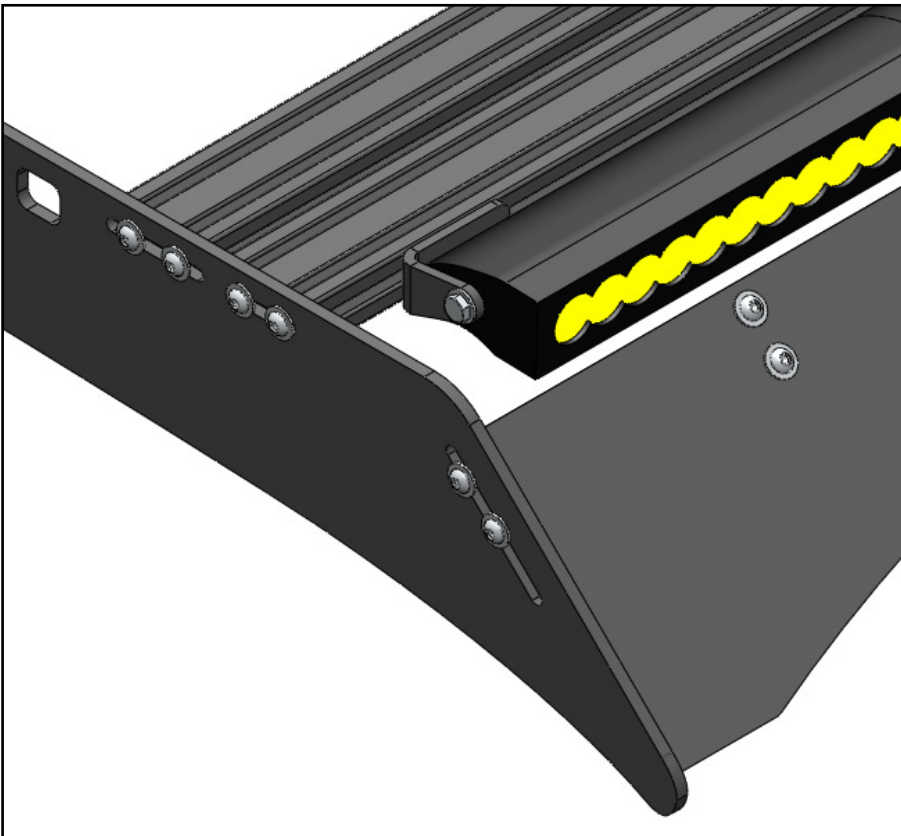
## WIND FAIRING

Required Components:

**4x** 1/4"-20 x 1" Socket button

**4x** 1/4" Flat Washers

Position the wind fairing in line with the diagonal slot at the front of the rack. Align the bottom of the fairing with the tip of the roof rack and secure it using four 1" socket buttons and washers. Note that the wind fairing is NOT intended to sit on the vehicle's roof - a small gap of 1/8" - 1/4" is ideal.



## CROSS MEMBERS

Required Components:

**16x** 1/4"-20 x 1" Socket buttons

**16x** 1/4" Flat washers

**4x** 56" Cross members

Secure all of the remaining cross members to the rack system using the 1" socket buttons and washers in the open slots in the sideplate. Position according to your load requirements. Note which cross members have mounting brackets attached to them in these diagrams.

For half-fairing applications, an additional slot has been added between the front-mounting-bracket cross member and the wind fairing to accommodate a cross member for the lightbar and corresponding Sherpa lightbar brackets.

# EXPLORE.



All products built and designed by Sherpa Equipment Company are intended for off-road use and should be assembled, installed, and used according to Sherpa Equipment Company's recommendations. Sherpa Equipment Companies products should be used safely with good judgment towards others and surroundings.

By installing Sherpa Equipment Companies products on your vehicle you assume all liability. Sherpa Equipment Company will not be held liable for damages or loss associated with the installation or use of its products. It is recommended that you inspect your roof rack within the first 100 miles of installation and every 500 miles after.