



# MID - HEIGHT BED RACK (CLAMP STYLE)

I N S T A L L I N S T R U C T I O N S

# HARDWARE CHECKLIST

Quantities marked in blue may be used in the preassembly of front adjustable mounts.  
Exact hardware color counts may vary based on the options selected at checkout.

**8**

Hex bolt  
(3/8"-16 x 1.5")



**40**

Carriage bolt  
(5/16"-18 x 1")



**2**

Carriage bolt  
(1/4"-20 x 1")



**40**

Nylock nut  
(5/16"-18)



**2**

Nylock nut  
(1/4"-20)



**8**

3/8"  
Flat washer



**40**

5/16"  
Flat washer



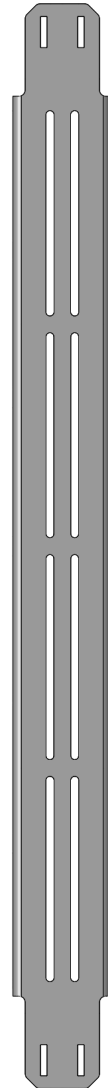
**2**

1/4"  
Flat washer



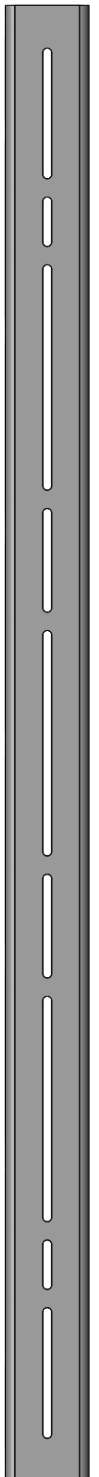
**2**

ACCESSORY  
BRACES



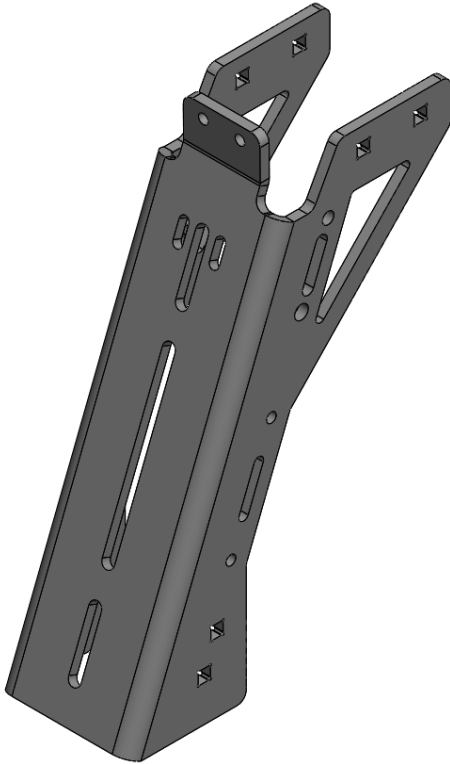
**2**

CROSSBARS



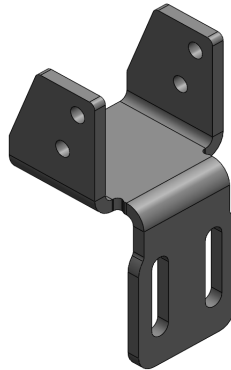
**4**

MID-HEIGHT  
TOWERS



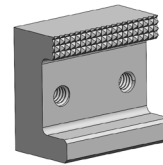
**4**

CHAIR  
BRACKETS



**4**

C-CLAMPS



The below assembly images may differ slightly in appearance from actual product.

## 01

Required Components:

**4x** Mid-height towers

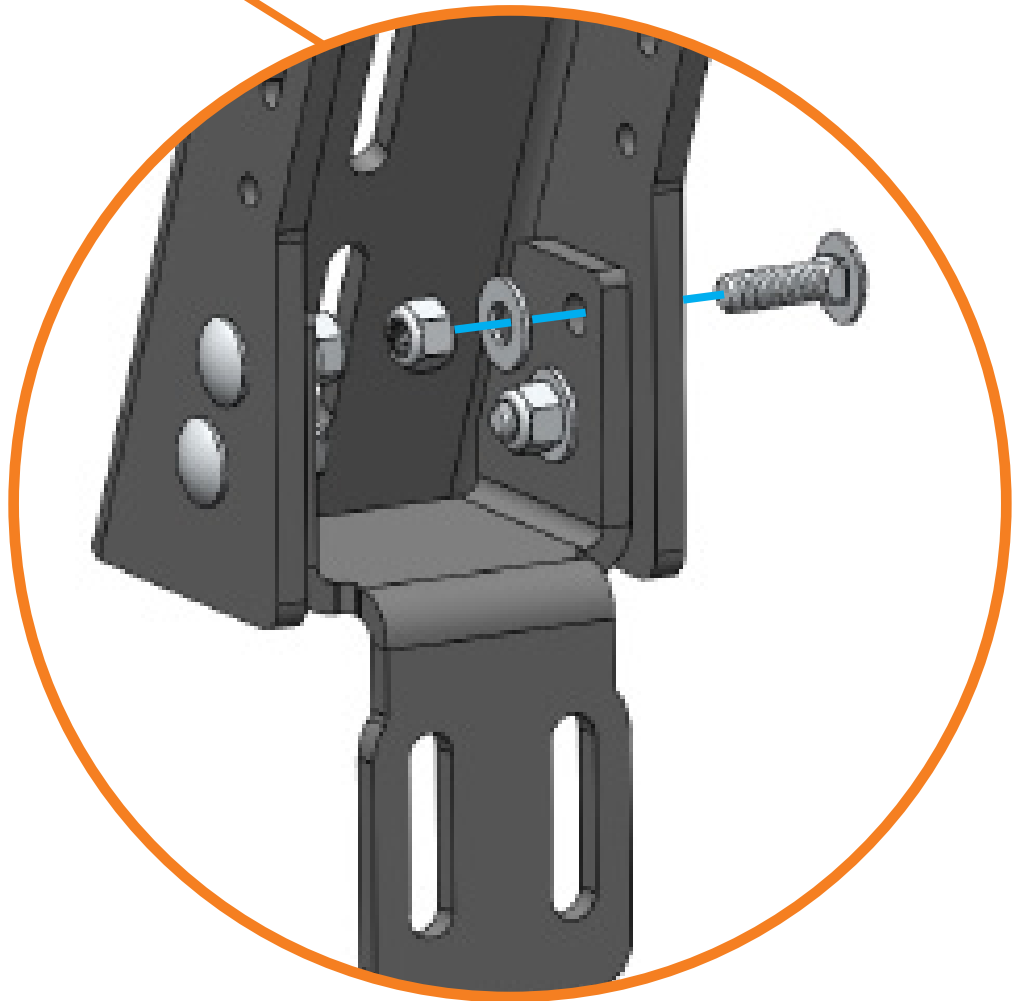
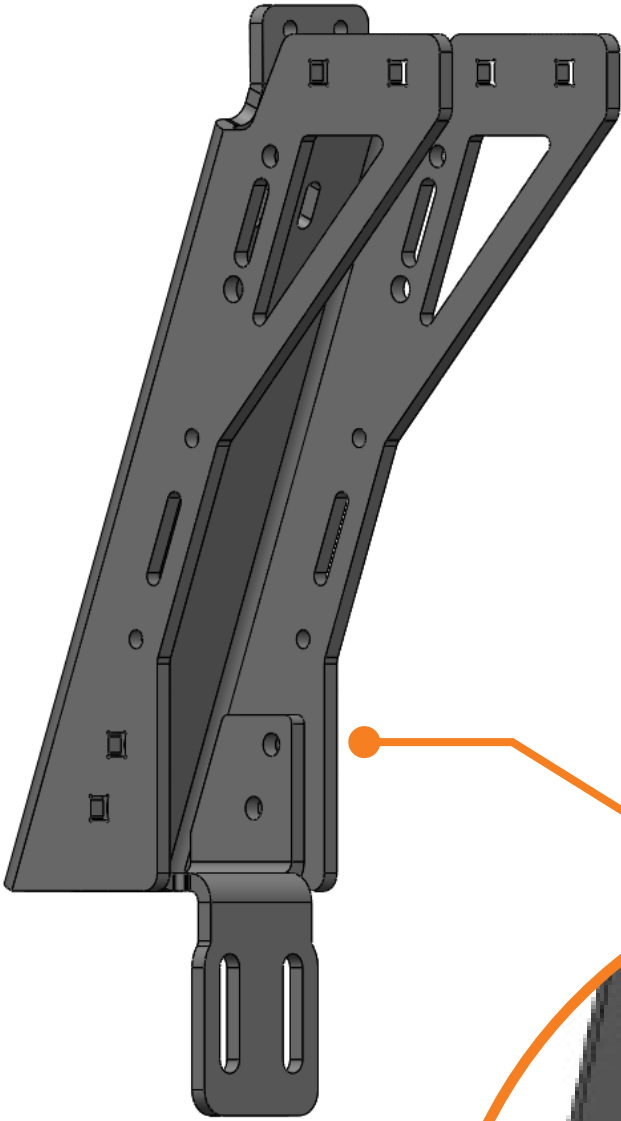
**4x** Chair brackets

**16x** 5/16"-18 Carriage Bolt

**16x** 5/16" Washer

**16x** 5/16"-18 Nut

Loosely fasten each chair bracket to a tower using the supplied carriage bolts, washers, and nylock nuts. Leave the hardware loose enough for the chair brackets to move.



**x4**



## 02 - Crossbar

Required Components:

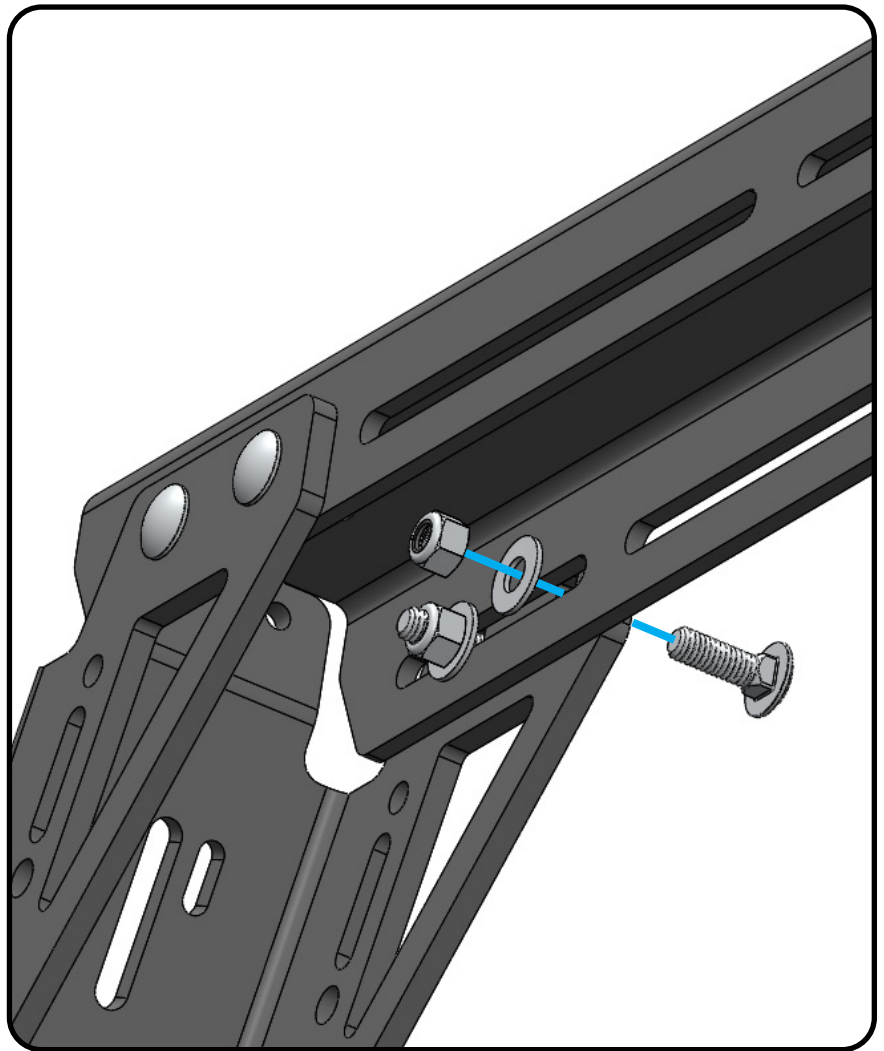
**16x 5/16"-18 Carriage bolt**

**16x 5/16"-18 Nylock nut**

**16x 5/16" Flat washer**

Insert a crossbar between the towers and center it by lining up the ends of the bar with the upward-facing flanges of the towers. Fasten with the supplied carriage bolts, washers, and nylock nuts.

Repeat this for the second set of crossbar and towers.



## 03 - Front Tower

Required Components:

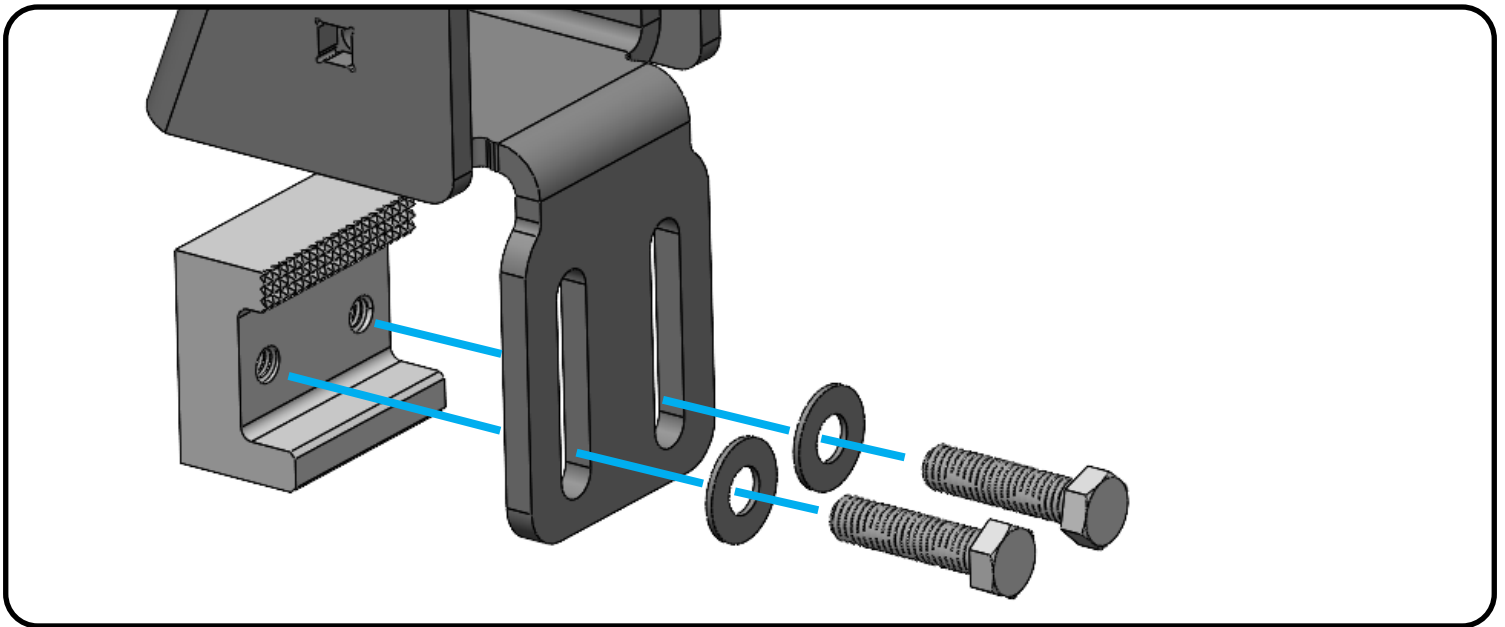
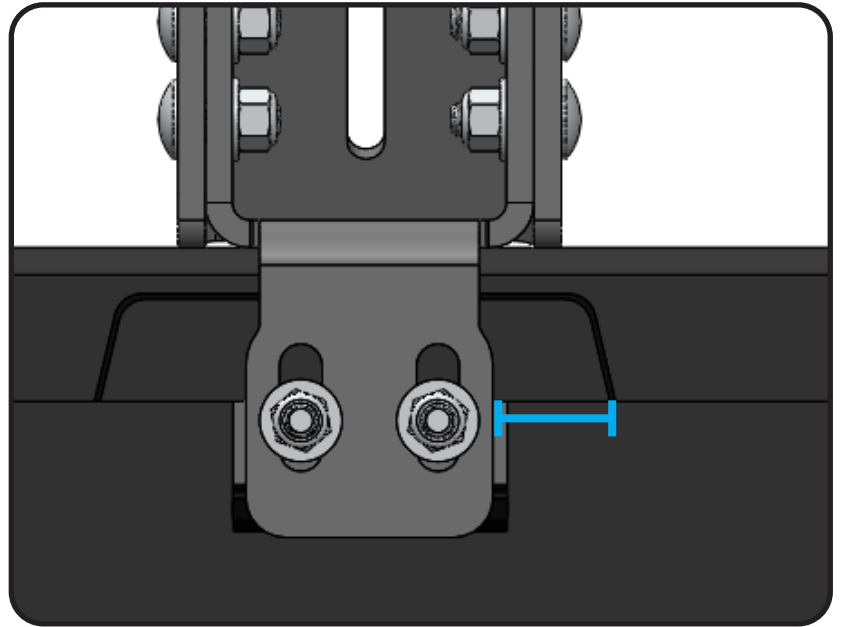
2x C-clamp

4x 3/8"-16 x 1.5" bolt

4x 3/8" Flat washer

Clamp a tower assembly to the bedside using the supplied bolts, washers, and C-clamps. Notice the orientation of the C-clamp.

The chair brackets should be 1¼" back from the front edge of the trapezoidal cutout in the bed plastic.



## 04 - Rear Tower

Required Components:

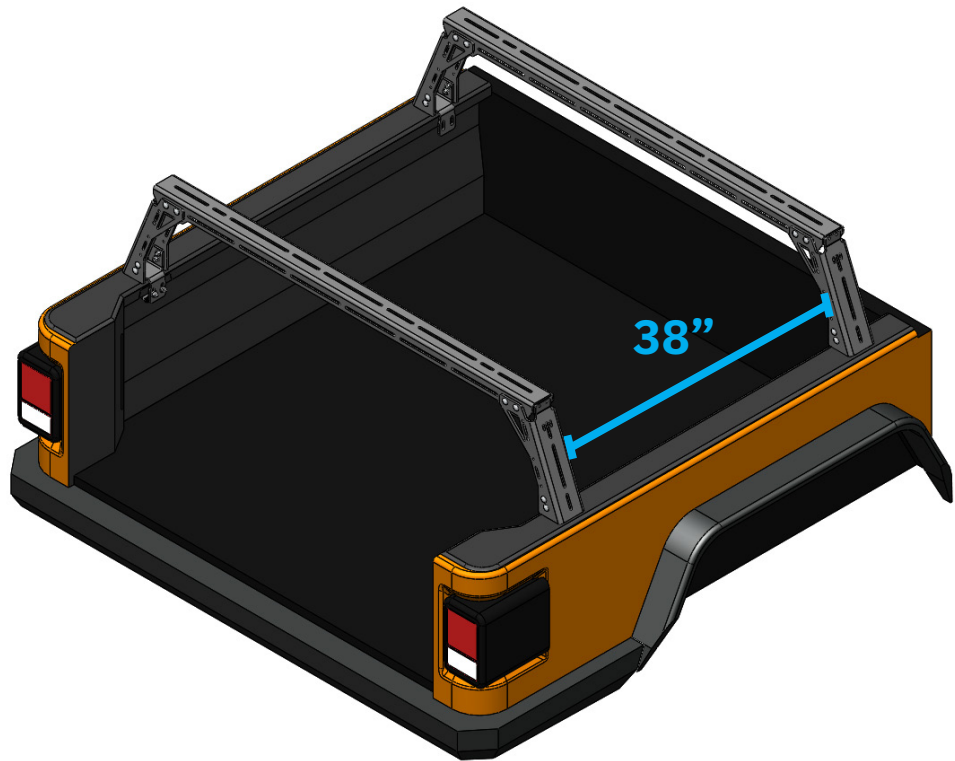
2x C-clamp

4x 3/8"-16 x 1.5" bolt

4x 3/8" Flat washer

Fasten the second tower assembly approx. 38" forward from the rear tower, measured from the inside faces of each tower.

With all towers attached, check that the C-clamps are making contact with the face of each chair bracket. Loosen and move the clamp upwards if they are not.



## 05 - Accessory Plate

Required Components:

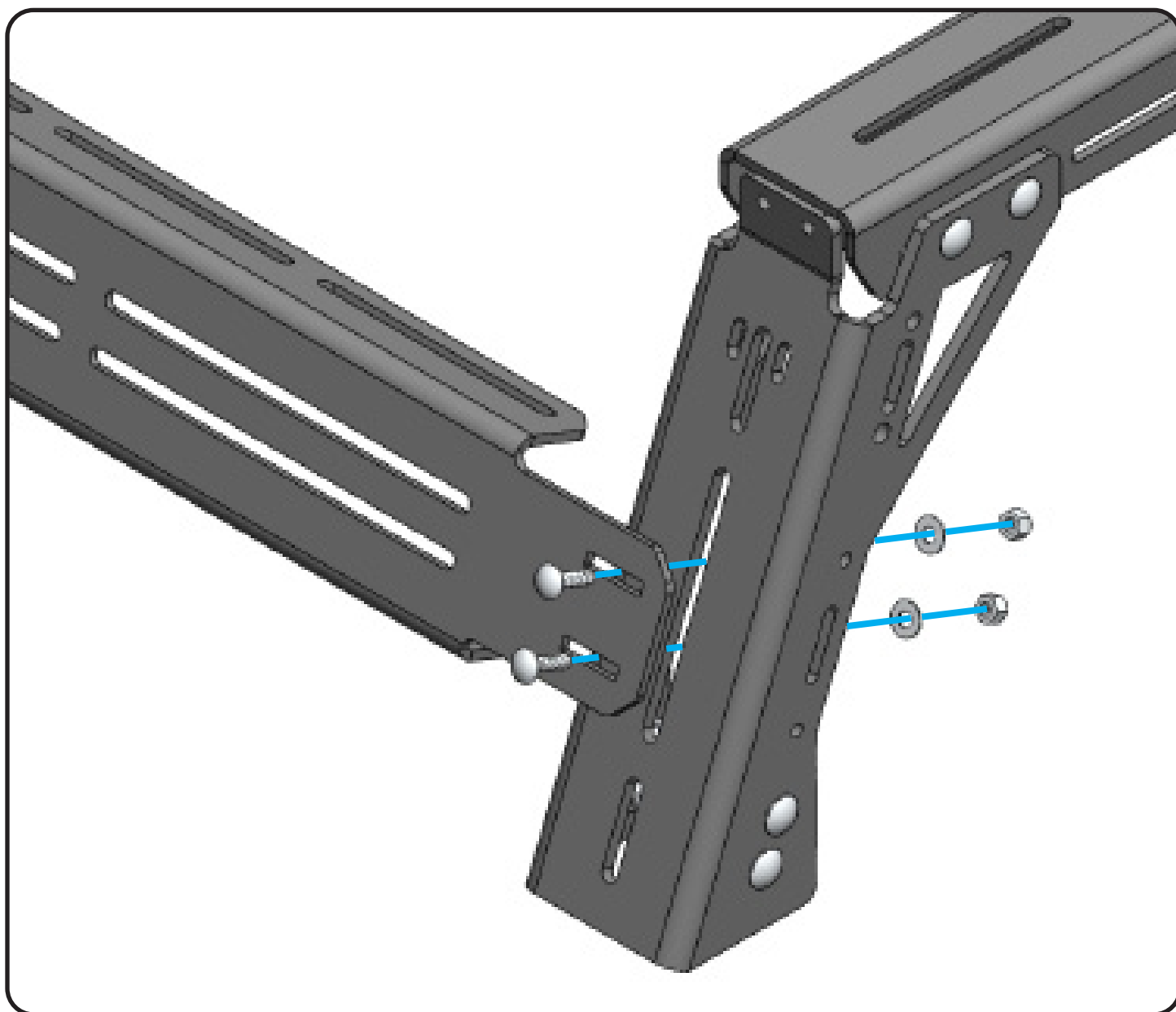
**8x 5/16"**-18 Carriage bolt

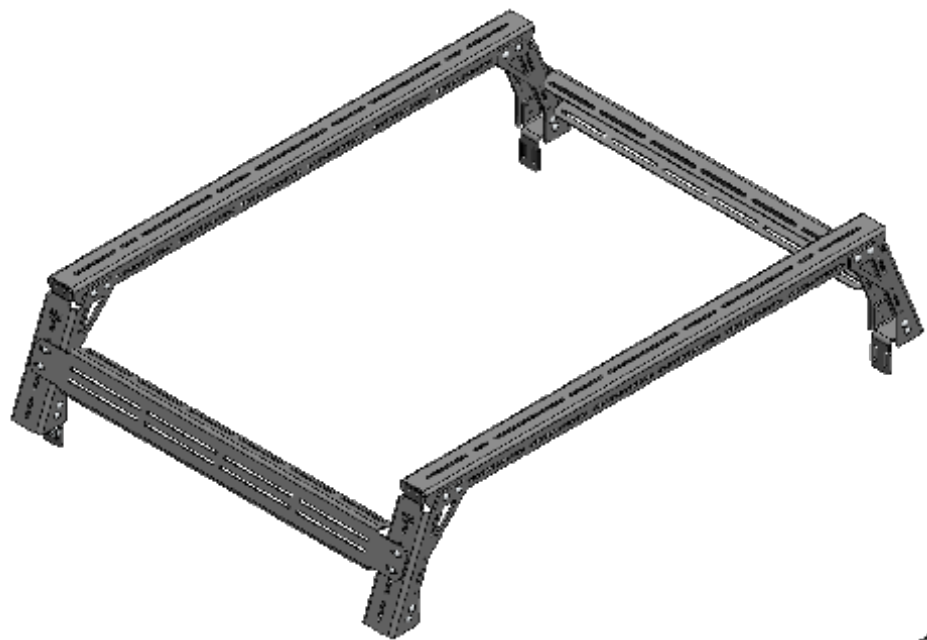
**8x 5/16"**-18 Nylock nut

**8x 5/16"** Flat washer

Install the accessory braces along the length of the bed rack assembly using the supplied carriage bolts, washers, and nylock nuts.

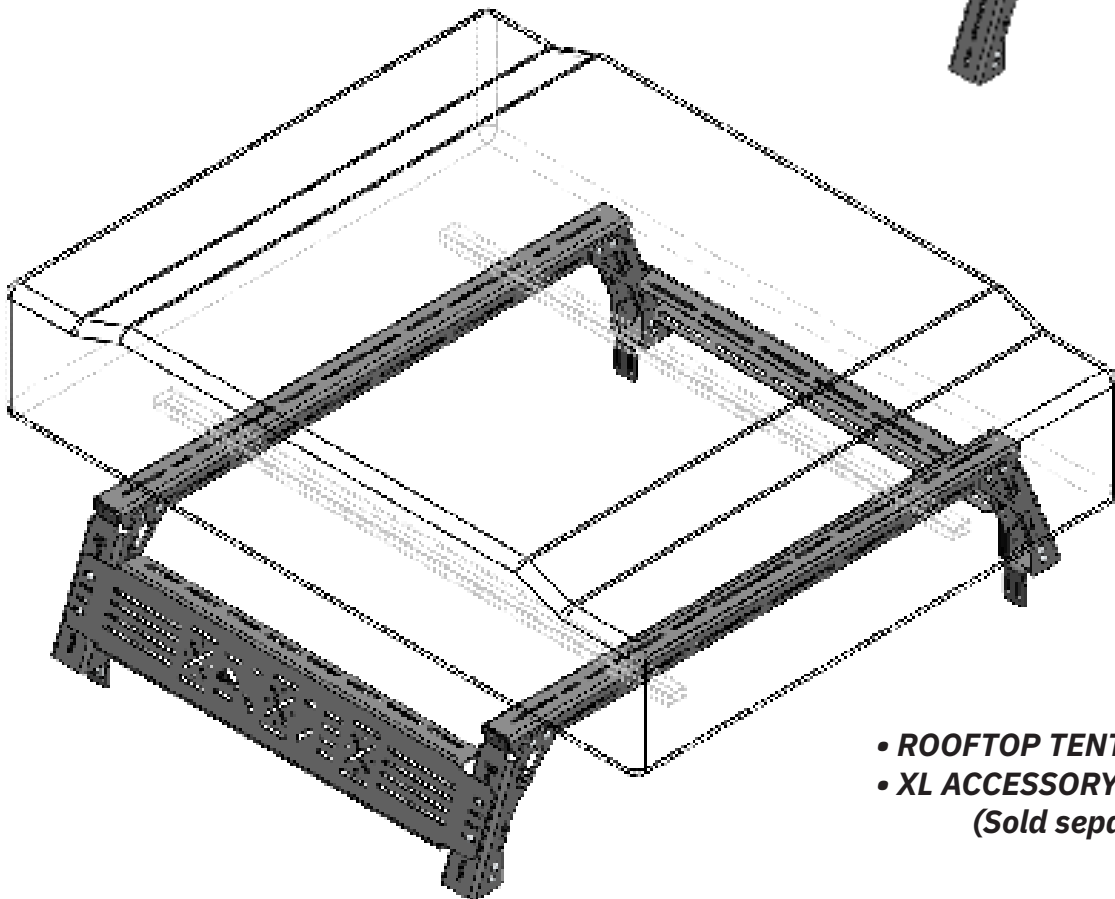
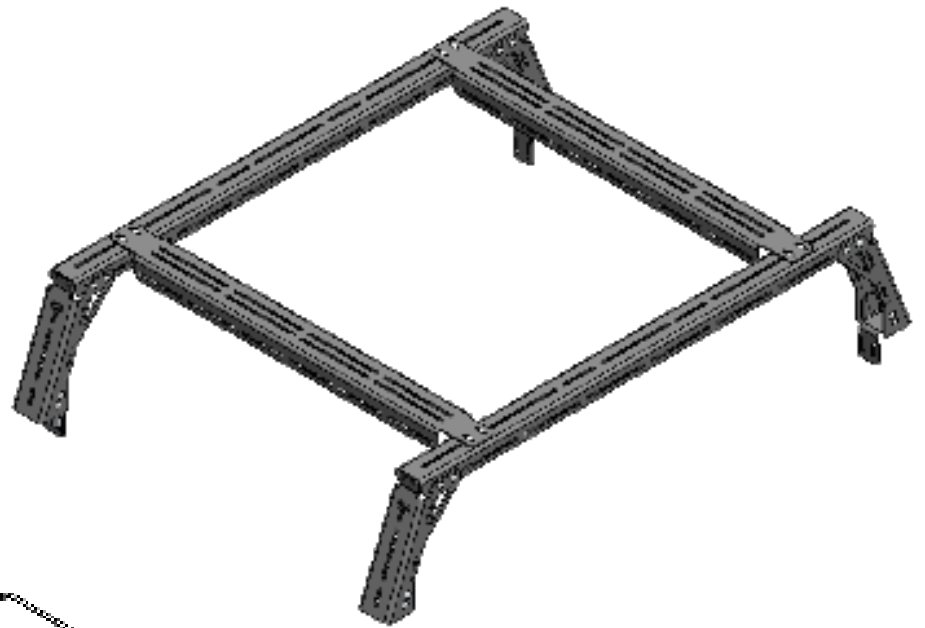
These can be added to the sides of the towers or on top of the crossbars. Example configurations are supplied on the next page.





***SIDE***

***TOP***



- ***ROOFTOP TENT***
- ***XL ACCESSORY PANEL***  
*(Sold separately)*





**EXPLORE.**

All products built and designed by Sherpa Equipment Company are intended for off-road use and should be assembled, installed, and used according to Sherpa Equipment Company's recommendations. Sherpa Equipment Companies products should be used safely with good judgment towards others and surroundings.

By installing Sherpa Equipment Companies products on your vehicle you assume all liability. Sherpa Equipment Company will not be held liable for damages or loss associated with the installation or use of its products. It is recommended that you inspect your roof rack within the first 100 miles of installation and every 500 miles after.