



TENT RISERS

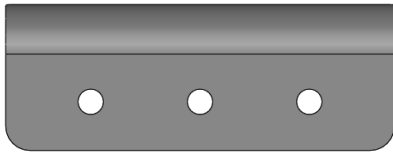
I N S T A L L I N S T R U C T I O N S

HARDWARE CHECKLIST

Exact hardware color counts may vary based on the options selected at checkout.

8

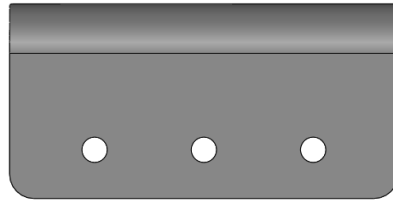
Tent Riser
Short



OR

8

Tent Riser
Tall



24

1/4"-20
(9/16")



24

1/4"-20 Tnut



24

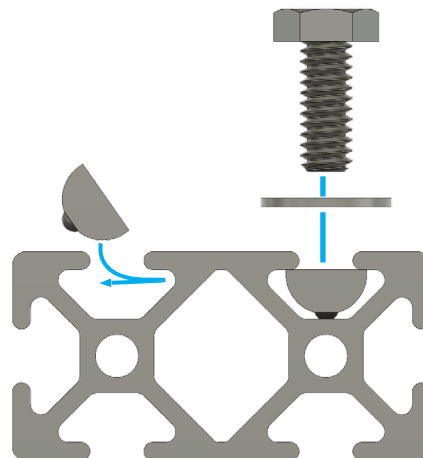
1/4" Washer



BEFORE YOU BEGIN

Installing a tent can be difficult alone. Getting another person to lend a hand on the install can make the process a lot easier. The process outlined in these instructions is what we find to be the most consistent and straightforward method.

USING TNUTS



Setup

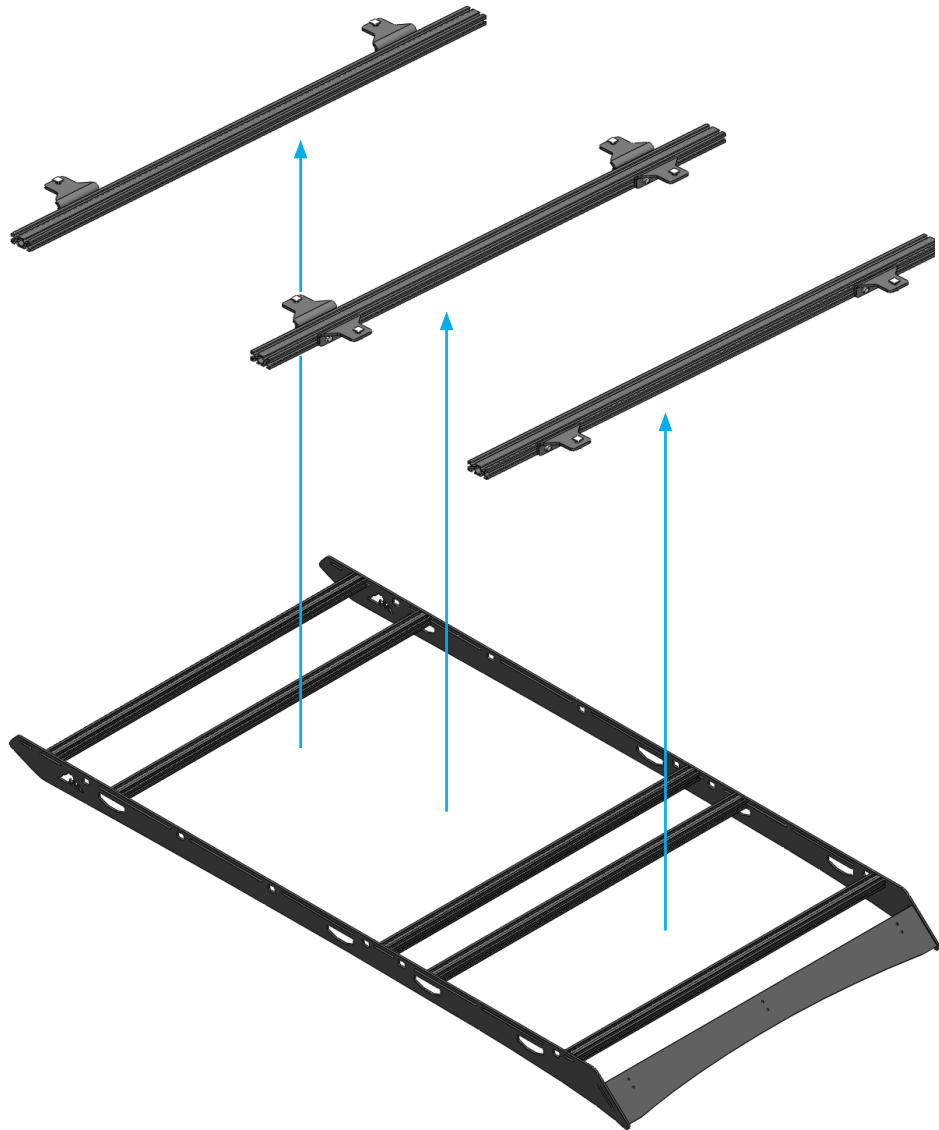
Maximizing the number of cross members that the tent mounts are spread across can distribute the load of the tent. The mounts should be mounted across a minimum of three crossbars, as pictured. Using four cross members is even better (and recommended). This number is usually only limited if there are other cross members on the rack that are already dedicated to something else, such as a lightbar.

For lighter tents, such as soft tents, two crossbars can be sufficient, but using more is preferred.

Install 01

Determine the amount of cross members you are able to use and remove them from the slots of your sideplates. Note that if the cross member has mounting feet attached to it, it is rigid and should not be removed. These cross members can be used, but is not recommended.

Removing these cross members will make the install easier. Attaching the cross members to the tent off of the vehicle first is easier than trying to mount the tent to the cross members while on the roof of the vehicle.

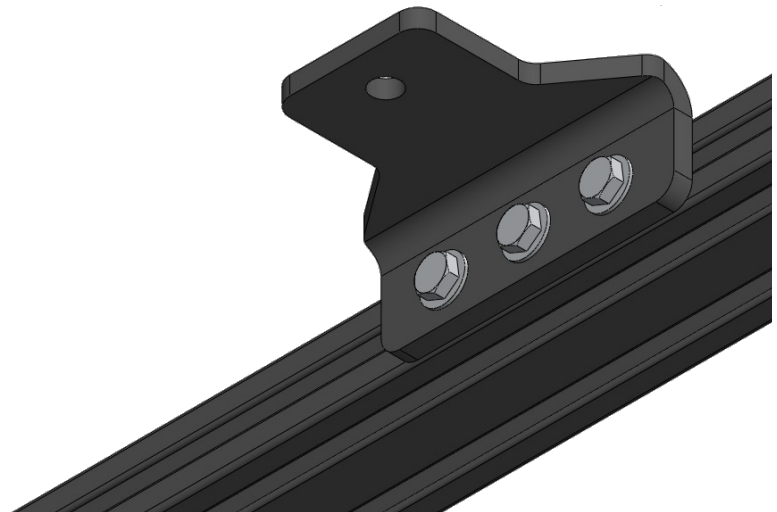
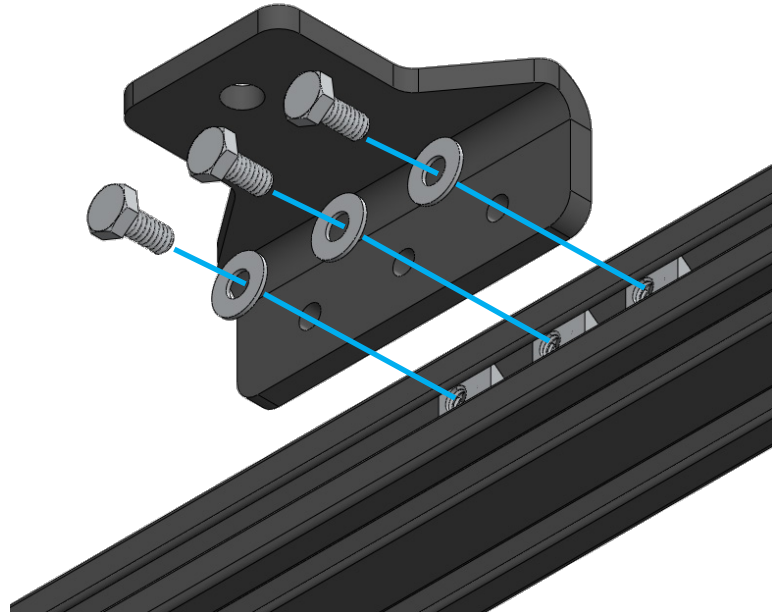


Install 02

Required Components:

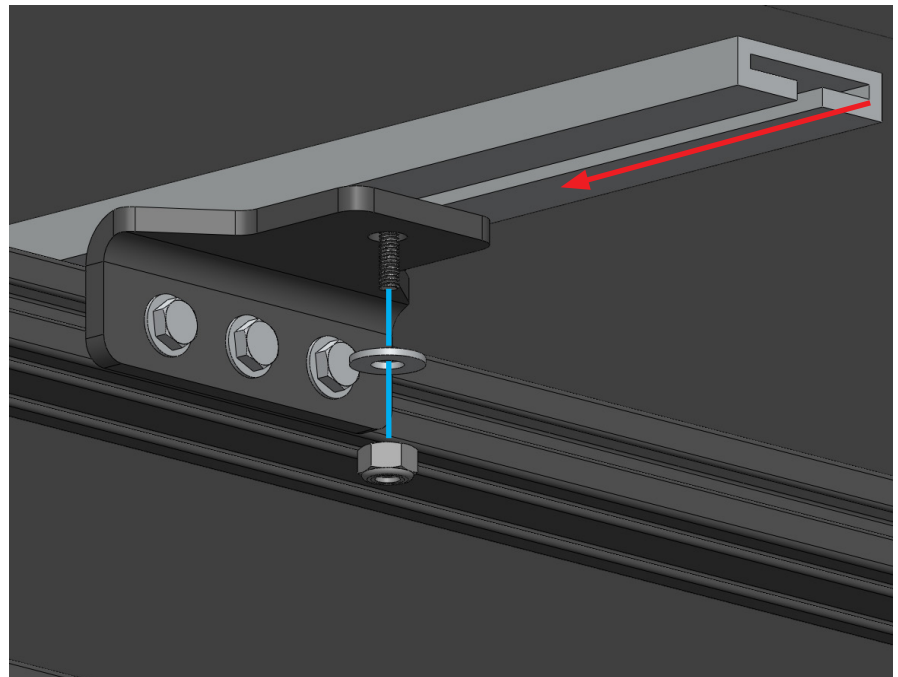
- 8 Sherpa Tent Riser
- 24 1/4"- 20 x 9/16" bolt
- 24 1/4"- 20 Tnut
- 24 1/4" Flat washer

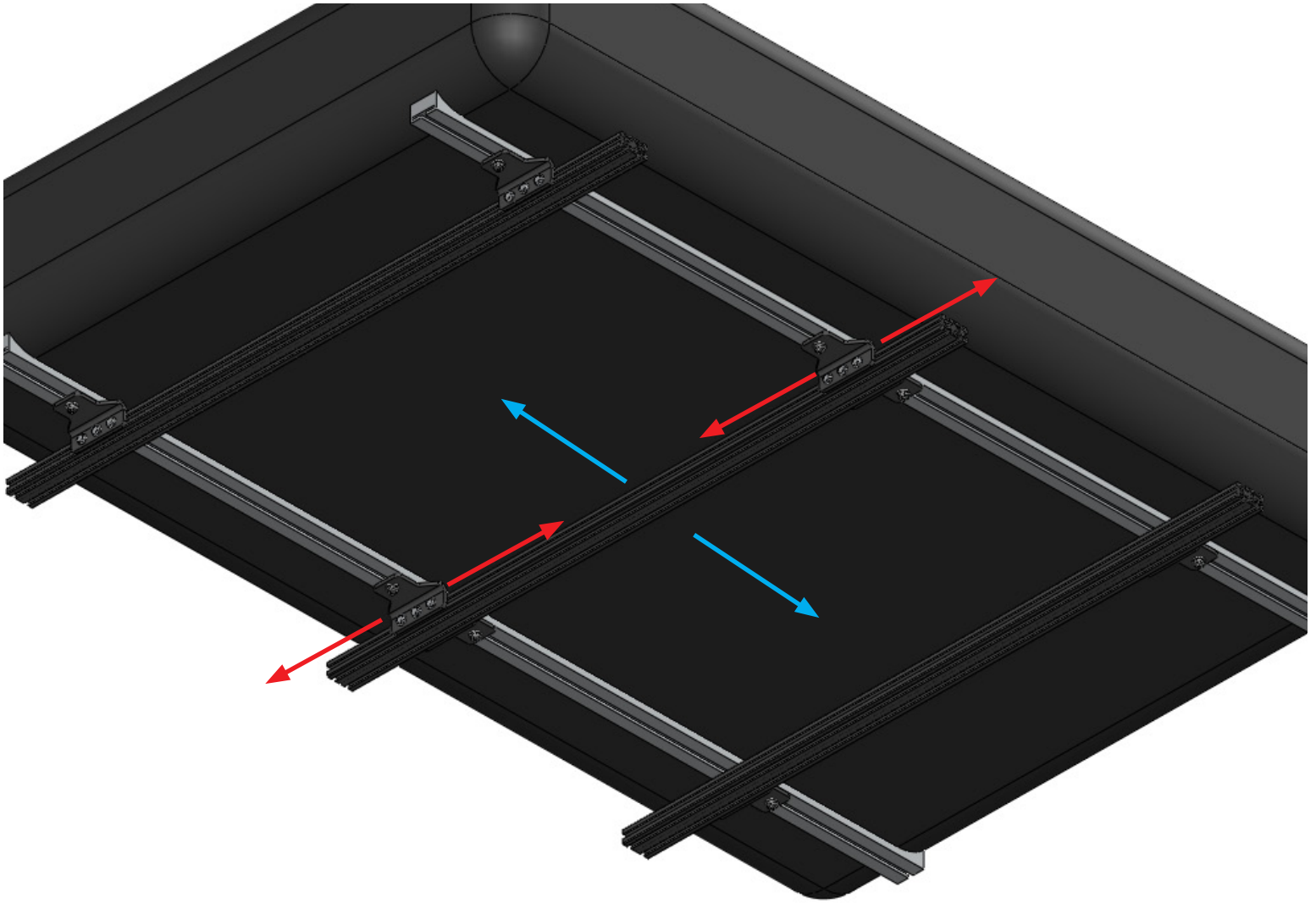
Insert three Tnuts into the side slot of a cross member. Secure the tent riser with the 9/16" bolt and washers, leaving it loose enough so that it can be slid along the length of the cross member. Do this for each of the eight mounts.



Install 03

With the tent and cross members on the ground or workspace (not the roof of the vehicle), **slide** the tent-manufacturer's supplied track nuts/bolts into the track on the bottom of the tent. Insert the end of the bolt through the top hole of the Sherpa Tent Riser and **secure** the tent to the riser using the washer and nut supplied by the tent manufacturer.

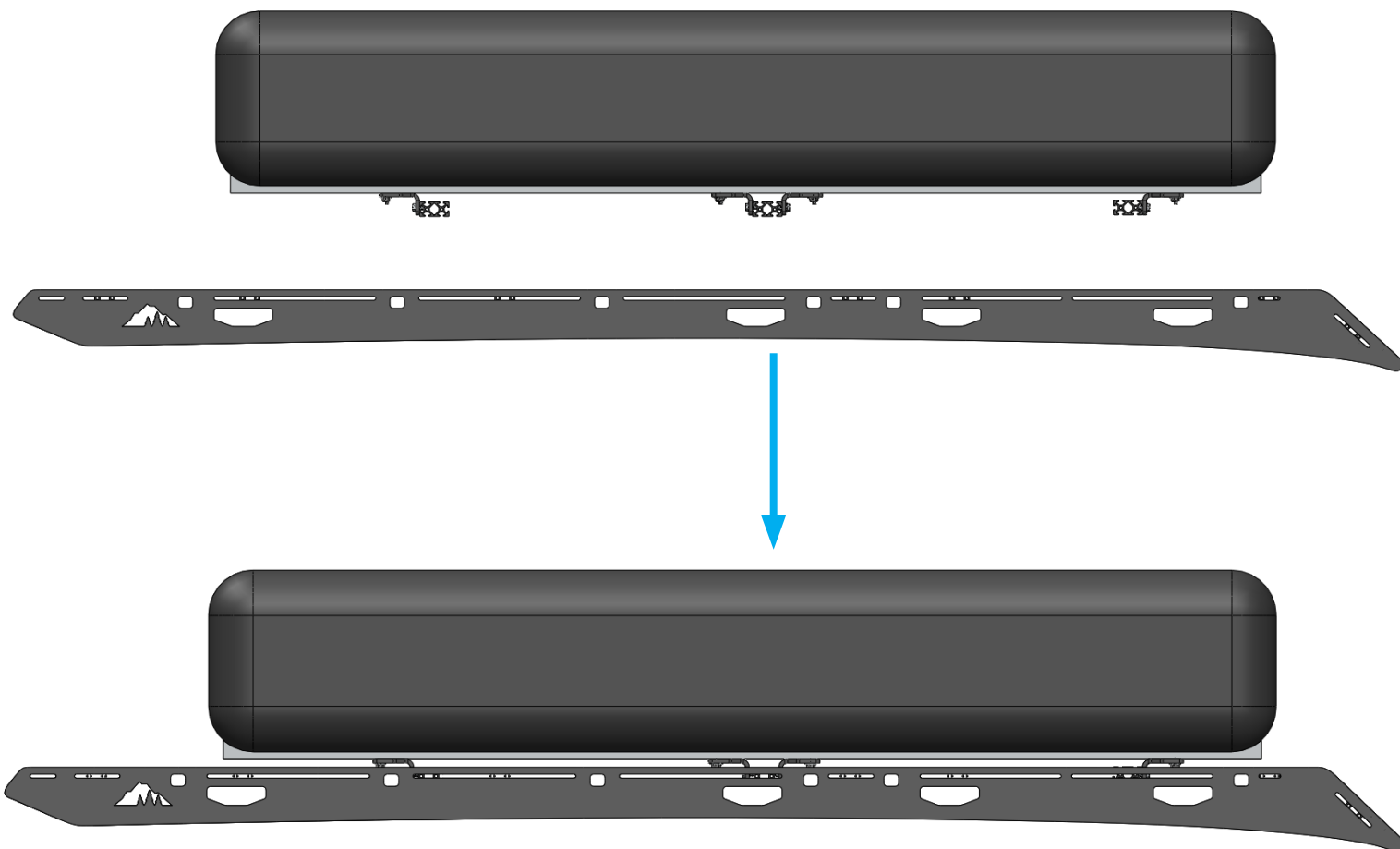




Install 04

Repeat install step 03 for all eight mounts. Pictured above is the minimum recommended cross member quantity of three, but utilizing four cross members (by moving the second pair of risers from the middle cross member to a second) is encouraged.

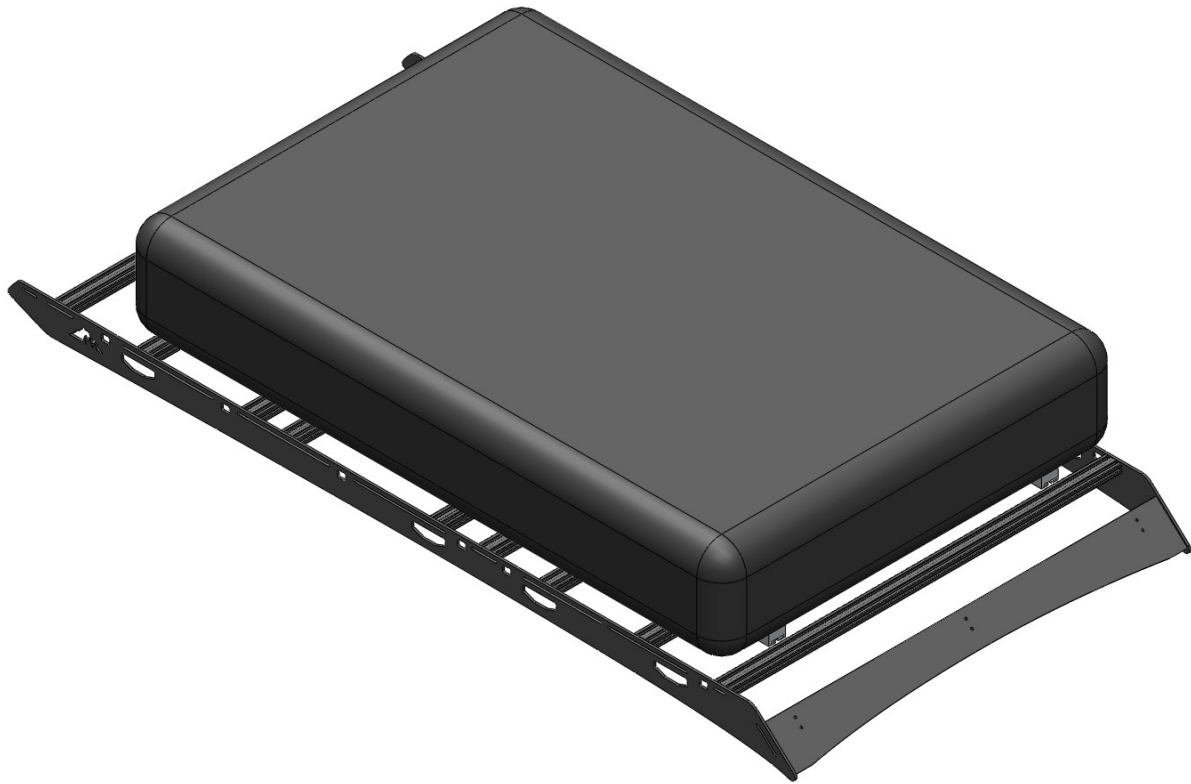
Position the **cross members** along the length of the tent in a similar configuration to how they came off of the roof rack. Likewise, adjust the position of the **risers** along the length of the cross members to center the tent (or slightly offset if required by your specific application). It is important that the cross members are all in-line with each other, otherwise they will not slot back into the roof rack.



Install 05

Lower the assembly down onto the rack. The cross members remaining on the roof rack should sit between the cross members installed on the tent, and will prevent the tent from dropping down too far and touching the roof. Centering the tent in install step 04 will ensure that all of the cross members will fit between the inside faces of the sideplates. If one is sticking out too far to one side (driver vs passenger side), remove the assembly and readjust.

Once in place, insert the 1/4"-20 socket buttons and washers back into the cross members that were removed and attached to the tent. You will need to lift up on the tent slightly in order to get the slot lined back up with the threads in the cross member. Ensure all hardware is tight and the tent is located in the desired location on the rack.



EXPLORE.

All products built and designed by Sherpa Equipment Company are intended for off-road use and should be assembled, installed, and used according to Sherpa Equipment Company's recommendations. Sherpa Equipment Companies products should be used safely with good judgment towards others and surroundings.

By installing Sherpa Equipment Companies products on your vehicle you assume all liability. Sherpa Equipment Company will not be held liable for damages or loss associated with the installation or use of its products. It is recommended that you inspect your roof rack within the first 100 miles of installation and every 500 miles after.