



MATTERHORN MKII.

I N S T A L L I N S T R U C T I O N S

HARDWARE CHECKLIST

Exact hardware color counts may vary based on the options selected at checkout.

36

1/4"-20
(1")



4

Carriage bolt
(1/4"-20 x1")



8

M6-1.00
(16mm)



12

1/4"-20
(5/8")



6

1/4"-20
(1/2")



18

1/4" Tnut



4

1/4" Nylock
Nut



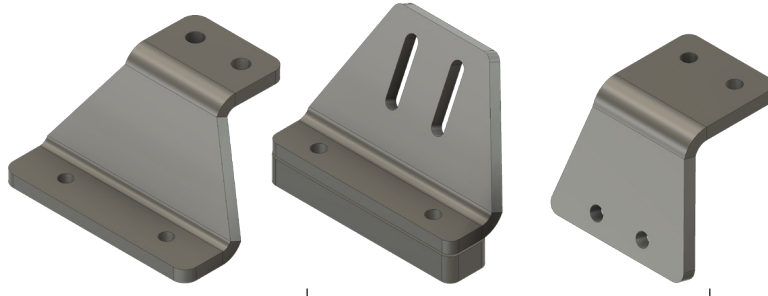
62

1/4" Flat
Washer



8

M6 Flat
Washer



4

REAR
MOUNTING
BRACKETS

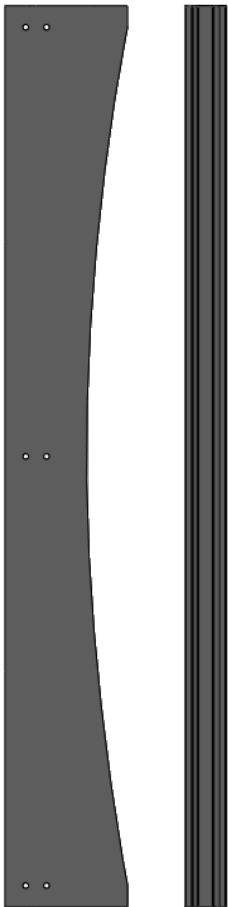
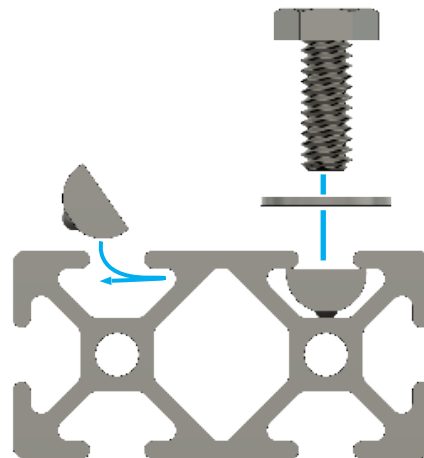
2

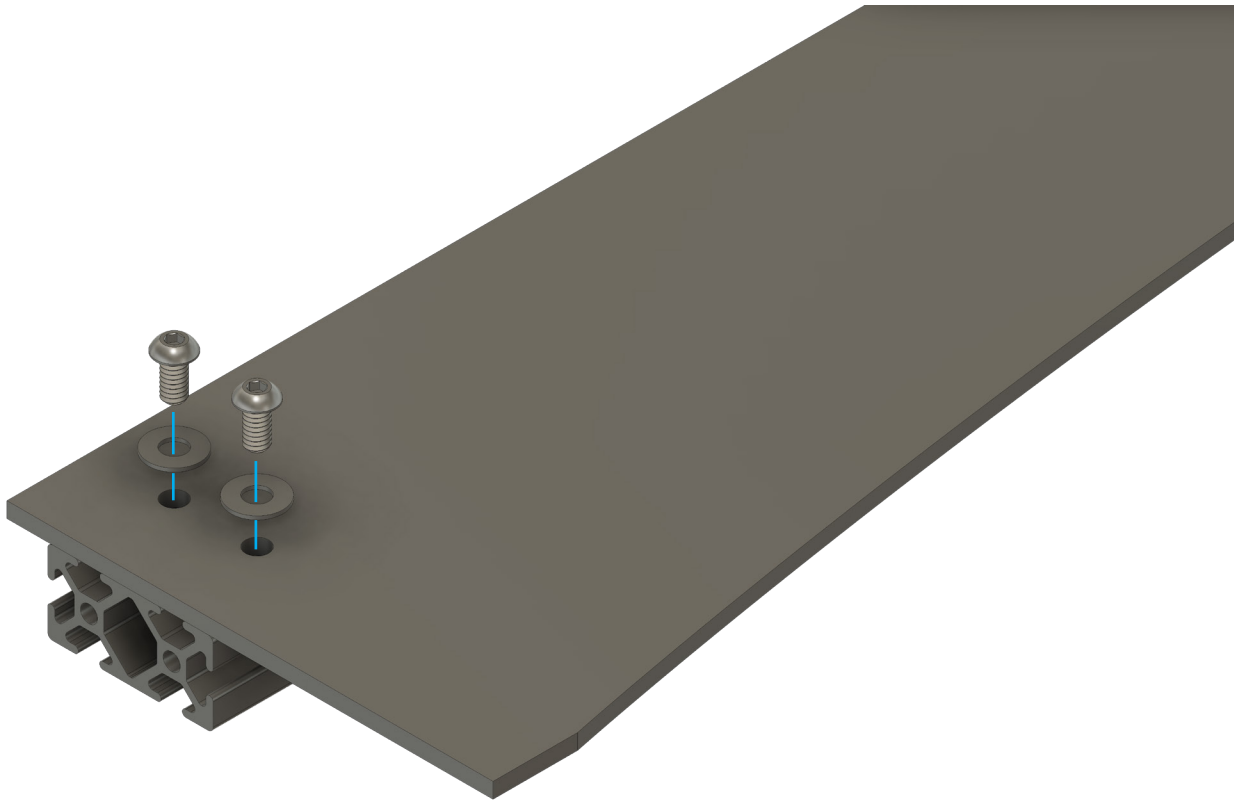
FRONT
ADJUSTABLE
MOUNTS

BEFORE YOU BEGIN

Remove your stock roof rack (if applicable) and make sure you have 8 capture nuts available in the black roof track.

USING TNUTS





PRE-ASSEMBLY

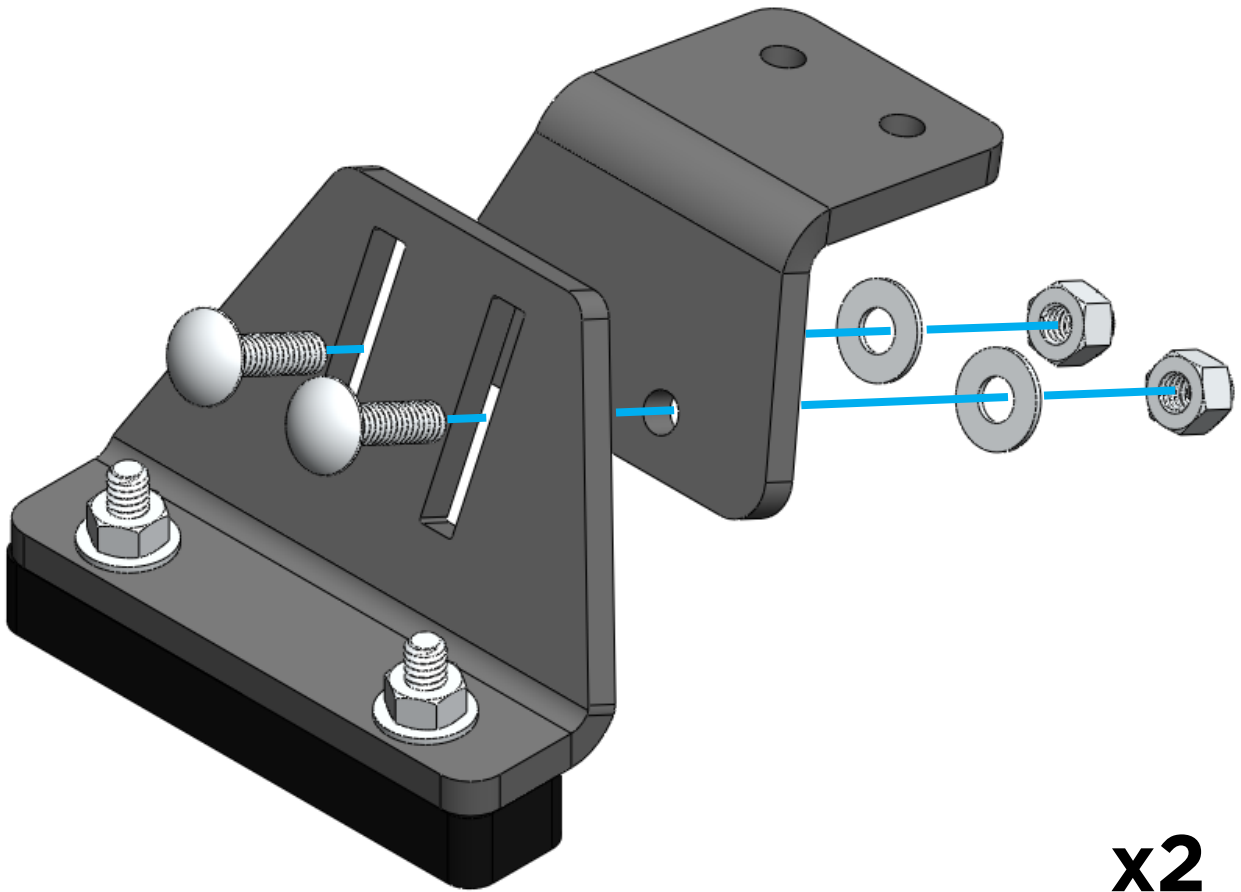
Required Components:

6x 1/4"-20 x 1/2"

6x 1/4" Flat Washers

6x Tnuts

Drop 6 tnuts into the slots on the cross member and line them up with the holes in the fairing. Secure with 6 bolts and washers.



PRE-ASSEMBLY

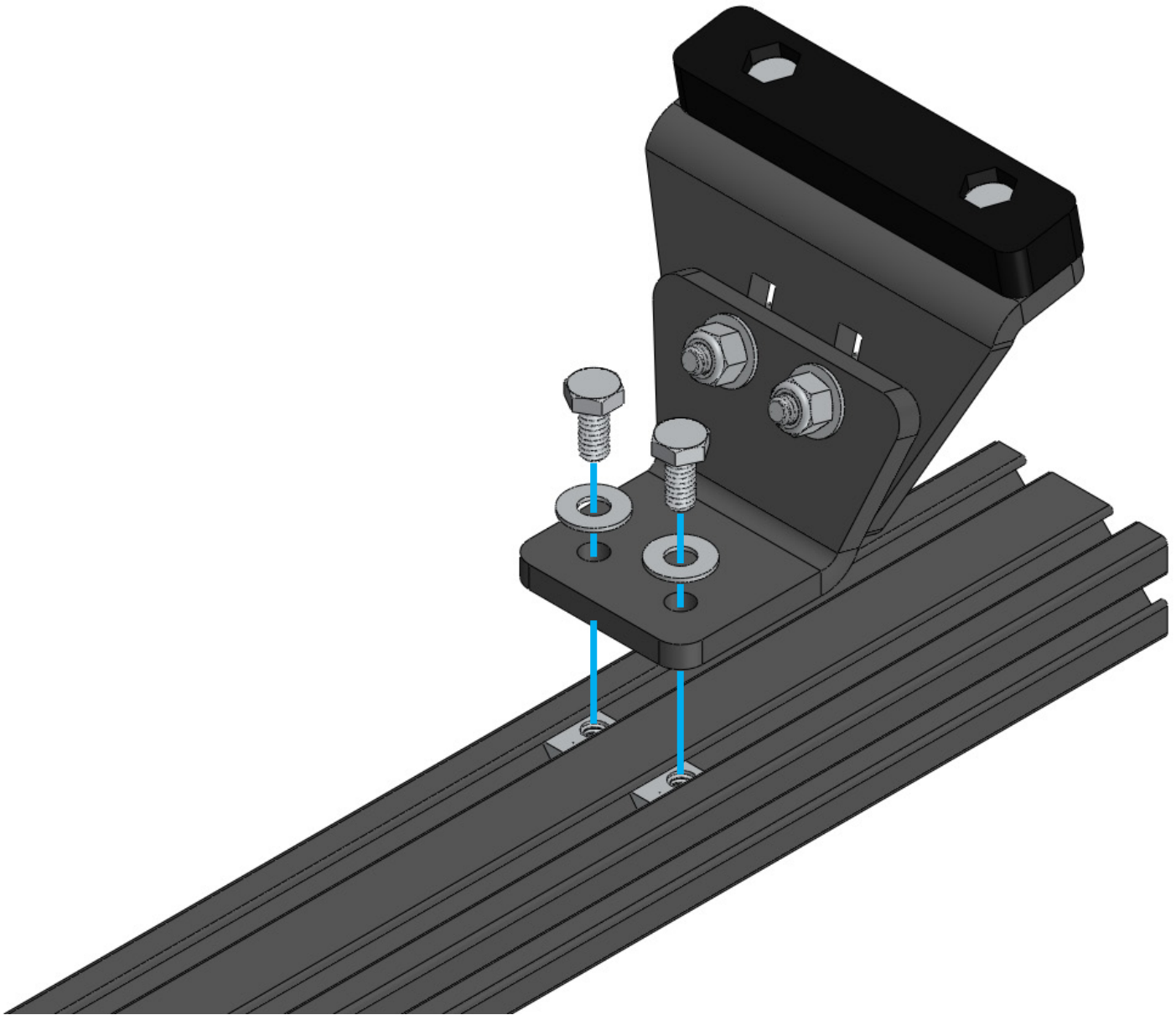
Required Components:

4x 1/4"-20 x 1" Carriage bolt

12x 1/4" Flat Washers

4x Nylon Lock Nuts

Install the hardware as pictured above, but leave the assembly loose so that it can be adjusted during a later step.



01

Required Components:

4x 1/4"-20 x 5/8" Hex bolt

4x 1/4" Flat Washers

4x T-nuts

Drop two t-nuts into the slotted profile of the extrusion. Fasten the front leveling mounts to the crossbar by threading 4 bolts and washers through the leveling bracket and into the t-nuts. Repeat this step so that both adjustable feet are mounted to the same cross member.



02

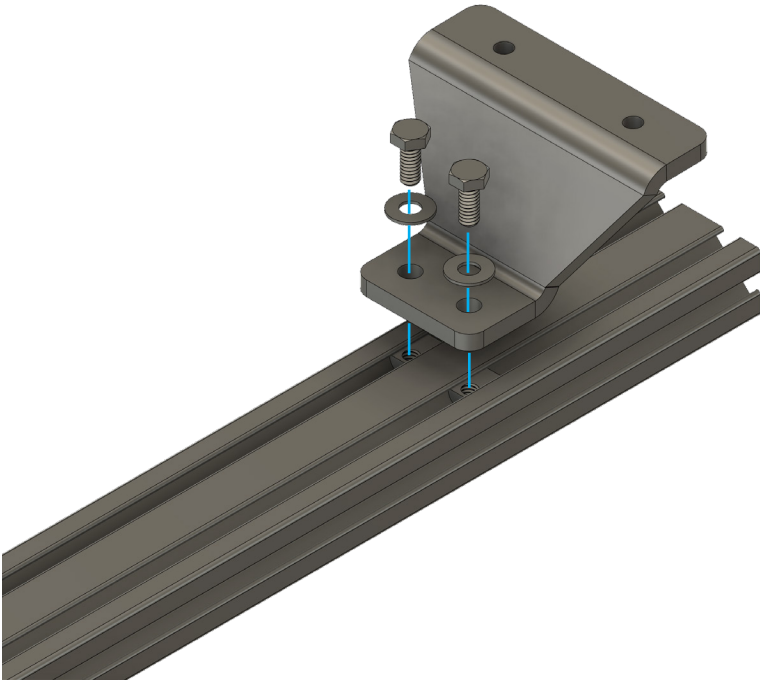
Required Components:

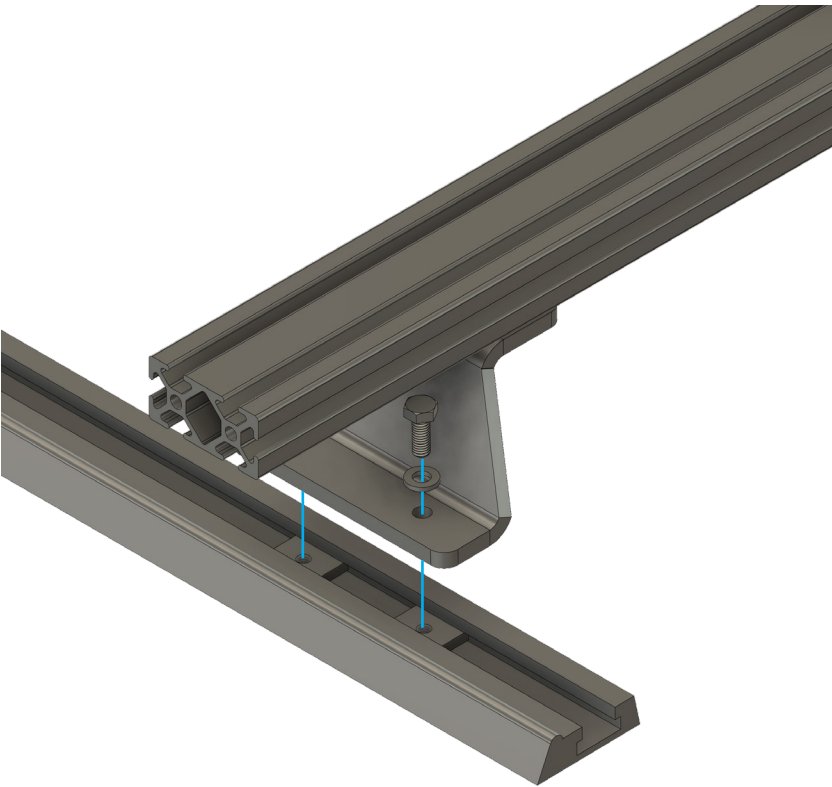
8x 1/4"-20 x 5/8"

8x 1/4" Flat Washers

8x Tnuts

Install the two rear pairs of mounting brackets on two more cross members. Bolt the top of the mounting brackets to the cross member, one foot on each end as shown in the diagram. Leave this hardware loose so that it can be adjusted once the cross members are placed on the vehicle.





03

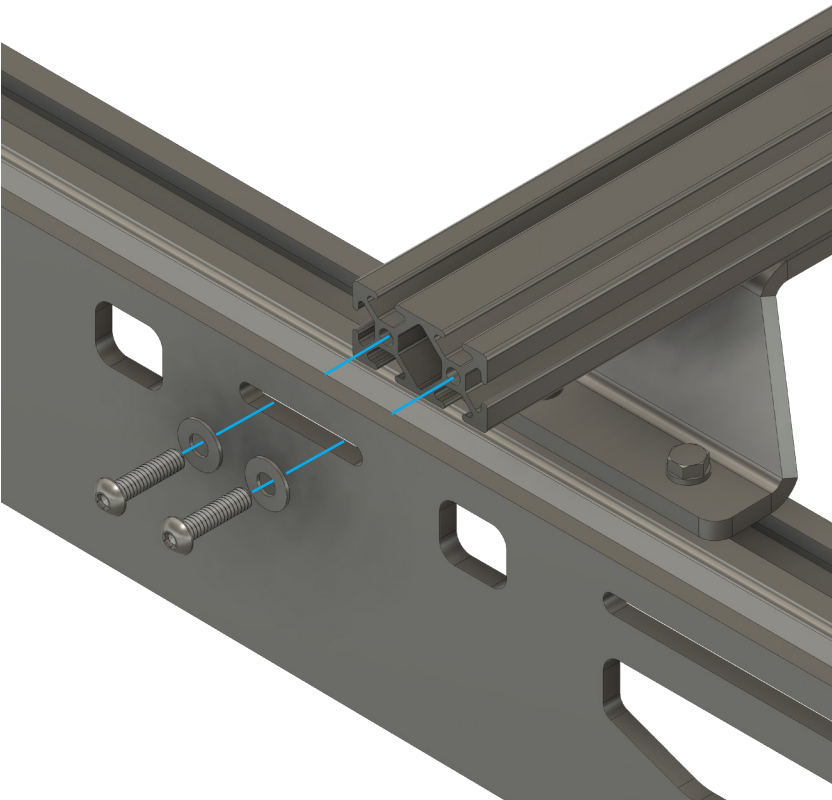
Required Components:

8x M6 Bolts

8x M6 Flat Washers

With the two main support cross members assembled, flip them over and align the mounting brackets with the OEM roof tracks. Secure them to the vehicle using 8 M6 bolts and washers, passed through the mounting bracket and into the capture nuts in the roof track. Leave this hardware loose so that it can be adjusted once the side plates are attached.

Center the cross members on the vehicle using a tape measure and tighten them to the mounting bracket.



04

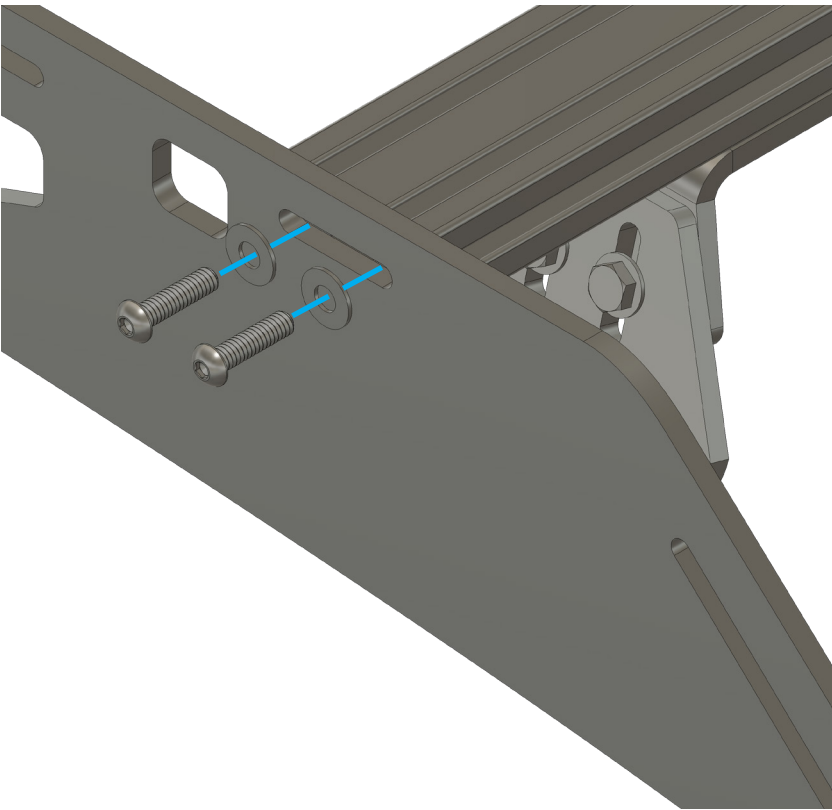
Required Components:

8x 1/4"-20 x 1"

8x 1/4" Flat Washers

After the main support cross members have been secured to the vehicle, you can install the side plates. Align the small slots in the rack side with the ends of the main support crossmembers. Secure it using 8 bolts and washers. Leave the bolts loose enough to move the sideplate to the position that matches the curve of the vehicle.

Once the rack is positioned correctly, tighten down all of the hardware for the rack sides, mounting hardware and roof track bolts.



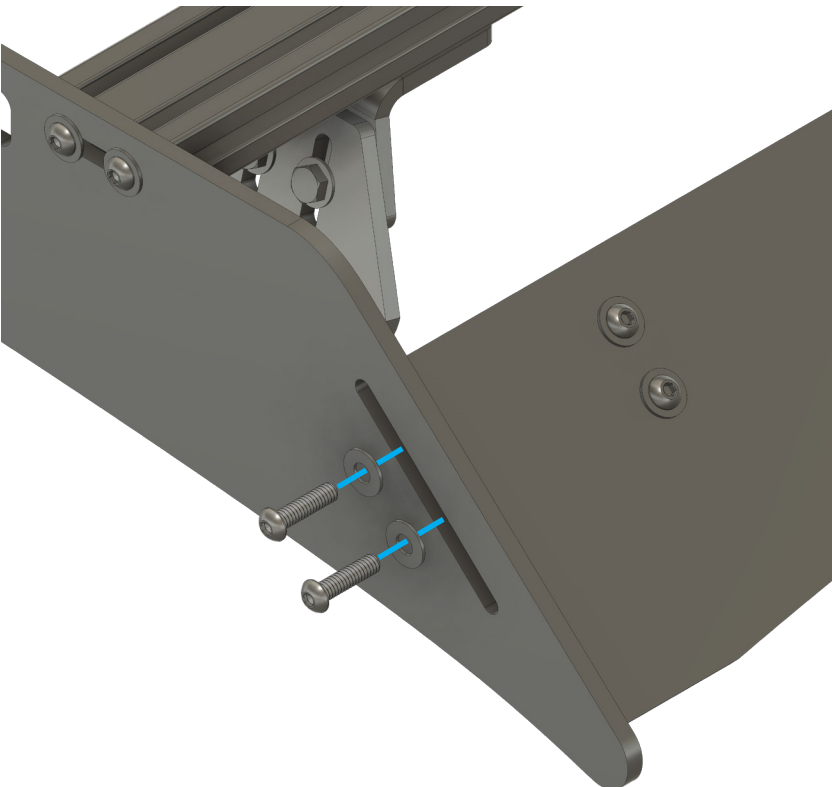
05

Required Components:

4x 1/4"-20 x 1"

4x 1/4" Flat Washers

With the side plates attached to the vehicle, align the vertical cross member (with adjustable leveling mounts) to the small vertical slot. Fasten it with 4 bolts and washers.



06

Required Components:

4x 1/4"-20 x 1"

4x 1/4" Flat Washers

Position the wind fairing in line with the diagonal slot at the front of the rack. Align the bottom of the fairing with the tip of the roof rack and secure it using 4 bolts and washers.



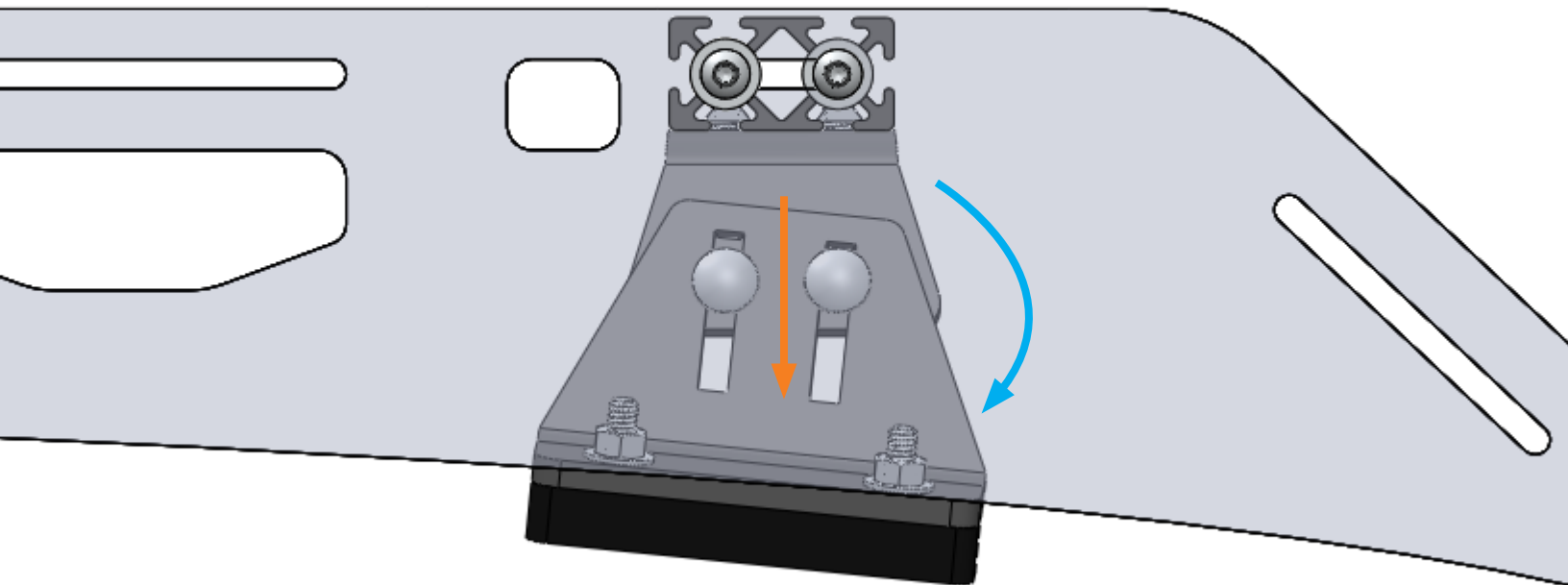
07

Required Components:

20x 1/4"-20 x 7/8"

20x 1/4" Flat Washers

Secure all of the remaining cross members to the rack system. Position according to your load requirements.



07

Final adjustments can be made to the front leveling mounts once the rack has been assembled on the vehicle. We recommend an extra set of hands for this step. You may also need to loosen the middle mounts for this step depending on your configuration.

Apply upward pressure on the front of the rack and insert a microfiber towel or other soft buffer between the front of the rack and the vehicle's roof. Adjust the **angle** and **height** of the mounting foot to sit as firmly on the vehicle's roof as possible, then tighten the hardware in the center of the mount. It is recommended to position these mounts on the plastic gutter trim to prevent possible paint damage.

Once the mounts are in the correct position, remove the buffer and inspect the rack to make sure it is firm.

EXPLORE.

All products built and designed by Sherpa Equipment Company are intended for off-road use and should be assembled, installed, and used according to Sherpa Equipment Company's recommendations. Sherpa Equipment Companies products should be used safely with good judgment towards others and surroundings.

By installing Sherpa Equipment Companies products on your vehicle you assume all liability. Sherpa Equipment Company will not be held liable for damages or loss associated with the installation or use of its products. It is recommended that you inspect your roof rack within the first 100 miles of installation and every 500 miles after.