



KC GRAVITY BAR BRACKETS

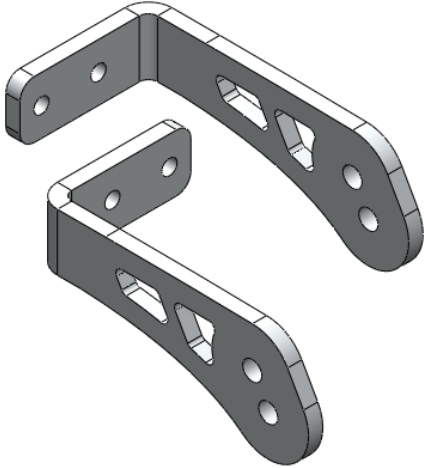
I N S T A L L I N S T R U C T I O N S

HARDWARE CHECKLIST

Exact hardware color counts may vary based on the options selected at checkout.

2

Brackets



4

1/4"-20
(9/16")



4

1/4"-20 Nut

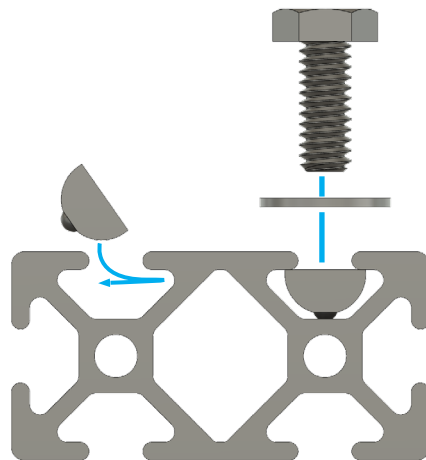


4

1/4" Washer



USING TNUTS

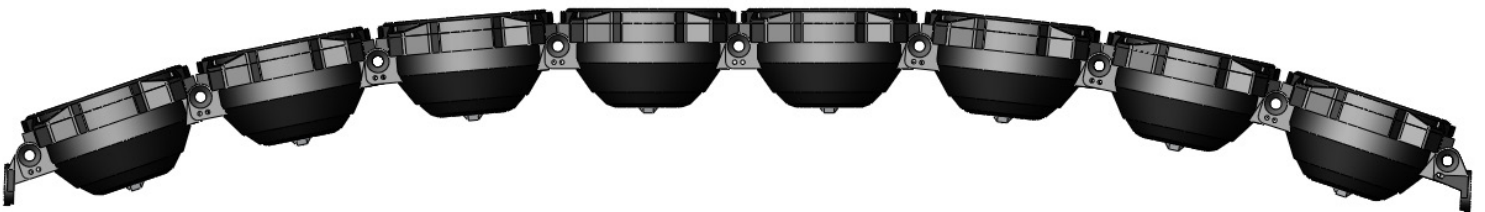


Install 01

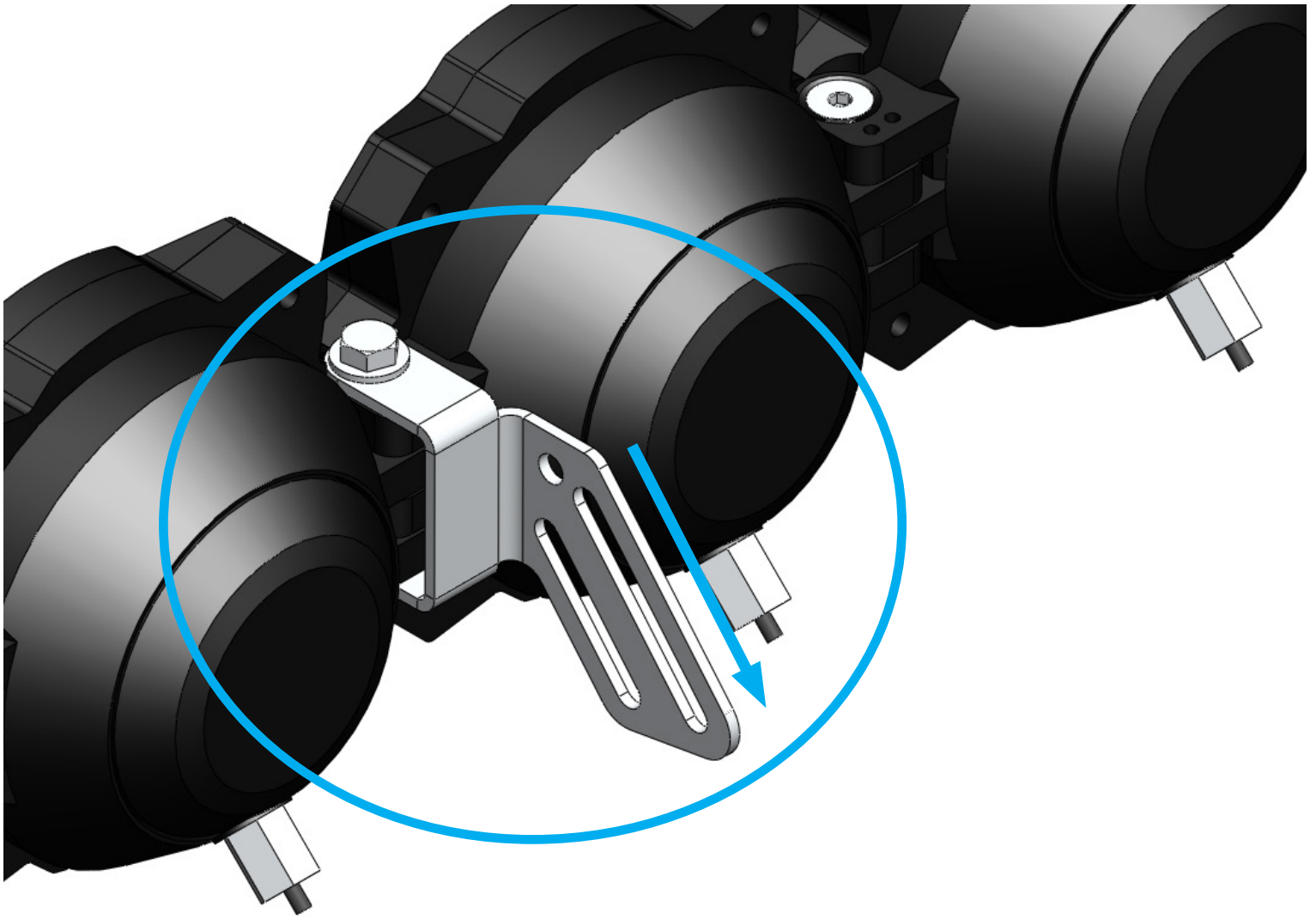
Follow the manufacturer's instructions on configuring the Gravity Pro bar to your liking. The Sherpa brackets will work if the bar is straight or curved.



STRAIGHT

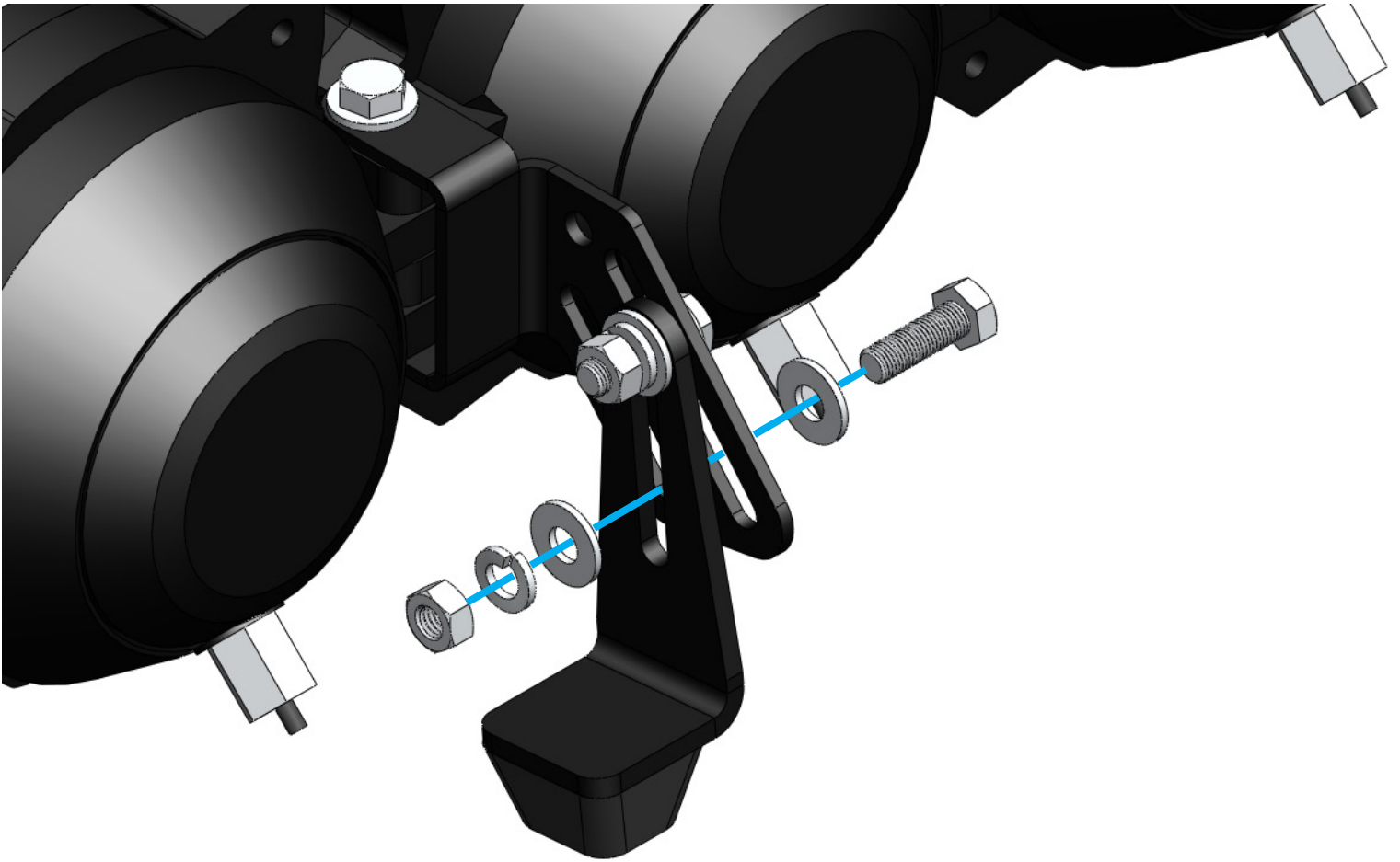


CURVED



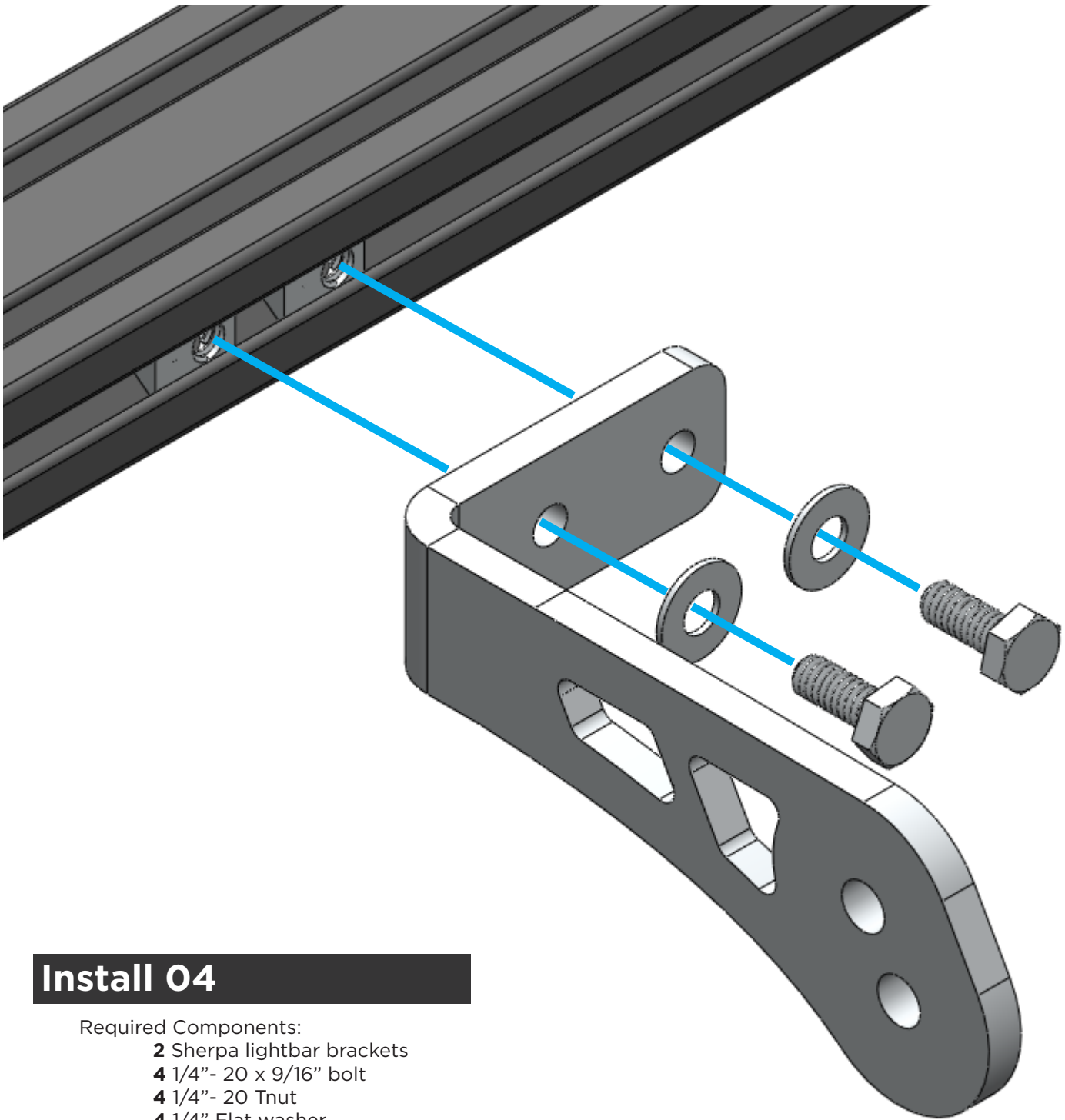
Install 02

Flip the direction that the support bracket faces on the Gravity Pro bar. The flange should point **downwards** toward the roof of the vehicle.



Install 03

Fasten the bump stop supplied by KC to the support bracket that was flipped downwards in Install Step 02 using the M8 hardware as pictured (also supplied by KC). There are two slots in the support bracket and a single slot in the bump stop - utilize one bolt per slot in the support bracket.



Install 04

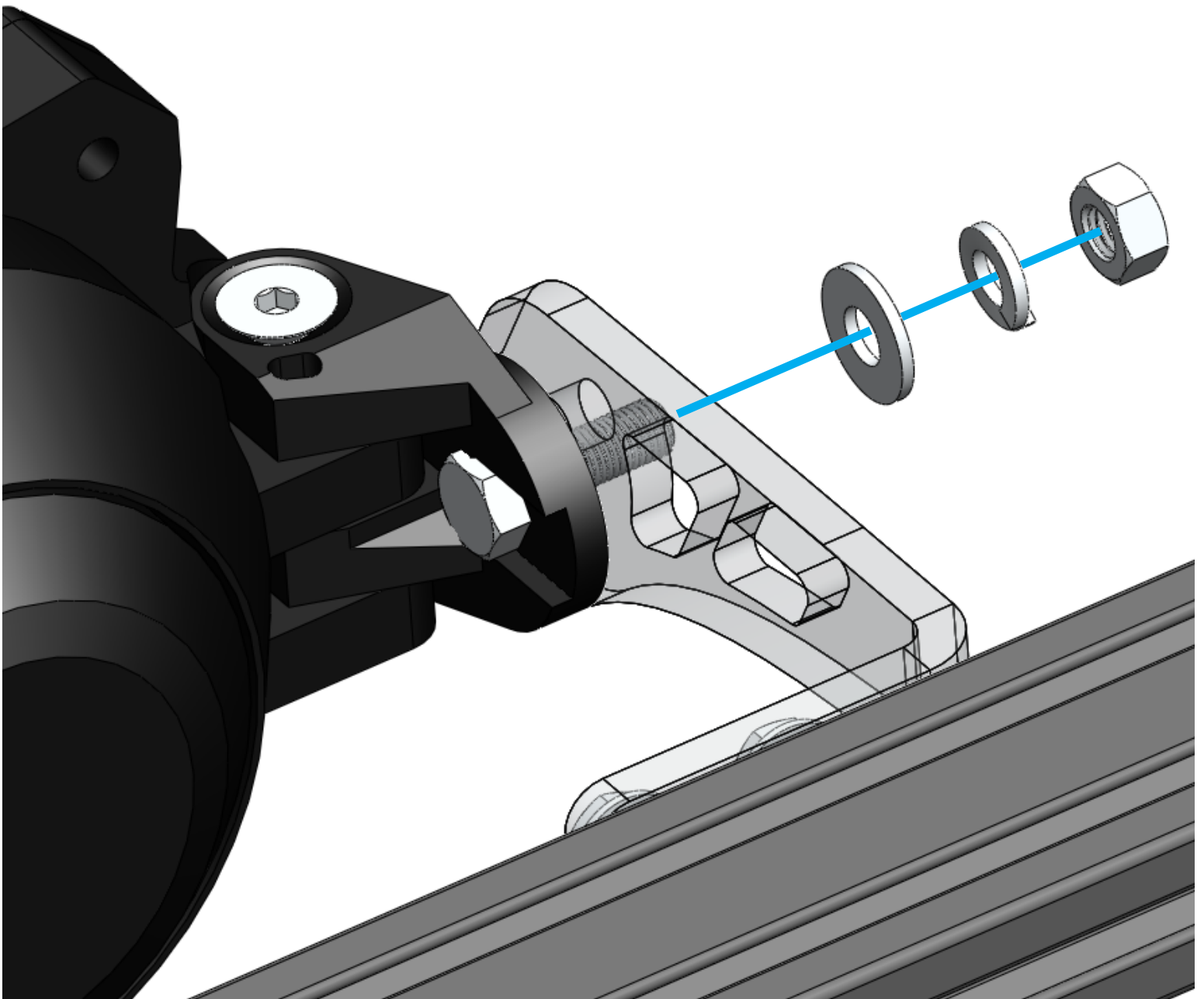
Required Components:

- 2 Sherpa lightbar brackets
- 4 1/4"- 20 x 9/16" bolt
- 4 1/4"- 20 Nut
- 4 1/4" Flat washer

Fasten the Sherpa lightbar brackets to the forward-most cross member available on the roof rack using the hardware supplied. Leave these brackets slightly loose so that they can be moved along the length of the cross member to accommodate the length of the assembled KC Gravity Pro bar.

Install 05

Use the remaining fasteners supplied by KC to attach the Gravity Pro bar to the Sherpa lightbar brackets. Utilize the mounting hole option in the Sherpa bracket that suits your needs the best. Tighten all fasteners down to finalize the installation.



EXPLORE.

All products built and designed by Sherpa Equipment Company are intended for off-road use and should be assembled, installed, and used according to Sherpa Equipment Company's recommendations. Sherpa Equipment Companies products should be used safely with good judgment towards others and surroundings.

By installing Sherpa Equipment Companies products on your vehicle you assume all liability. Sherpa Equipment Company will not be held liable for damages or loss associated with the installation or use of its products. It is recommended that you inspect your roof rack within the first 100 miles of installation and every 500 miles after.