

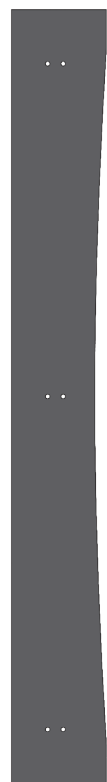
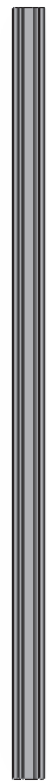



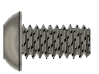

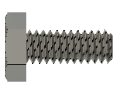


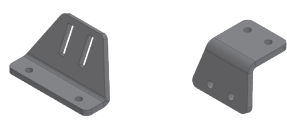

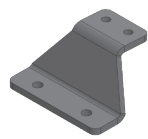
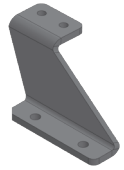






**SHERPA**  
PREMIUM RACK SYSTEMS

**THE**  
**ATLAS**  
RACK SYSTEM INSTALL GUIDE

# HARDWARE CHECKLIST

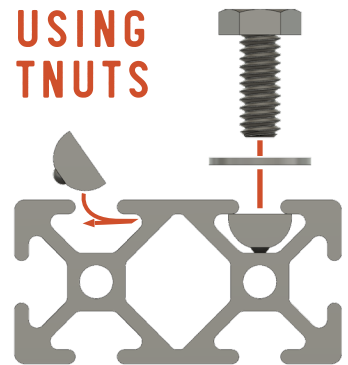
<p><b>12</b> M8-1.25 (45MM)</p> 	<p><b>18</b> 1/4"-20 TNUT</p> 	<p><b>1</b> WIND FAIRING</p> 	<p><b>10</b> CROSSBARS</p> 	<p><b>2</b> SIDEPLATES</p> 
<p><b>40</b> 1/4"-20 (1") SB</p> 	<p><b>62</b> 1/4" FLAT WASHER</p> 			
<p><b>6</b> 1/4"-20 (1/2") SB</p> 	<p><b>12</b> M8 BONDED WASHER</p> 			
<p><b>16</b> 1/4"-20 (9/16") HEX</p> 	<p><b>4</b> 1/4"-20 NUT</p> 			
<p><b>4</b> 1/4"-20 (1") CARRIAGE</p> 	<p><b>2</b> ADJ MOUNTS PN: RS</p> 			
		<p><b>2</b> FRONT MOUNTS PN: AL F</p> 		
		<p><b>2</b> MIDDLE MOUNTS PN: AL M</p> 		
		<p><b>2</b> REAR MOUNTS PN: AL R</p> 		
		<p><b>6</b> RUBBER SPACERS</p> 		
		<p><b>FORWARD-MOST MOUNT</b></p> 		

## BEFORE YOU START

Remove your stock roof rack (if applicable). Loosen all stock rack bolts before fully removing any of them. This will prevent the capture plates from working loose inside of the roof. Work slowly when removing the stock rack as not to break the plastic sleeves.

The below assembly images may differ slightly in appearance from actual product.

## USING TNUTS



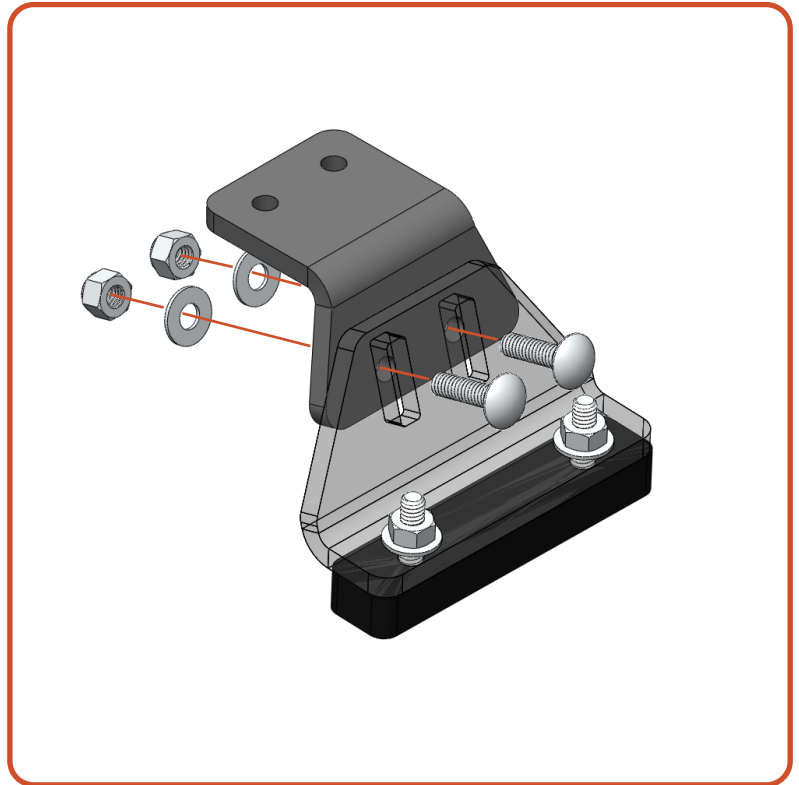
# MOUNTS

## 01 ADJUSTABLE MOUNT

Required Components:

- 4 1/4"-20x1" Carriage Bolts
- 4 1/4" Washers
- 4 1/4"-20 Nuts

Secure the lower and upper adjustable mount brackets leaving the hardware loose so that it can be adjusted during a later step.



# MOUNTS

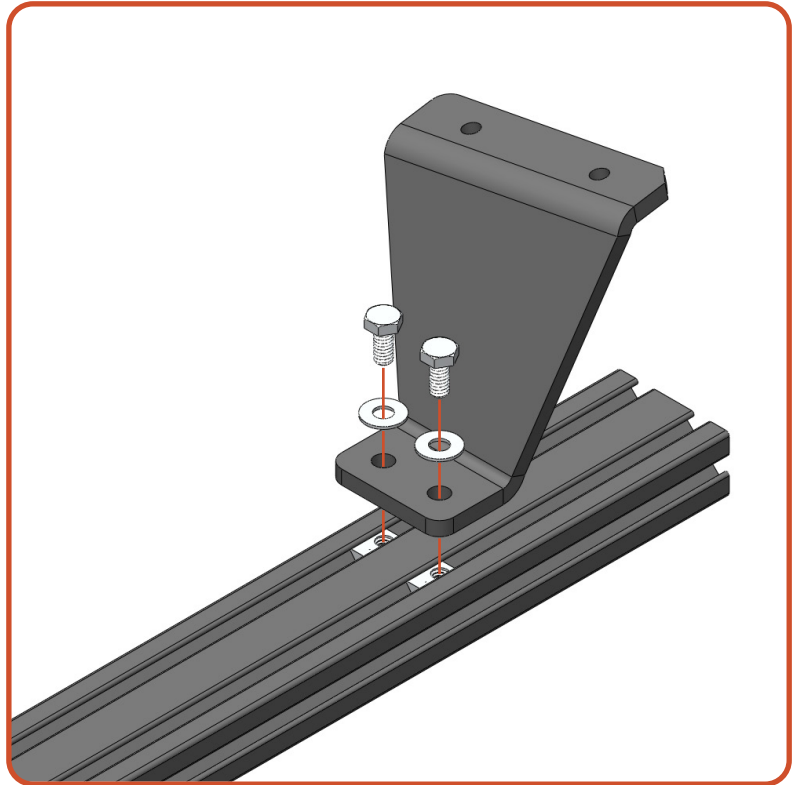
## 01 FRONT MOUNT ASSEMBLY

Required Components:

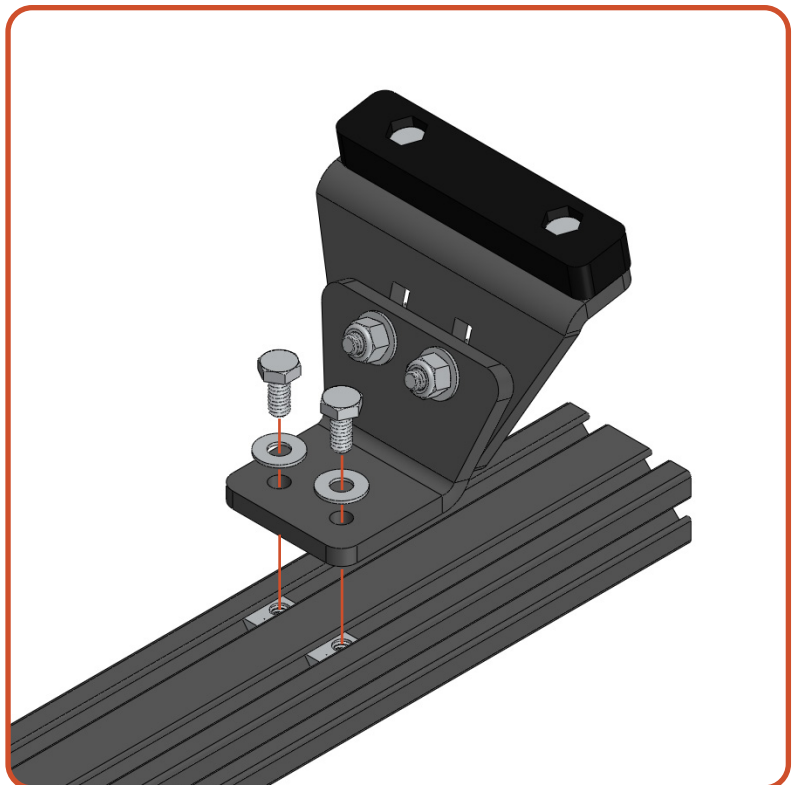
- 1 Crossbar
- 2 Front Mounts
- 4 1/4"-20 x 9/16" Hex Bolts
- 4 1/4" Flat Washers
- 4 Tnuts

Drop 4 tnuts into the slots on the crossbar and line them up with the holes in mounts. Secure top of the mounting bracket to the crossbar leaving the hardware loose so that it can be adjusted during a later step.

Note: Front mounts have the "F" designation at the end.



AND/OR



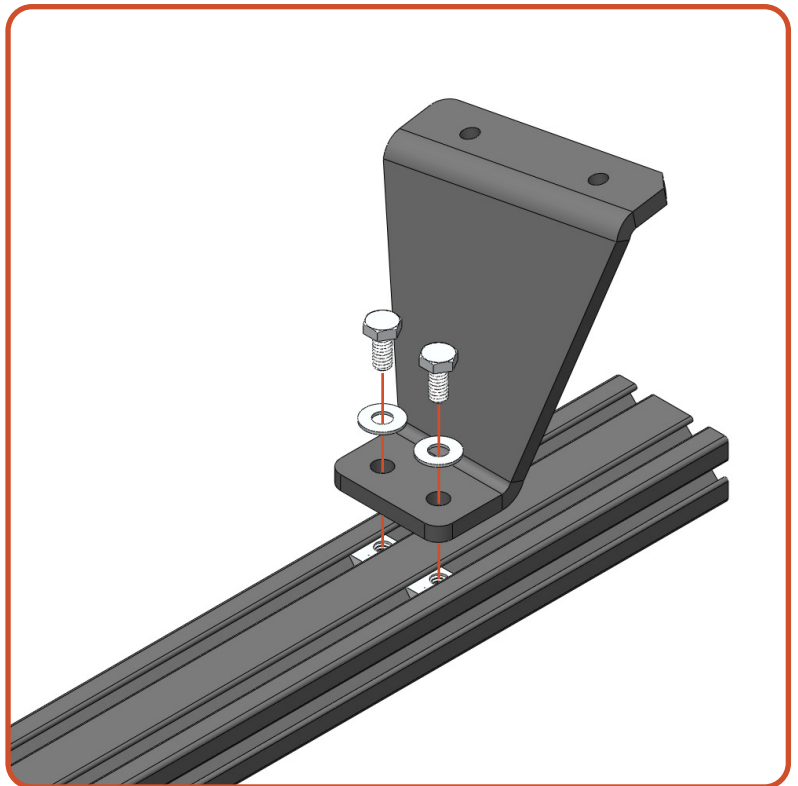
## Ø2 REAR MOUNT ASSEMBLY

Required Components:

- 1 Crossbar
- 2 Rear Mounts
- 4 1/4"-20 x 9/16" Hex Bolts
- 4 1/4" Flat Washers
- 4 Tnuts

Repeat assembly.

Note: Rear mounts have the "R" designation at the end.



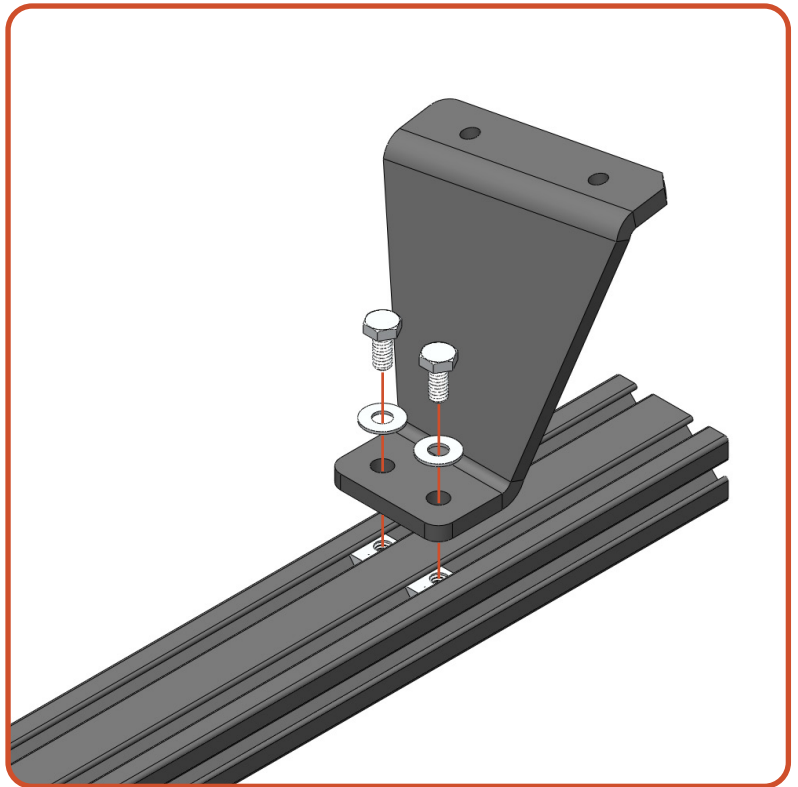
## Ø3 MID MOUNT ASSEMBLY

Required Components:

- 1 Crossbar
- 2 Rear Mounts
- 4 1/4"-20 x 9/16" Hex Bolts
- 4 1/4" Flat Washers
- 4 Tnuts

If your rack comes with a middle mount(s), repeat assembly.

Note: Middle mounts have the "M" designation at the end.



# MOUNT INSTALL

## 01 INSTALL ON VEHICLE

Required Components:

- 4** M8-1.25x45 Hex Bolts  
**per mount assembly**
- 4** M8 Bonded Washers  
**per mount assembly**
- 2** Rubber Spacers  
**per mount assembly**

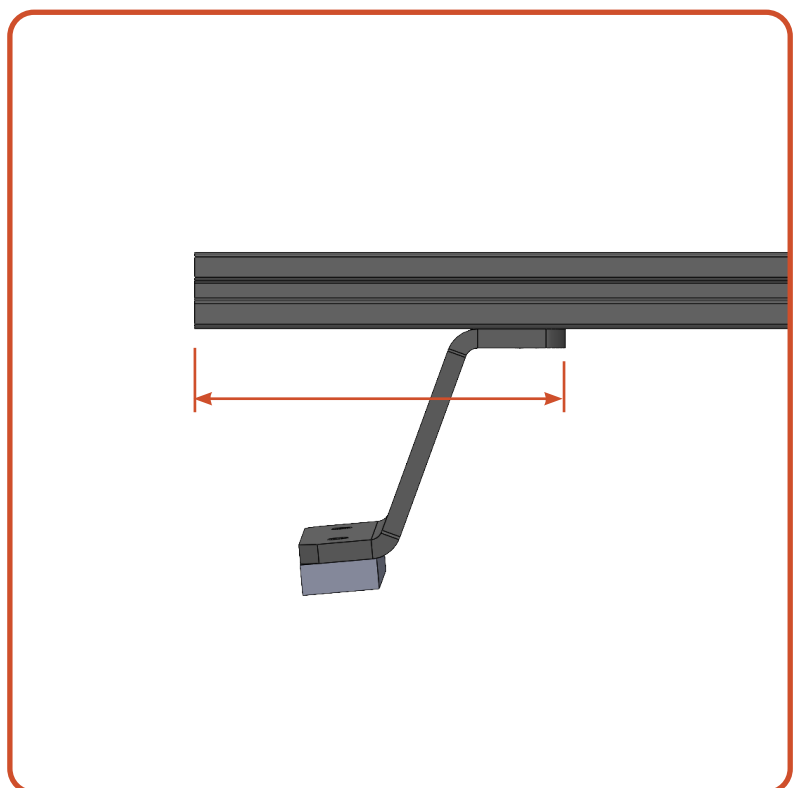
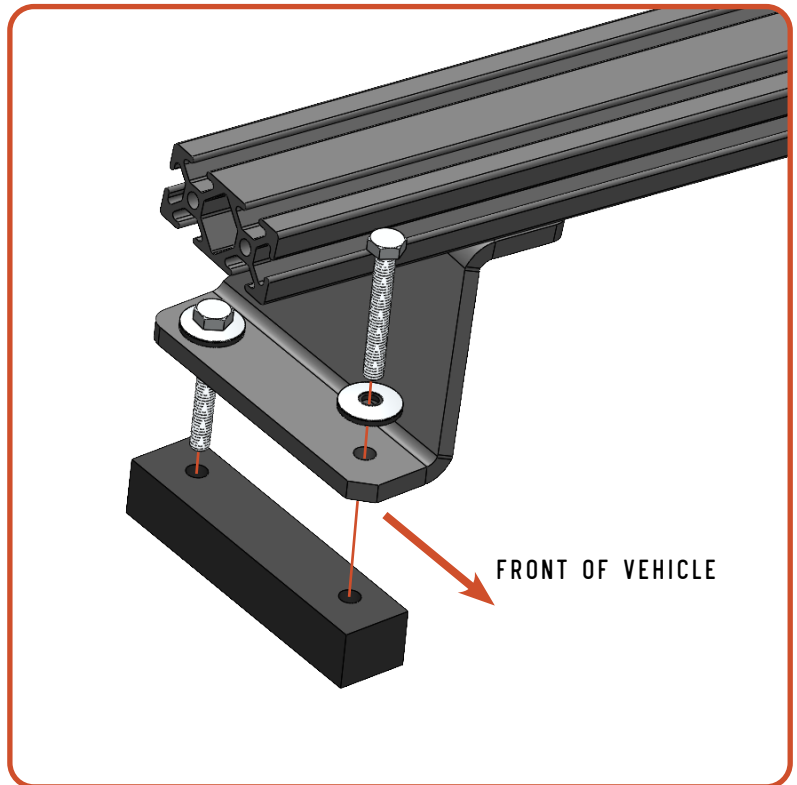
Position the mounting bracket over the rubber spacer. Apply a drop of blue threadlocker to each of the bolt threads and secure them with bonded washers passed through the bracket, rubber, and into the holes in the roof.

Note: Chamfered corner on the lower part of the mount faces the front of the vehicle.

**The bonded washers should compress and become flat, but not concave. Do not over tighten these mounts.**

## 02 CENTER THE MOUNTS

After the main support crossbar have been secured to the vehicle, use a tape measure and center all of the bars on the vehicle. Measure from the inside edge of the mount to the outside face of the crossbar and make these equal side-to-side. Tighten the hardware to the crossbar.



# SIDEPLATES

## 01 SIDEPLATE INSTALL

Required Components:

- 2 Sideplates
- 4 1/4"-20x1" Socket Bolts  
**per mount assembly**
- 4 1/4" Washers  
**per mount assembly**

Align the small slots in the sideplates with the ends of the main support crossbars. Secure them using bolts and washers. Leave the bolts loose enough to move the sideplate to the position that matches the curvature of the vehicle.

Once the rack is positioned correctly, tighten down all of the hardware for the sideplates.



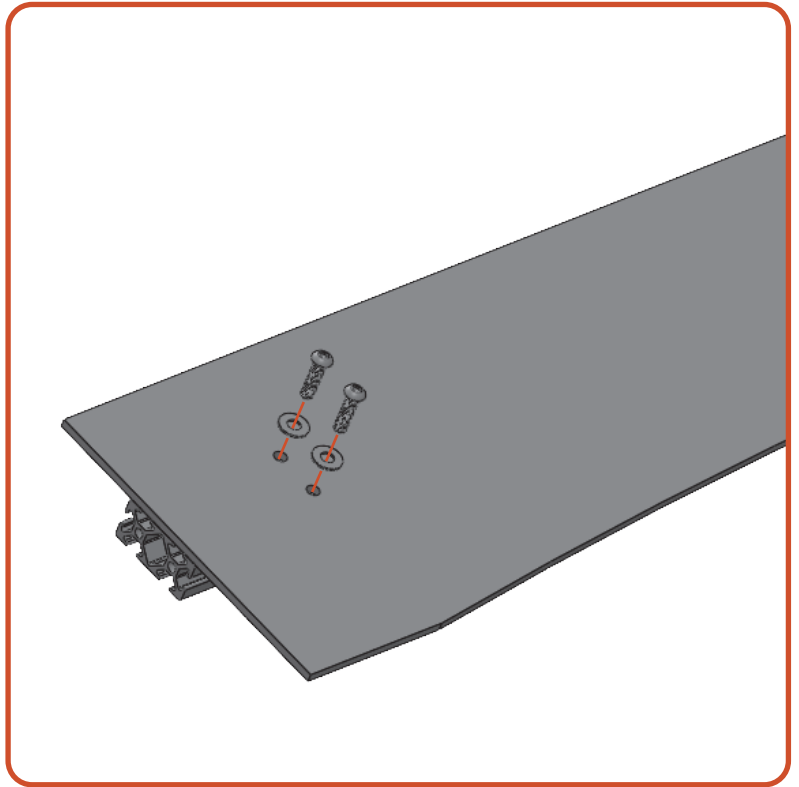
# WIND FAIRING

## 01 FAIRING ASSEMBLY

Required Components:

- 1 Crossbar
- 6 1/4"-20x1/2" Socket Bolts
- 6 1/4" Flat Washers
- 6 Tnuts

Drop 6 tnuts into the slots on the crossbar and line them up with the holes in the fairing. Secure with 6 bolts and washers.



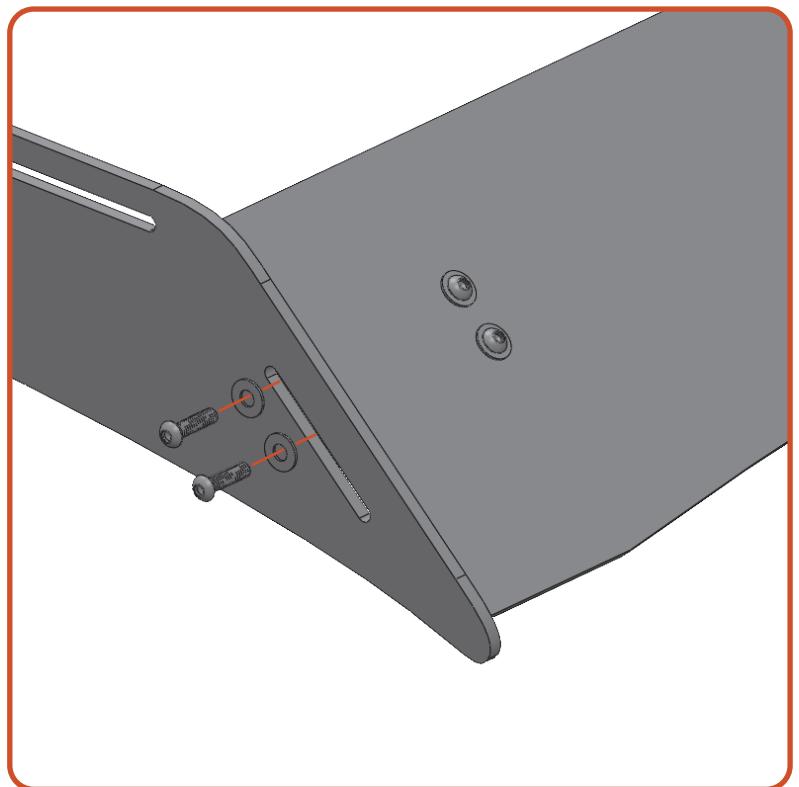
## 02 FAIRING INSTALLATION

Required Components:

- 4 1/4"-20x1" Socket Bolts
- 4 1/4" Flat Washers

Position the wind fairing in line with the diagonal slot at the front of the rack. Align the bottom of the fairing with the tip of the roof rack and secure it using bolts and washers.

The fairing can be adjusted up or down if wind noise is detected. Small adjustments make a big difference here.





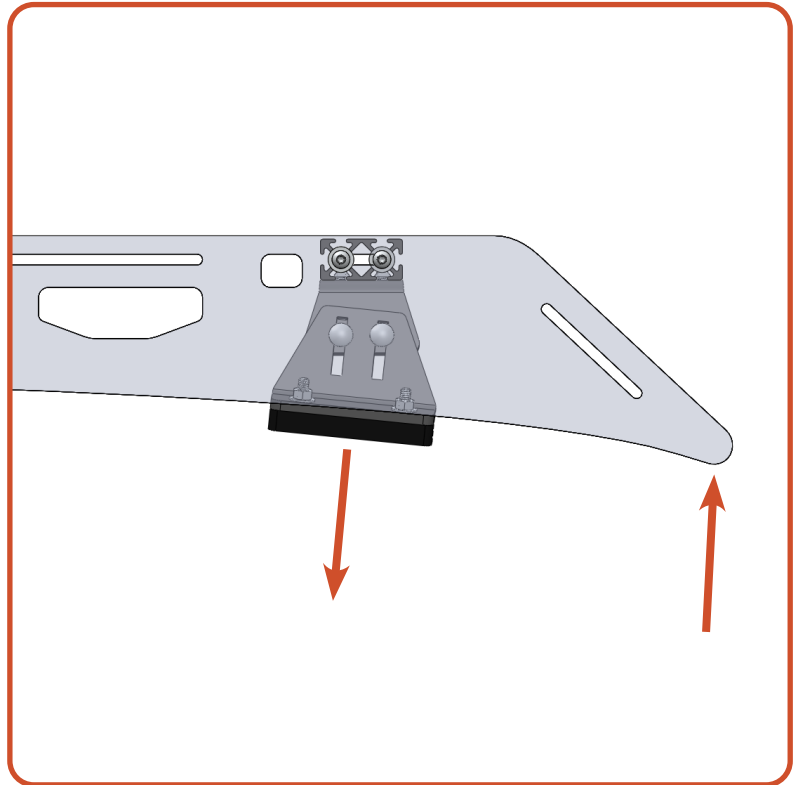
# MOUNT INSTALL

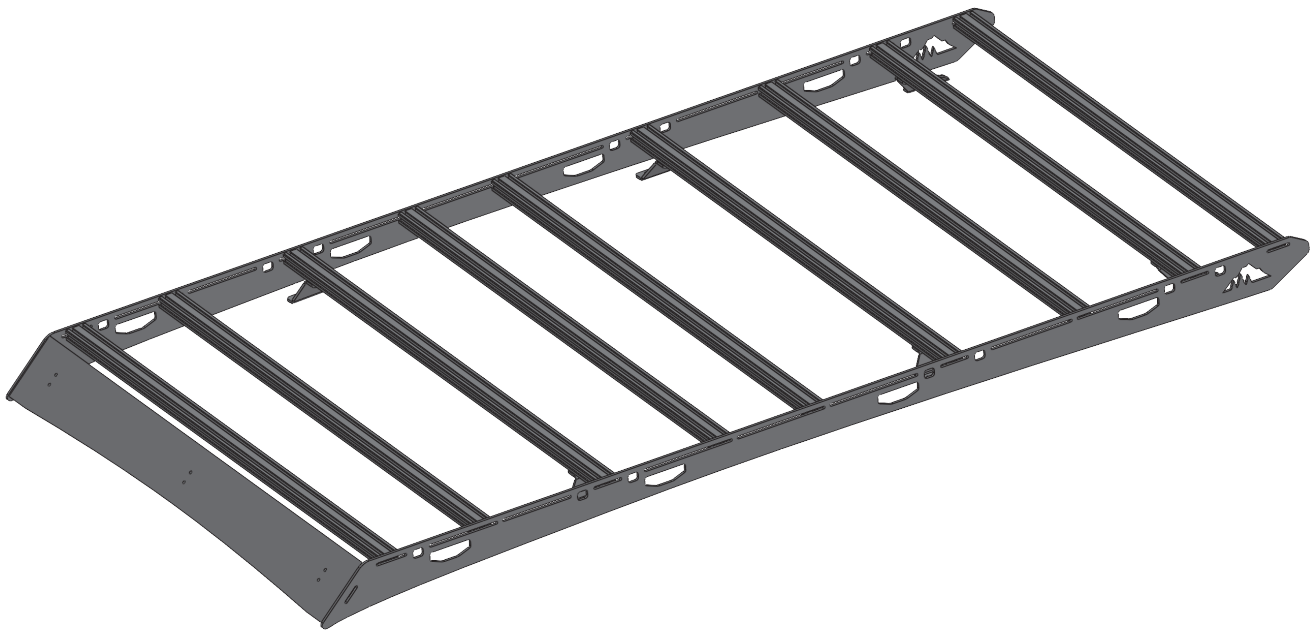
## 01 INSTALL ON VEHICLE

Final adjustments can be made to the front leveling mounts once the rack has been assembled on the vehicle.

Apply upward pressure on the front of the rack and insert a microfiber towel or other soft buffer between the front of the rack and the vehicle's roof. Adjust the angle and height of the mounting foot to sit as firmly on the vehicle's roof as possible, then tighten the hardware in the center of the mount. If possible, it is recommended to position these mounts on the plastic gutter trim to prevent possible paint damage.

Once the mounts are in the correct position, remove the buffer and inspect the rack to make sure it is firm.





## 04 INSTALL CROSSBARS

Required Components:

- Remaining** Crossbars
- 4** 1/4"-20 x 1" Socket Bolts  
**per crossbar**
- 4** 1/4" Flat Washers  
**per crossbar**

Secure all of the remaining crossbars to the rack system. Space evenly or position according to your load requirements.

NOW GET OUT THERE AND  
**EXPLORE.**

**WELCOME TO THE SHERPA FAMILY!**  
MAKE SURE TO FOLLOW US ON YOUR SOCIALS AND TAG US IN YOUR ADVENTURES.

All products built and designed by Sherpa Equipment Company are intended for off-road use and should be assembled, installed, and used according to Sherpa Equipment Company's recommendations. Sherpa Equipment Company's products should be used safely with good judgment towards others and surroundings.

By installing Sherpa Equipment Company's products on your vehicle you assume all liability. Sherpa Equipment Company will not be held liable for damages or loss associated with the installation or use of its products. It is recommended that you inspect your roof rack within the first 100 miles of installation and every 500 miles after.