



5G 4RUNNER WINDOW PANEL

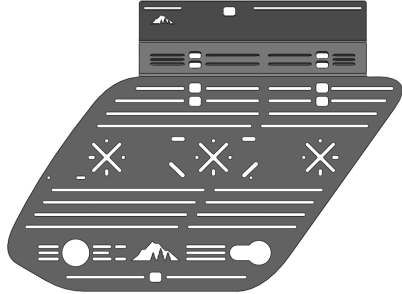
I N S T A L L I N S T R U C T I O N S

HARDWARE CHECKLIST

Exact hardware color counts may vary based on the options selected at checkout.

1

5G 4Runner Window Panel



2

1/4"-20 Socket button (1 1/4")



2

1/4"-20 Socket button (1")



2

1/4"-20 Socket Button (3/4")



6

1/4"-20 Nylock



12

1/4" Washer



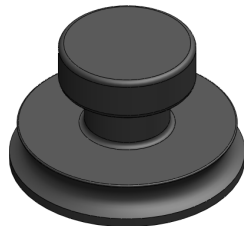
1

Drop Bracket



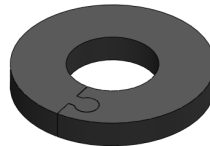
2

Suction Cups



2

Rubber Spacers



BEFORE YOU BEGIN

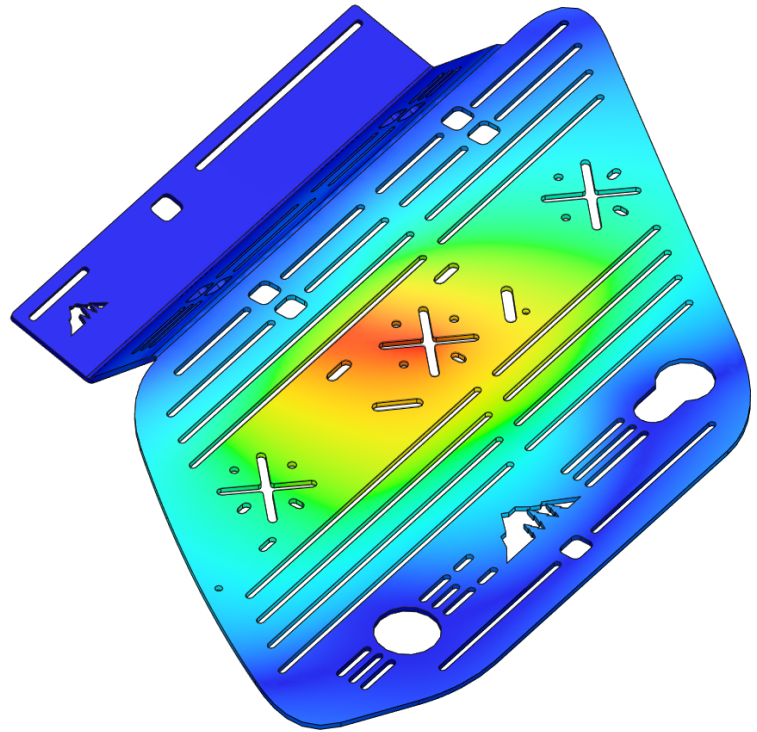
Installing a window panel can be difficult alone. Getting another person to lend a hand on the install can make the process a lot easier. The process outlined in these instructions is what we find to be the most consistent and straightforward method.

Foreword

The 5G 4Runner window panel has been developed with a maximum safe load of 35 lbs. This is the approximate weight of 2x 2 gallon Rotopax, or 1x 4 gallon Rotopax, full of water. It is important that the customer uses good judgement when loading the window panel. If the window panel or any protruding fasteners look close to contacting the glass, consider lowering the weight on the panel.

The window panel will deflect more as the load increases and the condition of the road surface worsens.

These instructions show a PASSENGER side window panel, but the same steps apply for a DRIVER side.

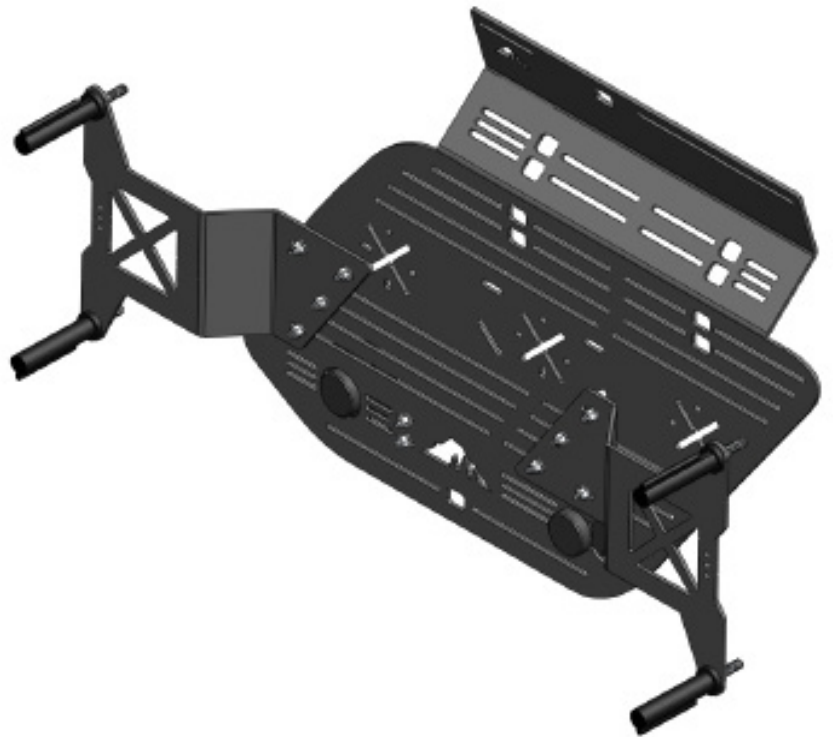


Install 01

It is highly suggested that any accessories that are going to be mounted to the window panel are installed before the window panel is installed on the vehicle. Access to bolts on the backside of the panel becomes limited once installed.

Installation instructions of common accessories are available on the [Sherpa Equipment website](#). As a general rule of thumb, bolts should be ran through the backside of the panel so that the nut and the extra thread face away from the glass.

If a certain size bolt is required that the accessory did not come with, Sherpa offers an assortment of hardware that should work. Contact us if you need assistance.



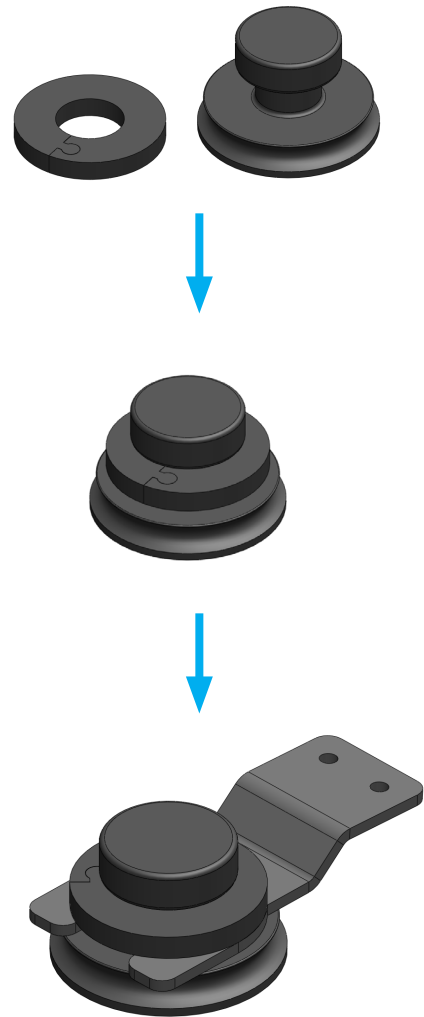
Install 02

Required Components:

- 1 Suction cup
- 1 Rubber spacer
- 1 Drop bracket

Split the ends of the rubber spacer and wrap it around the neck of the suction cup.

Insert the neck of the suction cup into the slot of the drop bracket, as pictured. Ensure that the drop bracket sits between the suction cup and the rubber spacer. The order of these components in this stack is important for getting the optimal spacing of the window panel from the glass.

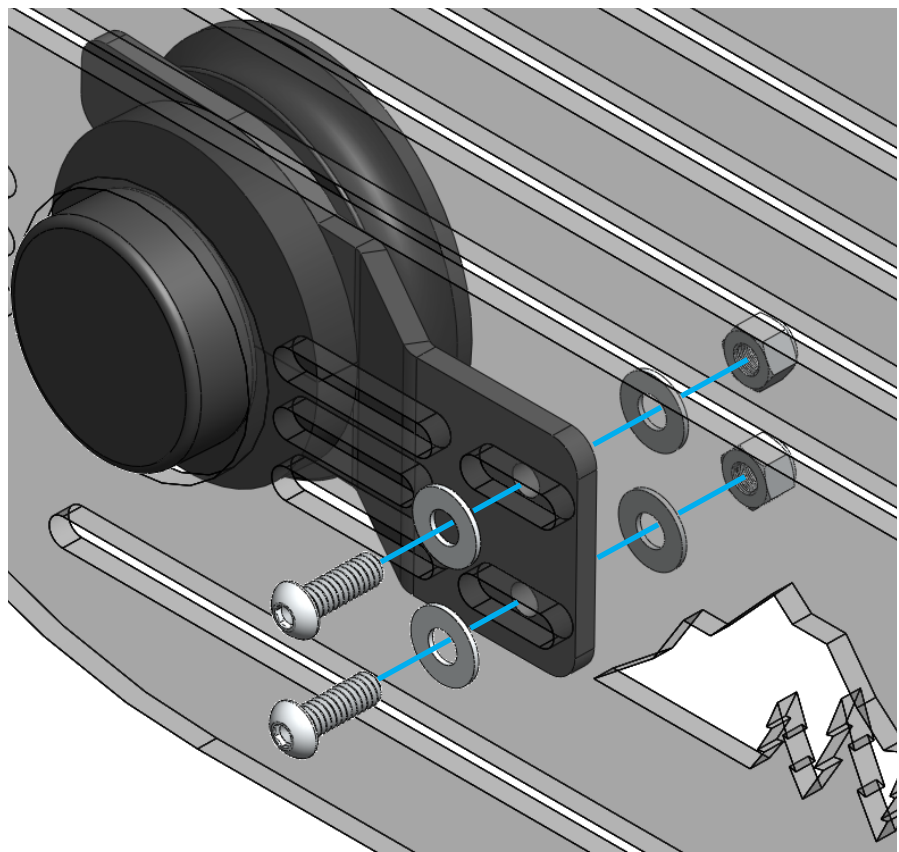


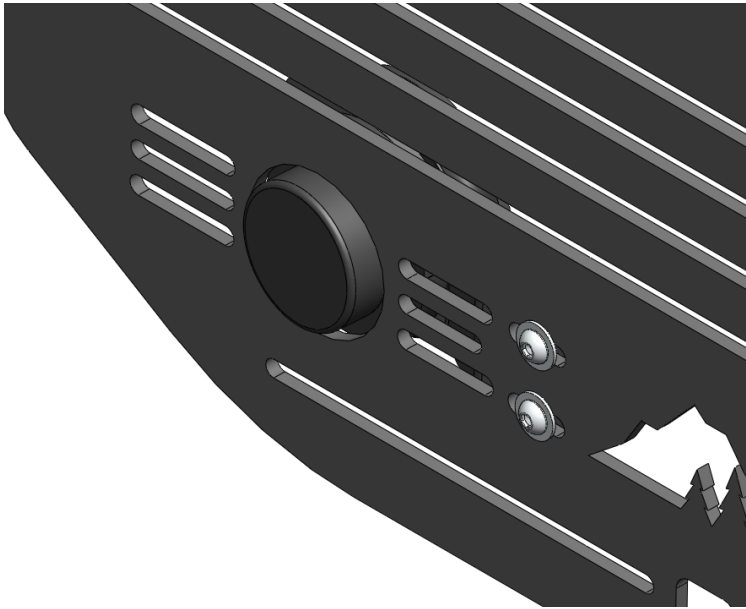
Install 03

Required Components:

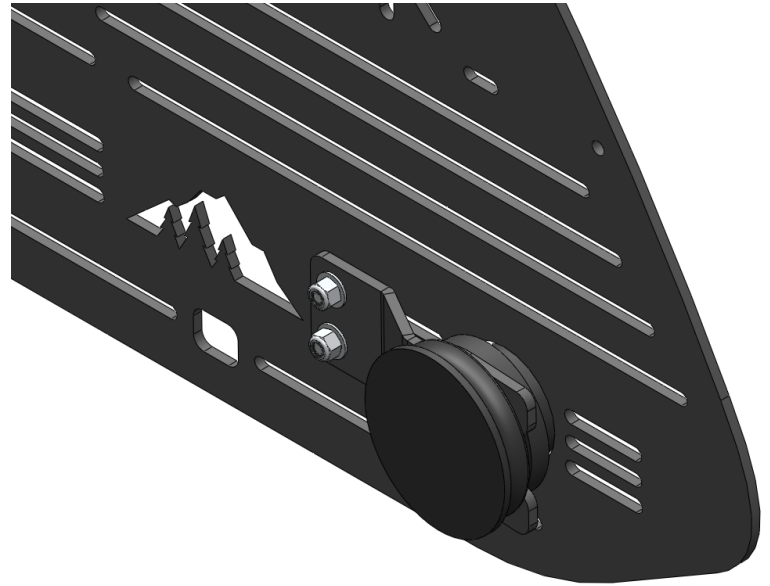
- 2 1/4"-20 x 3/4" Socket Button
- 2 1/4"-20 Nylock nut
- 4 1/4" Flat washer

Using the two short slots to the left of the Sherpa mountain cutout, fasten the drop bracket and suction cup assembly to the back side of the window panel. When lined up properly, the handle of the suction cup should be centered in the hole in the window panel.





Front view



Back view

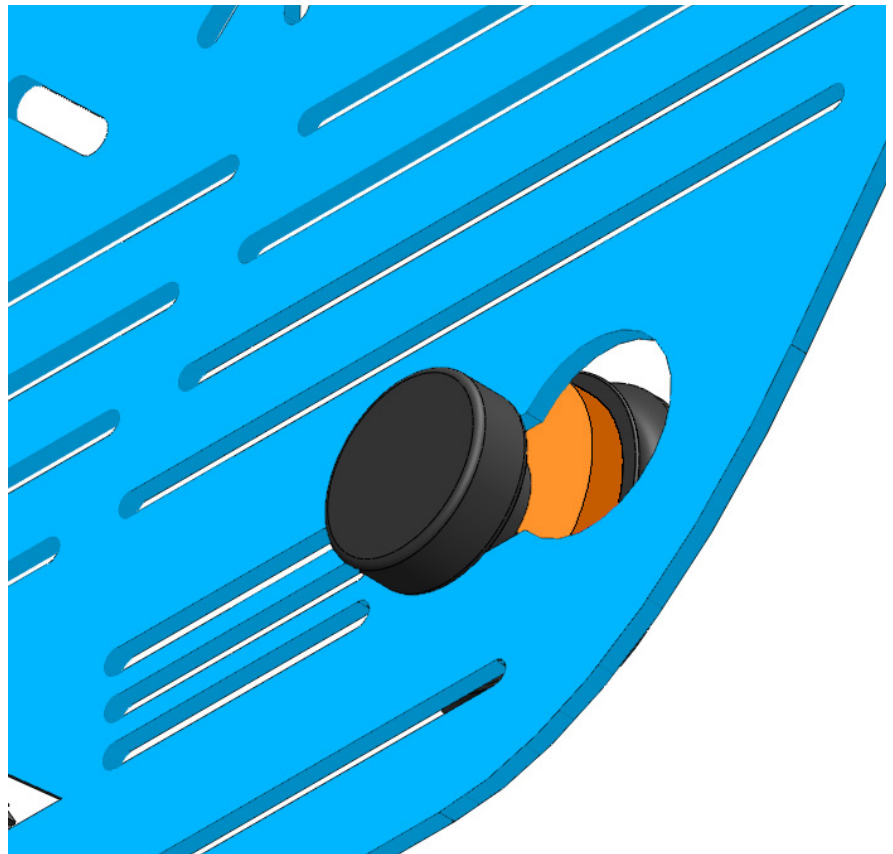
Install 04

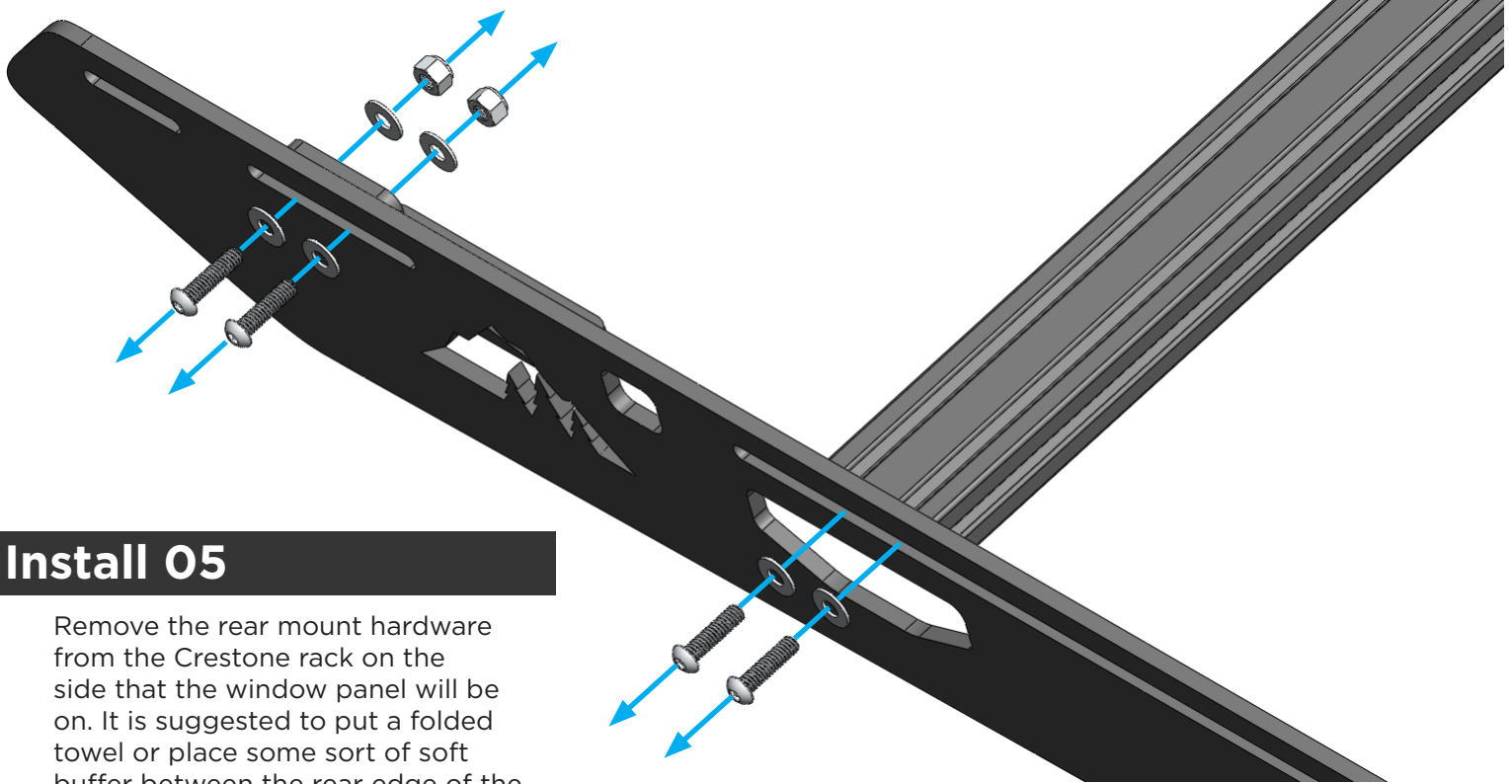
Required Components:

- 1 Suction cup
- 1 Rubber spacer

Wrap the second rubber spacer around the neck of the remaining suction cup. The **rubber spacer** and suction cup both sit on the back side of the **window panel**. Insert the suction cup handle-first through the back side of the window panel, then slide it to the left into the smaller slot.

When installed correctly, only the handle of the suction cup should sit on the front face of the window panel.





Install 05

Remove the rear mount hardware from the Crestone rack on the side that the window panel will be on. It is suggested to put a folded towel or place some sort of soft buffer between the rear edge of the sideplate and the vehicle's paint, as the rack will droop once this hardware is removed. Having another person to hold the sideplate up is the best option.

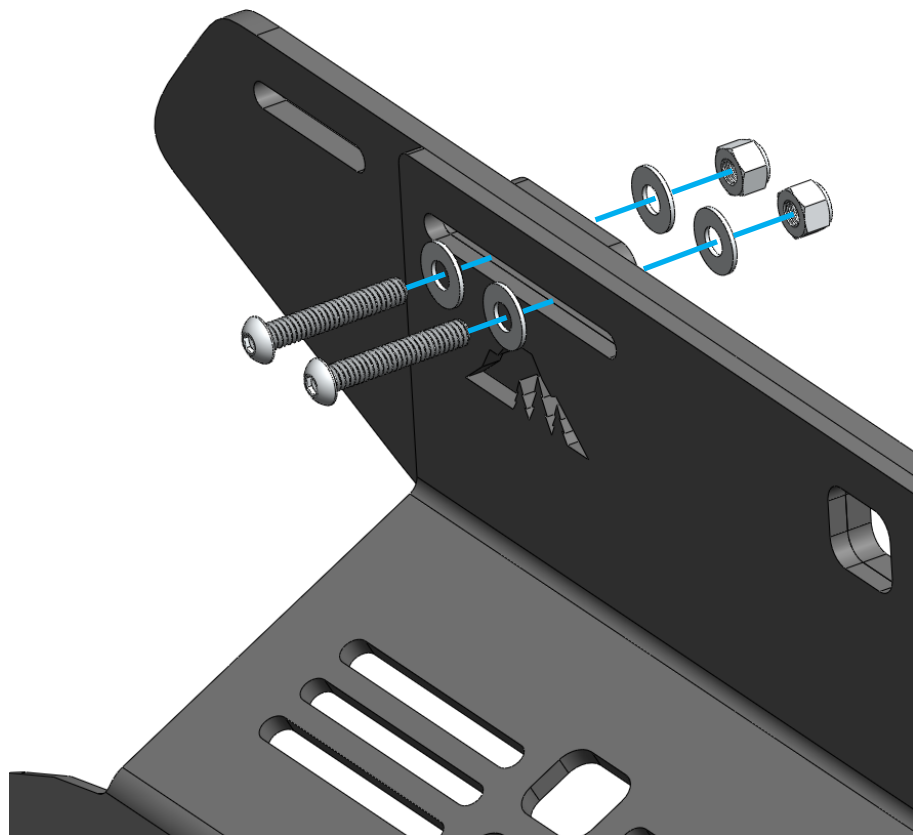
Remove any hardware that fastens a crossbar to the sideplate if there are any crossbars along the slot that the window panel will cover.

Install 06

Wipe down the glass of the window with soap and water to improve the adhesion of the suction cups.

Line the window panel up with the rear window and the sideplate. The slots and tie-down point in the window panel should match the same slots in the sideplate. Once in position, compress the suction cups into the window to help support the window panel.

Replace the 1/4"-20 x 1" socket button removed from the Crestone rear mount with the 1/4"-20 x 1.25" socket buttons supplied with the panel, and reusing the four washers and two nylock nuts that came off originally. The additional length in the fastener accounts for the additional thickness of the window panel against the sideplate.



Install 07

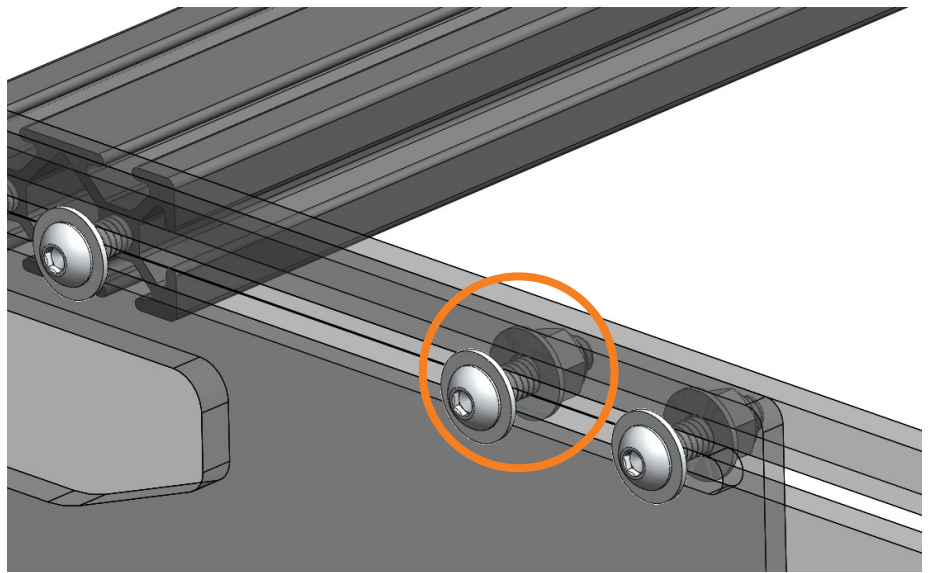
Required Components:

2 1/4"-20 x 1" Socket Button

2 1/4"-20 Nylock nut

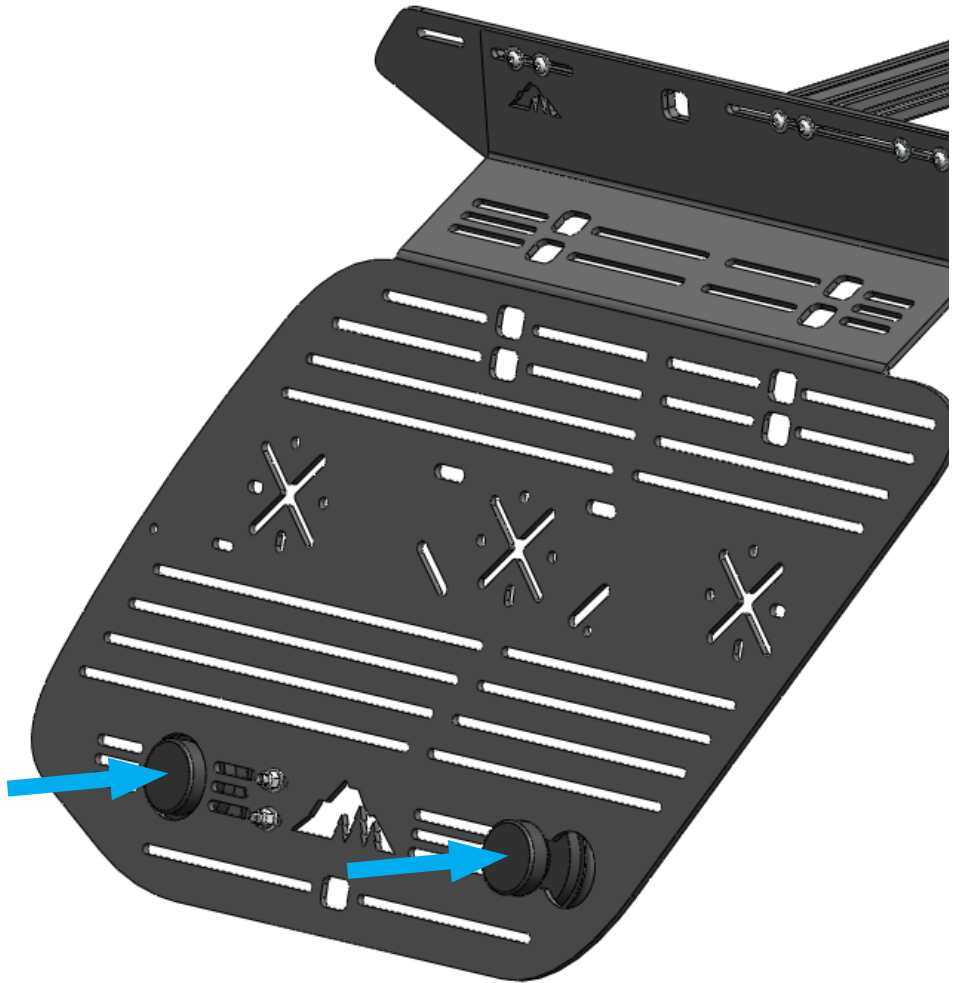
4 1/4" Flat washer

Re-install any crossbar hardware that was removed in install step 05 through the window panel slot. Further solidify the connection between the roof rack and the window panel using the supplied 1" socket buttons, nylock nuts, and flat washers along the remaining length of the slot. Space them out evenly for optimal distribution of the load.



Install 07

If the suction cups have become detached during the install process, [re-apply pressure](#) on the handles to get them to stick. They should not come off with a tug on the lower edge of the window panel. If they do, wipe the window and suction cup surfaces down with soap and water.





EXPLORE.

All products built and designed by Sherpa Equipment Company are intended for off-road use and should be assembled, installed, and used according to Sherpa Equipment Company's recommendations. Sherpa Equipment Companies products should be used safely with good judgment towards others and surroundings.

By installing Sherpa Equipment Companies products on your vehicle you assume all liability. Sherpa Equipment Company will not be held liable for damages or loss associated with the installation or use of its products. It is recommended that you inspect your roof rack within the first 100 miles of installation and every 500 miles after.