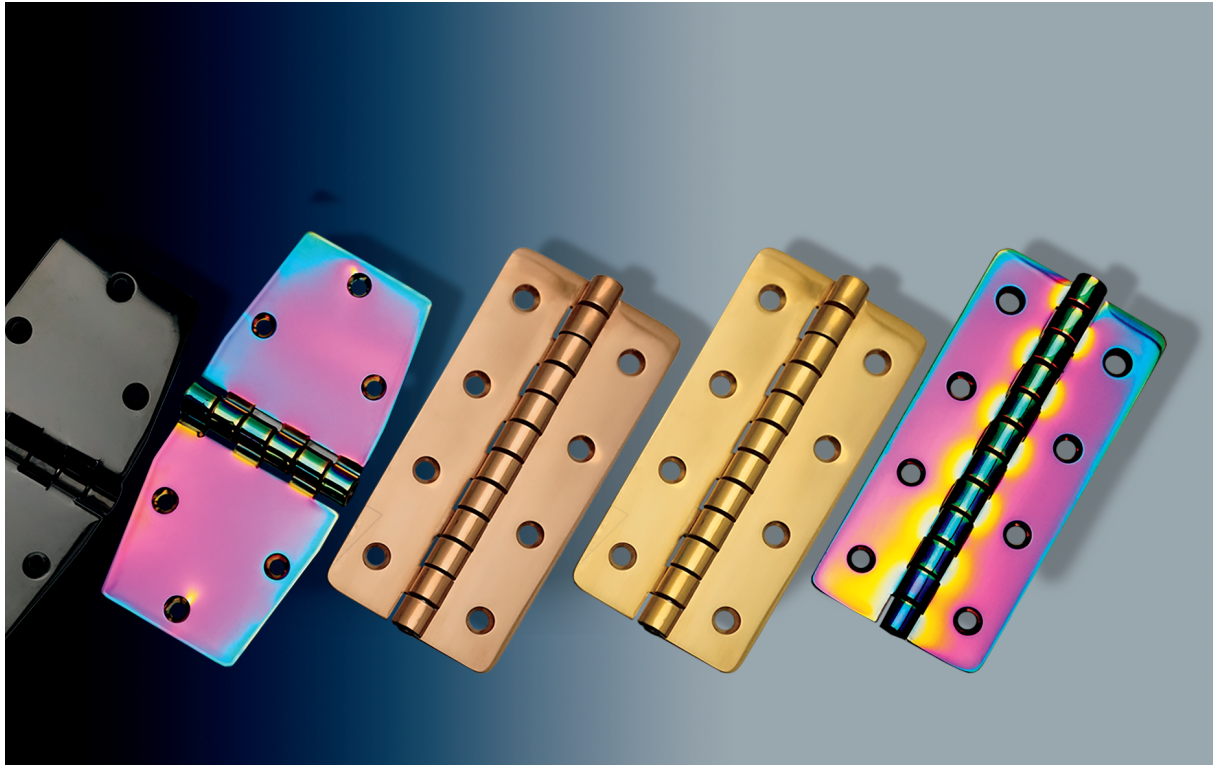




JEF CO
MFG.



ABOUT US

Our Commitment to Quality: At the core of our operations is a relentless commitment to quality. We believe that superior craftsmanship and attention to detail are vital in delivering products that exceed customer expectations. That's why we employ a team of skilled technicians who utilize advanced manufacturing techniques and cutting-edge technology to ensure the highest level of precision and durability in every hinge we produce.

Innovative Solutions: We understand that each industry has unique needs and challenges. That's why we continuously innovate and develop custom hinge solutions to meet the evolving demands of our customers. Our team works closely with clients to design hinges that are tailored to their specific applications, offering enhanced functionality, efficiency, and reliability.

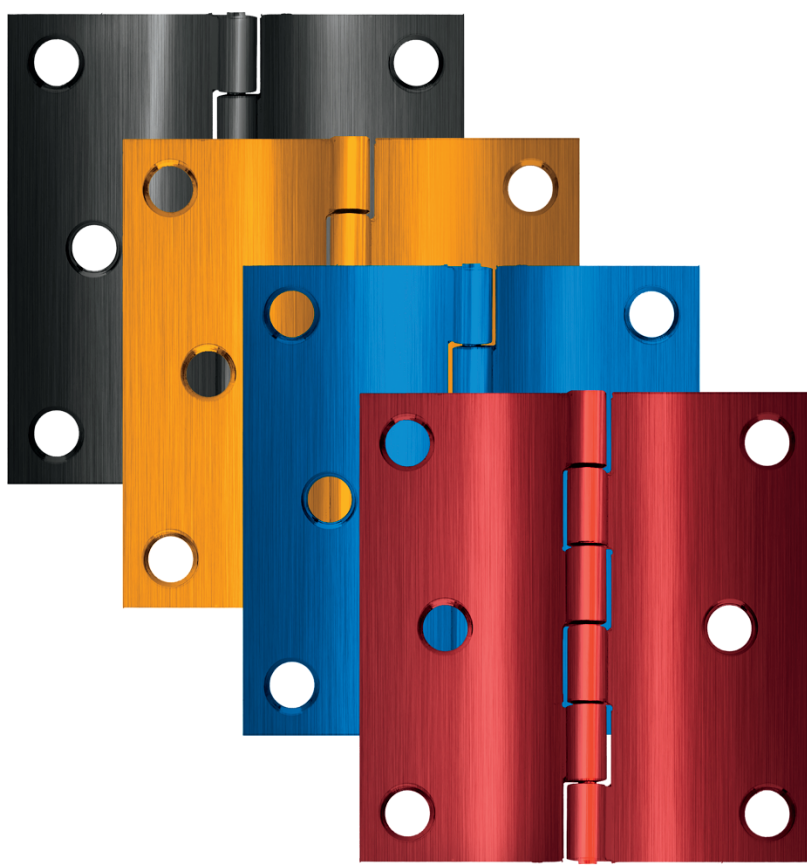
Diverse Product Range: Our extensive product catalog encompasses a wide variety of hinges, including concealed hinges, continuous hinges, strap hinges, tee hinges, spring-loaded hinges, and more. From residential and commercial applications to heavy-duty industrial projects, our hinges provide the strength, performance, and versatility needed to support a wide range of doors, gates, cabinets, and machinery.

Customer-Centric Approach: At Jefco Manufacturing, we value our relationships with customers above all else. We strive to understand their unique requirements and challenges, allowing us to deliver tailored solutions that meet their exact specifications. Our dedicated customer support team is always available to provide expert guidance and assistance throughout the entire process, ensuring a seamless and satisfying experience.

Sustainability and Responsibility: We are committed to conducting our business in an environmentally responsible manner. From using sustainable materials to implementing efficient manufacturing processes, we aim to minimize our ecological footprint and contribute to a greener future.



When you choose Jefco Manufacturing, you partner with a company that is driven by a passion for excellence, innovation, and customer satisfaction. Experience the reliability, quality, and personalized service that have made us an industry leader. Visit our website or contact our team today to discover how Jefco Manufacturing can fulfill your hinge and engineering solution needs.



Butt Hinges

What are Butt Hinges?

- Butt hinges are designed for various applications, including doors, cabinets, furniture, and enclosures. Their primary function is to provide smooth and reliable rotational movement between two objects, such as a door and its frame. These hinges offer stability and security, ensuring proper alignment and support for heavy loads.

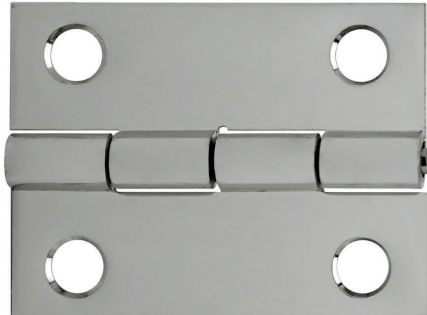
Setting the Standard

- Crafted from premium-grade materials, including stainless steel and durable alloys, these hinges exhibit exceptional strength and corrosion resistance, making them suitable for both indoor and outdoor applications.
- One of the unique selling points of Jefco Manufacturing's butt hinges is their extensive range of options. Whether you require standard or heavy-duty hinges, different sizes, or specific finishes, our catalog offers a wide selection to meet your precise needs. Our team can even provide custom hinge solutions, tailored to your project requirements.

Unleash the Power of Precision

- Each hinge is crafted with meticulous craftsmanship, ensuring smooth and seamless operation.
- The hinge pins are precisely machined for optimal rotational movement, while the leaf thickness is carefully designed to provide the right balance of strength and flexibility.
- Installation is made easy with Jefco Manufacturing's butt hinges. They feature pre-drilled countersunk holes, allowing for simple and secure mounting using screws or rivets. The versatility of these hinges extends to both new installations and retrofit projects.

BUTT HINGES



10072

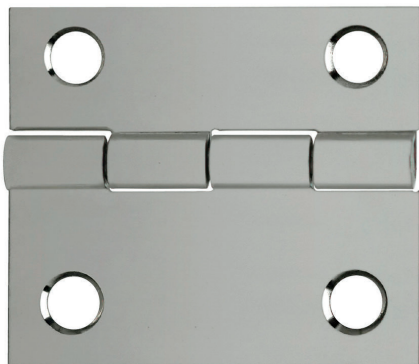
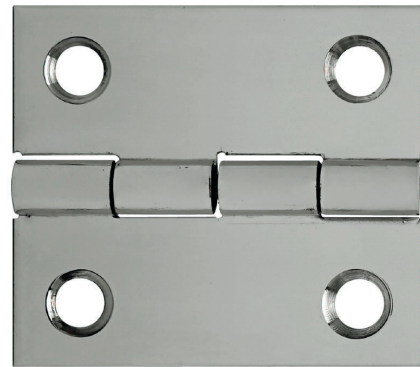
SSSB-60150-200 HC

Material- Stainless Steel
Material Thickness: - 0.060"/16 GA
Open Width - 1.50"
Length - 2.00"
Pin Diameter - 0.125"
Countersunk Holes

10073

SSB-60175-200 HC

Material - Stainless Steel
Material Thickness: - 0.060"/16 GA
Open Width - 1.75"
Length - 2.00"
Pin Diameter - 0.125"
Countersunk Holes



12682

SSB-60175-200 HC

Material - Stainless Steel
Material Thickness: - 0.060"/16 GA
Open Width - 1.75"
Length - 2.00"
Pin Diameter - 0.125"
Countersunk Holes
Uneven Leaves

10078

SSTB-60275-150 HC

Material - Stainless Steel
Material Thickness: - 0.060"/16 GA
Open Width - 2.00"
Length - 1.50"
Pin Diameter - 0.125"
Countersunk Holes
Tapered Edges



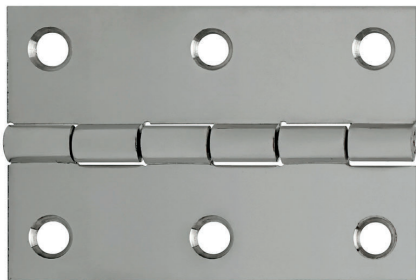
BUTT HINGES



10074

SSB-60200-200 HC

Material - Stainless Steel
Material Thickness: - 0.060"/16 GA
Open Width - 2.00"
Length - 2.00"
Pin Diameter - 0.125"
Countersunk Holes



10075

SSB-60200-300 HC

Material - Stainless Steel
Material Thickness: - 0.060"/16 GA
Open Width - 2.00"
Length - 3.00"
Pin Diameter - 0.125"
Countersunk Holes



10082

SSOB-60250-200 HC

Material - Stainless Steel
Material Thickness: - 0.060"/16 GA
Open Width - 2.50"
Length - 2.00"
Offset - 0.375"
Pin Diameter - 0.125"
Countersunk Holes

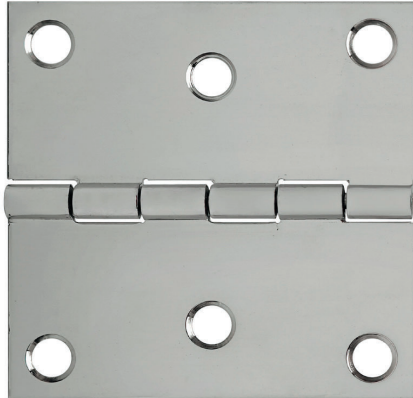


10083

SSOB-60275-200 HC

Material - Stainless Steel
Material Thickness: - 0.060"/16 GA
Open Width - 2.75"
Length - 2.00"
Pin Diameter - 0.125"
Offset - 0.375"
Countersunk Holes

BUTT HINGES



10076

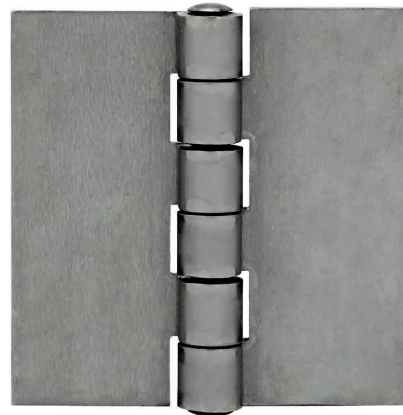
SSB-60300-300 HC

Material - Stainless Steel
Material Thickness: - 0.060"/16 GA
Open Width - 3.00"
Length - 3.00"
Pin Diameter - 0.125"
Countersunk Holes

10772

SSB-120300-300 B

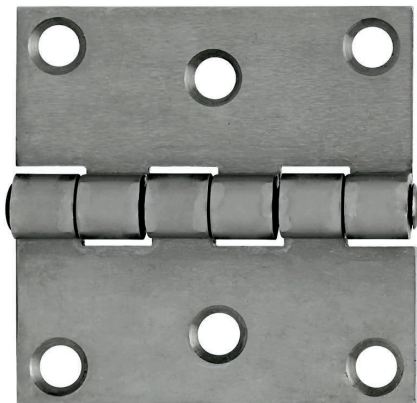
Material - Stainless Steel
Material Thickness: - 0.120"/11 GA
Open Width - 3.00"
Length - 3.00"
Pin Diameter - 0.250"
Blank Hinge



10817

Product Code: 123 456

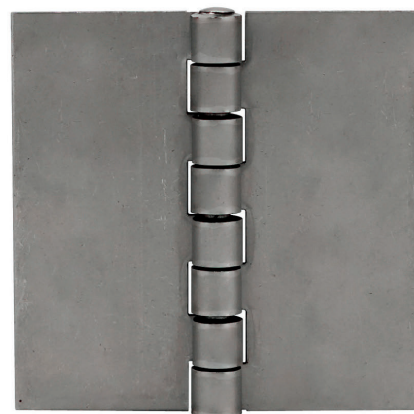
Material - Stainless Steel
Material Thickness: - 0.120"/11 GA
Open Width - 3.00"
Length - 3.00"
Pin Diameter - 0.250"
Countersunk Holes



10773

Product Code: 123 456

Material - Stainless Steel
Material Thickness: - 0.120"/11 GA
Open Width - 4.00"
Length - 4.00"
Pin Diameter - 0.250"
Blank Hinge



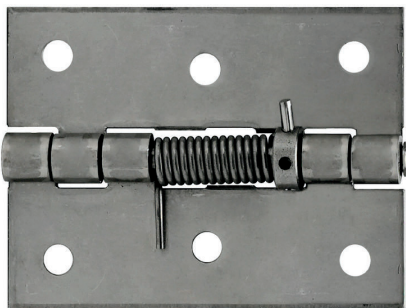


SPRING LOADED HINGES



Specifically engineered to provide automatic closing and self-latching capabilities, making these spring loaded hinges ideal for doors, gates, cabinets, and enclosures. With adjustable tension settings, these hinges allow precise control over closing force, accommodating different weights and requirements. The automatic closing action enhances efficiency, improving workflow and ensuring compliance with safety regulations. Spring loaded hinges are built to withstand heavy use and demanding environments. They provide long-lasting performance and require minimal maintenance, enhancing overall productivity and cost-effectiveness.

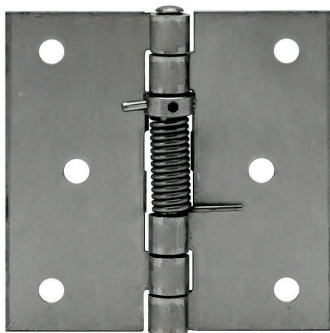
10935



SSSB-120300-400 P

Material - Stainless Steel
Material Thickness: - 0.120"/11 GA
Open Width - 3.00"
Length - 4.00"
Pin Diameter - 0.250"
Punched Holes

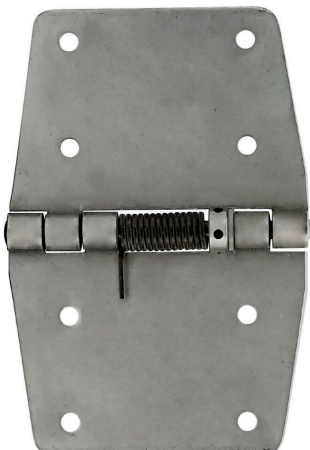
10936



SSSB-120400-400 P

Material - Stainless Steel
Material Thickness: - 0.120"/11 GA
Open Width - 4.00"
Length - 4.00"
Pin Diameter - 0.250"
Blank Hinge

10976



SSTSB-120600-400 P

Material - Stainless Steel
Material Thickness: - 0.120"/11 GA
Open Width - 6.00"
Length - 4.00"
Pin Diameter - 0.250"
Punched Holes



Strap and Tee Hinges

Seamless Support

- Strap and tee hinges are specifically designed to provide strong and secure connections for heavy-duty doors, gates, cabinets, and more. They excel in commercial and industrial settings, where durability and stability are paramount.
- These hinges ensure smooth and effortless opening and closing of doors, while maintaining a secure and reliable hold.

Defining Durability and Design

- Designed with precision and attention to detail, these hinges are built to withstand demanding environments and heavy use. They are constructed from high-quality materials such as stainless steel and durable alloys, ensuring exceptional strength, corrosion resistance, and longevity.
- They feature pre-drilled holes and come with all the necessary mounting hardware, allowing for quick and hassle-free setup.
- These hinges require minimal maintenance, ensuring ongoing efficiency and reliability.

Stand Out from the Rest

- Our Strap and Tee hinges offer versatility in application, adapting seamlessly to various architectural styles and design preferences.
- Jefco Manufacturing prides itself on its commitment to excellence in craftsmanship. Our strap and tee hinges undergo meticulous manufacturing processes, resulting in hinges of superior quality. Attention to detail and rigorous quality control measures ensure that every hinge meets the highest standards. By using Jefco Manufacturing's hinges, you showcase your dedication to quality and professionalism, setting yourself apart from competitors.



STRAP HINGES



10084

SST-60200-150 HC

Material - Stainless Steel
Material Thickness: - 0.060"/16 GA
Strap Leaf Width - 2.00"
Length - 1.50"
Pin Diameter - 0.125"
Counter Sunk Holes



10085

SST-60300-150 HC

Material - Stainless Steel
Material Thickness: - 0.060"/16 GA
Strap Leaf Width - 3.00"
Length - 1.50"
Pin Diameter - 0.125"
Countersunk Holes



10081

SSS-60600-150 HC

Material - Stainless Steel
Material Thickness: - 0.060"/16 GA
Open Width - 6.00"
Strap Width - 3.00"
Length - 1.50"
Pin Diameter - 0.125"
Countersunk Holes



10090

RSS-60400-100 HC

Material - Stainless Steel
Material Thickness: - 0.060"/16 GA
Open Width - 4.00"
Strap Width - 2.00"
Length - 1.00"
Pin Diameter - 0.250"
Rounded Corners, Countersunk Holes

STRAP HINGES



11595

SSS-90400-200 HC

Material - Stainless Steel
Material Thickness: - 0.090"/13 GA
Open Width - 4.00"
Strap Width - 2.00"
Length - 2.00"
Pin Diameter - 0.250"
Countersunk Holes

10831

SSS-120600-250 B

Material - Stainless Steel
Material Thickness: - 0.120"/11 GA
Open Width - 6.00"
Strap Width - 3.00"
Length - 2.50"
Pin Diameter - 0.375"
Blank Hinge



10834

SSS-120600-250 HC

Material - Stainless Steel
Material Thickness: - 0.120"/11 GA
Open Width - 6.00"
Strap Width - 3.00"
Length - 2.50"
Pin Diameter - 0.375"
Countersunk Holes



STRAP HINGES



10835

SSS-120800-300 HC

Material - Stainless Steel
Material Thickness: - 0.120"/11 GA
Open Width - 8.00"
Strap Width - 4.00"
Length - 5.00"
Pin Diameter - 0.375"
Countersunk Holes



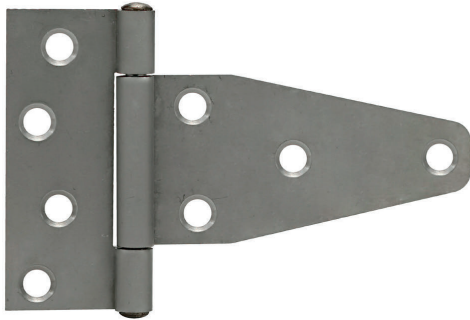
10836

SSS-1201000-350 HC

Material - Stainless Steel
Material Thickness: - 0.120"/11 GA
Open Width - 10.00"
Strap Width - 5.00"
Length - 3.50"
Pin Diameter - 0.375"
Countersunk Holes



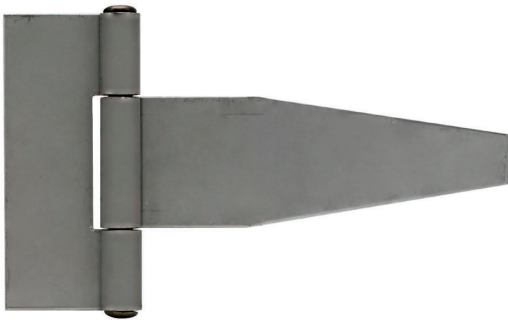
TEE HINGES



11596

SST-90400-350 HC

Material - Stainless Steel
Material Thickness: - 0.090"/13 GA
Open Width - 5.50"
Strap Width - 4.00"
Length - 3.50"
Pin Diameter - 0.250"
Flush Mount, Countersunk Holes



10840

SST-120600-450 B

Material - Stainless Steel
Material Thickness: - 0.120"/11 GA
Open Width - 7.75"
Strap Width - 6.00"
Length - 4.50"
Pin Diameter - 0.375"
Flush Mount, Blank Hinge



10843

SST-120600-450 HC

Material - Stainless Steel
Material Thickness: - 0.120"/11 GA
Open Width - 7.75"
Strap Width - 6.00"
Length - 4.50"
Pin Diameter - 0.375"
Flush Mount, Countersunk Holes



10844

SST-120800-550 HC

Material - Stainless Steel
Material Thickness: - 0.120"/11 GA
Open Width - 10.25"
Strap Width - 8.00"
Length - 5.50"
Pin Diameter - 0.375"
Flush Mount, Countersunk Holes



10845

SST-1201000-700 HC

Material - Stainless Steel
Material Thickness: - 0.120"/11 GA
Open Width - 12.25"
Strap Width - 10.00"
Length - 7.00"
Pin Diameter - 0.375"
Flush Mount, Countersunk Holes



CONCEALED HINGES

Jefco Manufacturing's high-quality concealed hinges, designed to revolutionize your industrial projects with their exceptional functionality and sleek aesthetics.

What are Concealed Hinges?

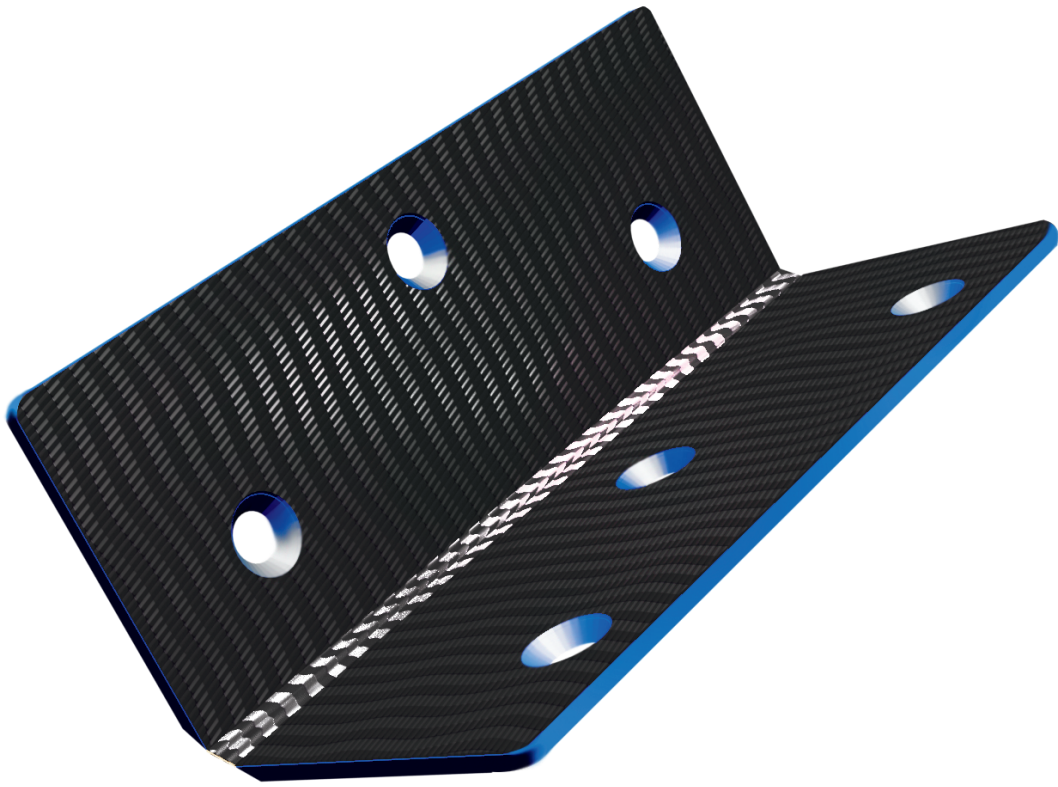
Concealed hinges are an indispensable solution for various applications, offering a seamless and sophisticated alternative to traditional exposed hinges. These versatile hinges are specifically engineered to provide a discreet and polished appearance, making them ideal for cabinets, furniture, architectural fixtures, and more. They effortlessly blend into the design, ensuring a clean and uncluttered look while allowing for smooth and effortless operation.

Benefits of Using Concealed Hinges

By incorporating concealed hinges into your projects, you can enjoy a multitude of benefits. The seamless integration of these hinges eliminates unsightly hardware, providing a streamlined and modern aesthetic that enhances the overall appearance of your products. Their concealed nature also adds an extra layer of security, making them an excellent choice for applications where tamper resistance is essential.

Jefco's Advantage

One of the standout features of Jefco Manufacturing's concealed hinges is their exceptional durability and reliability. Crafted from premium materials, these hinges are built to withstand the test of time, offering unparalleled performance even in demanding environments. Their robust construction ensures that doors and panels remain securely in place, providing peace of mind and enhancing overall safety.



CARBON FIBER HINGES

Elevate your designs with industry-leading innovation and unlock new horizons in industrial excellence.

Revolutionary Materials

- Carbon fiber hinges utilize a combination of high-strength carbon fiber and Kevlar, resulting in an incredibly robust and lightweight solution.
- The Kevlar layer provides added protection and durability, coated with a 3M UV-resistant product to ensure long-lasting performance in even the harshest environments.
- The addition of multiple Kevlar layers is possible, allowing for further reinforcement and enhanced strength, with options for up to 5 layers. Additionally, fiberglass leaf reinforcement ensures optimal structural integrity, providing confidence in the hinge's ability to withstand demanding conditions.

Limitless Adaptability

- Excellent corrosion resistance, making them suitable for both indoor and outdoor applications. Their resistance to chemicals and UV exposure guarantees long-term reliability and minimal maintenance, even in harsh conditions.
- Mounting options for our carbon fiber hinges are diverse, offering convenience and flexibility during installation. Whether you prefer adhesives, mechanical fasteners, VHB tapes, or bonding the hinges directly into the application, Jefco Manufacturing has you covered. This adaptability makes integrating carbon fiber hinges into your projects seamless and hassle-free.

Unparalleled Strength

- With an impressive weight-bearing capacity of up to 330 lb. (150 kg) or more over a 2-inch (50 mm) length, these hinges can handle heavy loads without compromising functionality. Rigorously tested to withstand over 1 million cycles with no degradation, they are built to last and provide consistent performance over time.
- Their lightweight construction reduces overall weight and increases efficiency, making them ideal for applications where weight savings are crucial. The high strength-to-weight ratio ensures optimal performance without sacrificing durability.



ALUMINUM CONTINUOUS HINGES



Jefco Manufacturing proudly presents its exceptional collection of aluminum continuous hinges, designed to revolutionize industrial applications with their unwavering durability and versatility. These hinges are the go-to choice for a wide range of projects, offering seamless functionality and unmatched load-bearing capabilities.

Aluminum continuous hinges find their applications in various industrial sectors, including commercial, manufacturing, and architectural industries. They are ideal for heavy-duty doors, cabinets, enclosures, and more. These hinges provide continuous support along the entire length of the door or panel, minimizing stress concentration points and ensuring uniform weight distribution.

Crafted from premium-grade aluminum, these hinges offer remarkable load-bearing capacity while remaining lightweight. This not only facilitates smooth operation but also reduces strain on the surrounding structure, enhancing overall durability.

Installing Jefco Manufacturing's aluminum continuous hinges is a breeze. With flexible mounting options, including welding, fasteners, or adhesive bonding, these hinges offer convenience and versatility during installation.



Material Thickness - 0.035"/21 GA

OPEN WIDTH	KNUCKLE LENGTH	PIN DIA.	FEATURES	STOCK NUMBER	DESCRIPTION
0.075"	0.250"	0.086"	Blank	10759	A-30575-086-250 X 72" B

Material Thickness - 0.040"/19 GA

OPEN WIDTH	KNUCKLE LENGTH	PIN DIA.	FEATURES	STOCK NUMBER	DESCRIPTION
1.060"	0.500"	0.093"	Blank	10001	A-40106-093-5 X 72" B
			Punched Holes	12512	A-40106-093-5 X 72" P
			Staggard Punched Holes	11579	A-40106-093-5 X 72" P
1.250"			Blank	10002	A-40125-093-5 X 72" B
			Punched Holes	12513	A-40125-093-5 X 72" P
			Staggard Punched Holes	11580	A-40125-093-5 X 72" P
1.500"			Blank	10003	A-40150-093-5 X 72" B
			Staggard Punched Holes	12514	A-40150-093-5 X 72" P
2.000"			Staggard Punched Holes	11582	A-40200-093-5 X 72" P
		Blank	10004	A-40200-093-5 X 72" B	
		Punched Holes	12515	A-40200-093-5 X 72" P	
		0.125"	Punched Holes	12516	A-40200-125-5 X 72" P



ALUMINUM CONTINUOUS HINGES



Material Thickness - 0.050"/18 GA

OPEN WIDTH	KNUCKLE LENGTH	PIN DIA.	FEATURES	STOCK NUMBER	DESCRIPTION
1.500"	0.500"	0.125"	Blank	10005	A-50150-125-5 X 72" B
2.000"				10006	A-50200-125-5 X 72" B
3.000"				10007	A-50300-125-5 X 72" B

Material Thickness - 0.060"/16 GA

OPEN WIDTH	KNUCKLE LENGTH	PIN DIA.	FEATURES	STOCK NUMBER	DESCRIPTION
1.060"	0.500"	0.125"	Blank	10459	A-60106-125-5 X 72" B
1.500"	0.500"	0.125"		10008	A-60150-125-5 X 72" B
2.000"	0.500"	0.125"		10009	A-60200-125-5 X 72" B
3.000"	0.500"	0.125"		10011	A-60300-125-5 X 72" B
	1.000"	0.187"		10026	A-60300-187-1 X 72" B
3.500"	0.500"	0.125"		10012	A-60350-125-5 X 72" B
4.000"	0.500"	0.125"		10013	A-60400-125-5 X 72" B
	1.000"	0.187"		10028	A-60400-187-1 X 72" B
4.500"	0.500"	0.125"		10014	A-60450-125-5 X 72" B



ALUMINUM CONTINUOUS HINGES



Material Thickness - 0.0750"/14 GA

OPEN WIDTH	KNUCKLE LENGTH	PIN DIA.	FEATURES	STOCK NUMBER	DESCRIPTION
2.000"	0.500"	0.187"	Blank	10212	A-75200-187-5 X 72" B
	1.000"	0.250"		10041	A-75200-250-1 X 72" B
2.500"	1.000"	0.187"		10033	A-75250-187-1 X 72" B
3.000"	1.000"	0.250"		10043	A-75300-250-1 X 72" B
3.500"	1.000"	0.250"		10044	A-75350-250-1 X 72" B
4.000"	1.000"	0.250"		10045	A-75400-250-1 X 72" B

Material Thickness - 0.900"/13 GA

OPEN WIDTH	KNUCKLE LENGTH	PIN DIA.	FEATURES	STOCK NUMBER	DESCRIPTION
2.000"	1.000"	0.250"	Blank	10048	A-90200-250-1 X 72" B
2.500"				12416	A-90250-250-1 X 72" B
3.000"				10049	A-90300-250-1 X 72" B

Material Thickness - 0.120"/11 GA

OPEN WIDTH	KNUCKLE LENGTH	PIN DIA.	FEATURES	STOCK NUMBER	DESCRIPTION
3.000"	2.000"	0.375"	Blank	10054	A-120300-375-2 X 72" B
4.000"				10055	A-120400-375-2 X 72" B



STAINLESS STEEL CONTINUOUS HINGES



Our Stainless steel continuous hinges are specifically designed for heavy-duty doors, enclosures, cabinets, and more. These hinges provide continuous support along the entire length of the door or panel, ensuring uniform weight distribution and minimizing stress concentration points.

Crafted from high-quality stainless steel, these hinges offer excellent corrosion resistance, making them ideal for both interior and exterior applications. They can withstand harsh environments, ensuring long-lasting performance and minimal maintenance.

Stainless steel continuous hinges provide a sleek and polished aesthetic. They seamlessly integrate into various industrial settings, adding a touch of sophistication to any project.

Jefco Manufacturing's stainless steel continuous hinges are engineered with precision to ensure smooth and effortless operation. They offer exceptional load-bearing capacity and are built to withstand heavy use. With their reliable performance and sturdy construction, these hinges provide peace of mind and enhance overall safety.



Material Thickness - 0.040"/19 GA

OPEN WIDTH	KNUCKLE LENGTH	PIN DIA.	FEATURES	STOCK NUMBER	DESCRIPTION
1.060"	0.500"	0.930"	BLANK	10094	SS-40106-093-5 X 72" B
1.500"				10096	SS-40150-093-5 X 72" B

Material Thickness - 0.050"/18 GA

OPEN WIDTH	KNUCKLE LENGTH	PIN DIA.	FEATURES	STOCK NUMBER	DESCRIPTION
3.000"	0.500"	0.125"	BLANK	10100	SS-50300-125-5 X 72" B

Material Thickness - 0.060"/16 GA

OPEN WIDTH	KNUCKLE LENGTH	PIN DIA.	FEATURES	STOCK NUMBER	DESCRIPTION
1.500"	1.000"	0.125"	BLANK	10108	SS-60150-125-1 X 72" B
		0.187"		10116	SS-60150-187-1 X 72" B
2.000"		0.125"		10109	SS-60200-125-1 X 72" B
2.500"		0.187"		10117	SS-60250-187-1 X 72" B



STAINLESS STEEL CONTINUOUS HINGES



Material Thickness - 0.0750"/14 GA

OPEN WIDTH	NUCKLE LENGTH	PIN DIA.	FEATURES	STOCK NUMBER	DESCRIPTION
1.500"	1.000"	0.250"	BLANK	10443	SS-75150-250-1 X 72" B
2.000"	1.000"	0.250"		10134	SS-75200-250-1 X 72" B
3.000"	1.000"	0.187"		10127	SS-75300-187-1 X 72" B
	1.000"	0.250"		10136	SS-75300-250-1 X 72" B
3.500"	1.000"	0.250"		10137	SS-75350-250-1 X 72" B
4.000"	1.000"	0.187"		10129	SS-75400-187-1 X 72" B
4.000"	1.000"	0.250"		10138	SS-75400-250-1 X 72" B

Material Thickness - 0.090"/13 GA

OPEN WIDTH	NUCKLE LENGTH	PIN DIA.	FEATURES	STOCK NUMBER	DESCRIPTION
2.000"	1.000"	0.250"	BLANK	10141	SS-90200-250-1 X 72" B
3.000"				10142	SS-90300-250-1 X 72" B

Material Thickness - 0.120"/11 GA

OPEN WIDTH	NUCKLE LENGTH	PIN DIA.	FEATURES	STOCK NUMBER	DESCRIPTION
3.000"	2.000"	0.375"	BLANK	10148	SS-120300-375-2 X 72" B
4.000"				10149	SS-120400-375-2 X 72" B



BRIGHT ANNEALED CONTINUOUS HINGES



Your paragraph text



Material Thickness - 0.040"/19 GA

OPEN WIDTH	KNUCKLE LENGTH	PIN DIA.	FEATURES	STOCK NUMBER	DESCRIPTION
1.060"	0.500"	0.093"	BLANK	10059	BASS-40106 X 72" B
			COINED COUNTERSUNK	10063	BASS-40106 X 72" PC
			TRUE COUNTERSUNK	10063TC	BASS-40106 X 72" PTC
1.250"			BLANK	10060	BASS-40125 X 72" B
			COINED COUNTERSUNK	10064	BASS-40125 X 72" PC
			TRUE COUNTERSUNK	10064TC	BASS-40125 X 72" PTC
1.500"			BLANK	10061	BASS-40150 X 72" B
			COINED COUNTERSUNK	10065	BASS-40150 X 72" PC
			TRUE COUNTERSUNK	10065TC	BASS-40150 X 72" PTC
2.000"			BLANK	10062	BASS-40200 X 72" B
			COINED COUNTERSUNK	10066	BASS-40200 X 72" PC
			TRUE COUNTERSUNK	10066TC	BASS-40200 X 72" PTC



BRIGHT ANNEALED CONTINUOUS HINGES



Material Thickness - 0.060"/19 GA

OPEN WIDTH	KNUCKLE LENGTH	PIN DIA.	FEATURES	STOCK NUMBER	DESCRIPTION
1.500"	0.500"	0.125"	BLANK	11452	BASS-60150-125-5 X 72" B
			COINED COUNTERSUNK	11880	BASS-60150-125-5 X 72" PC
2.000"			BLANK	11453	BASS-60200-125-5 X 72" B
			COINED COUNTERSUNK	11881	BASS-60200-125-5 X 72" PC
2.500"			BLANK	11454	BASS-60250-125-5 X 72" B
3.000"			BLANK	11455	BASS-60300-125-5 X 72" B
			COINED COUNTERSUNK	11882	BASS-60300-125-5 X 72" B
			BLANK	11467	BASS-60400-125-5 X 72" B
4.500"			BLANK	11483	BASS-60450-125-5 X 72" B