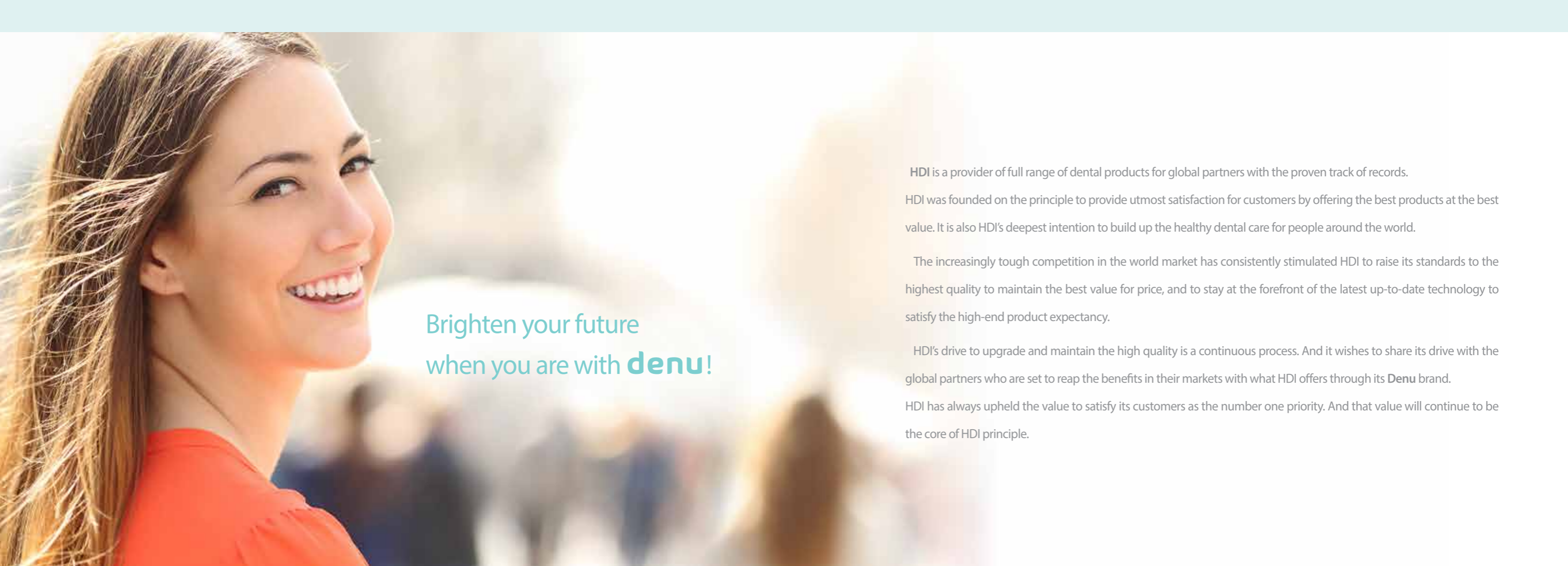


*Brighten
Your Future!*

*Brighten
Your Future!*



Brighten your future
when you are with **denu!**

HDI is a provider of full range of dental products for global partners with the proven track of records.

HDI was founded on the principle to provide utmost satisfaction for customers by offering the best products at the best value. It is also HDI's deepest intention to build up the healthy dental care for people around the world.

The increasingly tough competition in the world market has consistently stimulated HDI to raise its standards to the highest quality to maintain the best value for price, and to stay at the forefront of the latest up-to-date technology to satisfy the high-end product expectancy.

HDI's drive to upgrade and maintain the high quality is a continuous process. And it wishes to share its drive with the global partners who are set to reap the benefits in their markets with what HDI offers through its **Denu** brand.

HDI has always upheld the value to satisfy its customers as the number one priority. And that value will continue to be the core of HDI principle.

Contents

Impression Materials

Denu Light Body	5
- Denu Light Body-Cartridge	
- Denu Light Body-Tube	
Denu Heavy Body	6
- Denu Heavy Body-Cartridge	
- Denu Heavy Body-Tube	
Denu Medium Body-Cartridge	7
Denu Putty Set	7
Denu Alginate	8
Denu Tray Cleaner	8
Denu Bite Sil	9
Denu Trans Sil	9

Retraction Materials

Retraction Cord	10
- Denu GingiCord (without hemostatic)	
- Denu GingiCord Plus (with hemostatic)	
Denu SpeedyStat(hemostatic)	10

Restorative Materials

Denu Composite Resin	12
Composite Resin Kit	12
- Kit 1, Kit 2	
Denu Flow Resin	13
Denu Temp Flow	13
Denu TemTooth	14
Denu Temp Crown	14
- Denu Temp Crown	
- Denu Temp Crown Kit	
Denu Filflow for Implant	15
Denu Block-out Resin	15

Etchant & Adhesives

Denu Etch-37	16
Denu Bond	16
Denu Temp Cement	17
- Denu Temp Cement NE	
- Denu Temp Cement EZ	
- Denu Temp Cement Implant	
Denu TemCement Cleaner	17

Core Materials, Liner, Vaseline & EDTA

Denu Dual Core	18
Denu Base Liner	18
Denu Vaseline	19
Denu EDTA Paste	19

Tooth Whitening Agents

Denu Sparkle (bleaching)	20
- Kit 1, Kit 2	
Denu Dam	20

Preventives & Pumice

Denu Fluoride Varnish	22
- Denu Clear Varnish (Premium)	
- Denu Varnish	
Denu Fluoride Gel	23
- Flavor: strawberry, orange, peach	
Denu Fluoride Gel Tray	23
- Large, Medium, Small	

Denu Seal	24
Denu Pumice Paste	24
- Denu Pumice Paste (with fluoride)	
- Denu Pumice Paste (without fluoride)	

Jig & Cap, Bridge, Partial clasp

Denu Jig Handy	25
Denu Jig Paste	25

Disinfections

Denu Suction Cleaner	26
Denu Ultra Cleaner	26

Other Products

Denu Stick Free	27
Denu Plastic Probe	27
Denu Shim Stock (with cutter)	27

DENU Impression Materials

Optimum viscosity and hydrophilicity suitable for all crown, bridge, inlay, onlay, veneer and implant impressions



CE

Impression Materials

Denu Light Body	5	Denu Medium Body-Cartridge	7
- Denu Light Body-Cartridge		Denu Putty Set	7
- Denu Light Body-Tube		Denu Alginate	8
Denu Heavy Body	6	Denu Tray Cleaner	8
- Denu Heavy Body-Cartridge		Denu Bite Sil	9
- Denu Heavy Body-Tube		Denu Trans Sil	9

Denu Light Body Cartridge / Denu Light Body Tube

■ DENU Light Body

Vinyl polysiloxane impression material

Excellent hydrophilic addition reaction silicone (A type)
Light body viscosity

Features

- Excellent dimensional stability, High tear strength and elastic recovery
- Super hydrophilicity, Easy to extrude and use



- **Normal type**
Working time: 1.30 minutes, Setting time: 4 minutes

■ Cartridge type

Suggested Applications

- Crown, bridge, inlays, onlay, veneer and implant impressions
- Denture impression, Model impression

Package

- 4 x 50 ml cartridges (cartridge: 25 ml base, 25 ml catalyst)



- **Fast type**
Working time: 1.30 minutes, Setting time: 2.30 minutes

■ Tube type

Suggested Applications

- Crown, bridge, inlays, onlay, veneer and implant impressions
- Denture impression, Model impression

Package

- 5 x 300ml tubes (150ml base, 150ml catalyst)

Selectable setting time

- Normal type (Working time: 1.30 minutes, Setting time: 4 minutes)
- **Fast type** (Working time: 1.30 minutes, Setting time: 2.30 minutes)



Denu Heavy Body Cartridge / Denu Heavy Body Tube

● DENU Heavy Body

Vinyl polysiloxane impression material

Excellent hydrophilic addition reaction silicone (A type)
Heavy body viscosity

Features

- Excellent dimensional stability, High tear strength and elastic recovery
- Super hydrophilicity, Easy to extrude and use



• Normal type

Working time: 1.30 minutes, Setting time: 4 minutes

■ Cartridge type

Suggested Applications

- Crown, bridge, inlay, onlay, veneer and implant impressions
- Denture impression, Model impression

Package

- 4 x 50 ml cartridges (cartridge: 25 ml base, 25 ml catalyst)



• Fast type

Working time: 1.30 minutes, Setting time: 2.30 minutes

■ Tube type

Suggested Applications

- Crown, bridge, inlay, onlay, veneer and implant impressions
- Denture impression, Model impression

Package

- 5 x 300ml tubes (150ml base, 150ml catalyst)

Selectable setting time

- Normal type (Working time: 1.30 minutes, Setting time: 4 minutes)
- Fast type (Working time: 1.30 minutes, Setting time: 2.30 minutes)



Denu Medium Body Cartridge / Denu Putty Set

● DENU Medium Body

Vinyl polysiloxane impression material

Excellent hydrophilic addition reaction silicone (A type)
Medium body viscosity

Features

- Excellent dimensional stability, High tear strength and elastic recovery
- Super hydrophilicity, Easy to extrude and use

■ Cartridge type

Suggested Applications

- Crown, bridge, inlay, onlay, veneer and implant impressions
- Denture impression, Model impression

Package

- 4 x 50 ml cartridges (cartridge: 25 ml base, 25 ml catalyst)



• Normal type

Working time: 1.30 minutes, Setting time: 4 minutes



• Fast type

Working time: 1.30 minutes, Setting time: 2.30 minutes

● DENU Putty Set

Vinyl polysiloxane impression material

Excellent hydrophilic addition reaction silicone (A type)
Putty body viscosity

Features

- Excellent dimensional stability, High tear strength and elastic recovery
- Super hydrophilicity, Easy to use

Selectable setting time

- Normal type (Working time: 1.30 minutes, Setting time: 4 minutes)
- Fast type (Working time: 1.30 minutes, Setting time: 2.30 minutes)

Suggested Applications

- Crown, bridge, inlays, onlay, veneer and implant impressions
- Denture impression, Model impression

Package

- 1 x 560ml (280ml base, 280ml catalyst)
- 2 x Small spoons



Denu Alginate / Denu Tray Cleaner

● DENU Alginate

Normal set

Alginate impression material

Features

- High compressive strength and tear strength
- Accurate and precise impression
- Easy and fast mixing with water
- No running down during taking impression
- Non-caking, dustless
- Easy to remove the tray without any damage

Suggested Applications

- Crown and bridge impression
- Inlay and onlay impression
- Denture impression

Package

- 500g

Normal Set

- Time in mouth: 1.30 minutes
- Total setting time: 3.30 minutes



● DENU Tray Cleaner

Cleaning powder for alginate residue on impression tray

Features

- Strong alginate-decomposing power
- Fast dissolution of powder into water
- No residue left on the tray
- Pink color added for instant identification of dissolving status

Suggested Applications

- Cleaning of alginate impression tray

Package

- 1 x 1 kg bottle
- 1 measuring spoon



Denu Bite Sil / Denu Trans Sil

● DENU Bite Sil

Fast Set

Vinyl polysiloxane bite registration material

Features

- Easy handling and placement, Outstanding accuracy
- Very hard, No distortion
- Fast working time (20 seconds) and setting time (30 seconds)
- Shore A91

Suggested Applications

- Occlusal registration

Package

- 4 x 50 ml cartridges (cartridge: 25 ml base, 25 ml catalyst)

*The mixing tip for Heavy Body (blue colored) should be used



● DENU Trans Sil

Vinyl polysiloxane impression material

Features

- Being transparent impression material, it enables to harden inside of the resin when light-cured

Suggested Applications

- Crown and bridge impression
- Inlay and onlay impression

Package

- 2 x 50 ml cartridges (cartridge: 25 ml base, 25 ml catalyst)

Apply Vaseline on the tooth and set Crown Resin after making a shape with Transparent Silicone and light cure Transparent Silicone from the outside.

*The mixing tip for Light Body without oral tip (yellow colored) should be used





Retraction Materials

Good Choice, Best Works

Denu GingiCord / Denu SpeedyStat

DENU GingiCord

Gingival retraction cord knitted with 100% cotton

Features

- Cutter, Ruler, Window for easy use
- The spool inside the bottle prevents the cord from getting tangled and enables to use the entire cord without any problems.
- Hydrophilic dye without fluorescent whitening agent
- Longer 20% than other products (300cm/118 inches)
- Quick and easy identification by different colors

5 Sizes

- Denu GingiCord #000 (black), Denu GingiCord #00 (brown), Denu GingiCord #0 (purple)
- Denu GingiCord #1 (blue), Denu GingiCord #2 (green)



Suggested Applications

- Gingival tissue displacement before taking impression

Package

- 1 x Bottle of cord (300 cm/118 inches)



* Denu Gingi Cord Plus

impregnated with aluminum chloride will be available soon.

DENU SpeedyStat

Hemostatic solution with aluminum chloride (25%)

Features

- Profound hemostasis for gingival retraction
- Fast bleeding control
- Protective against sulcus fluid contamination for optimal bonding
- No epinephrine is contained
- No adhesion between retraction cord and gingival tissue

Suggested Applications

- Hemostasis for gingival retraction

Package

- 1 x 20 ml bottle



Restorative Materials

Good Choice, Best Works

DENU Restorative Materials

Denu restorative products are made of nano hybrid fillers.



Restorative Material

Denu Composite Resin	12	Denu TemTooth	14
Composite Resin Kit	12	Denu Temp Crown	14
- Kit 1, Kit 2		- Denu Temp Crown	
Denu Flow Resin	13	- Denu Temp Crown Kit	
Denu Temp Flow	13	Denu Fil Flow for Implant	15
		Denu Block-out Resin	15

Denu Composite Resin / Composite Resin Kit

● DENU Composite Resin

Light curing universal composite resin with nano hybrid filler

Denu Composite Resin is water soluble with the optimal biocompatibility and provides the high polymerization rate, low shrinkage with enhanced flexural rigidity. Stickiness and slumping is minimized to allow excellent usability for the application of all anterior and posterior teeth restorations (Class I~V)

Shade: A0, A1, A2, A3, A3.5, B1, B2, B3, U0

Features

- High strength and excellent water soluble with optimum nano filler
 - Compressive strength 396 Mpa, Flexural strength 175 Mpa, Hardness 95 Mpa
- Excellent applicability (No stickiness and easy application)
- Manifested clearly on X-ray scan, Highly polishable
- Applicable for all anterior and posterior teeth restorations (Class I~V)
- Excellent color match with natural tooth

Suggested Applications

- Restoration for all anterior and posterior teeth sections (Class I~V)
- Restoration to fractured anterior teeth
- Replacement of amalgam for esthetic purpose
- Core build-up

Package

- 1 x 4g syringe / pack



Clinical Procedures



● DENU Composite Resin Kit



Kit 1

Composition

- Denu Composite Resin - 8 syringes
- Denu Etch-37 - 1 syringe, tips
- Denu Bond-2 bottles, 15 micro applicators

* Selectable composite resin shades (Basic shades: A0, A1, A2, A3, A3.5, B1, B2, B3, U0)



Kit 2

Composition

- Denu Composite Resin - 2 syringes
- Denu Etch-37 - 1 syringe, 2 tips
- Denu Bond-1 bottle

Denu Flow Resin / Denu Temp Flow

● DENU Flow Resin

Light cured flowable composite resin with nano hybrid filler

The flowability ensures easy applications that require details and also easy to use on tooth bridge or tooth barriers. It is also used as Base and Liner for restorations as well as for tooth bridges or tooth barriers.

Shade: A0, A1, A2, A3, A3.5, B1, B2, B3, U0

Features

- Excellent water-soluble material with optimal nano hybrid filler
 - Compressive strength 340 Mpa, Flexural strength 150 Mpa, Hardness 65 Mpa
- Excellent flow into the dental cavities by superb flowability
- Low polymerization shrinkage, Available in adhering orthodontic bracket
- Aesthetic is well considered by matching the near-natural tooth



Suggested Applications

- Cavity liner for direct restoration, Small and deep minute gap
- Sealing of pit and fissure, Base and Liner of restoratives
- Block-out of undercut

Package

- 2 x 2g syringes, disposable tips / pack

● DENU Temp Flow

Light curing semi-gel type temporary composite resin

Used as temporary filling material to isolate prepared dental cavity from the extreme oral conditions before dental prosthetic installation. Semi-gel type to be directly discharged to the dental cavity through disposable tip for easy application

Shade: Blue, Light Blue, Yellow

Features

- No easily deviation till dental prosthetic installation
- Semi-gel type temporary restoration material
- Easy to remove, No debris left after removal
- Excellent sealing ability, Adhesive to the side of dental cavities
- Easy to check debris after removal with visible color (blue, yellow)



Suggested Applications

- Temporary restoration for inlay, onlay cavity
- Temporary filling and sealing, Temporary filling for implant abutment
- Damp-blocking temporary sealing,

Package

- 5 x 2g syringes, disposable tips / pack

Denu TemTooth / Denu Temp Crown

● DENU TemTooth

Light cured resin for **making a temporary tooth** for permanent prosthesis or implant

Easy & fast fabrication of temporary tooth by hand, reducing the material loss

Shade : A1, A2, A3, A3.5, B2

Features

- Light cured resin for fabrication of temporary tooth
- **Fast fabrication (within 3 minutes) of temporary tooth by hand, reducing the material loss**
- Easy to use, Syringe type

Package

- 5 x 12ml (14g) syringes / pack
[One syringe can make approximately 20 temporary teeth or 30 temporary anterior teeth]



● DENU Temp Crown

Light cured paste-type resin for making a temporary crown

Features

- Enables to save the materials and time for fabrication of temporary crown

Package

- 2 x 2g syringes, tips



■ Denu Crown Kit

Temp Crown Kit for fabrication of temporary crown

Composition

- Denu Temp Crown : 10 x 2g syringes, tips
- Denu Trans Sil : 2 x 50ml (25ml base, 25ml catalyst) cartridges
- Denu Vaseline : 1 x 5ml syringe, tip

Apply Vaseline on the tooth and set Crown Resin after making a shape with Transparent Silicone and light cure Transparent Silicone from the outside.



Denu Fil Flow / Denu Block-out Resin

● DENU Fil Flow for implant

Flowable temporary filling material for implant abutment

Features

- Perfect sealing to prevent screw loosening
- Excellent homogenous for perfect sealing
- No shrinkage, No expansion
- Flexible enough to remove easily
- Easy to apply, No cracking, No foul odor

Suggested Applications

- Temporary filling material for **implant abutment**

Package

- 5 x 1.2ml syringes, disposable tips



● DENU Block-out Resin

Light cured semi-flowable block-out material

Features

- Low viscosity for easy flow
- Fast working , Easy to remove
- Blue color for easy visibility

Suggested Applications

- Blocks out undercuts on dies and fills in voids
- Provides reservoir space for bleaching individual trays
- Blocks out the part to be protected before sanding

Package

- 5 x 1.2ml syringes, disposable tips



Denu Etch-37 / Denu Bond

● DENU Etch-37

Semi-gel type etching agent with phosphoric acid

Features

- Optimal viscosity for precise placement and excellent control
- Excellent etching of dentin and enamel
- Provides excellent etching depth
- Perfect removal and no debris left after etching
- No leak from the syringe after use

Suggested Applications

- Etching for bonding composites, sealants or adhesives

Package

- 5 x 3ml syringes, disposable tips

Clinical Procedures



Preparation

Etching

Clean and dry



● DENU Bond

One-step for priming and bonding
5th generation bond

Features

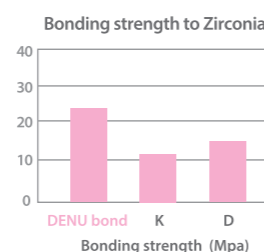
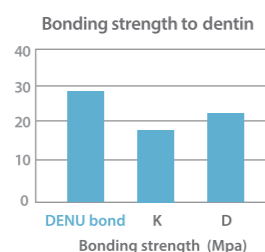
- Light cured single component dentin and enamel bonding agent
- 5th generation bond (Use Denu Bond after etching and then the resin)
- High bond strength, Long-lasting bond
- Available in bottle delivery

Suggested Applications

- All direct placements for composite resin restoration
- Bonding of composite to dentin, enamel and cementum

Package

- 2 x 5ml(5g) bottles



● DENU Temp Cement NE

Good bonding strength

Non-eugenol temporary resin cement

Features

- Good adhesive bonding strength
- Compatible with acrylic resin and plastic provisional materials
- With attachment of eco tip, minimum amount of Denu Temp Cement is used
- Due to fast curing in oral cavity, operation time is reduced
- No irritation of soft tissue

Suggested Applications

- Temporary cementing of temporary ceramic, metal or composite inlay, onlay, crown, bridge, post and screw



Package

- 2 x 5ml(13g) syringes, eco tips
- Mixing time: 10-15 seconds, Operation time: within 30 seconds
- Setting time in mouth: 3.30 minutes

● DENU Temp Cement EZ

Easy Removal

Non-eugenol temporary resin cement

Features

- **Easy to remove residual cement** on inner surface of prosthetic appliance or tooth surface
- Mixing time: 10-15 seconds, Operation time: within 40 seconds
- Setting time in mouth: 3 minutes



Package

- 2 x 5ml(13g) syringes, eco tips

● DENU Temp Cement Implant

Dual cure type Radiopaque

Non-eugenol temporary resin cement for implant

Features

- Good adhesive bonding strength
- **Dual-cured** (light-cured, self-cured)
- Compatible with acrylic resin and plastic provisional materials

Suggested Applications

- Temporary cementing of temporary prosthetic appliances for **implant**



Package

- 1 x 5ml(13g) syringes, eco tips
- Operation time: within 1.30 minutes
- Setting time in mouth: 4 minutes

● DENU TemCement Cleaner

Excellent cleaning within 10 minutes

Temporary cement solvent, Removable up to 0.3mm thick

Features

- Perfect removal of temporary cement
- Applicable for eugenol or non-eugenol temporary cement
- No damage to prosthesis
- No contamination by debris

Suggested Applications

- Removal of temporary cement

Package

- 1 x 500ml bottle
- 1 x 200ml bottle



Denu Dual Core / Denu Base Liner

Dual Cured

● DENU Dual Core

Dual-cured flowable core build-up resin

Shade: A3(yellow), Blue

Features

- Dual-cured (light cured, self cured)
- Fast and deep dual-cured (Polymerization depth for 20 seconds : 5.1mm)
- High compressive strength (310 MPa)
- High bond strength to dentin, enamel and post

Suggested Applications

- Applicable for all types of core build-ups
- Permanent restoration of tooth damage for therapeutic purpose

Package

- 2 x 5ml(10g) syringes, mixing tips, eco tips



● DENU Base Liner

Light cured cavity liner and pulp-capping material prior to placement of restorative materials

Features

- Pulp-capping material
- Protect a dental pulp for fillings, High strength
- Contains calcium hydroxide in a urethane dimethacrylate base
- Low shrinkage when light-cured

Suggested Applications

- Cavity liner and base material prior to placement of restorative materials
- Bioactive liner and pulp-capping

Package

- 2 x 1.2ml syringes, tips



Denu Vaseline / Denu EDTA Cream

● DENU Vaseline

Water-soluble and water-washable separating material

Features

- Excellent separation, Hydrophilic material
- Blocking oxygen layer on resin surface
- No lowering of the adhesive power of cements or bonding material
- Blue-colored for easy checking of cleaning

Suggested Applications

- Separation of prosthesis such as temporary crown
- Easy separation of impression
- Blocking oxygen layer on resin surface

Package

- 1 x 5ml syringe, tip



● DENU EDTA Cream

Root canal preparation EDTA cream

Features

- Root canal cleaner with unique formulation of glycol and urea peroxide
- Excellent chelation removes inorganic compound
- Lubrication provides easy instrument handling when root canal is shaped
- Tooth-colored pigment produces no pigmentation
- Perfect removal is possible after application
- Low viscosity of the creamy type provides high flowability and easy spraying into root canal

Suggested Applications

- Cleaning and preparation of root canal
- For expansion of root canal and removal of smear layer

Package

- 2 x 6g syringes, disposable tips





ToothWhitening Agent

■ DENU Sparkle

In-office tooth whitening gel

Contains water soluble monomer for gel type bleaching
A single application can generate excellent result

Features

- Appropriate viscosity prevents the rundown during treatment
- Superb penetration power generates excellent whitening result
- Convenient packaging for single treatment
- Excellent color match with natural tooth

Suggested Applications
- office bleaching

Storage [Important]
- Make sure to store the whitening gel and H2O2 for use in refrigerator, not in freezer

Package type [Separate type]
- The whitening gel and H2O2 are separated. It enables to prolong the storage period when they are mixed together for use after storage

Package

Whitening Kit 1 -10 x 1.5ml whitening agent jars, 10 x3.7g H2O2 bottles
- disposable spatulas, disposable brushes

Whitening Kit 2 -1 x 1.5ml whitening agent jar, 1 x3.7g H2O2 bottle
- 2 disposable spatulas, 2 disposable brushes, 2 syringe Dam , case

Clinical Procedures



■ DENU Dam

Light cured gum-protecting material for tooth whitening

Gingival protection resin material to protect gum damage caused by bleaching agents during the tooth whitening process

Shade: Blue

Features

- Optimal viscosity for easy handling
- Short light-curing time (15 seconds)
- Adequate flow, Easy usability.
- Easy to remove after the treatment

Suggested Applications
- Gum protection for tooth whitening

Package
- 5 x 1.2ml syringes, disposable tips



Clinical Procedures



Preventives & Pumice

Good Choice, Best Works

DENU Preventives & Pumice

Dental care materials to protect teeth



Preventives & Pumice

Denu Fluoride Varnish	22
- Denu Clear Varnish (Premium)	
- Denu Varnish	
Denu Fluoride Gel	23
- Flavor: strawberry, orange, peach	

Denu Fluoride Gel Tray	23
- Large, Medium, Small	
Denu Seal	24
Denu Pumice Paste	24
- Denu Pumice Paste (with fluoride)	
- Denu Pumice Paste (without fluoride)	

Premium

DENU Clear Varnish

Contains a flavored, xylitol-sweetened, 5% sodium fluoride with TCP and vitamin E in a natural pine resin carrier

Very effective caries prevention and hypersensitive tooth treatment

Tooth-colored, Transparent

Flavor: Fresh sweet apple

Features

- Contains high-enriched fluoride, Long-lasting fluoride release
- Contains tricalcium phosphate(TCP) for continuous and effective fluoride release
- High adsorptive power for fast tooth surface coating
- Long-lasting sealing of the exposed dentinal tubules for relief of hypersensitivity
- Transparency provides natural tooth color for esthetic effect
- Fresh sweet apple flavor for easy access to children

[For effective cure, it is recommended not to eat or drink within 0.5-1 hour after the treatment or not to brush teeth within at least 4-6 hours.]

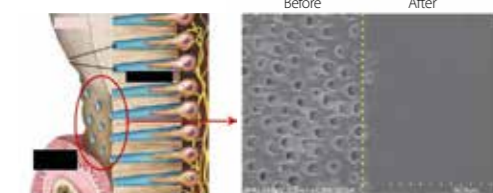


Suggested Applications

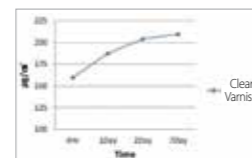
- Caries prevention and hypersensitive tooth treatment

Package

- 10 unit-dose package: 10 unit doses (Varnish and applicator brush are contained in each unit dose)
- 100 unit-dose package: 100 unit doses (Varnish and applicator brush are contained in each unit dose)



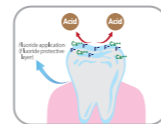
Excellent dentinal tubules occlusion capability(hypersensitivity treatment)



Cumulative graph of Denu Clear Varnish fluoride emission

Effects of Fluoride Protective Layer

- The long coating of Denu Clear Varnish on the teeth leads to continuous and effective emission of fluoride and tricalcium phosphate(TCP) on the tooth surface, enabling dental care and effective treatment of hypersensitivity.
- Fluoride ion in saliva makes fluorapatite and strengthens dental enamel.
- Denu Clear Varnish provides effective caries prevention by mixing with sodium fluoride which offers excellent delivery of fluoride ion.



DENU Varnish

Contains flavored, xylitol-sweetened, 5% sodium fluoride with Vitamin E in a natural resin carrier for effective caries prevention and hypersensitive tooth treatment

Flavor: Orange

Features

- Excellent flowability for easy application, Long-lasting fluoride release
- High adsorptive power for fast tooth surface coating, Contains xylitol for effective caries prevention
- Long-lasting sealing of the exposed dentinal tubules for relief of hypersensitivity
- No feeling of irritation in the mouth after application due to the particles on the teeth
- Light yellow color of Denu Varnish indicates the application, but disappears and becomes tooth color in 5 minutes after the application
- Fresh natural orange flavor is added to reduce unpleasant smell and bitter taste of pine resin



Suggested Applications

- Caries prevention and hypersensitive tooth treatment

Package

- 10 unit-dose package: 10 unit doses (Varnish and applicator brush are contained in each unit dose)
- 100 unit-dose package: 100 unit doses (Varnish and applicator brush are contained in each unit dose)

DENU Fluoride Gel

Contains fluoride compounds and is used for dental care such as caries prevention by slightly biting a fluoride gel tray with fluoride gel filled

Features

- Natural dental care including caries prevention
- Contains fluoride ion (1.23%), xylitol and vitamin E
- Ionite APF Thixotropic gel vitrifies within 1 minute
- Does not flow down when the gel is filled in the tray
- Effectiveness varies depending on the biting time of the fluoride gel tray filled with the fluoride gel (1 minute: 80% effective, 4 minutes: 100% effective)

[Special attention should be paid not to swallow the remaining fluoride gel and to spit it all. Eating is prohibited within 1 hour after the gel is applied.]

Suggested Applications

- Caries prevention using a fluoride gel tray

Package

- 1 x 500ml bottle



Flavor: Strawberry, Orange, Peach

DENU Fluoride Gel Tray

Disposable dual-arch tray designed for application of fluoride gel

Size: Large, Medium, Small

Features

- Dual arch-shaped tray for lower and upper teeth
- No easy outflow from the tray when the fluoride gel is filled in
- Made of harmless soft rubber to minimize feeling of resistance or irritation
- Curved grip for good grip feeling and tray folding

Suggested Applications

- Application of fluoride gel for caries prevention

Package

- 25 pcs / small box
- 100 pcs / big box (4 small boxes contained)

[The gel does not flow down when the gel is filled in the tray]





Preventives & Pumice

DENU Seal

Light curing sealant with great adhesion and hardness

Prevents dental caries by sealing pits and fissures

Shade: White

Features

- High flowability for minute pit or fissure
- High quality of water soluble with optimum nano filler
- Excellent adhesion and hardness
- Effective fluoride release
- Great adhesion and no falling
- Low polymerization contraction and strong abrasion resistance
- Excellent color match with natural tooth



Suggested Applications

- Sealing of pits and fissures
- Filling of minute dental decay
- Restoration of deciduous tooth

Package

- 2 x 1.2ml syringes, disposable tips

Clinical Procedures



DENU Pumice Paste

Material for grinding and polishing of teeth or prosthesis

Features

- Enables to polish and smooth rough surface of tooth or prosthesis
- Phosphated fluoride(1.23% fluoride ion) is contained
- Optimal viscosity leaves less lumps and provides fast grinding
- Nano-sized natural particles provide fine abrasion
- No pigmentation after application
- Sweet strawberry and natural mint flavors

Suggested Applications

- Grinding and polishing of teeth or prosthesis

Package

- 1 x 340g bottle

[Fluoride is optional : with fluoride / without fluoride]



Jig, Cap, Bridge & Partial clasp

Good Choice, Best Works

DENU Jig Handy

Light-cured material for making an **implant jig**

Features

- Easy and fast fabrication of implant jig
- **Shaping of an implant jig by hand** or with instrument
- High strength, Low polymerization shrinkage

Suggested Applications

- Used to make an implant jig for holding the position of fixture, abutment, prosthesis

Package

- 5 x 12ml(13g) syringes

Procedure



Make the implant jig with carving knife

Light cure for 20-30 seconds

Take out the solidified implant jig from the model

Total working time is 3 minutes



DENU Jig Paste

Multi-function light cured material for making an **implant jig**

Features

- No running down when applied (Not so flowable)
- No shrinkage or expansion after applied
- Completely burned out during burning when used as a cap, No residue
- Big volume (12ml/10.5g)

Suggested Applications

- Used to make **implant jig, cap & bridge, post core, partial clasp, block out**

Package

- 5 x 12ml(10.5g) syringes





Disinfections

DENU Suction Cleaner

Eco-friendly natural enzyme, Fresh orange flavor

Excellent detergency makes no bubbles or rust, providing general effective sterilization of bacteria, mold, virus

Very economical (1:100 dilution)

Features

- Safe pH-Neutral Agent
The biodegradable agent of Denu Suction Cleaner is safe for the equipment or human body. By using natural nano-de composition enzyme, it is eco-friendly and safe pH-neutral.
- Protein Decomposition, Suction Coating
With the natural enzyme added, Denu Suction Cleaner decomposes the protein residue left in the suction after cleaning and coats the suction surface to discharge saliva or blood.
- Removal of Bad Smell
With fresh orange and phytoncide flavor added, it removes bad smell by backward flow during summer or rainy season thoroughly.
- Very Economical
1:100 dilution of the liquid saves cost a lot.

Suggested Applications

- Used to clean and remove saliva, blood, protein, tissue debris inside unit chair suction or spittoon tube.

Package

- 1 x 2.5L bottle



2.5L

[Directions for Use]

- Dilute 10ml of Denu Suction Cleaner with 1L of water and pour or suck it into the suction line

DENU Ultra Cleaner

Muti-Function Detergent

Cleaning, rust & corrosion prevention, sterilization of dental or surgical **Instruments**

Main ingredient: Benzethonium Chloride (2%)

Features

- Excellent detergency for general instruments (mirror, forcep, probe, scissors, etc.) and delicate instruments (file, bur, drill, etc.)
- Superb rust prevention & sterilization
- Main ingredient: Benzethonium Chloride (2%)
- Very economical (dilution rate: 1:50-1:80)
-1:80 dilution for general instruments (mirror, forcep, probe, scissors, etc.)
-1:50 dilution for delicate instruments (file, bur, drill, etc.)
- Applicable for ultrasonic cleaner

Suggested Applications

- Used for cleaning, rust & corrosion prevention, sterilization of dental or surgical instruments

Package

- 1 x 2.5L bottle / 1 x 1L bottle

Shelf life

- Crude liquid (Denu Ultra Cleaner):
2 years from date of manufacture
- Unused diluted liquid: maximum 2 weeks
- Used diluted liquid: maximum 4 days



2.5L

1L

[Directions for Use]

- **1:80 dilution**
- Used to clean general instruments (mirror, forcep, probe, scissor, etc.)
- Use 13ml of Denu Ultra Cleaner for 1L of water.
- **1:50 dilution**
- Used to clean delicate instruments (file, bur, drill, etc.)
- Use 20ml of Denu Ultra Cleaner for 1L of water.



Other Products

Good Choice, Best Works

DENU Stick Free

Easy and quick picking up, holding and placing of inlay, onlay, veneer, etc.

Features

- Sticky ball-shaped tip on the end
- Optimally sticky to pick up, hold, move, place small objects
- No scratches occur on the surface of the object.
- Easy and convenient to handle, Disposable

Suggested Applications

- Used to easily pick up, hold, move, place small objects such as inlay, onlay, veneer

Package

- 64 sticks / box (4 plastic packs containing 16 sticks for each pack)



DENU Plastic Probe

Flexible and comfortable **plastic probe** with round tip

- Type: - Probe CP 12 (3-6-9-12)
- Probe UNC (1-2-3...-13)

Features

- Made of special plastic, which is strong and flexible and makes the patient feel comfortable when it is in the mouth
- Simple and easy to measure
- Easy and convenient to handle

Suggested Applications

- Used to determine the presence of tooth decay and measure its depth



- Package
- 5 pcs / pack

DENU Shim Stock with Cutter

Occlusion-checking foil

Features

- Accurate occlusion checking
- Easy to cut with a cutter on the case
- The clear plastic case enables to check the remaining foil easily
- The plastic case is shaped to hold comfortably
- 8µm thick, 8mm wide, 6m long foil

Suggested Applications

- Used to make a final check on occlusion

Package

- 8µm thick, 8mm wide, 6m long foil / case

