

## POST CEMENTATION AND CORE BUILD-UP TECHNIQUE\*

- 
1. Isolate tooth. Self-etch or total-etch post space. Rinse thoroughly.
  2. Remove excess water with a brief burst of air. Remove any pooled water.
  3. Dispense UNIVERSAL PRIMER. Mix adhesive.
  4. Scrub 2 coats of UNIVERSAL PRIMER into the canal. Air dry to remove excess solvent.
  5. Determine the post length according to the manufacturer's instructions.
  6. Coat the post with UNIVERSAL PRIMER, air dry.
  7. Inject CORE-FLO DC Lite into the canal.
  8. Coat the apical end of the post with CORE-FLO DC Lite. Seat the post into the canal gently.
  9. Continue to express CORE-FLO DC Lite around the post and build-up the core.
  10. Light cure.
  11. Continue with final preparation for the impression.

\* Refer to complete instructions for detailed techniques.

## ORDERING INFORMATION

### CORE-FLO DC

#### CORE-FLO DC w/UNIVERSAL PRIMER

1 Dual-Syringe CORE-FLO DC Shade: NATURAL/A1 (8g), OPAQUE WHITE (8g),  
1 Bottle ea. UNIVERSAL PRIMER Parts A&B (6ml ea.), 1 Dispensing Gun, Accessories, Instructions

M-23412K

#### CORE-FLO DC - 1 Dual-Syringe (8g), Accessories, Instructions

NATURAL/A1  
OPAQUE WHITE  
BLUE

A-23011P  
A-23012P  
A-23013P

### CORE-FLO DC LITE

#### CORE-FLO DC LITE w/UNIVERSAL PRIMER Intro Kit

1 Dual-Syringe CORE-FLO DC LITE Shade: NATURAL/A1 (8g), OPAQUE WHITE (8g),  
1 Bottle ea. UNIVERSAL PRIMER Parts A&B (6ml ea.), Accessories, Instructions

AB-17410K

#### CORE-FLO DC LITE w/ACE UNIVERSAL PRIMER Intro Kit

1 Dual-Syringe CORE-FLO DC LITE Shade: NATURAL/A1 (8g), OPAQUE WHITE (8g),  
1 ACE® UNIVERSAL PRIMER (2ml), Accessories, Instructions

AB-17412K

#### CORE-FLO DC LITE w/ACE UNIVERSAL PRIMER & ACE Dispenser Kit

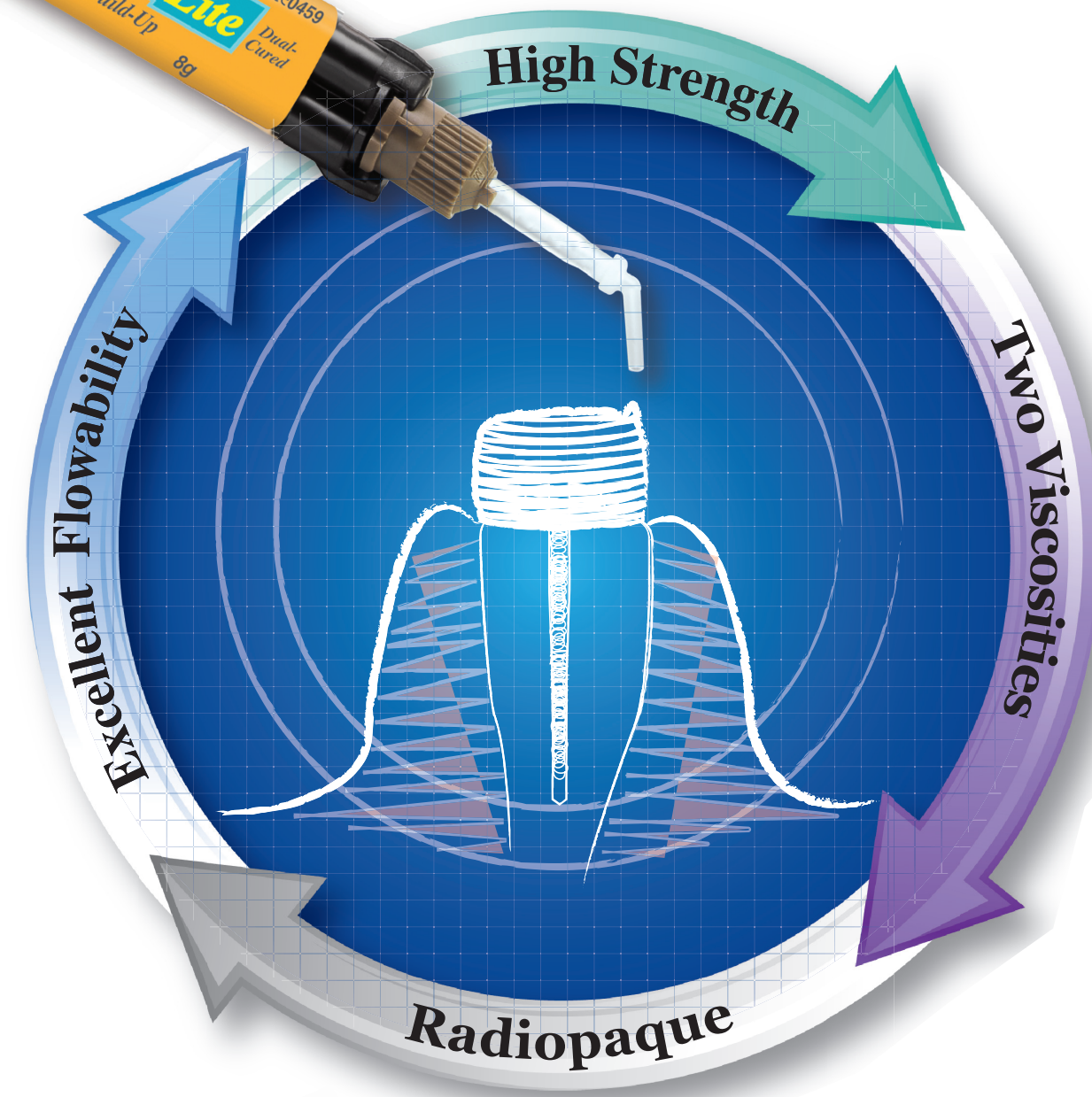
1 Dual-Syringe CORE-FLO DC LITE Shade: NATURAL/A1 (8g), OPAQUE WHITE (8g),  
1 ACE UNIVERSAL PRIMER (2ml), 1 ACE Dispenser, Accessories, Instructions

M-17420K

#### CORE-FLO DC LITE - 1 Dual-Syringe (8g), Accessories, Instructions

NATURAL/A1  
OPAQUE WHITE

A-17801P  
A-17803P



CORE-FLO™ DC &  
CORE-FLO DC LITE



Dual-Cure Core Build-Up, Endodontic Post  
Cement & Dentin Replacement Material



www.biolinkdubai.com



# CORE-FLO™ DC



## Dual-Cured Flowable Core Build-Up/Dentin Replacement Material



CORE-FLO DC is a versatile dual-cured, fluoride-containing core material that is ideal for core build-ups, post cementation and dentin replacement. CORE-FLO DC is radiopaque and available in two esthetic shades, NATURAL/A1 and OPAQUE WHITE and a contrasting BLUE to meet all of your direct and indirect restorative requirements.

- HIGH STRENGTH AND LOW WATER SORPTION ASSURES A STRONG FOUNDATION FOR CROWNS AND DIRECT RESTORATIVES - CUTS JUST LIKE DENTIN**
- LOW SHRINKAGE PROPERTIES ALLOW IT TO BE USED EFFECTIVELY AS A DENTIN REPLACEMENT MATERIAL**
- EXCELLENT FLOWABILITY - VOID-FREE FLOW MAKES IT IDEAL FOR POST CEMENTATION**



1. Failing restoration with recurrent decay and enamel fractures.



2. After isolation with dam and wedges, old restoration and decay were removed.



3. A sectional, wedge, and ring were placed before selectively etching the enamel. All-Bond Universal® was applied, air thinned, and light-cured, followed by Core-Flo DC.



4. The dual cure chemistry provides reliable polymerization while providing a high strength and dentin-like core.



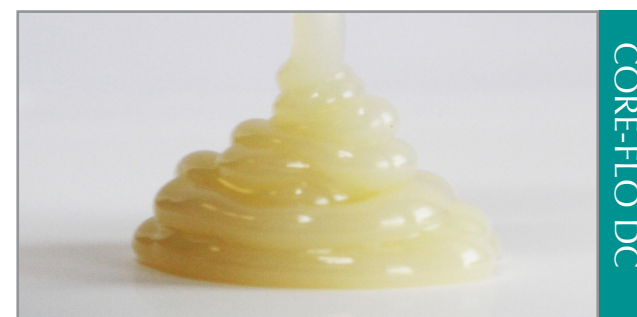
5. The molar was prepped for a zirconia crown.



6. The zirconia crown provides an excellent restorative service for the patient.

Dentistry courtesy of Dr. Jack Griffin.

### STACKABLE



CORE-FLO DC

# CORE-FLO™ DC Lite

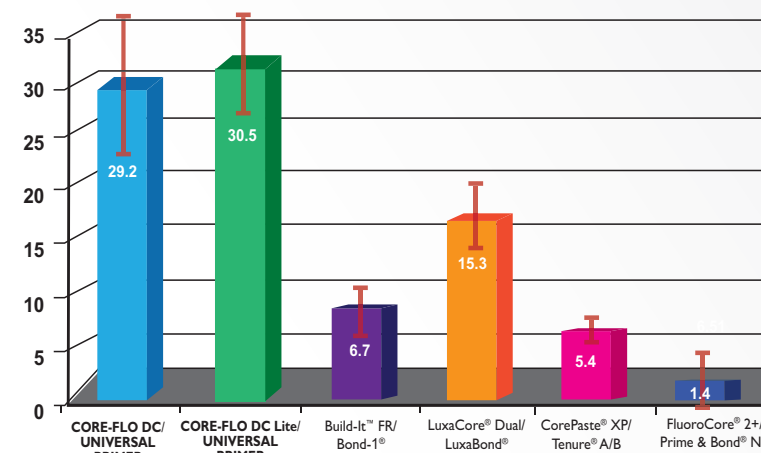
## Self-Leveling Dual-Cured Core Material



CORE-FLO DC Lite is a dual-cured, fluoride-containing core material that is dispensed with an auto-mix dual-syringe. CORE-FLO DC Lite's optimal self-leveling viscosity allows for excellent adaption resulting in gap-free margins when replacing natural dentition with a direct core build-up. In addition, the clinician can cement the post and build-up the core. CORE-FLO DC Lite is available in NATURAL/A1 and OPAQUE WHITE shades.

### Dentin Shear Bond Strength

The combination of CORE-FLO DC or CORE-FLO DC Lite with UNIVERSAL PRIMER™ offers unsurpassed bond strengths to dentin, enamel and fiber post.



Core Material S/C. Adhesive placed per manufacturers instructions. Data on file. Trademarks are property of their respective owners.

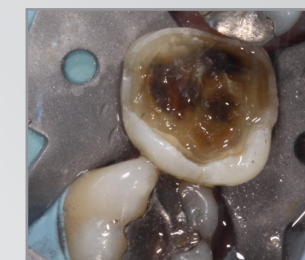
### SELF-LEVELING



CORE-FLO DC Lite



1. Pre-operative photo.



2. Amalgam and gross decay excavated.



3. After adhesive is placed, Core-Flo DC Lite is placed into the preparation.



4. Final preparation.



5. Top view of final preparation.



6. Final post operative bitewing #19.

Dentistry courtesy of Dr. Adamo Notarantonio.

#### CORE-FLO DC PHYSICAL PROPERTIES:

Working Time/Setting Time (S/C)	2 / 7 Minutes at Room Temp.
Compressive Strength	266 / 261MPa (LC / SC)
Flexural Strength	129 / 114MPa (LC / SC)
Radiopacity	1.6mm

#### CORE-FLO DC Lite PHYSICAL PROPERTIES:

Working Time/Setting Time (S/C)	1 / 7 Minutes at Room Temp.
Compressive Strength	229 / 259 Mpa (LC / SC)
Flexural Strength	127 / 93 Mpa (LC / SC)
Radiopacity	1.8mm