

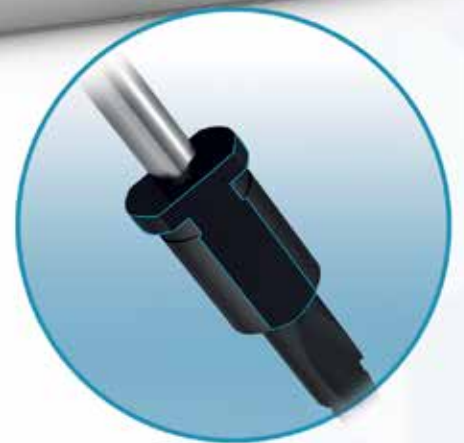


JDENTALCARE
just smile

FDA
Approved



MADE IN ITALY



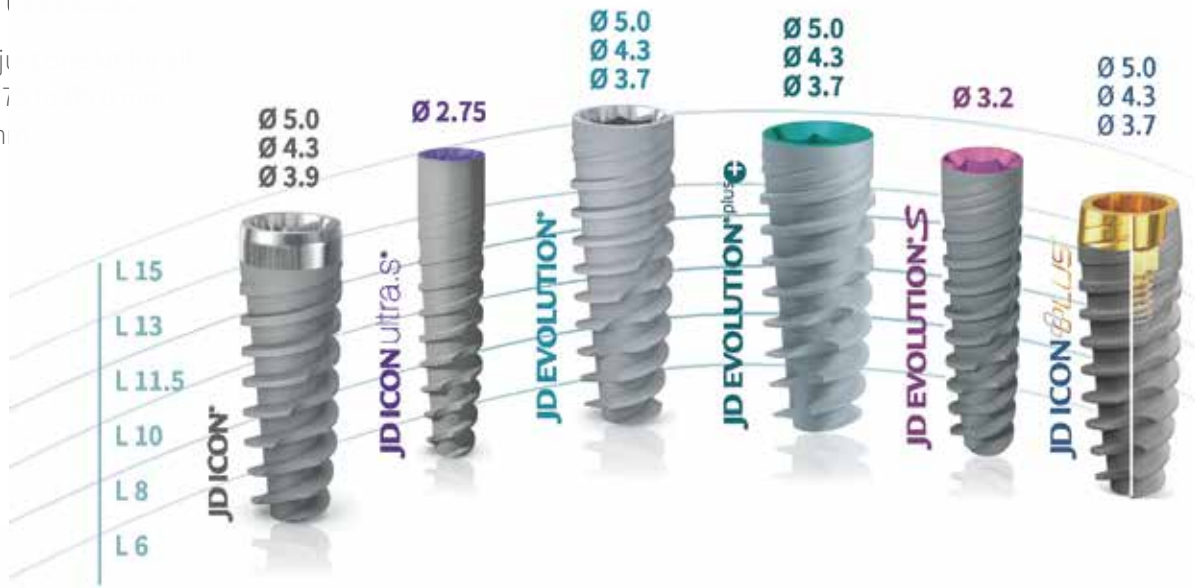
JD Guided Surgery Kit

Friend of your hand.

Simplicity

One kit for all JD implant lines

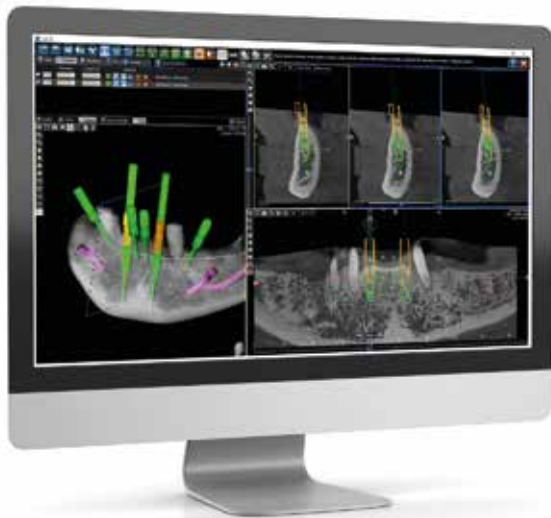
Simplified insertion with just one kit for all JD implant lines from Ø2.75 to Ø5.0 and from length 6 to 15 mm.



Compatibility

User-friendly software design.

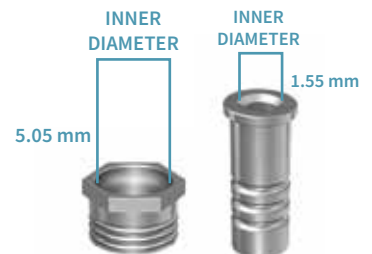
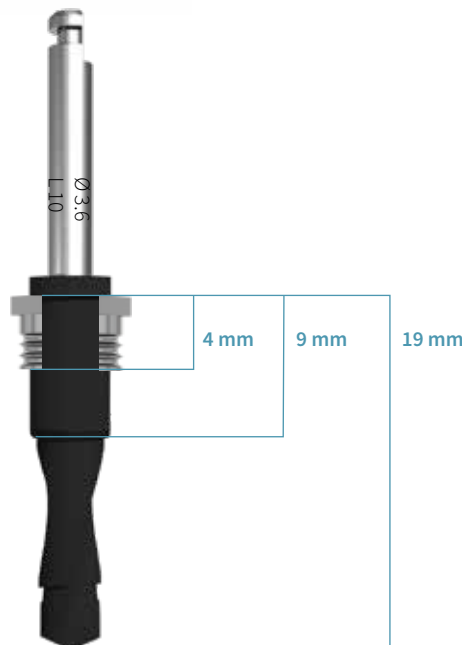
A single kit compatible with the main software programs for guided surgery present on the market.



Precision

Guided implant depth control.

High precision in surgical procedures: implants are placed to the planned depth using a surgical guide and the guided surgery instruments are used in combination with a single sleeve of Ø5.05 mm for a secure implant depth control.



Let your hand be guided by the JD Guided Surgery Kit.

The ideal solution to perform a minimally invasive surgery with more precision, increased predictability results and with few simple guided surgery steps.



New design for better surgery

All JD Guided Drills have a non cylindrical special design with two lateral cuts which allows:

- a less friction on the sleeves, avoiding overheating
- a better external irrigation during the implant site preparation.

Drilling protocols.

It is recommended to adhere to the indications of the following drilling sequence to ensure optimal primary stability of the implant.



Attention:

In order to perform a correct osteotomy, the first drill that must be used is the drill Ø2.4 mm L 6.0 mm. This drill is designed also to flat the bone.

IMPLANT DIAMETER	SOFT BONE TYPE IV	MEDIUM BONE TYPE II-III	DENSE BONE TYPE I
Ø 2.75	2.0	2.0 2.4	2.0 2.4 2.8 L 6
Ø 3.2	2.0 2.4	2.0 2.4 2.8 L 6	2.0 2.4 2.8 3.2 L 6
Ø 3.7/3.9	2.0 2.4 2.8 L 6	2.0 2.4 2.8 3.2 L 6	2.0 2.4 2.8 3.2 3.6 L 6
Ø 4.3	2.0 2.4 2.8 3.2 L 6	2.0 2.4 2.8 3.2 3.6 L 6	2.0 2.4 2.8 3.2 3.6 4.2 L 6
Ø 5.0	2.0 2.4 2.8 3.2 3.6 L 6	2.0 2.4 2.8 3.2 3.6 4.2 L 6	2.0 2.4 2.8 3.2 3.6 4.2 L 8

Note: All dimensions are expressed in millimeters.

Products.



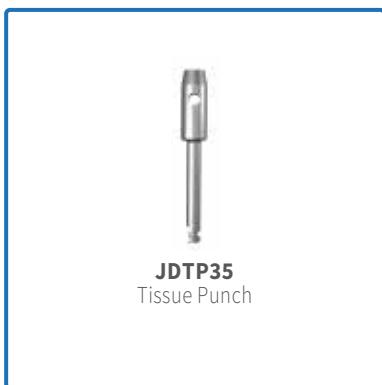
JD Torque®



Implant and Prosthetic Drivers



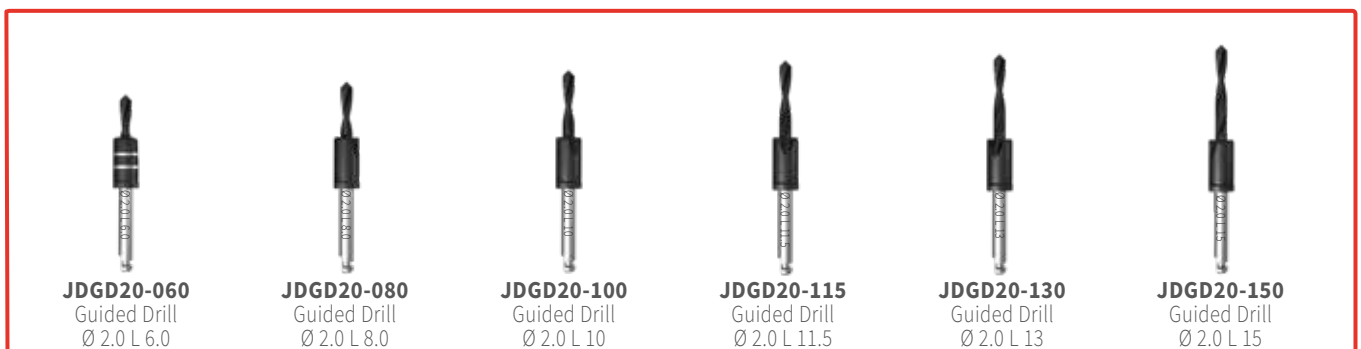
Tissue Punch



Implant Mounters



Guided Drills



Guided Drills



JDGD24-060
Guided Drill
Ø 2.4 L 6.0



JDGD24-080
Guided Drill
Ø 2.4 L 8.0



JDGD24-100
Guided Drill
Ø 2.4 L 10



JDGD24-115
Guided Drill
Ø 2.4 L 11.5



JDGD24-130
Guided Drill
Ø 2.4 L 13



JDGD24-150
Guided Drill
Ø 2.4 L 15



JDGD28-060
Guided Drill
Ø 2.8 L 6.0



JDGD28-080
Guided Drill
Ø 2.8 L 8.0



JDGD28-100
Guided Drill
Ø 2.8 L 10



JDGD28-115
Guided Drill
Ø 2.8 L 11.5



JDGD28-130
Guided Drill
Ø 2.8 L 13



JDGD28-150
Guided Drill
Ø 2.8 L 15



JDGD32-060
Guided Drill
Ø 3.2 L 6.0



JDGD32-080
Guided Drill
Ø 3.2 L 8.0



JDGD32-100
Guided Drill
Ø 3.2 L 10



JDGD32-115
Guided Drill
Ø 3.2 L 11.5



JDGD32-130
Guided Drill
Ø 3.2 L 13



JDGD32-150
Guided Drill
Ø 3.2 L 15



JDGD36-060
Guided Drill
Ø 3.6 L 6.0



JDGD36-080
Guided Drill
Ø 3.6 L 8.0



JDGD36-100
Guided Drill
Ø 3.6 L 10



JDGD36-115
Guided Drill
Ø 3.6 L 11.5



JDGD36-130
Guided Drill
Ø 3.6 L 13



JDGD36-150
Guided Drill
Ø 3.6 L 15



JDGD42-060
Guided Drill
Ø 4.2 L 6.0



JDGD42-080
Guided Drill
Ø 4.2 L 8.0



JDGD42-100
Guided Drill
Ø 4.2 L 10



JDGD42-115
Guided Drill
Ø 4.2 L 11.5



JDGD42-130
Guided Drill
Ø 4.2 L 13



JDGD42-150
Guided Drill
Ø 4.2 L 15



JDGP
Pin Drill



JGIN
Pin



JGIN
Pin



JGIN
Pin



JGIN
Pin

Sleeves



JDBGB
Template
Sleeve in peek



JDBG
Template
Sleeve



JDBGP
Pin Sleeve



JDENTALCARE

www.jdentalcare.com

JDentalCare, the JDentalCare logo and other trade marks mentioned in this document are, excluding specifically mentioned exceptions, trade marks property of JDentalCare. The images of the products represented in this brochure are not necessarily on scale.

Caution: Federal (US) law restricts this device to sale by or on the order of a licensed dentist.

Rev. 05 of 10/06/22