

# AUSTROMAT 220

## **DEKEMA Plug & Play** **Preserving quality & performance**

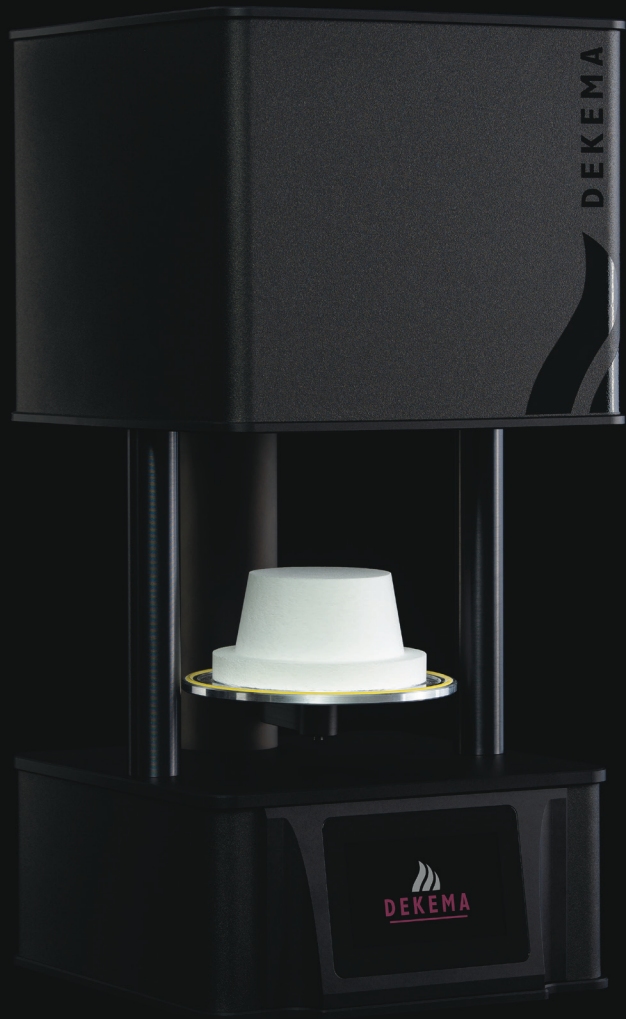
- Stand-alone furnace with optional vacuum pump
- 13 kg stable, long lasting quality, using noble, light materials
- Firing, glazing, crystallization and infiltration with and without vacuum
- Place – power – perform

## **DEKEMA Chamber**

- Well known from the high quality AUSTROMAT Series 6 firing furnaces
- Designed decades ago, operated for decades, optimized over decades
- Unique, homogeneous energy distribution
- Fiber insulation of purest quality in highest precision design







## **DEKEMA Heating**

- Well known from the high quality AUSTROMAT Series 6 firing furnaces
- Manufactured in house DEKEMA
- Unsurpassed durability and longevity

## **DEKEMA Firing Table**

- Well known from the high quality AUSTROMAT Series 6 firing furnaces
- Physically defined fiber insulation table of outstanding purity
- Usable with common firing trays

## **DEKEMA Casing**

- Fan free, integrated convection cooling
- Corrosion free, lightweight aluminum housing
- Kept in matt black

## **DEKEMA Thermocouple & Control**

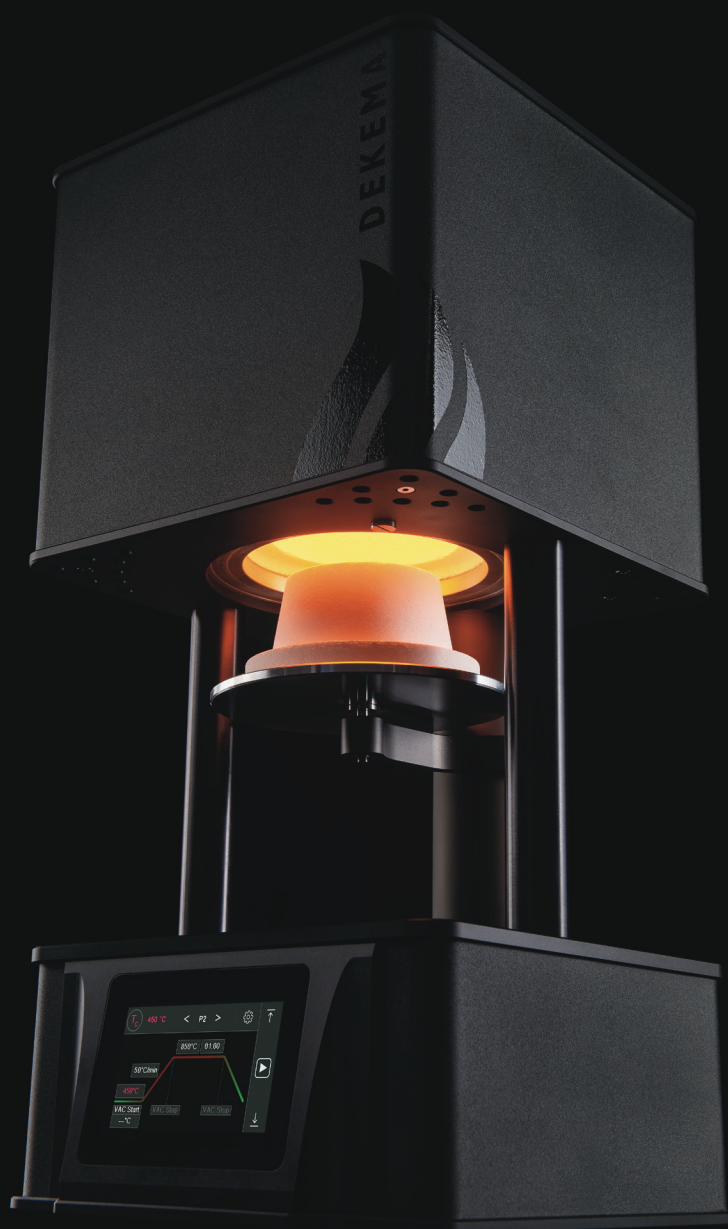
- Well known from the high quality AUSTROMAT Series 6 firing furnaces
- Platinum/platinum-rhodium thermocouple of the purest quality and a controlled accuracy far below 1 °C
- Temperature calibration at only one measuring point through the DEKEMA silver wire calibration kit, unmatched in precision

## **DEKEMA Lift System**

- Smooth lift movement
- Durable stainless steel design
- Freely selectable drying position

## **DEKEMA User Interface**

- Language independent icon surface
- Touch operation with 100 programs
- Independent vacuum start



## DEKEMA Vacuum Pump

- Self-cooling aluminum heads
- Straight air flow
- Low contamination Trenn Coat™ coating



**Optional**



- Low maintenance design
- Self-cleaning feature
- Specific shell



## Technical data

- Dimensions 266 x 531 x 258 mm (W x H x D)
- Weight 13 kg
- Max. firing temperature 1.100 °C
- Supply voltage country specific  
220 - 240 V / 50 - 60 Hz  
110 - 125 V / 50 - 60 Hz  
95 - 105 V / 50 - 60 Hz
- Max. power consumption 1.500 W

## Accessories

- Vacuum pump, country specific
  - #105201 220 - 240 V / 50 - 60 Hz
  - #105203 110 - 125 V / 50 - 60 Hz
  - #105205 95 - 105 V / 50 - 60 Hz
- Tweezers, #105236
- Firing tray, #105872 ???
- Temperature calibration kit, #101817