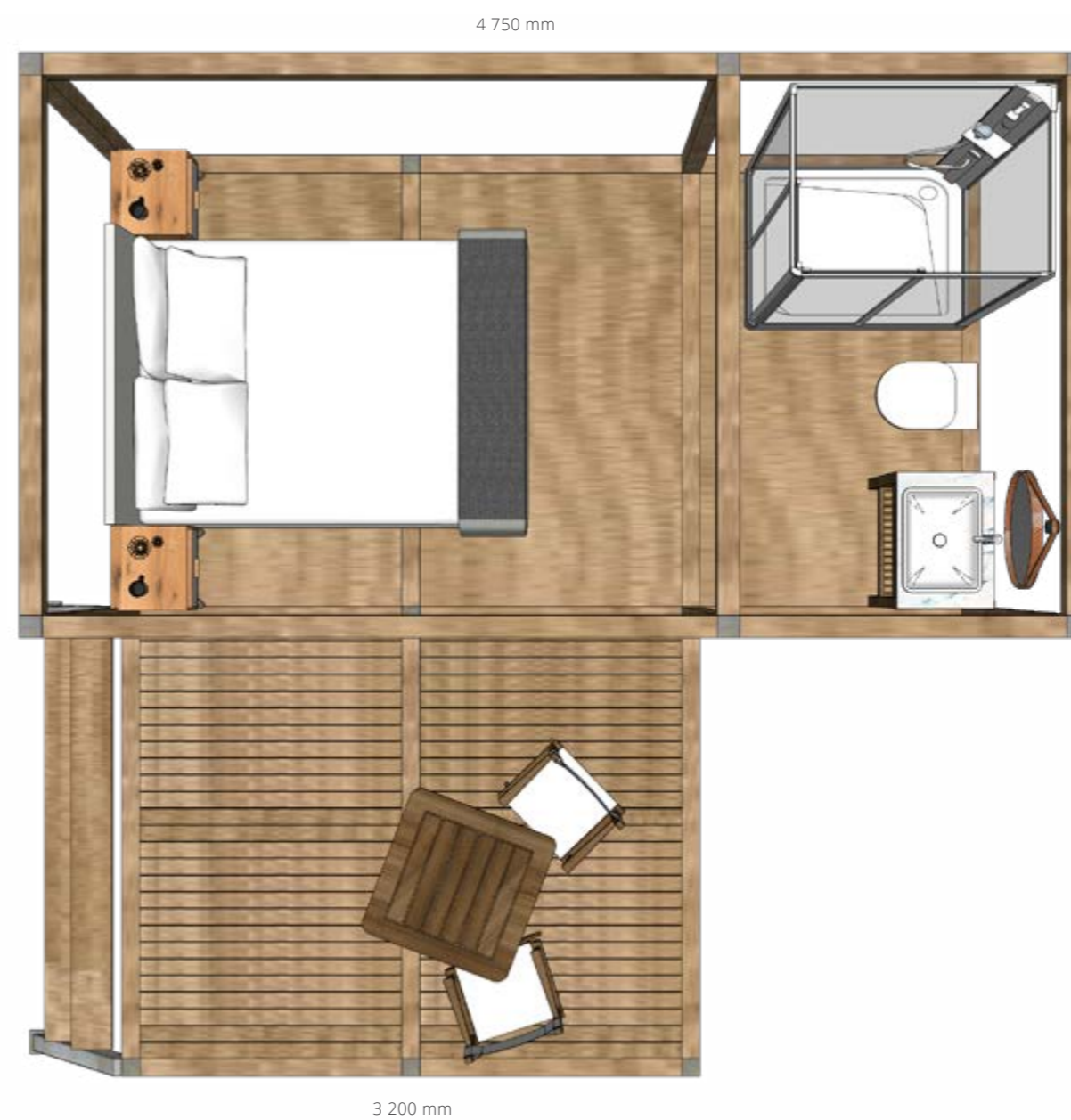
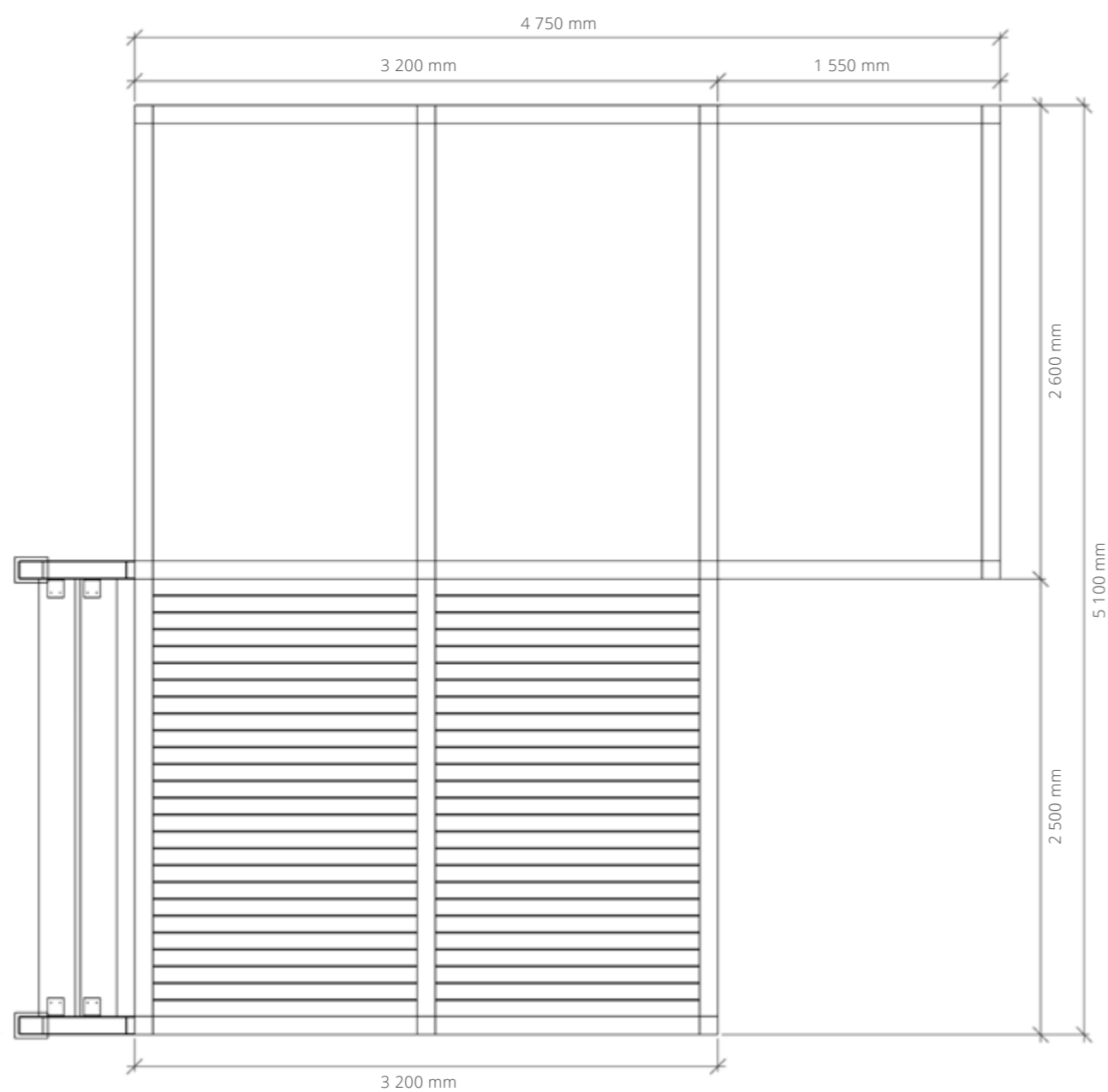


# Dara Series | 18



## Floorplan Views & Dimensions



## Dara Series | 18

## Renders & Specifications



### DARA 18 STANDARD SPECIFICATIONS

Total Covered Area	18m <sup>2</sup>	Window Type	Zipped
Internal Floorspace	10m <sup>2</sup>	Door Type	Zipped
Deck Area	8m <sup>2</sup>	Roof Structure	Flat
Total Footprint Required	175m <sup>2</sup>	Ceiling Type	
Bedroom(s)	1	Stretch Tent m <sup>2</sup>	68m <sup>2</sup>
Living Room(s)	×	Tent Poles	9
Bathroom(s)	1	Self-levelling Legs	11 (Optional)
Bathroom Fixtures & Fittings	Optional*	Floor Finishes	Optional*
Kitchen	×	Wall & Floor Insulation	Optional*
Kitchen Fittings	Optional*	Heating / Cooling System	Optional*
Wall Type	Ripped-stop Canvas*	Plunge Pool	Optional*

## Dara Series | 18

\*Talk to our team about available options