

SPIRAL MACHINE OPERATORS MANUAL

CONTENTS

- Page 2-3: Spiral Operating Tips**
- Page 4: Spiral Diagram**
- Page 5: Cylinder Cleaning Instructions**
- Page 6: Lock Instructions and Trouble Shooting**
- Page 7: Mechanism Replacement Instructions**
- Page 8: Beaver Mechanism Diagram**
- Page 9: Beaver Mechanism with Microswitch Diagram**

SPIRAL MACHINE OPERATING TIPS

Your spiral gumball machine is fully assembled and ready to place on location.

1. Remove packing material from machine. Remove protective film masking from globe, cylinder and gumball flap.
2. Retain the snake eye driver bit found with the keys. It is required to remove security screws in face plate around the mechanism.
3. Test keys in both top lock, in top cap and bottom lock, in coin access door. **Caution: do not over tighten locks!** Record key code number stamped on key.
4. To add weight to base, remove coin access door, remove 3" plug from coin floor and fill bottom with aquarium rock, sand or other material to weigh machine down, replace plug & seal with silicone to prevent possible leakage.
5. Center coin tub in base under coin drop tube.
6. Unlock top lock remove cap and fill globe with gum. Watch for broken, cut or mal-formed pieces of gumballs and remove. Recommend testing machine with 6 quarters for proper dispensing before filling globe full. Then fill to desired level and replace cap.

Maintenance

1. To clean track area: remove coin door, locate I-bracket, use ½" open end wrench on vertical rod coupler & unscrew turning to the left (maybe necessary to bend horizontal threaded rod of I-bracket down ½" so I-bracket can turn freely). Lift neck with globe attached up & lay aside. Now track can be lifted out for cleaning. Replace track so top track aligns properly gum chute & seam on cylinder centered in the rear. Replace center rod with neck & globe through hole in base cross bar. Replace lock washer &/or spacers, then screw on I-bracket to original tight position and align or adjust horizontal threaded rod for coin door replacement.
2. For general cleaning of all surfaces use "brillianize" anti-static cleaner or "novus 1". Ammonia based cleaners are not recommended.
3. For small scratch removal and polish on all surfaces use "novus 2".

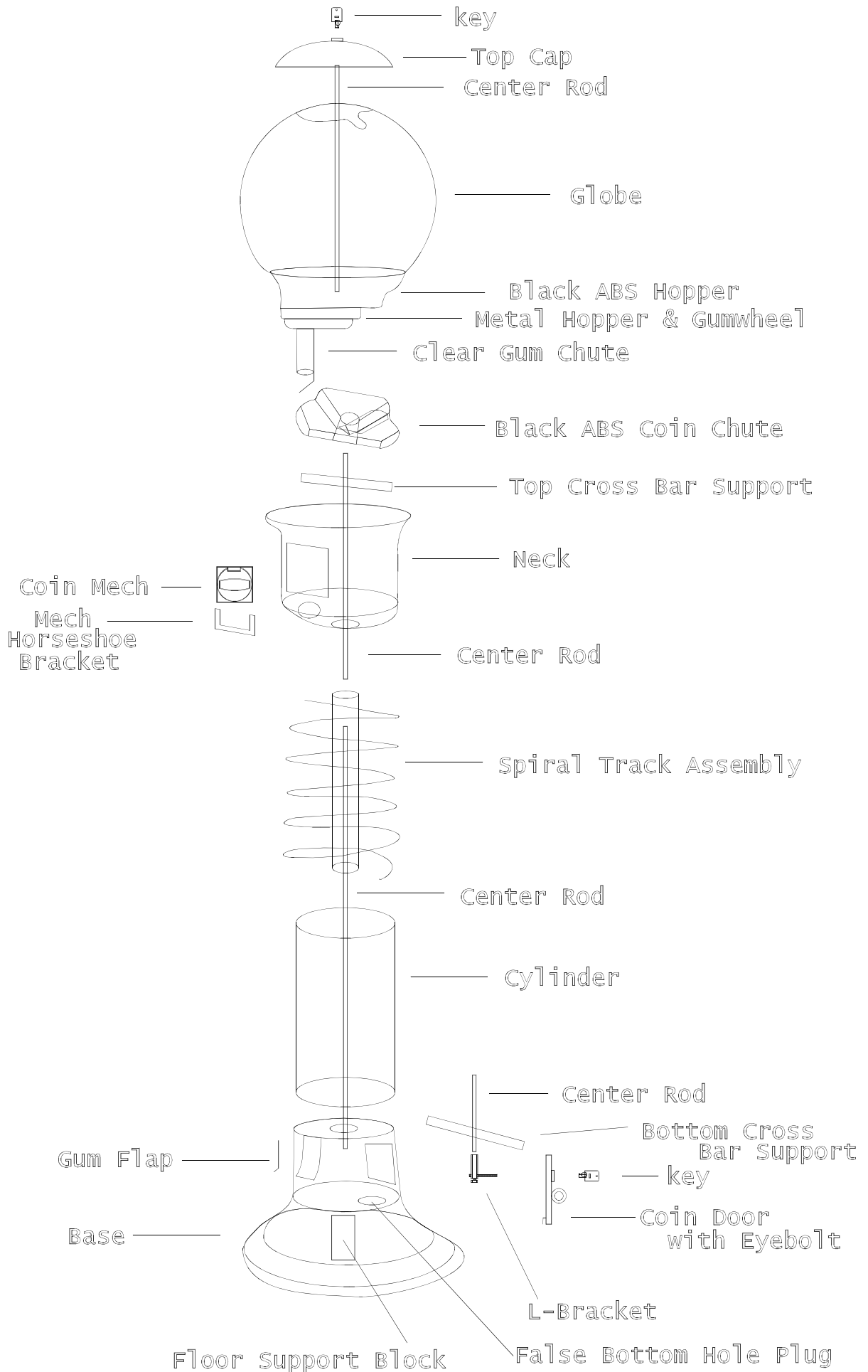
Contact your dealer for the available options

1. Display sign for top of machine for winner promotional program.
2. Chasing rope light kit in red, blue, yellow, green, multi-colors or white. Ac only. Variable speed.
3. Other product dispensing wheels for smaller round gum or candy products.

Contact novus or brillianize for their closest dealer at:

Novus 800-548-6872

Brillianize 800-445-9344

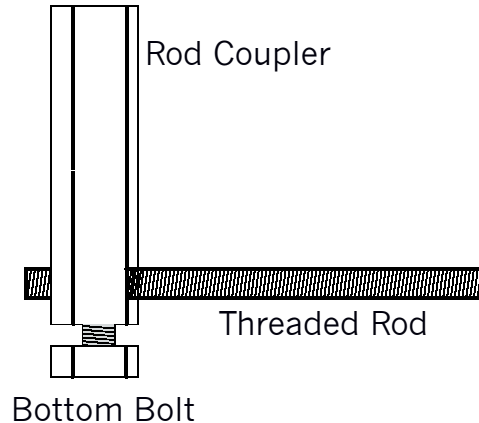


CYLINDER CLEANING / REPLACEMENT

It is easier if the unit is empty of gumballs.

1. Remove coin door.
2. Reach inside and twist off "L-bracket" (bracket in which coin door lock screws onto). You may need to use a 7/16" end wrench to loosen the rod coupler. In some cases the threaded rod protruding from the L-bracket may hit the sides, if that is the case you will need to loosen the bottom bolt and slide the thread rod so it will clear the sides.
3. With the bracket removed grab the machine around the neck & lift up. Machine will disassemble with neck & globe still intact. Note the center rod coming out of the bottom of the neck.
4. Remove the cylinder.
5. Track & cylinder now can be cleaned.
6. Place new or cleaned cylinder on base with the seam directly over the coin door area.
7. Place neck & globe back on the machine. This procedure may take two people, one to hold the globe and neck, while the other one aligns the center rod with the hole in the base bracket.
8. Tighten "L-bracket" and position the threaded rod accordingly. If you had to loosen the bottom bolt of the L-bracket be sure and tighten it to secure the threaded rod.
9. Replace coin door and tighten key.

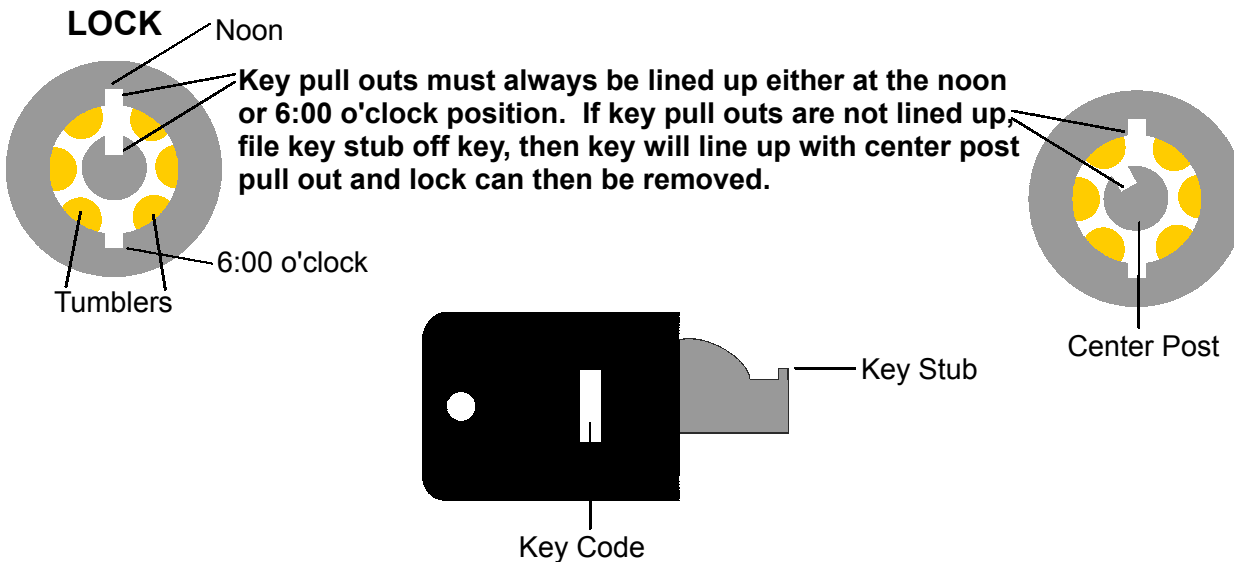
L-Bracket



LOCK TROUBLE SHOOTING

The majority of lock problems are due to over tightening the lock. Please do not tighten the locks too tight. The lock only needs to be tightened just enough to be snug where the top cap or coin door do not wiggle or have movement.

Over tightening the lock only shortens the life span of the lock and can damage the tumblers or break the lock.



If any tumblers have fallen out or if key will insert but lock will not turn, then the only way to remove the lock is to have it drilled out. This can be done by a locksmith or yourself.

If you do this yourself you will need a variable speed drill, a center punch or 1/8" drill bit, 1/4" drill bit. You will also need protective eye wear while you operate the drill.

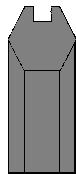
Procedure:

1. Place protective eye wear on.
2. Start with center punch or 1/8" drill bit, start small pilot hole in the lock center post so larger drill bit does not wander.
3. Change bit to 1/4" size and drill out center post.
4. Lock will fall off or apart after drilling about 7/8" to 1".
5. Remove coin door or top cap.
6. Unscrew brass portion of lock off rod.
7. Place new lock on.

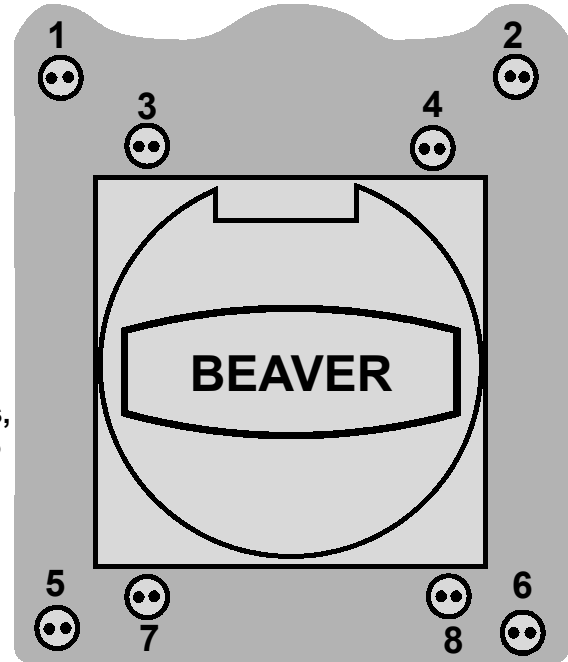
* If you do not have experience with a power drill or feel uncomfortable with this procedure, then do not attempt this procedure! Call an expert.

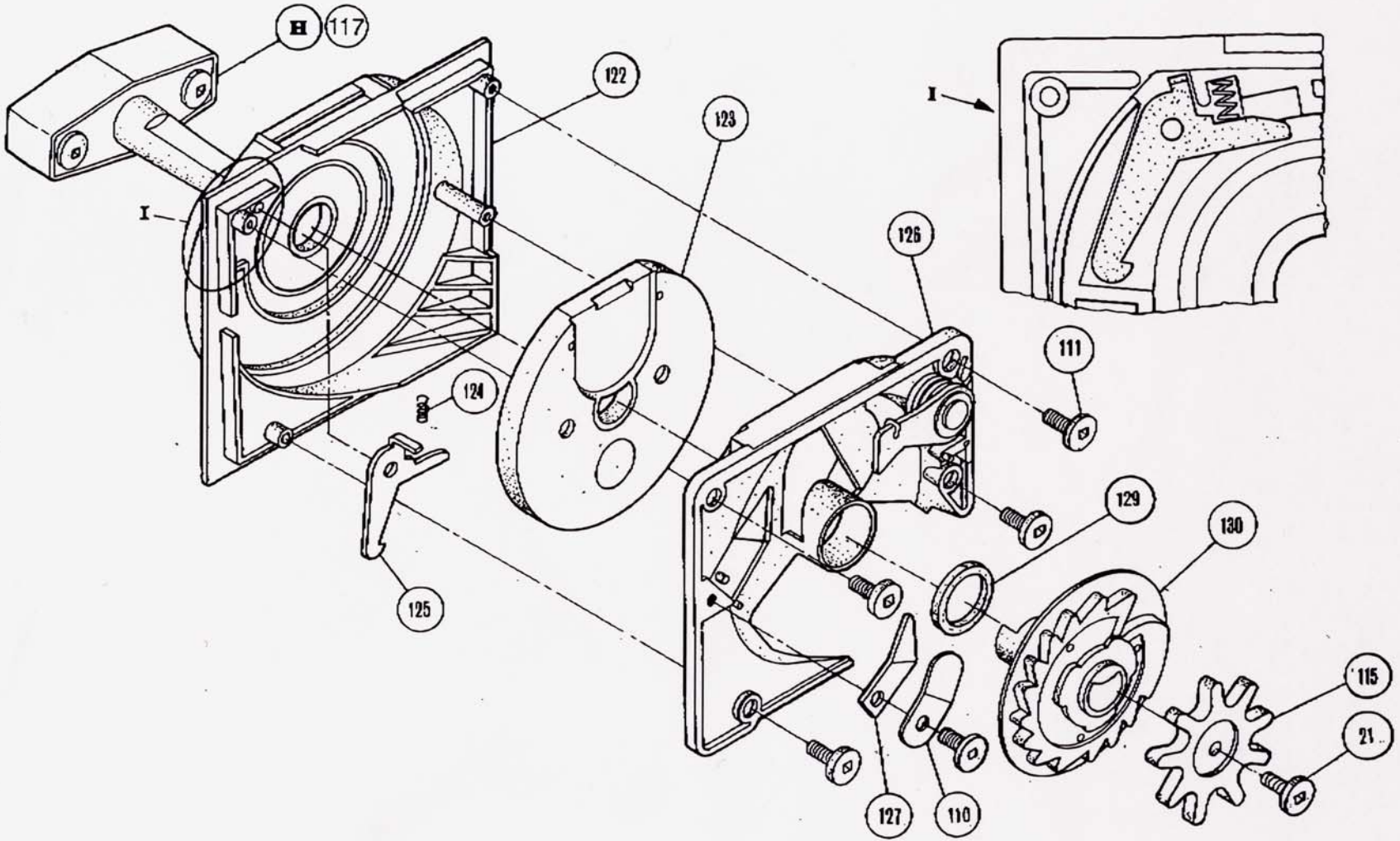
REMOVING AND REPLACING MECHANISM

1. Remove snake eye screws labeled 1-6 from face plate using snake eye bit.
2. Remove face plate with mechanism.
3. Remove screws label 7 & 8 and pull horseshoe bracket from mechanism.
4. Place horseshoe bracket onto new mech and place mech into face plate.
5. Screw horseshoe bracket to face plate by replacing screws 7 & 8.
6. Place face plate with mech into neck of the machine.
7. Replace screws 1-6 by first starting screws 3 & 4 a few turns, then while pushing downward on mech handle, screws 1,2,5 & 6 can be started, then tighten all screws.



Snake Eye Bit





2	NG. FRONT PLATE	10	NG. WASHER DOG SPRING	18	MICROSWITCH PLATE
3	NG. COINCARIER	11	MECH. SCREW. 8/32	21	SHELL HANDLE
4	NG. CON DOG	12	NG. CAM	22	COMPRESSION NIBS
5	NG. COIN DOG SPRING	13	NG. RATCHET DOG SPRING	23	ROLLERS
6	NG. RATCHET DOG	14	RIVET	24	NG. STEM
7	WASHER	15	DRIVE GEAR	25	HANDLE LID
8	NG. BACK PLATE	16	DRIVE GEAR SCREW 10/24	26	MICROSWITCH SCREW 3/48 X 5/8
9	NG. WASHER DOG	17	MICROSWITCH	27	MICROSWITCH SCREW 3/48 X 3/8

