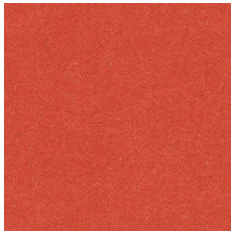
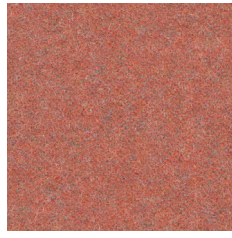


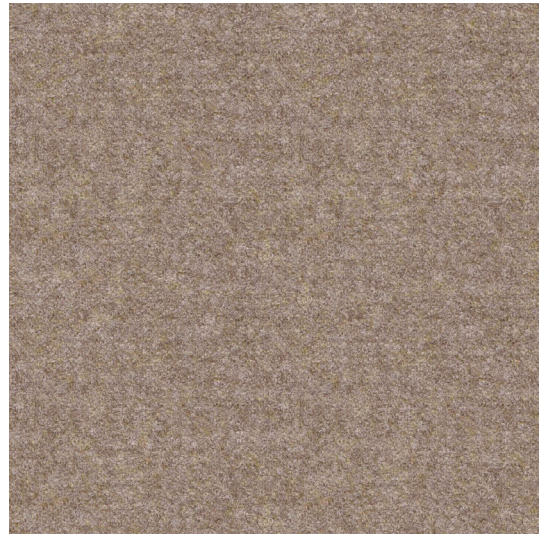
Cat. 3



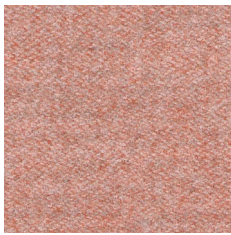
* LDS84 S84



* LDS73 S73



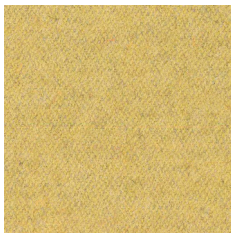
* LDS32 S32



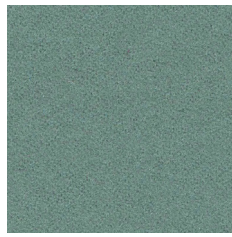
* LDS74 S74



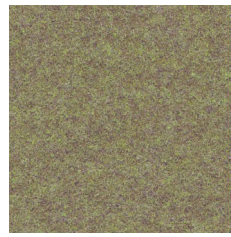
* LDS37 S37



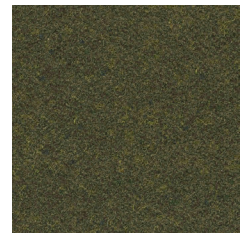
* LDS45 S45



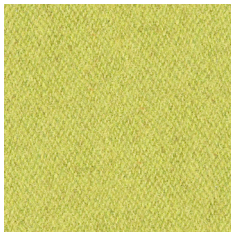
* LDS49 S49



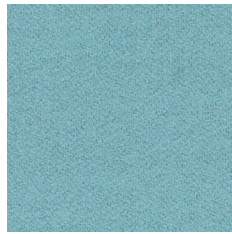
* LDS48 S48



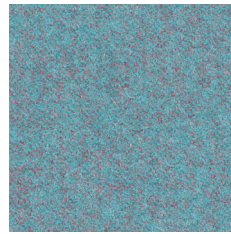
* LDS42 S42



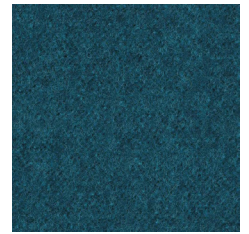
* LDS46 S46



* LDS55 S55



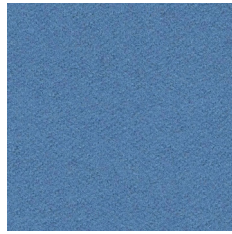
* LDS56 S56



* LDS59 S59



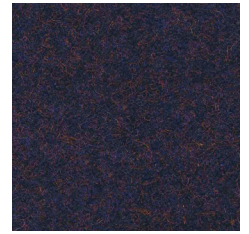
* LDS08 S08



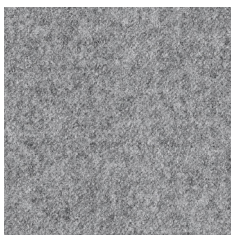
* LDS63 S63



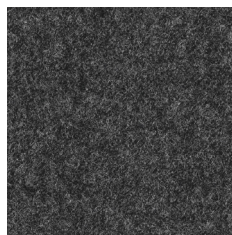
* LDS62 S62



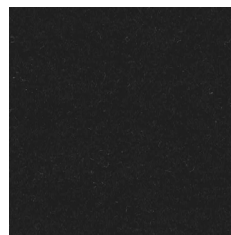
* LDS61 S61



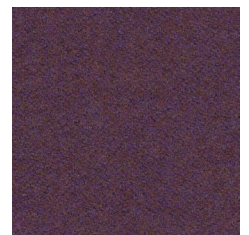
* LDP16 S16



* LDS17 S17



* LDS27 S27



* LDS70 S70



EN

Certified to the EU Ecolabel

Certified to Indoor Advantage™ “Gold”

Composition

95% Virgin Wool, 5% Polyamide

Weight

400 g/m²

Abrasion resistance

100.000 Martindale cycles

Flammability

BS EN 1021-1 (cigarette)
BS EN 1021-2 (match)
BS 7176 Low Hazard
UNI 9175 Classe 1 IM
EN 13501-1, D-s1, d0 (adhered)
CAL TB 117
ÖNORM B 3825
ÖNORM A 3800-1

Light fastness

5 (EN ISO 105-B02)

Fastness to rubbing

wet: 4; dry: 4 (ISO 105-X12)

FR

Certifié conforme à l'écolabel européen

Certifié Indoor Advantage™ Gold

Composition

95% Laine Vierge, 5% Polyamid

Poids

400 g/m²

Résistance à l'abrasion

100.000 Cycles Martindale

Inflammabilité

BS EN 1021-1 (cigarette)
BS EN 1021-2 (allumette)
BS 7176 Low Hazard
UNI 9175 Classe 1 IM
EN 13501-1, D-s1, d0 (collé)
CAL TB 117
ÖNORM B 3825
ÖNORM A 3800-1

Stabilité à la lumière

5 (EN ISO 105-B02)

Résistance au frottement

humide: 4; sec: 4 (ISO 105-X12)

DE

Zertifiziert nach EU Ecolabel

Zertifiziert gemäß Indoor Advantage™ „Gold“

Zusammensetzung

95% Schurwolle, 5% Polyamid

Gewicht

400 g/m²

Abriebfestigkeit

100.000 Martindale-Zyklen

Entflammbarkeit

BS EN 1021-1 (Zigarette)
BS EN 1021-2 (Streichholz)
BS 7176 Low Hazard
UNI 9175 Classe 1 IM
EN 13501-1, D-s1, d0 (anhaftend)
CAL TB 117
ÖNORM B 3825
ÖNORM A 3800-1

Lichtgeschwindigkeit

5 (EN ISO 105-B02)

Reibechtheit

nass: 4; trocken: 4 (ISO 105-X12)

! Batch to batch variations in shade may occur within commercial tolerances.

! Des variations de teinte d'un lot à l'autre peuvent se produire dans le cadre des tolérances commerciales.

! Innerhalb der handelsüblichen Toleranzen können Farbabweichungen von Charge zu Charge auftreten.