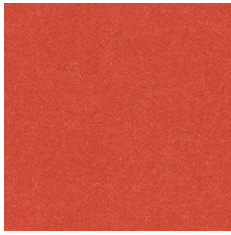


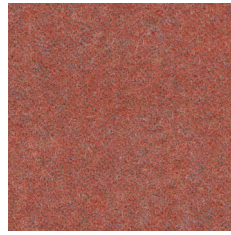
# Synergy

## Cat. 3

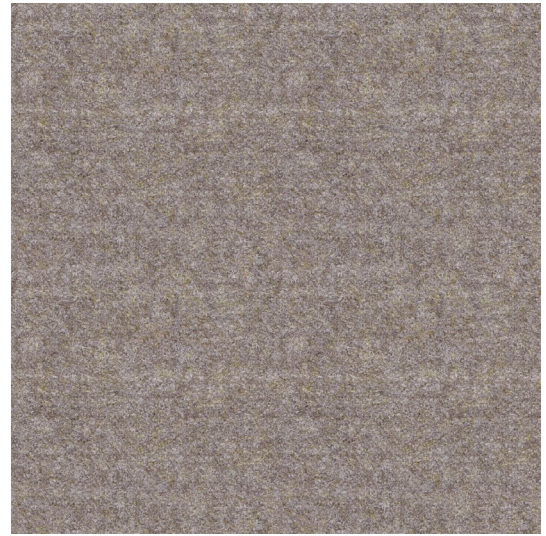
---



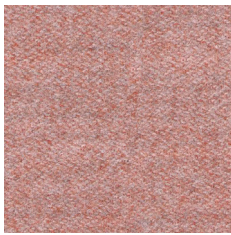
\* LDS84 S84



\* LDS73 S73



\* LDS32 S32



\* LDS74 S74



\* LDS37 S37



\* LDS45 S45



\* LDS49 S49



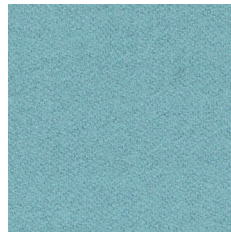
\* LDS48 S48



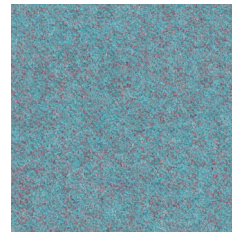
\* LDS42 S42



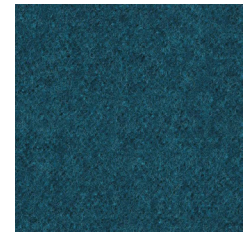
\* LDS46 S46



\* LDS55 S55



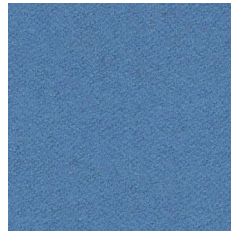
\* LDS56 S56



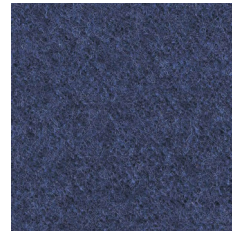
\* LDS59 S59



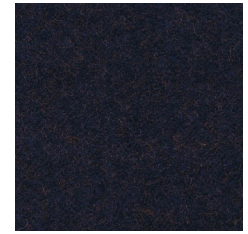
\* LDS08 S08



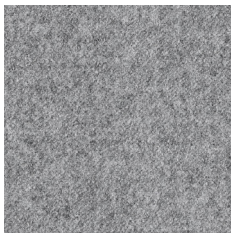
\* LDS63 S63



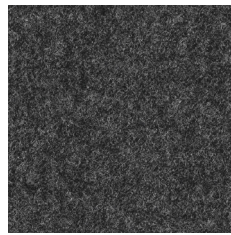
\* LDS62 S62



\* LDS61 S61



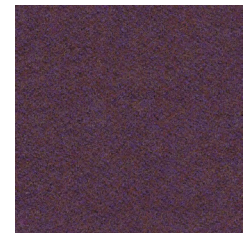
\* LDP16 S16



\* LDS17 S17



\* LDS27 S27



\* LDS70 S70



EN

Certified to the EU Ecolabel

Certified to Indoor Advantage™ “Gold”

### Composition

95% Virgin Wool, 5% Polyamide

### Weight

400 g/m<sup>2</sup>

### Abrasion resistance

100.000 Martindale cycles

### Flammability

BS EN 1021-1 (cigarette)  
BS EN 1021-2 (match)  
BS 7176 Low Hazard  
UNI 9175 Classe 1 IM  
EN 13501-1, D-s1, d0 (adhered)  
CAL TB 117  
ÖNORM B 3825  
ÖNORM A 3800-1

### Light fastness

5 (EN ISO 105-B02)

### Fastness to rubbing

wet: 4; dry: 4 (ISO 105-X12)

FR

Certifié conforme à l'écolabel européen

Certifié Indoor Advantage™ Gold

### Composition

95% Laine Vierge, 5% Polyamid

### Poids

400 g/m<sup>2</sup>

### Résistance à l'abrasion

100.000 Cycles Martindale

### Inflammabilité

BS EN 1021-1 (cigarette)  
BS EN 1021-2 (allumette)  
BS 7176 Low Hazard  
UNI 9175 Classe 1 IM  
EN 13501-1, D-s1, d0 (collé)  
CAL TB 117  
ÖNORM B 3825  
ÖNORM A 3800-1

### Stabilité à la lumière

5 (EN ISO 105-B02)

### Résistance au frottement

humide: 4; sec: 4 (ISO 105-X12)

DE

Zertifiziert nach EU Ecolabel

Zertifiziert gemäß Indoor Advantage™ „Gold“

### Zusammensetzung

95% Schurwolle, 5% Polyamid

### Gewicht

400 g/m<sup>2</sup>

### Abriebfestigkeit

100.000 Martindale-Zyklen

### Entflammbarkeit

BS EN 1021-1 (Zigarette)  
BS EN 1021-2 (Streichholz)  
BS 7176 Low Hazard  
UNI 9175 Classe 1 IM  
EN 13501-1, D-s1, d0 (anhaftend)  
CAL TB 117  
ÖNORM B 3825  
ÖNORM A 3800-1

### Lichtgeschwindigkeit

5 (EN ISO 105-B02)

### Reibechtheit

nass: 4; trocken: 4 (ISO 105-X12)

! Batch to batch variations in shade may occur within commercial tolerances.

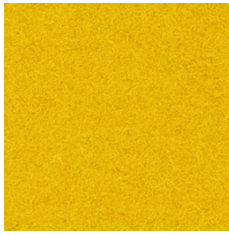
! Des variations de teinte d'un lot à l'autre peuvent se produire dans le cadre des tolérances commerciales.

! Innerhalb der handelsüblichen Toleranzen können Farbabweichungen von Charge zu Charge auftreten.

# Velito | Velito Presto

Cat. 3

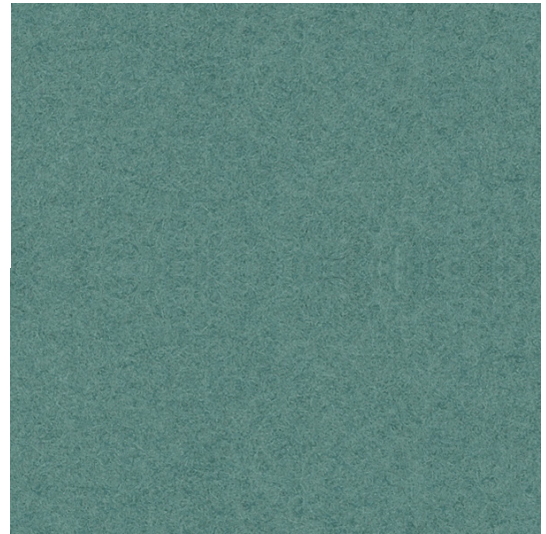
---



\*0512 GP3 | GC3



\*0540 GU4 | GZ4



\*0537 GT6 | GS6



\*0513 GU3 | GZ3



\*0570 GT4 | GS4



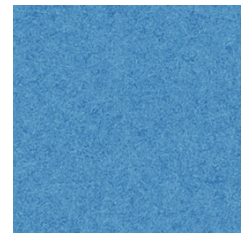
\*0535 GT5 | GS5



\*0527 GT3 | GS3



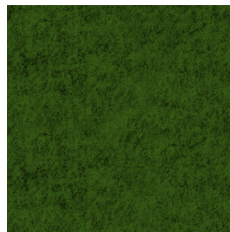
\*0549 GP1 | GC1



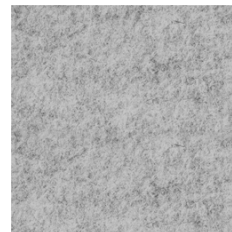
\*0538 GT1 | GS1



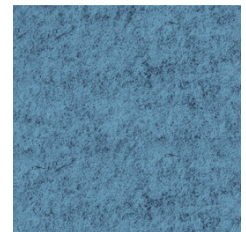
\*0530 GU5 | GZ5



\*0597 GT0 | GS0



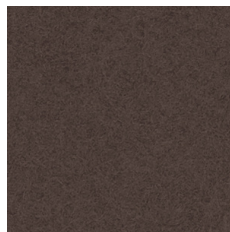
\*0556 GT8 | GS8



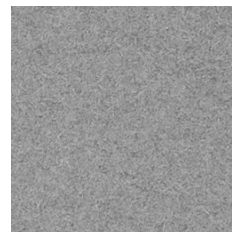
\*0548 GT9 | GS9



\*0511 GP5 | GC5



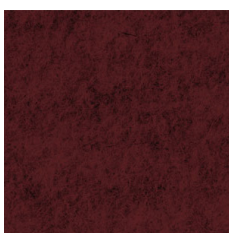
\*0560 GU8 | GZ8



\*02130 GT2 | GS2



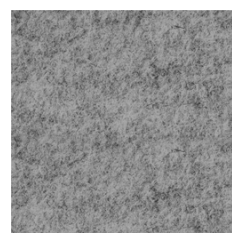
\*0516 GU6 | GZ6



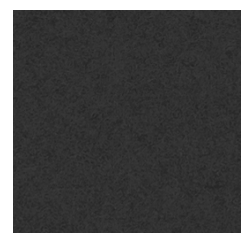
\*0510 GT7 | GS7



\*02128 GU9 | GZ9



\*0506 GU2 | GZ2



\*0599 GU1 | GZ1

# Velito



EN

## Composition

88% Wool, 12% Polyamide

## Weight

400 g/m<sup>2</sup>

## Abrasion resistance

120.000 Martindale cycles

## Flammability

BS EN 1021 - 1 (cigarette)  
BS EN 1021 - 2 (match)

## Light fastness

4 (EN ISO 105 - B02)

## Fastness to rubbing

wet: 5; dry: 5 (ISO 105 - X12)

FR

## Composition

88% Laine, 12% Polyamide

## Poids

400 g/m<sup>2</sup>

## Résistance à l'abrasion

120.000 Cycles Martindale

## Inflammabilité

BS EN 1021 - 1 (cigarette)  
BS EN 1021 - 2 (allumette)

## Stabilité à la lumière

4 (EN ISO 105 - B02)

## Résistance au frottement

humide: 5; sec: 5 (ISO 105 - X12)

DE

## Zusammensetzung

88% Wolle, 12% Polyamid

## Gewicht

400 g/m<sup>2</sup>

## Abriebfestigkeit

120.000 Martindale-Zyklen

## Entflammbarkeit

BS EN 1021 - 1 (Zigarette)  
BS EN 1021 - 2 (Streichholz)

## Lichtgeschwindigkeit

4 (EN ISO 105 - B02)

## Reibechtheit

nass: 5; trocken: 5 (ISO 105 - X12)

# Velito Presto



EN

## Composition

88% Wool, 12% Polyamide

## Weight

315 g/m<sup>2</sup>

## Abrasion resistance

100.000 Martindale cycles

## Flammability

BS EN 1021 - 1 (cigarette)  
BS EN 1021 - 2 (match)

## Light fastness

6 (EN ISO 105 - B02)

## Fastness to rubbing

wet: 5; dry: 5 (ISO 105 - X12)

FR

## Composition

88% Wool, 12% Polyamide

## Poids

315 g/m<sup>2</sup>

## Résistance à l'abrasion

100.000 Cycles Martindale

## Inflammabilité

BS EN 1021 - 1 (cigarette)  
BS EN 1021 - 2 (allumette)

## Stabilité à la lumière

6 (EN ISO 105 - B02)

## Résistance au frottement

humide: 5; sec: 5 (ISO 105 - X12)

DE

## Zusammensetzung

88% Wolle, 12% Polyamid

## Gewicht

315 g/m<sup>2</sup>

## Abriebfestigkeit

100.000 Martindale-Zyklen

## Entflammbarkeit

BS EN 1021 - 1 (Zigarette)  
BS EN 1021 - 2 (Streichholz)

## Lichtgeschwindigkeit

6 (EN ISO 105 - B02)

## Reibechtheit

nass: 5; trocken: 5 (ISO 105 - X12)

! Batch to batch variations in shade may occur within commercial tolerances.

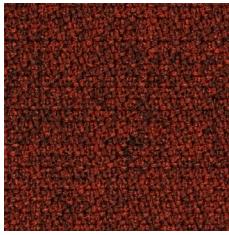
! Des variations de teinte d'un lot à l'autre peuvent se produire dans le cadre des tolérances commerciales.

! Innerhalb der handelsüblichen Toleranzen können Farbabweichungen von Charge zu Charge auftreten.

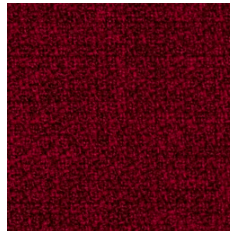
# Step | Step Melange

Cat. 2 | Cat.3

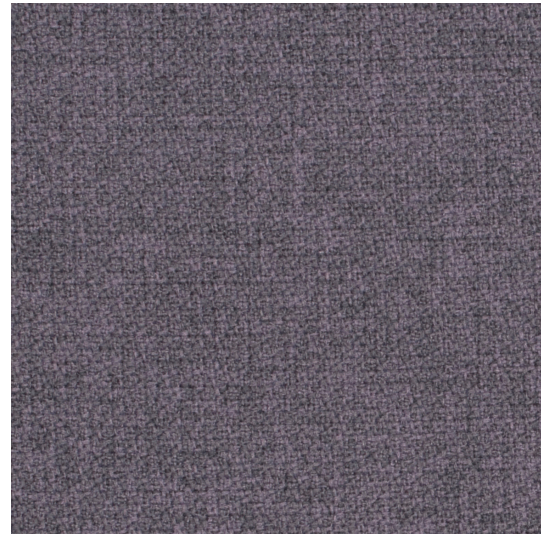
---



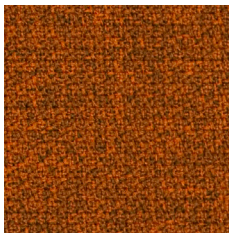
\*63075 L24



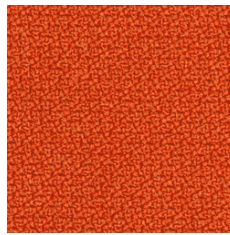
\*64013 L18



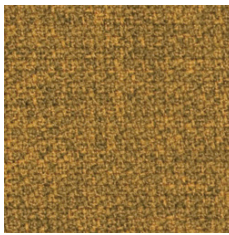
\*65093 LY2



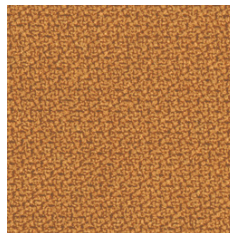
\*63082 L10



\*63082 L11



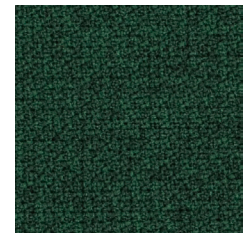
\*62057 L16



\*62057 L17



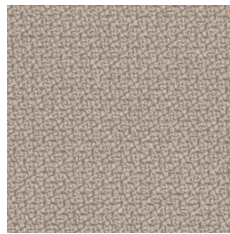
\*68119 L08



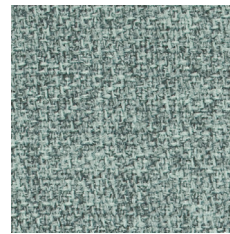
\*68161 L26



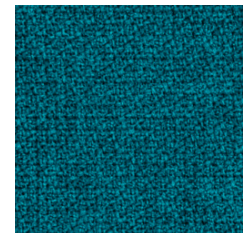
\*61104 L70



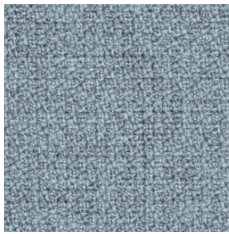
\*61149 L15



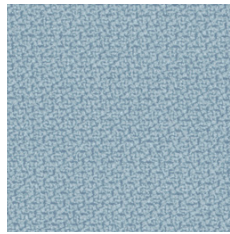
\*68118 L50



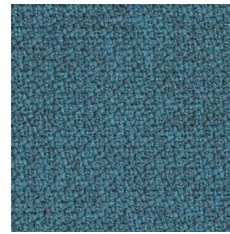
\*67007 L02



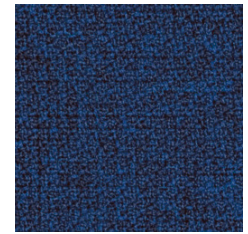
\*67004 L06



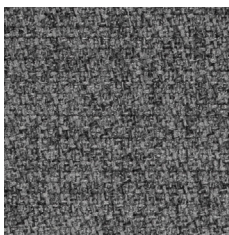
\*67004 L07



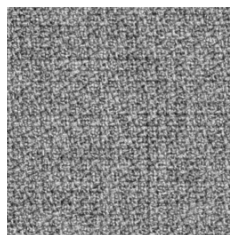
\*67072 L28



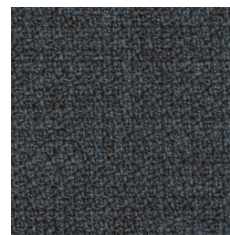
\*66149 L04



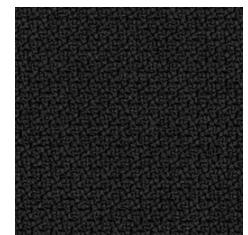
\*60011 L34



\*60004 L12



\*66019 L20



\*60999 L01

# Step | Step Melange



EN

Certified to OEKO-TEX® Standard 100

Certified to the EU Ecolabel

## Composition

100% Trevira CS® Flame Retardant Polyester

## Weight

470 g/m<sup>2</sup>

## Abrasion resistance

100.000 Martindale cycles

## Flammability

BS EN 1021-1 (Cigarette)

BS EN 1021-2 (Match)

BS 5852: part 1

BS 5852: part 2 (Crib 5)

BS 7176 Medium Hazard

UNI 9175 & UNI 9175/FA1 Classe 1 IM

DIN 4102 B1

NFP-P-92-503-512 M1

ÖNORM B 3825-B1-3800-Q1 UK

AM 18 - NF D 60-013 (only for fabric)

CA TB 117-2013

DIN EN 13501-1 B-s1, d0

## Light fastness

5-7 (EN ISO 105-B02)

## Fastness to rubbing

wet: 4-5; dry: 4-5 (ISO 105-X12)

FR

Certifié conforme à la norme OEKO-TEX® 100

Certifié conforme à l'écolabel européen

## Composition

100% Trevira CS® Polyester Inflammable

## Poids

470 g/m<sup>2</sup>

## Résistance à l'abrasion

100.000 Cycles de Martindale

## Inflammabilité

BS EN 1021-1 (Cigarette)

BS EN 1021-2 (Allumette)

BS 5852: part 1

BS 5852: part 2 (Crib 5)

BS 7176 Medium Hazard

UNI 9175 & UNI 9175/FA1 Classe 1 IM

DIN 4102 B1

NFP-P-92-503-512 M1

ÖNORM B 3825-B1-3800-Q1 UK

AM 18 - NF D 60-013 (uniquement pour les tissus)

CA TB 117-2013

DIN EN 13501-1 B-s1, d0

## Stabilité à la lumière

5-7 (EN ISO 105-B02)

## Résistance au frottement

humide: 4-5; sec: 4-5 (ISO 105-X12)

DE

Zertifiziert gemäß OEKO-TEX® Standard 100

Zertifiziert nach EU Ecolabel

## Zusammensetzung

100% Trevira CS® Flammhemmendes Polyester

## Gewicht

470 g/m<sup>2</sup>

## Abriebfestigkeit

100.000 Martindale-Zyklen

## Entflammbarkeit

BS EN 1021-1 (Zigarette)

BS EN 1021-2 (Streichholz)

BS 5852: part 1

BS 5852: part 2 (Crib 5)

BS 7176 Medium Hazard

UNI 9175 & UNI 9175/FA1 Classe 1 IM

DIN 4102 B1

NFP-P-92-503-512 M1

ÖNORM B 3825-B1-3800-Q1 UK

AM 18 - NF D 60-013 (nur für Stoff)

CA TB 117-2013

DIN EN 13501-1 B-s1, d0

## Lichtgeschwindigkeit

5-7 (EN ISO 105-B02)

## Reibechtheit

nass: 4-5; trocken: 4-5 (ISO 105-X12)

!

Cat. 2 applies to seating category products and Cat. 3 applies to screens and panels.

!

Batch to batch variations in shade may occur within commercial tolerances.

!

La cat. 2 s'applique aux produits de la catégorie sièges et la cat. 3 s'applique aux écrans et aux panneaux.

!

Des variations de teinte d'un lot à l'autre peuvent se produire dans le cadre des tolérances commerciales.

!

Kat. 2 gilt für Produkte der Kategorie Sitzmöbel und Kat. 3 gilt für Trennwände und Platten.

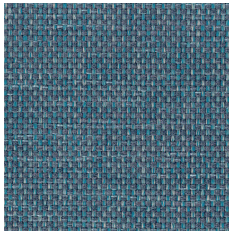
!

Innerhalb der handelsüblichen Toleranzen können Farbabweichungen von Charge zu Charge auftreten.

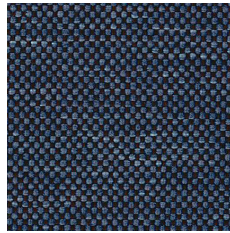
# Berta

## Cat. 1

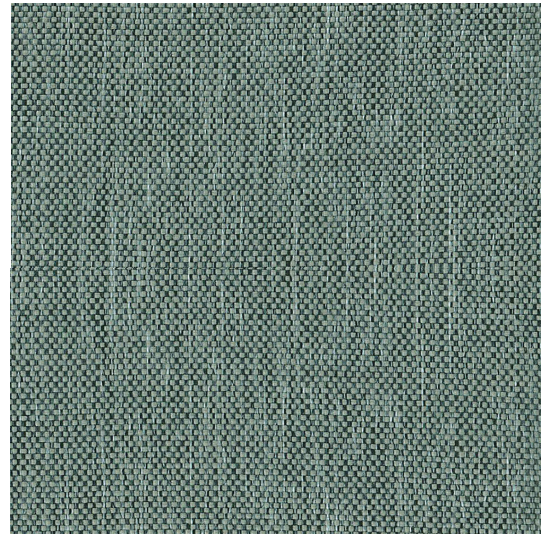
---



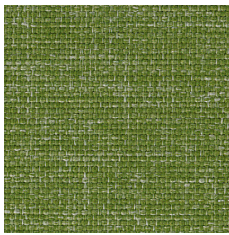
AD6



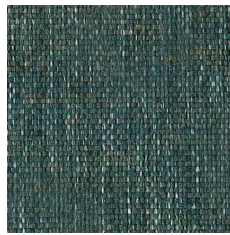
AD9



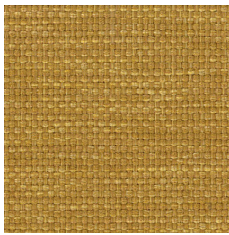
AI2



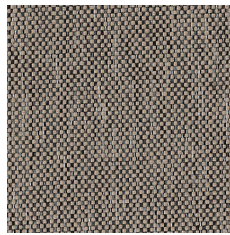
AI8



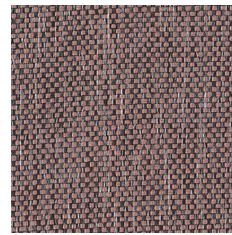
AI1



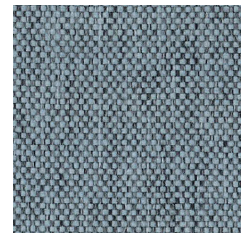
AD7



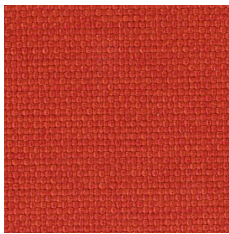
AI3



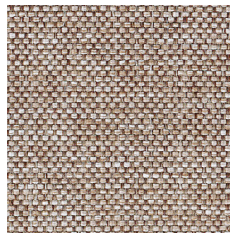
AI4



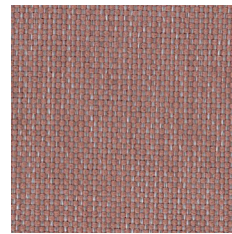
AI6



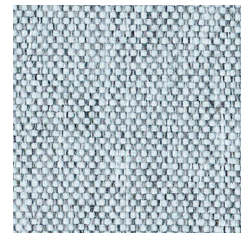
AI5



AD8



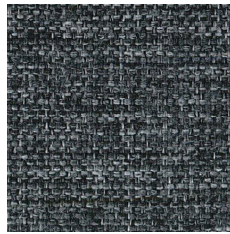
AI0



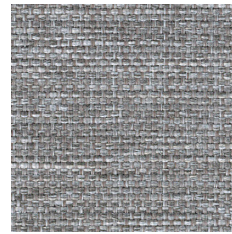
AI7



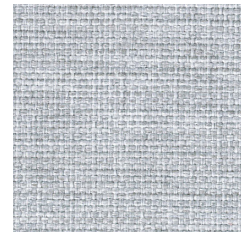
AD0



AD1



AD2



AD3



## For chairs and soft seating — EN

Certified to OEKO-TEX® Standard 100

**Composition**  
100% Polyester

**Weight**  
320 g/m<sup>2</sup>

**Abrasion resistance**  
150.000 Martindale cycles

**Flammability**  
BS EN 1021-1 (cigarette)  
BS EN 1021-2 (match)  
BS 5852: part 1

**Light fastness**  
6 (EN ISO 105-B02, EN ISO 105-A01)

**Fastness to rubbing**  
wet: 4-5; dry: 5 (ISO 105-X12)

## Pour sièges et sièges Lounge — FR

Certifié conforme à la norme OEKO-TEX® 100

**Composition**  
100% Polyester

**Poids**  
320 g/m<sup>2</sup>

**Résistance à l'abrasion**  
150.000 Cycles Martindale

**Inflammabilité**  
BS EN 1021-1 (cigarette)  
BS EN 1021-2 (allumette)  
BS 5852: part 1

**Stabilité à la lumière**  
6 (EN ISO 105-B02, EN ISO 105-A01)

**Résistance au frottement**  
humide: 4-5; sec: 5 (ISO 105-X12)

## Für Stühle und weiches Sitzen — DE

Zertifiziert gemäß OEKO-TEX® Standard 100

**Zusammensetzung**  
100% Polyester

**Gewicht**  
320 g/m<sup>2</sup>

**Abriebfestigkeit**  
150.000 Martindale-Zyklen

**Entflammbarkeit**  
BS EN 1021-1 (Zigarette)  
BS EN 1021-2 (Streichholz)  
BS 5852: part 1

**Lichtgeschwindigkeit**  
6 (EN ISO 105-B02, EN ISO 105-A01)

**Reibechtheit**  
nass: 4-5; trocken: 5 (ISO 105-X12)

## For screens — EN

Certified to OEKO-TEX® Standard 100

**Composition**  
100% Polyester

**Weight**  
340 g/m<sup>2</sup>

**Abrasion resistance**  
80.000 Martindale cycles

**Flammability**  
EN 1021-1

**Light fastness**  
6 (EN ISO 105-B02)

**Fastness to rubbing**  
wet: 4-5; dry: 5 (ISO 105-X12)

## Pour écrans — FR

Certifié conforme à la norme OEKO-TEX® 100

**Composition**  
100% Polyester

**Poids**  
340 g/m<sup>2</sup>

**Résistance à l'abrasion**  
80.000 Cycles Martindale

**Inflammabilité**  
EN 1021-1

**Stabilité à la lumière**  
6 (EN ISO 105-B02)

**Résistance au frottement**  
humide: 4-5; sec: 5 (ISO 105-X12)

## Für Abschirmungen — DE

Zertifiziert gemäß OEKO-TEX® Standard 100

**Zusammensetzung**  
100% Polyester

**Gewicht**  
340 g/m<sup>2</sup>

**Abriebfestigkeit**  
80.000 Martindale-Zyklen

**Entflammbarkeit**  
EN 1021-1

**Lichtgeschwindigkeit**  
6 (EN ISO 105-B02)

**Reibechtheit**  
nass: 4-5; trocken: 5 (ISO 105-X12)

! —————  
Batch to batch variations in shade may occur within commercial tolerances.

! —————  
Des variations de teinte d'un lot à l'autre peuvent se produire dans le cadre des tolérances commerciales.

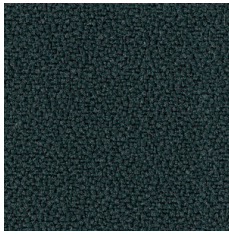
! —————  
Innerhalb der handelsüblichen Toleranzen können Farbabweichungen von Charge zu Charge auftreten.



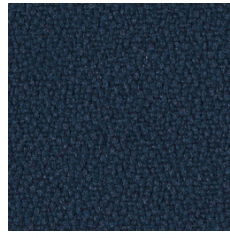
# Lucia

## Cat. 2

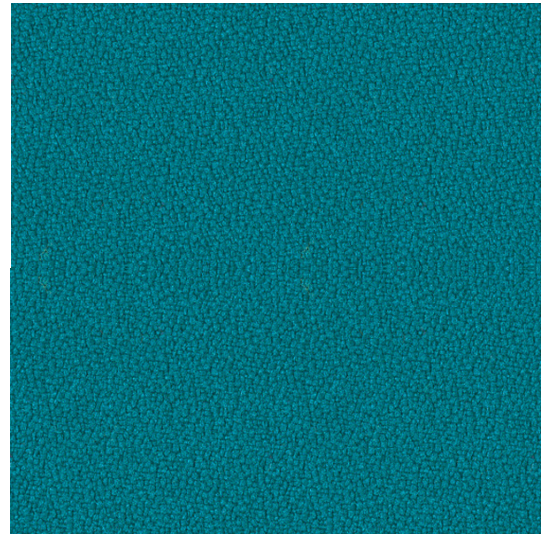
---



\* YB009 YE1



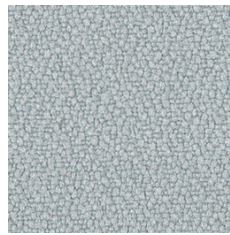
\* YB026 YE6



\* YB011 YH3



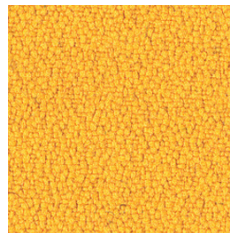
\* YB046 YF9



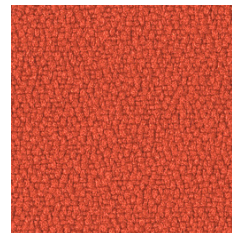
\* YB094 YE2



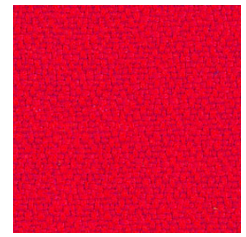
\* YB093 YF0



\* YB088 YH7



\* YB087 YE7



\* YB105 YH5

# Lucia



EN

## Composition

100% Recycled Polyester

## Weight

260 g/m<sup>2</sup>

## Flammability

BS EN 1021 - 1 (cigarette)

BS EN 1021 - 2 (match)

Lucia BS 7176 Low Hazard

Lucia BS 476 Part 7 Class 1

Lucia EN 13501-1 Adhered Class B, s1, d0

Lucia EN 13501-1 Un-adhered Class B, s1

## Light fastness

6 (EN ISO 105 - B02)

## Fastness to rubbing

wet: 4; dry: 4 (ISO 105 - X12)

FR

## Composition

100% Polyester recyclé

## Poids

260 g/m<sup>2</sup>

## Inflammabilité

EN 1021 - 1 Cigarette

EN 1021 - 2 Allumette

Lucia BS 7176 Low Hazard

Lucia BS 476 Part 7 Class 1

Lucia EN 13501-1 Adhered Class B, s1, d0

Lucia EN 13501-1 Un-adhered Class B, s1

## Stabilité à la lumière

6 (EN ISO 105 - B02)

## Résistance au frottement

humide: 4; sec: 4 (ISO 105 - X12)

DE

## Zusammensetzung

100% Recycling-Polyester

## Gewicht

260 g/m<sup>2</sup>

## Entflammbarkeit

BS EN 1021 - 1 (Zigarette)

BS EN 1021 - 2 (Streichholz)

Lucia BS 7176 Low Hazard

Lucia BS 476 Part 7 Class 1

Lucia EN 13501-1 Adhered Class B, s1, d0

Lucia EN 13501-1 Un-adhered Class B, s1

## Lichtgeschwindigkeit

6 (EN ISO 105 - B02)

## Reibechtheit

nass: 4; trocken: 4 (ISO 105 - X12)

!

Batch to batch variations in shade may occur within commercial tolerances.

!

Des variations de teinte d'un lot à l'autre peuvent se produire dans le cadre des tolérances commerciales.

!

Innerhalb der handelsüblichen Toleranzen können Farbabweichungen von Charge zu Charge auftreten.