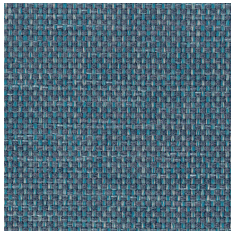
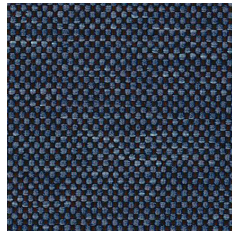


Cat. 1

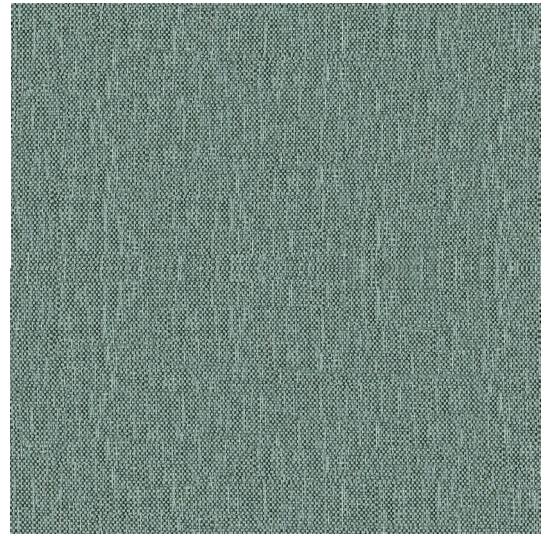
---



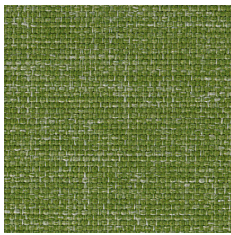
AD6



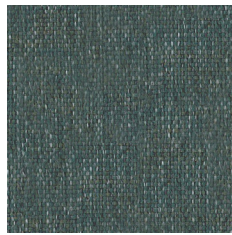
AD9



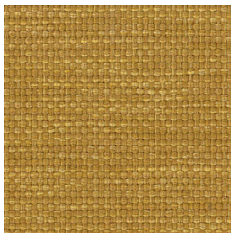
AI2



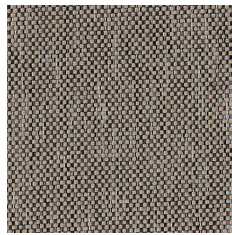
AI8



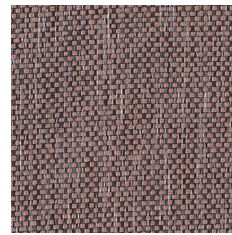
AI1



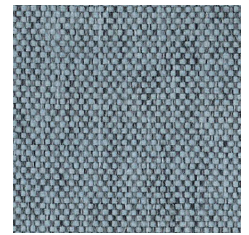
AD7



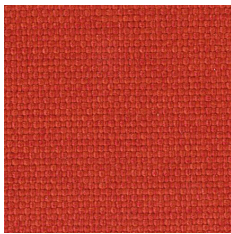
AI3



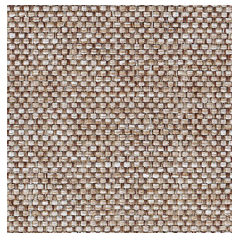
AI4



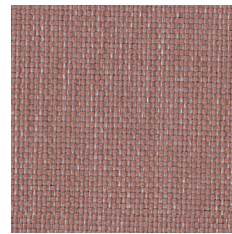
AI6



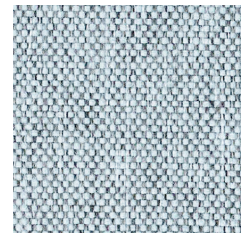
AI5



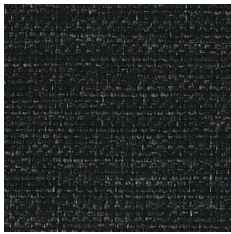
AD8



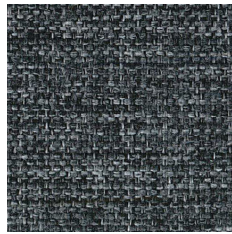
AI0



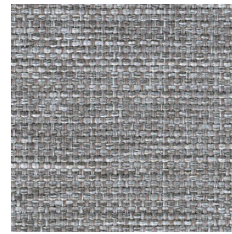
AI7



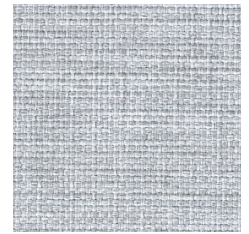
AD0



AD1



AD2



AD3

**For chairs and soft seating** — EN

Certified to OEKO-TEX® Standard 100

**Composition**  
100% Polyester

**Weight**  
320 g/m<sup>2</sup>

**Abrasion resistance**  
150.000 Martindale cycles

**Flammability**  
BS EN 1021-1 (cigarette)  
BS 5852: part 1

**Light fastness**  
6 (EN ISO 105-B02, EN ISO 105-A01)

**Fastness to rubbing**  
wet: 4-5; dry: 5 (ISO 105-X12)

**Pour sièges et sièges Lounge** — FR

Certifié conforme à la norme  
OEKO-TEX® 100

**Composition**  
100% Polyester

**Poids**  
320 g/m<sup>2</sup>

**Résistance à l'abrasion**  
150.000 Cycles Martindale

**Inflammabilité**  
BS EN 1021-1 (cigarette)  
BS 5852: part 1

**Stabilité à la lumière**  
6 (EN ISO 105-B02, EN ISO 105-A01)

**Résistance au frottement**  
humide: 4-5; sec: 5 (ISO 105-X12)

**Für Stühle und weiches Sitzen** — DE

Zertifiziert gemäß OEKO-TEX®  
Standard 100

**Zusammensetzung**  
100% Polyester

**Gewicht**  
320 g/m<sup>2</sup>

**Abriebfestigkeit**  
150.000 Martindale-Zyklen

**Entflammbarkeit**  
BS EN 1021-1 (Zigarette)  
BS 5852: part 1

**Lichtgeschwindigkeit**  
6 (EN ISO 105-B02, EN ISO 105-A01)

**Reibechtheit**  
nass: 4-5; trocken: 5 (ISO 105-X12)

**For screens** — EN

Certified to OEKO-TEX® Standard 100

**Composition**  
100% Polyester

**Weight**  
340 g/m<sup>2</sup>

**Abrasion resistance**  
80.000 Martindale cycles

**Flammability**  
BS EN 1021-1 (cigarette)

**Light fastness**  
6 (EN ISO 105-B02, EN ISO 105-A01)

**Fastness to rubbing**  
wet: 4-5; dry: 5 (ISO 105-X12)

**Pour écrans** — FR

Certifié conforme à la norme  
OEKO-TEX® 100

**Composition**  
100% Polyester

**Poids**  
340 g/m<sup>2</sup>

**Résistance à l'abrasion**  
80.000 Cycles Martindale

**Inflammabilité**  
BS EN 1021-1 (cigarette)

**Stabilité à la lumière**  
6 (EN ISO 105-B02, EN ISO 105-A01)

**Résistance au frottement**  
humide: 4-5; sec: 5 (ISO 105-X12)

**Für Abschirmungen** — DE

Zertifiziert gemäß OEKO-TEX®  
Standard 100

**Zusammensetzung**  
100% Polyester

**Gewicht**  
340 g/m<sup>2</sup>

**Abriebfestigkeit**  
80.000 Martindale-Zyklen

**Entflammbarkeit**  
BS EN 1021-1 (Zigarette)

**Lichtgeschwindigkeit**  
6 (EN ISO 105-B02, EN ISO 105-A01)

**Reibechtheit**  
nass: 4-5; trocken: 5 (ISO 105-X12)

! —————  
Batch to batch variations in shade may  
occur within commercial tolerances.

! —————  
Des variations de teinte d'un lot à l'autre  
peuvent se produire dans le cadre des  
tolérances commerciales.

! —————  
Innerhalb der handelsüblichen  
Toleranzen können Farbabweichungen  
von Charge zu Charge auftreten.