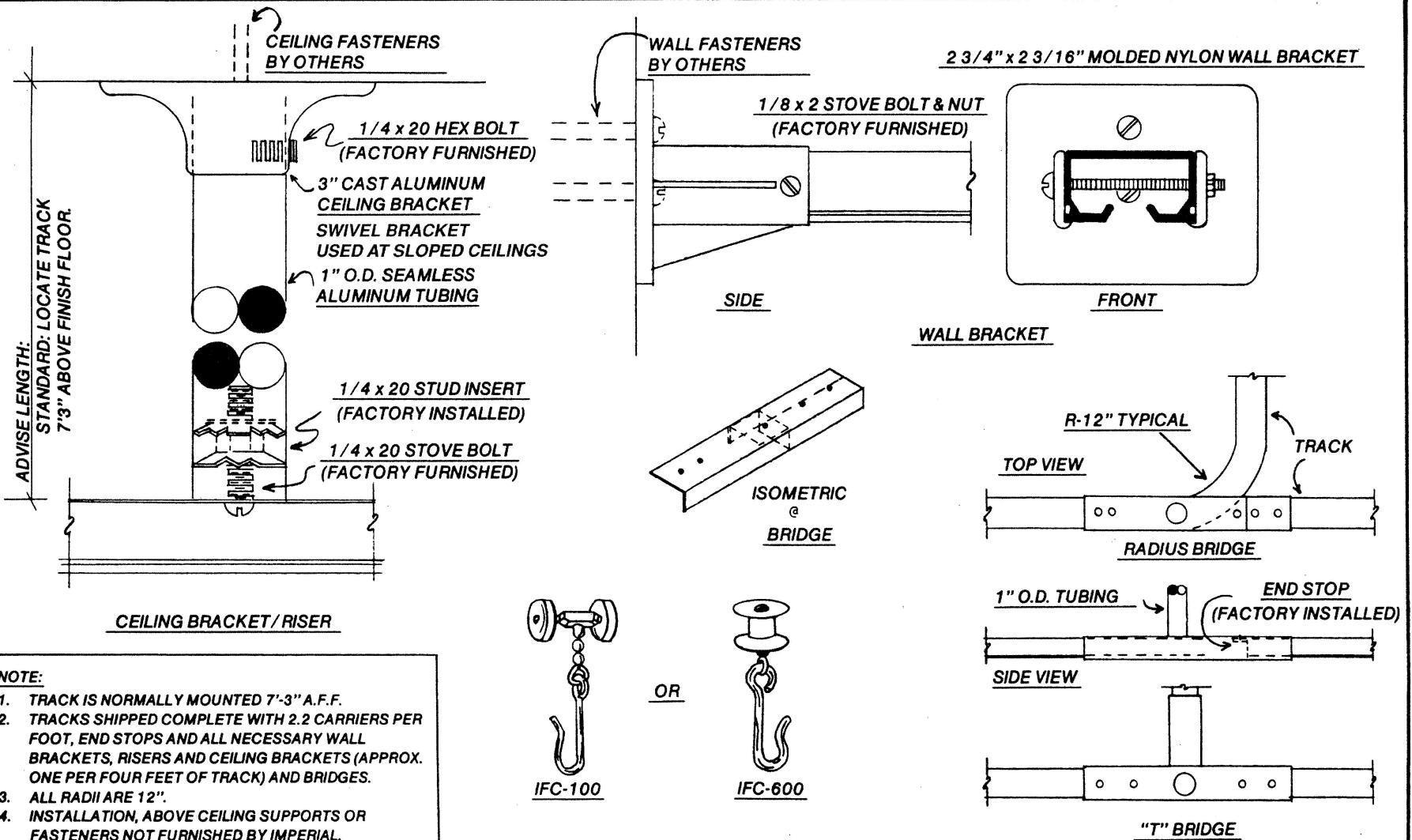


TYPICAL IFC-98 SUSPENDED CUBICLE TRACK PARTS DETAILS

TO INSTALL IFC-98 SUSPENDED CUBICLE TRACK, CHECK WALL AND CEILING CONSTRUCTION TO DETERMINE TYPE AND SIZE OF FASTENERS REQUIRED. LOCATE AND MOUNT WALL BRACKETS AS REQUIRED. PLACE TRACK TEMPORARILY IN WALL BRACKETS AND SUPPORT FROM FLOOR WITH TEMPORARY BRACES. LOCATE AND MOUNT CEILING BRACKETS AS REQUIRED, DRILL CORRESPONDING HOLES IN TRACK TO ATTACH RISERS. FASTEN RISERS TO TRACK AND TO CEILING BRACKETS. LOCATE AND FASTEN RADIUS (OR "T") BRIDGES AS REQUIRED. SECURE TRACK TO WALL BRACKET. DETERMINE QUANTITY OF CARRIERS REQUIRED (COUNT GROMMETS IN CURTAIN) AND INSERT IN TRACK PRIOR TO SECURING TRACK TO WALL BRACKET.



NOTE:

1. TRACK IS NORMALLY MOUNTED 7'-3" A.F.F.
2. TRACKS SHIPPED COMPLETE WITH 2.2 CARRIERS PER FOOT, END STOPS AND ALL NECESSARY WALL BRACKETS, RISERS AND CEILING BRACKETS (APPROX. ONE PER FOUR FEET OF TRACK) AND BRIDGES.
3. ALL RADII ARE 12".
4. INSTALLATION, ABOVE CEILING SUPPORTS OR FASTENERS NOT FURNISHED BY IMPERIAL.



OR

