



Official Licensed Product



MERCEDES-EQ
FORMULA E TEAM

Rear Tire Changing Instructions



Prefer digital? Scan the QR code for our
[YouTube assembly guide](#)

Disclaimer

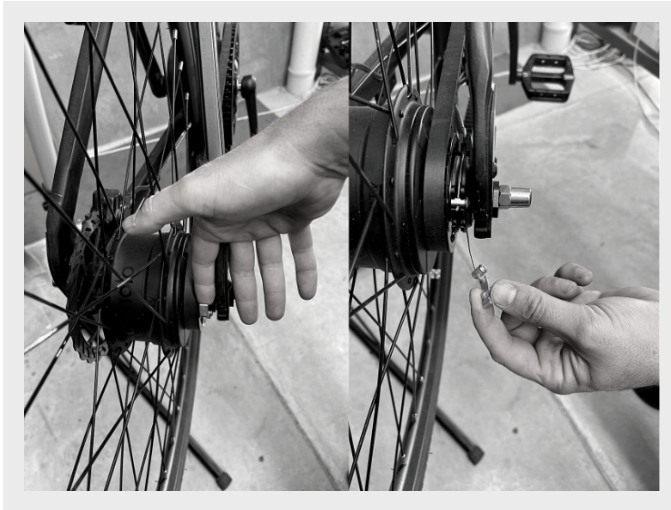
Please note your bike warranty does not cover incorrect assembly or installation of parts. To find a recommended service centre near you, please head to nplusbikes.com, or alternatively a local reputable bike shop.



Search to scan for a servicing center near you.



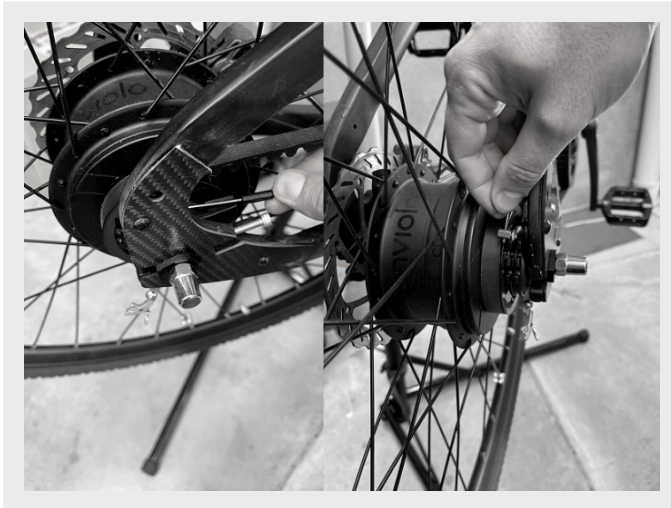
1/ Firstly, remove the gear cable brackets on the right side of the rear hub.



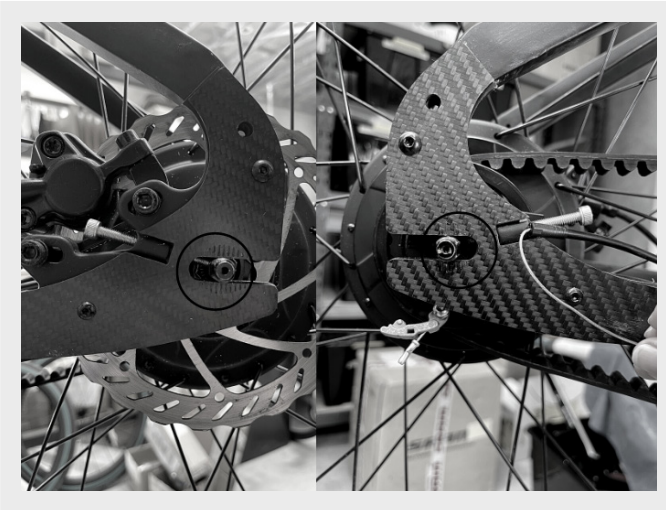
2/ Remove the bolts on both sides of the rear wheel with a 15mm spanner.



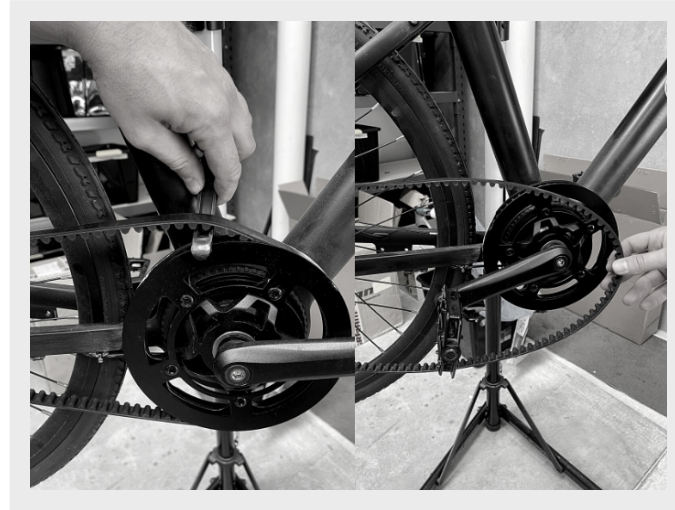
3/ Unscrew the belt tensioner on both sides with a 5mm allen key.



4/ Ensure that the screw is no longer touching on both sides.



6/ Gently remove the carbon belt using a plastic tire lever.



5/ Check that tension in the belt has been removed by squeezing the belt.



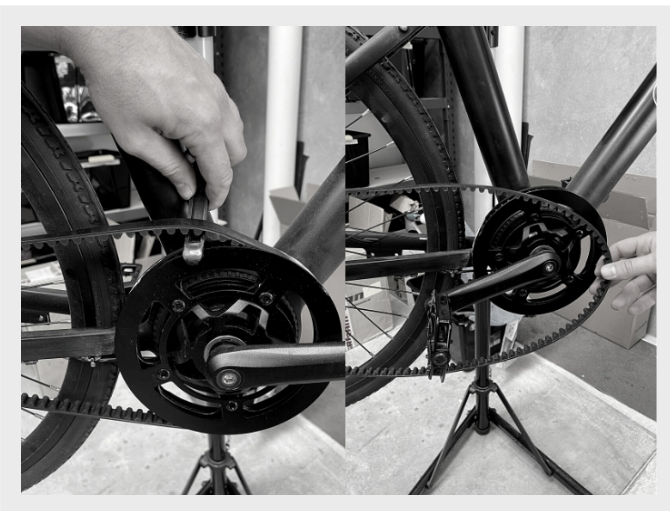
7/ Firmly grip the bike frame and pull the rear wheel backwards to remove.



8/ Gently pry the tire using tire levers.



9/ Replace the tire onto the rim, starting with positioning the Presta valve attachment. Make sure the tire is spinning in the right direction.





Contact us

Support


US: +1 833-631-0071

UK/EU: +44 808 304 8296

AU: +61 1800 319 714

EMAIL support@nplusbikes.com

Get social

 @nplusbikes_

 @nplusbikes

Official Licensed Product



MERCEDES-EQ
FORMULA E TEAM