

# Assembly Instructions

## Summit Rivet Shelving

SRVS1583 / SRVS1894 / SRVS18124 / SRVS1896 / SRVS18126

**Tools required:**

- Hammer or Rubber Mallet.

**Recommendations:**

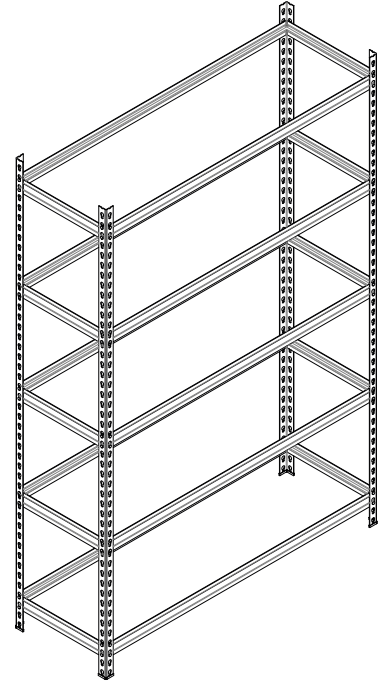
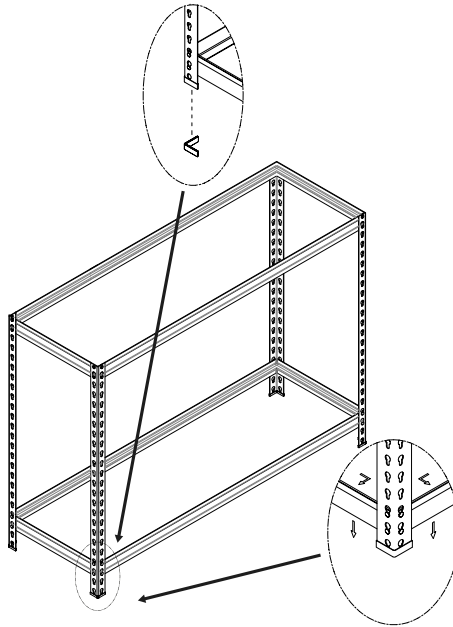
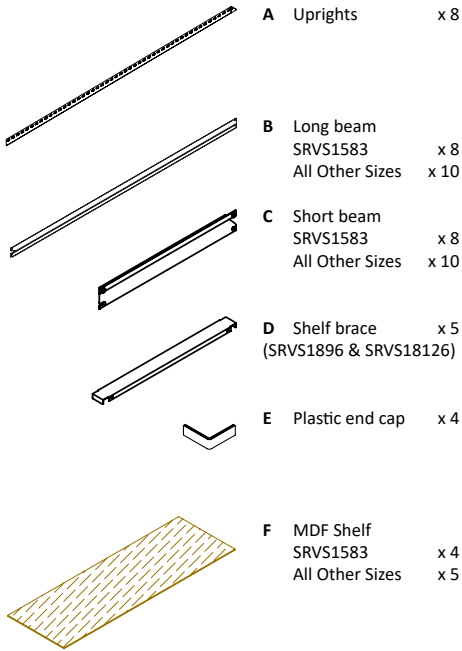
- Use a cloth or wooden block to protect components when hammering.
- Hammer gently to avoid component damage.
- Assembly is recommend with two people.

**Caution:**

- Wear gloves during assembly.
- Handle components with care due to possible sharp corners.
- Assemble the unit on a solid, level surface.

**Parts List**

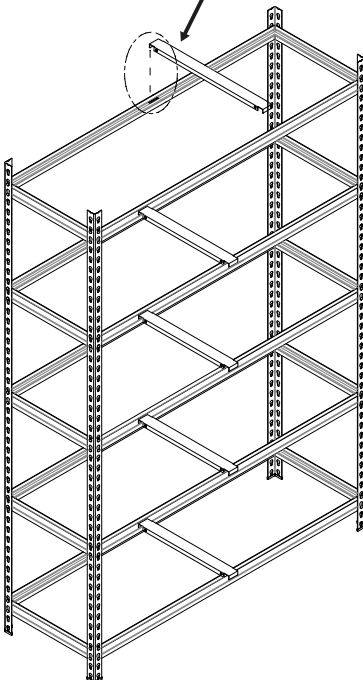
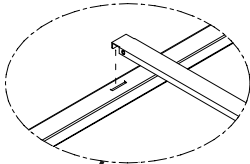
Please read through all the instructions and verify that all parts are present before beginning assembly.



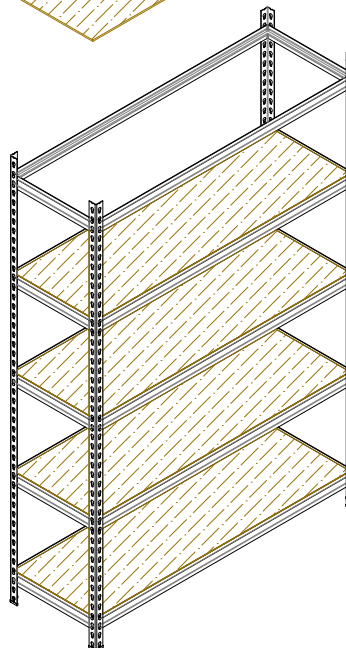
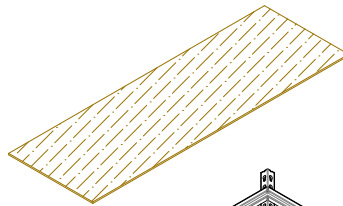
**Step 1** - Start by joining a long beam and a short beam to an upright. Be sure to have the flat edge of the beams facing up. Repeat for each upright and attach the plastic end caps as shown. Create a second shelf level to join the upright halves.

**Step 2** - Complete the frame by adding the remaining uprights and adding shelf levels at desired height.\*

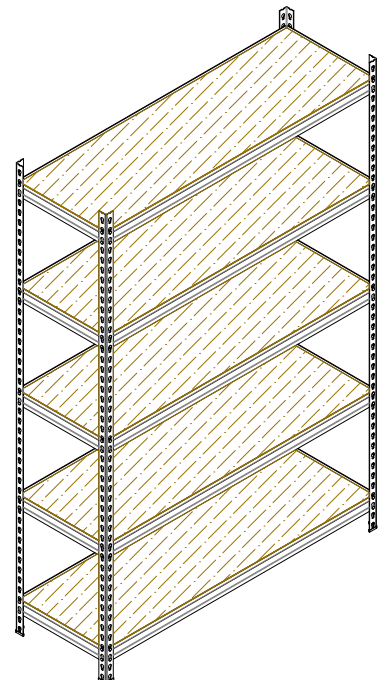
\* **Note:** Centre beam is fixed height, spanning the join between lower and upper frame sections.



**Step 3** - \*\*SRVS1896 & SRVS18126 ONLY\*\*  
Insert the shelf braces at each level.  
Shelf braces included in the 600D units only.



**Step 4** - Beginning at the bottom and working your way up, insert the MDF shelves.



**Step 5** - Complete assembly and move unit into place. For added stability shelving should be anchored to a wall - parts sold separately.