

# Respiratory ventilation products Critical care

United States catalog



# Table of contents

AVEA® ventilator products .....	1–6
VELA® ventilator products.....	7–11
EnVe® ventilator products .....	12–17
Bird® Blender products .....	18–21
3100A and 3100B High-Frequency Oscillatory Ventilator (HFOV) products.....	22–27
Infant Flow® nCPAP products .....	28–33
Index.....	34

# AVEA® ventilator products



# AVEA accessories



**16465**  
**AVEA neonatal hotwire flow sensor**  
 Reusable, each



**50000-40035**  
**AVEA water trap for expiratory system**  
 Reusable, each



**33985**  
**AVEA water trap bottle for expiratory system**  
 Reusable, each



**51000-40640**  
**AVEA removable exhalation cartridge**  
 Reusable, each



**33987**  
**AVEA bacterial filter**  
 Reusable, each



**22095**  
**AVEA water trap adapter replacement**  
 Reusable, each



**51000-02736**  
**Legacy "Bear" circuit support hanger**  
 Each



**69300A** Circuit support arm with side rail mount bracket (PN 09526)  
**69300** Circuit support arm without side rail mount bracket (PN 09526)



**09526**  
**Side rail mount bracket**



**34403**  
**Circuit support arm (PN 69300) circuit holder**  
 Pack of 3



**15619**  
Nurse call cable open



**15620**  
Nurse call cable closed



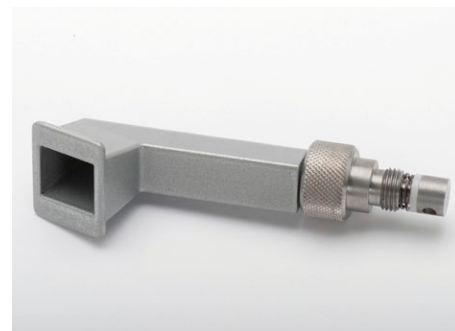
**33915**  
AVEA filter, guard assembly cooling fan  
Each



**71670**  
AVEA fan filter  
Pack of 5



**68289**  
Sensor, oxygen with connector



**11938**  
Aeroneb nebulizer stand mounting kit  
Rail mount bracket (PN 09526) required



Cat. no.	Description
<b>51000-40897</b>	Fitting, assembly, air inlet, DISS
<b>51000-40888</b>	Fitting, assembly, air inlet, NIST
<b>16144</b>	Fitting, assembly, air inlet, air liquide
<b>16173</b>	Fitting, assembly, air inlet, male DISS
<b>16131</b>	Fitting, assembly, heliox and air, DISS
<b>16132</b>	Fitting, assembly, heliox and air, NIST
<b>16149</b>	Fitting, assembly, heliox and air, air liquide
<b>16174</b>	Fitting, assembly, heliox and air, male DISS



# AVEA consumables



**51000-40094**  
**AVEA adult flow sensor**  
Single patient use, each

**50000-40031**  
**AVEA adult flow sensor**  
Single patient use, pack of 10



**51000-40098**  
**AVEA neonatal flow sensor**  
Single patient use, each

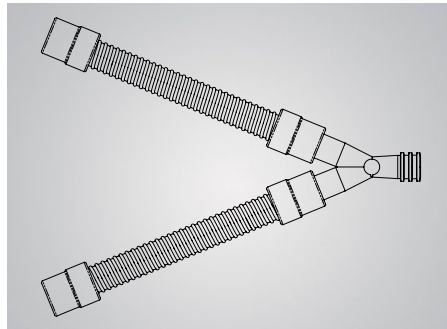
**50000-40038**  
**AVEA neonatal flow sensor**  
Single patient use, pack of 10



**11395**  
**AVEA exhalation filter**  
Single patient use, box of 12



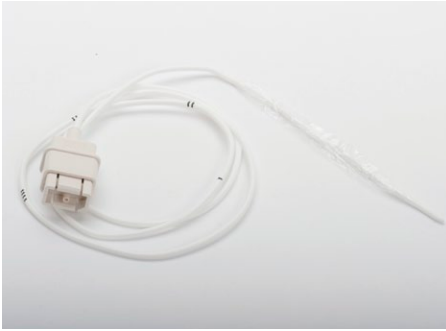
**11790**  
**AVEA expiratory filter water trap**  
Single patient use, box of 12



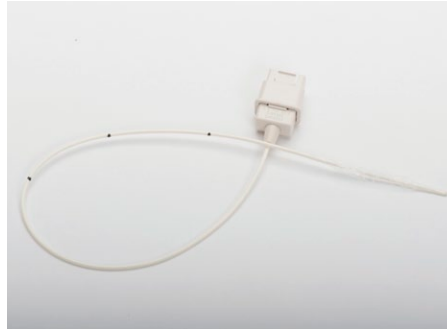
**16044**  
**Patient breathing circuit kit, 48"**

**16045**  
**Patient breathing circuit kit, 72"**

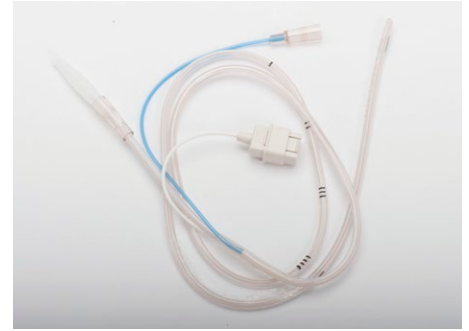
# AVEA esophageal pressure monitoring consumables



**7003100**  
**Esophageal pressure monitoring tube set**  
8 Fr, adult  
Single patient use, box of 10



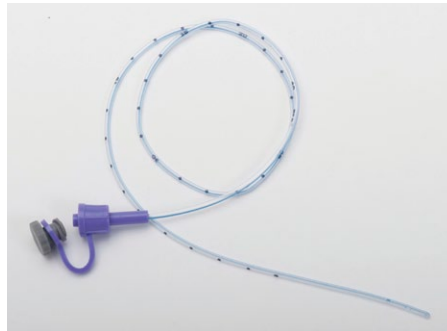
**7003401**  
**Esophageal pressure monitoring tube set**  
6 Fr, pediatric  
Single patient use, box of 10



**7003300**  
**Adult nasogastric esophageal pressure monitoring tube**  
16 Fr, with esophageal balloon  
Single patient use, box of 10



**7003402**  
**Pediatric nasogastric esophageal pressure monitoring tube**  
7 Fr, with esophageal balloon  
Single patient use, box of 10



**79018**  
**Tracheal monitoring tube**  
Single patient use, each

**10635**  
**Tracheal monitoring tube**  
Single patient use, box of 10



**50000-09960**  
**Extension esophageal pressure monitoring tube**  
Single patient use, each

**50000-09920**  
**Extension esophageal pressure monitoring tube**  
Single patient use, box of 10



**50000-40034**  
**Tracheal catheter adapter**  
Single patient use, box of 10

# AVEA volumetric capnography accessories



**11732**  
**Capnography hardware upgrade kit**  
Capnostat® 5 sensor cable (PN 27695-001), disposable sensors (PN 16605 and 16606) and (PN 63733) Capnography software key included. Ventilator software 4.1 or newer only



**27695-001**  
**Capnostat® 5 sensor cable**  
CO<sub>2</sub> sensor assembly  
Reusable, each



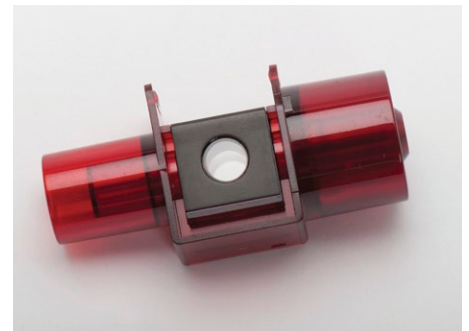
**16605**  
**CO<sub>2</sub> adapter, adult/pediatric**  
Single patient use, box of 10



**16606**  
**CO<sub>2</sub> adapter, neonatal**  
Single patient use, box of 10



**16607**  
**CO<sub>2</sub> adapter, adult/pediatric**  
Reusable, each



**16608**  
**CO<sub>2</sub> adapter, neonatal**  
Reusable, each



# VELA<sup>®</sup> ventilator products



# VELA accessories



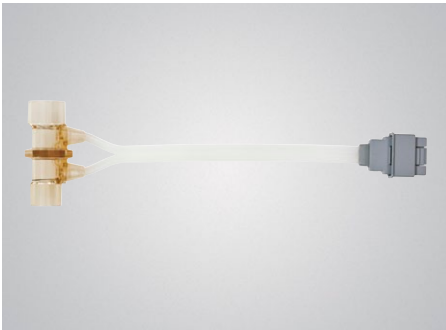
**16496**  
**VELA Diamond flow sensor**  
Reusable, each



**16240D**  
**VELA Diamond exhalation valve diaphragm**  
Reusable, pack of 10



**10384D**  
**VELA II exhalation valve diaphragm**  
Reusable, pack of 10



**15972**  
**VELA II flow sensor**  
Reusable, each



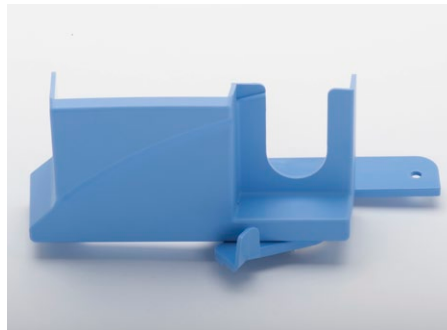
**20005**  
**Exhalation valve body**  
(VELA II and Diamond) Reusable, each



**15619**  
**Nurse call cable open**



**12194**  
**Oximeter mount**  
For use with transport stand  
(PN 11540 or 15987 only)



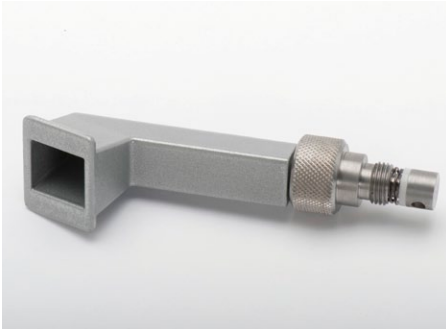
**11539**  
**Exhalation outlet cover kit**  
For use ONLY with VELA Diamond series,  
stands (PN 11536 or PN 11540), and  
flow sensor (PN 16496)



**15620**  
**Nurse call cable closed**



**11540**  
**Transport stand**  
(Includes support arm PN 69300)



**11938**  
Aeroneb nebulizer stand mounting kit



**69300**  
Circuit support arm



**34403**  
Circuit support arm (PN 69300) circuit holder  
Pack of 3



**11536**  
Basic stand  
Support arm not included



**21782**  
Cylinder rings  
For use with transport stand (PN 11540)



**21773**  
Basic breakdown stand  
Pole, base and casters



**21778**  
Handle  
For use with PN 21773



**21774**  
Adapter mounting plate  
For use with PN 21773



**21775**  
Adapter mounting post  
For use with PN 21773



**21780**  
IV pole



**40624**  
Screw  
For use with transport stand (PN 11540)



**45038**  
Split washer  
For use with transport stand screw (PN 40624)

# VELA capnography accessories



**27695-001**  
**Capnostat® 5 sensor cable**  
CO<sub>2</sub> sensor assembly  
Reusable, each



**16605**  
**CO<sub>2</sub> adapter, adult/pediatric**  
Single patient use, box of 10



**16607**  
**CO<sub>2</sub> adapter, adult/pediatric**  
Reusable, each

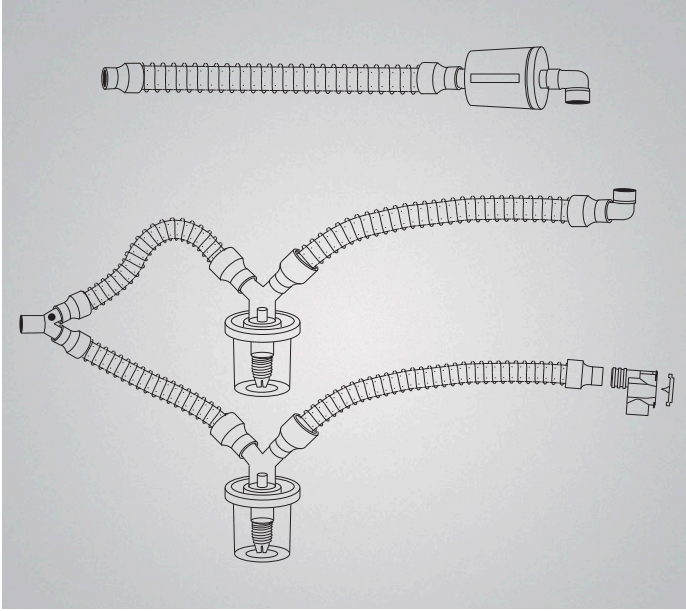


**17509**  
**Partial capnography upgrade kit**  
Included: Power box (PN 16546),  
Capnostat 5 sensor cable (PN 27695-001),  
box of 10 single patient use adult/pediatric  
CO<sub>2</sub> adapters (PN 16605)  
Does not include capnography activation  
software.



**16546**  
**Capnography power box/monitor interface**

**16920**  
**Full capnography upgrade kit**  
Included: Power box (PN 16546),  
Capnostat 5 sensor cable (PN 27695-001),  
box of 10 single patient use adult/pediatric  
CO<sub>2</sub> adapter (PN 16605)  
Includes capnography software with  
activation.



## 11571

### VELA Diamond pediatric breathing circuit kit

Included: Circuit tubing, 18" smooth bore; main flow bacteria filter; 90° elbow adapter; 22 mm ID cuff adapter; circuit tubing, 30" smooth bore; watertrap, autoclavable; tapered plug, 7.5 mm male; wye connector; exhalation valve body; Diamond exhalation valve diaphragm

## 11570

### VELA Diamond adult breathing circuit kit

Included: Circuit tubing, 18" smooth bore; main flow bacteria filter; 90° elbow adapter; 22 mm ID cuff adapter; circuit tubing, 30" smooth bore; watertrap, autoclavable; tapered plug, 7.5 mm male; wye connector; exhalation valve body; Diamond exhalation valve diaphragm

## 10684

### VELA II adult breathing circuit kit

Included: Circuit tubing, 18" smooth bore; main flow bacteria filter; 90° elbow adapter; 22 mm ID cuff adapter; circuit tubing, 30" smooth bore; watertrap, autoclavable; tapered plug, 7.5 mm male; wye connector; exhalation valve body; VELA II exhalation valve diaphragm

Cat. no.	Description
<b>09531</b>	Circuit tubing, 30" smooth bore (use 09531D for a pack of 10)
<b>09532</b>	Circuit tubing, 18" smooth bore (use 09532D for a pack of 10)
<b>09534</b>	Main flow bacteria filter
<b>04709</b>	90° elbow adapter
<b>09413</b>	Watertrap, autoclavable
<b>4124</b>	Tapered plug, 7.5 mm male
<b>20225</b>	Wye connector
<b>00423</b>	22 mm ID cuff adapter (use 00423D for a pack of 10)



# EnVe<sup>®</sup> ventilator products





**19270-001**  
 Docking station, protective cover, power cord and operator manual



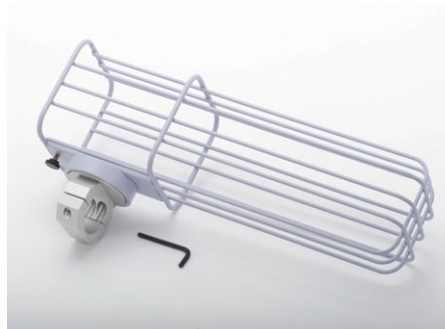
**21380-001**  
 Protective collar, docking station



**24737-001**  
 PTV® Transport Bracket for bed rail and pole mounting. Includes PalmTop™ mounting accessory and clamp.  
 Packaged preassembled.



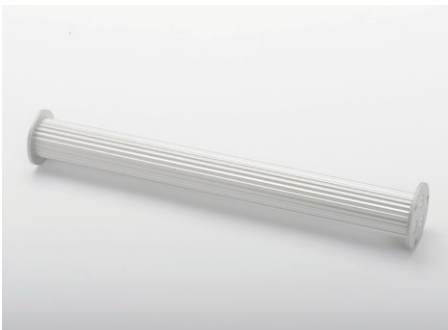
**24736-001**  
 PTV Transport Bracket for L-Track mounting. Includes PalmTop mounting accessory and semi-permanent hardware.  
 Assembly required.



**004-13914-001**  
 PTV stand O<sub>2</sub> cylinder basket holder



**004-12140-001**  
 PTV patient circuit support arm



**004-13886-001**  
 PTV wall mount humidifier pole



**004-18862-001**  
 PTV wall mount (purple)  
 Circuit support arm kit (PN 004-13885-001) included

# EnVe accessories



**004-19937-001**  
**PTV mounting base**  
For use with docking station  
(PN 004-19270-001)



**004-19574-001**  
**PTV desktop mounting stand**



**004-12103-001**  
**PTV AC adapter power kit**  
AC adapter and power cord included



**004-13955-001**  
**PTV desktop battery charger**  
with 110 VAC power cord  
(batteries not included)



**004-13908-001**  
**PTV lithium-ion**  
Hot-swappable battery  
Each



**004-19495-001**  
**PTV protective collar, replacement kit**



**004-19833-001**  
**PTV fan filter**  
Pack of 10



**004-13063-001**  
**PTV VOXP data adapter and cable**



**004-19826-001**  
**PTV air inlet filter**  
Each



**004-12695-002**  
**PTV carry case**



**004-12102-001**  
**PTV automobile charger**  
Each



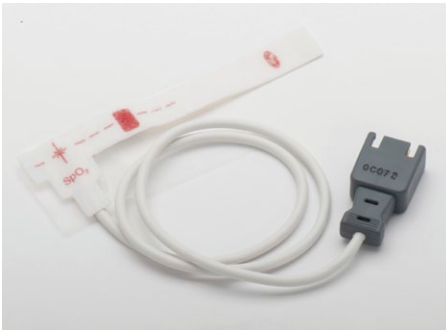
**004-18602-001**  
SpO<sub>2</sub> module  
Cable only, each



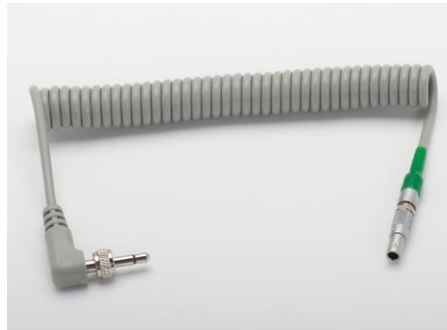
**004-19461-001**  
SpO<sub>2</sub> clip sensor, pediatric  
Reusable, each



**004-13035-001**  
SpO<sub>2</sub> clip sensor, adult  
Reusable, each



**004-19462-001**  
SpO<sub>2</sub> reflectance sensor  
Each



**004-13897-001**  
PTV cable, FiO<sub>2</sub>  
Each



**004-13036-001**  
FiO<sub>2</sub> sensor  
Each



**004-13037-001**  
FiO<sub>2</sub> sensor T piece  
Reusable, each



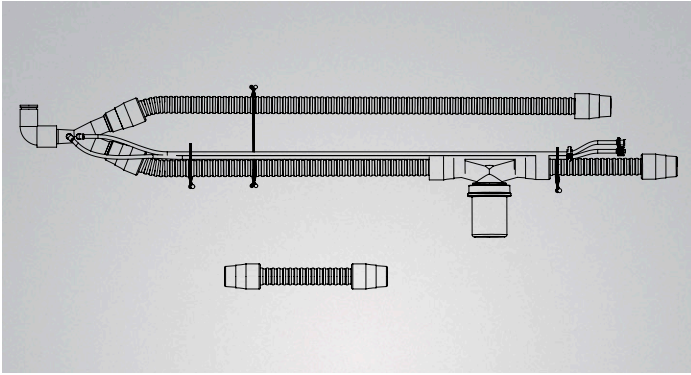
**004-13038-001**  
FiO<sub>2</sub> sensor T piece  
Single patient use, box of 10

**Ventilator accessories sold but not shown**

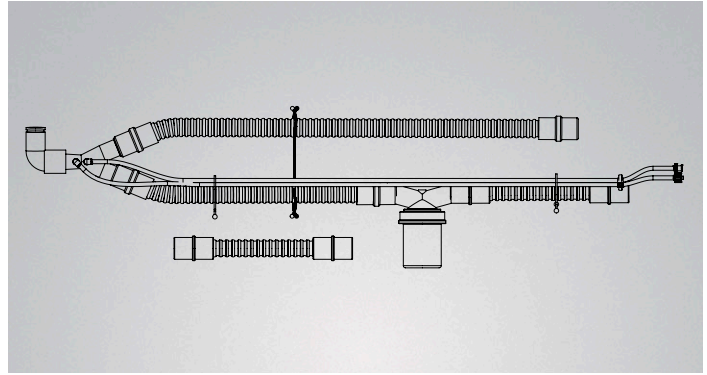
Cat. no.	Description	Qty.
<b>004-13912-001</b>	PTV roll stand includes circuit support arm (P/N 004-12140-001)	Each
<b>004-19463-001</b>	SpO <sub>2</sub> Flexi-Form II, adult, single patient use	Box of 10
<b>004-19464-001</b>	SpO <sub>2</sub> Flexi-Form II, pediatric, single patient use	Box of 10
<b>004-19465-001</b>	SpO <sub>2</sub> Flexi-Form II, infant, single patient use	Box of 24
<b>004-19827-001</b>	Exhalation diaphragms, kit	Pack of 10
<b>004-19828-001</b>	Expiratory port, kit	Each



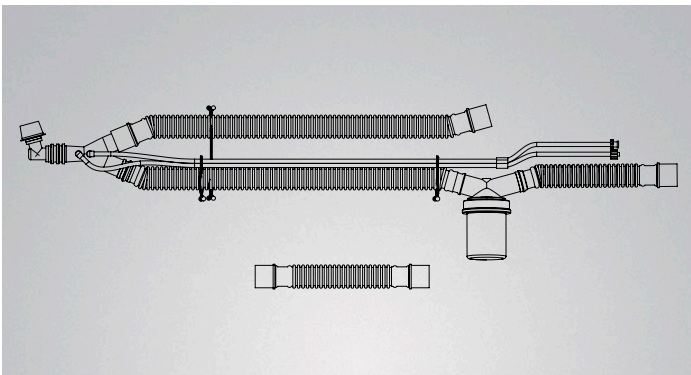
# EnVe circuits



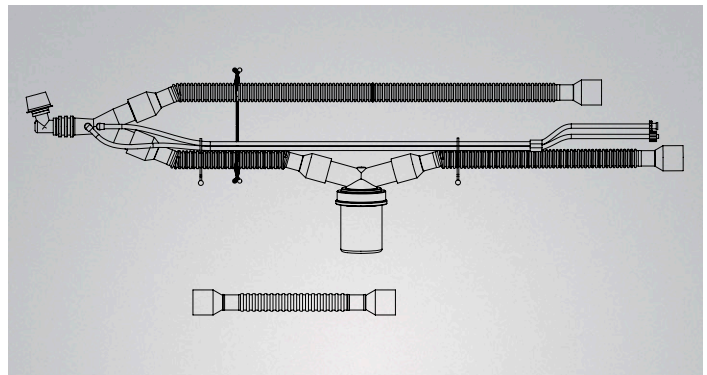
**004-18220-001**  
**Patient circuit adult**  
Non-heated  
Reusable, each



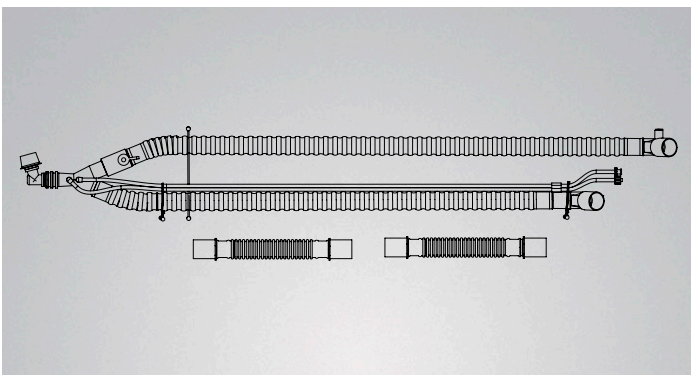
**004-18227-001**  
**Patient circuit pediatric**  
Non-heated  
Reusable, each



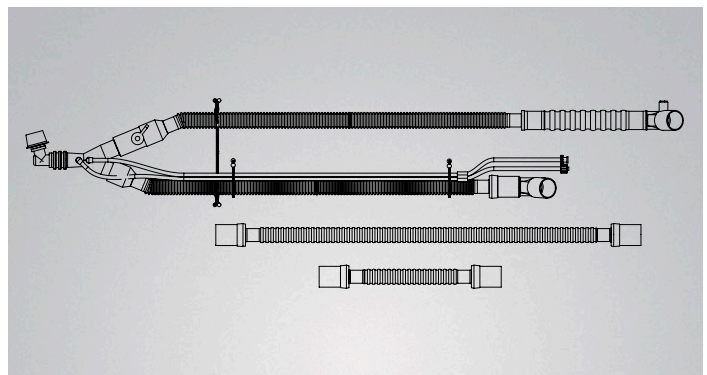
**004-18221-101**  
**Patient circuit adult**  
Non-heated  
Single patient use, box of 10



**004-18228-101**  
**Patient circuit pediatric**  
Non-heated  
Single patient use, box of 10

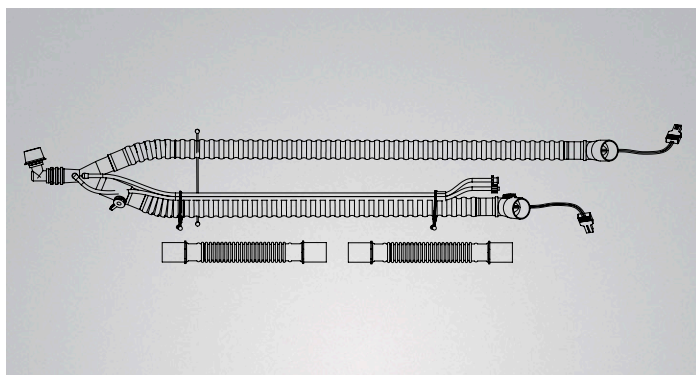


**004-18223-101**  
**Fisher & Paykel MR850 humidifier**  
Patient circuit adult, dual heated limb  
Single patient use, box of 10

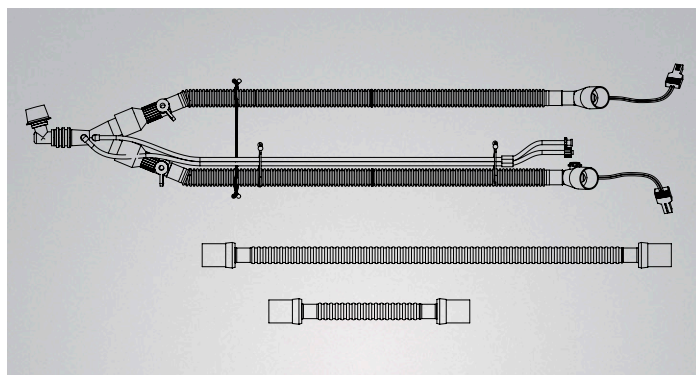


**004-18230-101**  
**Fisher & Paykel MR850 humidifier**  
Patient circuit pediatric, dual heated limb  
Single patient use, box of 10





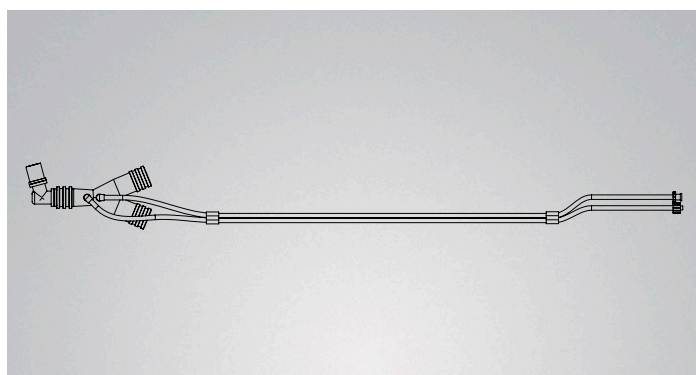
**004-19211-001**  
**Teleflex patient circuit adult**  
Dual heated limb  
Single patient use, box of 10



**004-19212-001**  
**Teleflex, patient circuit pediatric**  
Dual heated limb  
Single patient use, box of 10



**004-18225-001**  
**Patient circuit wye with flow sensor**  
Reusable, each



**004-18226-101**  
**Patient circuit wye with flow sensor**  
Single patient use, box of 10

# Bird® Blender products





**03800A**  
High flow MicroBlender without hoses



**10030A**  
MRI high flow MicroBlender without hoses



**03803T**  
OmniBlender without hoses, triple outlet



UltraBlender low flow



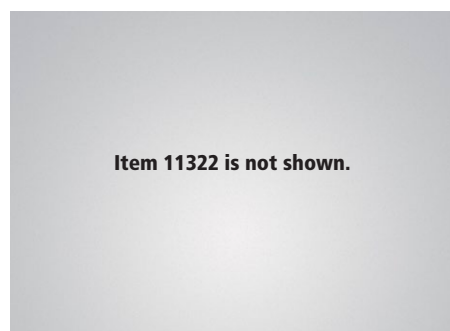
**03920A**  
Low flow MicroBlender without hoses  
DISS



**15625**  
Sentry Blender/Analyzer, high flow  
DISS, without hoses

Cat. no.	Description
<b>10040A</b>	0.15–1.0/2–16 LPM, DISS
<b>10041A</b>	0.5–5.0/2–16 LPM, DISS
<b>10042A</b>	1.0–10.0/2–16 LPM, DISS
<b>10046A</b>	2–16/2–16 LPM, DISS
<b>10047A</b>	0.15–1.0/1.0–10.0 LPM, DISS
<b>10048A</b>	0.5–5.0/1.0–10.0 LPM, DISS
<b>10049A</b>	1.0–10.0/1.0–10.0 LPM, DISS

**16694A**  
Sentry Blender/Analyzer, low flow  
DISS, without hoses



Item 11322 is not shown.

**11322**  
Low flow blender with 2-16 LPM flow meter  
DISS

# Bird Blender accessories



**2688-332**  
90° elbow adapter



**66045**  
Oxygen sensor, galvanic with flow diverter  
For 15 mm port



**09220**  
Flowmeter, 0–15 LPM oxygen  
DISS, male



**07426**  
Air inlet water trap/filter assembly



**03869H**  
Auxiliary assembly outlet  
9/16–18, 03800



**04322**  
Pole mount blender bracket



**05141**  
Female dovetail bracket



**05213**  
Female dovetail wall bracket



**09437**  
Rail mount blender bracket



**09440**  
Rail mount bracket



**01468**  
Connector  
9/16" (3-way), 2 male and 1 female



**03837**  
Connector, tailpiece  
Oxygen, 7/16-27



**20254**  
Connector, inlet, air, MicroBlender  
NIST



**20255**  
Connector, inlet, oxygen, MicroBlender  
NIST



**32042**  
Adapter, oxygen  
DISS x 1/4" tube



# 3100A and 3100B High-Frequency Oscillatory Ventilator (HFOV) products





**467377**  
**Fisher & Paykel humidifier MR850**  
 115 V, with capital orders only  
**69754**  
**Fisher & Paykel humidifier MR850**  
 230 V, with capital orders only



**768965**  
**Humidifier mounting bracket**  
 For use with Teleflex



**768968**  
**Humidifier mounting bracket**  
 For use with Fisher & Paykel MR730 and MR850



**770134**  
**Fisher & Paykel autofeed pole**



**770135**  
**Adapter bracket**  
 For use with Fisher & Paykel humidifier base and autofeed pole



**770136**  
**Fisher & Paykel**  
 Autofeed pole and bracket kit

## Blender and accessories



**10273**  
**Blender kit**  
 One blender, air tee/hose assembly and gas output hose



**10112**  
**Air tee/hose assembly**

Blender and accessories items sold but not shown

Cat. no.	Description
<b>463605</b>	Hose, oxygen (green)
<b>463606</b>	Hose, air (yellow)
<b>9220</b>	Flow meter 0–15 LPM DISS

## 3100A and 3100B HFOV accessories



**766586**  
Driver cover plate



**770566**  
Circuit cradle



**767138**  
Support arm for use with adjustable cradle

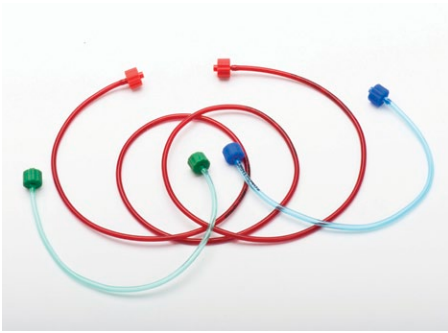


**462364**  
Thumb screw for support arm and cradle

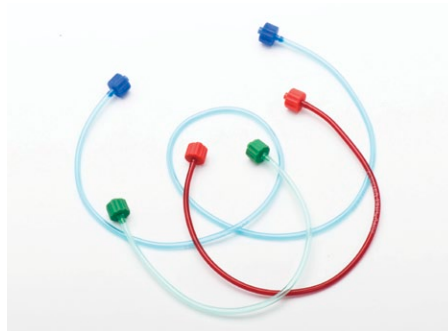
---

### Accessories and service items sold but not shown.

Cat. no.	Description	Qty.
<b>765742</b>	Circuit hold down strap	Each
<b>767163</b>	Air inlet filter element	Pack of 10
<b>766798</b>	Column lint filter element	Each
<b>465298</b>	Krytox inert grease	2 oz. tube
<b>765759</b>	3100A HFOV patient circuit calibration label	Each
<b>772754</b>	3100B HFOV patient circuit calibration label	Each



**11437**  
**Connecting tubing set, unfiltered circuits**  
Red, blue and green tubing  
Each



**11438**  
**Connecting tubing set, filtered circuits**  
Red, blue and green tubing  
Each



**766897**  
**Bellows and water trap set**  
Box of 4



**766896**  
**Cap diaphragm set**  
Box of 4



**12151**  
**Inspiratory filters**  
Box of 12



**12152**  
**Expiratory filters**  
Box of 25



**480029**  
**Circuit port adapter for nitric oxide sampling**



**772793**  
**Exhaled gas deflector**

## Unfiltered circuits



Cat. no.	Description	Qty.
<b>771374</b>	Fisher & Paykel MR730 humidifier flexible circuit with short heated wire <i>(for heated environment)</i>	Box of 4
<b>771375</b>	Fisher & Paykel MR730 humidifier flexible circuit with long heated wire <i>(for non-heated environment)</i>	Box of 4
<b>773996</b>	Fisher & Paykel MR850 humidifier flexible circuit with short heated wire <i>(for heated environment)</i>	Box of 4
<b>773997</b>	Fisher & Paykel MR850 humidifier flexible circuit with long heated wire <i>(for non-heated environment)</i>	Box of 4
<b>771463</b>	Teleflex 380-90/ConchaTherm III humidifier 16 V, flexible circuit with short heated wire <i>(for heated environment)</i>	Box of 4
<b>771465</b>	Teleflex 380-88/ConchaTherm IV humidifier 21 V, flexible circuit with short heated wire <i>(for heated environment)</i>	Box of 4
<b>771466</b>	Teleflex 380-88/ConchaTherm IV humidifier 21 V, flexible circuit with long heated wire <i>(for non-heated environment)</i>	Box of 4

### Unfiltered circuits sold but not shown

Cat. no.	Description	Qty.
<b>766895</b>	Rigid patient circuit body without heated wire	Box of 4

## Filtered circuits



Cat. no.	Description	Qty.
<b>11518-730S</b>	Fisher & Paykel MR730 humidifier flexible filtered circuit with short heated wire <i>(for heated environment)</i>	Box of 4
<b>11518-730L</b>	Fisher & Paykel MR730 humidifier flexible filtered circuit with long heated wire <i>(for non-heated environment)</i>	Box of 4
<b>11518-850S</b>	Fisher & Paykel MR850 humidifier flexible filtered circuit with short heated wire <i>(for heated environment)</i>	Box of 4
<b>11518-850L</b>	Fisher & Paykel MR850 humidifier flexible filtered circuit with long heated wire <i>(for non-heated environment)</i>	Box of 4
<b>11518-16VS</b>	Teleflex 380-90/ConchaTherm III humidifier 16 V, flexible filtered circuit with short heated wire <i>(for heated environment)</i>	Box of 4
<b>11518-21VS</b>	Teleflex 380-88/ConchaTherm IV humidifier 21 V, flexible filtered circuit with short heated wire <i>(for heated environment)</i>	Box of 4
<b>11518-21VL</b>	Teleflex 380-88/ConchaTherm IV humidifier 21 V, flexible filtered circuit with long heated wire <i>(for non-heated environment)</i>	Box of 4

### Notes:

Short heated wires are for heated environments, such as radiant warmers or isolettes.  
Long heated wires are for unheated environments, such as cribs, bassinet or beds.



## Unfiltered circuits

Pre-packaged kit for all required supplies—circuit, bellows, water trap, cap diaphragms and connecting tubing. Box of four complete kits. Humidifier chamber not included.



Cat. no.	Description	Qty.
<b>11744-730K</b>	Fisher & Paykel MR730 humidifier flexible circuit with heated wire kit	Box of 4
<b>11744-850K</b>	Fisher & Paykel MR850 humidifier flexible circuit with heated wire kit	Box of 4
<b>11744-HRCK</b>	Teleflex 380-88, ConchaTherm IV (21 V), flexible circuit with heated wire, Teleflex ConchaTherm III/IV kit	Box of 4

## Filtered circuits

One inspiratory and expiratory filter and a cap diaphragm set. Expiratory filter needs to be changed every 24 hours. Inspiratory filter does not need routine changing.



Cat. no.	Description	Qty.
<b>16390-101</b>	Fisher & Paykel MR730 humidifier flexible filtered circuit with heated wire	Box of 4
<b>16390-102</b>	Fisher & Paykel MR850 humidifier flexible filtered circuit with heated wire	Box of 4
<b>16390-103</b>	Teleflex 380-88, ConchaTherm IV (21 V) flexible filtered circuit with heated wire	Box of 4

# Infant Flow® nCPAP products





**777237-101**  
Infant Flow SiPAP stand with IV pole and basket  
**777237-102**  
Infant Flow SiPAP stand with basket only



**777238**  
IV pole, only  
For use with SiPAP stand



**777243**  
Fisher & Paykel MR730 and MR850 humidifier bracket



**467377**  
Fisher & Paykel MR850 humidifier  
115 V, with capital orders only



**466423**  
Fisher & Paykel MR730 and MR850 humidifier pole clamp



**770135**  
Fisher & Paykel Pole mounting bracket  
For attaching auto feed pole



**770136**  
Fisher & Paykel auto feed pole  
For use with MR850 humidifier



**770134**  
Fisher & Paykel auto feed pole  
For use with MR730 humidifier

# Infant Flow SiPAP accessories



**466952**  
Fisher & Paykel MR850 heated wire adapter ("pigtail")

**480044**  
Fisher & Paykel MR559  
Heated wire adapter MR730

**480038**  
Fisher & Paykel humidifier adapter kit



**467375**  
Fisher & Paykel MR850 temperature probe  
Dual right angle, 72"

**467376**  
Fisher & Paykel MR850 temperature probe  
Dual right angle 60"

**772211**  
Fisher & Paykel MR730 temperature probe  
Dual right angle, 72"



**777248**  
Teleflex humidifier bracket  
Neptune or RCI ConchaTherm humidifier

**466448**  
Teleflex humidifier pole mount clamp  
ConchaTherm humidifier



**467349**  
Infant Flow respiratory abdominal sensors  
Single patient use, box of 25



**677-002**  
Infant Flow SiPAP transducer assembly



**D1420/100**  
Infant Flow baffle/filter  
Single patient use, box of 20



**777215**  
Infant Flow extension tube  
Single patient use, pack of 10



**775728**  
Infant Flow bonnet straps  
Single patient use, pack of 20



## 777200LP

### Infant Flow LP generator kit without nasal prongs

Included: Dual-jet, variable flow generator and sizing guide

Single patient use, box of 10



## 777202LP

### Infant Flow LP generator kit with nasal prongs

Included: Dual-jet, variable flow generator, sizing guide and small, medium and large nasal prongs

Single patient use, box of 10



## 7772010

### Infant Flow LP starter kit

Included: 5 Infant Flow LP generator kits with S, M, L prongs; 2 XS, S, SM, M, L and XL headgear sizes; 2 XS, S, SM, M, L and XL nasal masks sizes; 2 XL nasal prongs; and 2 XS nasal prongs

Single patient use



## 7772011

### Infant Flow LP generator kit/Fisher & Paykel MR730 or MR850 breathing circuit

Included: Infant Flow LP generator kit with prongs and neonatal, single-limb, heated breathing circuit

Single patient use, box of 10

## 7772021

### Infant Flow LP generator kit/Fisher & Paykel MR730 or MR850 breathing circuit

Included: Infant Flow LP generator kit with nasal prongs and neonatal, single-limb, heated breathing circuit

Single patient use, box of 20



## Nasal masks

For use only with the Infant Flow LP generator

Single patient use, pack of 10

Cat. no.	Color	Size
<b>777002XS</b>	Green	Extra small
<b>777002S</b>	Pink	Small
<b>777002M</b>	Blue	Medium
<b>777002L</b>	Purple	Large
<b>777002XL</b>	Clear	Extra large



## Nasal prongs

For use only with the Infant Flow LP generator

Single patient use, pack of 10

Cat. no.	Color	Size
<b>777000XS</b>	Green	Extra small
<b>777000S</b>	Pink	Small
<b>777000M</b>	Blue	Medium
<b>777000L</b>	Purple	Large
<b>777000XL</b>	Clear	Extra large



# Infant Flow LP headgear and bonnets

## Headgear

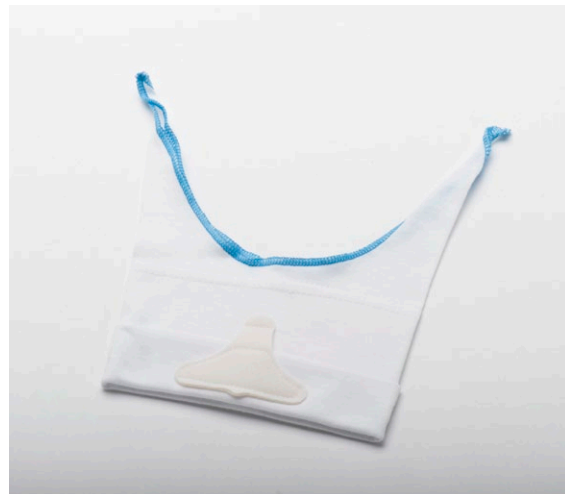
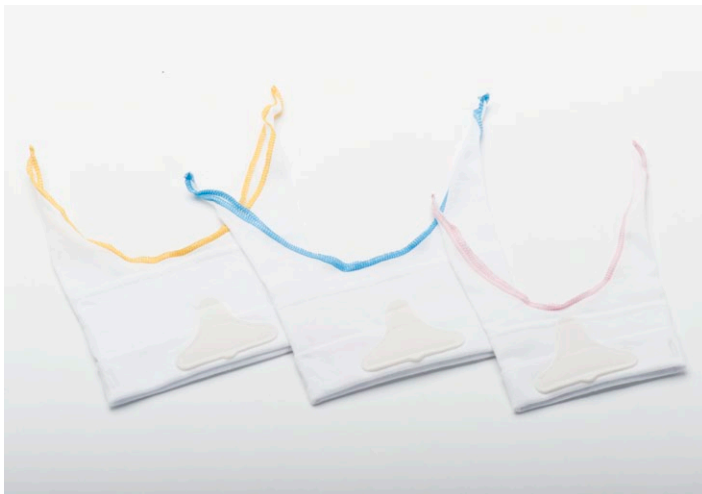
For use with the Infant Flow LP generator assembly  
Single patient use



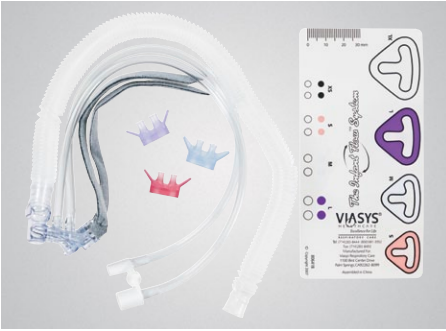
Cat. no.	Size	Measurements	Qty.
<b>777040XS</b>	Extra small	17–21 cm	Box of 10
<b>777040S</b>	Small	21–26 cm	Box of 10
<b>777040SM</b>	Small-medium	24–28 cm	Box of 10
<b>777040M</b>	Medium	26–32 cm	Box of 10
<b>777040L</b>	Large	32–37 cm	Box of 10
<b>777040XL</b>	Extra large	37–42 cm	Box of 10

## Bonnets

Single patient use



Cat. no.	Size	Color	Measurements	Qty.
<b>777010</b>	000	White	18–20 cm	Pack of 10
<b>777012</b>	00	Gray	20–22 cm	Pack of 10
<b>777014</b>	0	Pink	22–24 cm	Pack of 10
<b>777016</b>	1	Lt. brown	24–26 cm	Pack of 10
<b>777018</b>	2	Yellow	26–28 cm	Pack of 10
<b>777020</b>	3	Lt. blue	28–30 cm	Pack of 10
<b>777022</b>	4	Gold	30–32 cm	Pack of 10
<b>777024</b>	5	Green	32–34 cm	Pack of 10
<b>777026</b>	6	Lt. burgundy	34–36 cm	Pack of 10
<b>777028</b>	7	Orange	36–38 cm	Pack of 10



## 777085-102

### Infant Flow generator kit/circuit

Included: Generator, sizing guide and small, medium and large nasal prongs

Single patient use, case of 20

## 12204-102

### Infant Flow generator kit/circuit

Included: Generator, prongs and Fisher & Paykel neonatal, single-limb heated circuit for use with MR730 or MR850 humidifier

Single patient use, case of 20

## 773389-104

### Infant Flow generator kit/circuit

Included: Generator, prongs and neonatal, single-limb heated circuit for use with Hudson RCI humidifiers (21V)

Single patient use, box of 20



## Nasal masks

For use only with the Infant Flow generator assembly

Single patient use

Cat. no.	Size	Qty.
<b>777086-101</b>	Small	Box of 10
<b>777086-102</b>	Medium	Box of 10
<b>777086-103</b>	Large	Box of 10
<b>777086-104</b>	Extra large	Box of 10



## 12204-101

### Infant Flow circuit only

Fisher & Paykel neonatal, single-limb heated circuit for use with MR730 or MR850 humidifier

Single patient use, case of 20

## 773389-105

### Infant Flow circuit only

Neonatal, single-limb heated circuit for use with Hudson RCI humidifiers (21V)

Single patient use, box of 20



## Nasal prongs

For use only with the Infant Flow generator assembly

Single patient use

Cat. no.	Size	Qty.
<b>11513-101</b>	Small	Box of 10
<b>11513-102</b>	Medium	Box of 10
<b>11513-103</b>	Large	Box of 10



## Bonnets

For use only with the Infant Flow generator assembly

Single patient use, pack of 10

Cat. no.	Size	Color	Measurements
<b>777084-101</b>	000	White	18–20 cm
<b>777084-102</b>	00	Gray	20–22 cm
<b>777084-103</b>	0	Pink	22–24 cm
<b>777084-104</b>	1	Lt. brown	24–26 cm
<b>777084-105</b>	2	Yellow	26–28 cm
<b>777084-106</b>	3	Lt. blue	28–30 cm
<b>777084-107</b>	4	Gold	30–32 cm
<b>777084-108</b>	5	Green	32–34 cm
<b>777084-109</b>	6	Lt. burgundy	34–36 cm
<b>777084-110</b>	7	Orange	36–38 cm
<b>777084-111</b>	8	Dk. green	38–40 cm
<b>777084-112</b>	9	Navy	40–42 cm

# Index

0		1		16390-103		5		777000S	
004-12102-001	14	10030A	19	16465	2	50000-09920	5	777000XL	31
004-12103-001	13	10040A	19	16496	8	50000-09960	5	777000XS	31
004-12140-001	14	10041A	19	16546	10	50000-40031	4	777002L	31
004-12695-002	14	10042A	19	16605	6, 10	50000-40034	5	777002M	31
004-13035-001	15	10046A	19	16606	6	50000-40035	2	777002S	31
004-13036-001	15	10047A	19	16607	6, 10	50000-40038	4	777002XL	31
004-13037-001	15	10048A	19	16608	6	51000-02736	2	777002XS	31
004-13038-001	15	10049A	19	16694A	19	51000-40094	4	777010	32
004-13063-001	14	10112	23	16920	10	51000-40098	4	777012	32
004-13886-001	13	10273	23	17509	10	51000-40640	2	777014	32
004-13897-001	15	10384D	8	19270-001	13	51000-40888	3	777016	32
004-13908-001	14	10635	5			51000-40897	3	777018	32
004-13912-001	15	10684	11	2				777020	32
004-13914-001	13	11322	19	20005	8	6		777022	32
004-13955-001	14	11395	4	20225	11	66045	20	777024	32
004-18220-001	16	11437	25	20254	21	677-002	30	777026	32
004-18221-101	16	11438	25	20255	21	68289	3	777028	32
004-18223-101	16	11513-101	33	21380-001	13	69300	2, 9	777040M	32
004-18225-001	17	11513-102	33	21773	9	69300A	2	777040S	32
004-18226-101	17	11513-103	33	21774	9	69754	23, 29	777040SM	32
004-18227-001	16	11518-16VS	26	21775	9	7		777040XL	32
004-18228-101	16	11518-21VL	26	21778	9	7003100	5	777040XS	32
004-18230-101	16	11518-21VS	26	21780	9	7003300	5	777084-101	33
004-18602-001	15	11518-730L	26	21782	9	7003401	5	777084-102	33
004-18862-001	13	11518-730S	26	22095	2	7003402	5	777084-103	33
004-19211-001	17	11518-850L	26	24736-001	13	71670	3	777084-104	33
004-19212-001	17	11518-850S	26	24737-001	13	79018	5	777084-105	33
004-19461-001	15	11536	9	2688-332	20	765742	24	777084-106	33
004-19462-001	15	11539	8	27695-001	6, 10	765759	24	777084-107	33
004-19463-001	15	11540	8	3		766586	24	777084-108	33
004-19464-001	15	11570	11	32042	21	766798	24	777084-109	33
004-19465-001	15	11571	11	33915	3	766895	26	777084-110	33
004-19495-001	14	11732	6	33985	2	766896	25	777084-111	33
004-19574-001	14	11744-730K	27	33987	2	766897	25	777084-112	33
004-19826-001	14	11744-850K	27	34403	2, 9	767138	24	777085-102	33
004-19827-001	15	11744-HRCK	27	4		767163	24	777086-101	33
004-19828-001	15	11790	4	40624	9	768965	23	777086-102	33
004-19833-001	14	11938	3, 9	4124	11	768968	23	777086-103	33
004-19937-001	14	12151	25	45038	9	770134	23, 29	777086-104	33
00423	11	12152	25	462364	24	770135	23, 29	777215	30
01468	21	12194	8	463605	23	770136	23, 29	777237-101	29
03800A	19	12204-101		463606	23	770566	24	777237-102	29
03803T	19	12204-102		465298	24	771374	26	777238	29
03837	21	13912-001		466423	29	771375	26	777243	29
03869H	20	15619		466448	30	771463	26	777248	30
03920A	19	15620		466952	30	771465	26	777040L	32
04322	20	15625		467349	30	771466	26	7772000LP	31
04709	11	15972		467375	30	772211	30	7772010	31
05141	20	16044		467376	30	772754	24	7772011	31
05213	20	16045		467377	23, 29	772793	25	7772020LP	31
07426	20	16131		480029	25	773389-104	33	7772021	31
9220	20, 23	16132		480038	30	773389-105	33		
09413	11	16144		480044	30	773996	26	D	
09437	20	16149				773997	26	D1420/100	30
09440	21	16173				775728	30		
09526	2	16174				777000L	31		
09531	11	16240D				777000M	31		
09532	11	16390-101							
09534	11	16390-102							



CareFusion  
Yorba Linda, CA

[carefusion.com/criticalcare](http://carefusion.com/criticalcare)

