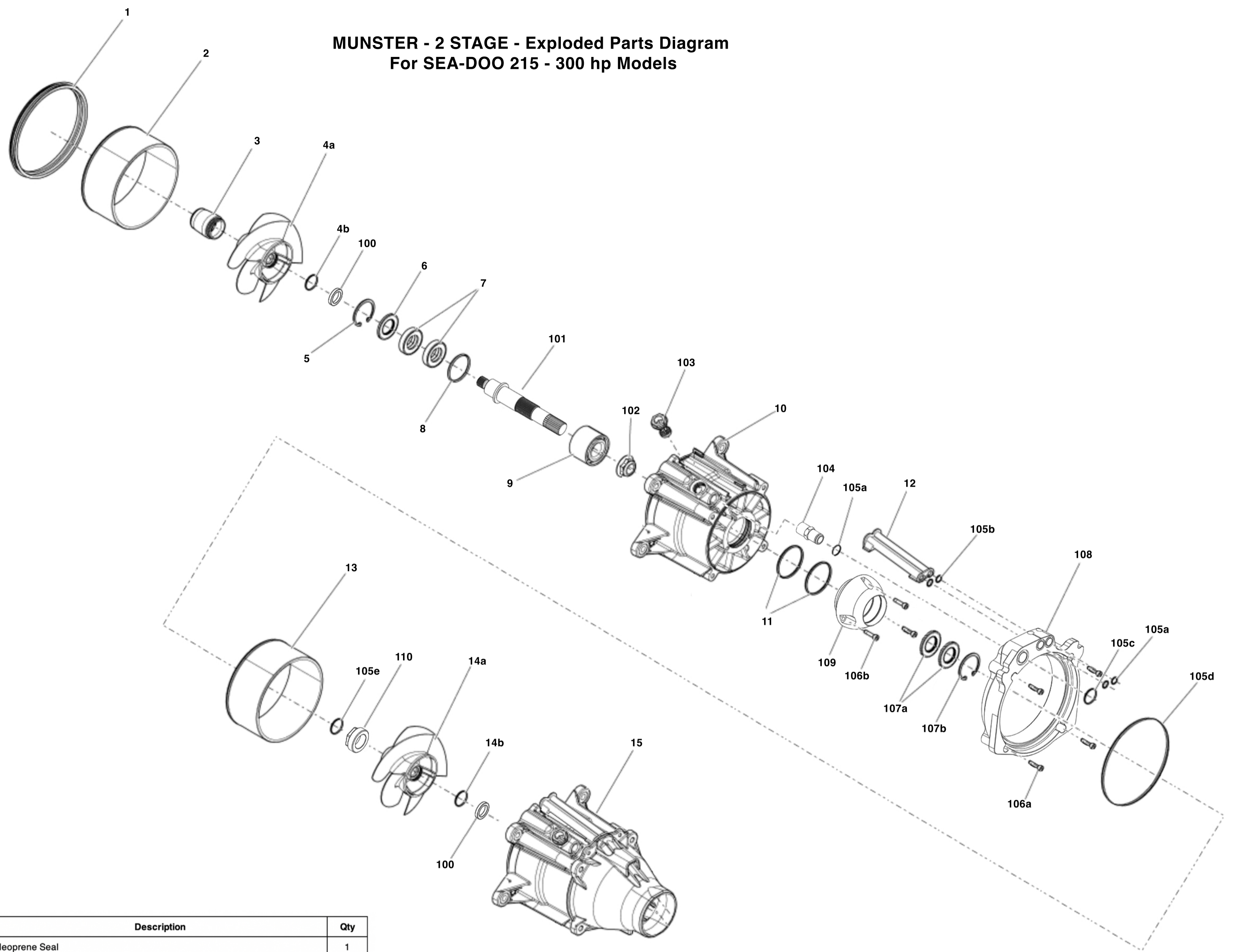


**MUNSTER - 2 STAGE - Exploded Parts Diagram  
For SEA-DOO 215 - 300 hp Models**



#	Supplier	P/N	Description	Qty
1	BRP	293200087	Neoprene Seal	1
2	BRP	267001036	Wear Ring 155mm	1
3	BRP	267000929	Impeller Boot	1
4	BRP	267001033	Impeller Assembly - 13/17 - 155mm (Includes 4a-4b)	1
5	BRP	293370038	C-Clip	1
6	BRP	293200089	Outer Pump Seal	1
7	BRP	271002071	Main Pump Seal	2
8	BRP	293300090	O-ring	1
9	BRP	267000900	Pump Bearing	1
10	BRP	271002018	Aluminum Pump housing	1
11	BRP	293300086	Cone O-ring	2
12	BRP	271000785	Pump Suction Tubes	1
13	BRP	267000897	Wear Ring 150mm (215 - 255 hp models)	1
	BRP	267001036	Wear Ring 155mm (255 - 300 hp models)	1
14	BRP	267001046	Impeller Assembly - 12/14 - 150mm (Includes 14a-14b) (215 - 255 hp models)	1
	BRP	267000940	Impeller Assembly - 12/19 - 155mm (Includes 14a-14b) (255 - 300 hp models)	1
15	BRP	-	Your original pump assembly. (Configuration and part numbers may vary)	1
100	Munster	PAS007	Impeller Spacer Ring	2
101	Munster	PAS002	Splined Pump Shaft	1
102	Munster	PAS101	M27 Shaft Nut	1
103	Munster	PAS004	Cooling Intake Bypass Plug	1
104	Munster	PAS005	Cooling Intake Port	1
105	Munster	PAS102	Oring Kit (Includes 105a-105e)	-
105a	Munster	-	O-ring #113	3
105b	Munster	-	O-ring #013	2
105c	Munster	-	O-ring #211	1
105d	Munster	-	O-ring #259	1
105e	Munster	-	O-ring #213	1
106	Munster	PAS107	Hardware kit (Includes 106a-106b)	-
106a	Munster	-	M8x1.25 x 25 Socket Head Cap Screw	4
106b	Munster	-	M6x1 x 20 Socket Head Cap Screw	3
107	Munster	PAS103	Cone Seal Kit (Includes 107a-107b)	-
107a	Munster	-	Cone Seal	2
107b	Munster	-	47mm Internal C-clip	1
108	Munster	PAS001	Pump Adapter	1
109	Munster	PAS003	Through Hole Cone	1
110	Munster	PAS006	Spline Seal	1