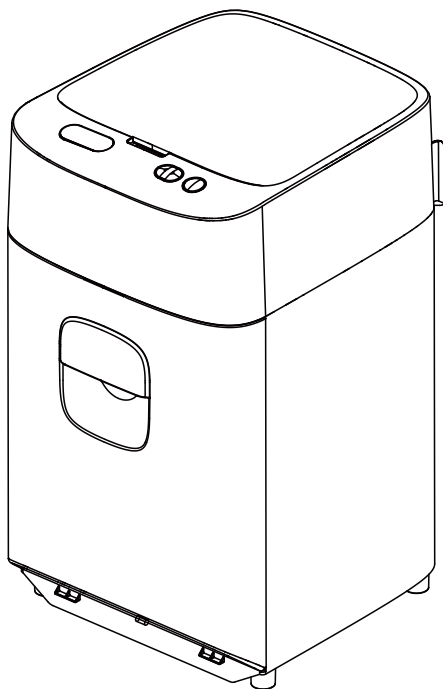


*AromaRoom*

**Instruction Manual**  
**Electric Diaper Machine**

Model No.: DP3201



Read this manual thoroughly before using and save it for future reference.

## SAFETY PRECAUTIONS

Before using this product, please read this manual carefully and keep it for future reference.

To prevent injury to the user or personal and property damage,

When using electrical appliances, the following basic safety matters should be followed:

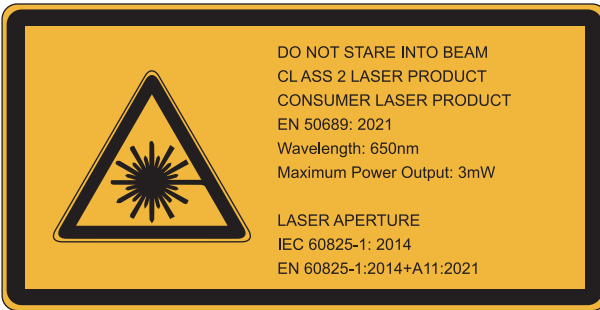
- Read all instructions
- Before use, check the voltage and power corresponding to the voltage and power shown on the appliance nameplate.
- Never use the unauthorized parts to repair the unit, it will void the warranty.
- After removing all the packaging,. The unit and accessories need to be inspected
- Do not operate the appliance after the cord or plug is damaged or the appliance is faulty or damaged in any way
- Children are not allowed to use, but it is foreseeable, but only under supervision
- This appliance is not intended for use by persons (including children) with impaired physical, sensory or mental capabilities or lack of experience and knowledge, unless they are supervised or instructed by a person responsible for their safety
- Children should be supervised to ensure that they do not play with these appliances
- Do not immerse the machine in water or other liquids
- This product has the function of generating laser beam, can be reminded in the machine whether there is a pinch bag situation, do not give this product to children as a toy.

## IMPORTANT SAFEGUARDS

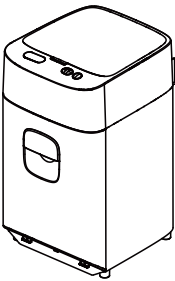
1. Please do not put the product into water or other liquids to avoid damage to human body or the product.
2. Do not use the product around flammable and explosive gases.
3. Do not use the product for other purposes.
4. This product is only suitable for indoor use.
5. If the machine does not work properly, please do not disassemble.
7. Remember to avoid giving children to touch this product.
8. Prohibit intentional dropping this product.
9. If the switch does not work properly, do not try to dismantle the line.
10. Check the household voltage to ensure that it meets the rated specifications of the appliance.

## INTRODUCTION

- Congratulations on your new appliance purchase. You have chosen a quality product.
- The operating instructions are part of this product. They contain important information about safety, use and disposal.
- Before using this product, familiarize yourself with all operating and safety instructions. Use this product only in the designated application area.
- Please also pass these operating instructions on to any future owner.

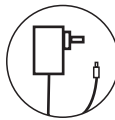


## PACKAGE CONTENTS



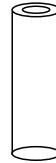
Diaper Machine

(A)



Power adapter

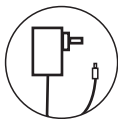
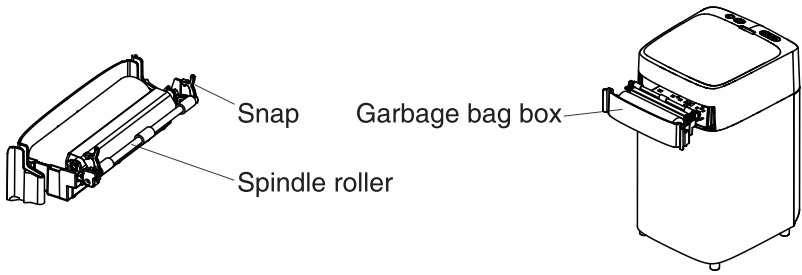
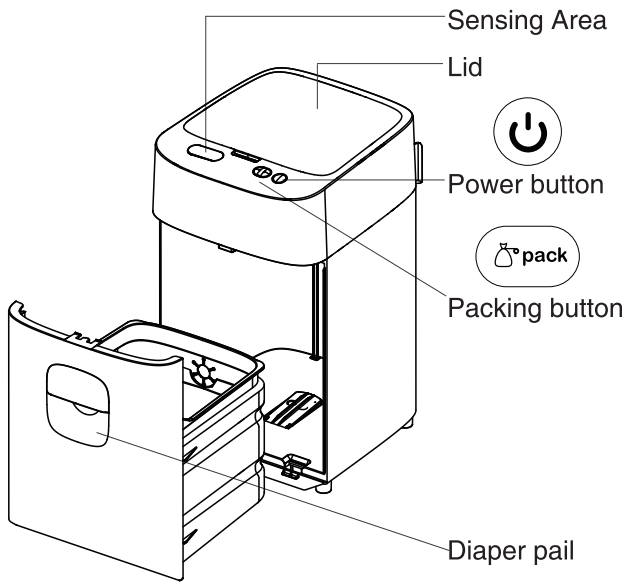
(B)



Large diaper garbage bag  
(1 roll of 36 pcs)

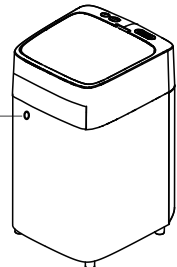
(C)

# INTRODUCTION TO PRODUCT STRUCTURE



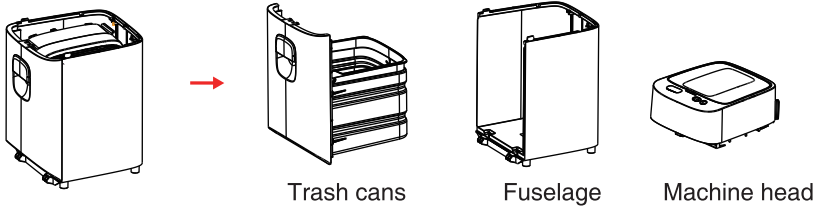
Power adapter

Power adapter  
plug hole

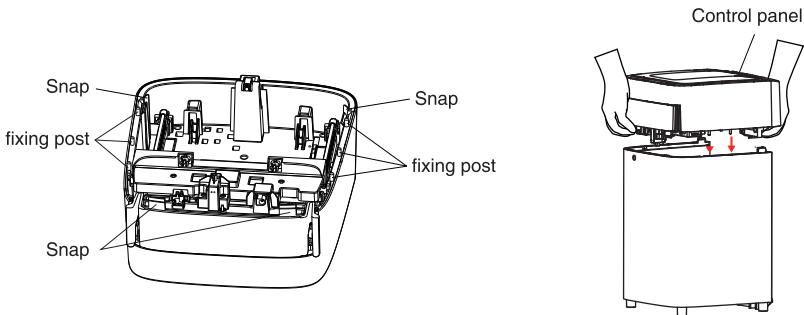


# INSTALLATION INSTRUCTIONS

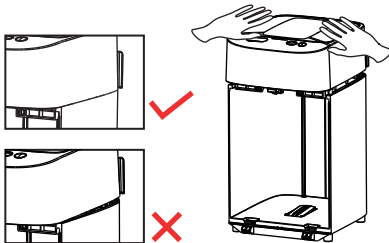
1. Open the carton and remove all parts of the diaper machine and place them on a flat surface.



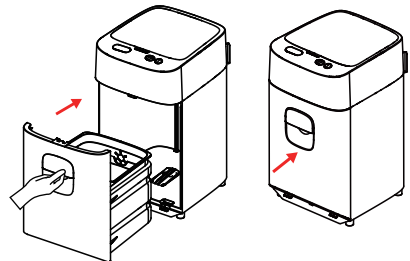
2. Insert the machine head fixing post into the upper part of the fuselage (Control panel edge facing the notched side of the body)



3. Press down the panel with both hands, "click" a sound, check the head and body with the bit (no gap means normal assembly)

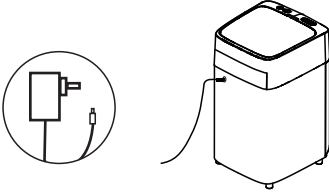


4. Put it in the trash cans

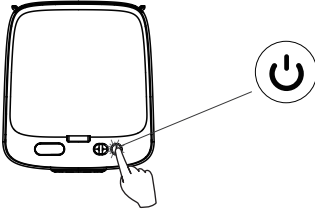


# AUTOMATIC DIAPER BAG PACKING

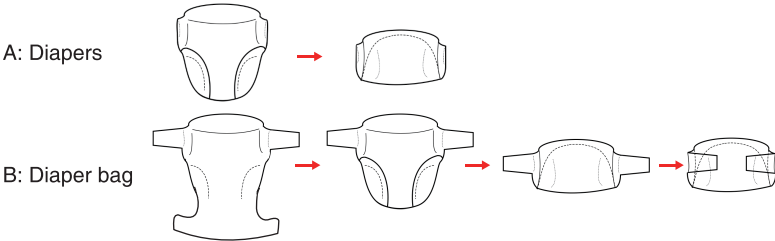
1. Plug in the power supply (display Led light flashes once and then goes out)



2. Press the power button, the machine will run, and the bag will be opened after automatic detection of bag delivery

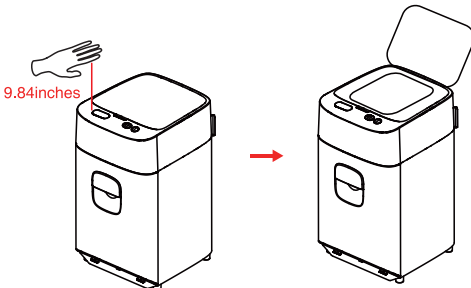


3. The diaper bag shall be folded as follows

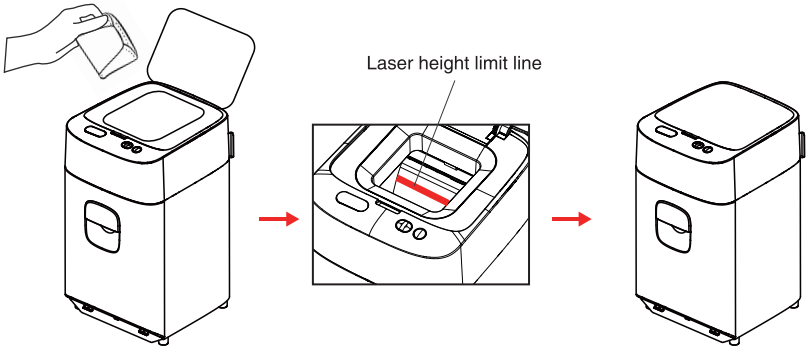


**Note:** -Not folded well, it will lead to poor sealing  
-The larger the size of the diaper model, it needs to be operated according to the requirements, otherwise the seal is not good.

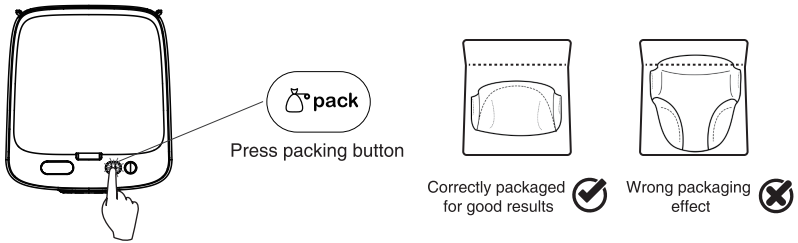
4. Put your hand above the sensing area (hand and display screen shall not exceed 9.84inches), and the diaper machine will automatically open the flip;



5. Put the diaper bag (can not exceed the height of the infrared light indication), and the flip will automatically close after 10s;

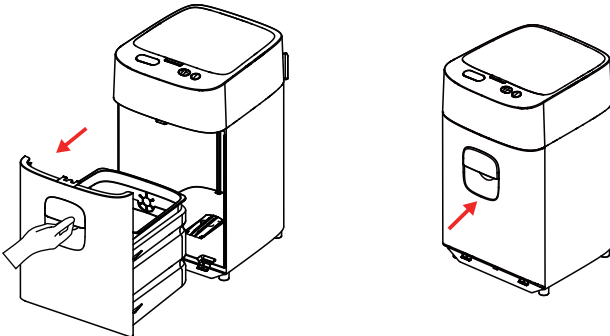


6. Press the Pack button (Power light and Working light are always blue), and the diaper machine performs automatic heat sealing and packing



7. Complete the packing of garbage bags (the machine automatically opens the second bag)

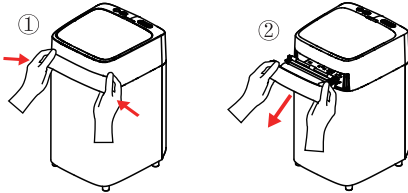
Note: When the diaper bag is overloaded (5 diaper bags are packed continuously), the machine will enter the protection mode (the Power light flashes blue, the Working light is always on, and the Refill bag light is not on). At this point, you need to remove the diaper pail, clean all the used garbage bags from the diaper pail, and wait for the power indicator to stop blinking (about 10 seconds) before you can put the diaper pail back, or it will affect the next work.



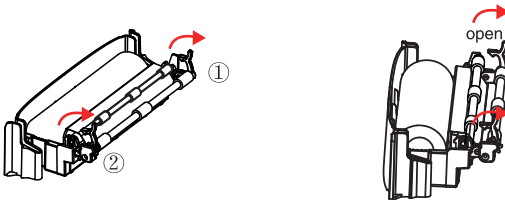
# STEPS FOR CHANGE THE GARBAGE BAG

## Installation of diaper garbage bag

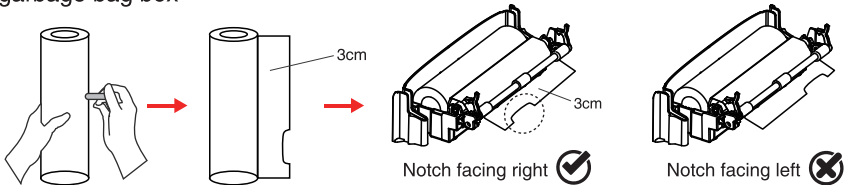
1. Disconnect the power, take out the garbage bag box



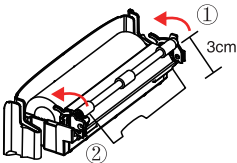
2. Open the snaps at both ends of the roller



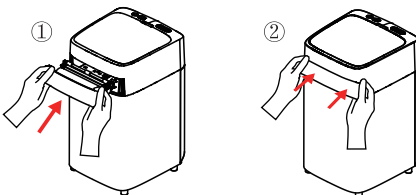
3. Pick up the garbage bag, tear off the seal, pull out 3cm and put it into the garbage bag box



4. Lock the snaps at both ends of the roller (when hearing a "Ka" sound)

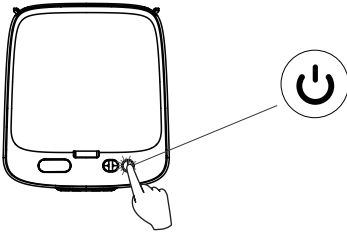


5. Put it into the storage tank of the machine and install it (when hearing a "Ta-da" sound)





6. Press the power button, the machine will run, and the bag will be opened after



## CLEANING AND MAINTENANCE

- The housing should be wiped with a clean, damp cloth.
- Do not immerse the machine in water or other liquids.
- Repairs should be performed by an authorized service representative.

## WARRANTY

The warranty for this device is 12 months from the date of purchase. The warranty only covers material and manufacturing defects, but not transport damage, wear parts or damage to fragile components such as buttons or sealing rings.

The guarantee expires in case of improper handling, use of force and internal manipulations which are not carried out by our authorized service center. Your statutory rights are in no way limited by this warranty. The warranty period is not extended by repairs under the warranty. This also applies to replaced and repaired parts. The device has been manufactured with care and carefully checked before delivery.

Please keep your receipt as proof of purchase.

In case of warranty please contact our customer service:  
**support@aromaroomshop.com**

# TROUBLESHOOTING TABLE

No.	TROUBLE	CAUSES	SHOOTING
1	Indicator light does not light up	The adapter plug is not plugged in	Check if the plug and socket are in good contact
		Power button not turned on	Press the power button
2	No heat	Packing button is not turned on	Press the packing button
		Seal pressure strip off	Use glue to stick back or send after-sales service
3	Poor plugging effect	Diapers above the laser line	The diaper is below the laser line when thrown into the diaper.
		Diaper weight exceeds 300G	Diaper weight does not exceed 300G
4	Lid does not inductively open	Not sensed in the sensing area on the left side of the head	Hand in the induction area on the left side of the head to inductively open the lid
		Sensing height beyond 300mm	Sensing height not more than 300mm
5	Clamp plate stuck/blocked when moving	There are coverings blocking the movement of the clipboard	Removal of coverings
6	Clogged conveying bags	The bag is not centered when it is put into the plastic bag box assembly.	Do not tilt the bag when putting in the plastic bag assembly.
		The last 1 or 2 bags blocked	Remove the plastic bag box and replace the roll bag.
7	The bag came off when the diaper was thrown.	When throwing diapers, the height exceeds 300mm, while the weight exceeds 300G	The height does not exceed 300mm and the weight does not exceed 300G.
8	Can't clip the bag	When conveying bags, the bag tear line is not sticking out of the outside of the rubber roller.	Check that the bag is between the two sticks and that the bag is leaking about 0.78 inches
		Clamp mouth not open	Please double-click the packaging button within 1 second to replace the next trash bag.If not solved, send to after-sales service.
9	Working light flashes on	The machine carries out the switch protection function	Check for foreign body blocking.
10	Refill bag shiny	Garbage bag box in the machine is not installed in place	Check whether the garbage bag box is installed in place

No.	TROUBLE	CAUSES	SHOOTING
11	Refill bag is always on	Run out of bags	Remove the garbage bag box and replace the roll bag.
12	The power light is flashing, the Working light is always on, and the Refill bag light is not on.	The diaper pail did not close in place diaper pail	Check if the diaper pail is closed in place.
		Lid not closed in place	Check that the lid is closed in place.
		The machine carries out full load protection function (5 times of operation)	Clean all the packed diapers and wait for the power light to stop flashing (about 10 seconds) before putting them back into the diaper bucket.
13	Unsuccessful in opening the garbage bag	No clamping of the bag opening	Please double-click the packaging button within 1 second or repack the trash bag.
14	The machine is not in protection mode after cleaning the diaper pail	Take out and put back diaper bag time less than 10 seconds	Remove the diaper pail and wait more than 10 seconds before putting it back in.
15	"Working" and "Refillbag" flash simultaneously or three indicator lights flash simultaneously	Machine needs to be restored to factory settings	1.Unplug the power, then remove the bag box and take out the bag. 2.Put bag box(without the bag)into the machine 3.Press and hold the "Pack" button until the three indicator lights of "sensing area" flash twice before releasing the program. The update is complete. 4.Take out the bag box, put in the bag, and then put it into the machine. After pressing the power button, the machine returns to normal use

## ENVIRONMENT FRIENDLY DISPOSAL

### Disposal:



Guideline 2012/19/EC concerning the handling, collection, recycling and disposal of electrical and electronic equipment and their components ' waste electrical and electronic equipment', known as WEEE"

The crossed symbol on a rubbish container indicates that the machine or device is not allowed to be disposed of, but must be handed over to an appropriately equipped collection point for proper recycling or disposal.

### Directive:



The packaging materials have been selected for their environmental friendliness and ease of disposal and are therefore recyclable. Dispose of packaging materials that are no longer needed in accordance with applicable local regulations.

### Fcc statement

This device complies with part 15 of the Fcc Rules. Operation is subject to the following two conditions:

(1) This device may not cause harmful interference, and (2) this device must accept any interference received, including interference that may cause undesired operation.


*AromaRoom* 

Create a better life

**Manufacture: Bonsen Electronics Limited**

 : No.11-12, Lun Pin Chong Industrial Zone San Tun  
Community, Hou Jie Town 523941 Dongguan City,  
Guangdong PEOPLE'S REPUBLIC OF CHINA

 : [support@aromaroomshop.com](mailto:support@aromaroomshop.com)

 : 1-866-211-9344

**Made in China**