

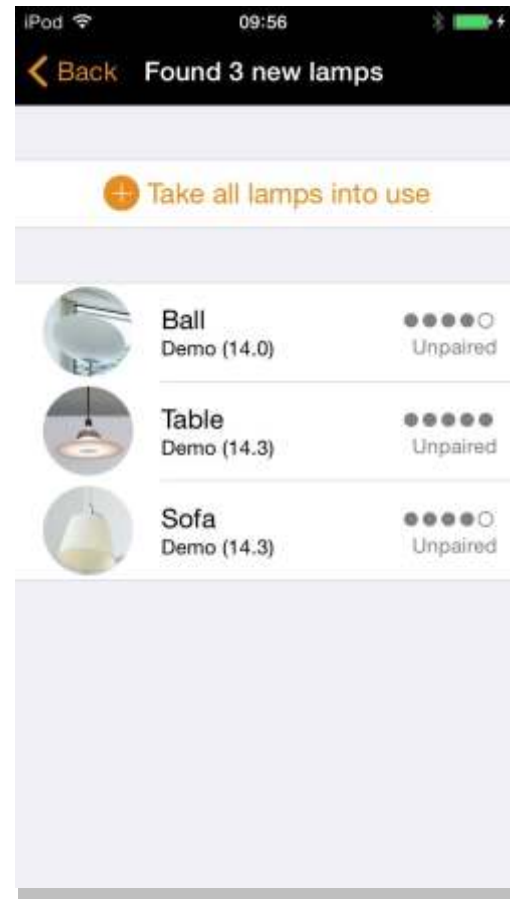
# Casambi App

## Short User Guide

## First Time Use





The Casambi app is easy to use. Follow these simple steps:

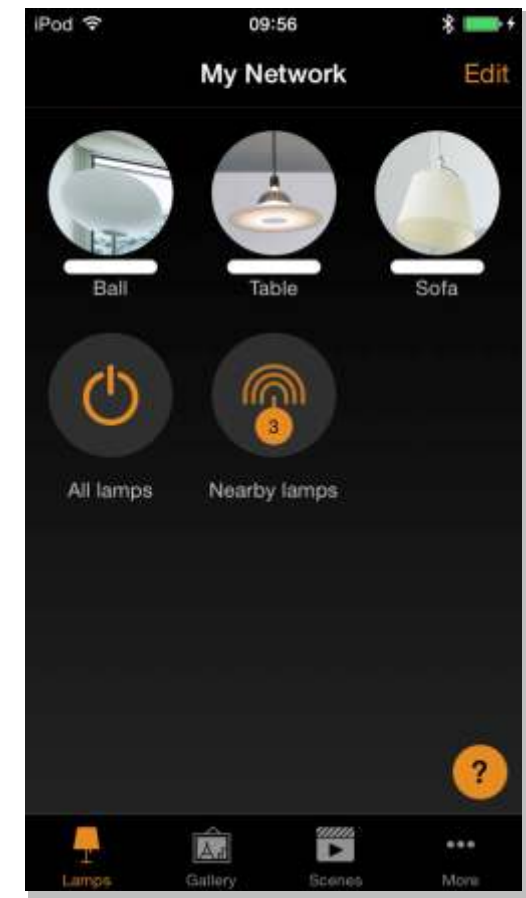
1. Download the app from Apple App Store or Google Play Store.
2. Turn on your Casambi enabled luminaires.
3. Open the app.
4. The Casambi app will automatically find all Casambi enabled luminaires that are switched on.
5. Tap on 'Take all lamps into use' .
6. The Casambi app will automatically add all luminaires to one network and open the 'Lamps' tab.



## Basic Gestures

Here are the basic gestures for controlling your lights:

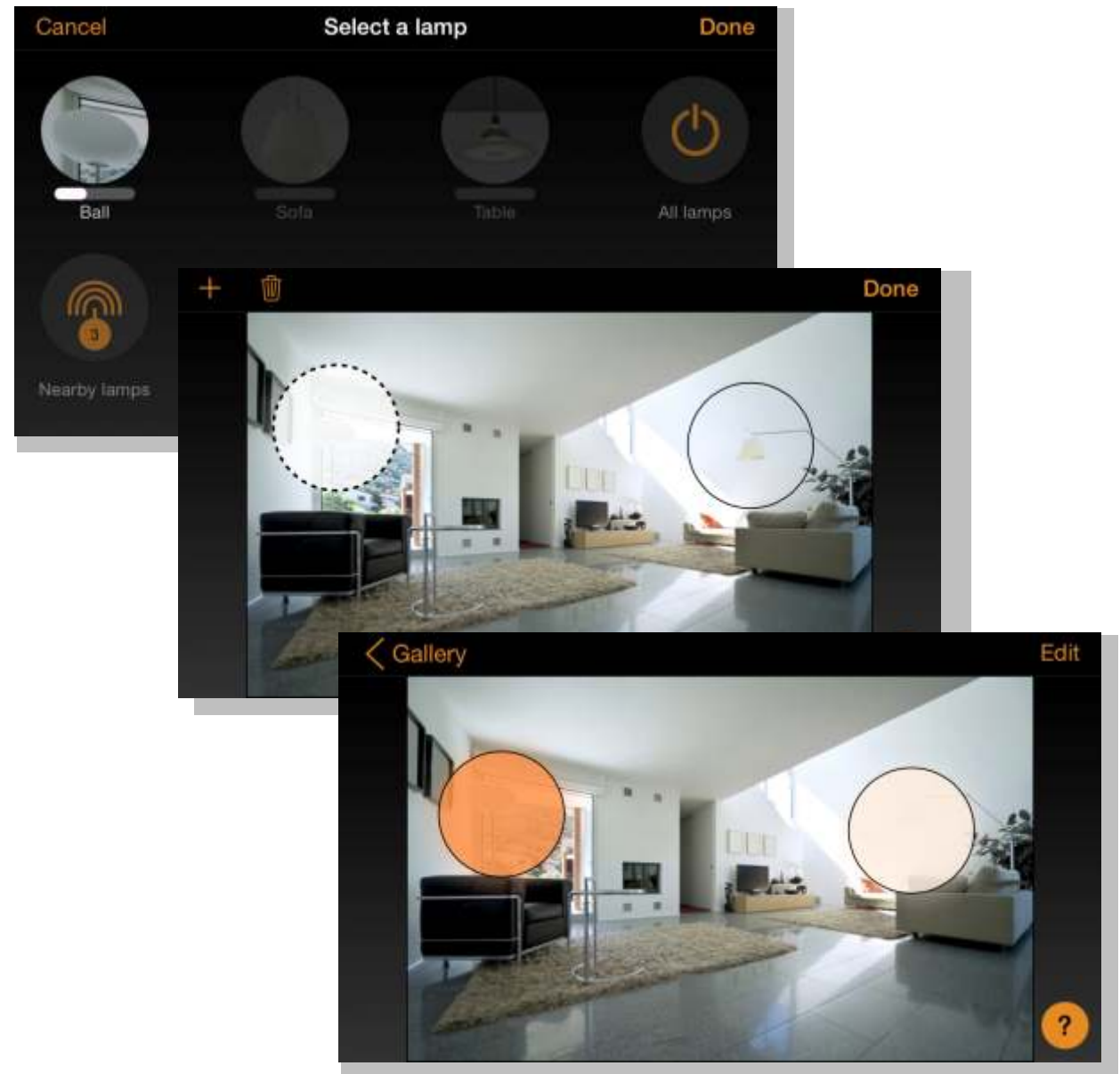
- > To turn your luminaire on or off, just tap on the lamp control. 
- > Pan lamp control left or right to adjust light level of the luminaire. 
- > Pan lamp control up or down to adjust the colour temperature of the luminaire. 
- > Hold on top of the lamp control to change the colour and to save colours to palette. 



## Gallery

The Gallery in the Casambi app is the most natural way to control your luminaires. Take a picture of the room where your luminaires are installed, and place lamp controls over them in the picture. You can also take a panoramic photo to have more luminaires in one photo.

1. Add a photo of your room to the Casambi Gallery by tapping 'Edit' and after that the '+' sign.
2. After you have added a photo you can add lamp controls to the picture. Tap on the '+' sign, select a lamp control that you want to add to the picture, locate it over the controlled luminaire and tap 'Done'.
3. Once you have added controls over the luminaires in the photo, tap 'Done'.
4. Now you can control your luminaires visually from the picture. No need to guess which luminaire is which.



## Scenes and Animations

In the 'Scenes' tab, you can create different lighting scenes for different occasions. It is possible to control multiple luminaires with one tap to create a perfect ambience. One luminaire can be used in several scenes.

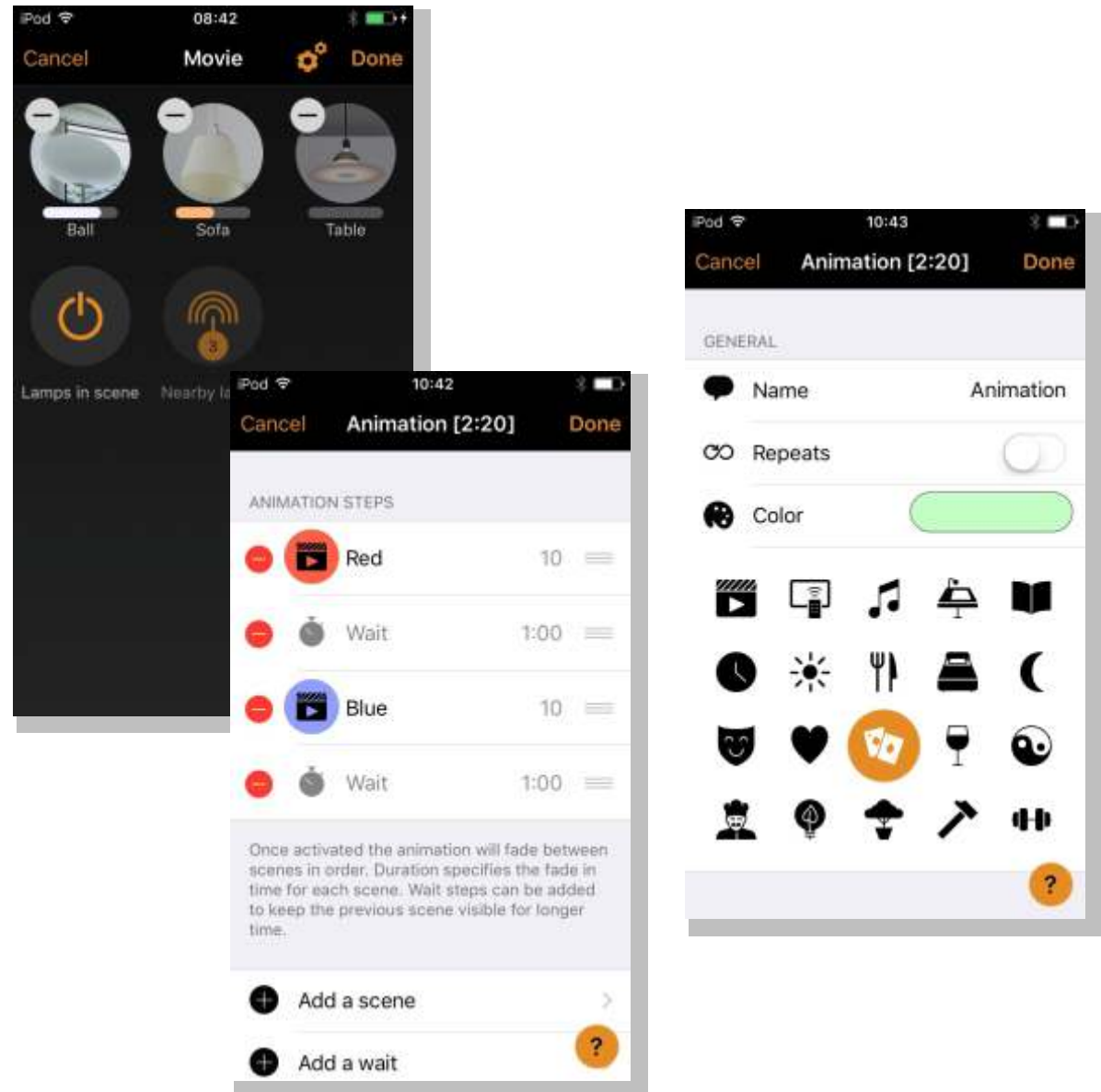
1. Tap on 'Add a scene' and enter a name for the scene. Select the 'Add a scene' option.
2. Select one or multiple lamp controls and adjust the luminaires for the scene. You can adjust the luminaires separately or if you want to have the same dim level or colour for all, you can use the 'Lamps in scene' control to adjust all luminaires in the scene.
3. When you are done editing the scene, tap on 'Done'.
4. If you would like to create more scenes tap on the 'Edit' on the top right corner and then tap on the '+' sign.

In the 'Scenes' tab it is also possible to create animations. Animations or dynamic scenes are special scene types that fade from scene to scene. They can be used like ordinary scenes. Animations can also repeat.

1. Tap on 'Edit' in the top right corner and then tap on the '+' sign.
2. Tap on the 'Add an animation' option.
3. Add animation steps. You can add scenes and wait times to the animation. Example:
  - > Add Scene Red, fade time 10 sec
  - > Add wait 1 min
  - > Add Scene Blue, fade time 10 sec

This animation setting will fade in to scene Red in 10 seconds and Red will be active for 1 minute. Then the scene Red will fade into scene Blue in 10 seconds.

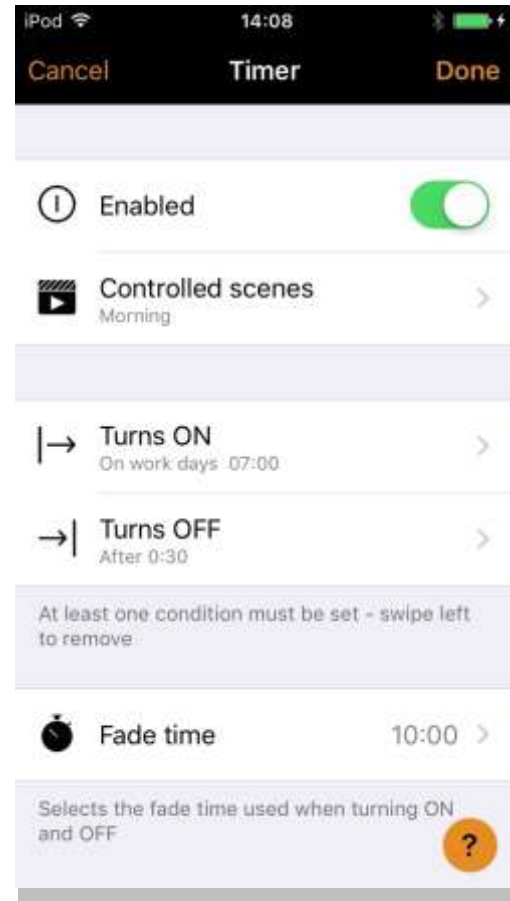
4. In Animation behavior settings you can set the animation to repeat.
5. When you are done editing the animation tap on 'Done'.



## Timer

With the schedule/timer function you can create a list of timers that will turn scenes or animations on and off based on time.

1. Go to the More tab and select Timer. Create a new timer by tapping 'Add a timer' .
2. Tap on 'Add a scene' and select a scene or animation that this timer will control.
3. Tap on the 'Switches ON' button to set the time when the scene should turn on and tap on the 'Switches OFF' button to set the time when the scene should turn off.
4. It is also possible to set a fade time for the timer so that the scene will come on smoothly.
5. When you are done editing the timer tap on 'Done'.



## Networks and Sharing

If you want to control your luminaires from more than one mobile device, you need to change the network sharing settings. As a default, the created network is not shared and only stored in the device that created it.

1. Go to 'More' tab and select 'Network setup' and 'Sharing settings' .
2. Tap on 'Sharing' and the 'Sharing mode' screen will open.
3. There are four different sharing modes: Not Shared, Administrator only, Password protected and Open. When you select Administrator only, Password protected or Open mode, the network will be uploaded to cloud server and then it can be also accessed from other mobile devices.
4. Add an email address and password for the network.
5. Confirm your settings with 'Save'.



CASAMBI

All Aicci lights and luminous tables are available with smart Casambi lighting control offering an advanced, fully-featured controlled light. Explore our product range at [www.aicci.fi](http://www.aicci.fi).

**AICCI**