



# **WHOA!!! CAUTION NOT SO FAST**

This product is made out of MDF / Supawood and is fragile of nature.

We recommend all pieces to be test fitted and if required contact pieces to be filled / sanded down for a better fit.

**PLEASE DO NOT FORCE FIT ANY PIECES AS IT  
WILL BREAK!**

ENJOY BUILDING YOUR NEW MODEL.

**IT IS RECOMMENDED TO GO THROUGH ALL THE PAGES AND SEE / UNDERSTAND EACH STEP BEFORE  
STARTING THE ASSEMBLY.**

**FULL QUALITY IMAGES AVAILBLE AT [WWW.WOWWE.CO.ZA](http://WWW.WOWWE.CO.ZA), IT WILL ASSIST WITH THE ASSEMBLY,  
THERE IS A DOWNLOADABLE LINK AS WELL OF THIS ASSEMBLY GUIDE.**

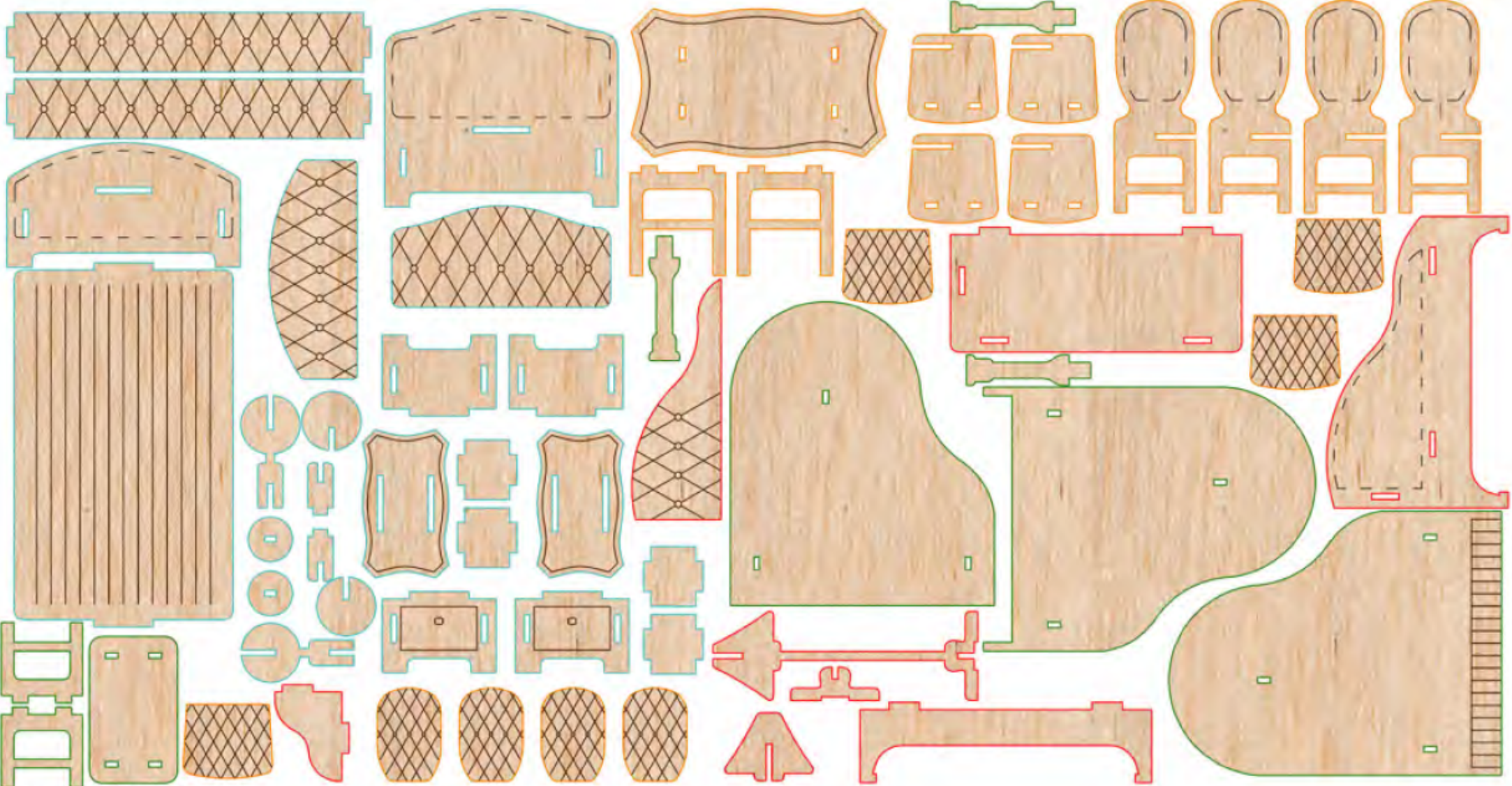


**Dream Barbie House Furniture**

[WWW.WOWWE.CO.ZA](http://WWW.WOWWE.CO.ZA)



# PARTS LIST



## Assembly steps:

- Table/Chairs 
- Livingroom set 
- Piano 
- Bedroom set 

ENGRAVING PATHS —

# ASS EMBLY STEPS



## Table/Chairs

Note: Use glue for better stability of the 3d model.

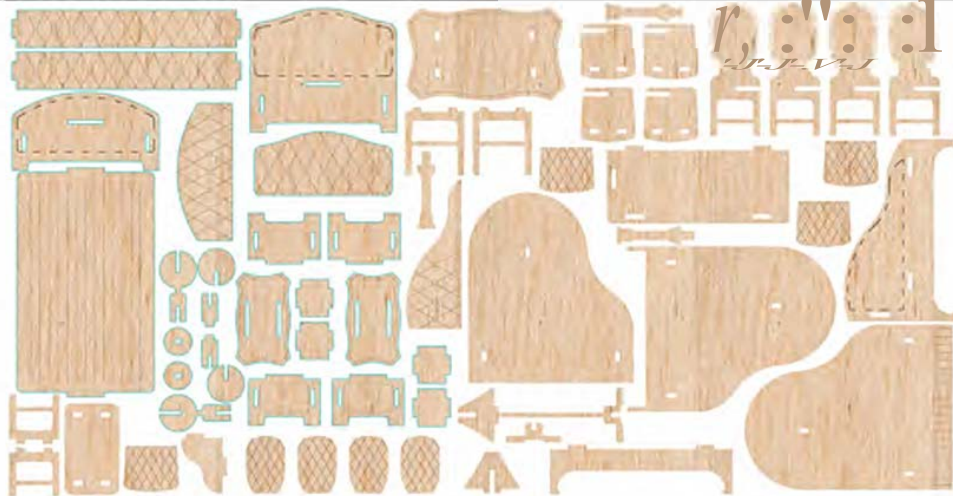


# ASSEMBLY STEPS



## Bedroom set

Note: Use glue for better stability of the 3d model.

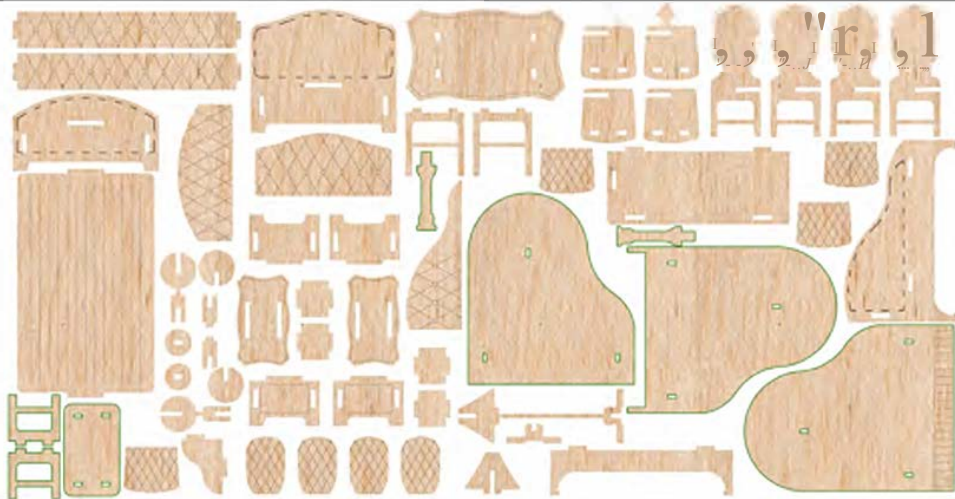


# ASS EMBLY STEPS



## Piano

Note: Use glue for better stability of the 3d model.



# ASSEMBLY STEPS



## Livingroom set

Note: Use glue for better stability of the 3d model.

