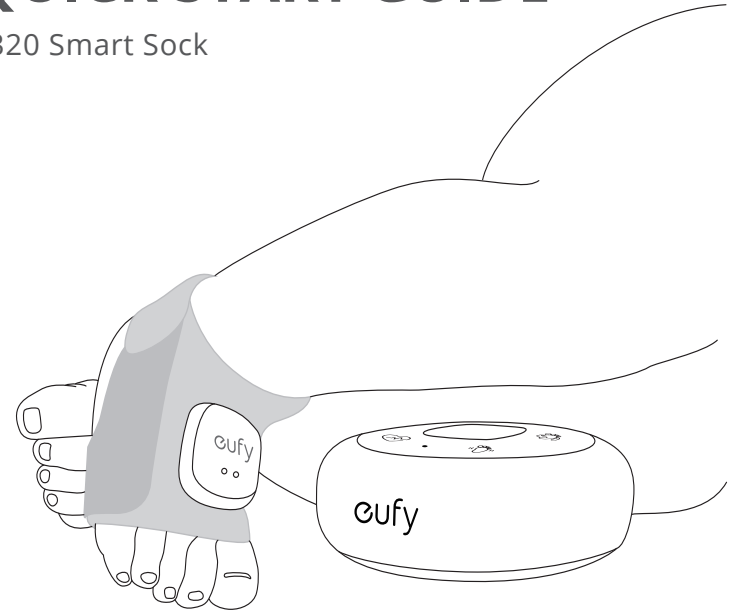




# QUICK START GUIDE

S320 Smart Sock



Anker Innovations Limited. All rights reserved. eufy CARE and the eufy CARE Logo are trademarks of Anker Innovations Limited, registered in the United States and other countries. All other trademarks are the property of their respective owners.

51005002874 V04

## WARNINGS / IMPORTANT SAFETY INSTRUCTIONS



### WARNING

This product is not a medical device. It is not intended for use as a medical device or to replace a medical device. It is not intended to and can not be used to diagnose, treat, cure, or prevent any disease or other condition, including but not limited to, Sudden Infant Death Syndrome(SIDS).

### Remember:

- This product is meant for use with healthy children up to 18 months of age. If your children has a pre-existing medical condition, consult your doctor before use.
- This product is an aid, it is not a substitute or should not be substituted for the care and oversight of an adult or consultation with medical professionals.
- This product is designed and intended for tracking a baby's sleep patterns, sleep training, and general wellness purposes. False positive or false negative readings about your baby's heart rate are a potential risk of this product.
- Do not use this product as a diagnostic tool.
- Do not use this product as an excuse for unsafe sleep habits.

### SAFETY INSTRUCTIONS



FOR YOUR SAFETY AND THE SAFETY OF THE BABY.

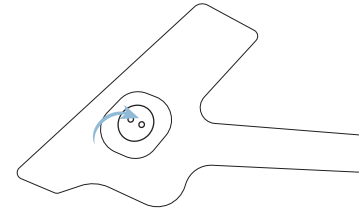
RESPOND IMMEDIATELY WHENEVER A NOTIFICATION SOUNDS.

Always read and obey all important safety messages or instructions mentioned in this manual and the eufy Baby App.

**STRANGULATION HAZARD:** Children get STRANGLED in cords. Keep cords out of the reach of children (more than 1m / 3ft away). Never use extension cords with AC adapters. Only use the AC adapters provided.

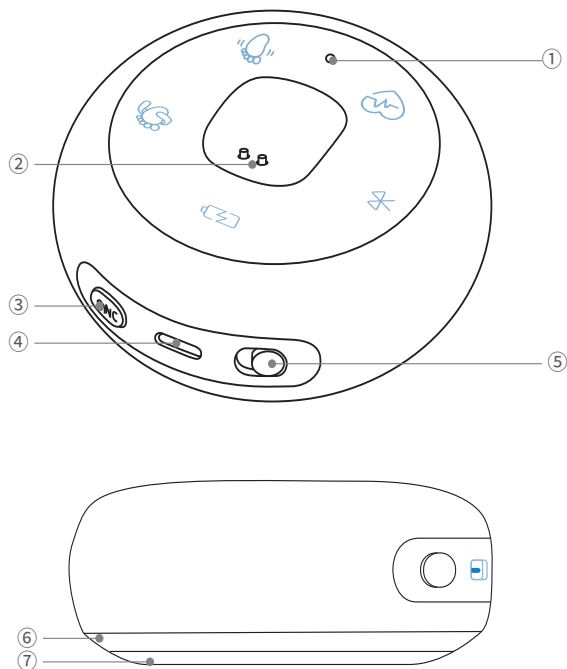
**CHOKING HAZARD:** Keep sock sensor out of children's mouths.

- For babies with sensitive skin, frequently switch between feet. Take off the sock immediately in case of redness, swelling, or skin irritation.
- Tear off the protective film on the sock sensor before use.



## AT A GLANCE

### Sock Base

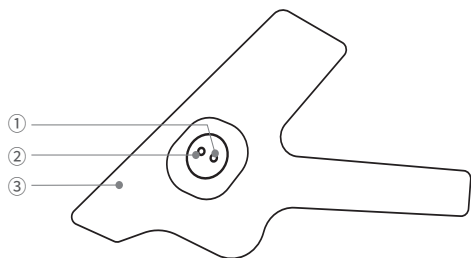


- ① System Indicator
- ② Magnetic Charging Pin
- ③ SYNC Button
- ④ Power Port
- ⑤ Alarm ON/OFF

Icon	Indicator	Description
	Sock Battery	Flashing: Low Battery ON: Charging
	Bluetooth	Flashing: Disconnected
	Baby Uncomfortable	Flashing: Check on Your Baby
	Sock Misaligned	Flashing: Sock Has Fallen Off
	Baby Movement	Flashing: Baby is Moving

- ⑥ Ring Light
  - Working Properly
  - Low Battery, Disconnected Bluetooth, Sock Has Fallen Off
  - Check on Your Baby
- ⑦ Snooze Button

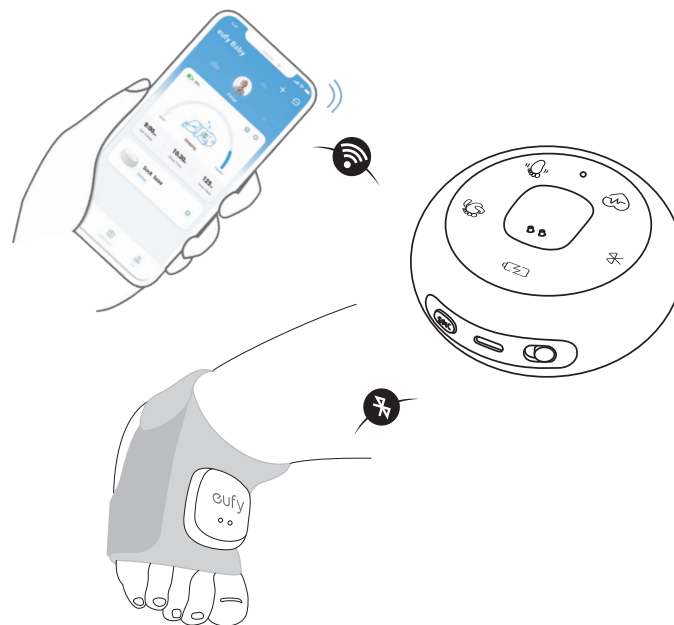
## Smart Sock



- ① Sensor Status Indicator
  - 🔴 Waiting to Connect
  - Charging and Connected
  - Fully Charged and Connected
- ② Sock Sensor
- ③ Sock Wrap

## HOW THE PRODUCT WORKS

The Smart Sock wraps comfortably on the baby's foot to monitor your baby's sleep, including real-time sleep status, sleep time, movements and heart rate, then gives you comprehensive insights of each sleep session.

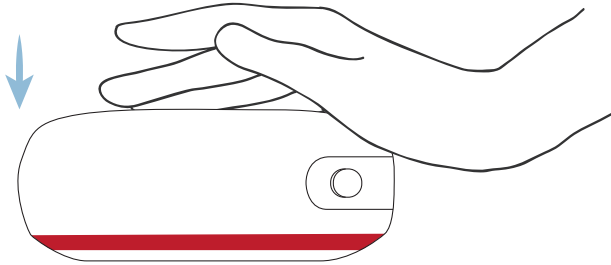


## SOCK BASE ALARMS

The Sock Base sends you prompts with sound and light to keep you aware of your baby's sleep status and when they might be uncomfortable and require your assistance. You will also get notifications on your phone via the eufy Baby app.

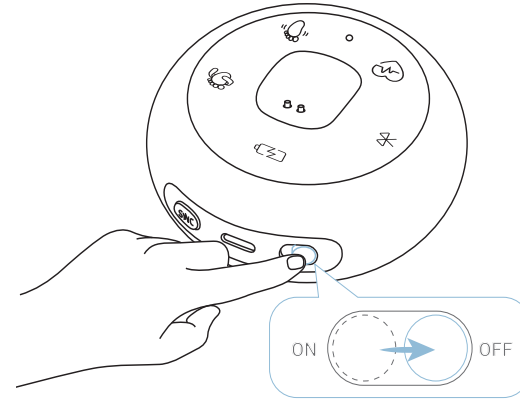
### Snooze the Alarms

To snooze the alarms, pat the Sock Base when the alarm goes off. You will not receive any alerts or phone notifications for 10 minutes while Sock Base is snoozed. If there is still an abnormal reading after 10 minutes, you will receive alerts and phone notifications again.



### Turn Off the Alarms

To turn off the alarms, slide the switch to OFF. Slide the switch back to ON if you want to receive alerts from Sock Base again.

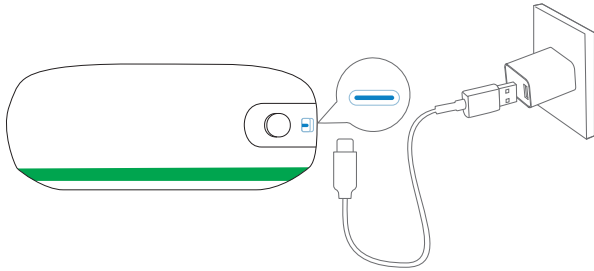


💡 To turn the phone notifications on or off, go to My Device > Smart Sock > Notification setting in the eufy Baby app.

## STEP 1. POWER ON SOCK BASE

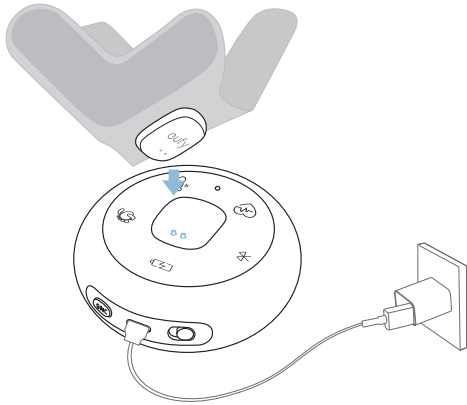
1. Power on the Sock Base.

Connect the Sock Base to a power outlet, then wait for a few seconds until the bottom ring light turns green.



2. Charge the Smart Sock.

Place the Smart Sock on the Sock Base. The sensor status indicator will flash red.



## STEP 2. LINK SOCK BASE TO THE EUFY BABY APP

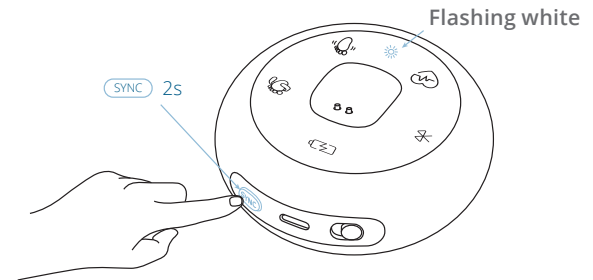
1. Download the eufy Baby app from App Store or Google Play.



2. Scan the QR code on the bottom of Sock Base.

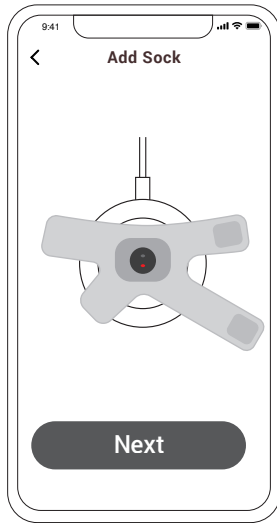


3. Press and hold the SYNC button for 2 seconds, then follow the in-app instructions to add the Sock Base.



### STEP 3. LINK SMART SOCK TO THE EUFY BABY APP

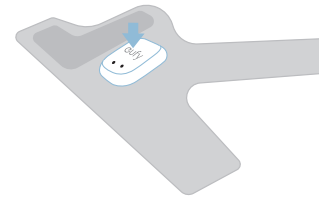
1. Place the Smart Sock on the Sock Base.
2. Follow the in-app instructions to add the Smart Sock:



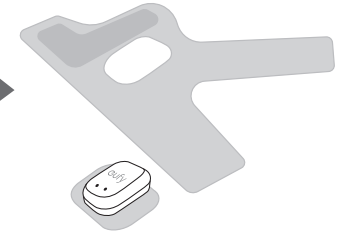
### STEP 4. CHOOSE A SOCK WRAP

Choose the size that provides the right fit — not too tight, not too loose, and with room for your baby's skin to breathe. This keeps your baby comfortable and makes the sensors more accurate.

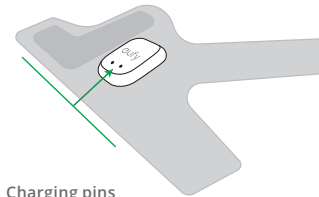
1. Push the sensor down.




2. Take out the sensor.

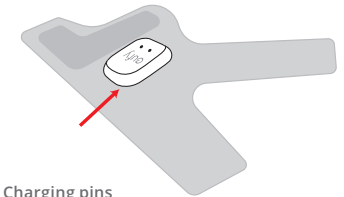


3. Install the sensor on the chosen wrap.



Charging pins facing the straight edge. 

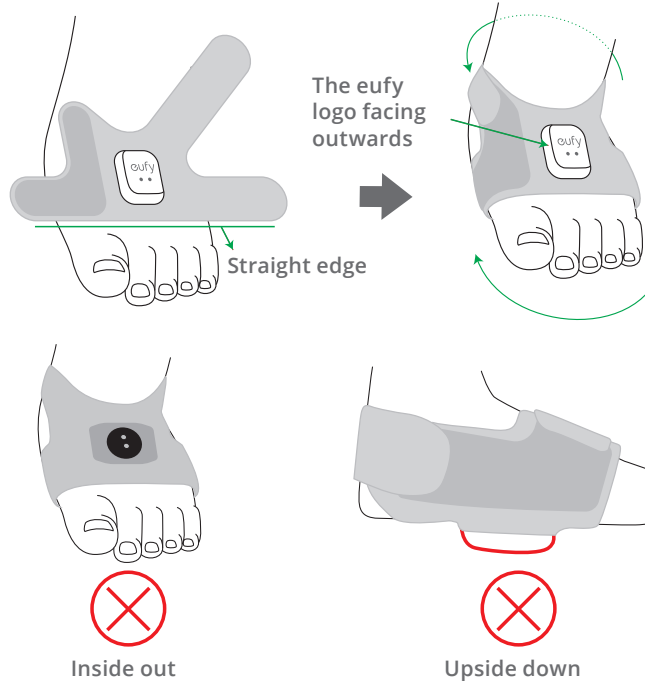
4. Make sure the charging pins are facing the correct side.



Charging pins facing the wrong side. 

## STEP 5. WEAR SOCK FOR BABY

Wear the sock on either foot of the baby.



- Do not wear the sock too tightly or loosely. Take off the sock immediately in case of redness, swelling, or skin irritation.
- For babies with sensitive skin, frequently switch between feet.
- To charge the sock, place it on the Sock Base, and make sure the sock battery indicator on the Sock Base turns red.

## NOTICE

### FCC Statement

This device complies with Part 15 of the FCC Rules. Operation is subject to the following two conditions: (1) this device may not cause harmful interference, and (2) this device must accept any interference received, including interference that may cause undesired operation.

Warning: Changes or modifications not expressly approved by the party responsible for compliance could void the user's authority to operate the equipment.

Note: This equipment has been tested and found to comply with the limits for a Class B digital device, pursuant to Part 15 of the FCC Rules. These limits are designed to provide reasonable protection against harmful interference in a residential installation.

This equipment generates uses and can radiate radio frequency energy and, if not installed and used in accordance with the instructions, may cause harmful interference to radio communications. However, there is no guarantee that interference will not occur in a particular installation. If this equipment does cause harmful interference to radio or television reception, which can be determined by turning the equipment off and on, the user is encouraged to try to correct the interference by one or more of the following measures: (1) Reorient or relocate the receiving antenna. (2) Increase the separation between the equipment and receiver. (3) Connect the equipment into an outlet on a circuit different from that to which the receiver is connected. (4) Consult the dealer or an experienced radio/ TV technician for help.

### FCC Radio Frequency Exposure Statement

T8340 has been evaluated and following general RF exposure requirement. The device can be used in portable exposure condition without restriction. The min separation distance is 0cm.

T8351 has been evaluated to meet general RF exposure requirements. The device can be used in fixed/mobile exposure condition. The min separation distance is 20 cm.

Notice: Shielded cables

All connections to other computing devices must be made using shielded cables to maintain compliance with FCC regulations.

The following importer is the responsible party

Company Name: POWER MOBILE LIFE, LLC

Address: 10900 NE 8TH ST, STE 501, BELLEVUE, WA 98004

Telephone: 1-800-988-7973



### IC Statement

This device complies with Industry Canada licence-exempt RSS standard(s). Operation is subject to the following two conditions:

- (1) this device may not cause interference, and
- (2) this device must accept any interference, including interference that may cause undesired operation of the device."

Le présent appareil est conforme aux CNR d'Industrie Canada applicables aux appareils radio exempts de licence. L'exploitation est autorisée aux deux conditions suivantes:

- (1) l'appareil n' doit pas produire de brouillage, et
- (2) l'utilisateur de l'appareil doit accepter tout brouillage radioélectrique subi, même si le brouillage est susceptible d'en compromettre le fonctionnement."

This Class B digital apparatus complies with Canadian ICES-003.

Cet appareil numérique de la classe B est conforme à la norme NMB-003 du Canada.

### IC RF Statement:

T8340 has been evaluated and following general RF exposure requirement. The device can be used in portable exposure condition without restriction. The min separation distance is 0cm.

Le T8340 a été évalué et conforme aux exigences générales d'exposition aux RF.

L'appareil peut être utilisé dans des conditions d'exposition portable sans restriction. La distance de séparation minimale est de 0 cm.

When using T8351, maintain a distance of 20cm from the body to ensure compliance with RF exposure requirements.

Lors de l'utilisation du T8351, maintenez une distance de 20 cm du corps afin de vous conformer aux exigences en matière d'exposition RF.

## CUSTOMER SERVICE

### • Warranty

---

12-month limited warranty

### • Call Us

---

United States +1 (800) 988 7973

United Kingdom +44 (0) 1604 936 200

Germany +49 (0) 69 9579 7960

### • Email Us

---

Customer Support: [support@eufylife.com](mailto:support@eufylife.com)

 @EufyOfficial

 @EufyOfficial

 @EufyOfficial