



# PLANO™

## LED Disk Light



Beyond LED PLANO disk downlights can be direct wired to a 5" or 6" junction box which means they do not need a can and it also comes with retrofit kit for easy and fast installation. PLANO surface mounts directly to the ceiling for instant bright light. Perfect for residential or commercial applications with exceptional color rendering of 90 CRI, and available in 5000K color temperatures. With a life rating of at least 50,000 hours, they greatly minimize the cost of ownership through reduced maintenance and lower utility costs. Fixtures are ENERGY STAR certified, rated for wet location and support California Title 24 compliance.

### Product Features

- Up to 100 Lumens per watt
- Available in 6" and 8"
- Driver-on-board technology eliminates an external power supply Advanced optics & thermal construction
- Dimmable down to 5% of total light output
- Suitable for Damp Locations RoHS compliant and mercury free APPLICATIONS
- Easy Surface Mount or Retrofit installation
- UL & Energy Star listed
- 5 Year warranty

# PLANO™

## LED Disk Light



SKU #	Model #	Watt	Lumens	CCT	Size	Housing	Input Voltage	Dimming	Certifications
155458	D236-90-5000-WH	15W	1300Lm	5000K	6 Inch	White	120V	TRIAC	UL & ES
155459	D228-20W-90-5000-WH	20W	1600Lm	5000K	8 Inch	White	120V	TRIAC	UL & ES

### SKU Number 155458 Specifications

Parameter	Description	Value
General Performance	Model #	D236-90-5000-WH
	Wattage	15W
	Lumen	1300LM
	Lumen Efficacy	Up to 100LM/W
	Color Temperature	5000K
	CRI (Ra)	>90
	Beam Angle	120 Degree
	Diffuser Type	PC
Electrical	Input Voltage	120Vac
	Frequency	50/60Hz
	Dimming	TRIAC
	Power Factor	≥0.9
	Driver Surge Protection	2.5KV
	Operating Temperature	-20 ± 40
Physical	Operating Humidity	20% - 90%
	Storage Temperature	-30°C - 80°C
	Storage Humidity	10% - 95%
	LED Brand	HONGLI
	LED Type	SMD2835
	LED QTY	33PCS
	Housing	Metal
Housing Color	White	
Qualification	IP Rating	IP43
	Warranty	5 Year Warranty



# PLANO™

## LED Disk Light

SKU Number 155459

### Specifications

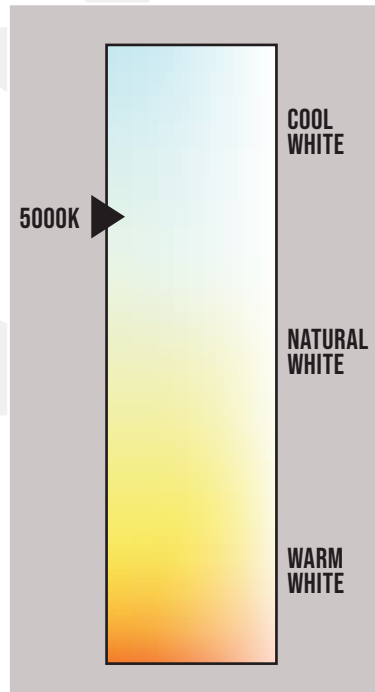
Parameter	Description	Value
General Performance	Model #	D228-20W-90-5000-WH
	Wattage	20W
	Lumen	1600LM
	Lumen Efficacy	Up to 100LM/W
	Color Temperature	5000K
	CRI (Ra)	>90
	Beam Angle	120 Degree
	Diffuser Type	PC
Electrical	Input Voltage	120Vac
	Frequency	50/60Hz
	Dimming	TRIAC
	Power Factor	≥0.9
	Driver Surge Protection	2.5KV
	Operating Temperature	-20 ± 40
Physical	Operating Humidity	20% - 90%
	Storage Temperature	-30°C - 80°C
	Storage Humidity	10% - 95%
	LED Brand	HONGLI
	LED Type	SMD2835
	LED QTY	66PCS
	Housing	Metal
	Housing Color	White
Qualification	IP Rating	IP43
	Warranty	5 Year Warranty

# PLANO™

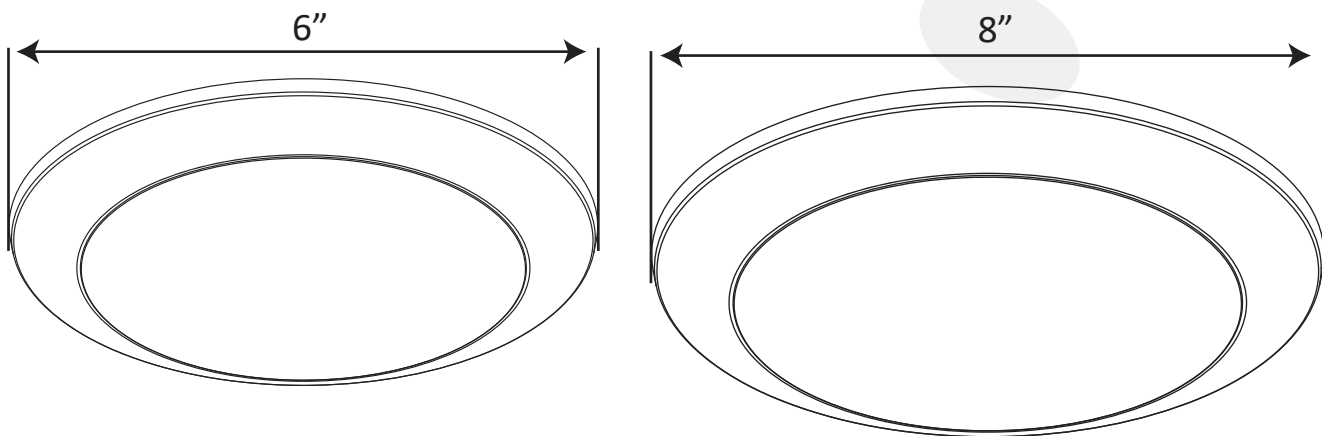
## LED Disk Light



### Correlated Color Temperature (CCT)



### Dimensions





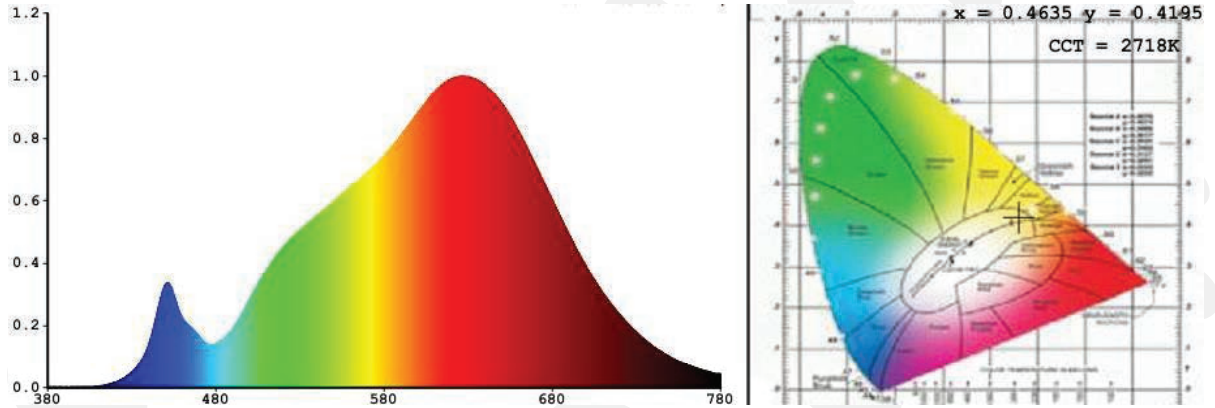


# PLANO™

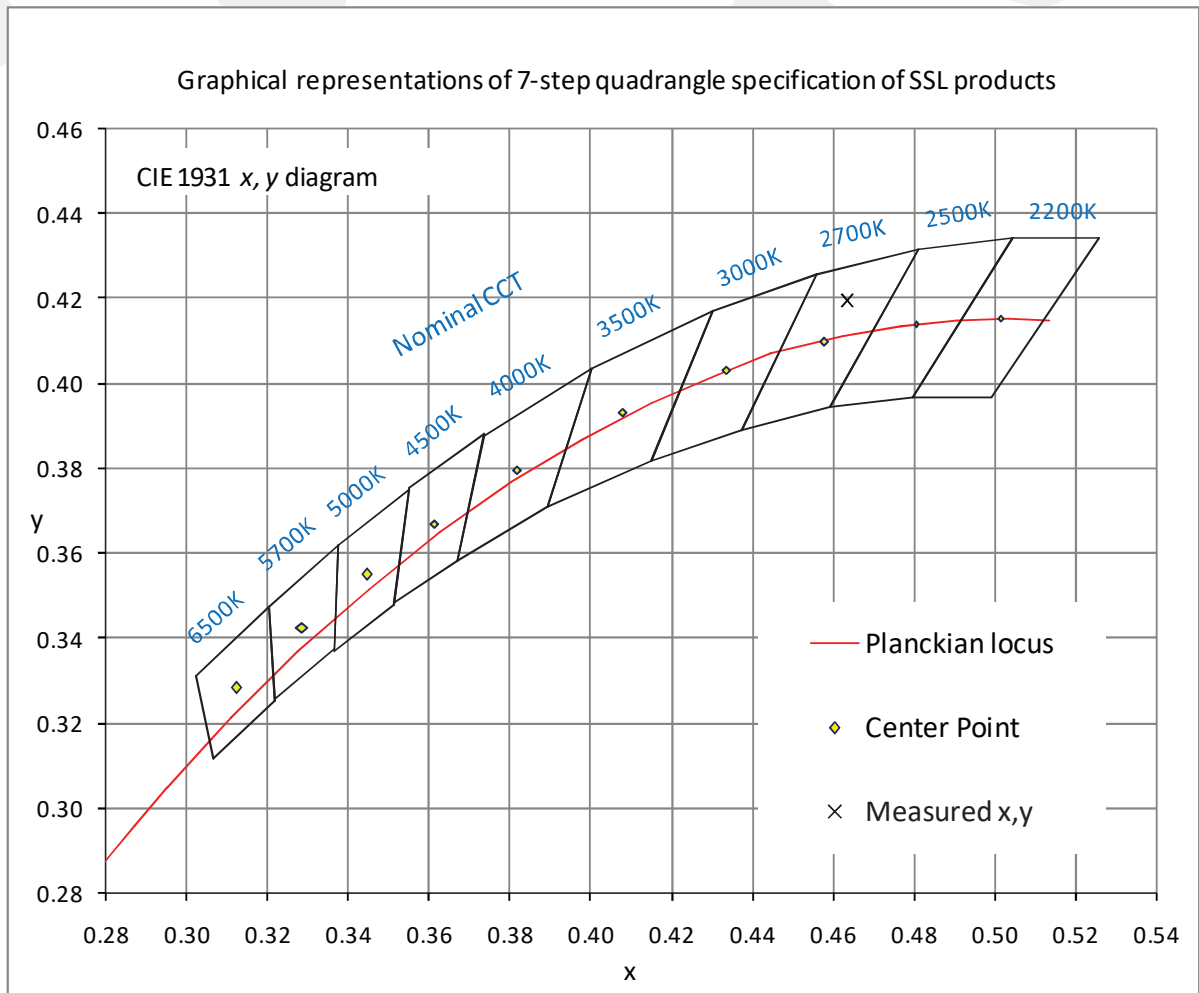
## LED Disk Light

### Photometric Data (SKU #: 155458)

#### 4.1 Spectral Distribution



#### 4.2 ANSI Chromaticity Quadrangles Diagram



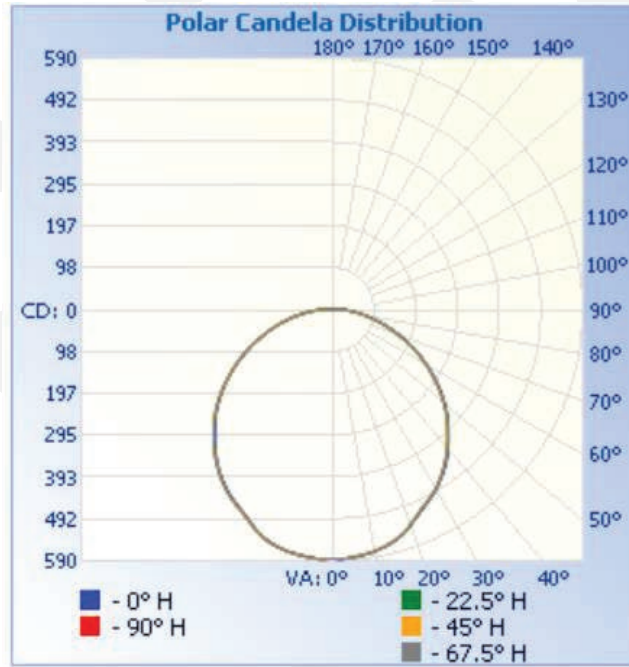
# PLANO™

## LED Disk Light

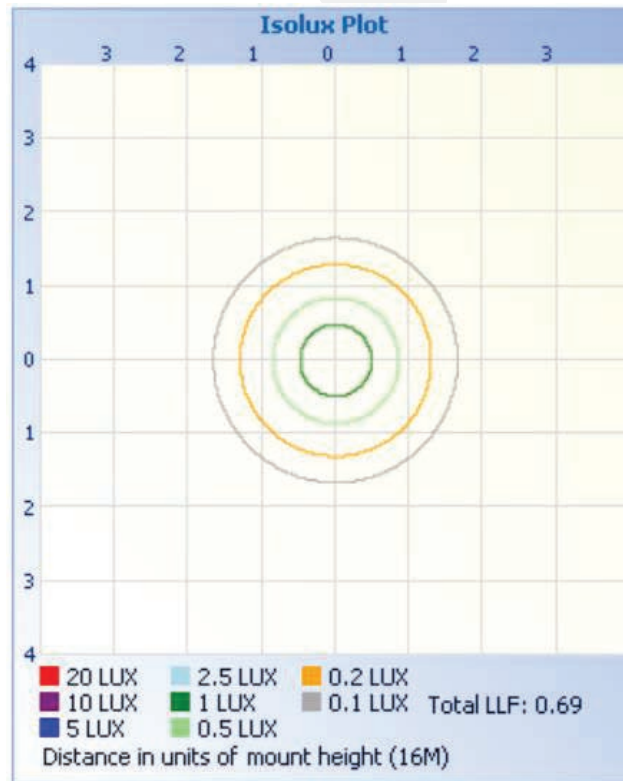


### Goniophotometer Test (SKU #: 155459)

Light Distribution Curve



Isolux Plot





# PLANO™

## LED Disk Light

Installation (SKU #: 155458)

### 6" LED DISK LIGHT INSTALLATION INSTRUCTIONS SURFACE MOUNT

Please read carefully and save these instructions, as you may need them at a later date.

**GENERAL:** ALL ELECTRICAL CONNECTIONS MUST BE IN ACCORDANCE WITH LOCAL AND NATIONAL ELECTRICAL CODE (N.E.C.) STANDARDS. IF YOU ARE UNFAMILIAR WITH PROPER ELECTRICAL WIRING CONNECTIONS OBTAIN THE SERVICES OF A QUALIFIED ELECTRICIAN.

#### WARNING- RISK OF FIRE OR ELECTRIC SHOCK

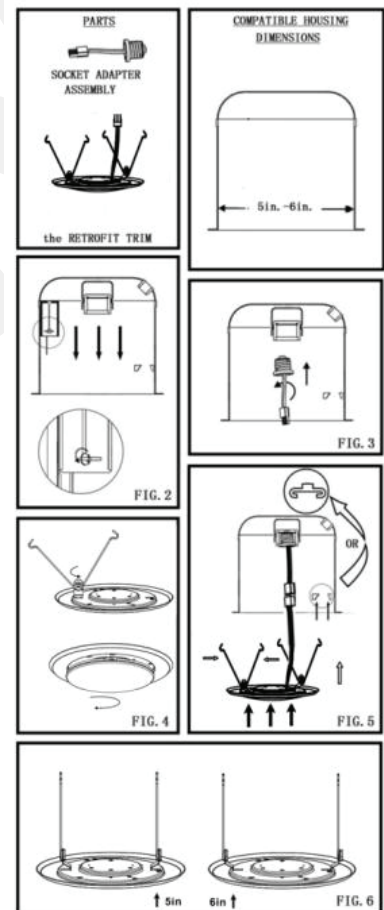
- DO NOT MAKE OR ALTER ANY OPEN HOLES IN THE ENCLOSURE TO THE WIRING OR ELECTRICAL COMPONENTS DURING KIT INSTALLATION.
- TO PREVENT WIRING DAMAGE OR ABRASION, DO NOT EXPOSE WIRING TO EDGES OF SHEET METAL OR OTHER SHARP OBJECTS.
- SUITABLE FOR WET LOCATIONS
- SUITABLE FOR TYPE IC OR SUITABLE FOR TYPE NON-IC -USE ONLY IN OPEN LUMINAIRES
- THIS DEVICE IS NOT INTENDED FOR USE WITH EMERGENCY EXITS

#### ASSEMBLY AND INSTALLATION

This IC/AT fixture is intended for use in suspended ceilings (with or without insulation). Shut off power before installation

- Prepare fixture for recessed installation.(FIG.1)
- Remove lens by twisting counter clockwise. (FIG.2)
- Connect supply wires to wires on fixture with wire nuts or push wires into Quick Connector.Connect white to white , black to black,and copper wire to copper wire as grounding connection.(FIG.3)
- Arrange the wires into the back of the junction box.
- Align appropriate holes in the mounting fixture with the holes in the junction box.Using 2 of the longer screws (either #6 or #8 screws depending on the size of the holes in your junction box) attach the mounting fixture is flush with the ceiling. Do not over-tighten screws or fixture will not be tight to ceiling. (FIG.4)
- Complete the installation by turn lens clockwise to lock. (FIG.5)

**WARNING - RISK OF ELECTRIC SHOCK. DISCONNECT MAIN POWER AT FUSE OR CIRCUIT BREAKER BEFORE INSTALLING OR SERVICING THE FIXTURE.**



# PLANO™

## LED Disk Light



Installation (SKU #: 155458)

### 6" LED DISK LIGHT INSTALLATION INSTRUCTIONS RETROFIT

#### ASSEMBLY AND INSTALLATION

##### INCANDESCENT HOUSINGS

- Unscrew the WING NUT inside the CAN to detach the SOCKET BRACKET from the CAN. Disengage the SOCKET from the SOCKET BRACKET. (FIG. 2)
- Thread the SOCKET ADAPTER into the SOCKET. (FIG. 3)
- Place spring on mounting bracket and complete the installation by twisting the lens on the light. (FIG. 4)
- If using TORSION SPRINGS, squeeze both TORSION SPRING arms together and insert into the TORSION SPRING SLOTS (or place spring on mounting bracket RECEIVER BRACKETS) of the CAN. (FIG. 5)
- Tuck all wires into the CAN and carefully push the RETROFIT TRIM into CAN. (NOTE: To provide enough room in shallow cans, carefully position SOCKET ADAPTER and SOCKET adjacent to the long side of the LED DRIVER prior to inserting the RETROFIT TRIM into the CAN.) (FIG. 5)

##### LED HOUSINGS

- Plug the FEMALE CONNECTOR of the RETROFIT TRIM onto the MALE CONNECTOR of the HALO HOUSING. (FIG. 5)
- If using TORSION SPRINGS, squeeze both TORSION SPRING arms together and insert into the TORSION SPRING SLOTS (or RECEIVER BRACKETS) of the CAN. (FIG. 5)
- Tuck all wires into the CAN and carefully push the RETROFIT TRIM into CAN. (NOTE: To provide enough room in shallow cans, carefully position SOCKET ADAPTER and SOCKET adjacent to the long side of the LED DRIVER prior to inserting the RETROFIT TRIM into the CAN.) (FIG. 5)

##### DIMMING

Dimming performance may depend on the dimmer, the dimmer range adjustment setting (for dimmers with brightness range adjustments), the wiring method, and/or the number of LED modules installed onto the dimmer circuit. For dimmer selection, Dimming control manufacturers revise their product often; for the latest list of compatible dimmers please visit our website.

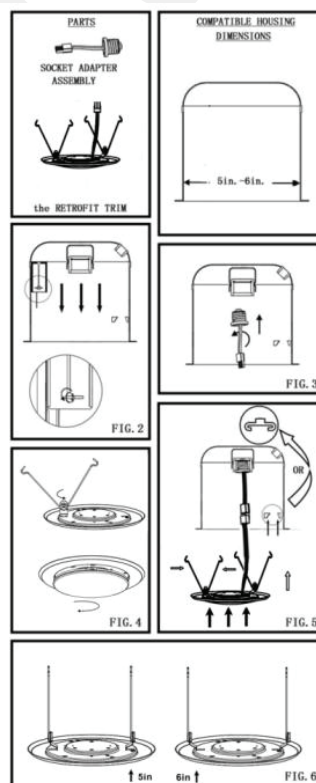
For best results, it is recommended to install a minimum of four LED modules onto one dimmer.

Before turning on the LED lights, set dimmer position at maximum before adjusting to a lower light level. Please follow the dimming control manufacturer's instructions for the installation of all dimming controls.

Following is a list of recommended dimmers:

Brand	Lutron	Leviton
Model	DVCL-153P-WH	6683
	MACL-153M-WH	6672
	S-600PR-WH	6631
	SPSLV-600-WH	6633-P
	DVLV-603P-IV	1A2305
	MALV-600-IV	OB33K1
	MALV-600	
	DVW-603PGH-WH	
	4X603	
	CTCL-153P	
	SLV-600P-WH	
	DVW-603P6H-WH	
	CT-603PG	
	NT-1000	
	S-603P	
	DV-600P	
	RA-6D	

**WARNING - RISK OF ELECTRIC SHOCK. DISCONNECT MAIN POWER AT FUSE OR CIRCUIT BREAKER BEFORE INSTALLING OR SERVICING THE FIXTURE.**



LED DISK LIGHT



# PLANO™

## LED Disk Light

### Installation (SKU #: 155459)

#### 8" LED DISK LIGHT SURFACE MOUNT

Please read carefully and save these instructions, as you may need them at a later date.

GENERAL: ALL ELECTRICAL CONNECTIONS MUST BE IN ACCORDANCE WITH LOCAL AND NATIONAL ELECTRICAL CODE (N.E.C.) STANDARDS. IF YOU ARE UNFAMILIAR WITH PROPER ELECTRICAL WIRING CONNECTIONS OBTAIN THE SERVICES OF A QUALIFIED ELECTRICIAN.

#### WARNING- RISK OF FIRE OR ELECTRIC SHOCK

- DO NOT MAKE OR ALTER ANY OPEN HOLES IN THE ENCLOSURE TO THE WIRING OR ELECTRICAL COMPONENTS DURING KIT INSTALLATION. TO PREVENT WIRING DAMAGE OR ABRASION, DO NOT EXPOSE WIRING TO EDGES OF SHEET METAL OR OTHER SHARP OBJECTS.
  - SUITABLE FOR DAMP LOCATIONS
  - SUITABLE FOR TYPE IC OR SUITABLE FOR TYPE NON-IC USE ONLY IN OPEN LUMINAIRES
- THIS DEVICE IS NOT INTENDED FOR USE WITH EMERGENCY EXITS

#### ASSEMBLY AND INSTALLATION

This IC/AT fixture is intended for use in suspended ceilings(with or without insulation). Shut off power

#### BEFORE INSTALLATION

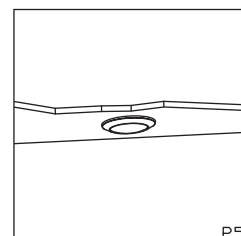
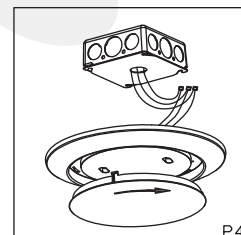
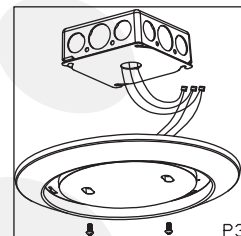
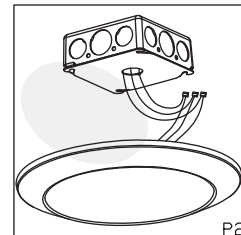
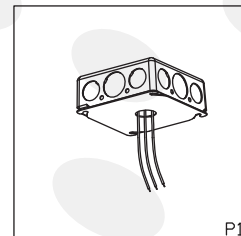
Fix the bracekt to the junction box with screws.(FIG.1)

Connect supply wires to wires on fixture with wire nuts or push wires into Quick Connector.Connect white to white , black to black,and copper wire to copper wire as grounding connection.(FIG.2)

Arrange the wires into the back of the junction box.

- Push the fixture back to the ceiling and make sure the fixture secured in the bracket of junction box.(FIG.3)
- Complete the installation by push the fixture into the ceiling.(FIG.4)

WARNING - RISK OF ELECTRIC SHOCK. DISCONNECT MAIN POWER AT FUSE OR CIRCUIT BREAKER BEFORE INSTALLING OR SERVICING THE FIXTURE



# PLANO™

## LED Disk Light



### Installation (SKU #: 155459)

## 8" LED DISK LIGHT RETROFIT

### ASSEMBLY AND INSTALLATION INCANDESCENT HOUSINGS

- Unscrew the WING NUT inside the CAN to detach the SOCKET BRACKET from the CAN. Disengage the SOCKET from the SOCKET BRACKET.
- Thread the SOCKET ADAPTER into the SOCKET. (FIG. 2)
- Install the Spring Hooks as FIG.5 (For 6 Inch Can) or FIG.6 (For 8 Inch Can) by using M3\*8 self tapping screws.
- Match the Male and Female Plugs and connect them firmly. (FIG. 3) Of using TORSION SPRINGS, squeeze both TORSION SPRING arms together and insert into the TORSION SPRING SLOTS (or place spring on mounting bracket RECEIVER BRACKETS) of the CAN.(FIG. 4)
- Tuck all wires into the CAN and carefully push the RETROFIT TRIM into CAN. (NOTE: To provide enough room in shallow cans, carefully position SOCKET ADAPTER and SOCKET adjacent to the long side of the LED DRIVER prior to inserting the RETROFIT TRIM into the CAN.) (FIG. 4)

### LED HOUSINGS

- Plug the FEMALE CONNECTOR of the RETROFIT TRIM onto the MALE CONNECTOR of the HALO HOUSING. (FIG. 2)
- Install the Spring Hooks as FIG.5 (For 6 Inch Can) or FIG.6 (For 8 Inch Can) by using M3\*8 self tapping screws.
- Match the Male and Female Plugs and connect them firmly. (FIG. 3)
- If using TORSION SPRINGS, squeeze both TORSION SPRING arms together and insert into the TORSION SPRING SLOTS (or RECEIVER BRACKETS) of the CAN. (FIG. 4)
- Tuck all wires into the CAN and carefully push the RETROFIT TRIM into CAN. (NOTE: To provide enough room in shallow cans, carefully position SOCKET ADAPTER and SOCKET adjacent to the long side of the LED DRIVER prior to inserting the RETROFIT TRIM into the CAN.) (FIG. 4)

### DIMMING

Dimming performance may depend on the dimmer, the dimmer range adjustment setting (for dimmers with brightness range adjustments), the wiring method, and/or the number of LED modules installed onto the dimmer circuit.

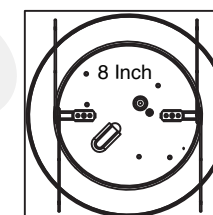
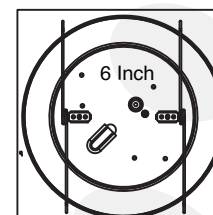
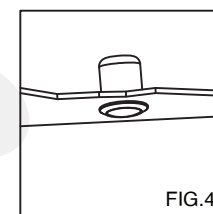
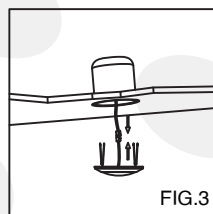
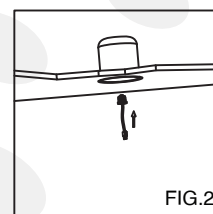
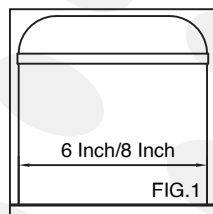
For dimmer selection, Dimming control manufacturers revise their product often; for the latest list of compatible dimmers please visit our website.

For best results, it is recommended to install a minimum of four LED modules onto one dimmer.

Before turning on the LED lights, set dimmer position at maximum before adjusting to a lower light level.

Please follow the dimming control manufacturer's instructions for the installation of all dimming controls.

WARNING - RISK OF ELECTRIC SHOCK.  
DISCONNECT MAIN POWER AT FUSE OR CIRCUIT  
BREAKER BEFORE INSTALLING OR SERVICING  
THE FIXTURE.



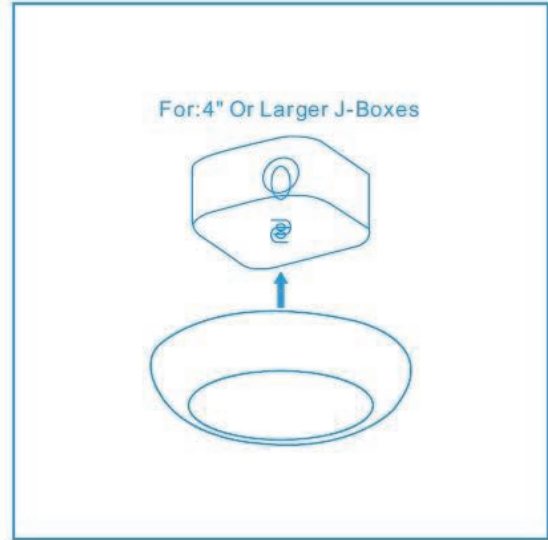




# PLANO™

## LED Disk Light

Easy to Install in 2 ways



### Packaging

Size	Carton Size (Inches)	Pcs/Carton	Net Weight	Gross Weight
6"	15.94 x 13.38 x 8.346	1 / 6 / 12	9.92 LBS	11.02 LBS
8"	18.11 x 10.32 x 10.62	1 / 4 / 8	13.22 LBS	14.33 LBS

### Warranty

5 Years Warranty

# PLANO™

LED Disk Light



## Application



LED DISK LIGHT