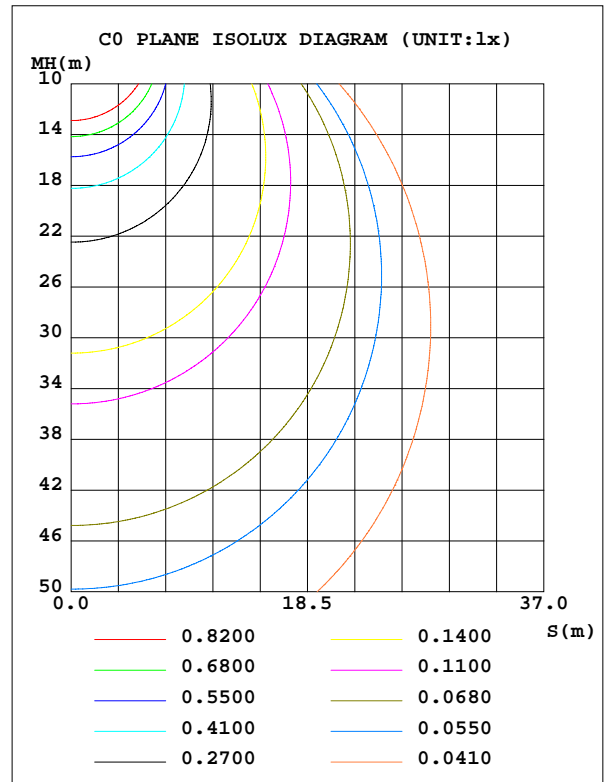
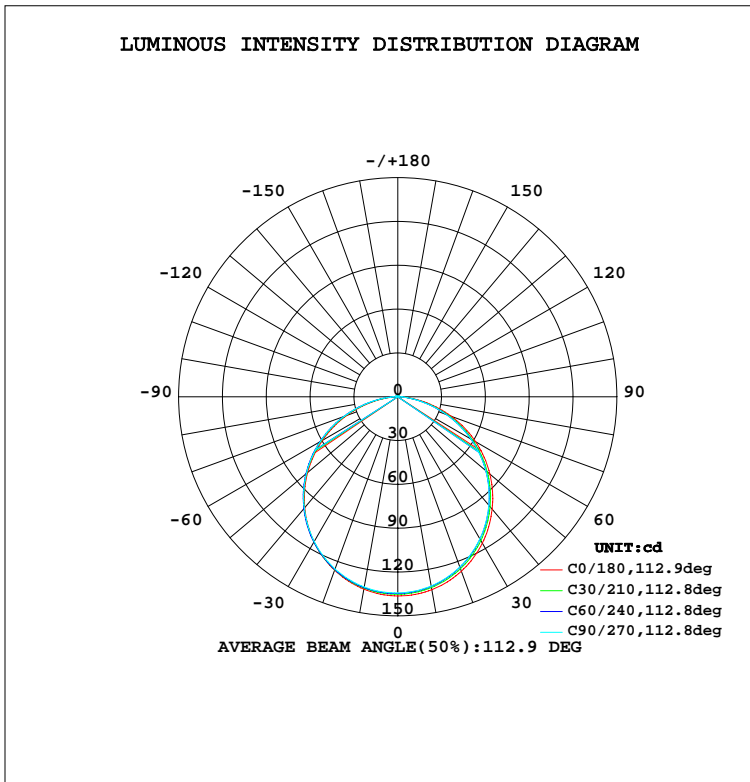


LUMINAIRE PHOTOMETRIC TEST REPORT

Test:U:24.00V I:0.4049A P:9.718W PF:1.000 Lamp Flux:392.759x1 lm		
NAME: Neon lamp belt	TYPE:LED Neon lamp belt	WEIGHT:
SPEC.:	DIM.: 1000*16mm	SERIAL No.:1#
MFR.:	SUR.:1000*16mm	PROTECTION ANGLE:

DATA OF LAMP		PHOTOMETRIC DATA			Eff: 40.42 lm/W
MODEL	CC0TD-A-1-965A50F-F21-1	I _{max} (cd)	136.3	S/MH(C0/180)	1.25
NOMINAL POWER(W)	9.71	LOR(%)	100.0	S/MH(C90/270)	1.27
RATED VOLTAGE(V)	24	TOTAL FLUX(lm)	392.76	η UP, DN(C0-180)	0.7, 48.6
NOMINAL FLUX(lm)	392.759	CIE CLASS	DIRECT	η UP, DN(C180-360)	0.9, 49.7
LAMPS INSIDE	1	η up(%)	1.7	CIBSE SHR NOM	1.25
TEST VOLTAGE(V)	24	η down(%)	98.3	CIBSE SHR MAX	1.35



C Range: 0 - 360DEG
 C Interval: 15.0DEG
 Test Speed: HIGH
 Temperature:25.3DEG
 Operators:Xu liping
 Test Date:2024-03-21

γ Range: 0 - 180DEG
 γ Interval: 1.0DEG
 Test System:EVERFINE GO-2000A_V1 SYSTEM V2.0.287
 Humidity:65.0%
 Test Distance:7.130m [K=1.0000]
 Remarks:



ZONAL FLUX DIAGRAM

ZONAL FLUX DIAGRAM:

γ	C0	C45	C90	C135	C180	C225	C270	C315	γ	Φ zone	Φ total	\$lum,lamp
10	134.1	132.2	131.5	131.3	133.7	132.8	132.3	131.5	0- 10	12.73	12.73	3.24,3.24
20	127.1	124.8	124.1	124.3	126.4	126.0	125.5	124.6	10- 20	36.46	49.19	12.5,12.5
30	115.8	113.2	112.4	112.9	114.6	114.7	114.4	113.4	20- 30	55.25	104.4	26.6,26.6
40	100.5	97.75	96.95	97.71	99.12	99.73	99.62	98.44	30- 40	66.64	171.1	43.6,43.6
50	82.25	79.33	78.62	79.54	80.55	81.66	81.72	80.42	40- 50	69.26	240.3	61.2,61.2
60	61.50	58.49	57.82	58.89	59.51	61.04	61.26	60.01	50- 60	62.81	303.1	77.2,77.2
70	38.85	35.83	35.26	36.43	36.77	38.57	38.98	37.73	60- 70	48.07	351.2	89.4,89.4
80	16.06	13.87	13.43	14.53	14.43	16.24	16.79	15.72	70- 80	27.37	378.6	96.4,96.4
90	0.9645	1.723	1.491	1.595	1.262	1.991	2.384	2.156	80- 90	7.657	386.2	98.3,98.3
100	0.2971	1.143	0.8614	1.006	0.3405	1.252	1.016	1.483	90-100	1.295	387.5	98.7,98.7
110	0.4342	1.074	0.7747	0.9218	0.4752	1.397	1.311	1.166	100-110	1.093	388.6	98.9,98.9
120	0.5689	1.039	0.8535	0.7824	0.6149	1.283	1.260	1.118	110-120	0.9744	389.6	99.2,99.2
130	0.7161	1.031	0.9423	0.8028	0.7521	1.176	1.026	1.110	120-130	0.8453	390.5	99.4,99.4
140	0.8610	1.034	1.013	0.8739	0.8943	1.054	1.059	1.118	130-140	0.7379	391.2	99.6,99.6
150	0.9906	1.064	1.072	0.9730	1.016	1.052	1.125	1.135	140-150	0.6334	391.8	99.8,99.8
160	1.097	1.105	1.128	1.092	1.118	1.143	1.181	1.163	150-160	0.5006	392.3	99.9,99.9
170	1.179	1.156	1.153	1.136	1.191	1.199	1.174	1.181	160-170	0.3238	392.6	100,100
180	1.224	1.219	1.214	1.199	1.235	1.214	1.207	1.196	170-180	0.1132	392.8	100,100
DEG	LUMINOUS INTENSITY:cd									UNIT:lm		

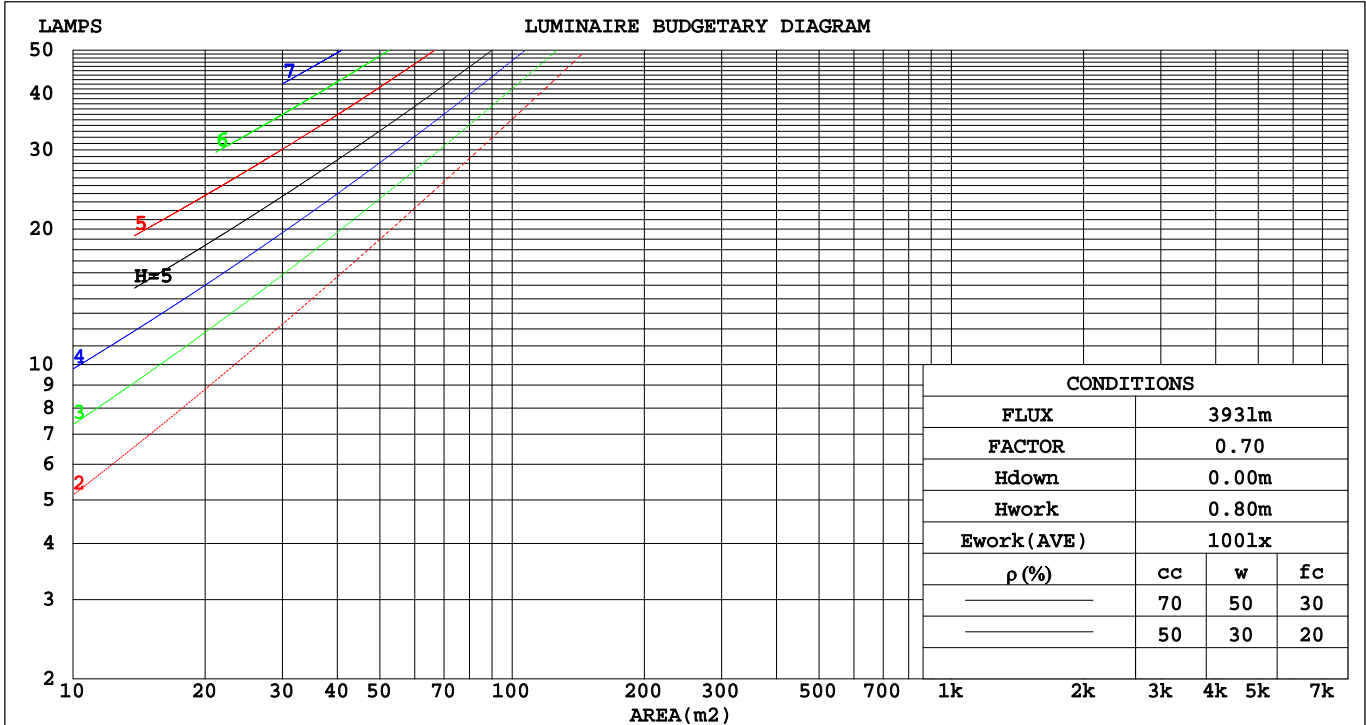
C Range: 0 - 360DEG
 C Interval: 15.0DEG
 Test Speed: HIGH
 Temperature:25.3DEG
 Operators:Xu liping
 Test Date:2024-03-21

γ Range: 0 - 180DEG
 γ Interval: 1.0DEG
 Test System:EVERFINE GO-2000A_V1 SYSTEM V2.0.287
 Humidity:65.0%
 Test Distance:7.130m [K=1.0000]
 Remarks:

CU AND LUMINAIRE BUDGETARY ESTIMATE DIAGRAM

Test:U:24.00V I:0.4049A P:9.718W PF:1.000 Lamp Flux:392.759x1 lm		
NAME: Neon lamp belt	TYPE:LED Neon lamp belt	WEIGHT:
SPEC.:	DIM.: 1000*16mm	SERIAL No.:1#
MFR.:	SUR.:1000*16mm	PROTECTION ANGLE:

ρcc	80%			70%			50%			30%			10%			0
ρw	50%	30%	10%	50%	30%	10%	50%	30%	10%	50%	30%	10%	50%	30%	10%	0
ρfc	20%			20%			20%			20%			20%			0
RCR	RCR:Room Cavity Ratio						Coefficients of Utilization(CU)									
0.0	1.19	1.19	1.19	1.16	1.16	1.16	1.10	1.10	1.10	1.05	1.05	1.05	1.01	1.01	1.01	.98
1.0	1.03	.99	.95	1.01	.97	.93	.96	.93	.90	.92	.90	.87	.88	.86	.84	.82
2.0	.90	.83	.77	.88	.82	.76	.84	.79	.74	.81	.76	.72	.77	.74	.70	.68
3.0	.79	.71	.64	.77	.70	.63	.74	.67	.62	.71	.65	.61	.68	.64	.60	.57
4.0	.70	.61	.54	.68	.60	.54	.66	.59	.53	.63	.57	.52	.61	.55	.51	.49
5.0	.62	.53	.47	.61	.53	.46	.59	.51	.46	.57	.50	.45	.55	.49	.44	.42
6.0	.56	.47	.41	.55	.47	.40	.53	.46	.40	.51	.45	.39	.49	.44	.39	.37
7.0	.51	.42	.36	.50	.42	.36	.48	.41	.35	.47	.40	.35	.45	.39	.35	.32
8.0	.46	.38	.32	.46	.37	.32	.44	.37	.31	.43	.36	.31	.41	.35	.31	.29
9.0	.43	.34	.29	.42	.34	.29	.41	.33	.28	.39	.33	.28	.38	.32	.28	.26
10.0	.39	.31	.26	.39	.31	.26	.38	.31	.26	.36	.30	.25	.35	.30	.25	.24



C Range: 0 - 360DEG
 C Interval: 15.0DEG
 Test Speed: HIGH
 Temperature:25.3DEG
 Operators:Xu liping
 Test Date:2024-03-21

γ Range: 0 - 180DEG
 γ Interval: 1.0DEG
 Test System:EVERFINE GO-2000A_V1 SYSTEM V2.0.287
 Humidity:65.0%
 Test Distance:7.130m [K=1.0000]
 Remarks:

WEC AND CCEC

Test:U:24.00V I:0.4049A P:9.718W PF:1.000 Lamp Flux:392.759x1 lm								
NAME: Neon lamp belt			TYPE:LED Neon lamp belt			WEIGHT:		
SPEC.:			DIM.: 1000*16mm			SERIAL No.:1#		
MFR.:			SUR.:1000*16mm			PROTECTION ANGLE:		

ρ_{cc}	80%			70%			50%			30%			10%			0
ρ_w	50%	30%	10%	50%	30%	10%	50%	30%	10%	50%	30%	10%	50%	30%	10%	0
ρ_{fc}	20%			20%			20%			20%			20%			0
RCR	RCR:Room Cavity Ratio						Wall Exitance Coefficients(WEC)									
0.0																
1.0	.311	.177	.056	.303	.173	.055	.289	.166	.053	.276	.159	.051	.264	.153	.049	
2.0	.292	.160	.049	.285	.157	.048	.273	.152	.047	.261	.147	.046	.251	.142	.045	
3.0	.270	.144	.043	.264	.142	.043	.253	.137	.042	.243	.133	.041	.233	.129	.040	
4.0	.249	.130	.038	.244	.128	.038	.234	.124	.037	.225	.121	.036	.216	.117	.036	
5.0	.230	.117	.034	.226	.116	.034	.217	.113	.033	.209	.110	.033	.201	.107	.032	
6.0	.214	.107	.031	.209	.106	.030	.201	.103	.030	.194	.101	.030	.187	.099	.029	
7.0	.199	.098	.028	.195	.097	.028	.188	.095	.027	.181	.093	.027	.175	.091	.027	
8.0	.186	.091	.025	.182	.090	.025	.176	.088	.025	.170	.086	.025	.164	.084	.025	
9.0	.174	.084	.023	.171	.083	.023	.165	.082	.023	.160	.080	.023	.155	.078	.023	
10.0	.163	.078	.022	.161	.078	.022	.156	.076	.021	.151	.075	.021	.146	.073	.021	

ρ_{cc}	80%			70%			50%			30%			10%			0
ρ_w	50%	30%	10%	50%	30%	10%	50%	30%	10%	50%	30%	10%	50%	30%	10%	0
ρ_{fc}	20%			20%			20%			20%			20%			0
RCR	RCR:Room Cavity Ratio						Ceiling Cavity Exitance Coefficients(CCEC)									
0.0	.203	.203	.203	.174	.174	.174	.118	.118	.118	.068	.068	.068	.022	.022	.022	
1.0	.193	.169	.147	.165	.145	.127	.113	.100	.088	.065	.058	.051	.021	.019	.016	
2.0	.185	.145	.111	.159	.125	.096	.109	.086	.067	.063	.050	.039	.020	.016	.013	
3.0	.177	.127	.087	.152	.110	.076	.104	.076	.053	.060	.045	.031	.019	.014	.010	
4.0	.170	.114	.071	.146	.098	.062	.100	.069	.044	.058	.040	.026	.019	.013	.008	
5.0	.162	.104	.060	.139	.090	.052	.096	.063	.037	.056	.037	.022	.018	.012	.007	
6.0	.155	.095	.052	.133	.082	.045	.092	.058	.032	.053	.034	.019	.017	.011	.006	
7.0	.148	.088	.046	.128	.077	.040	.088	.054	.029	.051	.032	.017	.017	.010	.006	
8.0	.142	.083	.042	.122	.072	.036	.085	.050	.026	.049	.030	.015	.016	.010	.005	
9.0	.136	.078	.038	.117	.067	.033	.081	.047	.024	.047	.028	.014	.015	.009	.005	
10.0	.130	.073	.036	.112	.064	.031	.078	.045	.022	.045	.027	.013	.015	.009	.004	

C Range: 0 - 360DEG
 C Interval: 15.0DEG
 Test Speed: HIGH
 Temperature:25.3DEG
 Operators:Xu liping
 Test Date:2024-03-21

γ Range: 0 - 180DEG
 γ Interval: 1.0DEG
 Test System:EVERFINE GO-2000A_V1 SYSTEM V2.0.287
 Humidity:65.0%
 Test Distance:7.130m [K=1.0000]
 Remarks:

UGR(Unified Glare Rating) Table

Test:U:24.00V I:0.4049A P:9.718W PF:1.000 Lamp Flux:392.759x1 lm										
NAME: Neon lamp belt				TYPE:LED Neon lamp belt				WEIGHT:		
SPEC.:				DIM.: 1000*16mm				SERIAL No.:1#		
MFR.:				SUR.:1000*16mm				PROTECTION ANGLE:		
ceiling/cavity	0.7	0.7	0.5	0.5	0.3	0.7	0.7	0.5	0.5	0.3
walls	0.5	0.3	0.5	0.3	0.3	0.5	0.3	0.5	0.3	0.3
working plane	0.2	0.2	0.2	0.2	0.2	0.2	0.2	0.2	0.2	0.2
Room dimensions	Viewed crosswise					Viewed endwise				
x = 2H y = 2H	19.9	21.4	20.2	21.7	21.9	19.7	21.2	20.0	21.4	21.7
3H	21.5	22.9	21.8	23.1	23.4	21.2	22.5	21.5	22.8	23.1
4H	22.1	23.4	22.5	23.7	24.0	21.7	23.0	22.0	23.3	23.6
6H	22.5	23.8	22.9	24.1	24.4	22.1	23.3	22.4	23.6	23.9
8H	22.7	23.9	23.0	24.2	24.5	22.1	23.3	22.5	23.7	24.0
12H	22.7	23.9	23.1	24.2	24.5	22.2	23.3	22.6	23.7	24.0
4H 2H	20.5	21.8	20.8	22.1	22.4	20.3	21.6	20.6	21.9	22.2
3H	22.2	23.4	22.6	23.7	24.0	21.9	23.1	22.3	23.4	23.8
4H	23.0	24.0	23.4	24.4	24.7	22.6	23.7	23.0	24.0	24.4
6H	23.5	24.4	23.9	24.8	25.2	23.1	24.0	23.5	24.4	24.8
8H	23.7	24.5	24.1	24.9	25.4	23.2	24.1	23.6	24.5	24.9
12H	23.8	24.6	24.2	25.0	25.4	23.3	24.1	23.7	24.5	24.9
8H 4H	23.2	24.0	23.6	24.4	24.9	22.8	23.7	23.3	24.1	24.5
6H	23.8	24.6	24.3	25.0	25.5	23.4	24.2	23.9	24.6	25.1
8H	24.1	24.7	24.6	25.2	25.7	23.6	24.3	24.1	24.7	25.2
12H	24.3	24.8	24.8	25.3	25.8	23.8	24.3	24.3	24.8	25.3
12H 4H	23.2	24.0	23.6	24.4	24.8	22.8	23.6	23.3	24.1	24.5
6H	23.9	24.5	24.4	25.0	25.4	23.5	24.1	24.0	24.6	25.1
8H	24.1	24.7	24.6	25.2	25.7	23.7	24.3	24.2	24.7	25.3
Variations with the observer position at spacings:										
S = 1.0H	+ 0.2 / - 0.2					+ 0.2 / - 0.2				
1.5H	+ 0.2 / - 0.3					+ 0.2 / - 0.3				
2.0H	+ 0.2 / - 0.3					+ 0.2 / - 0.3				

CIE Pub.117 Corrected 392.8 lm Total Lamp Luminous Flux.(8log(F/F0) = -3.2)

C Range: 0 - 360DEG
 C Interval: 15.0DEG
 Test Speed: HIGH
 Temperature:25.3DEG
 Operators:Xu liping
 Test Date:2024-03-21

γ Range: 0 - 180DEG
 γ Interval: 1.0DEG
 Test System:EVERFINE GO-2000A_V1 SYSTEM V2.0.287
 Humidity:65.0%
 Test Distance:7.130m [K=1.0000]
 Remarks:

UTILIZATION FACTORS TABLE

Test:U:24.00V I:0.4049A P:9.718W PF:1.000 Lamp Flux:392.759x1 lm		
NAME: Neon lamp belt	TYPE:LED Neon lamp belt	WEIGHT:
SPEC.:	DIM.: 1000*16mm	SERIAL No.:1#
MFR.:	SUR.:1000*16mm	PROTECTION ANGLE:

REFLECTANCE										
Ceiling	0.8	0.8	0.8	0.7	0.7	0.7	0.5	0.5	0.5	0
Walls	0.7	0.5	0.3	0.7	0.5	0.3	0.7	0.5	0.3	0
Working plane	0.2	0.2	0.2	0.2	0.2	0.2	0.2	0.2	0.2	0
ROOM INDEX	UTILIZATION FACTORS(PERCENT) $k(RI) \times RCR = 5$									
k = 0.60	57	45	38	56	45	38	55	44	38	31
0.80	67	55	48	66	55	48	64	54	47	40
1.00	75	64	57	74	63	56	72	65	56	48
1.25	82	72	65	81	71	64	78	69	63	56
1.50	87	77	70	86	76	70	82	74	69	61
2.00	94	86	79	92	84	78	89	82	77	68
2.50	98	90	84	96	89	83	92	86	81	73
3.00	102	95	89	99	93	88	95	90	86	77
4.00	106	100	95	103	98	94	99	94	91	81
5.00	108	103	99	106	101	97	101	97	94	84
ROOM INDEX	UF(total)									Direct
According to DIN EN 13032-2 2004			Suspended				SHRNOM = 1.25			

C Range: 0 - 360DEG
 C Interval: 15.0DEG
 Test Speed: HIGH
 Temperature:25.3DEG
 Operators:Xu liping
 Test Date:2024-03-21

γ Range: 0 - 180DEG
 γ Interval: 1.0DEG
 Test System:EVERFINE GO-2000A_V1 SYSTEM V2.0.287
 Humidity:65.0%
 Test Distance:7.130m [K=1.0000]
 Remarks:

ISOCANDELA DIAGRAM

Test:U:24.00V I:0.4049A P:9.718W PF:1.000 Lamp Flux:392.759x1 lm		
NAME: Neon lamp belt	TYPE:LED Neon lamp belt	WEIGHT:
SPEC.:	DIM.: 1000*16mm	SERIAL No.:1#
MFR.:	SUR.:1000*16mm	PROTECTION ANGLE:

Conical surface Flux(90deg):

205.95 lm

%lum = 52.4%

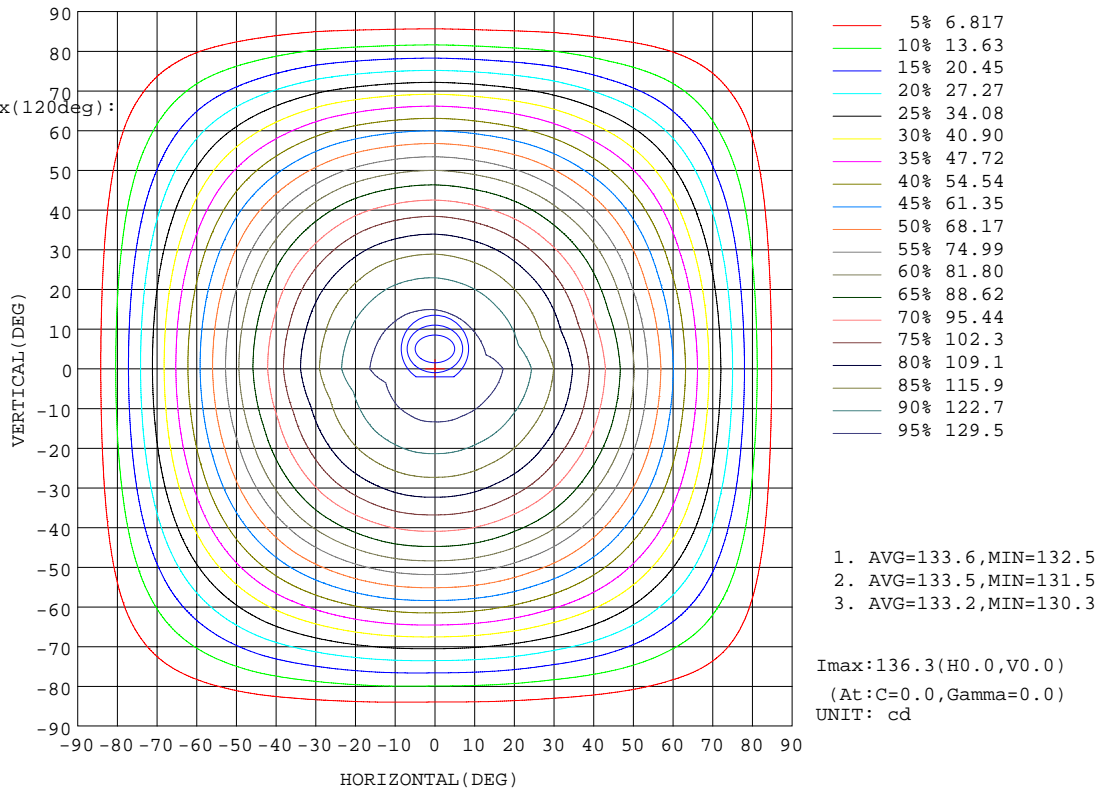
%lamp = 52.4%

Conical surface Flux(120deg):

303.14 lm

%lum = 77.2%

%lamp = 77.2%

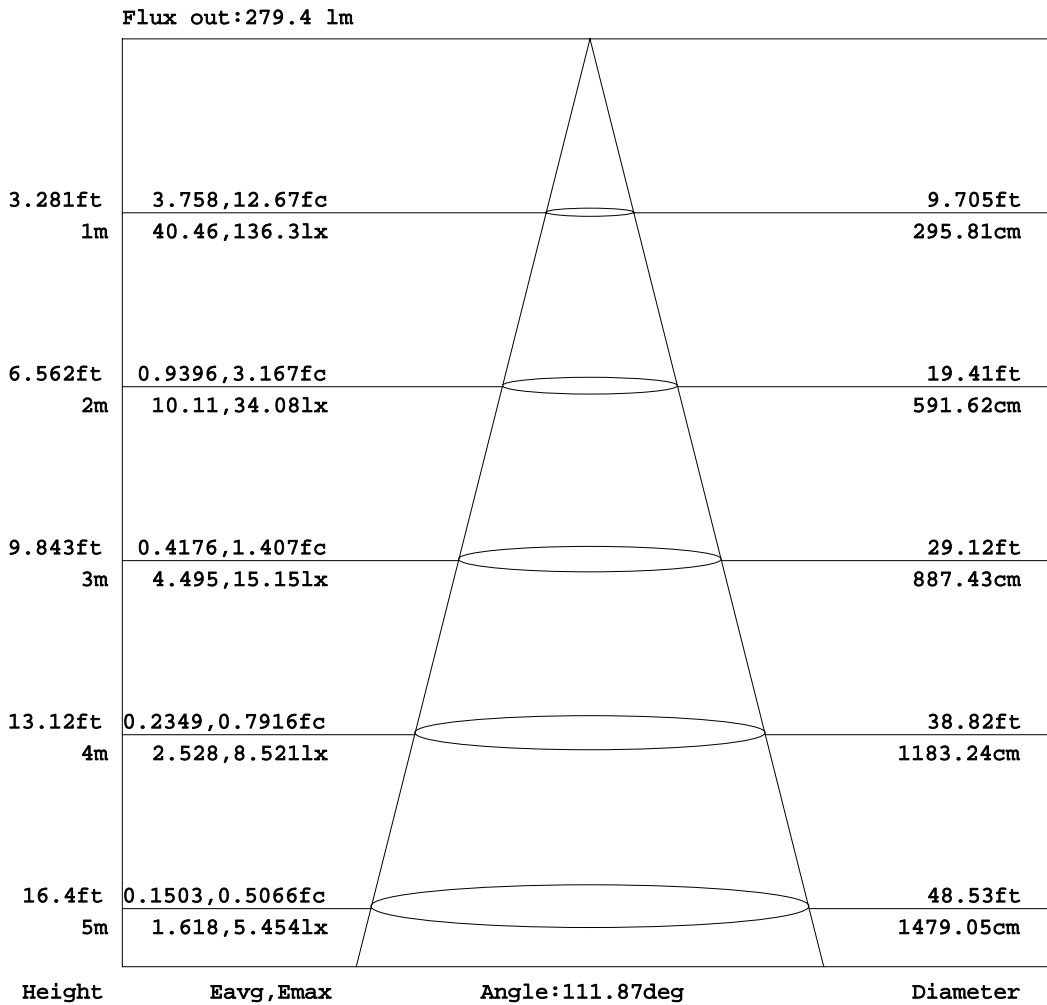


C Range: 0 - 360DEG
 C Interval: 15.0DEG
 Test Speed: HIGH
 Temperature: 25.3DEG
 Operators: Xu liping
 Test Date: 2024-03-21

γ Range: 0 - 180DEG
 γ Interval: 1.0DEG
 Test System: EVERFINE GO-2000A_V1 SYSTEM V2.0.287
 Humidity: 65.0%
 Test Distance: 7.130m [K=1.0000]
 Remarks:

AAI Figure

Test:U:24.00V I:0.4049A P:9.718W PF:1.000 Lamp Flux:392.759x1 lm		
NAME: Neon lamp belt	TYPE:LED Neon lamp belt	WEIGHT:
SPEC.:	DIM.: 1000*16mm	SERIAL No.:1#
MFR.:	SUR.:1000*16mm	PROTECTION ANGLE:



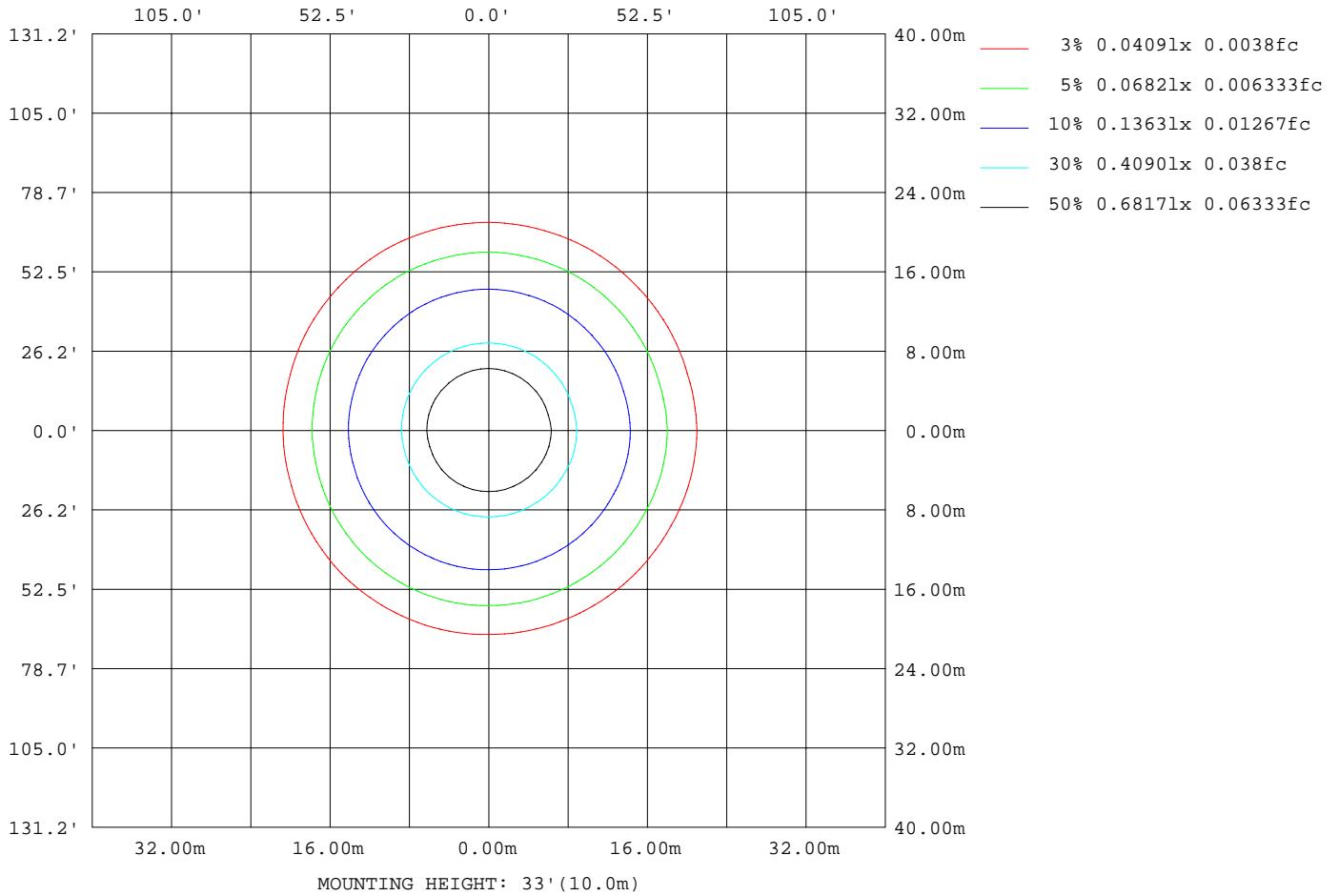
Note:The Curves indicate the illuminated area and the average illumination when the luminaire is at different distance.

C Range: 0 - 360DEG
 C Interval: 15.0DEG
 Test Speed: HIGH
 Temperature:25.3DEG
 Operators:Xu liping
 Test Date:2024-03-21

γ Range: 0 - 180DEG
 γ Interval: 1.0DEG
 Test System:EVERFINE GO-2000A_V1 SYSTEM V2.0.287
 Humidity:65.0%
 Test Distance:7.130m [K=1.0000]
 Remarks:

ISOLUX DIAGRAM

Test:U:24.00V I:0.4049A P:9.718W PF:1.000 Lamp Flux:392.759x1 lm		
NAME: Neon lamp belt	TYPE:LED Neon lamp belt	WEIGHT:
SPEC.:	DIM.: 1000*16mm	SERIAL No.:1#
MFR.:	SUR.:1000*16mm	PROTECTION ANGLE:



C Range: 0 - 360DEG
 C Interval: 15.0DEG
 Test Speed: HIGH
 Temperature:25.3DEG
 Operators:Xu liping
 Test Date:2024-03-21

γ Range: 0 - 180DEG
 γ Interval: 1.0DEG
 Test System:EVERFINE GO-2000A_V1 SYSTEM V2.0.287
 Humidity:65.0%
 Test Distance:7.130m [K=1.0000]
 Remarks:

Average Luminance Table(CIBSE)

Test:U:24.00V I:0.4049A P:9.718W PF:1.000 Lamp Flux:392.759x1 lm		
NAME: Neon lamp belt	TYPE:LED Neon lamp belt	WEIGHT:
SPEC.:	DIM.: 1000*16mm	SERIAL No.:1#
MFR.:	SUR.:1000*16mm	PROTECTION ANGLE:

Parameter description for average Luminance	Symbol	Value	Unit
Luminance in Azimuth Plane	Bc	refer Table 2	cd/sq.m.
Intensity at angle Gamma in given azimuth plane	I	from data	cd/klm
Number of lamps	N	1	
Output of each lamp(initial lumens as specified)	F	392.759	lm
Multiplying factor	K	1	
Luminous area in horizontal plane used in calculations	A	0.016	sq.m.
Angle to the downward vertical from light centre	Gamma	from data	deg

Table 1. Calculation parameters for determination of CIBSE LG3:1996 Average Luminance

G deg	C plane(deg)																		
	0	10	20	30	40	50	60	70	80	90	100	110	120	130	140	150	160	170	180
55	7861	7761	7692	7649	7619	7605	7602	7607	7620	7640	7660	7680	7693	7694	7683	7663	7628	7629	7658
60	7688	7572	7498	7456	7419	7402	7403	7404	7418	7443	7463	7487	7507	7503	7489	7467	7423	7415	7438
65	7441	7340	7254	7187	7143	7124	7126	7131	7146	7171	7196	7223	7245	7241	7225	7196	7144	7127	7143
70	7100	6954	6858	6800	6741	6720	6734	6734	6750	6783	6807	6842	6878	6866	6842	6810	6736	6704	6719
75	6586	6401	6289	6233	6175	6152	6161	6168	6187	6221	6260	6306	6344	6328	6288	6233	6147	6104	6112
80	5782	5599	5475	5399	5341	5325	5344	5365	5395	5438	5503	5558	5583	5563	5501	5402	5265	5191	5194
85	4694	4483	4403	4416	4420	4479	4573	4595	4632	4700	4767	4818	4823	4722	4570	4379	4101	3965	3991

Table 2. Average Luminance(cd/sq.m.) for defined C plane,Gamma angle

CIBSE Category	Gamma (deg)	Average Luminance		Patch Luminance	
		maximum calculated	specified maximum	maximum measured	specified maximum
		Category 1	55 to 90	7861	200
Category 2	65 to 90	7441	200	---	500
Category 3	75 to 90	6586	200	---	500

Table 3. Tabulation of Average and Patch Luminance(cd/sq.m.) for defined CIBSE categories

No match

C Range: 0 - 360DEG
 C Interval: 15.0DEG
 Test Speed: HIGH
 Temperature:25.3DEG
 Operators: Xu liping
 Test Date:2024-03-21

γ Range: 0 - 180DEG
 γ Interval: 1.0DEG
 Test System:EVERFINE GO-2000A_V1 SYSTEM V2.0.287
 Humidity:65.0%
 Test Distance:7.130m [K=1.0000]
 Remarks:

Average Luminance Table(CIBSE)

Test:U:24.00V I:0.4049A P:9.718W PF:1.000 Lamp Flux:392.759x1 lm		
NAME: Neon lamp belt	TYPE:LED Neon lamp belt	WEIGHT:
SPEC.:	DIM.: 1000*16mm	SERIAL No.:1#
MFR.:	SUR.:1000*16mm	PROTECTION ANGLE:

Parameter description for average Luminance	Symbol	Value	Unit
Luminance in Azimuth Plane	Bc	refer Table 2	cd/sq.m.
Intensity at angle Gamma in given azimuth plane	I	from data	cd/klm
Number of lamps	N	1	
Output of each lamp(initial lumens as specified)	F	392.759	lm
Multiplying factor	K	1	
Luminous area in horizontal plane used in calculations	A	0.016	sq.m.
Angle to the downward vertical from light centre	Gamma	from data	deg

Table 1. Calculation parameters for determination of CIBSE LG3:2001 Average Luminance

G deg	C plane(deg)																		
	0	10	20	30	40	50	60	70	80	90	100	110	120	130	140	150	160	170	180
55	7861	7761	7692	7649	7619	7605	7602	7607	7620	7640	7660	7680	7693	7694	7683	7663	7628	7629	7658
60	7688	7572	7498	7456	7419	7402	7403	7404	7418	7443	7463	7487	7507	7503	7489	7467	7423	7415	7438
65	7441	7340	7254	7187	7143	7124	7126	7131	7146	7171	7196	7223	7245	7241	7225	7196	7144	7127	7143
70	7100	6954	6858	6800	6741	6720	6734	6734	6750	6783	6807	6842	6878	6866	6842	6810	6736	6704	6719
75	6586	6401	6289	6233	6175	6152	6161	6168	6187	6221	6260	6306	6344	6328	6288	6233	6147	6104	6112
80	5782	5599	5475	5399	5341	5325	5344	5365	5395	5438	5503	5558	5583	5563	5501	5402	5265	5191	5194
85	4694	4483	4403	4416	4420	4479	4573	4595	4632	4700	4767	4818	4823	4722	4570	4379	4101	3965	3991

Table 2. Average Luminance(cd/sq.m.) for defined C plane,Gamma angle

range (deg)	Maximum measured	Average Luminance(cd/sq.m)			
		Maximum limit for screen type & software category used			
		Type I,II screen Some neg.s'ware	Type I,II screen Only pos.s'ware	Type III screen Some neg.s'ware	Type III screen Only pos.s'ware
55 to 90	7861	1000	1500	200	500
65 to 90	7441	1000	1500	200	500

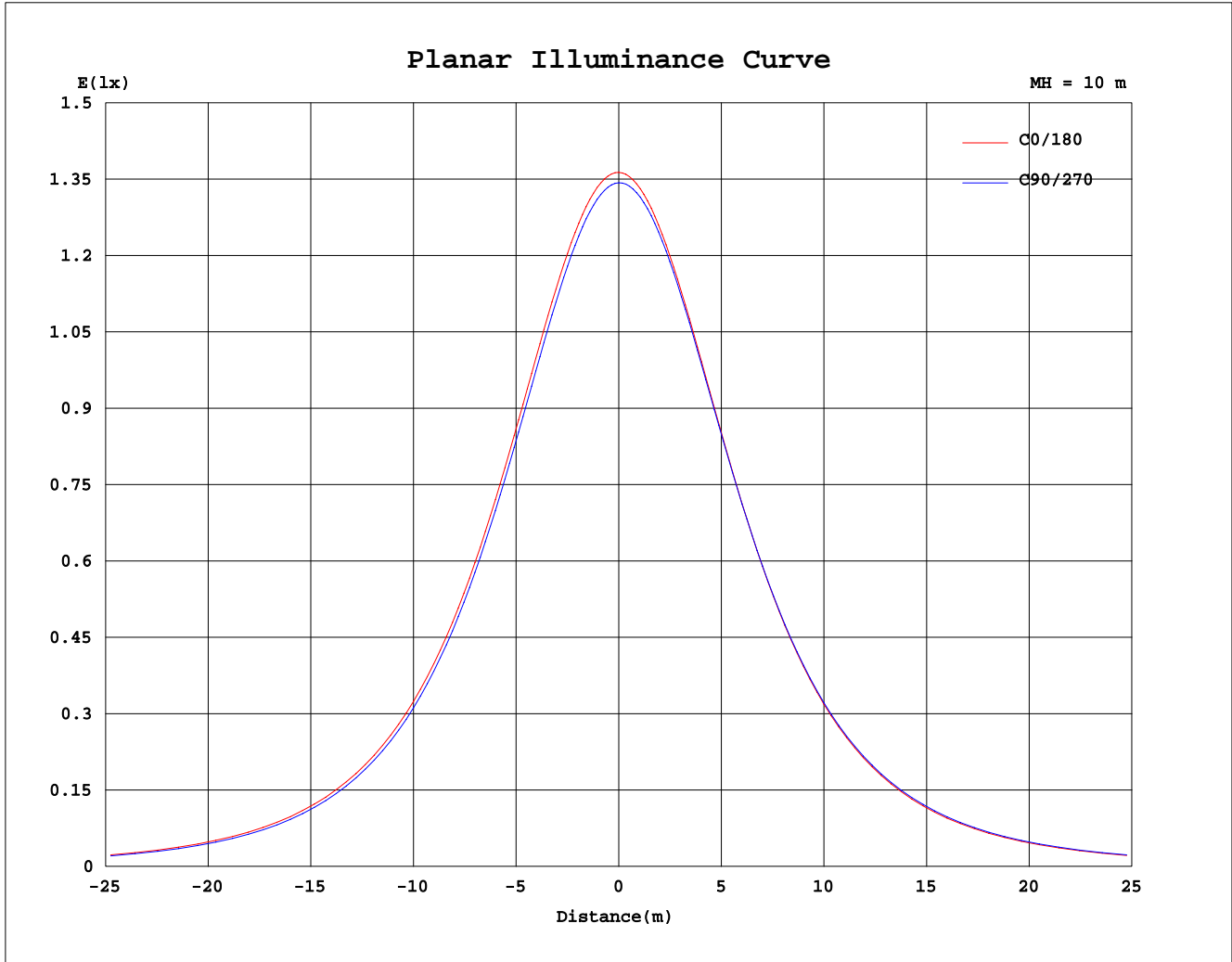
Table 3. Tabulation of average luminance(cd/sq.m.) and luminance limits

No match

C Range: 0 - 360DEG
 C Interval: 15.0DEG
 Test Speed: HIGH
 Temperature:25.3DEG
 Operators:Xu liping
 Test Date:2024-03-21

γ Range: 0 - 180DEG
 γ Interval: 1.0DEG
 Test System:EVERFINE GO-2000A_V1 SYSTEM V2.0.287
 Humidity:65.0%
 Test Distance:7.130m [K=1.0000]
 Remarks:

Planar Illuminance Curve



C Range: 0 - 360DEG
 C Interval: 15.0DEG
 Test Speed: HIGH
 Temperature: 25.3DEG
 Operators: Xu liping
 Test Date: 2024-03-21

γ Range: 0 - 180DEG
 γ Interval: 1.0DEG
 Test System: EVERFINE GO-2000A_V1 SYSTEM V2.0.287
 Humidity: 65.0%
 Test Distance: 7.130m [K=1.0000]
 Remarks:

LUMINOUS DISTRIBUTION INTENSITY DATA

Test:U:24.00V I:0.4049A P:9.718W PF:1.000 Lamp Flux:392.759x1 lm		
NAME: Neon lamp belt	TYPE:LED Neon lamp belt	WEIGHT:
SPEC.:	DIM.: 1000*16mm	SERIAL No.:1#
MFR.:	SUR.:1000*16mm	PROTECTION ANGLE:

Table--1

UNIT: cd

C(DEG) γ (DEG)	0	15	30	45	60	75	90	105	120	135	150	165	180	195	210	225	240	255	270
0	136	136	135	135	135	135	134	134	134	134	134	134	136	136	135	135	135	135	134
5	136	135	135	134	134	134	134	133	133	133	133	133	136	135	135	134	134	134	134
10	134	133	133	132	132	132	132	132	131	131	131	131	134	133	133	133	133	132	132
15	131	130	130	129	129	129	128	128	128	128	128	128	131	130	130	130	130	130	129
20	127	126	125	125	124	124	124	124	124	124	124	124	126	126	126	126	126	126	125
25	122	121	120	119	119	119	119	119	119	119	119	119	121	121	121	121	121	121	120
30	116	115	114	113	113	113	112	113	113	113	113	113	115	114	115	115	115	115	114
35	109	108	106	106	105	105	105	105	105	106	105	105	107	107	108	108	108	108	107
40	101	99.5	98.3	97.7	97.1	97.1	97.0	97.4	97.4	97.7	97.5	97.4	99.1	99.2	99.7	99.7	100	99.7	99.6
45	91.8	90.8	89.5	88.9	88.3	88.3	88.2	88.6	88.7	89.0	88.8	88.8	90.2	90.2	90.9	91.0	91.4	91.0	91.0
50	82.2	81.4	79.9	79.3	78.7	78.7	78.6	79.1	79.3	79.5	79.3	79.3	80.5	80.7	81.4	81.7	82.1	81.7	81.7
55	72.1	71.3	69.8	69.2	68.5	68.6	68.5	69.0	69.1	69.5	69.3	69.3	70.3	70.6	71.4	71.6	72.1	71.8	71.8
60	61.5	60.5	59.2	58.5	57.9	57.9	57.8	58.3	58.6	58.9	58.7	58.7	59.5	59.9	60.7	61.0	61.5	61.3	61.3
65	50.3	49.5	48.0	47.3	46.7	46.7	46.7	47.2	47.5	47.8	47.7	47.6	48.3	48.7	49.6	50.0	50.5	50.3	50.3
70	38.9	37.9	36.6	35.8	35.3	35.3	35.3	35.8	36.1	36.4	36.3	36.3	36.8	37.1	38.2	38.6	39.2	38.9	39.0
75	27.3	26.3	25.1	24.5	24.0	24.0	23.9	24.4	24.8	25.1	25.0	24.9	25.3	25.7	26.7	27.2	27.8	27.6	27.6
80	16.1	15.4	14.3	13.9	13.4	13.5	13.4	14.0	14.2	14.5	14.3	14.2	14.4	14.7	15.7	16.2	16.9	16.7	16.8
85	6.55	6.07	5.64	5.48	5.39	5.45	5.41	5.74	5.78	5.86	5.62	5.42	5.57	5.70	6.59	7.10	7.67	7.64	7.70
90	0.96	1.73	1.74	1.72	1.71	1.63	1.49	1.57	1.61	1.60	1.48	1.42	1.26	1.50	1.74	1.99	2.29	2.35	2.38
95	0.24	1.08	1.35	1.35	1.27	1.07	0.89	0.92	1.00	1.09	1.14	1.13	0.28	1.34	1.25	1.12	1.03	0.97	0.95
100	0.30	0.86	1.16	1.14	1.12	1.00	0.86	0.89	0.95	1.01	1.04	0.96	0.34	1.34	1.37	1.25	1.13	1.04	1.02
105	0.37	0.78	1.08	1.10	1.04	0.89	0.76	0.80	0.87	0.87	0.97	0.73	0.41	1.24	1.41	1.37	1.30	1.22	1.20
110	0.43	0.69	1.04	1.07	1.03	0.90	0.77	0.80	0.78	0.92	0.83	0.58	0.48	1.05	1.32	1.40	1.40	1.35	1.31
115	0.50	0.63	1.00	1.05	1.03	0.92	0.82	0.84	0.88	0.79	0.76	0.56	0.54	0.93	1.27	1.32	1.46	1.40	1.34
120	0.57	0.62	0.95	1.04	1.03	0.95	0.85	0.86	0.74	0.78	0.73	0.59	0.61	0.87	1.20	1.28	1.27	1.38	1.26
125	0.64	0.67	0.90	1.04	1.03	0.97	0.90	0.82	0.77	0.78	0.73	0.64	0.69	0.86	1.12	1.23	1.22	1.25	1.11
130	0.72	0.72	0.89	1.03	1.04	0.99	0.94	0.88	0.80	0.80	0.76	0.70	0.75	0.87	1.06	1.18	1.16	1.16	1.03
135	0.79	0.80	0.91	1.03	1.05	1.01	0.98	0.83	0.84	0.83	0.80	0.77	0.82	0.90	1.02	1.11	1.08	0.94	1.02
140	0.86	0.86	0.94	1.03	1.06	1.03	1.01	0.89	0.89	0.87	0.86	0.83	0.89	0.94	1.01	1.05	1.03	0.93	1.06
145	0.93	0.92	0.98	1.04	1.06	1.06	1.04	0.94	0.93	0.92	0.91	0.90	0.96	1.01	1.02	1.04	1.02	0.97	1.10
150	0.99	0.97	1.02	1.06	1.08	1.08	1.07	0.99	0.98	0.97	0.99	0.96	1.02	1.05	1.08	1.05	1.03	1.02	1.13
155	1.05	1.03	1.05	1.08	1.10	1.11	1.10	1.03	1.02	1.06	1.03	1.01	1.07	1.09	1.12	1.13	1.07	1.06	1.15
160	1.10	1.08	1.08	1.11	1.13	1.13	1.13	1.08	1.07	1.09	1.06	1.06	1.12	1.13	1.15	1.14	1.11	1.10	1.18
165	1.15	1.13	1.12	1.13	1.14	1.14	1.12	1.11	1.13	1.11	1.10	1.11	1.16	1.16	1.17	1.18	1.18	1.14	1.18
170	1.18	1.17	1.16	1.16	1.16	1.15	1.15	1.15	1.15	1.14	1.14	1.14	1.19	1.19	1.20	1.20	1.21	1.17	1.17
175	1.20	1.20	1.19	1.19	1.19	1.18	1.18	1.18	1.17	1.17	1.17	1.17	1.22	1.21	1.21	1.21	1.21	1.21	1.20
180	1.22	1.23	1.22	1.22	1.22	1.21	1.21	1.21	1.20	1.20	1.19	1.19	1.23	1.22	1.22	1.21	1.22	1.21	1.21

C Range: 0 - 360DEG
 C Interval: 15.0DEG
 Test Speed: HIGH
 Temperature: 25.3DEG
 Operators: Xu liping
 Test Date: 2024-03-21

γ Range: 0 - 180DEG
 γ Interval: 1.0DEG
 Test System: EVERFINE GO-2000A_V1 SYSTEM V2.0.287
 Humidity: 65.0%
 Test Distance: 7.130m [K=1.0000]
 Remarks:

LUMINOUS DISTRIBUTION INTENSITY DATA

Test:U:24.00V I:0.4049A P:9.718W PF:1.000 Lamp Flux:392.759x1 lm		
NAME: Neon lamp belt	TYPE:LED Neon lamp belt	WEIGHT:
SPEC.:	DIM.: 1000*16mm	SERIAL No.:1#
MFR.:	SUR.:1000*16mm	PROTECTION ANGLE:

Table--2

UNIT: cd

C(DEG) γ (DEG)	285	300	315	330	345														
0	134	134	134	134	134														
5	134	133	133	133	133														
10	132	132	131	131	131														
15	129	129	129	129	128														
20	125	125	125	125	124														
25	120	120	119	119	119														
30	114	114	113	113	113														
35	107	107	106	106	106														
40	99.1	98.9	98.4	98.4	98.3														
45	90.5	90.3	89.8	89.8	89.6														
50	81.1	80.9	80.4	80.5	80.4														
55	71.2	71.0	70.5	70.6	70.5														
60	60.7	60.6	60.0	60.1	59.9														
65	49.8	49.6	49.1	49.2	49.1														
70	38.4	38.4	37.7	37.9	37.6														
75	27.2	27.1	26.5	26.5	26.2														
80	16.4	16.3	15.7	15.7	15.4														
85	7.39	7.36	6.88	6.68	6.27														
90	2.35	2.39	2.16	1.99	1.76														
95	1.12	1.32	1.42	1.47	1.35														
100	1.19	1.40	1.48	1.36	1.19														
105	1.32	1.46	1.37	1.19	1.03														
110	1.37	1.37	1.17	1.15	0.95														
115	1.29	1.14	1.13	1.11	0.90														
120	1.12	1.08	1.12	1.09	0.87														
125	1.01	1.08	1.12	1.07	0.86														
130	1.03	1.10	1.11	1.07	0.88														
135	1.06	1.11	1.11	1.06	0.92														
140	1.09	1.12	1.12	1.06	0.95														
145	1.12	1.14	1.13	1.08	0.99														
150	1.14	1.15	1.14	1.10	1.03														
155	1.16	1.16	1.15	1.12	1.07														
160	1.16	1.18	1.16	1.13	1.11														
165	1.19	1.19	1.18	1.15	1.13														
170	1.20	1.20	1.18	1.17	1.16														
175	1.21	1.20	1.18	1.18	1.18														
180	1.21	1.20	1.20	1.20	1.19														

C Range: 0 - 360DEG
 C Interval: 15.0DEG
 Test Speed: HIGH
 Temperature:25.3DEG
 Operators:Xu liping
 Test Date:2024-03-21

γ Range: 0 - 180DEG
 γ Interval: 1.0DEG
 Test System:EVERFINE GO-2000A_V1 SYSTEM V2.0.287
 Humidity:65.0%
 Test Distance:7.130m [K=1.0000]
 Remarks: