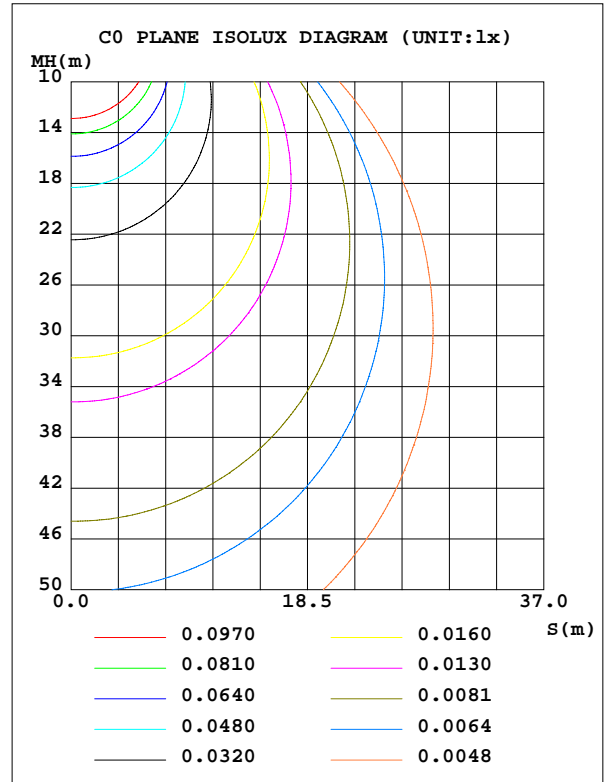
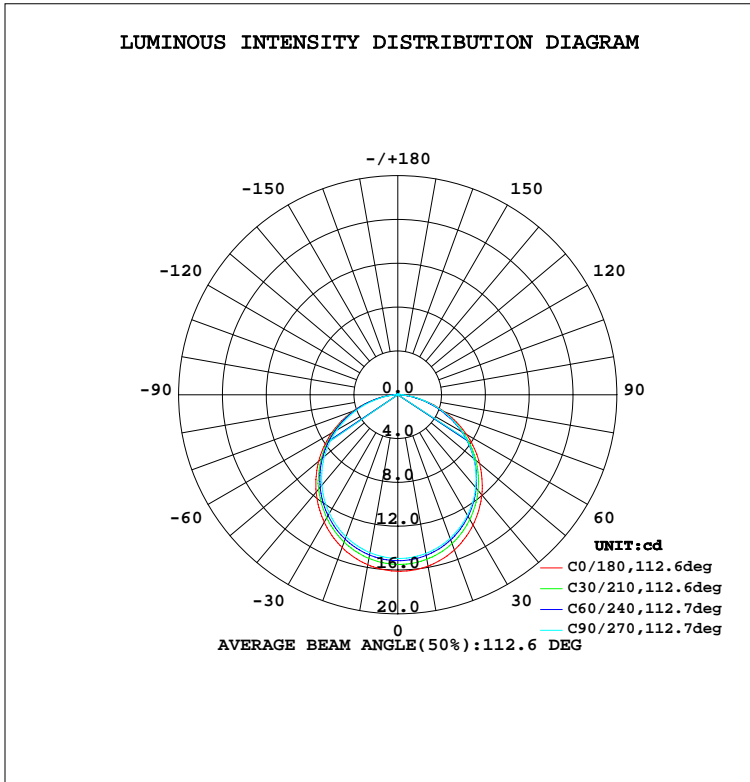


LUMINAIRE PHOTOMETRIC TEST REPORT

Test:U:24.00V I:0.4075A P:9.780W PF:1.000 Lamp Flux:43.9269x1 lm		
NAME: Neon lamp belt	TYPE:LED Neon lamp belt	WEIGHT:
SPEC.:	DIM.: 1000*16mm	SERIAL No.:1#
MFR.:	SUR.:1000*16mm	PROTECTION ANGLE:

DATA OF LAMP		PHOTOMETRIC DATA			Eff: 4.49 lm/W
MODEL	RX1CC0TD-A-1-R2KA-F21-1	I _{max} (cd)	16.12	S/MH(C0/180)	1.24
NOMINAL POWER(W)	9.78	LOR(%)	100.0	S/MH(C90/270)	1.24
RATED VOLTAGE(V)	24	TOTAL FLUX(lm)	43.927	η UP, DN(C0-180)	0.8, 50.2
NOMINAL FLUX(lm)	43.9269	CIE CLASS	DIRECT	η UP, DN(C180-360)	0.7, 48.2
LAMPS INSIDE	1	η up(%)	1.6	CIBSE SHR NOM	1.25
TEST VOLTAGE(V)	24	η down(%)	98.4	CIBSE SHR MAX	1.35



C Range: 0 - 360DEG
 C Interval: 15.0DEG
 Test Speed: HIGH
 Temperature: 25.3DEG
 Operators: Xu liping
 Test Date: 2024-03-21

γ Range: 0 - 180DEG
 γ Interval: 1.0DEG
 Test System: EVERFINE GO-2000A_V1 SYSTEM V2.0.289
 Humidity: 65.0%
 Test Distance: 7.130m [K=1.0000]
 Remarks:



ZONAL FLUX DIAGRAM

ZONAL FLUX DIAGRAM:

γ	C0	C45	C90	C135	C180	C225	C270	C315	γ	Φ zone	Φ total	$\$lum, lamp$
10	15.88	15.04	14.71	14.50	15.75	14.98	14.63	14.40	0- 10	1.430	1.430	3.26,3.26
20	15.09	14.27	13.95	13.77	14.85	14.13	13.79	13.56	10- 20	4.094	5.524	12.6,12.6
30	13.73	12.99	12.71	12.57	13.43	12.80	12.50	12.26	20- 30	6.199	11.72	26.7,26.7
40	11.93	11.26	11.06	10.96	11.59	11.07	10.78	10.54	30- 40	7.473	19.20	43.7,43.7
50	9.747	9.201	9.071	9.036	9.424	9.000	8.738	8.484	40- 50	7.760	26.96	61.4,61.4
60	7.252	6.826	6.800	6.826	6.975	6.660	6.414	6.164	50- 60	7.028	33.98	77.4,77.4
70	4.540	4.258	4.321	4.413	4.328	4.145	3.906	3.642	60- 70	5.365	39.35	89.6,89.6
80	1.811	1.710	1.849	1.995	1.740	1.676	1.494	1.262	70- 80	3.044	42.39	96.5,96.5
90	0.0896	0.1774	0.2498	0.2941	0.1902	0.2164	0.1622	0.1095	80- 90	0.8454	43.24	98.4,98.4
100	0.0279	0.0965	0.0762	0.1144	0.0356	0.1347	0.0814	0.0737	90-100	0.1212	43.36	98.7,98.7
110	0.0482	0.0965	0.1041	0.1296	0.0483	0.1347	0.0813	0.0762	100-110	0.0997	43.46	98.9,98.9
120	0.0584	0.0737	0.1371	0.1499	0.0686	0.1143	0.0864	0.0813	110-120	0.0965	43.56	99.2,99.2
130	0.0762	0.0839	0.1575	0.1677	0.0864	0.1067	0.0991	0.0939	120-130	0.0934	43.65	99.4,99.4
140	0.0939	0.0940	0.1372	0.1854	0.1041	0.1117	0.1092	0.0990	130-140	0.0880	43.74	99.6,99.6
150	0.1067	0.1041	0.1118	0.1880	0.1194	0.1143	0.1219	0.1067	140-150	0.0769	43.81	99.7,99.7
160	0.1169	0.1169	0.1143	0.2007	0.1296	0.1245	0.1296	0.1143	150-160	0.0601	43.87	99.9,99.9
170	0.1219	0.1245	0.1220	0.1981	0.1372	0.1321	0.1194	0.1849	160-170	0.0387	43.91	100,100
180	0.1346	0.1321	0.1270	0.1727	0.1397	0.1321	0.1219	0.1829	170-180	0.0135	43.93	100,100
DEG	LUMINOUS INTENSITY:cd									UNIT:lm		

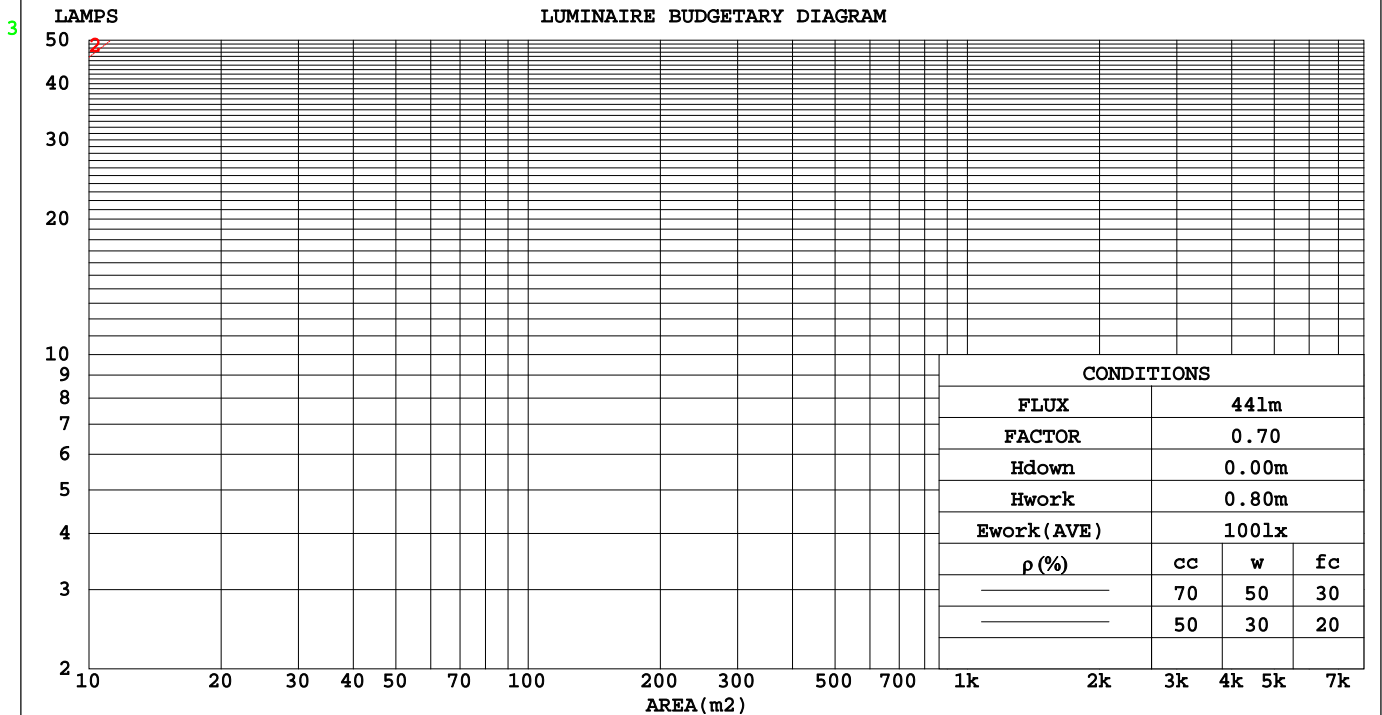
C Range: 0 - 360DEG
 C Interval: 15.0DEG
 Test Speed: HIGH
 Temperature:25.3DEG
 Operators:Xu liping
 Test Date:2024-03-21

γ Range: 0 - 180DEG
 γ Interval: 1.0DEG
 Test System:EVERFINE GO-2000A_V1 SYSTEM V2.0.287
 Humidity:65.0%
 Test Distance:7.130m [K=1.0000]
 Remarks:

CU AND LUMINAIRE BUDGETARY ESTIMATE DIAGRAM

Test:U:24.00V I:0.4075A P:9.780W PF:1.000 Lamp Flux:43.9269x1 lm		
NAME: Neon lamp belt	TYPE:LED Neon lamp belt	WEIGHT:
SPEC.:	DIM.: 1000*16mm	SERIAL No.:1#
MFR.:	SUR.:1000*16mm	PROTECTION ANGLE:

pcc	80%			70%			50%			30%			10%			0
	50%	30%	10%	50%	30%	10%	50%	30%	10%	50%	30%	10%	50%	30%	10%	
pw																0
ρfc																0
RCR	RCR:Room Cavity Ratio						Coefficients of Utilization(CU)									
0.0	1.19	1.19	1.19	1.16	1.16	1.16	1.10	1.10	1.10	1.05	1.05	1.05	1.01	1.01	1.01	.98
1.0	1.03	.99	.95	1.01	.97	.94	.97	.93	.90	.92	.90	.87	.88	.86	.84	.82
2.0	.90	.83	.77	.88	.82	.76	.84	.79	.74	.81	.76	.72	.77	.74	.71	.68
3.0	.79	.71	.64	.77	.70	.64	.74	.68	.62	.71	.66	.61	.68	.64	.60	.57
4.0	.70	.61	.54	.68	.60	.54	.66	.59	.53	.63	.57	.52	.61	.56	.51	.49
5.0	.62	.53	.47	.61	.53	.46	.59	.51	.46	.57	.50	.45	.55	.49	.44	.42
6.0	.56	.47	.41	.55	.47	.40	.53	.46	.40	.51	.45	.39	.50	.44	.39	.37
7.0	.51	.42	.36	.50	.42	.36	.48	.41	.35	.47	.40	.35	.45	.39	.35	.33
8.0	.46	.38	.32	.46	.37	.32	.44	.37	.32	.43	.36	.31	.42	.35	.31	.29
9.0	.43	.34	.29	.42	.34	.29	.41	.33	.28	.39	.33	.28	.38	.32	.28	.26
10.0	.39	.31	.26	.39	.31	.26	.38	.31	.26	.37	.30	.26	.36	.30	.25	.24



C Range: 0 - 360DEG
 C Interval: 15.0DEG
 Test Speed: HIGH
 Temperature:25.3DEG
 Operators:Xu liping
 Test Date:2024-03-21

γ Range: 0 - 180DEG
 γ Interval: 1.0DEG
 Test System:EVERFINE GO-2000A_V1 SYSTEM V2.0.287
 Humidity:65.0%
 Test Distance:7.130m [K=1.0000]
 Remarks:

WEC AND CCEC

Test:U:24.00V I:0.4075A P:9.780W PF:1.000 Lamp Flux:43.9269x1 lm								
NAME: Neon lamp belt			TYPE:LED Neon lamp belt			WEIGHT:		
SPEC.:			DIM.: 1000*16mm			SERIAL No.:1#		
MFR.:			SUR.:1000*16mm			PROTECTION ANGLE:		

ρ_{cc}	80%			70%			50%			30%			10%			0
ρ_w	50%	30%	10%	50%	30%	10%	50%	30%	10%	50%	30%	10%	50%	30%	10%	0
ρ_{fc}	20%			20%			20%			20%			20%			0
RCR	RCR:Room Cavity Ratio						Wall Exitance Coefficients(WEC)									
0.0																
1.0	.310	.176	.056	.303	.173	.055	.288	.166	.053	.275	.159	.051	.263	.153	.049	
2.0	.292	.160	.049	.285	.157	.048	.273	.152	.047	.261	.146	.046	.250	.142	.045	
3.0	.270	.144	.043	.264	.141	.043	.253	.137	.042	.243	.133	.041	.233	.129	.040	
4.0	.249	.129	.038	.244	.128	.038	.234	.124	.037	.225	.121	.036	.216	.117	.036	
5.0	.230	.117	.034	.225	.116	.034	.217	.113	.033	.208	.110	.033	.201	.107	.032	
6.0	.213	.107	.031	.209	.106	.030	.201	.103	.030	.194	.101	.030	.187	.099	.029	
7.0	.199	.098	.028	.195	.097	.028	.188	.095	.027	.181	.093	.027	.175	.091	.027	
8.0	.185	.091	.025	.182	.090	.025	.176	.088	.025	.170	.086	.025	.164	.084	.025	
9.0	.174	.084	.023	.171	.083	.023	.165	.082	.023	.160	.080	.023	.155	.079	.023	
10.0	.163	.078	.022	.161	.078	.022	.155	.076	.021	.151	.075	.021	.146	.073	.021	

ρ_{cc}	80%			70%			50%			30%			10%			0
ρ_w	50%	30%	10%	50%	30%	10%	50%	30%	10%	50%	30%	10%	50%	30%	10%	0
ρ_{fc}	20%			20%			20%			20%			20%			0
RCR	RCR:Room Cavity Ratio						Ceiling Cavity Exitance Coefficients(CCEC)									
0.0	.202	.202	.202	.173	.173	.173	.118	.118	.118	.068	.068	.068	.022	.022	.022	
1.0	.192	.168	.146	.165	.144	.126	.113	.099	.087	.065	.057	.051	.021	.018	.016	
2.0	.184	.144	.110	.158	.124	.095	.108	.086	.066	.062	.050	.039	.020	.016	.013	
3.0	.177	.126	.086	.151	.109	.075	.104	.076	.053	.060	.044	.031	.019	.014	.010	
4.0	.169	.113	.071	.145	.098	.061	.100	.068	.043	.058	.040	.026	.019	.013	.008	
5.0	.162	.103	.059	.139	.089	.052	.096	.062	.037	.055	.036	.022	.018	.012	.007	
6.0	.154	.095	.051	.133	.082	.045	.092	.057	.032	.053	.034	.019	.017	.011	.006	
7.0	.148	.088	.046	.127	.076	.040	.088	.053	.028	.051	.031	.017	.016	.010	.006	
8.0	.141	.082	.041	.122	.071	.036	.084	.050	.025	.049	.029	.015	.016	.010	.005	
9.0	.135	.077	.038	.116	.067	.033	.081	.047	.023	.047	.028	.014	.015	.009	.005	
10.0	.129	.073	.035	.112	.063	.030	.077	.044	.022	.045	.026	.013	.015	.009	.004	

C Range: 0 - 360DEG
 C Interval: 15.0DEG
 Test Speed: HIGH
 Temperature:25.3DEG
 Operators:Xu liping
 Test Date:2024-03-21

γ Range: 0 - 180DEG
 γ Interval: 1.0DEG
 Test System:EVERFINE GO-2000A_V1 SYSTEM V2.0.287
 Humidity:65.0%
 Test Distance:7.130m [K=1.0000]
 Remarks:

UGR(Unified Glare Rating) Table

Test:U:24.00V I:0.4075A P:9.780W PF:1.000 Lamp Flux:43.9269x1 lm		
NAME: Neon lamp belt	TYPE:LED Neon lamp belt	WEIGHT:
SPEC.:	DIM.: 1000*16mm	SERIAL No.:1#
MFR.:	SUR.:1000*16mm	PROTECTION ANGLE:

ceiling/cavity	0.7	0.7	0.5	0.5	0.3	0.7	0.7	0.5	0.5	0.3
walls	0.5	0.3	0.5	0.3	0.3	0.5	0.3	0.5	0.3	0.3
working plane	0.2	0.2	0.2	0.2	0.2	0.2	0.2	0.2	0.2	0.2

Room dimensions		Viewed crosswise					Viewed endwise				
x = 2H y = 2H		12.6	14.1	12.9	14.4	14.6	12.4	13.9	12.6	14.1	14.3
	3H	14.2	15.6	14.5	15.9	16.1	13.9	15.3	14.2	15.5	15.8
	4H	14.8	16.1	15.2	16.4	16.7	14.5	15.8	14.9	16.1	16.4
	6H	15.2	16.5	15.6	16.8	17.1	15.0	16.2	15.3	16.5	16.8
	8H	15.3	16.5	15.7	16.9	17.2	15.1	16.3	15.5	16.6	16.9
	12H	15.4	16.5	15.8	16.9	17.2	15.2	16.3	15.6	16.7	17.0
4H	2H	13.2	14.5	13.5	14.8	15.1	13.0	14.3	13.3	14.6	14.9
	3H	14.9	16.1	15.3	16.4	16.8	14.7	15.8	15.1	16.2	16.5
	4H	15.7	16.7	16.1	17.1	17.4	15.4	16.5	15.8	16.8	17.2
	6H	16.2	17.1	16.6	17.5	17.9	16.0	16.9	16.4	17.3	17.7
	8H	16.4	17.2	16.8	17.6	18.0	16.2	17.0	16.6	17.4	17.9
	12H	16.4	17.2	16.9	17.7	18.1	16.3	17.1	16.8	17.5	18.0
8H	4H	15.9	16.8	16.3	17.2	17.6	15.7	16.5	16.1	16.9	17.4
	6H	16.5	17.3	17.0	17.7	18.2	16.4	17.1	16.8	17.5	18.0
	8H	16.8	17.4	17.3	17.9	18.4	16.6	17.3	17.1	17.7	18.2
	12H	16.9	17.5	17.4	18.0	18.5	16.8	17.4	17.3	17.9	18.4
12H	4H	15.9	16.7	16.3	17.1	17.5	15.7	16.5	16.1	16.9	17.3
	6H	16.6	17.2	17.1	17.7	18.2	16.4	17.0	16.9	17.5	18.0
	8H	16.9	17.4	17.4	17.9	18.4	16.7	17.3	17.2	17.7	18.2

Variations with the observer position at spacings:		
S = 1.0H	+ 0.1 / - 0.2	+ 0.2 / - 0.2
1.5H	+ 0.2 / - 0.3	+ 0.2 / - 0.3
2.0H	+ 0.2 / - 0.3	+ 0.2 / - 0.3

CIE Pub.117 Corrected 43.93 lm Total Lamp Luminous Flux.(8log(F/F0) = -10.9)

C Range: 0 - 360DEG
 C Interval: 15.0DEG
 Test Speed: HIGH
 Temperature:25.3DEG
 Operators:Xu liping
 Test Date:2024-03-21

γ Range: 0 - 180DEG
 γ Interval: 1.0DEG
 Test System:EVERFINE GO-2000A_V1 SYSTEM V2.0.287
 Humidity:65.0%
 Test Distance:7.130m [K=1.0000]
 Remarks:

UTILIZATION FACTORS TABLE

Test:U:24.00V I:0.4075A P:9.780W PF:1.000 Lamp Flux:43.9269x1 lm		
NAME: Neon lamp belt	TYPE:LED Neon lamp belt	WEIGHT:
SPEC.:	DIM.: 1000*16mm	SERIAL No.:1#
MFR.:	SUR.:1000*16mm	PROTECTION ANGLE:

REFLECTANCE										
Ceiling	0.8	0.8	0.8	0.7	0.7	0.7	0.5	0.5	0.5	0
Walls	0.7	0.5	0.3	0.7	0.5	0.3	0.7	0.5	0.3	0
Working plane	0.2	0.2	0.2	0.2	0.2	0.2	0.2	0.2	0.2	0
ROOM INDEX	UTILIZATION FACTORS(PERCENT) $k(RI) \times RCR = 5$									
k = 0.60	57	45	38	56	45	38	55	44	38	32
0.80	67	55	48	66	55	48	64	54	47	40
1.00	75	64	57	74	64	57	72	65	56	49
1.25	82	72	65	81	71	64	78	70	63	56
1.50	87	77	70	86	77	70	83	75	69	61
2.00	94	86	79	92	84	78	89	82	77	69
2.50	98	90	84	96	89	83	92	86	81	73
3.00	102	95	89	99	93	88	95	90	86	77
4.00	106	100	95	103	98	94	99	94	91	82
5.00	108	103	99	106	101	97	101	97	94	85
ROOM INDEX	UF(total)									Direct
According to DIN EN 13032-2 2004			Suspended				SHRNOM = 1.25			

C Range: 0 - 360DEG
 C Interval: 15.0DEG
 Test Speed: HIGH
 Temperature:25.3DEG
 Operators:Xu liping
 Test Date:2024-03-21

γ Range: 0 - 180DEG
 γ Interval: 1.0DEG
 Test System:EVERFINE GO-2000A_V1 SYSTEM V2.0.287
 Humidity:65.0%
 Test Distance:7.130m [K=1.0000]
 Remarks:

ISOCANDELA DIAGRAM

Test:U:24.00V I:0.4075A P:9.780W PF:1.000 Lamp Flux:43.9269x1 lm		
NAME: Neon lamp belt	TYPE:LED Neon lamp belt	WEIGHT:
SPEC.:	DIM.: 1000*16mm	SERIAL No.:1#
MFR.:	SUR.:1000*16mm	PROTECTION ANGLE:

Conical surface Flux(90deg):

23.104 lm

%lum = 52.6%

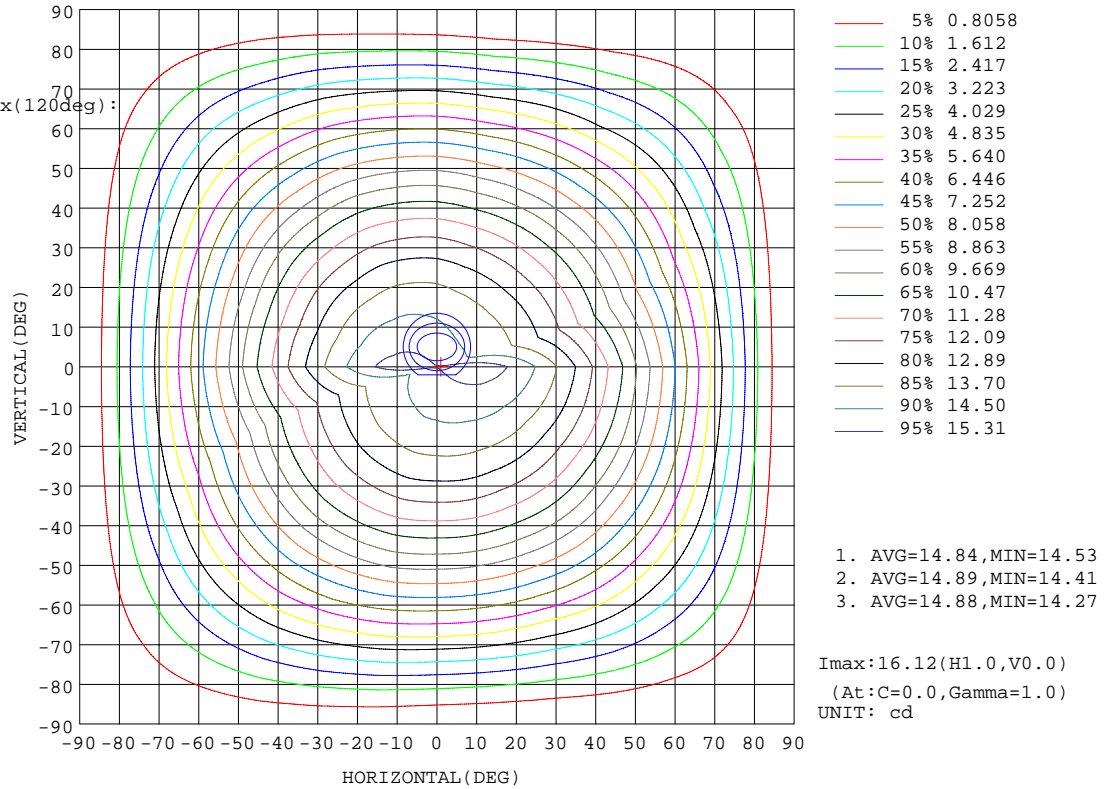
%lamp = 52.6%

Conical surface Flux(120deg):

33.984 lm

%lum = 77.4%

%lamp = 77.4%

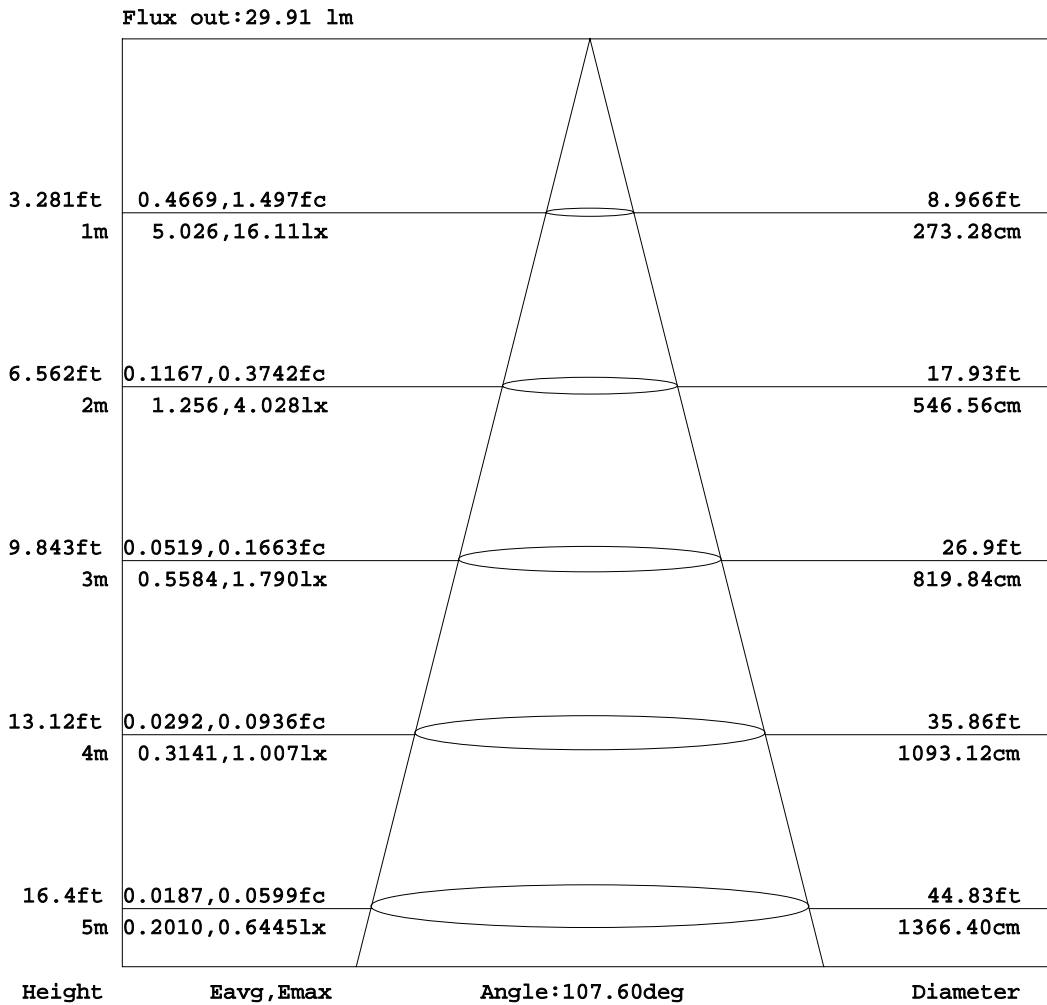


C Range: 0 - 360DEG
 C Interval: 15.0DEG
 Test Speed: HIGH
 Temperature:25.3DEG
 Operators:Xu liping
 Test Date:2024-03-21

γ Range: 0 - 180DEG
 γ Interval: 1.0DEG
 Test System:EVERFINE GO-2000A_V1 SYSTEM V2.0.287
 Humidity:65.0%
 Test Distance:7.130m [K=1.0000]
 Remarks:

AAI Figure

Test:U:24.00V I:0.4075A P:9.780W PF:1.000 Lamp Flux:43.9269x1 lm		
NAME: Neon lamp belt	TYPE:LED Neon lamp belt	WEIGHT:
SPEC.:	DIM.: 1000*16mm	SERIAL No.:1#
MFR.:	SUR.:1000*16mm	PROTECTION ANGLE:



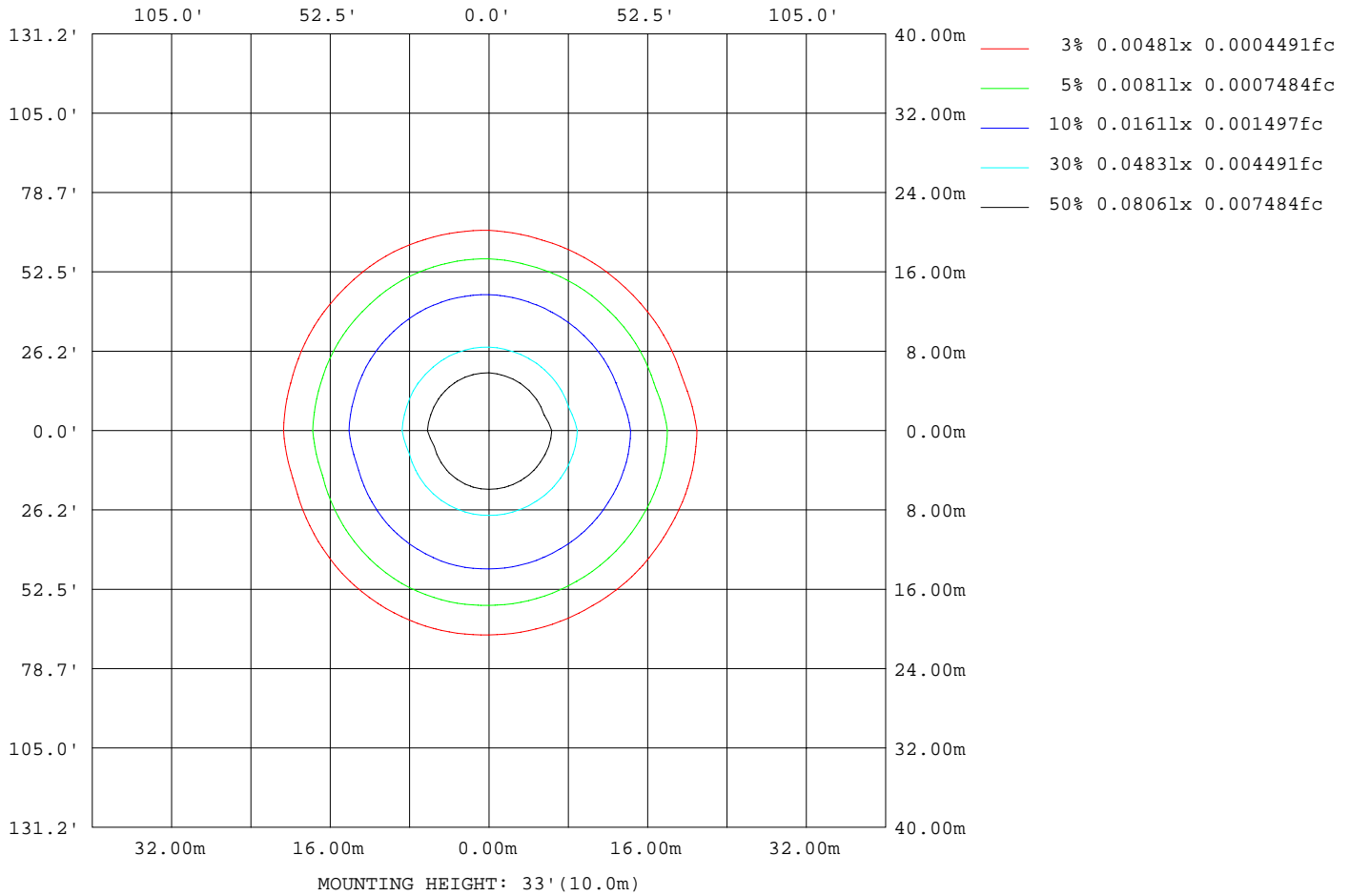
Note:The Curves indicate the illuminated area and the average illumination when the luminaire is at different distance.

C Range: 0 - 360DEG
 C Interval: 15.0DEG
 Test Speed: HIGH
 Temperature:25.3DEG
 Operators:Xu liping
 Test Date:2024-03-21

γ Range: 0 - 180DEG
 γ Interval: 1.0DEG
 Test System:EVERFINE GO-2000A_V1 SYSTEM V2.0.287
 Humidity:65.0%
 Test Distance:7.130m [K=1.0000]
 Remarks:

ISOLUX DIAGRAM

Test:U:24.00V I:0.4075A P:9.780W PF:1.000 Lamp Flux:43.9269x1 lm		
NAME: Neon lamp belt	TYPE:LED Neon lamp belt	WEIGHT:
SPEC.:	DIM.: 1000*16mm	SERIAL No.:1#
MFR.:	SUR.:1000*16mm	PROTECTION ANGLE:



C Range: 0 - 360DEG
 C Interval: 15.0DEG
 Test Speed: HIGH
 Temperature:25.3DEG
 Operators:Xu liping
 Test Date:2024-03-21

γ Range: 0 - 180DEG
 γ Interval: 1.0DEG
 Test System:EVERFINE GO-2000A_V1 SYSTEM V2.0.287
 Humidity:65.0%
 Test Distance:7.130m [K=1.0000]
 Remarks:

Average Luminance Table(CIBSE)

Test:U:24.00V I:0.4075A P:9.780W PF:1.000 Lamp Flux:43.9269x1 lm		
NAME: Neon lamp belt	TYPE:LED Neon lamp belt	WEIGHT:
SPEC.:	DIM.: 1000*16mm	SERIAL No.:1#
MFR.:	SUR.:1000*16mm	PROTECTION ANGLE:

Parameter description for average Luminance	Symbol	Value	Unit
Luminance in Azimuth Plane	Bc	refer Table 2	cd/sq.m.
Intensity at angle Gamma in given azimuth plane	I	from data	cd/klm
Number of lamps	N	1	
Output of each lamp(initial lumens as specified)	F	43.9269	lm
Multiplying factor	K	1	
Luminous area in horizontal plane used in calculations	A	0.016	sq.m.
Angle to the downward vertical from light centre	Gamma	from data	deg

Table 1. Calculation parameters for determination of CIBSE LG3:1996 Average Luminance

G deg	C plane(deg)																		
	0	10	20	30	40	50	60	70	80	90	100	110	120	130	140	150	160	170	180
55	930	886	861	851	842	836	833	834	839	848	856	861	864	863	861	859	851	868	896
60	907	862	837	826	816	809	807	807	814	826	835	843	849	845	841	838	830	845	872
65	874	830	803	789	779	772	769	771	781	794	806	816	821	820	816	811	802	814	837
70	830	782	754	740	727	719	717	720	732	752	766	779	787	785	780	775	762	770	791
75	758	712	682	664	649	641	640	645	662	687	708	725	736	734	727	718	703	706	723
80	652	605	573	552	539	532	534	544	568	602	630	653	668	665	655	640	618	614	626
85	495	447	418	405	401	405	417	437	471	514	553	587	610	606	586	555	515	503	516

Table 2. Average Luminance(cd/sq.m.) for defined C plane,Gamma angle

CIBSE Category	Gamma (deg)	Average Luminance		Patch Luminance	
		maximum calculated	specified maximum	maximum measured	specified maximum
		Category 1	55 to 90	930	200
Category 2	65 to 90	874	200	---	500
Category 3	75 to 90	758	200	---	500

Table 3. Tabulation of Average and Patch Luminance(cd/sq.m.) for defined CIBSE categories

No match

C Range: 0 - 360DEG
 C Interval: 15.0DEG
 Test Speed: HIGH
 Temperature:25.3DEG
 Operators:Xu liping
 Test Date:2024-03-21

γ Range: 0 - 180DEG
 γ Interval: 1.0DEG
 Test System:EVERFINE GO-2000A_V1 SYSTEM V2.0.287
 Humidity:65.0%
 Test Distance:7.130m [K=1.0000]
 Remarks:

Average Luminance Table(CIBSE)

Test:U:24.00V I:0.4075A P:9.780W PF:1.000 Lamp Flux:43.9269x1 lm		
NAME: Neon lamp belt	TYPE:LED Neon lamp belt	WEIGHT:
SPEC.:	DIM.: 1000*16mm	SERIAL No.:1#
MFR.:	SUR.:1000*16mm	PROTECTION ANGLE:

Parameter description for average Luminance	Symbol	Value	Unit
Luminance in Azimuth Plane	Bc	refer Table 2	cd/sq.m.
Intensity at angle Gamma in given azimuth plane	I	from data	cd/klm
Number of lamps	N	1	
Output of each lamp(initial lumens as specified)	F	43.9269	lm
Multiplying factor	K	1	
Luminous area in horizontal plane used in calculations	A	0.016	sq.m.
Angle to the downward vertical from light centre	Gamma	from data	deg

Table 1. Calculation parameters for determination of CIBSE LG3:2001 Average Luminance

G deg	C plane(deg)																		
	0	10	20	30	40	50	60	70	80	90	100	110	120	130	140	150	160	170	180
55	930	886	861	851	842	836	833	834	839	848	856	861	864	863	861	859	851	868	896
60	907	862	837	826	816	809	807	807	814	826	835	843	849	845	841	838	830	845	872
65	874	830	803	789	779	772	769	771	781	794	806	816	821	820	816	811	802	814	837
70	830	782	754	740	727	719	717	720	732	752	766	779	787	785	780	775	762	770	791
75	758	712	682	664	649	641	640	645	662	687	708	725	736	734	727	718	703	706	723
80	652	605	573	552	539	532	534	544	568	602	630	653	668	665	655	640	618	614	626
85	495	447	418	405	401	405	417	437	471	514	553	587	610	606	586	555	515	503	516

Table 2. Average Luminance(cd/sq.m.) for defined C plane,Gamma angle

range (deg)	Maximum measured	Average Luminance(cd/sq.m)			
		Maximum limit for screen type & software category used			
		Type I,II screen Some neg.s'ware	Type I,II screen Only pos.s'ware	Type III screen Some neg.s'ware	Type III screen Only pos.s'ware
55 to 90	930	1000	1500	200	500
65 to 90	874	1000	1500	200	500

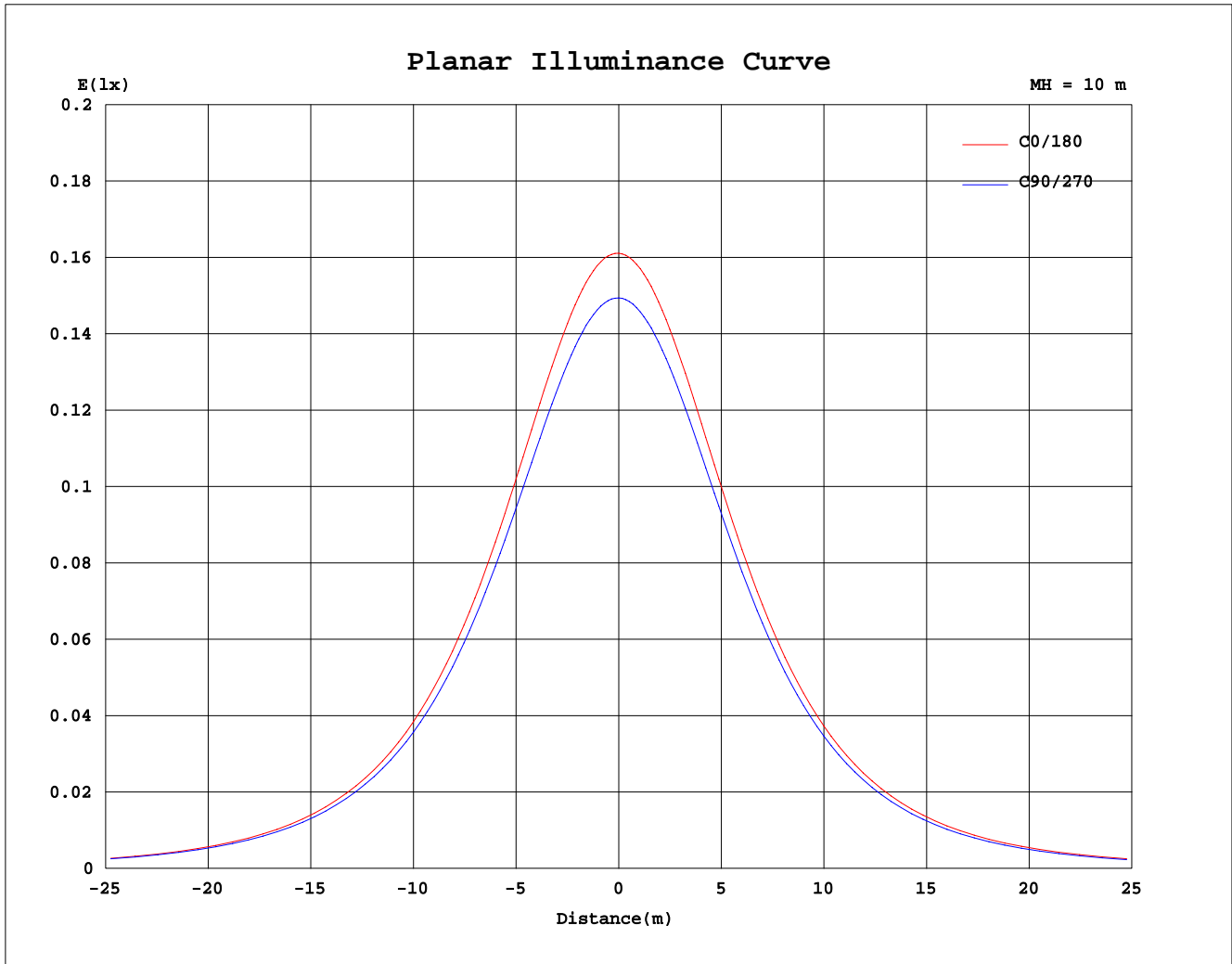
Table 3. Tabulation of average luminance(cd/sq.m.) and luminance limits

The luminaire satisfies the specified luminance criteria for
Negative Software with Type I & II Screen(Good to Moderate treatment).

C Range: 0 - 360DEG
C Interval: 15.0DEG
Test Speed: HIGH
Temperature:25.3DEG
Operators: Xu liping
Test Date:2024-03-21

γ Range: 0 - 180DEG
γ Interval: 1.0DEG
Test System:EVERFINE GO-2000A_V1 SYSTEM V2.0.287
Humidity:65.0%
Test Distance:7.130m [K=1.0000]
Remarks:

Planar Illuminance Curve



C Range: 0 - 360DEG
 C Interval: 15.0DEG
 Test Speed: HIGH
 Temperature: 25.3DEG
 Operators: Xu liping
 Test Date: 2024-03-21

γ Range: 0 - 180DEG
 γ Interval: 1.0DEG
 Test System: EVERFINE GO-2000A_V1 SYSTEM V2.0.287
 Humidity: 65.0%
 Test Distance: 7.130m [K=1.0000]
 Remarks:

LUMINOUS DISTRIBUTION INTENSITY DATA

Test:U:24.00V I:0.4075A P:9.780W PF:1.000 Lamp Flux:43.9269x1 lm		
NAME: Neon lamp belt	TYPE:LED Neon lamp belt	WEIGHT:
SPEC.:	DIM.: 1000*16mm	SERIAL No.:1#
MFR.:	SUR.:1000*16mm	PROTECTION ANGLE:

Table--1

UNIT: cd

C(DEG) γ (DEG)	0	15	30	45	60	75	90	105	120	135	150	165	180	195	210	225	240	255	270
0	16.1	15.7	15.5	15.3	15.1	15.0	14.9	14.9	14.8	14.7	14.7	14.7	16.1	15.7	15.5	15.3	15.1	15.0	14.9
5	16.1	15.7	15.4	15.2	15.1	15.0	14.9	14.8	14.7	14.7	14.6	14.6	16.0	15.6	15.4	15.2	15.1	15.0	14.9
10	15.9	15.5	15.2	15.0	14.9	14.8	14.7	14.7	14.6	14.5	14.4	14.4	15.8	15.4	15.2	15.0	14.9	14.7	14.6
15	15.5	15.2	14.9	14.7	14.6	14.5	14.4	14.4	14.3	14.2	14.1	14.0	15.4	15.0	14.8	14.6	14.5	14.4	14.3
20	15.1	14.8	14.5	14.3	14.1	14.0	14.0	13.9	13.8	13.8	13.7	13.6	14.8	14.5	14.3	14.1	14.0	13.9	13.8
25	14.5	14.2	13.9	13.7	13.5	13.5	13.4	13.4	13.3	13.2	13.1	13.0	14.2	13.9	13.7	13.5	13.4	13.3	13.2
30	13.7	13.5	13.1	13.0	12.8	12.8	12.7	12.7	12.6	12.6	12.4	12.3	13.4	13.1	13.0	12.8	12.7	12.6	12.5
35	12.9	12.6	12.3	12.2	12.0	12.0	11.9	12.0	11.9	11.8	11.7	11.5	12.6	12.3	12.1	12.0	11.9	11.8	11.7
40	11.9	11.7	11.4	11.3	11.1	11.1	11.1	11.1	11.0	11.0	10.8	10.7	11.6	11.3	11.2	11.1	11.0	10.9	10.8
45	10.9	10.7	10.4	10.3	10.1	10.1	10.1	10.2	10.1	10.0	9.87	9.71	10.5	10.3	10.2	10.1	10.0	9.91	9.80
50	9.75	9.55	9.31	9.20	9.08	9.08	9.07	9.16	9.10	9.04	8.86	8.72	9.42	9.18	9.13	9.00	8.98	8.84	8.74
55	8.53	8.38	8.13	8.05	7.94	7.95	7.96	8.05	8.02	7.95	7.79	7.62	8.23	8.02	7.97	7.86	7.84	7.71	7.60
60	7.25	7.12	6.91	6.83	6.74	6.76	6.80	6.90	6.92	6.83	6.65	6.50	6.97	6.79	6.76	6.66	6.65	6.52	6.41
65	5.91	5.81	5.61	5.56	5.48	5.53	5.57	5.69	5.70	5.64	5.47	5.32	5.66	5.51	5.50	5.42	5.41	5.28	5.17
70	4.54	4.44	4.29	4.26	4.19	4.25	4.32	4.45	4.46	4.41	4.25	4.10	4.33	4.21	4.23	4.15	4.15	4.01	3.91
75	3.14	3.08	2.95	2.94	2.90	2.96	3.05	3.19	3.22	3.18	3.03	2.88	2.99	2.90	2.92	2.87	2.87	2.74	2.65
80	1.81	1.78	1.69	1.71	1.68	1.77	1.85	1.99	2.03	1.99	1.85	1.72	1.74	1.68	1.70	1.68	1.68	1.58	1.49
85	0.69	0.68	0.66	0.69	0.70	0.77	0.84	0.94	0.99	0.95	0.84	0.73	0.72	0.66	0.71	0.71	0.72	0.65	0.60
90	0.09	0.13	0.14	0.18	0.19	0.22	0.25	0.29	0.32	0.29	0.24	0.20	0.19	0.22	0.21	0.22	0.21	0.18	0.16
95	0.03	0.08	0.09	0.09	0.08	0.09	0.08	0.08	0.11	0.12	0.14	0.15	0.03	0.18	0.16	0.13	0.11	0.10	0.08
100	0.03	0.07	0.09	0.10	0.08	0.09	0.08	0.08	0.10	0.11	0.14	0.12	0.04	0.17	0.15	0.13	0.11	0.10	0.08
105	0.04	0.05	0.08	0.10	0.09	0.10	0.09	0.08	0.10	0.12	0.14	0.10	0.04	0.15	0.15	0.14	0.11	0.10	0.08
110	0.05	0.05	0.07	0.10	0.10	0.11	0.10	0.10	0.11	0.13	0.13	0.10	0.05	0.13	0.14	0.13	0.11	0.10	0.08
115	0.05	0.05	0.07	0.08	0.11	0.13	0.12	0.12	0.13	0.14	0.14	0.10	0.06	0.12	0.13	0.13	0.11	0.10	0.08
120	0.06	0.06	0.07	0.07	0.08	0.13	0.14	0.13	0.14	0.15	0.14	0.12	0.07	0.11	0.12	0.11	0.09	0.10	0.09
125	0.06	0.07	0.07	0.08	0.07	0.11	0.15	0.14	0.15	0.15	0.15	0.14	0.08	0.11	0.11	0.11	0.09	0.10	0.09
130	0.08	0.08	0.08	0.08	0.08	0.09	0.16	0.15	0.17	0.17	0.16	0.15	0.09	0.10	0.11	0.11	0.09	0.10	0.10
135	0.08	0.08	0.09	0.09	0.08	0.09	0.15	0.16	0.18	0.18	0.17	0.16	0.10	0.10	0.10	0.11	0.10	0.10	0.10
140	0.09	0.09	0.09	0.09	0.09	0.10	0.14	0.17	0.18	0.19	0.18	0.17	0.10	0.11	0.11	0.11	0.11	0.11	0.11
145	0.10	0.10	0.10	0.10	0.09	0.10	0.12	0.16	0.19	0.19	0.20	0.18	0.11	0.12	0.11	0.11	0.11	0.11	0.11
150	0.11	0.11	0.11	0.10	0.10	0.11	0.11	0.15	0.19	0.19	0.20	0.19	0.12	0.12	0.12	0.11	0.11	0.11	0.12
155	0.12	0.11	0.11	0.11	0.10	0.11	0.12	0.14	0.19	0.20	0.21	0.19	0.12	0.12	0.11	0.12	0.12	0.12	0.12
160	0.12	0.12	0.12	0.12	0.11	0.12	0.11	0.13	0.19	0.20	0.20	0.19	0.13	0.13	0.12	0.12	0.13	0.12	0.13
165	0.12	0.13	0.12	0.12	0.11	0.12	0.12	0.12	0.19	0.20	0.20	0.19	0.13	0.13	0.12	0.13	0.13	0.13	0.13
170	0.12	0.12	0.13	0.12	0.11	0.12	0.12	0.11	0.19	0.20	0.20	0.19	0.14	0.13	0.12	0.13	0.13	0.13	0.12
175	0.13	0.12	0.13	0.13	0.12	0.13	0.13	0.12	0.18	0.19	0.19	0.19	0.14	0.13	0.12	0.13	0.13	0.13	0.12
180	0.13	0.13	0.13	0.13	0.13	0.13	0.13	0.13	0.16	0.17	0.18	0.19	0.14	0.13	0.13	0.13	0.13	0.12	0.12

C Range: 0 - 360DEG
 C Interval: 15.0DEG
 Test Speed: HIGH
 Temperature:25.3DEG
 Operators:Xu liping
 Test Date:2024-03-21

γ Range: 0 - 180DEG
 γ Interval: 1.0DEG
 Test System:EVERFINE GO-2000A_V1 SYSTEM V2.0.287
 Humidity:65.0%
 Test Distance:7.130m [K=1.0000]
 Remarks:

LUMINOUS DISTRIBUTION INTENSITY DATA

Test:U:24.00V I:0.4075A P:9.780W PF:1.000 Lamp Flux:43.9269x1 lm		
NAME: Neon lamp belt	TYPE:LED Neon lamp belt	WEIGHT:
SPEC.:	DIM.: 1000*16mm	SERIAL No.:1#
MFR.:	SUR.:1000*16mm	PROTECTION ANGLE:

Table--2

UNIT: cd

C(DEG) γ (DEG)	285	300	315	330	345														
0	14.9	14.8	14.7	14.7	14.7														
5	14.7	14.7	14.6	14.6	14.6														
10	14.5	14.4	14.4	14.4	14.4														
15	14.1	14.1	14.1	14.1	14.1														
20	13.6	13.6	13.6	13.6	13.7														
25	13.0	13.0	13.0	13.0	13.1														
30	12.3	12.3	12.3	12.3	12.4														
35	11.5	11.5	11.4	11.5	11.6														
40	10.6	10.5	10.5	10.6	10.7														
45	9.61	9.56	9.56	9.67	9.77														
50	8.53	8.48	8.48	8.61	8.72														
55	7.39	7.35	7.35	7.48	7.60														
60	6.18	6.16	6.16	6.30	6.42														
65	4.95	4.92	4.92	5.07	5.20														
70	3.68	3.66	3.64	3.80	3.93														
75	2.44	2.41	2.40	2.54	2.67														
80	1.31	1.28	1.26	1.37	1.48														
85	0.49	0.47	0.43	0.47	0.51														
90	0.13	0.13	0.11	0.12	0.11														
95	0.09	0.09	0.09	0.10	0.07														
100	0.09	0.09	0.07	0.08	0.07														
105	0.08	0.08	0.07	0.08	0.07														
110	0.08	0.08	0.08	0.08	0.07														
115	0.08	0.09	0.08	0.08	0.07														
120	0.09	0.09	0.08	0.09	0.08														
125	0.09	0.10	0.09	0.09	0.08														
130	0.10	0.10	0.09	0.10	0.08														
135	0.11	0.11	0.10	0.10	0.09														
140	0.11	0.11	0.10	0.10	0.10														
145	0.11	0.11	0.11	0.11	0.10														
150	0.12	0.12	0.11	0.11	0.10														
155	0.12	0.12	0.11	0.11	0.11														
160	0.12	0.12	0.11	0.12	0.12														
165	0.13	0.12	0.12	0.13	0.13														
170	0.13	0.12	0.18	0.14	0.15														
175	0.13	0.13	0.17	0.17	0.17														
180	0.13	0.15	0.18	0.19	0.19														

C Range: 0 - 360DEG
 C Interval: 15.0DEG
 Test Speed: HIGH
 Temperature:25.3DEG
 Operators:Xu liping
 Test Date:2024-03-21

γ Range: 0 - 180DEG
 γ Interval: 1.0DEG
 Test System:EVERFINE GO-2000A_V1 SYSTEM V2.0.287
 Humidity:65.0%
 Test Distance:7.130m [K=1.0000]
 Remarks: