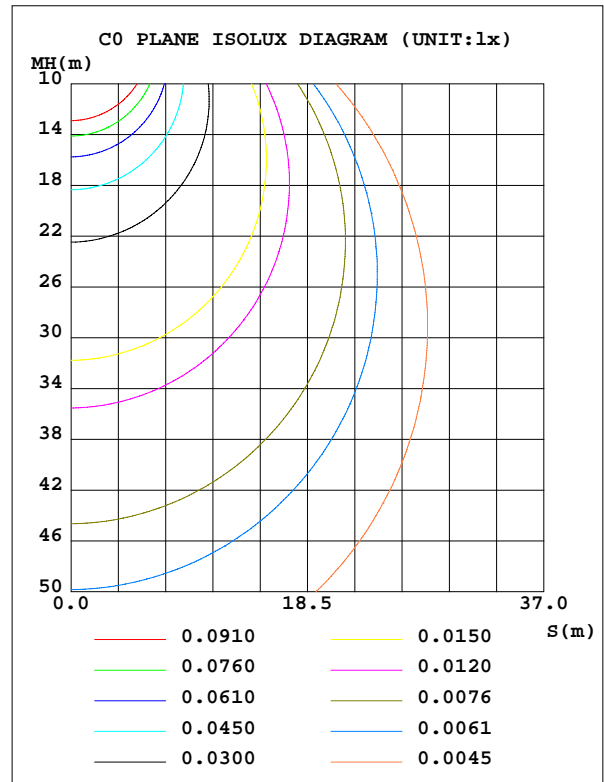
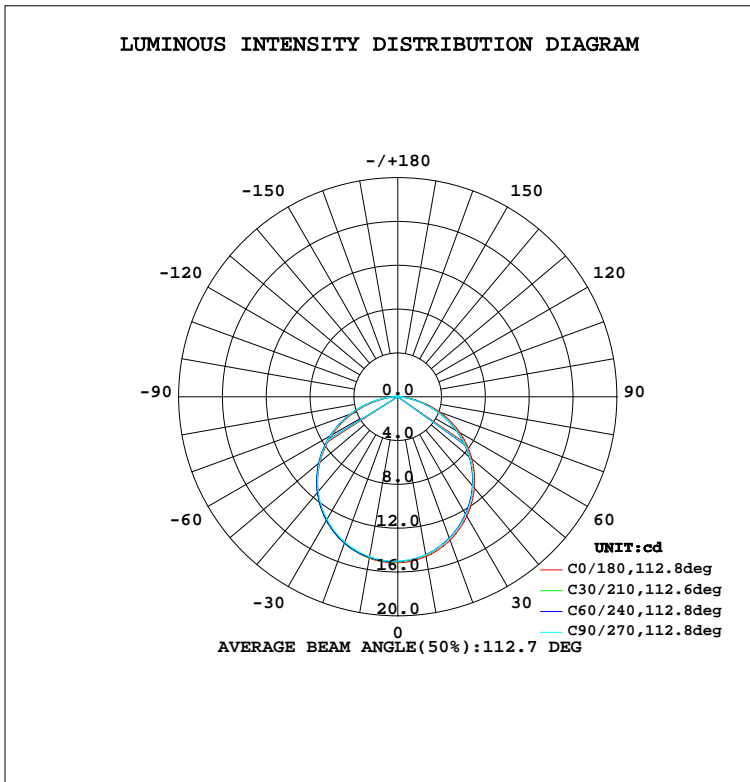


LUMINAIRE PHOTOMETRIC TEST REPORT

Test:U:24.00V I:0.4063A P:9.751W PF:1.000 Lamp Flux:43.6845x1 lm		
NAME: Neon lamp belt	TYPE:LED Neon lamp belt	WEIGHT:
SPEC.:	DIM.: 1000*16mm	SERIAL No.:1#
MFR.:	SUR.:1000*16mm	PROTECTION ANGLE:

DATA OF LAMP		PHOTOMETRIC DATA			Eff: 4.48 lm/W
MODEL RX1CC0TD-A-1-B1KL-F21-1		I _{max} (cd)	15.15	S/MH(C0/180)	1.27
NOMINAL POWER(W)	9.75	LOR(%)	100.0	S/MH(C90/270)	1.28
RATED VOLTAGE(V)	24	TOTAL FLUX(lm)	43.684	η UP, DN(C0-180)	0.6, 47.8
NOMINAL FLUX(lm)	43.6845	CIE CLASS	DIRECT	η UP, DN(C180-360)	0.8, 50.9
LAMPS INSIDE	1	η up(%)	1.4	CIBSE SHR NOM	1.25
TEST VOLTAGE(V)	24	η down(%)	98.6	CIBSE SHR MAX	1.35



C Range: 0 - 360DEG
 C Interval: 15.0DEG
 Test Speed: HIGH
 Temperature:25.3DEG
 Operators:Xu liping
 Test Date:2024-03-21

γ Range: 0 - 180DEG
 γ Interval: 1.0DEG
 Test System:EVERFINE GO-2000A_V1 SYSTEM V2.0.2007
 Humidity:65.0%
 Test Distance:7.130m [K=1.0000]
 Remarks:



ZONAL FLUX DIAGRAM

ZONAL FLUX DIAGRAM:

γ	C0	C45	C90	C135	C180	C225	C270	C315	γ	Φ zone	Φ total	\$lum,lamp
10	14.81	14.66	14.65	14.72	14.96	14.91	14.82	14.70	0- 10	1.422	1.422	3.25,3.25
20	13.94	13.76	13.77	13.94	14.23	14.23	14.12	13.91	10- 20	4.072	5.493	12.6,12.6
30	12.59	12.40	12.43	12.66	13.00	13.04	12.92	12.65	20- 30	6.169	11.66	26.7,26.7
40	10.87	10.64	10.66	10.97	11.32	11.41	11.31	10.99	30- 40	7.445	19.11	43.7,43.7
50	8.833	8.571	8.589	8.911	9.267	9.416	9.340	9.015	40- 50	7.737	26.84	61.5,61.5
60	6.541	6.224	6.234	6.544	6.904	7.097	7.072	6.761	50- 60	7.012	33.86	77.5,77.5
70	4.054	3.724	3.683	3.968	4.320	4.551	4.587	4.308	60- 70	5.355	39.21	89.8,89.8
80	1.588	1.334	1.282	1.482	1.737	1.986	2.075	1.861	70- 80	3.032	42.24	96.7,96.7
90	0.0312	0.1117	0.1121	0.1649	0.1777	0.2699	0.3217	0.2241	80- 90	0.8368	43.08	98.6,98.6
100	0.0305	0.0711	0.0534	0.1168	0.0305	0.1346	0.0787	0.0864	90-100	0.1175	43.20	98.9,98.9
110	0.0483	0.0711	0.0635	0.1016	0.0458	0.1328	0.0914	0.0939	100-110	0.0904	43.29	99.1,99.1
120	0.0660	0.0762	0.0736	0.0889	0.0584	0.1244	0.1016	0.0889	110-120	0.0844	43.37	99.3,99.3
130	0.0813	0.0863	0.0788	0.0813	0.0686	0.1067	0.1067	0.1016	120-130	0.0785	43.45	99.5,99.5
140	0.0965	0.0940	0.0965	0.0914	0.0864	0.1067	0.1096	0.1092	130-140	0.0722	43.52	99.6,99.6
150	0.1117	0.1017	0.1041	0.0966	0.0991	0.1067	0.1118	0.1194	140-150	0.0639	43.59	99.8,99.8
160	0.1169	0.1143	0.1117	0.1042	0.1169	0.1244	0.1209	0.1245	150-160	0.0515	43.64	99.9,99.9
170	0.1320	0.1244	0.1183	0.1194	0.1247	0.1240	0.1245	0.1310	160-170	0.0338	43.67	100,100
180	0.1321	0.1296	0.1296	0.1296	0.1372	0.1270	0.1270	0.1270	170-180	0.0120	43.68	100,100
DEG	LUMINOUS INTENSITY:cd									UNIT:lm		

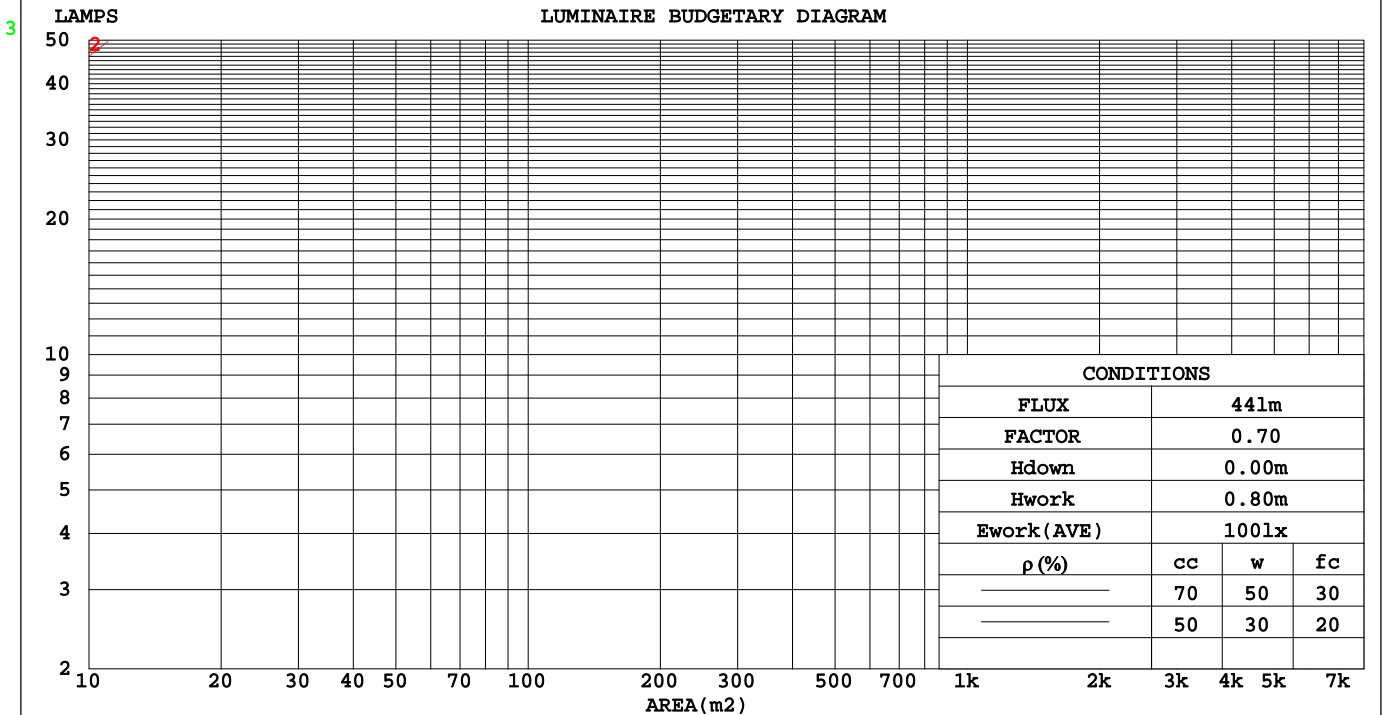
C Range: 0 - 360DEG
 C Interval: 15.0DEG
 Test Speed: HIGH
 Temperature:25.3DEG
 Operators:Xu liping
 Test Date:2024-03-21

γ Range: 0 - 180DEG
 γ Interval: 1.0DEG
 Test System:EVERFINE GO-2000A_V1 SYSTEM V2.0.287
 Humidity:65.0%
 Test Distance:7.130m [K=1.0000]
 Remarks:

CU AND LUMINAIRE BUDGETARY ESTIMATE DIAGRAM

Test:U:24.00V I:0.4063A P:9.751W PF:1.000 Lamp Flux:43.6845x1 lm		
NAME: Neon lamp belt	TYPE:LED Neon lamp belt	WEIGHT:
SPEC.:	DIM.: 1000*16mm	SERIAL No.:1#
MFR.:	SUR.:1000*16mm	PROTECTION ANGLE:

ρcc	80%			70%			50%			30%			10%			0
ρw	50%	30%	10%	50%	30%	10%	50%	30%	10%	50%	30%	10%	50%	30%	10%	0
ρfc	20%			20%			20%			20%			20%			0
RCR	RCR:Room Cavity Ratio						Coefficients of Utilization(CU)									
0.0	1.19	1.19	1.19	1.16	1.16	1.16	1.10	1.10	1.10	1.05	1.05	1.05	1.01	1.01	1.01	.99
1.0	1.04	.99	.95	1.01	.97	.94	.97	.93	.90	.92	.90	.87	.89	.87	.85	.82
2.0	.90	.83	.77	.88	.82	.76	.84	.79	.74	.81	.76	.72	.78	.74	.71	.68
3.0	.79	.71	.64	.77	.70	.64	.74	.68	.62	.71	.66	.61	.68	.64	.60	.58
4.0	.70	.61	.54	.69	.60	.54	.66	.59	.53	.63	.57	.52	.61	.56	.51	.49
5.0	.62	.53	.47	.61	.53	.46	.59	.51	.46	.57	.50	.45	.55	.49	.44	.42
6.0	.56	.47	.41	.55	.47	.40	.53	.46	.40	.51	.45	.40	.50	.44	.39	.37
7.0	.51	.42	.36	.50	.42	.36	.48	.41	.35	.47	.40	.35	.45	.39	.35	.33
8.0	.46	.38	.32	.46	.38	.32	.44	.37	.32	.43	.36	.31	.42	.36	.31	.29
9.0	.43	.34	.29	.42	.34	.29	.41	.33	.28	.39	.33	.28	.38	.32	.28	.26
10.0	.39	.31	.26	.39	.31	.26	.38	.31	.26	.37	.30	.26	.36	.30	.25	.24



C Range: 0 - 360DEG
 C Interval: 15.0DEG
 Test Speed: HIGH
 Temperature:25.3DEG
 Operators:Xu liping
 Test Date:2024-03-21

γ Range: 0 - 180DEG
 γ Interval: 1.0DEG
 Test System:EVERFINE GO-2000A_V1 SYSTEM V2.0.287
 Humidity:65.0%
 Test Distance:7.130m [K=1.0000]
 Remarks:

WEC AND CCEC

Test:U:24.00V I:0.4063A P:9.751W PF:1.000 Lamp Flux:43.6845x1 lm								
NAME: Neon lamp belt			TYPE:LED Neon lamp belt			WEIGHT:		
SPEC.:			DIM.: 1000*16mm			SERIAL No.:1#		
MFR.:			SUR.:1000*16mm			PROTECTION ANGLE:		

ρ_{cc}	80%			70%			50%			30%			10%			0
ρ_w	50%	30%	10%	50%	30%	10%	50%	30%	10%	50%	30%	10%	50%	30%	10%	0
ρ_{fc}	20%			20%			20%			20%			20%			0
RCR	RCR:Room Cavity Ratio						Wall Exitance Coefficients(WEC)									
0.0																
1.0	.310	.176	.056	.303	.173	.055	.289	.166	.053	.276	.159	.051	.264	.153	.049	
2.0	.292	.160	.049	.285	.157	.048	.273	.152	.047	.261	.147	.046	.251	.142	.045	
3.0	.270	.144	.043	.264	.141	.043	.253	.137	.042	.243	.133	.041	.233	.129	.040	
4.0	.249	.129	.038	.244	.128	.038	.234	.124	.037	.225	.121	.036	.217	.118	.036	
5.0	.230	.117	.034	.226	.116	.034	.217	.113	.033	.209	.110	.033	.201	.108	.032	
6.0	.214	.107	.031	.209	.106	.030	.202	.103	.030	.194	.101	.030	.187	.099	.029	
7.0	.199	.098	.028	.195	.097	.028	.188	.095	.027	.181	.093	.027	.175	.091	.027	
8.0	.186	.091	.025	.182	.090	.025	.176	.088	.025	.170	.086	.025	.165	.084	.025	
9.0	.174	.084	.023	.171	.083	.023	.165	.082	.023	.160	.080	.023	.155	.079	.023	
10.0	.163	.078	.022	.161	.078	.022	.156	.076	.021	.151	.075	.021	.146	.074	.021	

ρ_{cc}	80%			70%			50%			30%			10%			0
ρ_w	50%	30%	10%	50%	30%	10%	50%	30%	10%	50%	30%	10%	50%	30%	10%	0
ρ_{fc}	20%			20%			20%			20%			20%			0
RCR	RCR:Room Cavity Ratio						Ceiling Cavity Exitance Coefficients(CCEC)									
0.0	.201	.201	.201	.172	.172	.172	.117	.117	.117	.067	.067	.067	.022	.022	.022	
1.0	.191	.167	.145	.163	.143	.125	.112	.098	.086	.064	.057	.050	.021	.018	.016	
2.0	.183	.143	.109	.157	.123	.094	.107	.085	.066	.062	.049	.038	.020	.016	.013	
3.0	.175	.125	.085	.150	.108	.074	.103	.075	.052	.060	.044	.030	.019	.014	.010	
4.0	.168	.112	.069	.144	.097	.060	.099	.067	.042	.057	.039	.025	.018	.013	.008	
5.0	.160	.101	.058	.138	.088	.050	.095	.061	.036	.055	.036	.021	.018	.012	.007	
6.0	.153	.093	.050	.132	.081	.044	.091	.056	.031	.053	.033	.018	.017	.011	.006	
7.0	.146	.086	.044	.126	.075	.038	.087	.052	.027	.051	.031	.016	.016	.010	.005	
8.0	.140	.080	.040	.120	.070	.035	.083	.049	.025	.048	.029	.015	.016	.009	.005	
9.0	.134	.075	.036	.115	.066	.032	.080	.046	.022	.047	.027	.013	.015	.009	.004	
10.0	.128	.071	.033	.110	.062	.029	.077	.044	.021	.045	.026	.012	.014	.008	.004	

C Range: 0 - 360DEG
 C Interval: 15.0DEG
 Test Speed: HIGH
 Temperature:25.3DEG
 Operators:Xu liping
 Test Date:2024-03-21

γ Range: 0 - 180DEG
 γ Interval: 1.0DEG
 Test System:EVERFINE GO-2000A_V1 SYSTEM V2.0.287
 Humidity:65.0%
 Test Distance:7.130m [K=1.0000]
 Remarks:

UGR(Unified Glare Rating) Table

Test:U:24.00V I:0.4063A P:9.751W PF:1.000 Lamp Flux:43.6845x1 lm										
NAME: Neon lamp belt				TYPE:LED Neon lamp belt				WEIGHT:		
SPEC.:				DIM.: 1000*16mm				SERIAL No.:1#		
MFR.:				SUR.:1000*16mm				PROTECTION ANGLE:		
ceiling/cavity	0.7	0.7	0.5	0.5	0.3	0.7	0.7	0.5	0.5	0.3
walls	0.5	0.3	0.5	0.3	0.3	0.5	0.3	0.5	0.3	0.3
working plane	0.2	0.2	0.2	0.2	0.2	0.2	0.2	0.2	0.2	0.2
Room dimensions	Viewed crosswise					Viewed endwise				
x = 2H y = 2H	12.0	13.5	12.3	13.7	14.0	11.9	13.4	12.1	13.6	13.8
3H	13.5	14.9	13.8	15.2	15.4	13.2	14.6	13.6	14.9	15.2
4H	14.1	15.4	14.4	15.7	16.0	13.7	15.1	14.1	15.3	15.6
6H	14.5	15.7	14.8	16.0	16.3	14.0	15.3	14.4	15.6	15.9
8H	14.6	15.8	14.9	16.1	16.4	14.1	15.3	14.4	15.6	15.9
12H	14.6	15.8	15.0	16.1	16.4	14.1	15.2	14.5	15.6	15.9
4H 2H	12.6	13.9	12.9	14.2	14.4	12.4	13.8	12.8	14.0	14.3
3H	14.2	15.4	14.6	15.7	16.0	14.0	15.1	14.4	15.5	15.8
4H	14.9	16.0	15.3	16.3	16.7	14.6	15.6	15.0	16.0	16.3
6H	15.4	16.3	15.8	16.7	17.1	15.0	15.9	15.4	16.3	16.7
8H	15.5	16.4	16.0	16.8	17.2	15.1	15.9	15.5	16.3	16.7
12H	15.6	16.4	16.1	16.8	17.3	15.1	15.9	15.6	16.3	16.8
8H 4H	15.1	16.0	15.5	16.4	16.8	14.8	15.7	15.2	16.1	16.5
6H	15.7	16.4	16.2	16.8	17.3	15.3	16.0	15.8	16.5	16.9
8H	15.9	16.5	16.4	17.0	17.5	15.4	16.1	15.9	16.5	17.0
12H	16.0	16.6	16.5	17.0	17.5	15.5	16.1	16.0	16.6	17.1
12H 4H	15.1	15.9	15.5	16.3	16.7	14.8	15.6	15.2	16.0	16.4
6H	15.7	16.3	16.2	16.8	17.3	15.3	16.0	15.8	16.4	16.9
8H	15.9	16.5	16.4	17.0	17.5	15.5	16.1	16.0	16.5	17.0
Variations with the observer position at spacings:										
S = 1.0H	+ 0.2 / - 0.2					+ 0.2 / - 0.2				
1.5H	+ 0.2 / - 0.3					+ 0.2 / - 0.3				
2.0H	+ 0.2 / - 0.3					+ 0.2 / - 0.3				

CIE Pub.117 Corrected 43.68 lm Total Lamp Luminous Flux.(8log(F/F0) = -10.9)

C Range: 0 - 360DEG
 C Interval: 15.0DEG
 Test Speed: HIGH
 Temperature:25.3DEG
 Operators:Xu liping
 Test Date:2024-03-21

γ Range: 0 - 180DEG
 γ Interval: 1.0DEG
 Test System:EVERFINE GO-2000A_V1 SYSTEM V2.0.287
 Humidity:65.0%
 Test Distance:7.130m [K=1.0000]
 Remarks:

UTILIZATION FACTORS TABLE

Test:U:24.00V I:0.4063A P:9.751W PF:1.000 Lamp Flux:43.6845x1 lm		
NAME: Neon lamp belt	TYPE:LED Neon lamp belt	WEIGHT:
SPEC.:	DIM.: 1000*16mm	SERIAL No.:1#
MFR.:	SUR.:1000*16mm	PROTECTION ANGLE:

REFLECTANCE										
Ceiling	0.8	0.8	0.8	0.7	0.7	0.7	0.5	0.5	0.5	0
Walls	0.7	0.5	0.3	0.7	0.5	0.3	0.7	0.5	0.3	0
Working plane	0.2	0.2	0.2	0.2	0.2	0.2	0.2	0.2	0.2	0
ROOM INDEX	UTILIZATION FACTORS(PERCENT) $k(RI) \times RCR = 5$									
k = 0.60	57	45	38	56	45	38	55	45	38	32
0.80	67	55	48	66	55	48	64	54	47	40
1.00	75	64	57	74	64	57	72	65	56	49
1.25	83	72	65	81	71	64	78	70	63	56
1.50	88	78	70	86	77	70	83	75	69	61
2.00	94	86	79	92	84	78	89	82	77	69
2.50	98	90	84	96	89	83	92	86	81	73
3.00	102	95	89	99	93	88	95	90	86	77
4.00	106	100	95	103	98	94	99	95	91	82
5.00	108	103	99	106	101	98	101	97	94	85
ROOM INDEX	UF(total)									Direct
According to DIN EN 13032-2 2004			Suspended				SHRNOM = 1.25			

C Range: 0 - 360DEG
 C Interval: 15.0DEG
 Test Speed: HIGH
 Temperature:25.3DEG
 Operators:Xu liping
 Test Date:2024-03-21

γ Range: 0 - 180DEG
 γ Interval: 1.0DEG
 Test System:EVERFINE GO-2000A_V1 SYSTEM V2.0.287
 Humidity:65.0%
 Test Distance:7.130m [K=1.0000]
 Remarks:

ISOCANDELA DIAGRAM

Test:U:24.00V I:0.4063A P:9.751W PF:1.000 Lamp Flux:43.6845x1 lm		
NAME: Neon lamp belt	TYPE:LED Neon lamp belt	WEIGHT:
SPEC.:	DIM.: 1000*16mm	SERIAL No.:1#
MFR.:	SUR.:1000*16mm	PROTECTION ANGLE:

Conical surface Flux(90deg):

23.003 lm

%lum = 52.7%

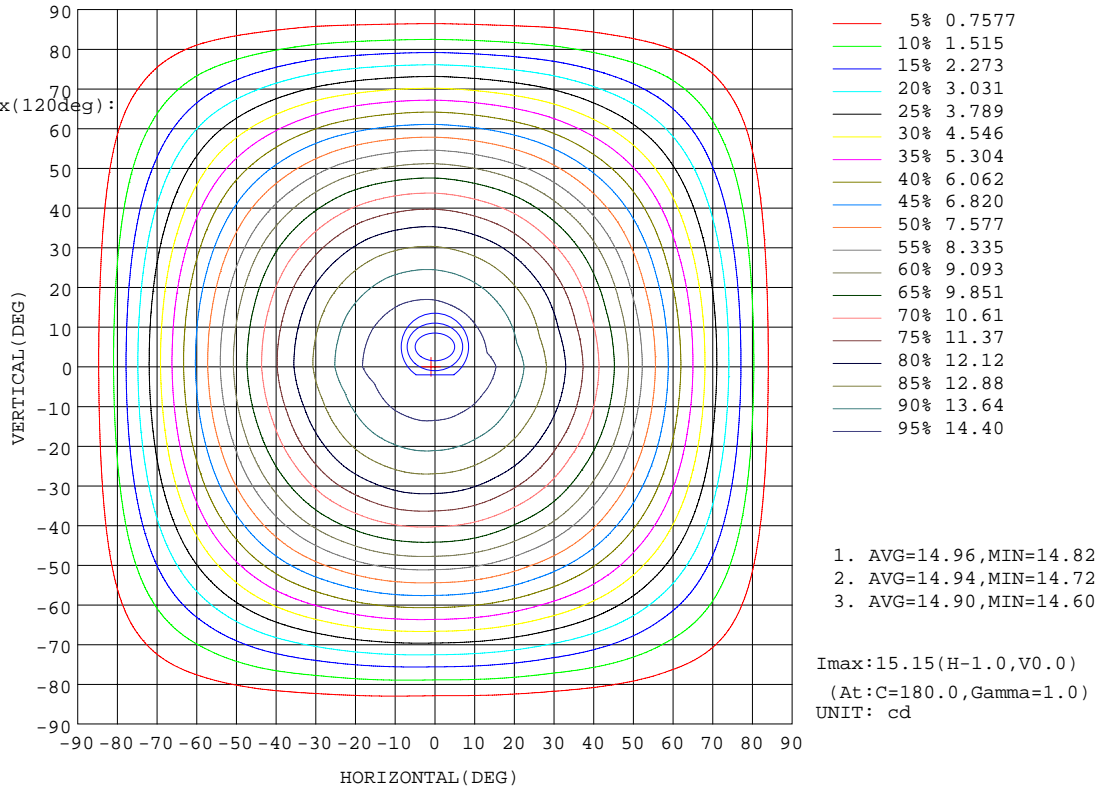
%lamp = 52.7%

Conical surface Flux(120deg):

33.856 lm

%lum = 77.5%

%lamp = 77.5%

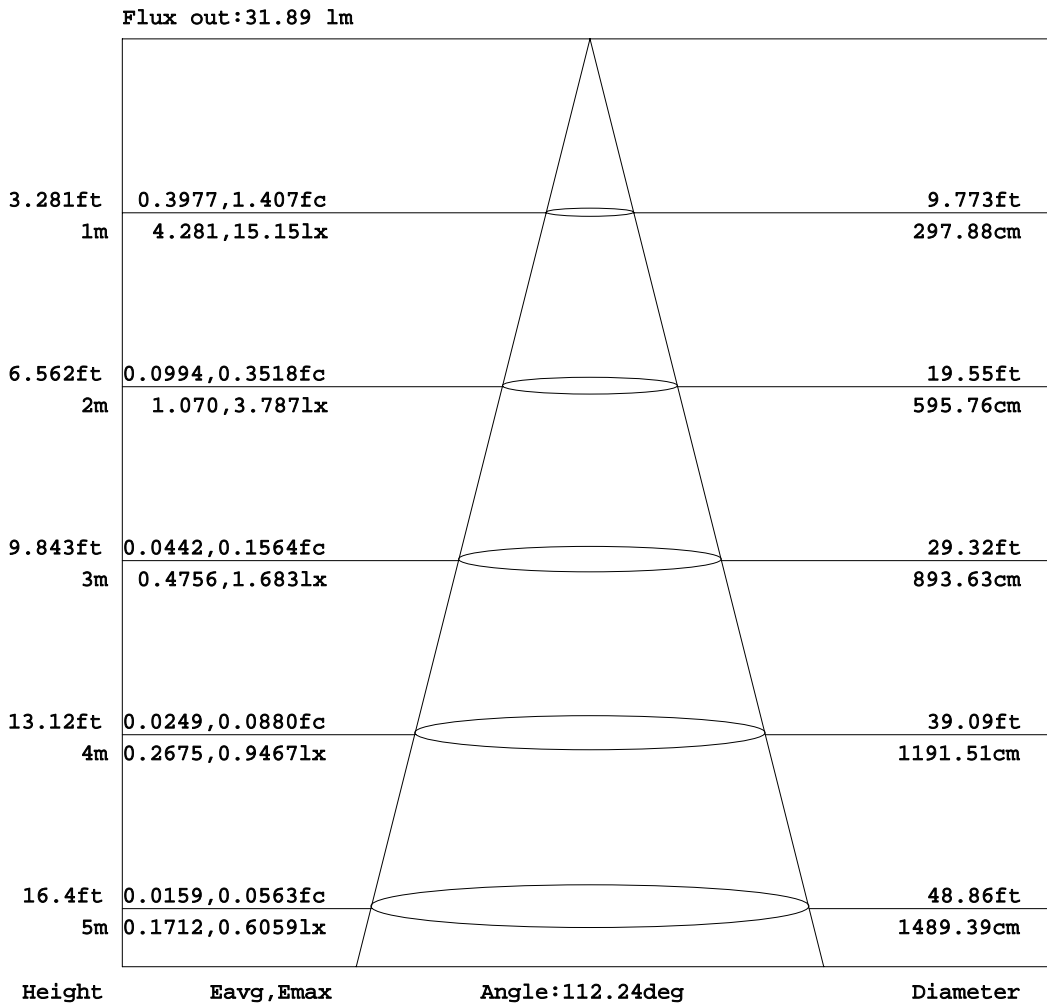


C Range: 0 - 360DEG
 C Interval: 15.0DEG
 Test Speed: HIGH
 Temperature:25.3DEG
 Operators:Xu liping
 Test Date:2024-03-21

γ Range: 0 - 180DEG
 γ Interval: 1.0DEG
 Test System:EVERFINE GO-2000A_V1 SYSTEM V2.0.287
 Humidity:65.0%
 Test Distance:7.130m [K=1.0000]
 Remarks:

AAI Figure

Test:U:24.00V I:0.4063A P:9.751W PF:1.000 Lamp Flux:43.6845x1 lm		
NAME: Neon lamp belt	TYPE:LED Neon lamp belt	WEIGHT:
SPEC.:	DIM.: 1000*16mm	SERIAL No.:1#
MFR.:	SUR.:1000*16mm	PROTECTION ANGLE:



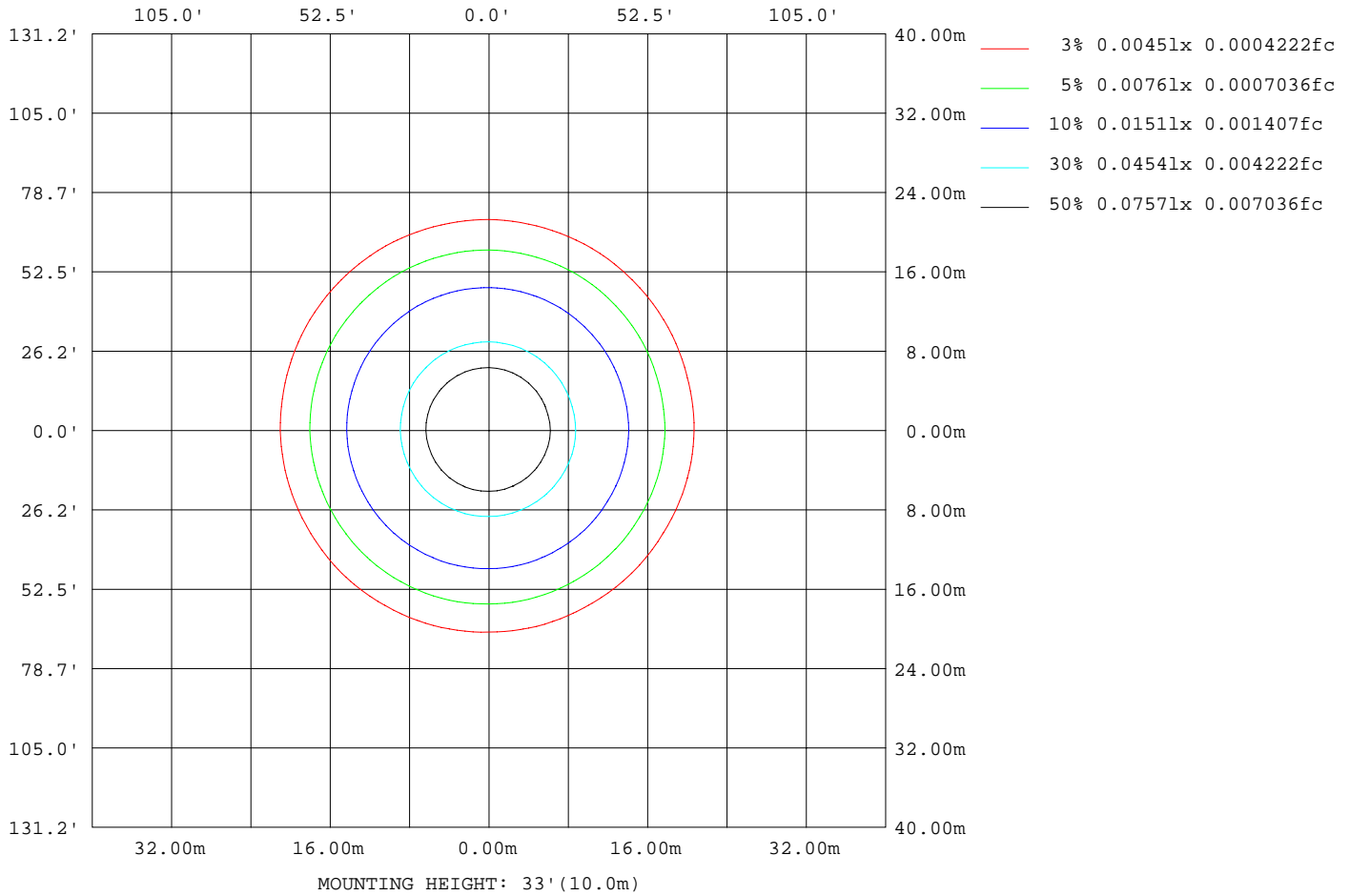
Note:The Curves indicate the illuminated area and the average illumination when the luminaire is at different distance.

C Range: 0 - 360DEG
 C Interval: 15.0DEG
 Test Speed: HIGH
 Temperature:25.3DEG
 Operators:Xu liping
 Test Date:2024-03-21

γ Range: 0 - 180DEG
 γ Interval: 1.0DEG
 Test System:EVERFINE GO-2000A_V1 SYSTEM V2.0.287
 Humidity:65.0%
 Test Distance:7.130m [K=1.0000]
 Remarks:

ISOLUX DIAGRAM

Test:U:24.00V I:0.4063A P:9.751W PF:1.000 Lamp Flux:43.6845x1 lm		
NAME: Neon lamp belt	TYPE:LED Neon lamp belt	WEIGHT:
SPEC.:	DIM.: 1000*16mm	SERIAL No.:1#
MFR.:	SUR.:1000*16mm	PROTECTION ANGLE:



C Range: 0 - 360DEG
 C Interval: 15.0DEG
 Test Speed: HIGH
 Temperature:25.3DEG
 Operators:Xu liping
 Test Date:2024-03-21

γ Range: 0 - 180DEG
 γ Interval: 1.0DEG
 Test System:EVERFINE GO-2000A_V1 SYSTEM V2.0.287
 Humidity:65.0%
 Test Distance:7.130m [K=1.0000]
 Remarks:

Average Luminance Table(CIBSE)

Test:U:24.00V I:0.4063A P:9.751W PF:1.000 Lamp Flux:43.6845x1 lm		
NAME: Neon lamp belt	TYPE:LED Neon lamp belt	WEIGHT:
SPEC.:	DIM.: 1000*16mm	SERIAL No.:1#
MFR.:	SUR.:1000*16mm	PROTECTION ANGLE:

Parameter description for average Luminance	Symbol	Value	Unit
Luminance in Azimuth Plane	Bc	refer Table 2	cd/sq.m.
Intensity at angle Gamma in given azimuth plane	I	from data	cd/klm
Number of lamps	N	1	
Output of each lamp(initial lumens as specified)	F	43.6845	lm
Multiplying factor	K	1	
Luminous area in horizontal plane used in calculations	A	0.016	sq.m.
Angle to the downward vertical from light centre	Gamma	from data	deg

Table 1. Calculation parameters for determination of CIBSE LG3:1996 Average Luminance

G deg	C plane(deg)																		
	0	10	20	30	40	50	60	70	80	90	100	110	120	130	140	150	160	170	180
55	839	834	832	832	834	837	840	844	849	853	858	863	868	872	875	877	878	881	884
60	818	811	808	809	810	813	817	822	826	832	837	842	847	851	854	856	856	859	863
65	785	780	777	776	778	781	784	789	794	799	805	811	816	820	823	824	826	829	832
70	741	734	731	732	733	736	740	744	749	756	761	767	774	777	780	783	781	784	789
75	673	667	664	664	666	670	675	679	685	691	697	703	709	712	714	715	713	715	721
80	571	568	566	568	572	578	585	592	598	604	610	616	621	624	623	620	617	620	625
85	411	415	425	439	456	475	495	506	517	528	531	534	538	532	522	510	490	489	503

Table 2. Average Luminance(cd/sq.m.) for defined C plane,Gamma angle

CIBSE Category	Gamma (deg)	Average Luminance		Patch Luminance	
		maximum calculated	specified maximum	maximum measured	specified maximum
		Category 1	55 to 90	884	200
Category 2	65 to 90	832	200	---	500
Category 3	75 to 90	721	200	---	500

Table 3. Tabulation of Average and Patch Luminance(cd/sq.m.) for defined CIBSE categories

No match

C Range: 0 - 360DEG
 C Interval: 15.0DEG
 Test Speed: HIGH
 Temperature:25.3DEG
 Operators:Xu liping
 Test Date:2024-03-21

γ Range: 0 - 180DEG
 γ Interval: 1.0DEG
 Test System:EVERFINE GO-2000A_V1 SYSTEM V2.0.287
 Humidity:65.0%
 Test Distance:7.130m [K=1.0000]
 Remarks:

Average Luminance Table(CIBSE)

Test:U:24.00V I:0.4063A P:9.751W PF:1.000 Lamp Flux:43.6845x1 lm		
NAME: Neon lamp belt	TYPE:LED Neon lamp belt	WEIGHT:
SPEC.:	DIM.: 1000*16mm	SERIAL No.:1#
MFR.:	SUR.:1000*16mm	PROTECTION ANGLE:

Parameter description for average Luminance	Symbol	Value	Unit
Luminance in Azimuth Plane	Bc	refer Table 2	cd/sq.m.
Intensity at angle Gamma in given azimuth plane	I	from data	cd/klm
Number of lamps	N	1	
Output of each lamp(initial lumens as specified)	F	43.6845	lm
Multiplying factor	K	1	
Luminous area in horizontal plane used in calculations	A	0.016	sq.m.
Angle to the downward vertical from light centre	Gamma	from data	deg

Table 1. Calculation parameters for determination of CIBSE LG3:2001 Average Luminance

G deg	C plane(deg)																		
	0	10	20	30	40	50	60	70	80	90	100	110	120	130	140	150	160	170	180
55	839	834	832	832	834	837	840	844	849	853	858	863	868	872	875	877	878	881	884
60	818	811	808	809	810	813	817	822	826	832	837	842	847	851	854	856	856	859	863
65	785	780	777	776	778	781	784	789	794	799	805	811	816	820	823	824	826	829	832
70	741	734	731	732	733	736	740	744	749	756	761	767	774	777	780	783	781	784	789
75	673	667	664	664	666	670	675	679	685	691	697	703	709	712	714	715	713	715	721
80	571	568	566	568	572	578	585	592	598	604	610	616	621	624	623	620	617	620	625
85	411	415	425	439	456	475	495	506	517	528	531	534	538	532	522	510	490	489	503

Table 2. Average Luminance(cd/sq.m.) for defined C plane,Gamma angle

range (deg)	Maximum measured	Average Luminance(cd/sq.m)			
		Maximum limit for screen type & software category used			
		Type I,II screen Some neg.s'ware	Type I,II screen Only pos.s'ware	Type III screen Some neg.s'ware	Type III screen Only pos.s'ware
55 to 90	884	1000	1500	200	500
65 to 90	832	1000	1500	200	500

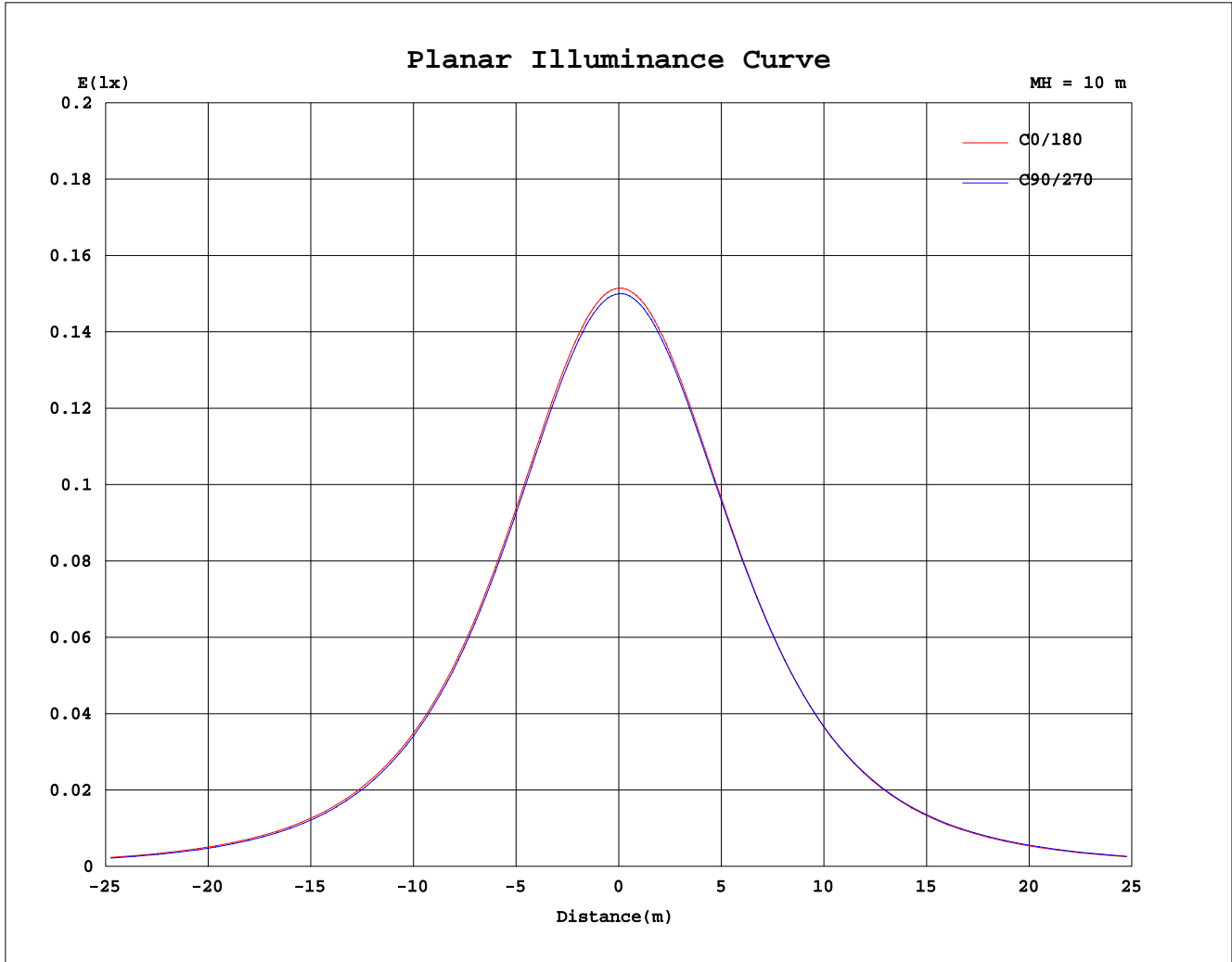
Table 3. Tabulation of average luminance(cd/sq.m.) and luminance limits

The luminaire satisfies the specified luminance criteria for
Negative Software with Type I & II Screen(Good to Moderate treatment).

C Range: 0 - 360DEG
C Interval: 15.0DEG
Test Speed: HIGH
Temperature:25.3DEG
Operators:Xu liping
Test Date:2024-03-21

γ Range: 0 - 180DEG
γ Interval: 1.0DEG
Test System:EVERFINE GO-2000A_V1 SYSTEM V2.0.287
Humidity:65.0%
Test Distance:7.130m [K=1.0000]
Remarks:

Planar Illuminance Curve



C Range: 0 - 360DEG
 C Interval: 15.0DEG
 Test Speed: HIGH
 Temperature: 25.3DEG
 Operators: Xu liping
 Test Date: 2024-03-21

γ Range: 0 - 180DEG
 γ Interval: 1.0DEG
 Test System: EVERFINE GO-2000A_V1 SYSTEM V2.0.287
 Humidity: 65.0%
 Test Distance: 7.130m [K=1.0000]
 Remarks:

LUMINOUS DISTRIBUTION INTENSITY DATA

Test:U:24.00V I:0.4063A P:9.751W PF:1.000 Lamp Flux:43.6845x1 lm		
NAME: Neon lamp belt	TYPE:LED Neon lamp belt	WEIGHT:
SPEC.:	DIM.: 1000*16mm	SERIAL No.:1#
MFR.:	SUR.:1000*16mm	PROTECTION ANGLE:

Table--1

UNIT: cd

C(DEG) γ (DEG)	0	15	30	45	60	75	90	105	120	135	150	165	180	195	210	225	240	255	270
0	15.1	15.1	15.1	15.1	15.0	15.0	15.0	15.0	15.0	15.0	15.0	15.0	15.1	15.1	15.1	15.1	15.0	15.0	15.0
5	15.0	15.0	14.9	14.9	14.9	14.9	14.9	14.9	14.9	14.9	14.9	14.9	15.1	15.1	15.1	15.0	15.0	15.0	15.0
10	14.8	14.7	14.7	14.7	14.6	14.6	14.6	14.7	14.7	14.7	14.7	14.8	15.0	14.9	14.9	14.9	14.9	14.9	14.8
15	14.4	14.4	14.3	14.3	14.2	14.3	14.3	14.3	14.3	14.4	14.4	14.5	14.7	14.6	14.7	14.6	14.6	14.6	14.5
20	13.9	13.9	13.8	13.8	13.7	13.8	13.8	13.8	13.9	13.9	14.0	14.0	14.2	14.2	14.2	14.2	14.2	14.2	14.1
25	13.3	13.2	13.1	13.1	13.1	13.1	13.2	13.2	13.3	13.4	13.4	13.5	13.7	13.7	13.7	13.7	13.7	13.6	13.6
30	12.6	12.5	12.4	12.4	12.4	12.4	12.4	12.5	12.6	12.7	12.7	12.8	13.0	13.0	13.1	13.0	13.0	13.0	12.9
35	11.8	11.7	11.6	11.6	11.5	11.6	11.6	11.7	11.8	11.9	11.9	12.0	12.2	12.2	12.3	12.3	12.3	12.2	12.2
40	10.9	10.8	10.7	10.6	10.6	10.6	10.7	10.8	10.8	11.0	11.0	11.1	11.3	11.4	11.4	11.4	11.4	11.4	11.3
45	9.90	9.80	9.67	9.64	9.60	9.65	9.68	9.78	9.86	9.98	10.0	10.1	10.3	10.4	10.5	10.4	10.5	10.4	10.4
50	8.83	8.73	8.59	8.57	8.51	8.56	8.59	8.70	8.78	8.91	8.98	9.10	9.27	9.32	9.40	9.42	9.43	9.38	9.34
55	7.70	7.59	7.46	7.42	7.37	7.42	7.43	7.54	7.62	7.75	7.83	7.95	8.12	8.17	8.27	8.28	8.32	8.26	8.23
60	6.54	6.41	6.27	6.22	6.18	6.21	6.23	6.33	6.41	6.54	6.61	6.74	6.90	6.96	7.08	7.10	7.14	7.09	7.07
65	5.31	5.19	5.04	4.99	4.92	4.95	4.96	5.07	5.13	5.27	5.34	5.49	5.62	5.70	5.81	5.84	5.90	5.86	5.84
70	4.05	3.93	3.78	3.72	3.66	3.67	3.68	3.77	3.85	3.97	4.06	4.18	4.32	4.37	4.51	4.55	4.62	4.59	4.59
75	2.79	2.67	2.53	2.47	2.41	2.42	2.42	2.49	2.55	2.66	2.74	2.86	2.98	3.04	3.19	3.24	3.32	3.30	3.31
80	1.59	1.50	1.38	1.33	1.28	1.29	1.28	1.34	1.38	1.48	1.52	1.63	1.74	1.80	1.93	1.99	2.07	2.06	2.08
85	0.57	0.53	0.47	0.47	0.45	0.47	0.46	0.50	0.51	0.57	0.57	0.62	0.70	0.73	0.85	0.90	0.99	0.98	1.01
90	0.03	0.11	0.11	0.11	0.11	0.12	0.11	0.13	0.15	0.16	0.16	0.19	0.19	0.18	0.21	0.24	0.27	0.31	0.32
95	0.03	0.07	0.08	0.08	0.07	0.06	0.06	0.07	0.09	0.12	0.15	0.15	0.04	0.17	0.16	0.15	0.12	0.10	0.09
100	0.03	0.06	0.07	0.07	0.07	0.06	0.05	0.06	0.09	0.12	0.14	0.11	0.03	0.16	0.15	0.13	0.11	0.09	0.08
105	0.04	0.06	0.07	0.07	0.07	0.06	0.06	0.06	0.09	0.11	0.13	0.07	0.04	0.14	0.15	0.14	0.11	0.09	0.08
110	0.05	0.06	0.07	0.07	0.07	0.06	0.06	0.07	0.08	0.10	0.10	0.06	0.05	0.13	0.15	0.13	0.12	0.10	0.09
115	0.06	0.06	0.07	0.07	0.08	0.07	0.07	0.07	0.08	0.09	0.09	0.05	0.05	0.11	0.13	0.13	0.12	0.10	0.09
120	0.07	0.06	0.07	0.08	0.08	0.07	0.07	0.08	0.08	0.09	0.07	0.05	0.06	0.10	0.12	0.12	0.12	0.10	0.10
125	0.08	0.07	0.07	0.08	0.08	0.08	0.08	0.08	0.08	0.08	0.08	0.06	0.06	0.09	0.11	0.11	0.11	0.11	0.10
130	0.08	0.08	0.08	0.09	0.09	0.09	0.08	0.08	0.08	0.08	0.08	0.06	0.07	0.09	0.11	0.11	0.11	0.11	0.11
135	0.09	0.08	0.08	0.09	0.10	0.09	0.09	0.09	0.08	0.09	0.08	0.07	0.08	0.09	0.10	0.11	0.10	0.10	0.10
140	0.10	0.09	0.09	0.09	0.10	0.10	0.10	0.09	0.09	0.09	0.09	0.08	0.09	0.10	0.10	0.11	0.10	0.10	0.11
145	0.10	0.10	0.10	0.10	0.10	0.10	0.10	0.10	0.09	0.09	0.09	0.09	0.09	0.10	0.10	0.10	0.11	0.10	0.11
150	0.11	0.11	0.10	0.10	0.11	0.11	0.10	0.10	0.10	0.10	0.10	0.09	0.10	0.11	0.11	0.11	0.11	0.10	0.11
155	0.11	0.11	0.11	0.11	0.11	0.11	0.11	0.10	0.10	0.10	0.10	0.10	0.11	0.11	0.11	0.11	0.11	0.11	0.12
160	0.12	0.12	0.12	0.11	0.12	0.11	0.11	0.11	0.11	0.10	0.11	0.11	0.12	0.12	0.12	0.12	0.11	0.12	0.12
165	0.12	0.12	0.12	0.12	0.12	0.12	0.12	0.11	0.11	0.11	0.11	0.12	0.12	0.12	0.12	0.12	0.12	0.12	0.12
170	0.13	0.13	0.12	0.12	0.12	0.12	0.12	0.11	0.12	0.12	0.12	0.12	0.12	0.13	0.12	0.12	0.13	0.12	0.12
175	0.13	0.13	0.13	0.12	0.13	0.13	0.12	0.12	0.12	0.12	0.12	0.13	0.13	0.12	0.13	0.13	0.13	0.12	0.13
180	0.13	0.13	0.13	0.13	0.13	0.13	0.13	0.13	0.13	0.13	0.13	0.13	0.14	0.13	0.13	0.13	0.13	0.13	0.13

C Range: 0 - 360DEG
 C Interval: 15.0DEG
 Test Speed: HIGH
 Temperature:25.3DEG
 Operators:Xu liping
 Test Date:2024-03-21

γ Range: 0 - 180DEG
 γ Interval: 1.0DEG
 Test System:EVERFINE GO-2000A_V1 SYSTEM V2.0.287
 Humidity:65.0%
 Test Distance:7.130m [K=1.0000]
 Remarks:

LUMINOUS DISTRIBUTION INTENSITY DATA

Test:U:24.00V I:0.4063A P:9.751W PF:1.000 Lamp Flux:43.6845x1 lm		
NAME: Neon lamp belt	TYPE:LED Neon lamp belt	WEIGHT:
SPEC.:	DIM.: 1000*16mm	SERIAL No.:1#
MFR.:	SUR.:1000*16mm	PROTECTION ANGLE:

Table--2

UNIT: cd

C(DEG) γ (DEG)	285	300	315	330	345														
0	15.0	15.0	15.0	15.0	15.0														
5	15.0	14.9	14.9	14.9	14.9														
10	14.8	14.7	14.7	14.7	14.6														
15	14.5	14.4	14.4	14.3	14.3														
20	14.0	14.0	13.9	13.9	13.8														
25	13.5	13.4	13.3	13.3	13.2														
30	12.8	12.7	12.7	12.6	12.5														
35	12.1	12.0	11.9	11.8	11.7														
40	11.2	11.1	11.0	10.9	10.8														
45	10.3	10.2	10.0	9.95	9.84														
50	9.23	9.15	9.01	8.92	8.80														
55	8.13	8.05	7.92	7.82	7.69														
60	6.97	6.90	6.76	6.67	6.53														
65	5.75	5.68	5.56	5.45	5.33														
70	4.50	4.44	4.31	4.22	4.09														
75	3.23	3.18	3.07	2.97	2.84														
80	2.01	1.97	1.86	1.78	1.65														
85	0.95	0.93	0.83	0.76	0.63														
90	0.30	0.28	0.22	0.17	0.10														
95	0.10	0.10	0.09	0.08	0.06														
100	0.08	0.09	0.09	0.08	0.06														
105	0.09	0.09	0.09	0.08	0.06														
110	0.09	0.09	0.09	0.08	0.07														
115	0.10	0.10	0.09	0.08	0.07														
120	0.10	0.10	0.09	0.08	0.08														
125	0.10	0.10	0.09	0.09	0.09														
130	0.10	0.11	0.10	0.09	0.09														
135	0.11	0.11	0.10	0.10	0.09														
140	0.11	0.11	0.11	0.11	0.10														
145	0.12	0.11	0.11	0.11	0.10														
150	0.12	0.12	0.12	0.12	0.11														
155	0.12	0.12	0.12	0.12	0.12														
160	0.12	0.13	0.12	0.12	0.12														
165	0.12	0.12	0.13	0.13	0.12														
170	0.13	0.12	0.13	0.13	0.13														
175	0.13	0.13	0.13	0.13	0.13														
180	0.13	0.13	0.13	0.13	0.13														

C Range: 0 - 360DEG
 C Interval: 15.0DEG
 Test Speed: HIGH
 Temperature:25.3DEG
 Operators: Xu liping
 Test Date:2024-03-21

γ Range: 0 - 180DEG
 γ Interval: 1.0DEG
 Test System:EVERFINE GO-2000A_V1 SYSTEM V2.0.287
 Humidity:65.0%
 Test Distance:7.130m [K=1.0000]
 Remarks: