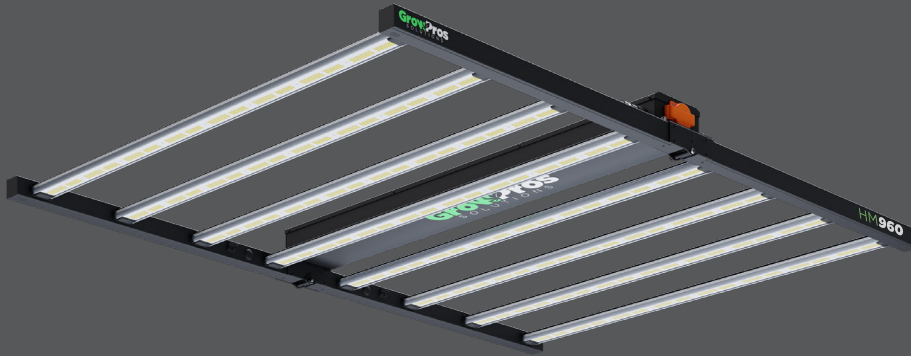


Project Name:	Type:
Note:	Date:

LED LIGHTING SOLUTION FOR COMMERCIAL INDOOR AND GREENHOUSE APPLICATIONS

HM960[®] Series

DESIGN FOR LARGE SCALE COMMERCIAL GROW HOUSE



GPS-HM-960-UNI-36R

A full-spectrum LED rack lighting solution designed for commercial indoor and greenhouse applications, enabling control over the plant cycle from the vegetative stage to the flowering stage. Indoor plants grow best under full-spectrum lights, which replicate the natural spectrum of the sun. The HM960 Series, with an increased lifespan over traditional grow light sources, cultivates healthier, happier plants.

INTENDED APPLICATIONS

- Hydroponic cannabis growing
- Indoor greenhouse



FEATURES & BENEFITS

- Compatible with TrolMaster system+Adapter LMA-14
- Total of 4500 pcs LED diodes on the fixture including deep red led diode
- Perfect grow solution for 4' x 6' grow tray
- Come with 120-277V AC output quick access outlet on the fixture
- Foldable design, easy installation
- Up to 30% more energy saving than traditional HID and HPS
- Optimized spectrum proven by growers for veg and flowering
- Superior delivered PPF and PAR exceeding 1000W HPS
- Scientifically engineered to maximize photosynthesis, growth, and yield

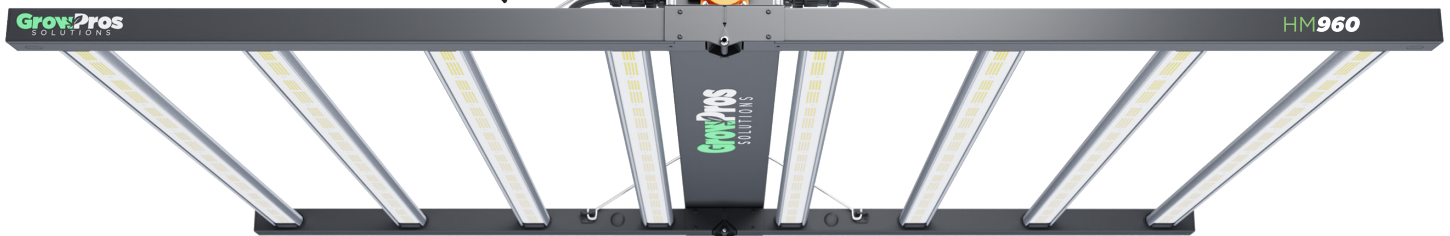


120-277V AC OUTPUT QUICK ACCESS OUTLET

Max load power 2200W at 120V
 Max load power 4300W at 240V
 Max load power 4900W at 277V

4'x6'

The perfect grow solution for 4' x 6' grow tray in the market today



DIMMER

The HM960 comes with an integral dimmer that you can adjust to 25, 50, 75, 100, and 110 percent for an extra boost of power.

CONTROL SYSTEM

Works with TrolMaster Hydro control systems. You will need to use a lighting control adapter F(LMA-14). When you put the dimmer in EXT mode, it is at 110% power, and ready to connect to the control system (If you daisy chain these lights and use a control system to control them together, you need to switch it to EXT mode).

Project Name:	Type:
Note:	Date:

LED LIGHTING SOLUTION FOR COMMERCIAL INDOOR AND GREENHOUSE APPLICATIONS

TECHNICAL SPECIFICATIONS

WATTAGE	960W
INPUT POWER	120V-277V
FREQUENCY	50/60Hz
CONTROL	0-10V dimming (0-100%)
POWER FREQUENCY	50/60 Hz
POWER FACTOR	0.9
THD	20%
THERMAL MANAGEMENT	Passive
WORKING TEMPERATURE	-40°F ~ 122°F
IP RATING	IP44, Suitable for dry & damp locations
WARRANTY	7 year limited

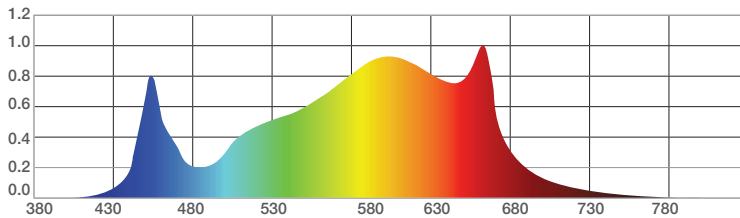
HEAT LOAD

HEAT LOAD PER FIXTURE	2148 BTU
-----------------------	-----------------

MAXIMUM POWER ELECTRICAL DATA

AC VOLTAGE	120V	208V	240V	277V
AC CURRENT	8.3A	4.66A	4.01A	3.47A
AC POWER	985W	970W	960W	960W
POWER FACTOR	0.998	0.982	0.969	0.945

SPECTRAL DISTRIBUTION



PPFD READING

12" Height @ 100% (1000W)													
	36"	30"	24"	18"	12"	6"	0"	6"	12"	18"	24"	30"	36"
24"	179	269	338				454				347	242	142
18"				719			794			747			
12"					1067		1111		1097				
6"						1259	1268	1264					
0"	424	764	1077	1211	1277	1317	1318	1307	1271	1208	1065	760	395
6"						1298	1290	1284					
12"					1151		1160		1122				
18"				1146			873			801			
24"	201	315	412				523				382	292	180

PERFORMANCE DATA

	MAX. POWER @ 12"H
PPF	2600 μmol/s
PPFD	1393 μmol/m2/s
PPE	2.7 μmol/J

RECOMMENDED SET-UP

Flower: 4' X 6' Area

Veg: 4' X 6' Area, Max: 4' X 8' Area

RECOMMENDED SET-UP FOR COMMERCIAL INDOOR GARDEN

Vegetative stage is 75% power at about 36" -48" high

FLOWER STAGE SET-UP PER WEEK

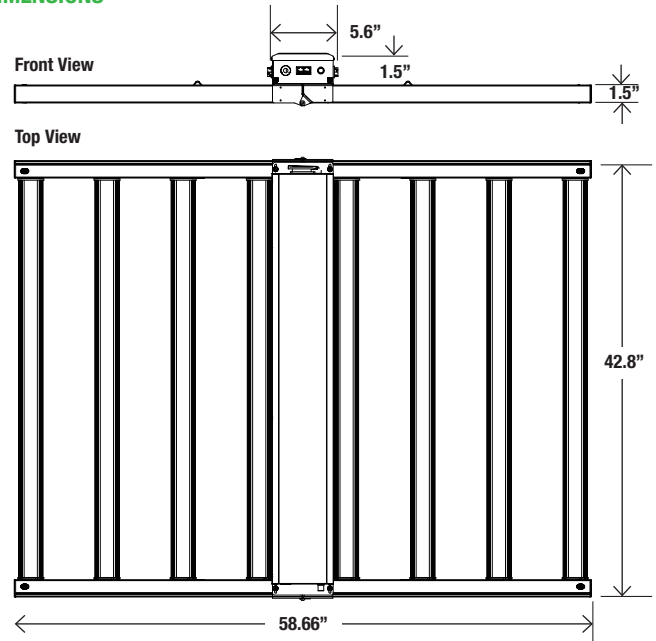
1-2 week is 75% power at 36" high

3-6 week is 75% power at 24" high

7-8 week is 100% power at 18" high

9-10 week is 110% power at 18" high

DIMENSIONS



GROSS WEIGHT: 52 lbs

WHAT'S IN THE BOX

- 1x network cable for daisy chain
- 1x 120-240V plug adapter
 - 2x steel wire sling
- 2x 1/8 lifting pulley hoist rope hook
 - 4x thumb screw