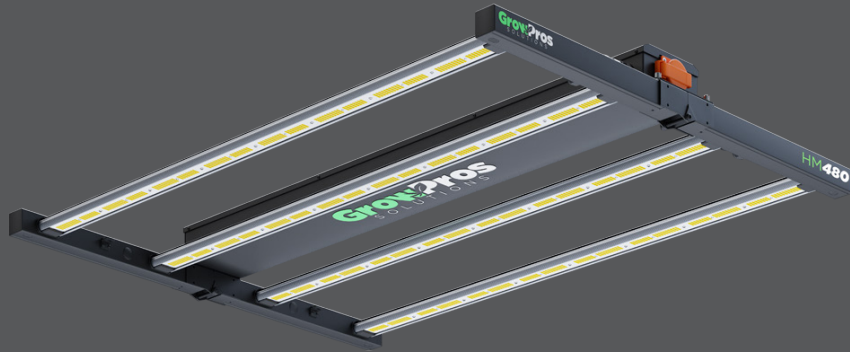


Project Name:	Type:
Note:	Date:

## LED LIGHTING SOLUTION FOR COMMERCIAL INDOOR AND GREENHOUSE APPLICATIONS

# HM480<sup>®</sup> Series



### GPS-HM-480-UNI-36R

A full-spectrum LED rack lighting solution designed for commercial indoor and greenhouse applications, enabling control over the plant cycle from the vegetative stage to the flowering stage. Indoor plants grow best under full-spectrum lights, which replicate the natural spectrum of the sun. The HM480 Series, with an increased lifespan over traditional grow light sources, cultivates healthier, happier plants.

#### INTENDED APPLICATIONS

- Hydroponic cannabis growing
- Indoor greenhouse



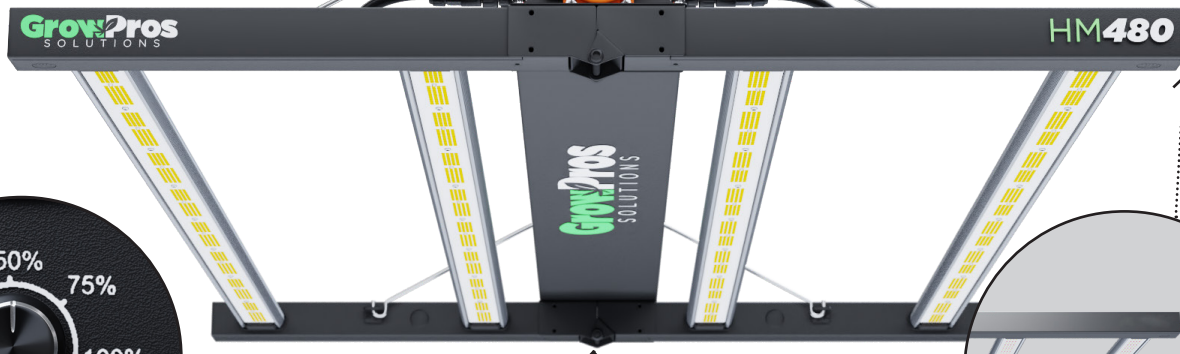
#### FEATURES & BENEFITS

- Compatible with TrolMaster system+Adapter LMA-14
- Added one extension bar on each side to cover 4' x 4' or 4' x 5' grow tray
- Come with 120-277V AC output quick access outlet on the fixture
- Foldable design, easy installation
- Up to 30% more energy saving than traditional HID and HPS
- Optimized spectrum proven by growers for veg and flowering
- Superior delivered PPF and PAR exceeding 1000W HPS
- Scientifically engineered to maximize photosynthesis, growth, and yield



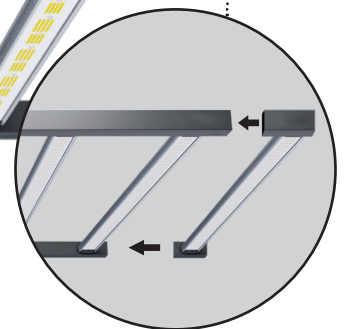
#### 120-277V AC OUTPUT QUICK ACCESS OUTLET

Max load power 2200W at 120V  
Max load power 4300W at 240V  
Max load power 4900W at 277V



#### DIMMER

The HM480 comes with an integral dimmer that you can adjust to 25, 50, 75, 100, and 110 percent for an extra boost of power.



#### EXTENDABLE BARS

The HM480 has removable end caps in order to attach additional bars to each end. Each extended bar has a 150W individual driver and the PPF is 340 umol/s. It is ideal for hanging on top of a 4' x 4' or 4' x 5' grow tray.

#### CONTROL SYSTEM

Works with TrolMaster Hydro control systems. You will need to use a lighting control adapter F(LMA-14). When you put the dimmer in EXT mode, it is ready to connect to the control system (If you daisy chain these lights and use a control system to control them together, you need to switch it to EXT mode).

Project Name:	Type:
Note:	Date:

## LED LIGHTING SOLUTION FOR COMMERCIAL INDOOR AND GREENHOUSE APPLICATIONS

### TECHNICAL SPECIFICATIONS

WATTAGE	<b>480W</b>
INPUT POWER	<b>120V-277V</b>
FREQUENCY	<b>50/60Hz</b>
CONTROL	<b>0-10V dimming (0-100%)</b>
POWER FACTOR	<b>0.9</b>
THD	<b>20%</b>
THERMAL MANAGEMENT	<b>Passive</b>
WORKING TEMPERATURE	<b>-40°F ~ 122°F</b>
IP RATING	<b>IP44, Suitable for dry &amp; damp locations</b>
WARRANTY	<b>7 year limited</b>

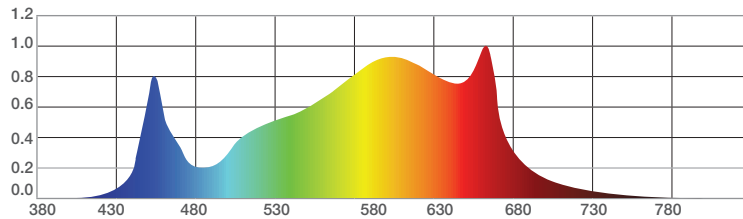
### HEAT LOAD

HEAT LOAD PER FIXTURE	<b>2148 BTU</b>
-----------------------	-----------------

### MAXIMUM POWER ELECTRICAL DATA

AC VOLTAGE	120V	208V	240V	277V
AC CURRENT	<b>4.0A</b>	<b>2.32A</b>	<b>2.01A</b>	<b>1.78A</b>
AC POWER	<b>480W</b>	<b>472W</b>	<b>470W</b>	<b>467W</b>
POWER FACTOR	<b>0.998</b>	<b>0.982</b>	<b>0.969</b>	<b>0.944</b>

### SPECTRAL DISTRIBUTION



### PPFD READING

12" Height @ Max. Power Set-up									
	24"	18"	12"	6"	0	6"	12"	18"	24"
24"	102	162	242	300	352	328	302	242	166
18"	162	312	458	573	632	631	572	446	273
12"	223	437	654	783	856	863	794	618	361
6"	258	506	757	895	961	966	900	699	423
0	293	530	773	913	978	987	908	708	427
6"	279	518	756	875	930	940	877	665	414
12"	252	463	663	774	818	834	760	586	352
18"	175	319	454	522	569	560	529	415	258
24"	104	171	236	280	286	303	269	222	144

### PERFORMANCE DATA

	MAX. POWER @ 12"H
PPF	<b>1300 μmol/s</b>
PPFD	<b>1121 μmol/m2/s</b>
PPE	<b>2.7 μmol/J</b>

### RECOMMENDED SET-UP

**Flower:** 3' X 4' Area, Max: 4' X 4' Area

**Veg:** 4' X 4' Area, Max: 5' X 5' Area

### RECOMMENDED SET-UP FOR COMMERCIAL INDOOR GARDEN

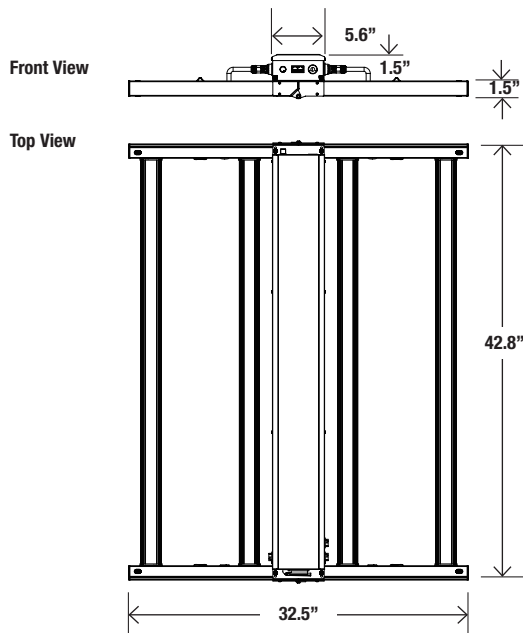
Vegetative stage is 100% power at about 24"-48" high

### FLOWER STAGE SET-UP PER WEEK

1-5 week is 100% power at 24" high

6-10 week is 100% power at 12" high

### DIMENSIONS



**GROSS WEIGHT: 30 lbs**

### WHAT'S IN THE BOX

- 1x network cable for daisy chain
- 1x 120-240V plug adapter
  - 2x steel wire sling
- 2x 1/8 lifting pulley hoist rope hook
  - 4x thumb screw