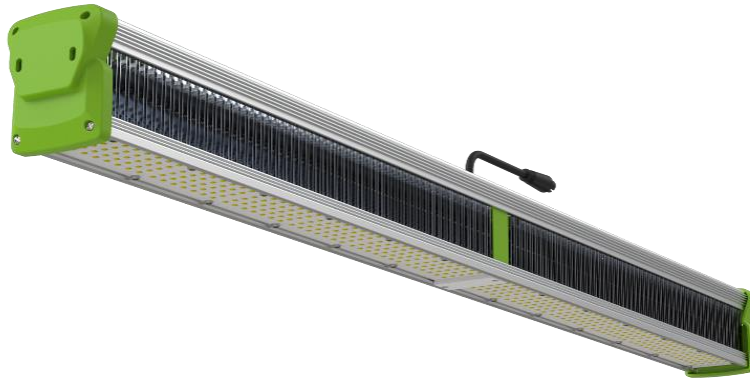


TotalGrow™ HI-Top 330 & 640

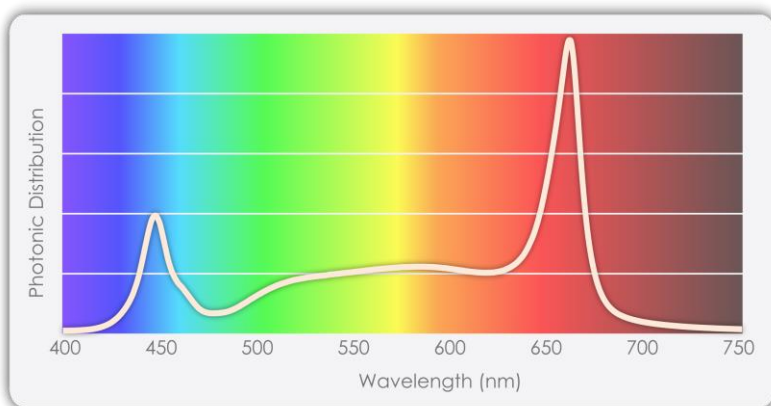


Performance Grow Lighting that Saves

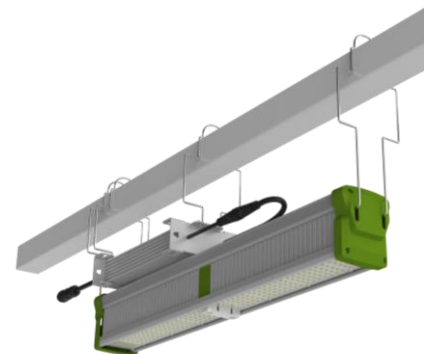
Achieve your target yields and quality.

Save time, money, electricity, and sales.

- 345W or 660W power at up to 3.1 $\mu\text{mol}/\text{J}$ for the light intensities your plants need
- Robust, reliable and streamlined design for simple utilization
- Side reflector add-on for uniform, efficient edge lighting
- Full spectrum for exceptional versatility

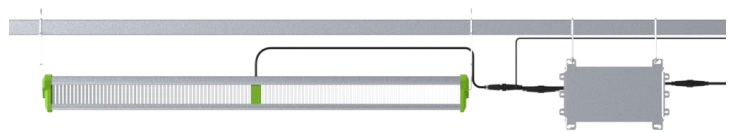
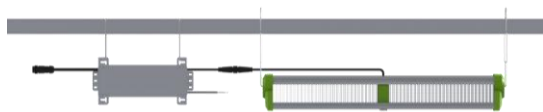


Spectrum/Power/Efficacy Customization Available



contact: info@totalgrowlight.com



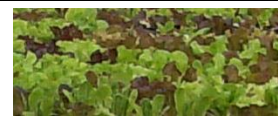

The TotalGrow HI-Top light bar is an ideal, cost-effective, utility-incentive-friendly fit for greenhouse or indoor top-lighting with rugged construction and a narrow-profile body that mounts easily to support structures. Excellent efficacies are maximized by a versatile and highly effective grow spectrum, minimal shadowing, and optional side reflectors for uniform light delivery. Daisy-chain power and dimming control for low cost installation and operation.



HI-Top Product Specifications:	HI-Top 330	HI-Top 330 HE	HI-Top 640 BF	HI-Top 640	HI-Top 640 HE
Product Number	TG33B4-R0J-28-D1-K0BJ6	TG33B4-R1J-31-D1-K0BJ6	TG64B4-R2J-25-D1-K0BA6	TG64B4-R0J-29-D1-K0BA6	TG64B4-R1J-31-D1-K0BA6
Output	907 $\mu\text{mol/s}$	1061 $\mu\text{mol/s}$	1685 $\mu\text{mol/s}$	1865 $\mu\text{mol/s}$	2015 $\mu\text{mol/s}$
Efficacy	2.6 $\mu\text{mol/J}$	3.1 $\mu\text{mol/J}$	2.5 $\mu\text{mol/J}$	2.9 $\mu\text{mol/J}$	3.1 $\mu\text{mol/J}$
Power Consumption	345W		660W		
Input Voltage (VAC)	100-277 / 277-480*		100-277 / 277-480*		(*HV 480V Models)
Daisy-Chain Limit @120/240/480V	4 / 8 / 16* Lights		2 / 4/ 8* Lights (with linking cables)		
Current @120/240/480V	2.9 / 1.5 / 0.74* Amps		5.6 / 2.8 / 1.4* Amps		
Length x Width x Height	25 x 3 x 4 inches		43 x 3 x 4 inches		
Weight (lbs.)	6 (bar) + 4 (driver) = 10		11 (bar) + 6 (driver) = 17		
Dimmable	0-10V + 12V aux power		0-10V + 12V aux power		
Projected Service Life / Warranty	50,000 hours / 5 year				
Waterproof	IP66				

Usage Guidelines

Every application is unique, and our lighting experts will gladly provide you with a detailed, custom light plan (contact info@totalgrowlight.com). In the meantime, the following chart may provide helpful generalizations:

	Light Level Target	Low		Medium		High	
	Plant Size	Small		Medium		Large	
Examples		Germination, Cuttings, Microgreens		Late Propagation, Lettuce, Basil		Tomatoes, Moderate Cannabis Lighting	
							
Supplemental (Greenhouse Sun + TotalGrow Lights)		330W	640W	330W	640W	330W	640W
	Light Intensity (PPFD):	50 $\mu\text{mol/m}^2/\text{s}$		100 $\mu\text{mol/m}^2/\text{s}$		300 $\mu\text{mol/m}^2/\text{s}$	
	Coverage (sq. ft)	170	325	80	170	25	50
	Spacing (ft)	13	18	9	13	5	7
	Height (ft)	7-11	10-15	5-8	7-11	3-5	4-6
Sole Source (100% TotalGrow Lighting)		330W	640W	330W	640W	330W	640W
	Light Intensity (PPFD):	120 $\mu\text{mol/m}^2/\text{s}$		270 $\mu\text{mol/m}^2/\text{s}$		1000 $\mu\text{mol/m}^2/\text{s}$	
	Coverage (sq. ft)	72	140	30	60	9	16
	Spacing (ft)	8.5	12	5.5	8	3	4
	Height (ft)	5-6	7-9	3-4	5-6	2	3

- Shorten growth cycles • Improve yields and quality • Reliably produce year-round
- Reduce 40-60% of energy compared to HPS • Long, low maintenance life
- Excellent light uniformly • Easy installation • Versatile, aesthetic, customizable spectrum