

SPECIFICATIONS

•Model: SUPP-IR16

- Spectrum: 730-745nm
- PPF: 33.15 μmol/s
- Power Draw: 8W ± 5% (Per Bar)
- Core Coverage: 3ft x 2ft
- Light Size: 23.62" x 1.21" x 1.36" (60 x 3.08 x 3.45 cm)
- Input Voltage: AC100-277V
- Amp: 0.1358A @ AC120V, 0.08062A @ AC240V, 0.0767A @ AC277V
- Frequency: 50/60Hz
- Operating Temperature: -20 to 35°C
- LEDs: 44 pcs (Per Bar)
- Lifespan: 50,000 hours
- Input Power Cable: 59.06" (150cm)
- Lamp Head Cable Length: 27.56" (70cm)

•Model: SUPP-R30

- Spectrum: 660nm
- PPF: 77.39 μmol/s
- Power Draw: 15W ± 5% (Per Bar)
- Core Coverage: 3ft x 2ft
- Light Size: 23.62" x 1.21" x 1.36" (60 x 3.08 x 3.45 cm)
- Input Voltage: AC100-277V
- Amp: 0.2542A @ AC120V, 0.1450A @ AC240V, 0.1396A @ AC277V
- Frequency: 50/60Hz
- Operating Temperature: -20 to 35°C
- LEDs: 44 pcs (Per Bar)
- Lifespan: 50,000 hours
- Input Power Cable: 59.06" (150cm)
- Lamp Head Cable Length: 27.56" (70cm)

•Model: SUPP-UV30

- Spectrum: 365-370nm
- PPF: 12.31 μmol/s
- Power draw: 15W±5% (Per Bar)
- Core Coverage: 3ft x 2ft
- Light Size: 23.62" x 1.21" x 1.36" (60 x 3.08 x 3.45 cm)
- Input Voltage: AC100-277V
- Amp: 0.1829A@AC120V, 0.1052A@AC240V, 0.09803A@AC277V
- Frequency: 50/60HZ
- Operating Temperature: -20 to 35°C
- LEDs: 60 pcs (Per Bar)
- Lifespan: 50,000 hours
- Input Power Cable: 59.06" (150cm)
- Lamp Head Cable Length: 27.56" (70cm)

•Model: SUPP-IR30

- Spectrum: 730-745nm
- PPF: 60.58 μmol/s
- Power Draw: 15W ± 5% (Per Bar)
- Core Coverage: 4ft x 2ft
- Light Size: 35.43" x 1.21" x 1.36" (90 x 3.08 x 3.45 cm)
- Input Voltage: AC100-277V
- Amp: 0.2413A @ AC120V, 0.1356A @ AC240V, 0.1257A @ AC277V
- Frequency: 50/60Hz
- Operating Temperature: -20 to 35°C
- LEDs: 88 pcs (Per Bar)
- Lifespan: 50,000 hours
- Input Power Cable: 59.06" (150cm)
- Lamp Head Cable Length: 27.56" (70cm)

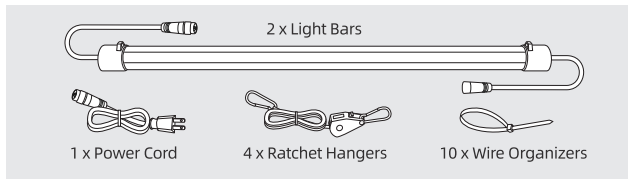
•Model: SUPP-R60

- Spectrum: 660nm
- PPF: 148 μmol/s
- Power Draw: 27W ± 5% (Per Bar)
- Core Coverage: 4ft x 2ft
- Light Size: 35.43" x 1.21" x 1.36" (90 x 3.08 x 3.45 cm)
- Input Voltage: AC100-277V
- Amp: 0.4882A @ AC120V, 0.2527A @ AC240V, 0.2233A @ AC277V
- Frequency: 50/60Hz
- Operating Temperature: -20 to 35°C
- LEDs: 88 pcs (Per Bar)
- Lifespan: 50,000 hours
- Input Power Cable: 59.06" (150cm)
- Lamp Head Cable Length: 27.56" (70cm)

•Model: SUPP-UV60

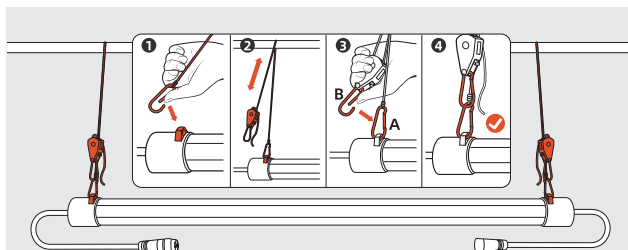
- Spectrum: 365-370nm
- PPF Value: 30.92 μmol/s
- Power draw: 27W±5% (Per Bar)
- Core Coverage: 4ft x 2ft
- Light Size: 35.43" x 1.21" x 1.36" (90 x 3.08 x 3.45 cm)
- Input Voltage: AC100-277V
- Amp: 0.4447A@AC120V, 0.2429A@AC240V, 0.2214A@AC277V
- Frequency: 50/60HZ
- Operating Temperature: -20 to 35°C
- LEDs: 120 pcs (Per Bar)
- Lifespan: 50,000 hours
- Input Power Cable: 59.06" (150cm)
- Lamp Head Cable Length: 27.56" (70cm)

PACKAGE INCLUDES



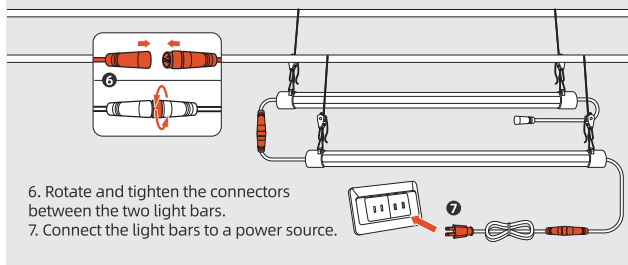
INSTALLATION

折叠线



1. Attach end A of the ratchet hanger to the hole at one end of the light bar.
2. Hang the rope of the ratchet hanger and adjust it to the desired height.
3. Attach end B of the ratchet hanger to end A.
4. Repeat steps 1-3 to hang the other end of the light bar.
5. Repeat steps 1-4 to hang the second light bar.

折叠线

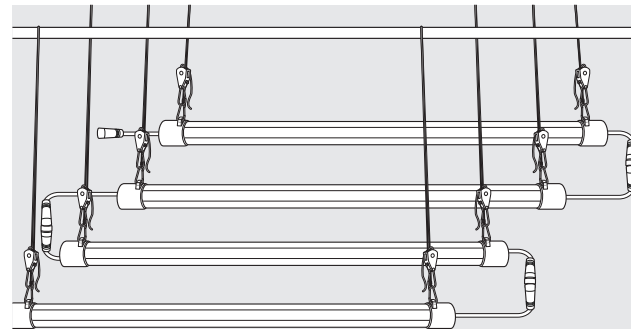


6. Rotate and tighten the connectors between the two light bars.
7. Connect the light bars to a power source.

折叠线

折叠线

DAISY CHAIN FUNCTION



Note:

The connectable quantities mentioned below are applicable exclusively to light bars of the same model.

SF-SUPP-IR16:

1. Up to 40 single bars can be connected in series under 110V.
2. Up to 80 single bars can be connected in series under 220V.

SF-SUPP-IR30:

1. Up to 22 single bars can be connected in series under 110V.
2. Up to 43 single bars can be connected in series under 220V.

SF-SUPP-UV30

1. Up to 22 single bars can be connected in series under 110V.
2. Up to 43 single bars can be connected in series under 220V.

SF-SUPP-UV60

1. Up to 12 single bars can be connected in series under 110V.
2. Up to 24 single bars can be connected in series under 220V.

SF-SUPP-R30

1. Up to 22 single bars can be connected in series under 110V.
2. Up to 43 single bars can be connected in series under 220V.

SF-SUPP-R60

1. Up to 12 single bars can be connected in series under 110V.
2. Up to 24 single bars can be connected in series under 220V.

折叠线

折叠线

WHY CHOOSE SPIDER FARMER?



Well-established business:

We are proud to be collaborating with Samsung.



Shipping:

- A. Global Delivery Available: We deliver worldwide.
- B. Multiple Warehouses: With warehouses in the USA, CA, AU, UK, EU, RU, and TH, we can offer fast delivery within 24 hours.



Customer Service:

- A. Local Repair Centers: We have repair centers in the USA, CA, AU, UK, EU, and RU for your convenience.
- B. 5-Year Warranty.
- C. Dedicated Customer Service: Our friendly and professional customer service department is always ready to assist you.



Professional Technical Support:

We have a team of experts available to assist you with any technical issues.



Bulk Price Discounts:

Discounts for Large Orders: The more you order, the cheaper the price!

Spider Farmer USER MANUAL SUPPLEMENTAL LIGHT BARS

Revolutionize your harvest with SF-SUPP Series

折叠线

折叠线



SF-SUPP-01

APPLICATION

Introducing Spider Farmer advanced supplemental light bar, featuring strategically spaced diodes designed for uniform coverage and deep canopy penetration. The Spider Farmer advanced supplemental light bar also boasts tandem capabilities to cater to the diverse needs of both individual and commercial growers. We recommend mounting the light bar above plants to enhance the light intensity and direct wavelengths directed downward from your primary light source.



折叠线

折叠线

USING TIPS

light Type	Daily	Usage Tips
Far Red (IR)	30 minutes	Wake Up: Turn on IR 15 minutes before the main light. Plant Sleep: Turn on IR 15 minutes after the main light is turned off.
Deep Red	Synchronize with the use of the main light.	
Ultraviolet (UV)	1-2 hours	Mid and Late Veg: 1 hour Early Flower: 1 - 1.5 hours Mid Flower: 1.5 - 2 hours Early Flower: 2 hours
Tips		1. IR: Use for all stages except germination. 2. Gradually increase UV duration, monitoring for stress/damage. 3. Wear protective glasses when using the light.

折叠线

折叠线

PRODUCT WARNING

- Carefully read all installation and usage instructions. Ensure that the power source complies with the electrical requirements of this product.
- Exercise caution during installation to avoid damaging or cutting the wire insulation, and ensure that wires do not come in contact with any sharp edges.
- If you are unfamiliar or have concerns about installing this product, seek the services of a qualified, trained, and licensed professional. Improper installation will void the product's warranty.
- This product must not be used in potentially hazardous locations such as those with flammable, explosive, chemical-laden, or wet conditions.
- Do not cover power cords with rugs or other fabric materials.
- Safety precautions should be observed during the installation, operation, and maintenance of this product.
- Do not block or tamper with the product while in use, as it may cause electric shock, fire, or damage.
- Unplug the power cord before installing, servicing, or moving the product.
- Do not operate this product if its cord is damaged, if it malfunctions, has been dropped, or is damaged in any way.
- Wear protective gear and avoid direct exposure to LED fixtures: For tasks such as replacing or maintaining UV lamps, ensure the use of suitable protective equipment, such as goggles and gloves. This is to prevent harm to your eyes.

折叠线

折叠线

WARRANTY INFORMATION

Spider Farmer offers warranty services for customers in the United States, Canada, United Kingdom, European Union, and Australia. Please note that the following options are applicable exclusively within these regions.

- 30-Day Return or Exchange Policy:**
 - Initiate a return or exchange within 30 days of delivery by providing proof of purchase.
 - Grow tents must be in their original condition for eligibility.
 - Spider Farmer covers the shipping costs for returns or replacements.
- 1-Year Defect Warranty:**
 - Spider Farmer provides free after-sales service for defects within the first year.
 - Customers returning ineligible products or parts will incur a premium charge, billed to the customer's credit card/PayPal for the authorized amount.
- Exclusions:**

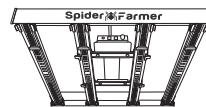
The warranty does not cover misuse, abuse, or normal wear and tear, such as scratches.amount.
- Limitation of Liability:**

Spider Farmer is not liable for consequential or incidental damages.

OTHER CATEGORIES

Led Grow Lights

Spider Farmer SE series utilizes Samsung LM301B diodes, while the G series utilizes Bridgelux diodes to deliver robust and consistent light output, ensuring optimal canopy penetration and maximizing yields. Each light is equipped with a dimming box, enabling adjustable light intensity and the capability to link multiple lights for even light distribution. These feature makes them an excellent choice for large-scale indoor and commercial plant growth.



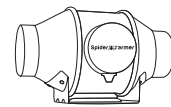
Grow Tents

Spider Farmer grow tents are designed to create ideal growing conditions for indoor plant cultivation. By adopting a unique 16800 Oxford canvas and Diamond reflective Mylar, Spider Farmer grow tents effectively maximize light reflectivity and prevent light leaks. The metal frame is made from hardened steel, and our tents are three-times thicker and denser than ordinary tents. Additionally, with a stable metal angle adapter, our grow tents have a load capacity of up to 140 lbs.



Inline Fan

Utilizing a mixed flow design combined with an EC motor, the Spider Farmer Inline Fan ensures true energy efficiency with a very low noise level. Lightweight ABS blades reduce airflow resistance and increase airflow by 40%. The smart controller offers multiple modes of operation, including 10 speeds, is easy to program, and can control the humidity and temperature automatically.



Heat Mat

The Spider Farmer heat mat, with its advanced design, quickly heats the root area to 50-77°F (10-25°C) above the ambient air temperature within 2 minutes. Compared to traditional heating wires, the innovative far-infrared film heats faster, consumes less energy, and distributes heat more uniformly. In addition, the Spider Farmer heat mat does not deplete the moisture in the air, making it more conducive to the germination and rooting processes in indoor gardening.



YOUR RELIABLE INDOOR GROW PARTNER

折叠线

折叠线

Our Social Media



Contact:

Tel: +1 8409776768

Email: support@spider-farmer.com

info@spider-farmer.com