

AC INFINITY

IONBEAM GREEN

PLANT NIGHT CYCLE WORK LIGHT

USER MANUAL

WELCOME

Thank you for choosing AC Infinity. We are committed to product quality and friendly customer service. If you have any questions or suggestions, please don't hesitate to [contact](#) us. Visit www.acinfinity.com and click contact for our contact information.

EMAIL

support@acinfinity.com

WEB

www.acinfinity.com

LOCATION

Los Angeles, CA

MANUAL CODE NEG2308X1

PRODUCT

IONBEAM GREEN

MODEL

AC-NEG16

UPC-A

819137024380

MANUAL INDEX

Manual Index	Page 5
Product Warning	Page 6
Key Features	Page 7
Product Contents	Page 8
Installation	Page 9
Controller Mounting	Page 14
Starter Guide	Page 15
UIS™ Platform	Page 16
Connecting to UIS™	Page 17
Programming	Page 18
Other AC Infinity Products	Page 19
Warranty	Page 20

PRODUCT WARNING



TO REDUCE THE RISK OF FIRE, ELECTRIC SHOCK, OR INJURY TO PERSONS, OBSERVE THE FOLLOWING:

1. Ensure your power source conforms to the electrical requirements of this product.
2. Read all instructions before installing and using this product.
3. Be careful not to damage or cut the wire insulation (covering) during the installation. Do not permit wires to come in contact with any sharp edges.
4. If you are unfamiliar or have doubts about performing this product's installation, seek the services of a qualified, trained, and licensed professional. Inappropriate installation will void this product's warranty.
5. This product must not be used in potentially hazardous locations such as flammable, explosive, chemical-laden or wet atmospheres.
6. Do not cover power cords with rugs or other fabric materials.
7. Safety precautions should be exercised during the installation, operation, and maintenance of this product.
8. Do not block or tamper with this product in any manner while it is in operation as it may cause electric shock, fire, or damage to this product.
9. Do not depend on the on/off programming as the sole means of shutting power from this product. Unplug the power cord before installing, servicing, or moving this product.
10. Do not operate this product while its cord is damaged, or if it malfunctions, has been dropped, or is damaged in any manner.
11. Avoid staring directly at any lighting fixture for extended periods of time.

KEY FEATURES

PLANT-GENTLE

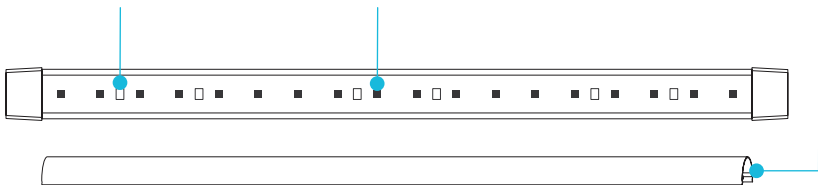
Spectrum maintains dark period integrity by providing lighting that will not impact your plant's grow cycle.

ENHANCED SPECTRUM

Supports existing blue and red LED grow lights to effectively improve overall lighting quality.

GREATER FLEXIBILITY

Optional diffuser evens light distribution and increases coverage area. Easily detach for supplemental lighting.



VERSATILE MOUNTING

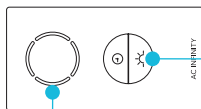
Cold-rolled steel bar with matte black powder coating provides sturdy base for placement on any grow tent.

ADJUSTABLE DIMMING

4 light intensity levels provide increased versatility to support work in grow tents and larger grow rooms.

AUTO-OFF FUNCTIONALITY

Smart programming includes automatic shut-off functionality as well as UIS compatible for access to more automations.



PRODUCT CONTENTS



LIGHT
BAR
(x1)



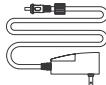
LIGHT
DIFFUSER
(x1)



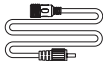
MOUNTING
BAR
(x1)



LIGHT
CONTROLLER
(x1)



POWER
ADAPTER
(x1)



BAR EXTENSION
CORD (M-F)
(x2)



UIS EXTENSION
CORD (M-M)
(x1)



WOOD SCREWS
(WALL MOUNT)
(x4)



HOOK AND LOOP
CABLE TIES
(x2)



WIRE
MOUNT
(x2)

INSTALLATION

LIGHT BAR CHAIN ASSEMBLY

STEP 1

Connect the light bar's female port to the light controller's male connector.

STEP 2

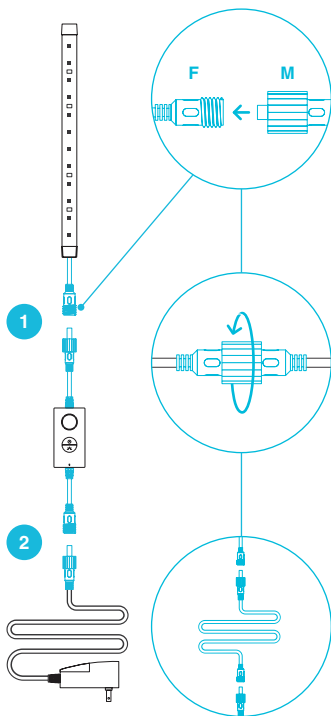
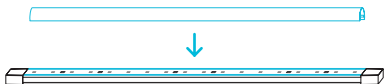
Connect the light controller to the power adapter.

EXTENDING THE CHAIN

You may connect the included bar extension cords in between any link in this light bar chain to lengthen it. Secure all connections using the twist-on pieces.

DIFFUSER

You may snap on the diffuser for a softer and more even light distribution.



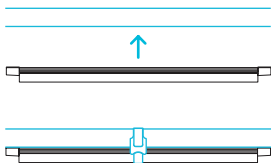
INSTALLATION

LIGHT BAR MOUNTING

POLE MOUNTING

Magnetically mount your light bar directly on your grow tent steel pole.

You may also use the included hook and loop cable ties around your light bar and mounting bar to adjust the lighting angle and for extra security.



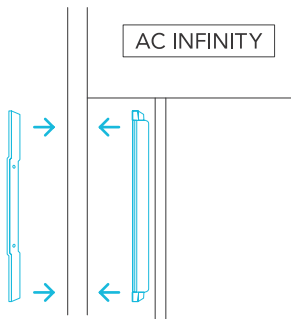
CANVAS MOUNTING

Magnetically mount your light bar to the wall or ceiling of your grow tent.

Set the included mounting bar on the outer side of your tent. Set your light bar at the exact spots on the inner side.

Once mounted, you can move the light bar and mounting bar connection along your grow tent surface as needed.

Test that the magnetic connection through the canvas is secure before use.

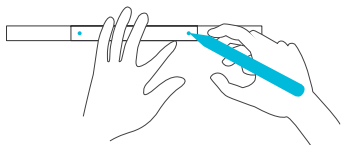


INSTALLATION

LIGHT BAR MOUNTING

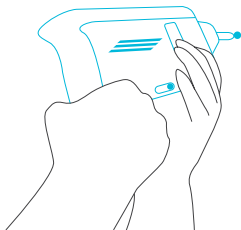
STEP 1 — WALL MOUNTING

Make sure that your mounting area is free from obstruction. Use a mounting bar to mark your drilling holes with the logo facing the wall.



STEP 2 — WALL MOUNTING

Drill holes into the marked locations.



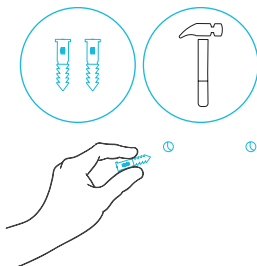
INSTALLATION

LIGHT BAR MOUNTING

STEP 3 — WALL MOUNTING

If you are mounting onto anything other than a wood support or stud, insert the included four wall anchors into the drilled mounting holes.

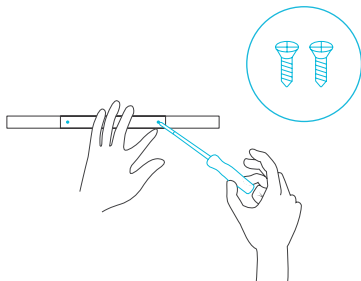
You may need to use a hammer to secure them through the holes.



STEP 4 — WALL MOUNTING

Align the mounting bar holes with the wall anchors, making sure the logo faces the wall.

Screw or drill in the wood screws to secure the mounting bar.



INSTALLATION

LIGHT BAR MOUNTING

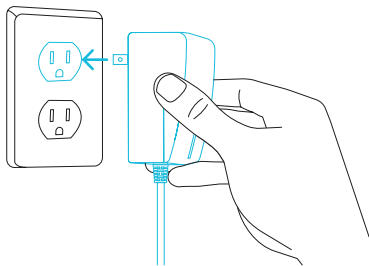
STEP 5 — WALL MOUNTING

Set the light bar magnet ends onto the mounting bar.



POWERING THE LIGHT

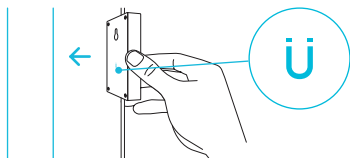
Plug the power adapter into a wall outlet.



CONTROLLER MOUNTING

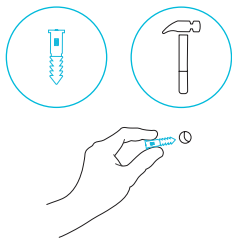
MAGNET MOUNTING

Magnetically mount the light controller onto any steel surface.



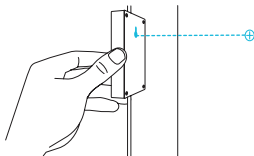
STEP 1 — WALL MOUNTING

Locate a spot free of obstruction and secure the anchor into your wall. Twist the wood screw into the anchors.



STEP 2 — WALL MOUNTING

Use the mounting hole located on the back of the controller for wall mount.



STARTER GUIDE

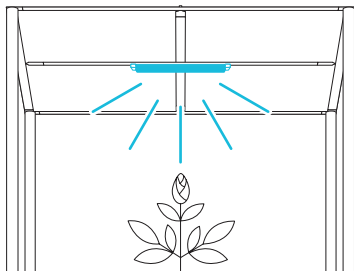
GROW LIGHT PLACEMENT

Place your light bar at the top of your grow space, shining down to provide even coverage over the entire area.

Grow devices like inline fans and grow lights can be placed below the light and will not obstruct the light's reach.

LIGHT INTENSITY

Start your grow light at 25% light intensity. Increase it as needed to provide a visible workspace or to complement your main grow light.

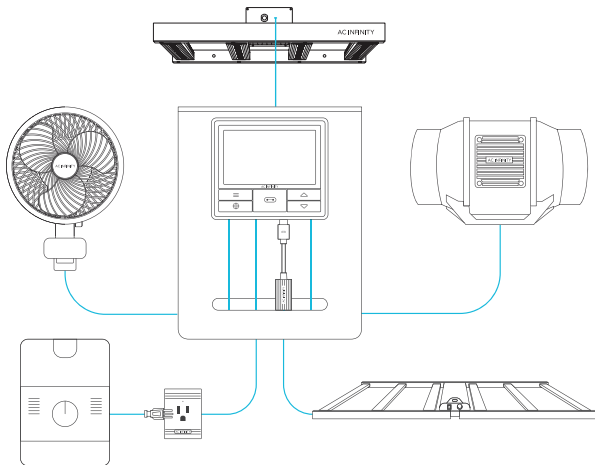


UIS™ PLATFORM

The UIS™ platform enables you to connect a single central controller with several grow devices simultaneously. By creating this fully integrated system, you can power and program all your devices together or separately for optimized grow tent management.

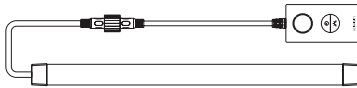
Your grow system can be regulated using your controller hub or remotely on the AC Infinity app (paired with compatible controllers), where you will have access to automation programming and climate data.

You can also connect your favorite grow light and outlet device to integrate them into the UIS platform using our RJ11/12 adapter and control plug module.



Central controller and grow devices will be sold separately and may still be in development at the time of your purchase of this product.

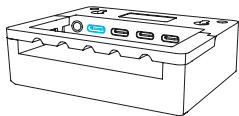
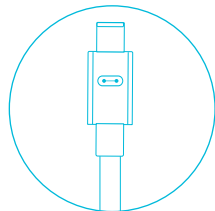
CONNECTING TO UIS™



IONBEAM LED grow lights can connect with select smart controllers as part of an integrated system using the included UIS extension cord.

CONNECTING TO UIS CONTROLLERS

Use the included UIS M-M extension cord to connect your light bar(s) to your selected UIS controller via the light controller's side port.



Your selected UIS controller will override all of the light controller's onboard settings when connected in this manner.

PROGRAMMING

1. LIGHTING

Pressing the light button will increase the light intensity level in 25% increments (25% - 100%), displayed with white LED indicators. Pressing this button at 100% intensity will cycle to 0%.

Holding any button will shut off your light bar and the timer. Pressing any button when your light bar is off will turn the light and the timer back on at their previous settings.

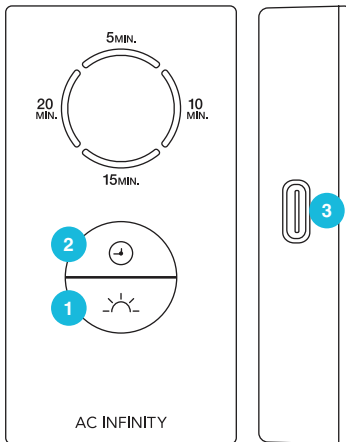
Setting the light intensity without setting a timer will keep the light on indefinitely.

2. TIMER

Pressing the clock button will set the timer in 5-minute increments (5MIN. - 20MIN.), displayed with orange LED indicators.

Lighting will be active for the amount of time set here (ex. 15MIN. for a 15 minute timer). It will deactivate after the indicated time has passed. Pressing any button when your light bar is off will turn the light and timer back on at their previous settings.

Pressing the clock button at the 20MIN. setting will deactivate the timer.



3. UIS CONNECTION

Refer to the programming section of your selected UIS controller for programming instructions.

AC INFINITY PRODUCTS

Pruning Shears

Stainless-steel gardening shears designed to effectively trim and fine-tune small plants to support healthy growth. The razor sharp blades are coated in non-stick Titanium to prevent resin-buildup through heavy use, and are controlled via spring-loaded handles specially constructed for maximum comfort.



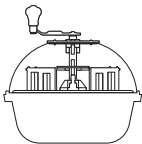
Drying Racks

A polyester mesh netting rack designed to dry and cure plant materials within a multi-tiered hanger system. The steel wireframe build can support heavier capacities within its zippered chambers while remaining collapsible for easy storage when not in use.



Bowl Trimmers

A manually operated trimming machine designed to quickly and efficiently process high volumes of finely groomed herbs, buds and flowers. Features straight blades for wet trimming and serrated blades for dry trimming, controlled by an easy-to-use removable hand crank and collected in a non-stick bowl.



Discover the latest innovations in environmental controls at acinfinity.com

WARRANTY

This warranty program is our commitment to you, the product sold by AC Infinity will be free from defects in manufacturing for a period of two years from the date of purchase. If a product is found to have a defect in material or workmanship, we will take the appropriate actions defined in this warranty to resolve any issues.

The warranty program applies to any order, purchase, receipt, or use of any products sold by AC Infinity or our authorized dealerships. The program covers products that have become defective, malfunctioned, or expressively if the product becomes unusable. The warranty program goes into effect on the date of purchase. The program will expire two years from the date of purchase. If your product becomes defective during that period, AC Infinity will replace your product with a new one or issue you a full refund.

The warranty program does not cover abuse or misuse. This includes physical damage, submersion of the product in water, incorrect installation such as wrong voltage input, and misuse for any reason other than intended purposes. AC Infinity is not responsible for consequential loss or incidental damages of any nature caused by the product. We will not warrant damage from normal wear such as scratches and dings.

Contact our dealers department at dealers@acinfinity.com or (626) 838-4656 for more information about our dealers and distributors program. Contact our customer service department at support@acinfinity.com or 626-923-6399 for product and warranty assistance. Our business hours are Monday through Friday, 9:00 am to 5:00 pm PST.



If you have any issues with this product, contact us and we'll happily resolve your problem or issue a full refund!

COPYRIGHT © 2023 AC INFINITY INC. ALL RIGHTS RESERVED

No part of the materials including graphics or logos available in this booklet may be copied, photocopied, reproduced, translated or reduced to any electronic medium or machine readable form, in whole or in part, without specific permission from AC Infinity Inc.

www.acinfinity.com