



LIGHTING REIMAGINED

# LED LINEUP



Say hello to the next generation of enhanced full-spectrum commercial light fixtures from ION. Our most powerful unit can exceed the light output of a 1000W Double-Ended High Intensity Discharge Lamp— but reduce electrical usage and HVAC costs by nearly 35%. Professional cultivators can achieve ultimate yield and quality without breaking the bank or sacrificing sustainability.



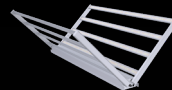
**36W**  
LED



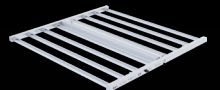
**320W**  
LED



**630W**  
LED



**720W**  
LED



**XR-830W**  
LED

# 36W LED



## Technical Specifications

Input Power	18W
Input Voltage	120V-277V
120V	0.152A
208V	0.092A
240V	0.085A
277V	0.075A
Input Frequency	50/60 Hz
Light Output: PPF	41.4 $\mu\text{mol/s}$
Efficacy	2.3 $\mu\text{mol/J}$
Lifetime L90	> 54,000 hrs
Water-Resistance	IP 65
Warranty	5 Year Standard Warranty
Dimensions	1120x31x55 mm / 44.0 9x1.22x1.5 inch
Weight	04. kg   0.88 lbs
Operating Temperature	0°C~35°C / 32°F~95°F
Operating Humidity	0%~95%
Thermal Management	Passive
Power Factor	$\geq 0.90$

## 36W Clone LED

This low and delicate 36W Clone LED light is perfect for rooting and is a great replacement for T5/T8 fluorescent lamps. With no glass construction, it is far more durable in shipping and handling than traditional fluorescent lights.



Rooting, Clone  
& Veg Optimized



5 Year  
Warranty



DLC listed  
Peace-of-Mind



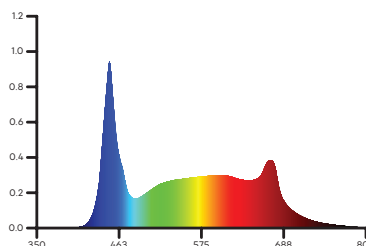
Lifetime L90  
> 54,000 hrs



PPF  $\approx 41.4$  PPF  
( $\mu\text{mol/sec}$ )



Water Resistant  
IP 65 Rating



DLC: IONLED 23636

PRICE: \$85 MSRP

HRG  
DISTRIBUTION

866-328-6996  
www.hrgdist.com

# DURABLE NO GLASS BUILT FOR ROOTING & CLONING

## 36W Clone LED

Achieve ultimate growing power through the best possible LED diodes available. ION 36W Clone LED grow lights are one of the most powerful LED lights in its class with a standard ppf of 41.4  $\mu\text{mol/s}$  and an impressive efficacy of 2.3  $\mu\text{mol/J}$  per watt.

## Complete Control

Growers can set the optimal intensity at the clone stage to stimulate peak photosynthesis. Compatible with most lighting controllers.

## Energy Saving

With more energy savings and less HVAC required, you can optimize your grow while saving on utility costs and reducing your ecological footprint.





LIGHTING REIMAGINED

# 320W LED



## Technical Specifications

Input Power	320W
Input Voltage	120V-277V
120V	2.79A
208V	1.59A
240V	1.45A
277V	1.26A
Input Frequency	50/60 Hz
Light Output: PPF	800 $\mu\text{mol/s}$
Efficacy	2.5 $\mu\text{mol/J}$
Lifetime L90	> 78,000 hrs
Water-Resistance	IP 65
Warranty	5 Year Standard Warranty
Dimensions	1193x536x50 mm / 47x21.1x2 inch
Weight	6 kg / 13.2 lbs
Operating Temperature	0°C~35°C / 32°F~95°F
Operating Humidity	0%~95%
Thermal Management	Passive
Power Factor	$\geq 0.9$

## 320W LED

In just half the size and more power than other leading lights, this 320W LED is the perfect choice for clone as well as veg stages. At 2x4 that fits perfectly into a bakers rack, it packs a serious punch into a compact frame.



Daisy Chain Series Compatible



5 Year Warranty



DLC listed Peace-of-Mind



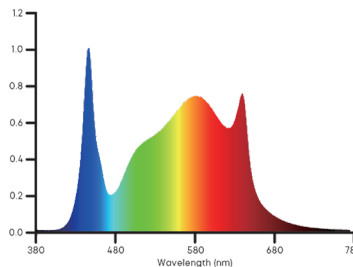
Lifetime L90 > 78,000 hrs



PPF  $\approx$  800 PPF ( $\mu\text{mol/sec}$ )



Water Resistant IP 65 Rating



DLC: IONLED 19879 FSG 25 D1

PRICE: \$1,299 MSRP



866-328-6996  
www.hrgdist.com

# POWERFUL & COMPACT LIGHT FOR CLONE & VEG STAGES

## 320W LED

Achieve ultimate growing power through the best possible LED diodes available.

## Complete Control

Growers can set the optimal intensity for the clone and veg growth stages to stimulate peak photosynthesis. Compatible with most lighting controllers.

## Energy Saving

With more energy savings and less HVAC required, you can optimize your grow while saving on utility costs and reducing your ecological footprint.

## Uniform Light Distribution

The ION LED 320W is engineered to deliver consistent levels of photosynthetic flux density (PPFD).



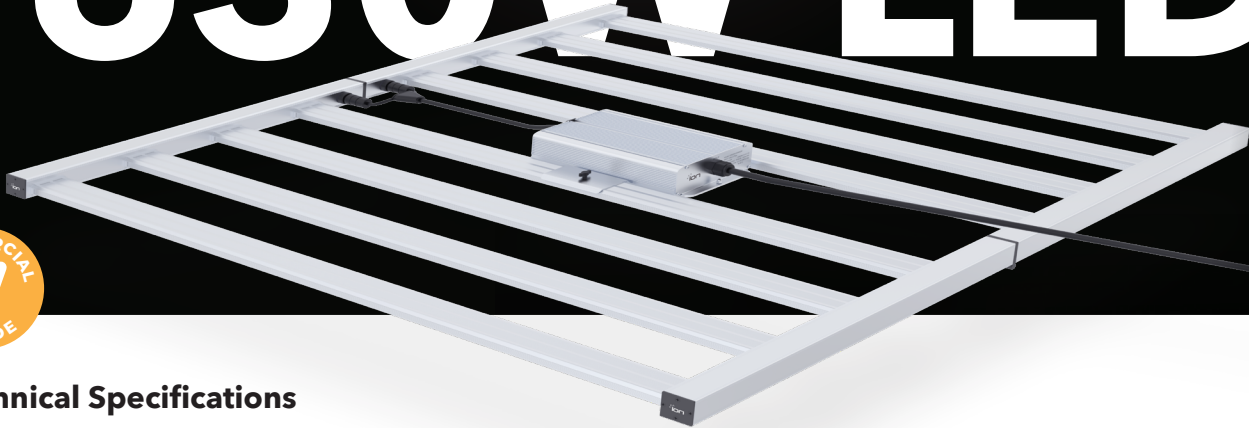
ION LED 320W

Hydroponical Certificate  
Model: ION LED 320W PFA 25 51  
320W PFA 25 51 Max  
AC/DC 277V 50/60Hz  
2.5 Amps 800mA  
PFA 25 51



MADE IN CHINA

# 630W LED



## Technical Specifications

Input Power	630W
Input Voltage	120V-277V
120V	5.43A
208V	3.05A
240V	2.62A
277V	2.28A
Input Frequency	50/60 Hz
Light Output: PPF	1700 $\mu\text{mol/s}$
Efficacy	2.7 $\mu\text{mol/J}$
Lifetime L90	> 50,000 hrs
Water-Resistance	IP 66
Warranty	5 Year Standard Warranty
Dimensions	1125x1110x70 mm / 44.3x43.7x2.8 inch
Weight	10.6 kg / 23.37 lbs
Operating Temperature	0°C~35°C / 32°F~95°F
Operating Humidity	0%~95%
Thermal Management	Passive
Power Factor	$\geq 0.97$

## 630W LED

Perfect for pro growers and more efficient than HID lights, the 630W LED provides maximum uniformity for higher yields. Packed with features including random start, soft start, soft dimming, over-temperature, over-voltage undervoltage, and open/short circuit protection, this light will seriously step up your grow.



**High Efficiency**



**5 Year Warranty**



**DLC listed  
Peace-of-Mind**



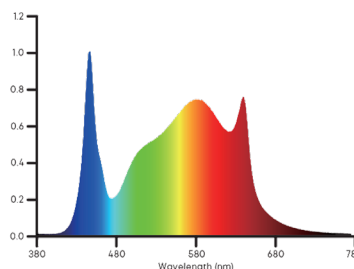
**Lifetime L90  
> 50,000 hrs**



**PPF  $\approx$  1700 PPF  
( $\mu\text{mol/sec}$ )**



**Water Resistant  
IP 66 Rating**



DLC: IONLED COMM630

**PRICE: \$999 MSRP**

**HRG**  
DISTRIBUTION

**866-328-6996**  
[www.hrgdist.com](http://www.hrgdist.com)

# MAXIMUM UNIFORMITY & EFFICIENCY FOR HIGHER YIELDS

## 630W LED

Built for professional cultivators who demand the ultimate yield and quality. ION 630W grow lights are one of the most powerful LED lights in its class, with a standard ppf of 1700  $\mu\text{mol/s}$  and an impressive efficacy of 2.7  $\mu\text{mol/J}$  per watt.

## Complete Control

With a built-in dimming function, growers can set the optimal intensity at any growth stage to stimulate peak photosynthesis. Compatible with most lighting controllers.

## Energy Saving

With up to 37% energy savings and 50% less HVAC required, you can optimize your grow while saving on utility costs and reducing your ecological footprint.





LIGHTING REIMAGINED

# 720W LED



## Technical Specifications

Input Power	720W
Input Voltage	120V-277V, 480V
120V	6.17A
208V	3.48A
240V	2.98A
277V	2.63A
480V	1.50A
Input Frequency	50/60 Hz
Light Output: PPF	1872 $\mu\text{mol/s}$
Efficacy	2.6 $\mu\text{mol/J}$
Lifetime L90	> 54,000 hrs
Water-Resistance	IP 65
Warranty	5 Year Standard Warranty
Dimensions	1193x1933x72 mm/ 47x47x2.8 inch
Weight	12.2 kg   26.9 lbs
Operating Temperature	0°C~35°C / 32°F~95°F
Operating Humidity	0%~95%
Thermal Management	Passive
Power Factor	$\geq 0.90$

## 720W LED

Superior to any 1000W HPS, with up to 40% energy savings and 40% less HVAC required, the 720W LED is powerful & feature packed to increase your yield and your wallet. Over voltage & undervoltage protection will ensure you never have to worry about anything but your grow.

**\*480V Special Order Available. 60-120 Day Lead Time.**



Professional Cultivator Designed



5 Year Warranty



DLC listed Peace-of-Mind



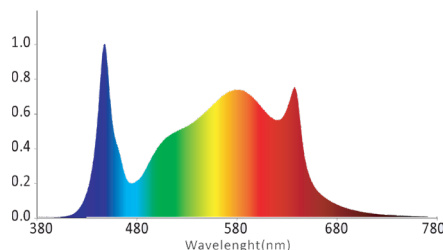
Lifetime L90 > 54,000 hrs



PPF  $\approx 1872$  PPF ( $\mu\text{mol/sec}$ )



Water Resistant IP 65 Rating



DLC: IONLED 19879 FSG 25 D1

PRICE: \$825 MSRP



866-328-6996  
www.hrgdist.com



# POWERFUL & FEATURE PACKED TO INCREASE YOUR YIELD

## 720W LED

ION has created the next generation of full spectrum LED fixtures. ION 720W grow lights are one of the most powerful LED lights in its class with a standard ppf of 1800/1944  $\mu\text{mol/s}$  and an impressive efficacy of 2.6  $\mu\text{mol/J}$  per watt. The ION LED was built for cultivators who demand the ultimate yield and quality.

## Full Spectrum: FSG

The unique deployed full spectrum fills the negligence of the main photoreceptors and pigments outside the 660nm and 450nm range. It's suitable for reproduce on to aging in indoor environments which increases the radiant energy of red light at 660nm wavelength in white light. The overall color temperature of full spectrum FSG's controlled at 4000K. It provides a beautiful working environment and a more realistic color reproduction degree at a CRI level of 88.



# XR-830W LED



## Technical Specifications

Input Power	830W
Input Voltage	120V-277V, 480V
120V	7.14A
208V	4.07A
240V	3.55A
277V	3.06A
480V	1.73A
Input Frequency	50/60 Hz
Light Output: PPF	2410 $\mu\text{mol/s}$
Efficacy	2.90 $\mu\text{mol/J}$
Lifetime L90	> 50,000 hrs
Water-Resistance	IP 66
Warranty	5 Year Standard Warranty
Dimensions	1145x1110x60 mm/ 45.1x 43.7 x2.4 inch
Weight	10.3 kgs / 22.7 lbs
Operating Temperature	0°C~35°C / 32°F~95°F
Operating Humidity	0%~95%
Thermal Management	Passive
Power Factor	$\geq 0.97$

## XR-830W LED

One of the most powerful commercial LED lights on the market, the XR-830W LED has increased red to improve efficiency and effectiveness, soft-start / random start, soft dimming (step measure), and foldable design for ease of transportation & installation. With over voltage & undervoltage protection, it doesn't get more powerful and featured than this.

**\*480V Special Order Available. 60-120 Day Lead Time.**



**Maximum Power**



**5 Year Warranty**



**DLC listed  
Peace-of-Mind**



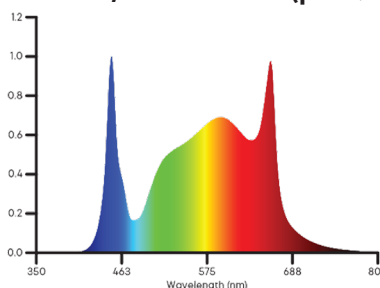
**Lifetime L90  
> 50,000 hrs**



**PPF  $\approx$  2410 PPF  
( $\mu\text{mol/sec}$ )**



**Water Resistant  
IP 66 Rating**



DLC: IONLED COMM830

**PRICE: \$1,299 MSRP**

**HRG**  
DISTRIBUTION

**866-328-6996**  
[www.hrgdist.com](http://www.hrgdist.com)

# THE MOST PREFERED COMMERCIAL LED LIGHT ON THE MARKET

## XR-830W LED

ION has created the next generation of full spectrum commercial LED fixtures. ION XR-830W grow lights are one of the most powerful LED lights in its class with a standard ppf of 2410  $\mu\text{mol/s}$  and an impressive efficacy of 2.9  $\mu\text{mol/J}$  per watt. The ION XR LED was built for professional cultivators who demand the ultimate yield and quality.

## Full Spectrum: FSG

The specially deployed full spectrum fills the negligence of the main photoreceptors and pigments outside the 660nm and 450nm range and it is suitable for reproduce on to aging in indoor environments which increases the radiant energy of red light at 660nm wavelength in white light . The overall color temperature of s full spectrum FSG' s controlled at 4000K. It provides a beautiful working environment and a more realistic color reproduction degree at a CRI level of 88.





[www.hrgdist.com](http://www.hrgdist.com)