

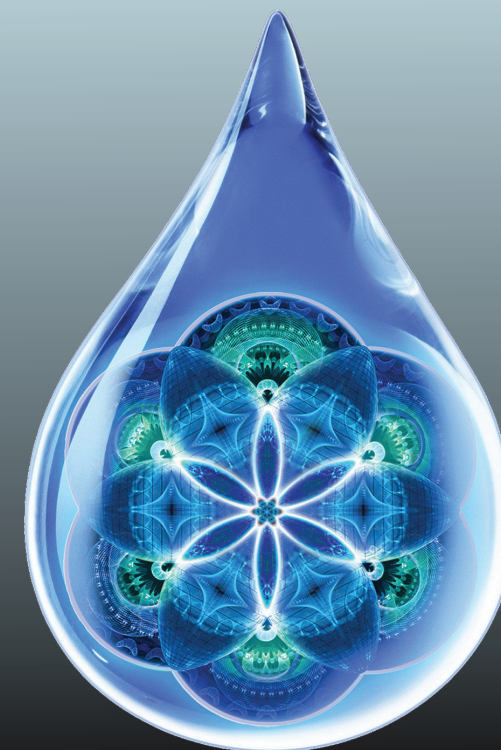
# REPLACEMENT & UPGRADE FILTERS



PART DESCRIPTION	HydroLogic Part #	Filter Replacement Schedule	Reduces ppm (by 94-99%+)	Reduces Chlorine	Reduces Chloramines	Reduces Sediment & Dirt	Reduces Iron	Reduces Sulfur
ARCS Stage 1 Sediment Filter	22015.2	5,000 Gal	N	N	N	Y	N	N
ARCS Stage 2 Heavy Metal Reduction Filter	22015.4	10,000 Gal	Y	N	N	N	Y	Y
ARCS Stage 3 pH Neutralizing/Remineralizing Filter	22015.3	10,000 Gal	N	N	N	N	N	N
BigBoy Green Coconut Carbon Filter	22005	25,000 Gal	N	Y	N	N	N	N
BigBoy KDF85/Catalytic Carbon Upgrade Filter	22070	50,000 Gal	N	Y	Y	N	Low Levels	Low Levels
BigBoy Sediment Filter	22010	Clean Regularly - Change Annually	N	N	N	Y	N	N
Eco-Spring 4-Stage Main Filter	22035	Change Annually	Y	Y	Y	Y	Low Levels	Low Levels
Eco-Spring Post Re-Mineralizing Filter	22040	6 - 12 Months	N	Y	N	N	N	N
Evolution-RO 1000 KDF85/Catalytic Carbon Filter	22043	2,000 Gal *	N	Y	Y	Y	Low Levels	Low Levels
Evolution-RO 1000 Membrane Element Filter	22045	6 Months - 2 Years	Y	N	N	N	Low Levels	Low Levels
Evolution-RO 1000 De-Ionization Post-Filter	22017	18,750 ppm Capacity	Y	N	N	N	Y	Y
Merlin-Garden Pro Green Coconut Carbon Filter	22080	1,500 Gal	N	Y	N	Y	N	N
Merlin-Garden Pro Membrane Element Filter	22085	6 Months - 2 Years	Y	N	N	N	Low Levels	Low Levels
Merlin-Garden Pro Sediment Filter (For Non-Chlorinated Water)	22090	1,500 Gal (approx) *	N	N	N	Y	N	N
micRO-75 KDF85/Granulated Catalytic Carbon Filter	22073	1,000 Gal *	N	Y	Y	Y	Low Levels	Low Levels
micRO-75 Membrane Element Filter	22074	6 - 18 Months	Y	N	N	N	Low Levels	Low Levels
micRO-75 De-Ionization Post-Filter	22072	4,500 ppm Capacity	Y	N	N	N	Y	Y
Pre-Evolution KDF85/55 Granulated Catalytic Carbon Filter	22096	7,500 Gal *	N	Y	Y	N	Low Levels	Low Levels
Pre-Evolution Sediment Filter	22097	Clean Regularly - Change Annually	N	N	N	Y	N	N
smallBoy Sediment Filter	22105	3,000 Gal (approx)	N	N	N	Y	N	N
Stealth-RO/smallBoy Green Coconut Carbon Filter	22110	3,000 Gal smallBoy 1,250 Gal Stealth-RO *	N	Y	N	N	N	N
Stealth-RO/smallBoy KDF85/Catalytic Carbon Upgrade Filter	22060	6,000 Gal smallBoy 2,000 Gal Stealth-RO *	N	Y	Y	N	Low Levels	Low Levels
Stealth-RO 150/300 Membrane Element Filter (NEW)	22121	6 Months - 2 Years	Y	N	N	N	Low Levels	Low Levels
Stealth-RO 100/200 Membrane Element Filter	22120	6 Months - 2 Years	Y	N	N	N	Low Levels	Low Levels
Stealth-RO Sediment Filter	22125	Clean Regularly - Change Annually	N	N	N	Y	N	N
Stealth-RO De-Ionization Post-Filter	22016	7,500 ppm Capacity	Y	N	N	N	Y	Y
Stealth-RO 100/200 Cold Water Membrane Element Filter	22122	6 Months - 2 Years	Y	N	N	N	Low Levels	Low Levels
TallBoy/TallBlue Green Coconut Carbon Filter	22135	7,500 Gal - TallBoy 4,500 Gal - TallBlue	N	Y	N	N	N	N
TallBoy/TallBlue KDF85/Catalytic Carbon Upgrade Filter	22065	15,000 Gal - TallBoy 6,000 Gal - TallBlue	N	Y	Y	N	Low Levels	Low Levels
TallBoy/TallBlue Sediment Filter	22140	7,500 Gal - TallBoy (approx) 4,500 Gal - TallBlue (approx)	N	N	N	Y	N	N

\* Filter replacement schedules for Reverse Osmosis carbon filters based on product water

## Product Specifications & Filter Replacement Schedule



HydroLogicSystems.com

## REVERSE OSMOSIS SYSTEMS

SYSTEM	HydroLogic Part #	Product Water Flow Rate *	Reduces ppm (94-99%)	Reduces Chlorine	Reduces Chloramines	Reduces Sediment & Dirt	Reduces Iron	Reduces Sulfur	Inlet Tubing Size	Product Tubing Size	Waste Tubing Size
EVOLUTION-RO1000	31023	1,000 GPD/42 GPH	Y	Y	Y	Y	Low Levels	Low Levels	1/2" QC	3/8" QC	3/8" QC
ECO-SPRING	31020	50 GPD/2 GPH	Y	Y	Y	Y	Low Levels	Low Levels	1/4" QC	3/8" QC	1/4" QC
MERLIN-GARDEN PRO	Discontinued	750 GPD/30 GPH	Y	Y	N	Y	Low Levels	Low Levels	1/2" QC	3/8" QC	3/8" QC
MICRO-75	31026	75 GPD/3 GPH	Y	Y	Y	Y	Low Levels	Low Levels	1/4" QC	1/4" QC	1/4" QC
STEALTH-RO100	Discontinued	100 GPD/4 GPH	Y	Y	N	Y	Low Levels	Low Levels	3/8" QC	1/4" QC	1/4" QC
STEALTH-RO100 w/KDF	Discontinued	100 GPD/4 GPH	Y	Y	Y	Y	Low Levels	Low Levels	3/8" QC	1/4" QC	1/4" QC
STEALTH-RO200	Discontinued	200 GPD/8 GPH	Y	Y	N	Y	Low Levels	Low Levels	3/8" QC	1/4" QC	1/4" QC
STEALTH-RO200 w/KDF	Discontinued	200 GPD/8 GPH	Y	Y	Y	Y	Low Levels	Low Levels	3/8" QC	1/4" QC	1/4" QC
STEALTH-RO150	31035	150 GPD/6 GPH	Y	Y	N	Y	Low Levels	Low Levels	3/8" QC	1/4" QC	1/4" QC
STEALTH-RO150 w/KDF	36012	150 GPD/6 GPH	Y	Y	Y	Y	Low Levels	Low Levels	3/8" QC	1/4" QC	1/4" QC
STEALTH-RO300	31040	300 GPD/12 GPH	Y	Y	N	Y	Low Levels	Low Levels	3/8" QC	1/4" QC	1/4" QC
STEALTH-RO300 w/KDF	36014	300 GPD/12 GPH	Y	Y	Y	Y	Low Levels	Low Levels	3/8" QC	1/4" QC	1/4" QC

## DE-CHLORINATOR / SEDIMENT SYSTEMS

SYSTEM	HydroLogic Part #	Product Water Flow Rate	Reduces PPM (94-99%)	Reduces Chlorine	Reduces Chloramines	Reduces Sediment & Dirt	Reduces Iron	Reduces Sulfur	Inlet Tubing Size	Product Tubing Size	Waste Tubing Size
ARCS	11670	120 GPH/2 GPM	N	N	N	Y	Y	Y	1/2" QC	3/8" QC	None **
BIGBOY	31005	420 GPH/7GPM	N	Y	N	Y	N	N	1" FNPT Port	1" FNPT Port	None **
BIGBOY w/KDF	36003	420 GPH/7GPM	N	Y	Y	Y	Low Levels	Low Levels	1" FNPT Port	1" FNPT Port	None **
GROGREEN	31024	120 GPH/2 GPM	N	Y	Y	Y	Low Levels	Low Levels	Female Garden Hose Thread	Male Garden Hose Thread	None **
PRE-EVOLUTION	31027	Pre-Filter for Evolution RO-1000	N	Y	Y	Y	Low Levels	Low Levels	1/2" QC	1/2" QC	None **
SMALLBOY	31030	60 GPH/1 GPM	N	Y	N	Y	N	N	1/4" QC	1/4" QC	None **
SMALLBOY w/KDF	36005	60 GPH/1 GPM	N	Y	Y	Y	Low Levels	Low Levels	1/4" QC	1/4" QC	None **
TALLBLUE	Discontinued	Pre-Filter for Merlin-Garden Pro	N	Y	N	Y	N	N	1/2" QC	1/2" QC	None **
TALLBOY	31050	120 GPH/2 GPM	N	Y	N	Y	N	N	3/8" QC	3/8" QC	None **
TALLBOY w/KDF	36010	120 GPH/2 GPM	N	Y	Y	Y	Low Levels	Low Levels	3/8" QC	3/8" QC	None **

### KEY

- GPD** = Gallons Per Day  
**GPH** = Gallons Per Hour  
**GPM** = Gallons Per Minute  
**GAL** = Gallons  
**PPM** = Parts Per Million

\*Flow rates of RO systems are based on source water @ 60 psi /77°/500 ppm

Minimum inlet pressure is 40 psi  
 Maximum inlet pressure is 80 psi

\*\*De-chlorinator / Sediment Systems do not produce waste water



370 Encinal Street  
 Suite 150  
 Santa Cruz, CA 95060

**P:** 888-426-5644

**F:** 831-336-9840

Info@HydroLogicSystems.com

HydroLogicSystems.com

Hyper-Logic.com

/HydroLogicPurification

@HydroLogic