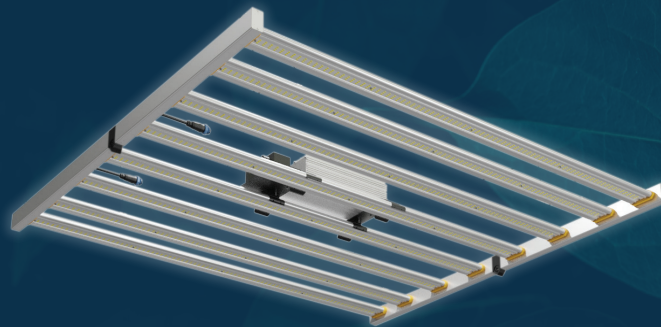


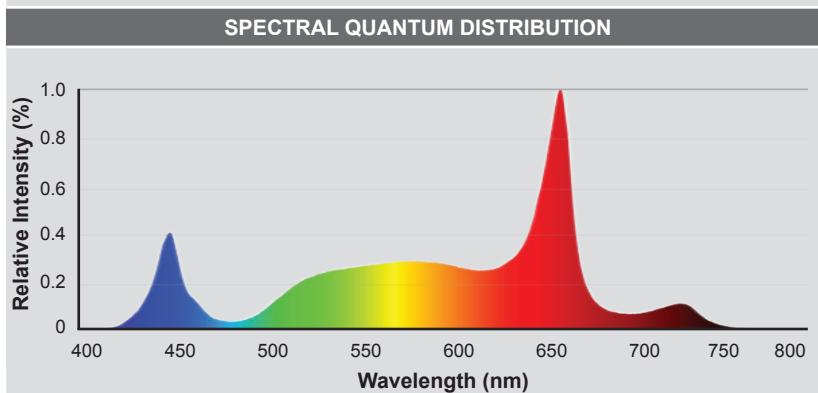
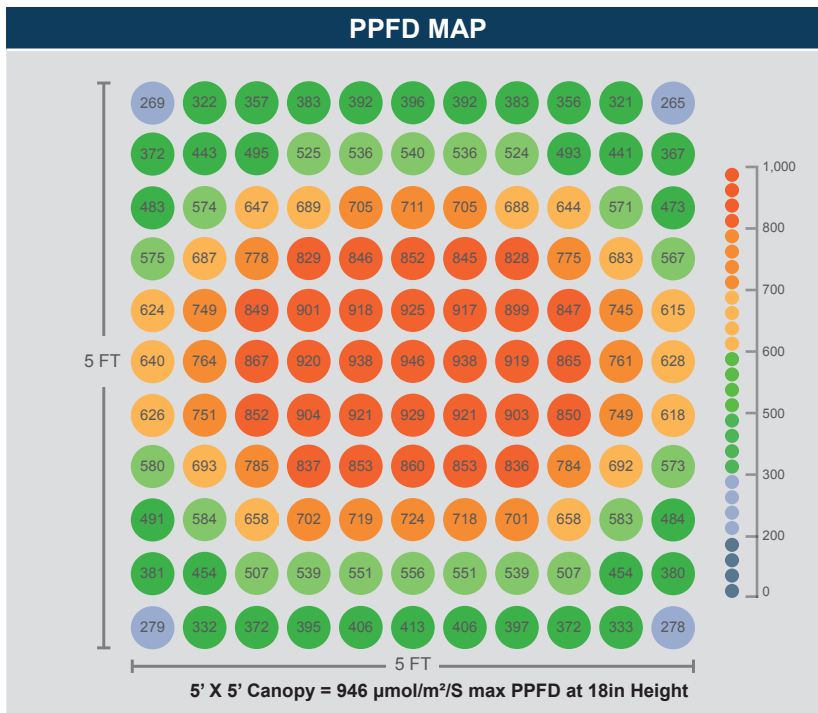
# Franklin F7000 Series

Designed to maximize plant yield and quality, the F7000 utilizes its “**Blood Orange**” rich yellow-red leaning spectrum to deliver efficiency and reliability that punches well above its weight class.

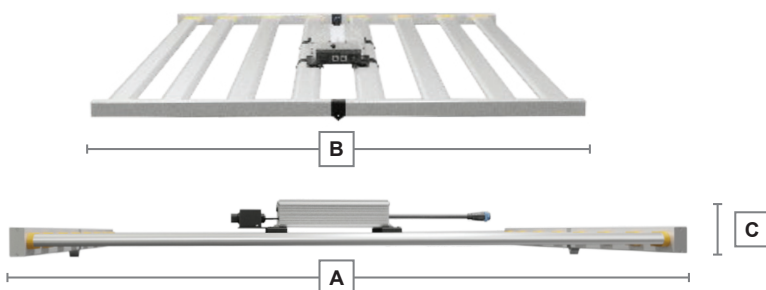


## DESIGNED FOR LARGE SCALE COMMERCIAL GROW HOUSES

SPECIFICATION	
Input Power	720W
Input Voltage	120 - 277 VAC
Voltage Range	100 - 305 VAC
Input Current	7.2A
Min Power Factor	>0.95%
THD	<20%
Operation Frequency	50/60Hz
Max Operation Temp (F°/C)	0 - 104° F / -18 - 40° C
Dimming	Knob Switch Dimming or External 0-10V
Dimmer Mode	25%-50%-75%-100% Sectional Dimming
Color Temperature	3000K-5000K-660nm-730nm
B:G:R:FR	14:33:47:6
PPF (400-700) (μmol/s)	1857.6
PPE (μmol/j)	2.58
PPF (400-800) (μmol/s)	<b>1975</b>
PF Eff (μmol/j)	<b>2.74</b>
18in PPFD (μmol/s/m²)	946
Power Cord	8ft
Lifetime	Q90: >54,000 hrs



## DIMENSIONS



A	Length:	47.24 Inches
B	Width:	42.91 Inches
C	Height:	3.38 Inches
D	Weight:	29.1 lbs.

CERTIFIED



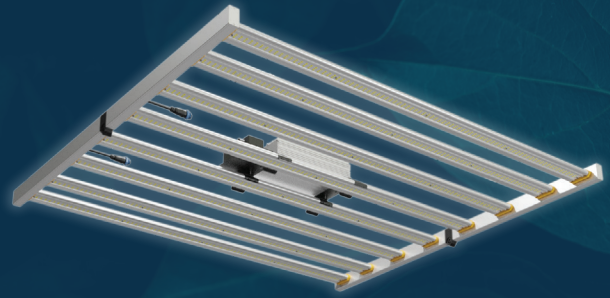
CONTACT US TODAY



# Franklin F7000 Series

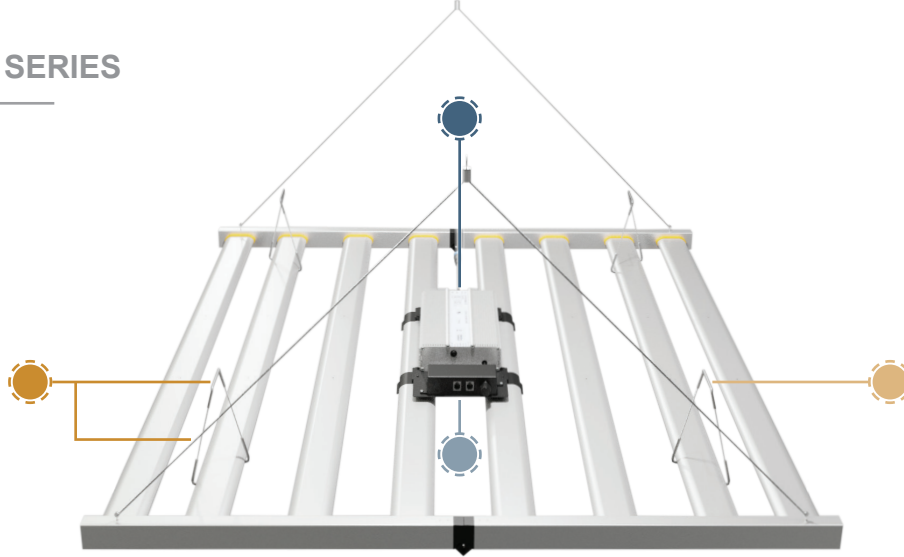
## KEY FEATURES:

- Full spectrum with enhanced reds for full cycle growth
- Adjustable light bars provide even light distribution at any height
- Control each fixture with 0-10V on-board dimmer or an entire space with a controller



DESIGNED FOR LARGE SCALE COMMERCIAL GROW HOUSES

## WHY THE F7000 SERIES



### MUTIPLE MOUNTING OPTIONS

### ELECTRICAL CAPABILITIES



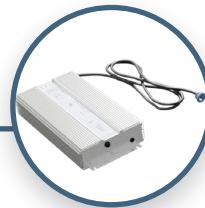
#### Easy Install Design

Designed for simple installation. Suspension cables offer 4 and 2-point mounting options as well as ratchet clips that provide an alternative mounting option.



#### Multiple Mounting Clips

Allow for flexibility in mounting height and application. Clips can be used to mount the fixture on existing metal bars/struts.



#### Remote Mount Driver

Provides flexibility in driver installation. Thanks to an adjustable 10ft lead wire that allows for heat management assistance, place driver on the fixture itself or anywhere in the application.



#### Control Capabilities

Control each individual fixture with a 0-10V on-board dimmer or connect up to 50 LED fixtures with a controller.

## ORDER CODE TABLE

**F**   **7000**   **44**   **UNV**   **S**   **B**   **5**   **P**  
 -   -   -   -   -   -   -   -

MODEL	POWER	SIZE	VOLTAGE	MOUNTING	SPECTRUM	LIFE RATING	ACCESSORIES
<b>F</b> = Flagship Indoor Series	<b>7000</b> = 720 Watts	<b>44</b> = 42" by 47"	<b>UNV</b> = 120-277V	<b>S</b> = All Suspension HW include	<b>B</b> = Blood Orange	<b>5</b> =Q90> 54,000	<b>P</b> = NEMA plug Adapter

www.fslled.com

All trademarks are the property of their respective owners. Information provided is subject to change without notice. All values are design or typical values when measured under laboratory conditions. Flourishing Co. Limited 2021.



CONTACT US TODAY



Email



Phone



Web