



NEW!

# AUTOPOT™ GEOPOT SYSTEM

✓ SELF-WATERING

✓ HYDROPONICS

The **AUTOPOT GEOPOT SYSTEM** combines the best qualities of fabric pots with the convenience and efficiency of self-watering systems to stimulate plant growth by aerating, feeding, and guiding the root structure.

AutoPot systems are designed to allow plants to self-regulate their water intake from the reservoir, providing each plant the exact amount of water or nutrient solution they need to grow optimally. Compared to traditional drain-to-waste or flood-and-drain systems, this reduces wasted water and nutrients, making them a popular choice for both home and commercial gardeners.

## MODULAR SYSTEM

AutoPot systems are modular, and can be upgraded with more pots & bases to fit your needs easily and quickly, with up to 100 pots per system!

- ✓ SIZED RESERVOIR, UP TO 265 GAL FLEXI-TANK
- ✓ XL TUBING
- ✓ QUANTITY OF BASES, EACH WITH AUTOVALVE CONTROL
- ✓ QUANTITY OF FABRIC POTS TO MATCH BASES

## SELF-REGULATING AQUAVALVE

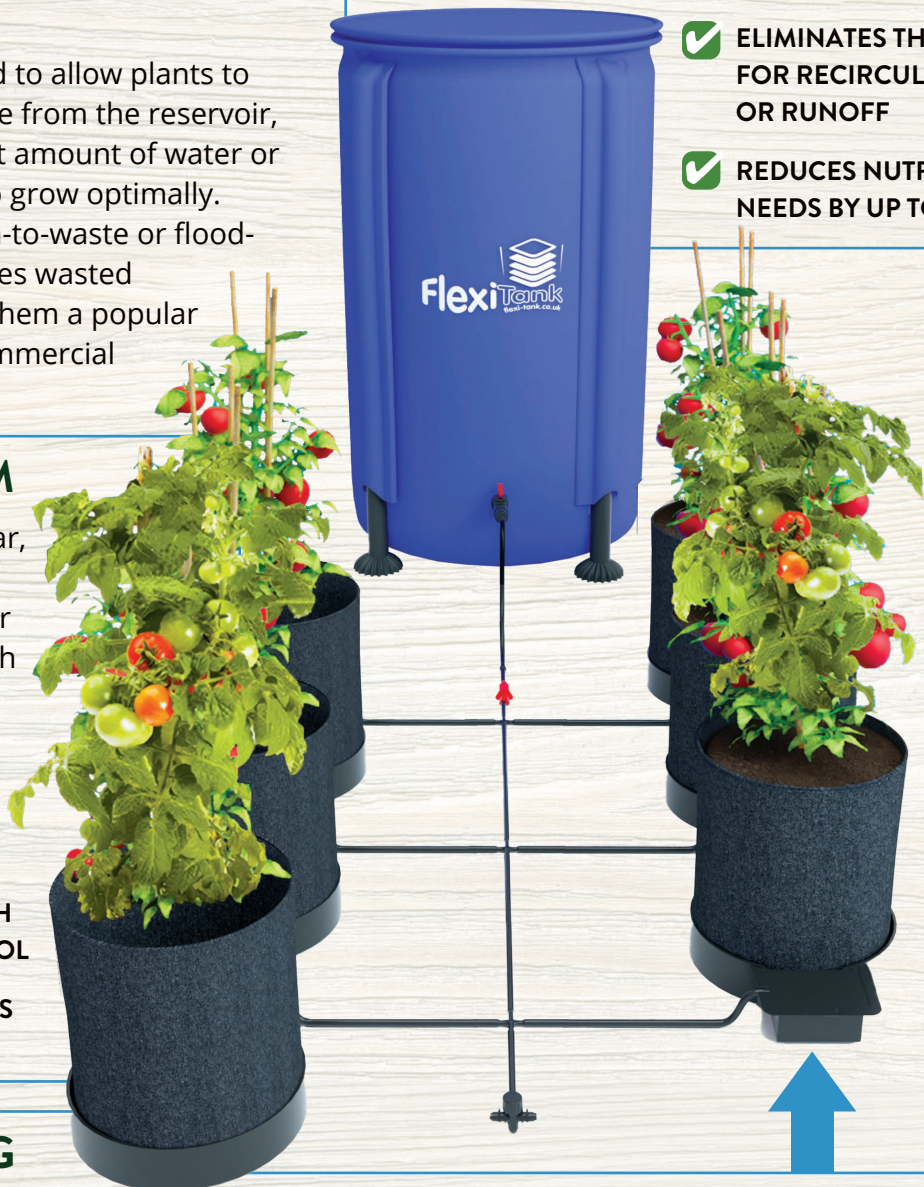
Each base contains a multi-stage valve, using only float activation and air pressure, which is triggered to open when water levels drop to almost dry, and closes after it fills to 3/4".

## SIMPLE TO ASSEMBLE & USE

- ✓ NO COMPLEX PARTS
- ✓ NO COMPUTERS
- ✓ NO REQUIRED ELECTRICITY OR MONITORING

## CONSTANT FEED SYSTEM

- ✓ GRAVITY FED - NO PUMPS REQUIRED
- ✓ SELF-REGULATING FLOAT VALVE EACH BASE
- ✓ ELIMINATES THE NEED FOR RECIRCULATION OR RUNOFF
- ✓ REDUCES NUTRIENT NEEDS BY UP TO 75%



- ✓ EACH TRAY HAS ITS OWN WET/DRY CYCLE, ALLOWING EACH PLANT TO FEED INDIVIDUALLY BASED ON ITS NEEDS
- ✓ ELIMINATES EXCESS STANDING WATER, RECIRCULATION, AND REDUCES WASTE.



## BEST PRACTICES

### SOIL MIX

Compatible with most soil and media types. For best results, use a 50/50 blend of growing media and aeration materials, creating capillary active soil with the ability to hold air in its structure.

Fully establish your plants in the pot by top watering for 1-2 weeks after transplant before turning the system on.

### NUTRIENT MIX

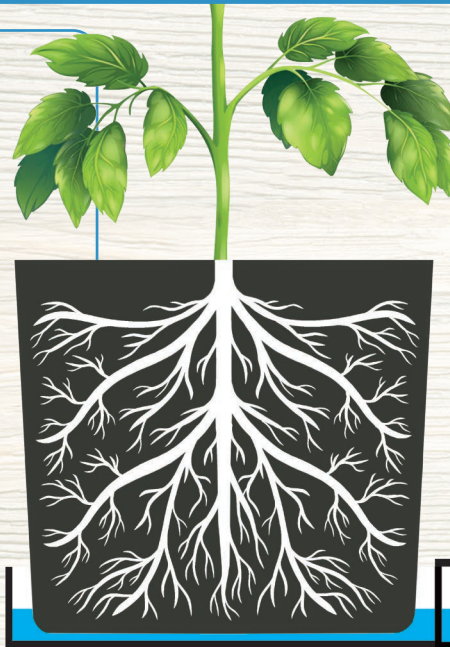
AutoPot works with Organic or Conventional nutrient systems alike, and can even be used in conjunction with amendments, top dresses, and water-only soil blends.

Large-diameter tubing and optional in-line filters combine with regular flush cycles and easy cleaning to allow growers to use even the most viscous organic nutrients.

Any commercially available mineral salt remover may be used when flushing lines.

### AIR ROOT PRUNING

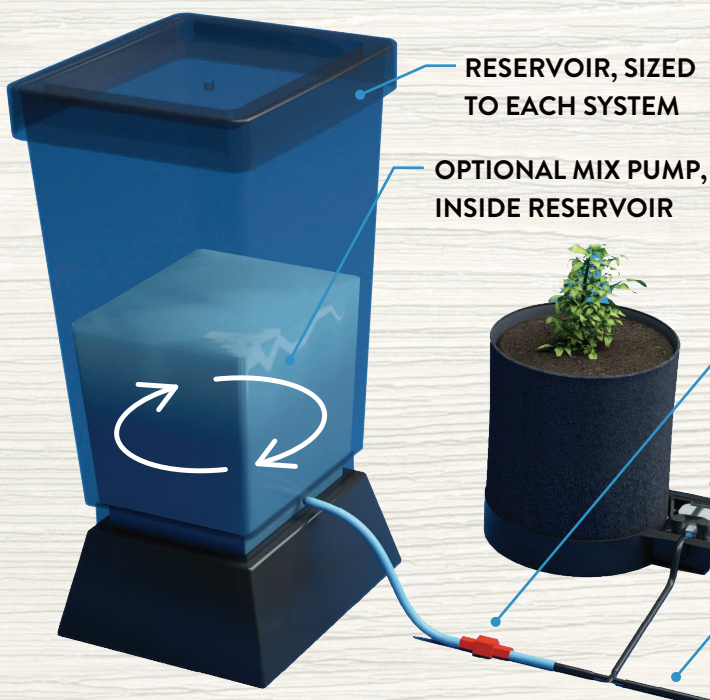
Fabric pots like the **GEOPOT** give your plant the benefits of air root pruning: the porous pot allows more dry air near the outside soil, exposing root tips to dry air, and allowing plants to “self-prune”, avoiding becoming root-bound. Instead, they create new secondary feeder roots, leading to increased absorption of water and nutrients, and growing a well-developed root system in a fraction of the time.



### BOTTOM WATERING

- ✓ WATER WICKS FROM BOTTOM
- ✓ ROOTS CHASE WATER AS IT DROPS, MAKING A STRONG ROOT SYSTEM
- ✓ MINERAL SALTS RISE TO TOP OF SOIL & DON'T REMIX
- ✓ SELF-REGULATING CYCLE ENCOURAGES ROBUST PLANTS AND GREATER PRODUCTION & FRUITING

AQUAVALVE



RESERVOIR, SIZED TO EACH SYSTEM

OPTIONAL MIX PUMP, INSIDE RESERVOIR

### AVAILABLE SIZES

GEOPOT SYSTEMS ARE AVAILABLE WITH 3 AND 5 GALLON G-LITE POTS. 1, 2, 4, AND 6 POT SYSTEMS AVAILABLE FOR STOCKING, CUSTOM SYSTEMS AVAILABLE BY REQUEST.



### EASY CLEANING

OPTIONAL IN-LINE FILTER

PARTS ARE EASY TO DISASSEMBLE AND CLEAN WITH SOAPY WATER. MOST PARTS ARE DISHWASHER SAFE IF SILICONE PARTS ARE REMOVED.

XL TUBING FLUSHES MORE EASILY

EVERY SYSTEM HAS A CLEAN-OUT VALVE AT THE END OF THE LINE